



City of Hamilton
GENERAL ISSUES COMMITTEE
AGENDA

Meeting #: 20-006
Date: February 13, 2020
Time: IMMEDIATELY FOLLOWING THE GIC
BUDGET MEETING
Location: Council Chambers, Hamilton City Hall
71 Main Street West

Stephanie Paparella, Legislative Coordinator (905) 546-2424 ext. 3993

1. **APPROVAL OF AGENDA**
(Added Items, if applicable, will be noted with *)
2. **DECLARATIONS OF INTEREST**
3. **COMMUNICATIONS**
4. **DELEGATION REQUESTS**
5. **PUBLIC HEARINGS / DELEGATIONS**
6. **STAFF PRESENTATIONS**
7. **DISCUSSION ITEMS**
 - 7.1. Chedoke Creek Spill Update (PW19008(f)) (City Wide)
PLEASE NOTE CHANGE TO REPORT TITLE
8. **MOTIONS**
9. **NOTICES OF MOTION**
10. **PRIVATE AND CONFIDENTIAL**

10.1. Appendix "B" to Report PW19008(g)/LS19004(f), respecting the Chedoke Creek Ministry Order Update

Discussion of Appendix "B" to Report PW19008(g)/LS19004(f) in Closed Session is subject to the following requirement(s) of the City of Hamilton's Procedural By-law and the *Ontario Municipal Act, 2001*:

- **Litigation or potential litigation, including matters before administrative tribunals, affecting the City;**
- **Advice that is subject to solicitor-client privilege, including communications necessary for that purpose; and,**
- **A position, plan, procedure, criteria or instruction to be applied to any negotiations carried on or to be carried on by or on behalf of the municipality or local board.**

11. ADJOURNMENT



INFORMATION REPORT

TO:	Mayor and Members General Issues Committee
COMMITTEE DATE:	February 13, 2020
SUBJECT/REPORT NO:	Chedoke Creek Spill Update (PW19008(f)) (City Wide)
WARD(S) AFFECTED:	City Wide
PREPARED BY:	Cari Vanderperk (905) 546-2424 Ext. 3250
SUBMITTED BY:	Andrew Grice Director, Hamilton Water Public Works Department
SIGNATURE:	

COUNCIL DIRECTION

On November 27, 2019 and December 11, 2019 Council amended Item 8 of the November 20, 2019 General Issues Committee (Report 19-024) which outlined items related to the contamination of Chedoke Creek as a result of the discharge from the Main/King Combined Sewer Overflow tank. The items related to publicly sharing various documents and data, working collaboratively and data sharing with various external parties and creating a program for sampling, monitoring and reporting. A status update on each of the items identified in the Motion is summarized in this report.

INFORMATION

This Report PW19008(f) contains information relating to the contamination of Chedoke Creek as a result of the discharge from the Main/King Combined Sewer Overflow (CSO) tank. A status update on the items identified in the Amending Motion to Item 8 of the November 20, 2019 General Issues Committee Report 19-024 is discussed below.

OUR Vision: To be the best place to raise a child and age successfully.

OUR Mission: To provide high quality cost conscious public services that contribute to a healthy, safe and prosperous community, in a sustainable manner.

OUR Culture: Collective Ownership, Steadfast Integrity, Courageous Change, Sensational Service, Engaged Empowered Employees.

**SUBJECT: Chedoke Creek Spill Update
(PW19008(f)) (City Wide) - Page 2 of 6**

Status of Motion Items:

Motion Item	Status
(a) That the direction provided to staff in Closed Session respecting the Potential Regulatory Litigation Update, be approved as amended to direct staff to take no action with respect to the leak of confidential reports related to Chedoke Creek;	Noted
(b) That the update and the direction provided in Closed Session, respecting the Potential Regulatory Litigation Update, remain confidential;	Noted
(c) That the Mayor and members of Council issue a formal apology to the residents of Hamilton for the failure to publicly disclose the volume and duration of the discharge of storm water runoff and sanitary sewage into Chedoke Creek when it first became known to the Council in 2018 and at any subsequent Committee and Council meetings;	Apology issued and published on the City's website at www.hamilton.ca/chedokecreek
(d) That staff be directed to publicly release all documents which responded to Provincial Orders;	All documents identified in the motion have been published on the City's website at www.hamilton.ca/chedokecreek
(e) That the above documents be forwarded to the City of Burlington, Halton Region; Royal Botanical Gardens; Bay Area Restoration Council; Halton Conservation Authority; Hamilton Conservation Authority and Environment Hamilton;	All documents identified in the motion have been forwarded to the parties.
(f) That staff be directed to compile and release publicly an inventory and summary of all water samples collected and retained by the City of Hamilton, from January 2014 to present;	Lab data has been compiled and summary tables will be released publicly via the City's website on February 14, 2020 and the summary tables are also attached as Appendix

**SUBJECT: Chedoke Creek Spill Update
(PW19008(f)) (City Wide) - Page 3 of 6**

Motion Item	Status
	<p>“A” and “B” to report PW19008(f). The map identifying sample locations is attached as Appendix “C” to report PW19008(f). Staff are currently building an interactive map layer that will identify sample locations and link users to live lab data and will be posted on the City’s website. Targeted completion date for this initiative is Q2 2020.</p>
<p>(g) That the City seek to reconcile with Indigenous Water Walkers to come into right relations on the concerns raised about waste materials in Hamilton Harbour and Cootes Paradise;</p>	<p>City staff have engaged with Indigenous Water Walkers and will continue to as projects move forward. As an example, City staff attended an indigenous town hall meeting and the Water Walkers were invited to a Public Works climate change adaptation workshop.</p>
<p>(h) That Public Health be directed to immediately identify, assess and report back on:</p> <ul style="list-style-type: none"> (i) any health-related incidents associated with exposure to contaminated waterways in the Chedoke Creek and Cootes Paradise; and, (ii) hospital and clinic data and public health notifications for any unusual illnesses reported since January 2014 that may be the result of bacterial contamination related to the discharge storm water runoff and sanitary sewage into Chedoke Creek and Cootes Paradise; 	<p>Public Health will report back to the Board of Health in the Summer of 2020.</p>
<p>(i) That staff be directed to report back on the governance, collection and reporting</p>	<p>Staff have reached out to stakeholders such as Hamilton Conservation Authority (HCA), Hamilton Harbour</p>

OUR Vision: To be the best place to raise a child and age successfully.

OUR Mission: To provide high quality cost conscious public services that contribute to a healthy, safe and prosperous community, in a sustainable manner.

OUR Culture: Collective Ownership, Steadfast Integrity, Courageous Change, Sensational Service, Engaged Empowered Employees.

**SUBJECT: Chedoke Creek Spill Update
(PW19008(f)) (City Wide) - Page 4 of 6**

Motion Item	Status
model regarding water sample collection;	Remedial Action Plan (HHRAP) office, Bay Area Restoration Council (BARC), Environment Hamilton and the Royal Botanical Gardens (RBG), in order to solicit feedback for an internal water quality program, and to ensure communication lines between the City and our community partners remain open. Staff intend to formalize this approach through a memorandum of understanding with applicable stakeholders in Q2 2020. Staff are working on developing and implementing an internal water quality program, that will improve our overall governance of urban watercourses that receive discharges from City infrastructure. Staff will report back to Council with a status update of this program in Q4 2020.
(j) That staff send a copy of this motion to ask the Hamilton Conservation Authority, and the Ministry of Environment, Conservation and Parks, to release an inventory and summary of all water samples collected and retained related to Chedoke Creek and Cootes Paradise from January 2014 to present;	A copy of the motion was sent to both the HCA and the Ministry of the Environment, Conservation and Parks (MECP).
(k) That Public Works and Communications staff prepare a document that detail the chronology of when the Mayor and members of Council were apprised of the situation at Chedoke Creek and Cootes Paradise and the method of reporting (Committee or Council; type of report (written or verbal) and media releases from July 2018 to present;	A chronology was prepared and published on the City's website at www.hamilton.ca/chedokecreek

OUR Vision: To be the best place to raise a child and age successfully.

OUR Mission: To provide high quality cost conscious public services that contribute to a healthy, safe and prosperous community, in a sustainable manner.

OUR Culture: Collective Ownership, Steadfast Integrity, Courageous Change, Sensational Service, Engaged Empowered Employees.

**SUBJECT: Chedoke Creek Spill Update
(PW19008(f)) (City Wide) - Page 5 of 6**

Motion Item	Status
<p>(l) That staff report back publicly on the environmental impacts of the discharge; and,</p>	<p>The ecological risk assessment, completed by a third-party consultant in response to the MECP Director's Order will be published on the City's website with the meeting materials for the Special General Issues Committee on February 13, 2020 and will be posted on the City's website at www.hamilton.ca/chedokecreek</p> <p>Additional reports will be provided to Council in Q2 2020 to satisfy the MECP's Director's Order.</p>
<p>(m) That the City recommit to the water quality objectives in the Remedial Action Plan process.</p>	<p>Staff have been and continue to be actively involved in the HHRAP process.</p> <p>Significant investments have been made in infrastructure to control combined sewage and improve effluent quality at the Woodward Wastewater Treatment Plant. A report highlighting these investments will be presented to the Public Works Committee in Q2 2020.</p> <p>Staff have held meetings with external stakeholders such as the HCA, BARC, Environment Hamilton and the RBG to discuss the future of the Remedial Action Plan and the incorporation of broader watershed management. A report outlining a potential governance structure and strategy will be presented to the Public Works Committee in Q4 2020.</p>

OUR Vision: To be the best place to raise a child and age successfully.

OUR Mission: To provide high quality cost conscious public services that contribute to a healthy, safe and prosperous community, in a sustainable manner.

OUR Culture: Collective Ownership, Steadfast Integrity, Courageous Change, Sensational Service, Engaged Empowered Employees.

**SUBJECT: Chedoke Creek Spill Update
(PW19008(f)) (City Wide) - Page 6 of 6**

APPENDICES AND SCHEDULES ATTACHED

Appendix "A" – Chedoke Creek Laboratory Data from RBG, HCA and City of Hamilton

Appendix "B" – City of Hamilton Data

Appendix "C" – Map of Sampling Locations in Chedoke Creek

OUR Vision: To be the best place to raise a child and age successfully.
OUR Mission: To provide high quality cost conscious public services that contribute to a healthy,
safe and prosperous community, in a sustainable manner.
OUR Culture: Collective Ownership, Steadfast Integrity, Courageous Change, Sensational Service,
Engaged Empowered Employees.

Sample Date	Sample Time	Sample Location	Record #	<i>E.coli</i> CFU/100 mL	Total Suspended Solids (mg/L)	Volatile Suspended Solids (mg/L)	Ammonia + Ammonium as N (mg/L)	Nitrate as N (mg/L)	Nitrite as N (mg/L)	o-Phosphate as P (mg/L)	Phosphorus Dissolved Total (mg/L)	Phosphorus Total (mg/L)	Caffeine (ug/L)
5/06/14	12:50:00	AC-1	459292	20	16.2	1.8	<0.01	0.47	<0.05	<0.2		0.032	
5/06/14	13:51:00	AC-2	459293	<10	18.6	1.7	<0.01	0.31	<0.05	<0.2		0.038	
5/06/14	15:34:00	CP-11	459289	53000	9.2	5.8	2.18	1.97	0.16	<0.2		0.306	
5/06/14	15:00:00	CP-18	459290	<10	1.8	<0.8	0.03	0.28	<0.05	<0.2		0.023	
5/06/14	15:15:00	CP-7	459291	30	6.1	1.5	0.01	0.34	<0.05	<0.2		0.027	
5/20/14	11:35:00	AC-1	460303	210	22.6	2.4	<0.01	0.52	<0.01	<0.05		0.035	
5/20/14	11:00:00	AC-2	460304	50	20.8	2.1	<0.01	0.36	<0.01	<0.05		0.030	
5/20/14	12:55:00	CP-11	460300	2600	9.5	4.3	0.54	1.85	0.07	<0.05		0.156	
5/20/14	12:20:00	CP-18	460301	30	3.4	1.6	<0.01	0.35	<0.01	<0.05		0.024	
5/20/14	12:35:00	CP-7	460302	100	12.3	2.8	0.01	0.42	<0.01	<0.05		0.056	
6/04/14	11:50:00	AC-1	461751	1390	23.8	2.7	0.02	0.56	<0.05	<0.2		0.041	
6/04/14	11:00:00	AC-2	461748	440	17.9	1.9	<0.01	0.32	<0.05	<0.2		0.028	
6/04/14	13:25:00	CP-11	461745	420000	19.0	12.1	2.45	0.08	0.20	<0.2		0.508	
6/04/14	12:40:00	CP-18	461746	390	4.2	2.2	<0.01	0.39	<0.05	<0.2		0.057	
6/04/14	13:05:00	CP-7	461747	900	17.5	2.9	0.03	0.44	<0.05	<0.2		0.038	
6/16/14	11:20:00	AC-1	462388	520	12.5	2.6	0.02	0.71	<0.05	<0.2		0.025	
6/16/14	10:52:00	AC-2	462389	130	12.3	1.9	0.02	0.49	<0.05	<0.2		0.038	
6/16/14	13:03:00	CP-11	462385	120000	21.5	16.5	3.04	0.32	0.16	<0.2		0.660	
6/16/14	11:40:00	CP-18	462386	100	5.4	2.2	0.02	0.80	<0.05	<0.2		0.053	
6/16/14	11:55:00	CP-7	462387	470	12.9	2.8	0.03	0.64	<0.05	<0.2		0.034	
7/02/14	12:12:00	AC-1	464020	570	21.8	3.2	0.02	0.71	<0.05	<0.2		0.045	
7/02/14	11:33:00	AC-2	464021	430	25.9	2.4	0.02	0.52	<0.05	<0.2		0.033	
7/02/14	14:00:00	CP-11	464017	1900	29.0	16.6	0.90	0.82	0.10	<0.2		0.306	
7/02/14	13:20:00	CP-18	464018	280	12.0	2.4	0.01	0.28	<0.05	<0.2		0.076	
7/02/14	13:35:00	CP-7	464019	420	23.1	3.3	0.03	0.56	<0.05	<0.2		0.047	
7/14/14	10:30:00	AC-1	464708	460	19.0	2.1	0.02	0.75	<0.01	<0.05		0.035	
7/14/14	10:00:00	AC-2	464709	440	22.3	2.0	0.01	0.57	<0.01	<0.05		0.031	
7/14/14	12:10:00	CP-11	464705	60000	25.9	15.4	0.19	0.65	0.04	<0.05		0.296	
7/14/14	10:50:00	CP-18	464706	120	8.1	2.0	<0.01	0.32	<0.01	<0.05		0.042	
7/14/14	11:00:00	CP-7	464707	420	22.5	3.7	0.02	0.53	<0.01	<0.05		0.040	
7/28/14	13:06:00	AC-1	466241	9700	335	61.5	0.04	0.47	<0.05	<0.2		0.650	
7/28/14	11:47:00	AC-2	466242	6000	645	39.2	0.03	0.37	<0.05	<0.2		0.689	
7/28/14	14:32:00	CP-11	466238	1120000	89.6	30.1	3.15	1.35	0.09	0.28		0.956	

Chedoke Creek Laboratory Data from RBG and HCA

Sample Date	Sample Time	Sample Location	Record #	<i>E.coli</i> CFU/100 mL	Total Suspended Solids (mg/L)	Volatile Suspended Solids (mg/L)	Ammonia + Ammonium as N (mg/L)	Nitrate as N (mg/L)	Nitrite as N (mg/L)	o-Phosphate as P (mg/L)	Phosphorus Dissolved Total (mg/L)	Phosphorus Total (mg/L)	Caffeine (ug/L)
7/28/14	13:24:00	CP-18	466239	8700	109	12.6	0.02	0.35	<0.05	<0.2		0.222	
7/28/14	13:40:00	CP-7	466240	8400	250	6.0	0.03	0.53	<0.05	<0.2		0.321	
8/11/14	11:30:00	AC-1	466936	700	2.5	1.0	0.01	0.57	<0.05	<0.2		0.015	
8/11/14	10:33:00	AC-2	466937	600	7.5	1.5	<0.01	0.49	<0.05	<0.2		0.027	
8/11/14	13:40:00	CP-11	466933	260000	52.4	40.0	0.41	1.06	0.18	<0.2		0.642	
8/11/14	12:55:00	CP-18	466934	500	8.1	2.8	0.01	0.12	<0.05	<0.2		0.045	
8/11/14	13:14:00	CP-7	466935	300	13.4	3.5	0.02	0.20	<0.05	<0.2		0.045	
8/25/14	12:10:00	AC-1	467984	360	1.6	<0.8	0.01	0.61	0.09	<0.2		0.017	
8/25/14	10:50:00	AC-2	467985	240	5.4	0.8	<0.01	0.52	<0.05	<0.2		0.015	
8/25/14	13:40:00	CP-11	467981	2900	55.5	34.8	0.23	1.25	0.10	<0.2		0.502	
8/25/14	12:45:00	CP-18	467982	190	3.8	1.0	0.01	0.27	<0.05	<0.2		0.038	
8/25/14	13:15:00	CP-7	467983	270	9.6	1.8	0.02	0.35	<0.05	<0.2		0.041	
9/08/14	12:40:00	AC-1	469097	490	4.4	1.2	0.01	0.64	<0.05	<0.2		0.027	
9/08/14	11:50:00	AC-2	469098	300	7.8	1.4	<0.01	0.45	<0.05	<0.2		0.074	
9/08/14	14:00:00	CP-11	469094	120000	7.0	4.0	2.54	1.00	0.07	<0.2		0.397	
9/08/14	13:20:00	CP-18	469095	210	4.2	1.2	<0.01	0.30	<0.05	<0.2		0.036	
9/08/14	13:40:00	CP-7	469096	270	20.4	3.8	0.02	0.32	<0.05	<0.2		0.066	
9/23/14	12:30:00	AC-1	470285	980	2.7	1.1	<0.01	0.61	<0.05	<0.2		0.017	
9/23/14	11:45:00	AC-2	470286	150	3.6	<0.8	<0.01	0.50	<0.05	<0.2		0.014	
9/23/14	14:20:00	CP-11	470282	550000	12.4	6.4	2.53	0.89	<0.05	<0.2		0.496	
9/23/14	13:00:00	CP-18	470283	120	4.0	1.3	<0.01	0.18	<0.05	<0.2		0.044	
9/23/14	13:30:00	CP-7	470284	250	9.0	2.0	0.01	0.30	<0.05	<0.2		0.034	
4/09/15	11:40:00	AC-1	484690	240	207	12.1	0.04	0.83	<0.01	<0.05		0.226	
4/09/15	10:50:00	AC-2	484691	80	315	17.7	0.04	0.78	<0.01	<0.05		0.325	
4/09/15	13:15:00	CP-11	484687	900000	48.5	25.3	6.11	2.93	0.11	0.92		1.25	
4/09/15	12:30:00	CP-18	484688	150	28.1	3.9	0.03	1.75	<0.01	<0.05		0.108	
4/09/15	12:50:00	CP-7	484689	210	55.2	6.2	0.03	0.97	<0.01	<0.05		0.114	
4/20/15	11:15:00	AC-1	485398	1000	1050	61.2	0.06	0.61	<0.05	<0.2		1.10	
4/20/15	10:30:00	AC-2	485399	410	927	52.3	0.04	0.40	<0.05	<0.2		0.950	
4/20/15	13:00:00	CP-11	485395	900000	58.0	34.4	4.53	1.35	0.07	0.46		1.06	
4/20/15	12:05:00	CP-18	485396	1800	132	18.0	0.04	0.78	<0.05	<0.2		0.287	
4/20/15	12:25:00	CP-7	485397	970	296	22.2	0.04	0.50	<0.05	<0.2		0.410	
5/04/15	12:15:00	AC-1	486588	20	<3	<3	<0.01	0.32	<0.05	<0.2		0.015	

Sample Date	Sample Time	Sample Location	Record #	<i>E.coli</i> CFU/100 mL	Total Suspended Solids (mg/L)	Volatile Suspended Solids (mg/L)	Ammonia + Ammonium as N (mg/L)	Nitrate as N (mg/L)	Nitrite as N (mg/L)	o-Phosphate as P (mg/L)	Phosphorus Dissolved Total (mg/L)	Phosphorus Total (mg/L)	Caffeine (ug/L)
5/04/15	11:15:00	AC-2	486589	90	<3	<3	<0.01	0.20	<0.05	<0.2		0.012	
5/04/15	14:45:00	CP-11	486585	5900	<3	<3	0.55	1.89	0.07	<0.2		0.113	
5/04/15	12:50:00	CP-18	486586	60	<3	<3	<0.01	0.06	<0.05	<0.2		0.014	
5/04/15	14:15:00	CP-7	486587	20	3.6	2.8	0.02	0.36	<0.05	<0.2		0.017	
5/19/15	12:50:00	AC-1	487783	180	3.6	<0.8	0.01	0.34	<0.05	<0.2		0.017	
5/19/15	11:20:00	AC-2	487784	40	4.8	2.2	<0.01	0.23	<0.05	<0.2		<0.010	
5/19/15	14:40:00	CP-11	487780	420	10.4	6.2	0.75	1.43	0.05	<0.2		0.207	
5/19/15	13:15:00	CP-18	487781	<10	5.4	3.0	0.02	0.11	<0.05	<0.2		0.021	
5/19/15	13:30:00	CP-7	487782	210	10.2	2.6	0.03	0.52	<0.05	<0.2		0.024	
6/01/15	11:25:00	AC-1	488885	3700	29.0	3.1	0.04	0.53	<0.05	<0.2		0.053	
6/01/15	10:30:00	AC-2	488886	1380	50.0	4.5	0.03	0.33	<0.05	<0.2		0.059	
6/01/15	13:45:00	CP-11	488882	620000	22.7	17.3	4.10	1.80	0.11	0.3		0.508	
6/01/15	13:00:00	CP-18	488883	1900	11.5	2.5	0.01	0.56	<0.05	<0.2		0.057	
6/01/15	13:25:00	CP-7	488884	10100	6.7	2.0	0.06	0.81	<0.05	<0.2		0.039	
6/15/15	12:00:00	AC-1	489964	1800	57.0	7.3	0.05	0.55	<0.05	<0.2		0.097	
6/15/15	11:05:00	AC-2	489965	680	58.6	6.2	0.04	0.46	<0.05	<0.2		0.076	
6/15/15	13:45:00	CP-11	489961	650000	28.7	10.6	2.86	0.11	0.19	<0.2		0.501	
6/15/15	13:00:00	CP-18	489962	400	24.2	5.0	0.02	2.03	<0.05	<0.2		0.080	
6/15/15	13:10:00	CP-7	489963	710	43.7	8.2	0.05	0.99	<0.05	<0.2		0.088	
6/22/15	19:00:00	AC-1	490508	810	31.3	4.2	0.03	0.62	<0.05	<0.2		0.060	
6/30/15	12:30:00	AC-1	491482	760	31.7	3.4	0.03	0.64	<0.05	<0.2		0.061	
6/30/15	11:15:00	AC-2	491483	460	55.3	4.3	0.02	0.52	<0.05	<0.2		0.066	
6/30/15	14:45:00	CP-11	491479	490000	5.0	5.0	2.87	1.54	0.43	<0.2		0.465	
6/30/15	14:05:00	CP-18	491480	430	7.9	1.7	0.01	2.71	<0.05	<0.2		0.070	
6/30/15	14:25:00	CP-7	491481	450	29.8	5.1	0.04	1.60	<0.05	<0.2		0.094	
7/13/15	12:10:00	AC-1	492118	520	4.4	1.2	0.02	0.48	0.07	<0.2		0.015	
7/13/15	11:00:00	AC-2	492119	490	13.6	2.8	0.01	0.39	0.07	<0.2		0.018	
7/13/15	13:45:00	CP-11	492115	220	34.0	21.2	0.02	0.28	0.11	<0.2		0.324	
7/13/15	13:05:00	CP-18	492116	130	4.0	1.6	0.01	0.35	0.06	<0.2		0.039	
7/13/15	13:30:00	CP-7	492117	370	6.0	2.4	0.03	0.55	<0.05	<0.2		0.029	
7/27/15	12:30:00	AC-1	493584	360	3.4	1.0	0.02	0.46	<0.05	<0.2		0.019	
7/27/15	10:50:00	AC-2	493585	280	12.4	1.8	0.01	0.40	<0.05	<0.2		0.024	
7/27/15	13:30:00	CP-11	493581	110000	27.6	20.4	1.05	0.17	0.16	<0.2		0.475	

Sample Date	Sample Time	Sample Location	Record #	<i>E.coli</i> CFU/100 mL	Total Suspended Solids (mg/L)	Volatile Suspended Solids (mg/L)	Ammonia + Ammonium as N (mg/L)	Nitrate as N (mg/L)	Nitrite as N (mg/L)	o-Phosphate as P (mg/L)	Phosphorus Dissolved Total (mg/L)	Phosphorus Total (mg/L)	Caffeine (ug/L)
7/27/15	12:45:00	CP-18	493582	190	6.4	1.6	0.02	0.16	<0.05	<0.2		0.057	
7/27/15	13:10:00	CP-7	493583	290	6.9	2.0	0.03	0.48	<0.05	<0.2		0.043	
8/10/15	11:15:00	AC-1	494225	450	3.8	1.8	0.01	0.50	<0.05	<0.2		<0.010	
8/10/15	10:30:00	AC-2	494226	230	38.4	4.4	<0.01	0.42	<0.05	<0.2		0.025	
8/10/15	13:00:00	CP-11	494222	280	24.8	20.0	0.27	0.55	0.10	<0.2		0.369	
8/10/15	12:30:00	CP-18	494223	100	2.4	1.6	<0.01	0.14	<0.05	<0.2		0.025	
8/10/15	12:40:00	CP-7	494224	300	8.6	2.8	0.02	0.43	<0.05	<0.2		0.021	
8/21/15	4:00:00	AC-1	495272	11200	176	15.2	0.03	0.54	<0.05	<0.2		0.260	
8/24/15	12:45:00	AC-1	495296	480	3.2	2.4	0.02	0.47	0.07	<0.2		0.027	
8/24/15	11:30:00	AC-2	495297	760	17.2	5.2	<0.01	0.42	0.07	<0.2		0.020	
8/24/15	14:15:00	CP-11	495293	4700	38.8	18.9	0.38	0.97	0.20	<0.2		0.300	
8/24/15	13:10:00	CP-18	495294	80	<3	<3	0.02	0.18	0.07	<0.2		0.033	
8/24/15	13:20:00	CP-7	495295	9500	22.4	4.8	0.04	0.43	0.08	<0.2		0.056	
9/03/15		AC-1	496302	31000	903	84.1	0.16	0.73	<0.05	<0.2		1.05	
9/08/15	14:00:00	AC-1	496361	2400	25.0	2.8	0.02	0.53	<0.05	<0.2		0.068	
9/08/15	12:00:00	AC-2	496362	710	6.2	1.2	<0.01	0.36	<0.05	<0.2		0.024	
9/08/15	15:20:00	CP-11	496358	889000	28.8	14.4	4.72	0.87	0.12	<0.2		0.826	
9/08/15	14:30:00	CP-18	496359	170	4.8	1.2	0.01	0.07	<0.05	<0.2		0.054	
9/08/15	14:50:00	CP-7	496360	8700	18.4	3.2	0.04	0.49	<0.05	<0.2		0.064	
9/22/15	13:20:00	AC-1	497540	230	<2	<2	<0.01	0.46	<0.05	<0.2		0.011	
9/22/15	12:00:00	AC-2	497541	210	1.6	1.2	<0.01	0.34	<0.05	<0.2		0.010	
9/22/15	15:00:00	CP-11	497537	1790	14.4	10.4	1.56	0.84	0.16	<0.2		0.306	
9/22/15	13:45:00	CP-18	497538	100	2.2	1.0	<0.01	0.06	<0.05	<0.2		0.031	
9/22/15	14:20:00	CP-7	497539	440	1.8	<0.8	0.03	0.42	<0.05	<0.2		0.023	
10/15/15	11:25:00	AC-1	499444	570	<2	<2	<0.01	0.22	<0.05	<0.2		0.012	
10/15/15	10:25:00	AC-2	499445	40	<2	<2	<0.01	0.14	<0.05	<0.2		0.010	
10/15/15	13:20:00	CP-11	499441	640	5.8	3.8	0.84	1.83	0.06	<0.2		0.340	
10/15/15	11:50:00	CP-18	499442	10	2.4	1.6	<0.01	<0.05	<0.05	<0.2		0.029	
10/15/15	12:30:00	CP-7	499443	240	5.4	2.2	0.03	0.22	<0.05	<0.2		0.025	
10/22/15	11:50:00	AC-1	500073	370	1.6	1.4	<0.01	0.15	<0.05	<0.2		0.020	
10/22/15	10:55:00	AC-2	500074	70	<2	<2	<0.01	0.06	<0.05	<0.2		<0.010	
10/22/15	13:00:00	CP-11	500070	4800	10.9	7.0	0.92	1.90	0.06	<0.2		0.379	
10/22/15	12:10:00	CP-18	500071	20	1.8	1.4	<0.01	<0.05	<0.05	<0.2		0.040	

Chedoke Creek Laboratory Data from RBG and HCA

Sample Date	Sample Time	Sample Location	Record #	<i>E.coli</i> CFU/100 mL	Total Suspended Solids (mg/L)	Volatile Suspended Solids (mg/L)	Ammonia + Ammonium as N (mg/L)	Nitrate as N (mg/L)	Nitrite as N (mg/L)	o-Phosphate as P (mg/L)	Phosphorus Dissolved Total (mg/L)	Phosphorus Total (mg/L)	Caffeine (ug/L)
10/22/15	12:15:00	CP-7	500072	210	9.4	2.0	0.02	0.33	<0.05	<0.2		0.036	
11/03/15	14:15:00	AC-1	501169	110	<2	<2	<0.01	0.32	<0.05	<0.2		0.031	
11/03/15	10:40:00	AC-2	501170	40	3.4	0.8	0.01	0.22	<0.05	<0.2		0.029	<0.5
11/03/15	15:00:00	CP-11	501166	4800	15.2	2.6	0.51	2.12	<0.05	<0.2		0.299	
11/03/15	13:40:00	CP-18	501167	40	<2	<2	<0.01	0.22	<0.05	<0.2		0.029	
11/03/15	13:25:00	CP-7	501168	40	5.0	1.0	0.01	0.36	<0.05	<0.2		0.029	
11/18/15	13:15:00	AC-1	502178	180	<2	<2	<0.01	0.28	<0.05	<0.2		0.012	<0.5
11/18/15	11:45:00	AC-2	502179	50	<2	<2	<0.01	0.23	<0.05	<0.2		0.031	<0.5
11/18/15	15:15:00	CP-11	502175	750	2.2	1.6	0.61	2.59	<0.05	<0.2		0.229	
11/18/15	14:00:00	CP-18	502176	10	<2	<2	<0.01	<0.05	<0.05	<0.2		0.027	
11/18/15	14:30:00	CP-7	502177	20	4.4	1.0	<0.01	0.35	<0.05	<0.2		0.020	
4/12/16	12:30:00	AC-1	513437	100	40.2	3.2	<0.01	0.58	<0.05	<0.2		0.063	
4/12/16	11:25:00	AC-2	513438	40	59.8	4.2	<0.01	0.57	<0.05	<0.2		0.059	
4/12/16	14:00:00	CP-11	513434	80000	10.4	6.2	2.33	2.68	<0.05	<0.2		0.386	
4/12/16	13:15:00	CP-18	513435	70	7.0	1.6	0.03	0.82	<0.05	<0.2		0.047	
4/12/16	13:40:00	CP-7	513436	10	10.6	1.8	0.02	0.91	<0.05	<0.2		0.024	
4/20/16	11:30:00	CP-7	513715	70	<3	<3	0.01	0.59	<0.05	<0.2	<0.010	0.022	
4/27/16	11:35:00	CP-7	513943	890	3.6	2.8	0.02	0.56	<0.05	<0.2	<0.010	0.020	
4/28/16	12:55:00	AC-1	514020	60	<2	<2	0.01	0.41	<0.05	<0.2		0.015	
4/28/16	11:20:00	AC-2	514021	80	2.8	0.8	0.01	0.31	<0.05	<0.2		0.014	
4/28/16	14:00:00	CP-11	514017	162000	9.4	6.6	4.45	1.37	<0.05	0.2		0.518	
4/28/16	13:20:00	CP-18	514018	40	<2	<2	0.02	0.25	<0.05	<0.2		0.016	
4/28/16	13:40:00	CP-7	514019	20	2.8	1.6	0.02	0.50	<0.05	<0.2		0.023	
5/04/16	9:50:00	CP-11.2	514128	200	31.2	9.8	0.23	0.39	<0.05	<0.2	0.020	0.176	
5/11/16	11:00:00	AC-1	514361	110	2.8	1.8	0.01	0.36	<0.05	<0.2		0.012	
5/11/16	10:15:00	AC-2	514362	20	4.6	1.6	<0.01	0.25	<0.05	<0.2		0.014	
5/11/16	13:00:00	CP-11	514358	150	47.2	35.2	0.02	1.46	0.05	<0.2		0.620	
5/11/16	12:20:00	CP-18	514359	20	<2	<2	<0.01	<0.05	<0.05	<0.2		0.012	
5/11/16	12:40:00	CP-7	514360	390	2.2	1.6	0.02	0.51	<0.05	<0.2		0.012	
5/18/16	7:52:00	CP-11.2	514610	120	37.0	10.2	0.35	0.50	<0.05	<0.2	0.021	0.140	
5/25/16	11:10:00	AC-1	515096	110	4.4	1.1	0.02	0.41	<0.05	<0.2		0.018	
5/25/16	9:45:00	AC-2	515097	60	5.2	1.4	0.01	0.28	<0.05	<0.2		0.015	
5/25/16	13:55:00	CP-11	515093	10	70.0	45.0	0.02	0.59	<0.05	<0.2		0.762	

Chedoke Creek Laboratory Data from RBG and HCA

Sample Date	Sample Time	Sample Location	Record #	<i>E.coli</i> CFU/100 mL	Total Suspended Solids (mg/L)	Volatile Suspended Solids (mg/L)	Ammonia + Ammonium as N (mg/L)	Nitrate as N (mg/L)	Nitrite as N (mg/L)	o-Phosphate as P (mg/L)	Phosphorus Dissolved Total (mg/L)	Phosphorus Total (mg/L)	Caffeine (ug/L)
6/16/16	11:00:00	AC-2	517037	3300	48.0	5.7	0.05	0.49	<0.05	<0.2		0.076	
6/16/16	12:45:00	CP-11	517033	1350000	29.8	22.2	4.06	0.80	0.28	<0.2		0.716	
6/16/16	13:30:00	CP-18	517034	170	11.8	3.2	0.02	0.14	<0.05	<0.2		0.057	
6/16/16	13:45:00	CP-7	517035	1800	8.9	2.2	0.07	0.57	<0.05	<0.2		0.039	
6/22/16	12:30:00	AC-1	517183	600	10.8	2.0	0.07	0.56	<0.05	<0.2		0.034	
6/22/16	11:20:00	AC-2	517184	370	14.2	2.0	0.04	0.51	<0.05	<0.2		0.029	
6/22/16	15:15:00	CP-11	517180	12300	18.8	12.0	1.98	0.28	0.08	<0.2		0.521	
6/22/16	14:30:00	CP-18	517181	320	6.2	1.6	0.01	0.08	<0.05	<0.2		0.078	
6/22/16	14:50:00	CP-7	517182	280	9.0	1.8	0.05	0.53	<0.05	<0.2		0.030	
6/29/16	8:18:00	CP-11.2	518133	190	51.7	18.0	0.43	0.10	<0.05	<0.2	0.079	0.492	
7/06/16	11:30:00	AC-1	518269	560	11.8	2.4	0.04	0.42	<0.05	<0.2		0.039	
7/06/16	10:30:00	AC-2	518270	220	8.8	2.0	0.02	0.42	<0.05	<0.2		0.023	
7/06/16	13:05:00	CP-11	518266	150	57.5	45.5	0.16	0.59	<0.05	<0.2		0.632	
7/06/16	13:30:00	CP-18	518267	480	16.8	4.6	0.01	<0.05	<0.05	<0.2		0.050	
7/06/16	13:45:00	CP-7	518268	440	10.0	2.8	0.06	0.48	<0.05	<0.2		0.037	
7/13/16	8:27:00	CP-11.2	518804	30	44.0	17.4	0.06	0.05	<0.05	<0.2	0.101	0.442	
7/19/16	11:00:00	AC-1	519275	820	8.4	1.2	0.03	0.40	<0.05	<0.2		0.038	
7/19/16	10:10:00	AC-2	519276	210	5.6	1.6	0.02	0.44	<0.05	<0.2		0.012	
7/19/16	12:00:00	CP-11	519272	510	33.2	25.6	0.43	0.79	0.17	<0.2		0.421	
7/19/16	12:30:00	CP-18	519273	170	7.2	1.6	0.01	0.10	<0.05	<0.2		0.045	
7/19/16	12:45:00	CP-7	519274	430	11.4	1.4	0.04	0.45	0.10	<0.2		0.044	
7/27/16	9:10:00	CP-11.2	520236	2500	55.8	17.8	0.49	0.10	0.05	<0.2	0.073	0.428	
8/04/16	11:05:00	AC-1	520774	1300	4.0	1.2	0.03	0.40	<0.05	<0.2		0.037	
8/04/16	10:10:00	AC-2	520775	790	4.2	1.2	0.01	0.40	<0.05	<0.2		0.016	
8/04/16	12:50:00	CP-11	520771	130	104	89.6	0.04	0.67	<0.05	<0.2		1.04	
8/04/16	12:10:00	CP-18	520772	550	59.8	28.4	<0.01	<0.05	<0.05	<0.2		0.258	
8/04/16	12:30:00	CP-7	520773	740	11.3	2.6	0.06	0.46	<0.05	<0.2		0.044	
8/10/16	8:40:00	CP-11.2	521012	100	63.3	24.4	0.01	<0.05	<0.05	<0.2	0.028	0.472	
8/17/16	12:45:00	AC-1	521603	790	9.6	1.6	0.02	0.44	<0.05	<0.2		0.024	
8/17/16	11:35:00	AC-2	521604	710	9.8	1.6	0.02	0.36	<0.05	<0.2		0.010	
8/17/16	14:45:00	CP-11	521600	34000	3.8	2.6	3.20	0.90	<0.05	<0.2		0.433	
8/17/16	14:15:00	CP-18	521601	110	3.6	1.2	0.02	0.22	<0.05	<0.2		0.031	
8/17/16	14:25:00	CP-7	521602	1200	20.0	2.8	0.04	0.50	<0.05	<0.2		0.042	

Sample Date	Sample Time	Sample Location	Record #	<i>E.coli</i> CFU/100 mL	Total Suspended Solids (mg/L)	Volatile Suspended Solids (mg/L)	Ammonia + Ammonium as N (mg/L)	Nitrate as N (mg/L)	Nitrite as N (mg/L)	o-Phosphate as P (mg/L)	Phosphorus Dissolved Total (mg/L)	Phosphorus Total (mg/L)	Caffeine (ug/L)
8/24/16	9:43:00	CP-11.2	522604	120	51.1	27.8	0.02	0.14	<0.05	<0.2	<0.010	0.404	
8/25/16	16:00:00	AC-1	522654	12900	506	51.3	0.06	0.53	<0.05	<0.2		0.573	
8/31/16	10:55:00	AC-1	523137	420	3.0	0.8	0.02	0.48	<0.05	<0.2		0.049	
8/31/16	10:05:00	AC-2	523138	440	7.0	1.2	0.01	0.43	<0.05	<0.2		0.033	
8/31/16	12:15:00	CP-11	523134	2200	19.6	10.6	0.75	1.67	<0.05	<0.2		0.360	
8/31/16	11:15:00	CP-18	523135	120	<2	<2	<0.01	0.10	<0.05	<0.2		0.030	
8/31/16	11:30:00	CP-7	523136	260	12.4	2.2	0.04	0.72	<0.05	<0.2		0.044	
9/07/16	8:27:00	CP-11.2	523344	100	44.2	19.3	0.08	0.08	<0.05	<0.2	<0.010	0.324	
9/14/16	12:35:00	AC-1	523981	390	<2	<2	0.02	0.41	0.07	<0.2		0.025	
9/14/16	11:45:00	AC-2	523985	190	2.2	1.0	<0.01	0.38	<0.05	<0.2		0.029	
9/14/16	15:20:00	CP-11	523982	3400	38.0	38.0	0.83	1.41	0.20	<0.2		0.828	
9/14/16	14:10:00	CP-18	523983	30	<2	<2	0.01	<0.05	<0.05	<0.2		0.027	
9/14/16	14:35:00	CP-7	523984	500	15.2	2.8	0.04	0.67	<0.05	<0.2		0.046	
9/21/16	9:10:00	CP-11.2	524777	3800	23.1	9.2	1.97	0.57	0.10	<0.2	0.071	0.336	
9/28/16	12:15:00	AC-1	525593	890	<2	<2	0.02	0.52	0.10	<0.2		0.018	
9/28/16	11:05:00	AC-2	525594	680	4.6	1.0	<0.01	0.44	0.09	<0.2		<0.010	
9/28/16	14:00:00	CP-11	525590	39000	3.4	2.8	2.14	1.66	0.06	<0.2		0.375	
9/28/16	12:40:00	CP-18	525591	210	<2	<2	<0.01	0.16	<0.05	<0.2		0.030	
9/28/16	13:00:00	CP-7	525592	1270	4.2	1.0	0.04	0.63	<0.05	<0.2		0.024	
10/12/16	11:35:00	AC-1	526261	230	<2	<2	0.01	0.45	<0.05	<0.2		0.014	
10/12/16	10:50:00	AC-2	526262	60	<2	<2	<0.01	0.36	<0.05	<0.2		<0.010	
10/12/16	13:25:00	CP-11	526258	600	4.4	1.6	0.81	2.49	0.19	<0.2		0.232	
10/12/16	12:40:00	CP-18	526259	<10	14.0	3.4	0.01	<0.05	<0.05	<0.2		0.043	
10/12/16	13:05:00	CP-7	526260	210	16.0	2.8	0.03	0.71	<0.05	<0.2		0.038	
10/26/16	10:55:00	AC-1	527784	140	<2	<2	<0.01	0.27	<0.05	<0.2		<0.010	
10/26/16	10:15:00	AC-2	527785	240	<2	<2	<0.01	0.18	<0.05	<0.2		<0.010	
10/26/16	13:20:00	CP-11	527781	3500	3.8	1.8	0.50	2.37	<0.05	<0.2		0.232	
10/26/16	12:45:00	CP-18	527782	70	1.8	1.0	<0.01	<0.05	<0.05	<0.2		0.017	
10/26/16	13:00:00	CP-7	527783	580	1.8	1.4	0.02	0.50	<0.05	<0.2		0.012	
11/09/16	12:15:00	AC-1	529542	140	<2	<2	<0.01	0.26	<0.05	<0.2		0.017	
11/09/16	11:30:00	AC-2	529543	70	<2	<2	<0.01	0.18	<0.05	<0.2		0.012	
11/09/16	13:15:00	CP-11	529539	640000	11.1	4.7	2.48	2.01	0.10	<0.2		0.506	
11/09/16	12:40:00	CP-18	529540	10	<2	<2	<0.01	<0.05	<0.05	<0.2		0.020	

Sample Date	Sample Time	Sample Location	Record #	<i>E.coli</i> CFU/100 mL	Total Suspended Solids (mg/L)	Volatile Suspended Solids (mg/L)	Ammonia + Ammonium as N (mg/L)	Nitrate as N (mg/L)	Nitrite as N (mg/L)	o-Phosphate as P (mg/L)	Phosphorus Dissolved Total (mg/L)	Phosphorus Total (mg/L)	Caffeine (ug/L)
11/09/16	12:50:00	CP-7	529541	380	2.0	0.9	0.02	0.39	<0.05	<0.2		0.025	
11/24/16	13:40:00	AC-1	530315	240	<2	<2	0.01	0.46	<0.05	<0.2		0.016	
11/24/16	12:20:00	AC-2	530316	390	<2	<2	<0.01	0.42	<0.05	<0.2		0.011	
11/24/16	14:40:00	CP-11	530312	132000	17.8	4.8	1.21	1.61	<0.05	<0.2		0.393	
11/24/16	14:20:00	CP-18	530313	20	<2	<2	<0.01	<0.05	<0.05	<0.2		0.012	
11/24/16	14:00:00	CP-7	530314	330	3.5	2.5	0.02	0.40	<0.05	<0.2		0.025	
12/07/16	11:30:00	AC-1	531321	90	<2	<2	<0.01	0.43	<0.05	<0.2		0.011	
12/07/16	10:10:00	AC-2	531322	30	3.0	1.4	<0.01	0.44	<0.05	<0.2		<0.010	
12/07/16	13:20:00	CP-11	531318	21600	8.9	3.3	0.23	1.82	<0.05	<0.2		0.226	
12/07/16	12:40:00	CP-18	531319	60	2.2	1.6	<0.01	0.25	<0.05	<0.2		0.017	
12/07/16	11:50:00	CP-7	531320	50	2.8	1.1	0.02	0.45	<0.05	<0.2		0.019	
12/21/16	12:00:00	AC-1	532295	170	<2	<2	0.02	0.69	<0.05	<0.2		<0.010	
12/21/16	10:50:00	AC-2	532296	10	<2	<2	0.01	0.63	<0.05	<0.2		0.011	
12/21/16	13:55:00	CP-11	532292	1100	4.8	0.8	0.15	2.83	<0.05	<0.2		0.237	
12/21/16	12:52:00	CP-18	532293	<10	<2	<2	<0.01	0.31	<0.05	<0.2		<0.010	
12/21/16	13:20:00	CP-7	532294	1100	<2	<2	0.05	0.89	<0.05	<0.2		0.013	
1/04/17	12:30:00	AC-1	532441	220	19.3	2.3	0.03	0.99	<0.05	<0.2		0.051	
1/04/17	12:55:00	AC-2	532442	120	35.7	3.4	0.02	0.87	<0.05	<0.2		0.058	
1/04/17	13:45:00	CP-11	532438	5100	15.5	5.9	0.17	3.36	<0.05	<0.2		0.189	
1/04/17	11:00:00	CP-18	532439	1900	9.5	2.5	0.02	3.67	<0.05	<0.2		0.120	
1/04/17	11:15:00	CP-7	532440	510	13.8	4.2	0.03	1.88	<0.05	<0.2		0.066	
1/18/17	12:00:00	AC-1	533772	260	34.5	5.0	0.04	0.75	<0.05	<0.2		0.078	
1/18/17	11:15:00	AC-2	533773	170	76.4	6.4	0.04	0.76	<0.05	<0.2		0.099	
1/18/17	14:10:00	CP-11	533769	13000	11.6	3.6	0.47	2.84	<0.05	<0.2		0.171	
1/18/17	13:00:00	CP-18	533770	770	20.0	3.6	0.03	1.30	<0.05	<0.2		0.183	
1/18/17	13:15:00	CP-7	533771	230	35.6	7.2	0.06	1.12	<0.05	<0.2		0.241	
2/01/17	11:15:00	AC-1	535029	60	5.5	2.5	0.02	0.78	<0.05	<0.2		0.018	
2/01/17	10:30:00	AC-2	535030	<10	21.5	3.5	0.02	0.71	<0.05	<0.2		0.027	
2/01/17	13:10:00	CP-11	535026	600	<4	<4	0.12	2.22	<0.05	<0.2		0.158	
2/01/17	11:45:00	CP-18	535027	<10	<4	<4	<0.01	1.77	<0.05	<0.2		0.023	
2/01/17	11:30:00	CP-7	535028	40	<4	<4	0.02	1.26	<0.05	<0.2		0.025	
2/15/17	11:20:00	AC-1	535601	90	8.1	2.4	0.02	0.75	<0.05	<0.2		0.021	
2/15/17	10:35:00	AC-2	535602	40	19.0	3.4	0.01	0.67	<0.05	<0.2		0.027	

Chedoke Creek Laboratory Data from RBG and HCA

Sample Date	Sample Time	Sample Location	Record #	<i>E.coli</i> CFU/100 mL	Total Suspended Solids (mg/L)	Volatile Suspended Solids (mg/L)	Ammonia + Ammonium as N (mg/L)	Nitrate as N (mg/L)	Nitrite as N (mg/L)	o-Phosphate as P (mg/L)	Phosphorus Dissolved Total (mg/L)	Phosphorus Total (mg/L)	Caffeine (ug/L)
3/01/17	13:40:00	CP-11	536555	480000	52.0	19.0	2.82	3.28	<0.05	<0.2		0.713	
3/01/17	12:50:00	CP-18	536556	410	359	37.0	0.04	1.45	<0.05	<0.2		0.755	
3/01/17	13:10:00	CP-7	536557	510	214	21.0	0.03	1.27	<0.05	<0.2		0.303	
3/15/17	12:10:00	AC-1	538918	20	7.4	1.3	0.02	0.79	<0.05	<0.05		0.017	
3/15/17	11:20:00	AC-2	538919	<10	35.6	2.5	0.01	0.65	<0.05	<0.05		0.048	
3/15/17	13:30:00	CP-11	538915	80	<3	<3	0.07	2.47	<0.05	0.10		0.109	
3/15/17	12:30:00	CP-18	538916	<10	<3	<3	<0.01	1.16	<0.05	<0.05		0.017	
3/15/17	12:45:00	CP-7	538917	40	3.6	1.3	0.02	1.15	<0.05	<0.05		0.022	
3/29/17	11:40:00	AC-1	541137	10	10.7	2.0	0.02	0.58	<0.05	<0.05		0.021	
3/29/17	10:35:00	AC-2	541138	10	14.5	1.9	<0.01	0.41	<0.05	<0.05		0.024	
3/29/17	13:00:00	CP-11	541134	1500	4.2	2.7	0.37	3.06	<0.05	0.12		0.162	
3/29/17	12:05:00	CP-18	541135	<10	3.3	1.6	<0.01	0.80	<0.05	<0.05		0.025	
3/29/17	11:55:00	CP-7	541136	20	5.3	2.3	0.02	1.13	<0.05	<0.05		0.028	
4/12/17	12:40:00	AC-1	542244	40	8.2	1.4	<0.01	0.52	<0.05			0.023	
4/12/17	11:30:00	AC-2	542245	10	14.9	2.3	0.01	0.37	<0.05			0.026	
4/12/17	14:10:00	CP-11	542241	660000	13.5	10.7	8.02	<0.05	0.90			1.05	
4/12/17	13:30:00	CP-18	542242	10	<4	<4	0.16	0.79	<0.05			0.035	
4/12/17	13:00:00	CP-7	542243	50	11.2	2.8	<0.01	0.57	<0.05			0.042	
4/27/17	12:25:00	AC-1	542663	20	5.7	1.3	<0.01	0.44	<0.05			0.015	
4/27/17	11:15:00	AC-2	542664	20	14.7	1.6	<0.01	0.30	<0.05			0.021	
4/27/17	13:25:00	CP-11	542660	420	9.1	4.1	0.52	1.48	<0.05			0.130	
4/27/17	13:00:00	CP-18	542661	40	<4	<4	0.01	0.38	<0.05			0.023	
4/27/17	12:45:00	CP-7	542662	70	5.0	2.3	0.02	0.58	<0.05			0.029	
5/05/17	15:50:00	AC-1	542913	1080	2510	118	0.04	0.50	<0.1			2.49	
5/11/17	11:37:00	AC-1	543155	30	7.0	2.3	<0.01	0.50	<0.05			0.018	
5/11/17	11:00:00	AC-2	543156	50	19.3	2.0	<0.01	0.29	<0.05			0.029	
5/11/17	13:00:00	CP-11	543152	5000	5.0	4.5	2.10	1.27	0.11			0.294	
5/11/17	12:40:00	CP-18	543153	20	<4	<4	<0.01	0.32	<0.05			0.022	
5/11/17	12:30:00	CP-7	543154	40	5.6	2.3	0.02	0.47	<0.05			0.028	
5/24/17	11:10:00	AC-1	543878	90	3	<3	0.02	0.41	<0.05			0.014	
5/24/17	10:35:00	AC-2	543879	20	5.3	1.6	<0.01	0.15	<0.05			0.028	
5/24/17	12:45:00	CP-11	543875	41000	10.2	9.3	0.97	0.76	0.26			0.283	
5/24/17	11:45:00	CP-18	543876	330	<4	<4	0.01	0.28	<0.05			0.028	

Sample Date	Sample Time	Sample Location	Record #	<i>E.coli</i> CFU/100 mL	Total Suspended Solids (mg/L)	Volatile Suspended Solids (mg/L)	Ammonia + Ammonium as N (mg/L)	Nitrate as N (mg/L)	Nitrite as N (mg/L)	o-Phosphate as P (mg/L)	Phosphorus Dissolved Total (mg/L)	Phosphorus Total (mg/L)	Caffeine (ug/L)
5/24/17	11:30:00	CP-7	543877	80	<4	<4	0.02	0.53	<0.05			0.024	
6/07/17	11:45:00	AC-1	544640	760	4.3	1.3	<0.01	0.52	<0.05			0.032	
6/07/17	10:55:00	AC-2	544641	230	7.9	2.0	<0.01	0.26	<0.05			0.025	
6/07/17	13:10:00	CP-11	544637	440000	12.0	11.7	1.84	0.68	0.16			0.454	
6/07/17	12:05:00	CP-18	544638	630	9.6	3.6	<0.01	1.10	<0.05			0.063	
6/07/17	11:55:00	CP-7	544639	630	9.6	3.2	<0.01	0.79	<0.05			0.040	
6/21/17	12:15:00	AC-1	545919	2900	60.0	7.2	0.10	1.81	<0.1			0.121	
6/21/17	11:20:00	AC-2	545920	2180	74.7	7.3	0.09	1.53	0.23			0.130	
6/21/17	13:40:00	CP-11	545916	40000	18.7	9.3	0.83	<0.1	<0.1			0.293	
6/21/17	13:10:00	CP-18	545917	750	12.0	2.9	0.02	0.18	<0.1			0.074	
6/21/17	13:00:00	CP-7	545918	2100	22.5	3.2	0.06	0.76	<0.1			0.069	
7/05/17	11:30:00	AC-1	547438	290	17.1	3.2	0.05	0.63	<0.05			0.040	
7/05/17	10:55:00	AC-2	547439	220	25.8	3.4	0.03	0.41	<0.05			0.048	
7/05/17	12:10:00	CP-11	547435	4000	41.3	27.3	0.46	0.22	0.16			0.466	
7/05/17	11:50:00	CP-18	547436	160	4.4	1.9	0.02	0.46	<0.05			0.042	
7/05/17	11:40:00	CP-7	547437	300	10.4	2.9	0.05	0.54	<0.05			0.044	
7/19/17	11:00:00	AC-1	548181	560	27.1	3.5	0.03	0.60	0.05			0.045	
7/19/17	10:25:00	AC-2	548182	250	35.7	4.1	0.02	0.44	<0.05			0.044	
7/19/17	11:40:00	CP-11	548178	800	28.9	21.2	0.10	0.17	0.07			0.359	
7/19/17	11:20:00	CP-18	548179	50	3.2	2.0	0.01	0.18	<0.05			0.037	
7/19/17	11:10:00	CP-7	548180	320	19.2	4.3	0.04	0.51	<0.05			0.057	
7/27/17	12:10:00	AC-1	548803	520	23.0	4.0	0.03	0.62	<0.05			0.047	
7/27/17	11:30:00	AC-2	548804	340	25.7	3.4	0.02	0.45	<0.05			0.040	
7/27/17	12:45:00	CP-11	548800	2680	24.4	18.5	0.75	0.77	0.12			0.484	
7/27/17	12:30:00	CP-18	548801	120	2.6	1.4	0.02	0.22	<0.05			0.040	
7/27/17	12:20:00	CP-7	548802	930	17.8	3.2	0.04	0.56	<0.05			0.054	
8/12/17	10:00:00	AC-1	549935		335	30.0	0.04	0.50	<0.1			0.352	
8/16/17	11:40:00	AC-1	550011	1300	6.2	3.3	0.02	0.56	<0.1			0.025	
8/16/17	12:50:00	AC-2	550012	330	4.2	2.3	0.01	0.42	<0.1			0.015	
8/16/17	13:40:00	CP-11	550008	3400	42.0	34.0	0.28	0.84	<0.1			0.540	
8/16/17	11:15:00	CP-18	550009	110	4.4	2.9	<0.01	0.19	<0.1			0.044	
8/16/17	11:30:00	CP-7	550010	400	13.8	4.8	0.03	0.39	<0.1			0.057	
8/30/17	11:25:00	AC-1	551374	510	3.6	1.2	0.02	0.48	<0.1			0.016	

Sample Date	Sample Time	Sample Location	Record #	<i>E.coli</i> CFU/100 mL	Total Suspended Solids (mg/L)	Volatile Suspended Solids (mg/L)	Ammonia + Ammonium as N (mg/L)	Nitrate as N (mg/L)	Nitrite as N (mg/L)	o-Phosphate as P (mg/L)	Phosphorus Dissolved Total (mg/L)	Phosphorus Total (mg/L)	Caffeine (ug/L)
8/30/17	10:40:00	AC-2	551375	240	8.2	1.4	<0.01	0.35	<0.1			0.022	
8/30/17	12:05:00	CP-11	551371	670	42.8	32.8	0.87	0.99	0.13			0.630	
8/30/17	11:45:00	CP-18	551372	150	5.8	1.8	0.01	<0.1	<0.1			0.046	
8/30/17	11:40:00	CP-7	551373	310	11.6	1.4	0.04	0.41	<0.1			0.036	
9/15/17	12:00:00	AC-1	552557	420	4.9	1.4	0.02	0.51	<0.1			0.024	
9/15/17	11:15:00	AC-2	552558	120	4.6	1.1	<0.01	0.44	<0.1			0.020	
9/15/17	12:30:00	CP-11	552554	1120	29.0	22.0	0.99	1.36	0.11			0.740	
9/15/17	12:15:00	CP-18	552555	40	4.7	1.4	0.02	<0.1	<0.1			0.047	
9/15/17	12:05:00	CP-7	552556	280	16.0	2.3	0.11	0.40	<0.1			0.050	
9/27/17	10:25:00	AC-1	553708	180	5.0	1.5	0.03	0.34	<0.1			0.029	
9/27/17	9:50:00	AC-2	553709	970	3.2	1.8	<0.01	0.26	<0.1			0.016	
9/27/17	11:30:00	CP-11	553705	200	32.3	24.3	1.86	0.99	0.12			0.709	
9/27/17	11:15:00	CP-18	553706	<10	10.2	2.4	0.02	<0.1	<0.1			0.054	
9/27/17	11:00:00	CP-7	553707	850	15.8	3.5	0.07	0.42	<0.1			0.045	
10/11/17	10:00:00	AC-1	554891	740	8.3	1.3	0.03	0.42	<0.1			0.044	
10/11/17	11:10:00	AC-2	554892	260	10.2	2.0	<0.01	0.31	<0.1			0.030	
10/11/17	12:15:00	CP-11	554888	1540000	10.5	7.7	3.02	<0.1	<0.1			0.742	
10/11/17	11:45:00	CP-18	554889	100	3.1	1.5	<0.01	0.13	<0.1			0.052	
10/11/17	12:00:00	CP-7	554890	720	10.9	2.6	0.08	0.50	<0.1			0.054	
10/25/17	12:25:00	AC-1	555753	270	4.4	1.6	0.01	0.32	<0.05			0.033	
10/25/17	11:40:00	AC-2	555754	170	7.9	<0.8	<0.01	0.24	<0.05			0.024	
10/25/17	13:00:00	CP-11	555750	210000	8.8	5.0	1.28	1.56	<0.05			0.485	
10/25/17	12:40:00	CP-18	555751	210	2.4	1.6	<0.01	<0.05	<0.05			0.050	
10/25/17	12:35:00	CP-7	555752	470	10.0	1.6	0.04	0.24	<0.05			0.050	
11/02/17	22:00:00	AC-1	556750	2200	123	14.0	0.02	0.53	<0.05			0.174	
11/08/17	11:10:00	AC-1	557179	2400	<4	<4	0.02	0.38	<0.1			0.025	
11/08/17	10:40:00	AC-2	557180	<100	5.2	1.4	0.01	0.22	<0.1			0.020	
11/08/17	12:00:00	CP-11	557176	6400	5.9	3.9	0.38	2.50	<0.1			0.278	
11/08/17	11:40:00	CP-18	557177	100	<4	<4	<0.01	0.11	<0.1			0.040	
11/08/17	11:30:00	CP-7	557178	100	6.7	4.4	0.02	0.35	<0.1			0.035	
11/20/17	11:00:00	AC-1	557811	300	82.1	9.2	0.01	0.44	<0.05			0.120	
11/20/17	11:05:00	AC-2	557812	700	24.4	8.5	0.02	0.74	<0.05			0.132	
11/22/17	11:30:00	AC-1	557958	460	5.0	2.2	0.02	0.54	<0.05			0.022	

Sample Date	Sample Time	Sample Location	Record #	<i>E.coli</i> CFU/100 mL	Total Suspended Solids (mg/L)	Volatile Suspended Solids (mg/L)	Ammonia + Ammonium as N (mg/L)	Nitrate as N (mg/L)	Nitrite as N (mg/L)	o-Phosphate as P (mg/L)	Phosphorus Dissolved Total (mg/L)	Phosphorus Total (mg/L)	Caffeine (ug/L)
11/22/17	11:05:00	AC-2	557959	30	11.1	2.2	0.01	0.42	<0.05			0.020	
11/22/17	12:20:00	CP-11	557955	181000	11.5	7.0	2.09	2.36	<0.05			0.495	
11/22/17	12:05:00	CP-18	557956	20	2.9	1.7	<0.01	0.57	<0.05			0.041	
11/22/17	11:50:00	CP-7	557957	80	4.6	2.2	0.02	0.72	<0.05			0.041	
12/06/17	11:50:00	AC-1	559282	130	3.6	1.6	0.02	0.48	<0.05			0.018	
12/06/17	11:15:00	AC-2	559283	50	5.2	1.2	0.01	0.37	<0.05			0.013	
12/06/17	12:25:00	CP-11	559279	83000	8.8	5.2	1.36	2.31	<0.05			0.377	
12/06/17	12:00:00	CP-18	559280	20	<3	<3	<0.01	0.49	<0.05			0.026	
12/06/17	11:55:00	CP-7	559281	1070	<4	<4	0.02	0.79	<0.05			0.026	
12/20/17	11:45:00	AC-1	560716	480	6.0	2.6	0.02	0.61	<0.05			0.018	
12/20/17	12:10:00	AC-2	560717	30	9.9	2.9	0.02	0.46	<0.05			0.017	
12/20/17	12:50:00	CP-11	560713	2600	13.2	5.4	0.71	2.58	<0.05			0.276	
12/20/17	11:25:00	CP-18	560714	100	<3	<3	<0.01	0.79	<0.05			0.025	
12/20/17	11:35:00	CP-7	560715	90	3.9	2.2	0.03	0.86	<0.05			0.023	
1/03/18	13:00:00	AC-1	561373	400	<3	<3	0.04	0.74	<0.05	<0.05		0.016	
1/03/18	12:00:00	AC-2	561374	<10	9.6	4.0	0.02	0.65	<0.05	<0.05		0.017	
1/03/18	12:45:00	CP-18	561372	40	<3	<3	<0.01	0.59	<0.05	<0.05		0.023	
1/17/18	11:30:00	AC-1	561832	150	5.9	2.5	0.05	1.04	<0.05	<0.05		0.029	
1/17/18	10:45:00	AC-2	561833	30	11.2	2.4	0.04	0.86	<0.05	<0.05		0.022	
1/17/18	12:15:00	CP-11	561829	12400	6.0	3.0	0.37	2.96	<0.05	0.16		0.202	
1/17/18	11:55:00	CP-18	561830	10	<4	<4	0.10	2.03	<0.05	0.05		0.059	
1/17/18	11:40:00	CP-7	561831	140	8.0	2.5	0.05	2.08	<0.05	<0.05		0.053	
2/13/18	12:40:00	AC-1	563196	160	11.6	2.4	0.07	0.74	<0.01	<0.05		0.025	
2/13/18	12:05:00	AC-2	563197	30	21.6	2.8	0.05	0.68	<0.05	<0.05		0.029	
2/13/18	13:20:00	CP-11	563193	11000	19.2	12.4	3.45	0.86	0.06	0.46		0.708	
2/13/18	13:05:00	CP-18	563194	60	<3	<3	0.14	0.71	<0.05	<0.05		0.032	
2/13/18	12:50:00	CP-7	563195	<10	9.6	2.0	0.05	0.54	<0.05	<0.05		0.028	
2/14/18	10:30:00	AC-1	563507	70	10.0	3.2	0.04	0.80	<0.05	<0.05		0.024	
2/14/18	10:00:00	AC-2	563508	30	12.4	2.8	0.04	0.68	<0.05	<0.05		0.025	
2/14/18	11:05:00	CP-11	563504	109000	13.6	10.8	2.58	2.05	0.07	0.22		0.496	
2/14/18	10:50:00	CP-18	563505	50	<3	<3	0.14	1.47	<0.05	<0.05		0.031	
2/14/18	10:45:00	CP-7	563506	40	4.8	2.0	0.04	1.08	<0.05	<0.05		0.021	
2/28/18	11:35:00	AC-1	564376	30	41.0	4.5	0.02	0.88	<0.05	0.06		0.067	

Sample Date	Sample Time	Sample Location	Record #	<i>E.coli</i> CFU/100 mL	Total Suspended Solids (mg/L)	Volatile Suspended Solids (mg/L)	Ammonia + Ammonium as N (mg/L)	Nitrate as N (mg/L)	Nitrite as N (mg/L)	o-Phosphate as P (mg/L)	Phosphorus Dissolved Total (mg/L)	Phosphorus Total (mg/L)	Caffeine (ug/L)
2/28/18	10:45:00	AC-2	564377	20	69.2	5.6	0.02	0.75	<0.05	0.09		0.089	
2/28/18	11:50:00	CP-11	564373	37000	9.7	5.1	1.23	2.68	0.05	0.22		0.276	
2/28/18	11:20:00	CP-18	564374	10	12.0	3.3	0.19	1.70	0.12	0.06		0.063	
2/28/18	11:15:00	CP-7	564375	20	7.1	<0.8	0.01	1.03	<0.05	<0.05		0.041	
3/14/18	11:50:00	AC-1	564892	120	9.2	3.6	0.02	0.66	<0.05	<0.05		0.026	
3/14/18	11:10:00	AC-2	564893	20	10.7	3.0	0.02	0.58	<0.05	<0.05		0.028	
3/14/18	12:25:00	CP-11	564889	210000	12.7	8.1	3.06	1.69	0.10	0.39		0.696	
3/14/18	12:05:00	CP-18	564890	10	<4	<4	<0.01	0.92	<0.05	<0.05		0.025	
3/14/18	12:00:00	CP-7	564891	10	6.6	3.5	0.01	0.89	<0.05	<0.05		0.029	
3/28/18	11:05:00	AC-1	566696	180	5.6	2.4	<0.01	0.63	0.32	<0.05		0.020	
3/28/18	10:30:00	AC-2	566697	20	12.2	2.3	<0.01	0.51	<0.05	<0.05		0.025	
3/28/18	11:40:00	CP-11	566693	420000	20.6	15.9	6.62	1.48	0.15	0.39		0.951	
3/28/18	11:20:00	CP-18	566694	170	12.6	5.7	0.01	0.37	<0.05	<0.05		0.054	
3/28/18	11:15:00	CP-7	566695	60	3.2	1.4	<0.01	0.80	<0.05	<0.05		0.016	
4/11/18	11:15:00	AC-1	567828	130	6.5	1.5	<0.01	0.60	<0.1			0.016	
4/11/18	10:40:00	AC-2	567829	10	17.9	2.1	<0.01	0.46	<0.1			0.032	
4/11/18	12:40:00	CC-3	567833	21900	4.0	4.0	0.34	2.37	<0.1			0.163	
4/11/18	12:30:00	CC-5	567834	130	<2	<2	<0.01	1.61	<0.1			0.160	
4/11/18	13:40:00	CC-7	567835	650	2.2	1.6	0.02	1.59	<0.1			0.075	
4/11/18	13:15:00	CC-9	567836	8000	25.2	8.0	0.15	2.99	0.23			0.175	
4/11/18	13:00:00	CP-11	567826	290000	13.1	9.5	3.63	2.05	<0.1			0.582	
4/11/18	11:30:00	CP-18	567827	10	2.6	1.9	<0.01	0.80	<0.1			0.019	
4/11/18	11:20:00	CP-7	567825	10	4.8	1.5	<0.01	0.70	<0.1			0.021	
4/25/18	12:00:00	AC-1	568408	370	245	14.0	0.01	0.68	0.24			0.238	
4/25/18	11:15:00	AC-2	568409	160	415	18.5	0.02	0.56	<0.1			0.342	
4/25/18	12:45:00	CC-3	568413	16000	10.6	5.6	0.11	2.44	<0.1			0.123	
4/25/18	12:30:00	CC-5	568414	2800	17.3	4.3	0.03	1.45	<0.1			0.128	
4/25/18	10:20:00	CC-7	568415	6600	27.0	5.0	0.09	0.82	<0.1			0.101	
4/25/18	13:00:00	CC-9	568416	18000	26.0	7.1	0.25	1.59	<0.1			0.162	
4/25/18	13:20:00	CP-11	568406	580000	26.4	14.8	3.36	1.17	<0.1			0.801	
4/25/18	12:15:00	CP-18	568407	130	24.6	3.1	0.01	1.06	<0.1			0.076	
4/25/18	12:10:00	CP-7	568405	140	49.0	3.6	0.02	0.72	<0.1			0.058	
5/02/18	9:01:00	CP-11.2	568546	13000	11.7	8.6	5.06				0.370	0.796	

Sample Date	Sample Time	Sample Location	Record #	<i>E.coli</i> CFU/100 mL	Total Suspended Solids (mg/L)	Volatile Suspended Solids (mg/L)	Ammonia + Ammonium as N (mg/L)	Nitrate as N (mg/L)	Nitrite as N (mg/L)	o-Phosphate as P (mg/L)	Phosphorus Dissolved Total (mg/L)	Phosphorus Total (mg/L)	Caffeine (ug/L)
5/04/18	9:00:00	AC-1	568919	960	112	10.3	0.04	0.42	<0.1			0.164	
5/09/18	12:00:00	AC-1	569304	50	4.2	1.7	0.02	0.41	<0.05			0.012	
5/09/18	11:20:00	AC-2	569305	40	5.0	1.8	<0.01	0.26	<0.05			0.012	
5/09/18	13:00:00	CC-3	569310	4800	4.4	2.9	0.24	2.58	0.06			0.152	
5/09/18	12:45:00	CC-5	569311	440	4.0	1.4	<0.01	1.92	<0.05			0.154	
5/09/18	12:05:00	CC-7	569312	1020	3.0	2.2	0.01	1.79	0.06			0.076	
5/09/18	13:30:00	CC-9	569313	3200	8.5	3.3	0.15	3.07	0.08			0.264	
5/09/18	13:10:00	CP-11	569302	650000	21.0	18.0	8.65	0.48	0.17			1.22	
5/09/18	12:15:00	CP-18	569303	50	<3	<3	0.02	0.15	<0.05			0.012	
5/09/18	12:05:00	CP-7	569301	30	7.6	4.4	0.02	0.27	<0.05			0.033	
5/16/18	8:10:00	CP-11.2	569439	108000	26.8	15.6	2.98				0.242	0.697	
5/23/18	11:05:00	AC-1	569900	270	7.8	1.0	0.01	0.45	<0.1			0.018	
5/23/18	10:30:00	AC-2	569901	100	10.7	<0.8	<0.01	0.26	<0.1			0.020	
5/23/18	12:10:00	CC-3	569904	590	6.7	3.6	0.39	2.39	0.10			0.193	
5/23/18	11:55:00	CC-5	569905	820	10.0	1.7	<0.01	2.33	<0.1			0.202	
5/23/18	9:45:00	CC-7	569906	4200	9.8	1.6	0.09	1.95	<0.1			0.119	
5/23/18	12:30:00	CC-9	569907	3200	4.4	1.3	0.14	3.25	<0.1			0.258	
5/23/18	12:45:00	CP-11	569898	660000	25.8	16.5	5.36	<0.1	<0.1			1.04	
5/23/18	11:30:00	CP-18	569899	220	6.2	2.3	<0.01	0.26	<0.1			0.034	
5/23/18	11:15:00	CP-7	569897	140	11.4	2.4	0.04	0.32	<0.1			0.038	
5/30/18	8:33:00	CP-11.2	570121	50000	29.5	19.5	2.03				0.124	0.687	
6/07/18	11:50:00	AC-1	570589	270	5.5	1.7	0.04	0.69	<0.05			0.029	
6/07/18	11:15:00	AC-2	570590	180	5.0	1.5	0.02	0.49	<0.05			0.021	
6/07/18	13:30:00	CC-3	570593	15800	2.9	2.9	0.52	1.85	0.11			0.267	
6/07/18	12:45:00	CC-5	570594	600	15.7	3.1	0.04	2.59	<0.05			0.341	
6/07/18	10:20:00	CC-7	570595	570	5.9	2.3	0.16	1.91	0.16			0.207	
6/07/18	13:50:00	CC-9	570596	5900	<2	<2	0.16	3.45	0.05			0.327	
6/07/18	13:10:00	CP-11	570587	3600000	23.9	21.3	13.1	<0.05	0.12			2.03	
6/07/18	12:25:00	CP-18	570588	210	5.4	1.7	0.05	0.43	<0.05			0.060	
6/07/18	12:05:00	CP-7	570586	290	9.6	2.6	0.04	0.52	<0.05			0.046	
6/13/18	8:49:00	CP-11.2	570990	11700	125	66.9	1.33				0.053	0.580	
6/19/18	11:00:00	AC-1	571416	7500	214	19.8	0.06	0.70	0.08			0.302	
6/20/18	12:15:00	AC-1	571459	1600	21.3	4.0	0.05	0.58	<0.05			0.055	

Sample Date	Sample Time	Sample Location	Record #	<i>E.coli</i> CFU/100 mL	Total Suspended Solids (mg/L)	Volatile Suspended Solids (mg/L)	Ammonia + Ammonium as N (mg/L)	Nitrate as N (mg/L)	Nitrite as N (mg/L)	o-Phosphate as P (mg/L)	Phosphorus Dissolved Total (mg/L)	Phosphorus Total (mg/L)	Caffeine (ug/L)
6/20/18	11:40:00	AC-2	571460	880	22.6	3.4	0.03	0.47	<0.05			0.049	
6/20/18	13:40:00	CC-3	571466	3000	10.0	3.4	0.02	2.08	<0.05			0.223	
6/20/18	13:25:00	CC-5	571467	3600	12.9	2.3	0.02	2.79	<0.05			0.436	
6/20/18	10:20:00	CC-7	571468	4600	8.0	2.8	0.05	2.07	0.28			0.250	
6/20/18	14:45:00	CC-9	571469	1700	3.1	1.4	<0.01	2.89	0.12			0.253	
6/20/18	13:55:00	CP-11	571457	2500000	36.3	28.4	6.54	<0.05	<0.05			1.39	
6/20/18	14:05:00	P-11 Outlet	571463	3400000	46.8	45.6	14.2	0.83	0.19			2.69	
6/20/18	12:55:00	CP-18	571458	450	12.8	3.2	0.02	0.66	<0.05			0.089	
6/20/18	12:40:00	CP-7	571456	890	14.7	4.0	0.06	0.52	<0.05			0.056	
6/27/18	8:03:00	CP-11.2	571894	128000	37.6	20.0	1.74				0.040	0.490	
7/04/18	11:40:00	AC-1	572018	900	13.4	3.2	0.04	0.60	<0.05			0.049	
7/04/18	11:00:00	AC-2	572019	700	13.8	2.7	0.03	0.47	<0.05			0.041	
7/04/18	14:05:00	CC-3	572023	81000	8.5	4.0	0.15	2.32	0.05			0.260	
7/04/18	13:20:00	CC-5	572024	3200	13.7	3.4	0.03	2.65	<0.05			0.398	
7/04/18	10:00:00	CC-7	572025	6100	4.9	3.7	0.02	2.26	<0.05			0.180	
7/04/18	14:20:00	CC-9	572026	1170	7.6	1.8	<0.01	3.20	0.09			0.288	
7/04/18	13:50:00	CP-11	572016	1160000	47.4	42.1	5.88	<0.05	<0.05			1.56	
7/04/18	13:40:00	P-11 Outlet	572021	4900000	58.0	51.6	13.8	0.53	0.10			2.78	
7/04/18	12:05:00	CP-18	572017	510	5.4	1.7	0.04	0.58	<0.05			0.068	
7/04/18	11:50:00	CP-7	572015	1200	16.5	16.5	0.04	0.76	<0.05			0.062	
7/11/18	10:21:00	CP-11.2	572775	102000	61.0	36.0	2.70				0.105	0.970	
7/18/18	11:30:00	AC-1	573218	760	6.4	2.1	0.02	0.48	<0.05			0.029	
7/18/18	10:50:00	AC-2	573219	520	6.2	2.1	0.02	0.46	<0.05			0.018	
7/18/18	14:15:00	CC-2	573227	420									
7/18/18	13:05:00	CC-3	573223	104000	14.1	6.1	0.15	2.03	0.07			0.264	
7/18/18	12:55:00	CC-5	573224	580	12.3	1.8	0.09	1.95	<0.05			0.361	
7/18/18	10:05:00	CC-7	573225	1400	11.3	2.5	0.04	0.56	<0.05			0.034	
7/18/18	13:25:00	CC-9	573226	590	3.2	<0.8	<0.01	2.66	<0.05			0.263	
7/18/18	13:50:00	CP-11	573216	1800000	60.8	55.7	5.49	<0.05	<0.05			1.61	
7/18/18	13:40:00	P-11 Outlet	573221	3800000	31.6	27.6	6.70	1.17	0.07			1.33	
7/18/18	11:55:00	CP-18	573217	1170	13.0	4.6	0.08	0.59	<0.05			0.074	
7/18/18	11:35:00	CP-7	573215	640	<4	<4	0.02	2.17	<0.05			0.262	
7/25/18	7:49:00	CP-11.2	574356	4200	35.5	19.3	1.28				0.258	0.703	

Sample Date	Sample Time	Sample Location	Record #	<i>E.coli</i> CFU/100 mL	Total Suspended Solids (mg/L)	Volatile Suspended Solids (mg/L)	Ammonia + Ammonium as N (mg/L)	Nitrate as N (mg/L)	Nitrite as N (mg/L)	o-Phosphate as P (mg/L)	Phosphorus Dissolved Total (mg/L)	Phosphorus Total (mg/L)	Caffeine (ug/L)
8/01/18	11:55:00	AC-1	574598	580	7.3	2.0	0.02	0.48	<0.05			0.027	
8/01/18	11:25:00	AC-2	574599	520	4.5	1.3	0.01	0.40	<0.05			0.014	
8/01/18	14:20:00	CC-2	574602	470									
8/01/18	13:25:00	CC-3	574603	610000	9.6	4.7	0.18	2.43	0.26			0.246	
8/01/18	13:10:00	CC-5	574604	330	8.5	1.3	0.10	2.44	<0.05			0.351	
8/01/18	10:20:00	CC-7	574605	950	10.6	1.7	0.02	2.66	0.76			0.172	
8/01/18	13:40:00	CC-9	574606	1630	5.7	2.3	<0.01	3.15	<0.05			0.271	
8/01/18	14:10:00	CP-11	574595	1000	28.9	12.9	1.39	1.48	0.37			0.423	
8/01/18	13:55:00	P-11 Outlk	574596	20000	5.7	1.2	0.07	2.32	0.20			0.213	
8/01/18	12:25:00	CP-18	574597	1100	<3	<3	0.02	0.26	<0.05			0.038	
8/01/18	12:10:00	CP-7	574594	630	16.5	3.3	0.06	0.48	<0.05			0.045	
8/08/18	9:40:00	CP-11.2	574980	1670	38.0	9.0	1.90				0.488	0.920	
8/15/18	11:30:00	AC-1	575773	450	5.6	1.6	0.02	0.47	<0.05			0.025	
8/15/18	10:50:00	AC-2	575774	560	4.8	1.0	0.01	0.40	<0.05			0.014	
8/15/18	13:10:00	CC-10	575778	960	10.1	2.4	<0.01	1.89	<0.05			0.19	
8/15/18	14:10:00	CC-2	575779	60									
8/15/18	12:55:00	CC-3	575780	5000	16.0	4.4	0.02	2.24	<0.05			0.217	
8/15/18	12:25:00	CC-5	575781	500	7.0	1.6	0.01	2.53	0.16			0.396	
8/15/18	12:35:00	CC-5A	575777	530									
8/15/18	10:05:00	CC-7	575782	1600	4.2	1.4	0.01	2.29	<0.05			0.191	
8/15/18	13:30:00	CC-9	575783	9000	3.2	2.4	0.01	3.05	<0.05			0.291	
8/15/18	13:55:00	CP-11	575770	7300	47.4	39.2	1.16	1.05	0.11			0.935	
8/15/18	13:45:00	P-11 Outlk	575771	1400	10.2	1.6	0.07	2.27	<0.05			0.215	
8/15/18	11:50:00	CP-18	575772	790	3.5	1.2	0.06	0.48	<0.05			0.061	
8/15/18	11:35:00	CP-7	575769	380	19.1	3.9	0.06	0.47	<0.05			0.049	
8/22/18	10:10:00	AC-1	575922	6800	276	32.6	0.01	0.37	<0.05			0.319	
8/22/18	11:33:00	CP-11.2	575917	16000	25.5	7.4	0.20				0.271	0.490	
8/29/18	11:15:00	AC-1	576088	680	7.5	1.4	0.02	0.44	<0.05			0.036	
8/29/18	10:40:00	AC-2	576089	1500	7.2	1.4	<0.01	0.37	<0.05			0.022	
8/29/18	12:45:00	CC-10	576092	590	6.1	1.3	<0.01	1.68	<0.05			0.16	
8/29/18	14:20:00	CC-2	576094	720									
8/29/18	12:30:00	CC-3	576095	110000	10.5	3.3	0.04	1.55	<0.05			0.167	
8/29/18	12:00:00	CC-5	576096	520	6.2	1.8	0.01	2.96	0.11			0.397	

Chedoke Creek Laboratory Data from RBG and HCA

Sample Date	Sample Time	Sample Location	Record #	<i>E.coli</i> CFU/100 mL	Total Suspended Solids (mg/L)	Volatile Suspended Solids (mg/L)	Ammonia + Ammonium as N (mg/L)	Nitrate as N (mg/L)	Nitrite as N (mg/L)	o-Phosphate as P (mg/L)	Phosphorus Dissolved Total (mg/L)	Phosphorus Total (mg/L)	Caffeine (ug/L)
8/29/18	12:15:00	CC-5A	576093	730									
8/29/18	9:55:00	CC-7	576097	440	2.5	1.2	0.01	2.43	<0.05			0.195	
8/29/18	13:00:00	CC-9	576098	2200	4.5	1.6	<0.01	2.92	<0.05			0.262	
8/29/18	13:40:00	CP-11	576085	190	8.1	2.3	1.15	1.35	0.10			0.312	
8/29/18	14:10:00	P-11 Outlet	576086	460	6.2	1.5	0.03	2.12	<0.05			0.195	
8/29/18	13:40:00	11 Right E	576099	880									
8/29/18	11:40:00	CP-18	576087	160	<3	<3	0.19	0.35	<0.05			0.046	
8/29/18	11:25:00	CP-7	576084	1500	22.4	4.2	0.09	0.31	<0.05			0.067	
9/05/18	9:17:00	CP-11.2	576302	240	37.6	13.2	1.27				0.324	0.641	
9/10/18	12:00:00	AC-1	576571	6700	189	16.6	<0.01	0.40	<0.05			0.216	
9/11/18	11:25:00	AC-1	576610	2800	16.0	2.4	0.02	0.47	0.29			0.050	
9/11/18	10:50:00	AC-2	576611	970	7.6	2.4	<0.01	0.34	<0.05			0.025	
9/11/18	12:55:00	CC-10	576620	3500	6.2	1.7	<0.01	1.89	<0.05			0.142	
9/11/18	13:50:00	CC-2	576614	2800									
9/11/18	12:40:00	CC-3	576615	6400	12.0	3.2	<0.01	2.23	<0.05			0.208	
9/11/18	12:10:00	CC-5	576616	250	8.4	2.8	0.01	1.77	0.72			0.196	
9/11/18	12:20:00	CC-5A	576617	560									
9/11/18	10:05:00	CC-7	576618	6000	<2	<2	0.04	1.68	0.16			0.149	
9/11/18	13:10:00	CC-9	576619	7200	2.7	1.0	0.02	3.23	0.54			0.248	
9/11/18	13:40:00	CP-11	576607	12300	14.4	4.4	0.49	1.83	<0.05			0.240	
9/11/18	13:25:00	P-11 Outlet	576608	3300	8.4	2.4	0.02	2.08	<0.05			0.187	
9/11/18	11:50:00	CP-18	576609	2600	7.6	1.2	0.03	0.33	<0.05			0.062	
9/11/18	11:35:00	CP-7	576606	1800	20.8	4.0	0.05	0.53	<0.05			0.054	
9/19/18	10:10:00	CP-11.2	577411	20	16.4	10.0	0.90				0.206	0.451	
9/27/18	12:10:00	AC-1	578021	460	5.2	3.2	0.02	0.37	<0.05			0.040	
9/27/18	11:30:00	AC-2	578022	370	<3	<3	<0.01	0.19	<0.05			0.025	
9/27/18	14:35:00	CC-2	578025	1400									
9/27/18	13:35:00	CC-3	578026	800	8.6	1.8	<0.01	2.44	0.11			0.248	
9/27/18	13:10:00	CC-5	578027	650	5.2	1.0	<0.01	2.22	<0.05			0.357	
9/27/18	10:45:00	CC-7	578028	4700	8.8	2.2	0.07	2.21	0.10			0.243	
9/27/18	13:50:00	CC-9	578029	7100	3.8	1.8	0.02	3.51	0.42			0.326	
9/27/18	14:25:00	CP-11	578018	7200	23.2	6.0	0.69	1.53	0.43			0.262	
9/27/18	14:15:00	P-11 Outlet	578019	9100	4.0	3.6	0.02	2.31	0.10			0.226	

Sample Date	Sample Time	Sample Location	Record #	<i>E.coli</i> CFU/100 mL	Total Suspended Solids (mg/L)	Volatile Suspended Solids (mg/L)	Ammonia + Ammonium as N (mg/L)	Nitrate as N (mg/L)	Nitrite as N (mg/L)	o-Phosphate as P (mg/L)	Phosphorus Dissolved Total (mg/L)	Phosphorus Total (mg/L)	Caffeine (ug/L)
9/27/18	12:30:00	CP-18	578020	340	5.2	3.2	0.06	0.28	0.38			0.082	
9/27/18	12:20:00	CP-7	578017	650	13.2	3.6	0.08	0.50	<0.05			0.061	
10/10/18	13:35:00	AC-1	579171	810	<3	<3	0.01	0.42	0.08			0.032	
10/10/18	10:50:00	AC-2	579172	210	3.2	2.4	<0.01	0.29	<0.05			0.022	
10/10/18	14:05:00	CC-3	579175	810	6.4	3.2	0.01	2.60	0.16			0.230	
10/10/18	13:50:00	CC-5	579176	700	7.2	2.0	<0.01	3.08	<0.05			0.393	
10/10/18	10:00:00	CC-7	579177	3800	1.6	1.6	0.02	2.63	<0.05			0.263	
10/10/18	14:20:00	CC-9	579178	2900	5.6	1.8	0.01	3.61	0.20			0.338	
10/10/18	14:35:00	CP-11	579169	830	7.6	2.0	0.74	2.21	0.08			0.240	
10/10/18	13:00:00	CP-18	579170	40	<3	<3	0.06	0.30	<0.05			0.046	
10/10/18	13:20:00	CP-7	579168	120	9.2	2.8	0.04	0.48	<0.05			0.051	
10/31/18	11:45:00	AC-1	580511	2200	119	13.4	0.03	0.54	<0.05			0.182	
10/31/18	11:05:00	AC-2	580512	1430	22.9	3.4	0.02	0.31	<0.05			0.076	
10/31/18	12:40:00	CC-3	580515	7000	24.2	8.1	0.01	1.32	<0.05			0.291	
10/31/18	12:30:00	CC-5	580516	6200	23.5	4.6	0.02	1.36	<0.05			0.206	
10/31/18	11:55:00	CC-7	580517	11100	42.8	7.2	0.20	0.50	<0.05			0.190	
10/31/18	13:05:00	CC-9	580518	34000	14.6	3.7	0.16	0.96	0.09			0.172	
10/31/18	13:20:00	CP-11	580509	35000	24.6	5.6	0.21	0.77	0.06			0.181	
10/31/18	12:10:00	CP-18	580510	370	12.8	3.3	0.07	0.35	<0.05			0.097	
10/31/18	11:55:00	CP-7	580508	3100	53.5	8.1	0.06	0.48	<0.05			0.112	
11/07/18	11:30:00	AC-1	581009	320	6.4	1.6	0.01	0.51	<0.05			0.032	
11/07/18	11:00:00	AC-2	581010	80	4.8	1.2	0.02	0.40	<0.05			0.023	
11/07/18	12:45:00	CC-3	581013	4100	<3	<3	0.06	2.32	<0.05			0.123	
11/07/18	12:30:00	CC-5	581014	900	4.0	2.0	<0.01	2.26	<0.05			0.180	
11/07/18	10:15:00	CC-7	581015	600	<3	<3	0.14	2.43	0.77			0.177	
11/07/18	13:00:00	CC-9	581016	6300	3.6	2.4	0.10	3.58	0.72			0.251	
11/07/18	13:15:00	CP-11	581007	900	6.4	2.0	0.24	2.38	<0.05			0.186	
11/07/18	11:55:00	CP-18	581008	40	<3	<3	0.04	0.91	<0.05			0.058	
11/07/18	11:45:00	CP-7	581006	70	11.2	1.9	0.03	0.90	<0.05			0.082	
11/20/18	12:05:00	AC-1	581867	460	2.1	<0.8	0.01	0.58	<0.05			0.018	
11/20/18	11:35:00	AC-2	581868	140	2.8	<0.8	<0.01	0.46	<0.05			0.015	
11/20/18	13:05:00	CC-3	581871	11000	<2	<2	0.08	2.03	<0.05			0.152	
11/20/18	12:55:00	CC-5	581872	600	27.1	2.9	<0.01	2.35	<0.05			0.362	

Chedoke Creek Laboratory Data from RBG and HCA

Sample Date	Sample Time	Sample Location	Record #	<i>E.coli</i> CFU/100 mL	Total Suspended Solids (mg/L)	Volatile Suspended Solids (mg/L)	Ammonia + Ammonium as N (mg/L)	Nitrate as N (mg/L)	Nitrite as N (mg/L)	o-Phosphate as P (mg/L)	Phosphorus Dissolved Total (mg/L)	Phosphorus Total (mg/L)	Caffeine (ug/L)
11/20/18	10:55:00	CC-7	581873	30	<2	<2	0.27	2.01	<0.05			0.217	
11/20/18	13:20:00	CC-9	581874	20000	7.8	2.2	0.10	3.14	<0.05			0.446	
11/20/18	14:10:00	CP-11	581865	1500	6.2	1.0	0.32	2.38	<0.05			0.280	
11/20/18	12:40:00	CP-18	581866	300	<2	<2	0.10	1.22	<0.05			0.113	
11/20/18	12:15:00	CP-7	581864	130	2.9	<0.8	0.03	0.70	<0.05			0.036	
12/05/18	12:00:00	AC-1	583446	110	6.9	<0.8	0.02	0.70	<0.05	<0.05		0.029	
12/05/18	11:25:00	AC-2	583447	10	15.0	1.2	0.02	0.55	<0.05	<0.05		0.030	
12/05/18	13:15:00	CC-3	583450	1070	<3	<3	<0.01	3.13	<0.05	0.12		0.126	
12/05/18	13:00:00	CC-5	583451	170	4.8	0.8	<0.01	2.59	<0.05	0.26		0.271	
12/05/18	10:45:00	CC-7	583452	840	<2	<2	0.12	2.34	<0.05	0.12		0.129	
12/05/18	13:25:00	CC-9	583453	17700	3.6	1.6	0.08	3.28	<0.05	0.39		0.416	
12/05/18	13:40:00	CP-11	583444	11400	7.9	<0.8	0.28	2.72	<0.05	0.26		0.282	
12/05/18	12:20:00	CP-18	583445	10	1.6	<0.8	0.05	1.21	<0.05	0.11		0.110	
12/05/18	12:05:00	CP-7	583443	50	4.9	2.0	0.02	1.24	<0.05	<0.05		0.053	
12/19/18	11:55:00	AC-1	583739	230	4.8	1.2	0.02	0.66	<0.05	<0.05		0.017	
12/19/18	11:05:00	AC-2	583740	<10	17.9	2.9	0.02	0.59	<0.05	<0.05		0.026	
12/19/18	12:40:00	CC-3	583743	1790	2.4	1.8	0.02	2.79	<0.05	0.19		0.192	
12/19/18	12:30:00	CC-5	583744	950	8.9	1.4	<0.01	2.60	<0.05	0.46		0.471	
12/19/18	10:25:00	CC-7	583745	2100	<2	<2	0.15	2.18	<0.05	0.15		0.159	
12/19/18	13:00:00	CC-9	583746	2000	12.6	2.6	0.03	2.83	<0.05	0.39		0.410	
12/19/18	13:20:00	CP-11	583737	100	3.6	1.4	0.22	2.44	<0.05	0.30		0.300	
12/19/18	12:10:00	CP-18	583738	<10	2.0	1.0	0.12	0.79	<0.05	0.12		0.114	
12/19/18	12:00:00	CP-7	583736	180	1.9	1.5	0.03	1.10	<0.05	<0.05		0.030	
1/02/19	11:50:00	AC-1	584553	190	10.7	1.7	0.02	0.75	<0.05	<0.05		0.028	
1/02/19	11:15:00	AC-2	584554	50	20.8	3.1	0.01	0.66	<0.05	<0.05		0.033	
1/02/19	12:35:00	CC-3	584557	1300	2.9	1.8	0.01	3.73	<0.05	0.13		0.129	
1/02/19	12:25:00	CC-5	584558	630	8.3	2.2	<0.01	2.37	<0.05	0.16		0.167	
1/02/19	10:40:00	CC-7	584559	9400	1.6	0.8	0.13	2.45	<0.05	0.07		0.090	
1/02/19	12:50:00	CC-9	584560	19900	10.1	2.0	0.11	3.54	0.06	0.32		0.347	
1/02/19	13:00:00	CP-11	584551	1900	3.7	1.7	0.17	3.05	<0.05	0.20		0.217	
1/02/19	12:05:00	CP-18	584552	60	5.6	1.8	0.05	1.27	<0.05	0.08		0.109	
1/02/19	11:55:00	CP-7	584550	140	8.8	2.2	0.03	1.46	<0.05	0.05		0.084	
1/18/19	11:45:00	AC-1	585575	170	2.6	1.8	0.03	0.81	<0.05	<0.05		0.014	

Sample Date	Sample Time	Sample Location	Record #	<i>E.coli</i> CFU/100 mL	Total Suspended Solids (mg/L)	Volatile Suspended Solids (mg/L)	Ammonia + Ammonium as N (mg/L)	Nitrate as N (mg/L)	Nitrite as N (mg/L)	o-Phosphate as P (mg/L)	Phosphorus Dissolved Total (mg/L)	Phosphorus Total (mg/L)	Caffeine (ug/L)
1/18/19	11:00:00	AC-2	585576	<10	8.6	1.2	0.01	0.74	<0.05	<0.05		0.013	
1/18/19	12:40:00	CC-3	585579	1890	<2	<2	0.06	2.96	<0.05	0.16		0.177	
1/18/19	12:25:00	CC-5	585580	850	87.2	11.6	0.04	2.51	<0.05	0.67		0.753	
1/18/19	10:10:00	CC-7	585581	11700									
1/18/19	12:50:00	CC-9	585582	1380	8.2	2.0	0.04	2.56	<0.05	0.45		0.500	
1/18/19	12:05:00	CP-18	585574	<10	1.8	1.0	0.18	0.84	<0.05	0.22		0.234	
1/18/19	11:50:00	CP-7	585573	20	3.0	1.0	0.02	1.30	<0.05	<0.05		0.033	
2/19/19	13:05:00	AC-1	587841	330	14.5	2.8	0.04	0.76	<0.1			0.028	
2/19/19	14:25:00	CC-3	587842	4100	3.0	2.1	0.11	3.30	<0.1			0.118	
2/19/19	14:15:00	CC-5	587843	1400	2.6	1.4	0.02	2.09	<0.1			0.302	
2/19/19	12:35:00	CC-7	587844	3500	<2	<2	0.26	1.80	<0.1			0.106	
2/19/19	14:40:00	CC-9	587845	12000	4.1	1.8	0.21	2.36	<0.1			0.398	
2/19/19	15:00:00	CP-11	587840	<10	2.9	1.4	0.14	2.42	<0.1			0.257	
2/19/19	13:20:00	CP-7	587839	2600	6.0	1.6	0.07	1.05	<0.1			0.044	
2/21/19	13:45:00	AC-2	588196	30	24.2	3.5	0.05	0.71	<0.1			0.042	
2/21/19	14:30:00	CP-18	588195	70	3.5	<0.8	0.12	0.94	<0.1			0.117	
3/01/19	11:55:00	AC-1	588360	140	15.8	2.2	0.03	0.79	<0.05			0.023	
3/01/19	11:25:00	AC-2	588361	20	16.2	1.4	0.02	0.71	<0.05			0.022	
3/01/19	14:35:00	CC-3	588364	200	4.2	1.6	0.04	3.19	<0.05			0.117	
3/01/19	14:20:00	CC-5	588365	180	3.6	1.4	0.01	2.21	<0.05			0.306	
3/01/19	12:05:00	CC-7	588366	7000	2.2	0.8	0.17	2.06	<0.05			0.094	
3/01/19	14:45:00	CC-9	588367	3400	7.6	2.8	0.20	2.40	0.09			0.384	
3/01/19	15:00:00	CP-11	588358	<10	6.4	2.4	0.11	2.39	<0.05			0.278	
3/01/19	12:20:00	CP-18	588359	40	<2	<2	0.07	0.81	<0.05			0.111	
3/01/19	12:05:00	CP-7	588357	80	20.8	2.8	0.04	0.98	<0.05			0.048	
3/08/19	11:30:00	AC-1	588462	460	4.8	1.2	0.03	0.80	<0.05			0.015	
3/08/19	11:05:00	AC-2	588463	10	5.2	1.2	0.02	0.74	<0.05			0.014	
3/08/19	12:55:00	CC-3	588466	600	5.6	1.4	0.02	3.02	<0.05			0.159	
3/08/19	12:45:00	CC-5	588467	210	5.8	1.6	0.01	2.10	<0.05			0.436	
3/08/19	10:20:00	CC-7	588468	39000	23.4	4.0	0.71	1.97	0.07			0.215	
3/08/19	13:10:00	CC-9	588469	200	6.8	1.8	0.14	2.25	0.07			0.442	
3/08/19	11:55:00	CP-18	588461	<10	<2	<2	0.14	0.80	<0.05			0.198	
3/08/19	11:40:00	CP-7	588460	380	8.8	2.0	0.05	1.00	<0.05			0.034	

Sample Date	Sample Time	Sample Location	Record #	<i>E.coli</i> CFU/100 mL	Total Suspended Solids (mg/L)	Volatile Suspended Solids (mg/L)	Ammonia + Ammonium as N (mg/L)	Nitrate as N (mg/L)	Nitrite as N (mg/L)	o-Phosphate as P (mg/L)	Phosphorus Dissolved Total (mg/L)	Phosphorus Total (mg/L)	Caffeine (ug/L)
3/13/19	11:45:00	AC-1	589723	180	25.7	2.8	0.04	0.68	<0.05			0.058	
3/13/19	11:15:00	AC-2	589724	220	26.4	2.2	0.07	0.70	<0.05			0.062	
3/13/19	12:35:00	CC-3	589727	1500	2.7	1.6	0.08	3.36	<0.05			0.099	
3/13/19	12:20:00	CC-5	589728	740	11.8	2.4	<0.01	1.80	<0.05			0.209	
3/13/19	10:35:00	CC-7	589729	190	20.9	2.4	0.18	0.92	<0.05			0.100	
3/13/19	12:50:00	CC-9	589730	7000	5.6	1.6	0.17	2.73	0.05			0.349	
3/13/19	13:05:00	CP-11	589721	3300	11.2	2.2	0.36	1.96	<0.05			0.252	
3/13/19	12:05:00	CP-18	589722	70	11.8	1.8	0.09	0.66	<0.05			0.109	
3/13/19	11:55:00	CP-7	589720	6400	3.2	1.0	0.08	1.81	<0.05			0.074	
3/15/19	14:45:00	AC-1	589878	380	712	44.0	0.12	0.58	<0.05			0.727	
3/27/19	11:55:00	AC-1	591749	60	8.4	1.8	0.01	0.64	<0.05			0.020	
3/27/19	11:15:00	AC-2	591750	<10	10.5	1.5	<0.01	0.59	<0.05			0.020	
3/27/19	13:15:00	CC-3	591753	670	24.7	5.2	0.02	3.29	<0.05	<0.05		0.084	
3/27/19	13:00:00	CC-5	591754	1160	22.2	4.9	0.08	1.59	<0.05	0.40		0.513	
3/27/19	10:30:00	CC-7	591755	930	2.6	2.1	0.02	1.79	<0.05	<0.05		0.062	
3/27/19	13:30:00	CC-9	591756	730	23.8	3.1	0.13	2.51	0.06	0.40		0.450	
3/27/19	13:45:00	CP-11	591747	<10	3.3	2.0	0.28	2.17	<0.05	0.22		0.280	
3/27/19	12:25:00	CP-18	591748	<10	<2	<2	0.06	0.46	<0.05			0.094	
3/27/19	12:15:00	CP-7	591746	20	2.0	1.3	0.02	0.43	<0.05			0.029	
4/15/19	12:45:00	AC-1	592603	310	244	14.0	0.02	0.72	<0.05			0.161	
4/15/19	12:10:00	AC-2	592604	150	320	17.0	0.02	0.62	<0.05			0.213	
4/15/19	14:20:00	CC-3	592607	990	4.6	1.6	0.01	3.35	<0.05	0.07		0.093	
4/15/19	13:55:00	CC-5	592608	1710	21.2	3.6	0.01	1.88	<0.05	0.10		0.153	
4/15/19	11:00:00	CC-7	592609	26100	15.5	2.0	0.06	1.86	<0.05	<0.05		0.083	
4/15/19	14:35:00	CC-9	592610	13500	9.4	2.4	0.16	3.44	0.07	0.20		0.247	
4/15/19	14:55:00	CP-11	592601	3700	18.6	2.6	0.19	2.43	<0.05	0.12		0.196	
4/15/19	13:20:00	CP-18	592602	310	65.7	7.3	0.03	1.03	<0.05			0.216	
4/15/19	13:00:00	CP-7	592600	240	83.4	5.8	0.02	0.81	<0.05			0.128	
4/24/19	11:50:00	AC-1	592784	20	9.4	1.2	0.01	0.61	<0.05			0.023	
4/24/19	11:15:00	AC-2	592785	10	13.2	1.3	<0.01	0.41	<0.05			0.024	
4/24/19	12:45:00	CC-5	592788	170	5.6	1.8	<0.01	2.25	<0.05	0.13		0.160	
4/24/19	10:35:00	CC-7	592789	3200	<2	<2	<0.01	1.82	<0.05	<0.05		0.053	
4/24/19	13:10:00	CC-9	592790	2800	7.0	1.8	0.15	3.22	0.06	0.31		0.370	

Sample Date	Sample Time	Sample Location	Record #	<i>E.coli</i> CFU/100 mL	Total Suspended Solids (mg/L)	Volatile Suspended Solids (mg/L)	Ammonia + Ammonium as N (mg/L)	Nitrate as N (mg/L)	Nitrite as N (mg/L)	o-Phosphate as P (mg/L)	Phosphorus Dissolved Total (mg/L)	Phosphorus Total (mg/L)	Caffeine (ug/L)
4/24/19	13:25:00	CP-11	592782	330	19.9	3.4	0.46	2.65	0.06	0.13		0.218	
4/24/19	12:25:00	CP-18	592783	20	<2	<2	0.09	0.78	<0.05			0.085	
4/24/19	12:05:00	CP-7	592781	210	11.0	2.5	0.02	0.62	<0.05			0.044	
5/01/19	8:40:00	CP-11.2	592932	180	26.0	6.2	0.09				0.012	0.112	
5/08/19	13:45:00	AC-1	593257	10	4.7	1.7	<0.01	0.38	<0.05			0.024	
5/08/19	11:25:00	AC-2	593258	10	9.7	<0.8	<0.01	0.32	<0.05			0.023	
5/08/19	13:30:00	CC-3	593261	120	<3	<3	<0.01	3.38	<0.05	0.06		0.070	
5/08/19	14:45:00	CC-5	593262	670	3.0	1.0	<0.01	1.74	<0.05	0.10		0.135	
5/08/19	12:30:00	CC-7	593263	4000	<3	<3	0.02	1.82	<0.05	<0.05		0.057	
5/08/19	13:15:00	CC-9	593264	1000	3.7	3.0	0.10	3.15	0.10	0.27		0.322	
5/08/19	15:05:00	CP-11	593255	920	13.3	3.3	0.24	1.49	<0.05	0.08		0.161	
5/08/19	14:20:00	CP-18	593256	80	<3	<3	0.05	0.31	<0.05			0.083	
5/08/19	14:00:00	CP-7	593254	10	9.0	3.0	0.01	0.61	<0.05			0.044	
5/10/19	12:25:00	AC-1	593547	220	142	10.8	0.01	0.42	<0.05			0.159	
5/15/19	8:32:00	CP-11.2	593680	340	12.0	5.0	<0.01				0.020	0.100	
5/22/19	12:35:00	AC-1	593895	140	2.0	1.1	0.01	0.43	<0.05			0.014	
5/22/19	11:55:00	AC-2	593896	80	6.1	1.6	0.02	0.29	<0.05			0.018	
5/22/19	13:50:00	CC-3	593899	1700	1.6	1.2	0.01	3.06	<0.05	0.13		0.151	
5/22/19	13:30:00	CC-5	593900	250	1.8	<0.8	<0.01	1.90	<0.05	0.19		0.225	
5/22/19	11:05:00	CC-7	593901	7000	2.6	1.6	<0.01	1.44	0.07	<0.05		0.041	
5/22/19	14:05:00	CC-9	593902	5100	4.8	1.9	0.11	3.03	0.10	0.41		0.474	
5/22/19	14:25:00	CP-11	593893	80	42.2	15.0	0.02	0.78	0.06	<0.05		0.214	
5/22/19	13:10:00	CP-18	593894	10	<2	<2	0.09	0.26	<0.05			0.155	
5/22/19	12:50:00	CP-7	593892	70	4.9	1.6	0.02	0.45	<0.05			0.039	
5/29/19	9:59:00	CP-11.2	594494	20	19.0	5.6	0.09				0.016	0.106	
6/05/19	12:00:00	AC-1	595200	200	4.0	0.8	0.02	0.55	<0.05			0.021	
6/05/19	11:25:00	AC-2	595201	90	<3	<3	<0.01	0.38	<0.05			0.016	
6/05/19	14:15:00	CC-3	595204	19000	136	32.1	0.28	0.66	<0.05	0.09		0.407	
6/05/19	13:55:00	CC-5	595205	78000	3660	337	0.51	1.48	0.05	0.22		3.66	
6/05/19	10:35:00	CC-7	595206	1120	<4	<4	0.05	1.92	0.08	0.06		0.084	
6/05/19	14:25:00	CC-9	595207	37000	231	37.8	0.53	0.44	<0.05	0.08		0.566	
6/05/19	14:45:00	CP-11	595198	13300	143	17.2	0.21	1.16	<0.05	0.12		0.422	
6/05/19	13:30:00	CP-18	595199	1800	47.6	8.1	0.24	0.39	<0.05			0.294	

Chedoke Creek Laboratory Data from RBG and HCA

Sample Date	Sample Time	Sample Location	Record #	<i>E.coli</i> CFU/100 mL	Total Suspended Solids (mg/L)	Volatile Suspended Solids (mg/L)	Ammonia + Ammonium as N (mg/L)	Nitrate as N (mg/L)	Nitrite as N (mg/L)	o-Phosphate as P (mg/L)	Phosphorus Dissolved Total (mg/L)	Phosphorus Total (mg/L)	Caffeine (ug/L)
6/05/19	13:15:00	CP-7	595197	110	10.0	3.3	0.04	0.56	<0.05			0.056	
6/12/19	7:57:00	CP-11.2	595444	390	20.9	5.9	0.15				0.039	0.126	
6/19/19	12:00:00	AC-1	595972	600	7.0	1.5	0.03	0.60	<0.05			0.026	
6/19/19	11:25:00	AC-2	595973	140	2.5	<0.8	0.01	0.42	<0.05			0.014	
6/19/19	15:00:00	CC-3	595976	640	8.0	3.0	0.01	2.15	<0.05	0.16		0.180	
6/19/19	14:40:00	CC-5	595977	1720	13.1	3.3	0.02	2.88	<0.05	0.38		0.447	
6/19/19	10:25:00	CC-7	595978	1260	22.3	3.0	0.10	1.95	0.09	0.10		0.151	
6/19/19	15:15:00	CC-9	595979	1100	4.8	1.8	0.03	2.70	0.07	0.43		0.457	
6/19/19	15:40:00	CP-11	595970	20	16.8	10.8	0.02	0.46	0.07	<0.05		0.216	
6/19/19	12:35:00	CP-18	595971	360	2.2	<0.8	0.15	0.44	<0.05			0.275	
6/19/19	12:15:00	CP-7	595969	180	4.0	1.6	0.04	0.62	<0.05			0.049	
6/26/19	9:02:00	CP-11.2	596487	2400	12.3	6.4	0.07				0.052	0.200	
7/03/19	12:15:00	AC-1	596939	5500	49.2	6.4	0.06	0.55	<0.05			0.095	
7/03/19	11:35:00	AC-2	596940	3500	70.8	8.4	0.05	0.42	<0.05			0.100	
7/03/19	14:20:00	CC-3	596943	60000	15.6	7.6	0.30	1.91	<0.05	0.29		0.370	
7/03/19	14:00:00	CC-5	596944	3700	8.4	2.8	0.03	2.04	<0.05	0.27		0.311	
7/03/19	10:40:00	CC-7	596945	12000	12.0	3.6	0.11	1.46	2.02	0.12		0.176	
7/03/19	15:20:00	CC-9	596946	4000	2.7	2.0	0.11	2.63	0.08	0.44		0.475	
7/03/19	15:00:00	CP-11	596937	1500	12.0	5.6	0.11	0.25	<0.05	<0.05		0.135	
7/03/19	13:35:00	CP-18	596938	50	3.6	2.0	0.20	0.43	<0.05			0.370	
7/03/19	12:30:00	CP-7	596936	1000	14.4	3.6	0.06	0.70	<0.05			0.075	
7/11/19	8:42:00	CP-11.2	597240	10	17.6	8.4	0.01				0.015	0.090	
7/17/19	12:00:00	AC-1	598422	6000	169	20.2	0.05	0.54	<0.05			0.236	
7/17/19	11:30:00	AC-2	598423	5100	156	14.4	0.02	0.45	<0.05			0.191	
7/17/19	13:55:00	CC-3	598426	32000	59.6	15.2	0.05	1.41	<0.05	0.21		0.319	
7/17/19	13:35:00	CC-5	598427	22000	79.6	13.3	0.02	1.45	<0.05	0.17		0.327	
7/17/19	10:20:00	CC-7	598428	90000	625	54.7	0.17	0.38	<0.05	0.11		0.850	
7/17/19	14:10:00	CC-9	598429	29000	8.2	1.8	0.04	1.32	<0.05	0.21		0.263	
7/17/19	14:30:00	CP-11	598420	1600	23.0	11.5	0.08	0.60	<0.05	<0.05		0.264	
7/17/19	12:35:00	CP-18	598421	2200	20.6	4.4	0.08	0.49	<0.05			0.213	
7/17/19	12:20:00	CP-7	598419	15000	41.9	7.1	0.06	0.62	<0.05			0.120	
7/26/19	8:41:00	CP-11.2	599073	100	29.8	11.0	<0.01				<0.010	0.141	
7/31/19	13:50:00	AC-1	599792	970	7.6	1.8	0.02	0.47	<0.05			0.052	

Chedoke Creek Laboratory Data from RBG and HCA

Sample Date	Sample Time	Sample Location	Record #	<i>E.coli</i> CFU/100 mL	Total Suspended Solids (mg/L)	Volatile Suspended Solids (mg/L)	Ammonia + Ammonium as N (mg/L)	Nitrate as N (mg/L)	Nitrite as N (mg/L)	o-Phosphate as P (mg/L)	Phosphorus Dissolved Total (mg/L)	Phosphorus Total (mg/L)	Caffeine (ug/L)
7/31/19	11:50:00	AC-2	599793	500	11.0	2.0	0.01	0.35	<0.05			0.039	
7/31/19	14:50:00	CC-3	599796	36000	8.7	4.2	0.28	2.38	0.27	0.41		0.447	
7/31/19	14:30:00	CC-5	599797	3800	64.2	6.0	0.02	1.76	<0.05	0.19		0.306	
7/31/19	11:00:00	CC-7	599798	3400	5.3	1.6	0.07	2.24	1.67	0.18		0.205	
7/31/19	15:10:00	CC-9	599799	2000	2.4	<0.8	0.02	2.60	<0.05	0.46		0.493	
7/31/19	15:20:00	CP-11	599790	900	23.4	10.6	<0.01	<0.05	<0.05	<0.05		0.137	
7/31/19	13:36:00	CP-18	599791	50	<2	<2	0.12	0.25	<0.05			0.286	
7/31/19	14:05:00	CP-7	599789	580	9.5	1.9	0.03	0.52	<0.05			0.081	
8/07/19	9:38:00	CP-11.2	599994	480	13.2	8.4	0.02				0.013	0.156	
8/15/19	13:40:00	AC-1	600893	820	3.9	1.8	0.02	0.53	<0.05			0.022	
8/15/19	12:10:00	AC-2	600894	340	<2	<2	<0.01	0.41	<0.05			<0.010	
8/15/19	14:55:00	CC-3	600897	8800	14.1	5.1	0.18	2.22	<0.05	0.41		0.439	
8/15/19	14:40:00	CC-5	600898	1390	7.0	2.3	0.02	2.56	<0.05	0.40		0.428	
8/15/19	11:10:00	CC-7	600899	5700	13.3	1.9	0.02	1.78	<0.05	0.13		0.166	
8/15/19	15:15:00	CC-9	600900	2400	4.0	1.5	<0.01	2.69	<0.05	0.50		0.541	
8/15/19	15:30:00	CP-11	600891	200	27.7	17.1	0.01	0.06	<0.05	<0.05		0.210	
8/15/19	14:10:00	CP-18	600892	30	<2	<2	0.20	0.37	<0.05			0.434	
8/15/19	13:50:00	CP-7	600890	600	6.1	2.9	0.03	0.59	<0.05			0.054	
8/22/19	8:44:00	CP-11.2	602276	1000	27.3	10.4	0.18				0.020	0.186	
8/28/19	12:00:00	AC-1	602506	1500	8.1	2.1	0.02	0.52	<0.05			0.040	
8/28/19	11:15:00	AC-2	602507	1700	15.6	3.4	0.01	0.42	<0.05			0.036	
8/28/19	14:35:00	CC-3	602510	42000	6.3	3.5	0.15	2.02	<0.05	0.37		0.417	
8/28/19	14:15:00	CC-5	602511	1000	9.3	2.8	<0.01	1.94	<0.05	0.31		0.347	
8/28/19	10:15:00	CC-7	602512	2100	<3	<3	<0.01	1.06	<0.05	0.12		0.151	
8/28/19	14:55:00	CC-9	602513	1700	<3	<3	<0.01	2.64	<0.05	0.47		0.505	
8/28/19	15:10:00	CP-11	602504	8500	19.0	8.3	0.15	0.97	<0.05	0.14		0.284	
8/28/19	13:30:00	CP-18	602505	90	5.8	2.7	0.07	0.22	<0.05			0.230	
8/28/19	13:50:00	CP-7	602503	1600	9.5	2.4	0.04	0.54	<0.05			0.093	
9/04/19	8:56:00	CP-11.2	602674	20	34.7	11.0	0.08				0.021	0.189	
9/12/19	14:10:00	AC-1	603221	10000	580	58.9	0.06	0.52	<0.05			0.564	
9/13/19	12:00:00	AC-1	603550	1290	11.9	2.5	0.03	0.43	0.09			0.056	
9/13/19	11:30:00	AC-2	603551	1030	11.0	1.9	0.02	0.37	<0.05			0.032	
9/13/19	13:15:00	CC-3	603554	23000	8.2	4.0	0.06	2.24	<0.05	0.36		0.360	

Sample Date	Sample Time	Sample Location	Record #	<i>E.coli</i> CFU/100 mL	Total Suspended Solids (mg/L)	Volatile Suspended Solids (mg/L)	Ammonia + Ammonium as N (mg/L)	Nitrate as N (mg/L)	Nitrite as N (mg/L)	o-Phosphate as P (mg/L)	Phosphorus Dissolved Total (mg/L)	Phosphorus Total (mg/L)	Caffeine (ug/L)
9/13/19	12:55:00	CC-5	603555	1800	7.8	2.0	0.01	1.75	<0.05	0.24		0.236	
9/13/19	10:30:00	CC-7	603556	2500	<2	<2	0.03	1.75	<0.05	0.14		0.144	
9/13/19	13:30:00	CC-9	603557	5800	2.2	1.5	0.02	2.90	0.09	0.46		0.464	
9/13/19	13:45:00	CP-11	603548	8000	30.8	6.8	0.44	1.12	<0.05	0.23		0.252	
9/13/19	12:30:00	CP-18	603549	10	<2	<2	0.08	0.27	<0.05			0.237	
9/13/19	12:15:00	CP-7	603547	1600	16.8	2.8	0.03	0.50	<0.05			0.072	
9/18/19	9:01:00	CP-11.2	603668	50	30.2	12.6	0.02				0.016	0.169	
9/26/19	11:55:00	AC-1	603943	730	4.3	2.3	0.02	0.46	<0.05			0.033	
9/26/19	11:15:00	AC-2	603944	400	<3	<3	0.02	0.31	<0.05			0.021	
9/26/19	13:25:00	CC-3	603947	11000	7.3	3.7	0.07	2.78	<0.05	0.42		0.469	
9/26/19	13:00:00	CC-5	603948	2100	16.7	4.8	0.02	3.45	<0.05	0.52		0.606	
9/26/19	10:30:00	CC-7	603949	43000	10.3	3.8	0.60	1.32	0.18	0.29		0.380	
9/26/19	13:40:00	CC-9	603950	10800	5.7	2.7	0.02	3.35	0.16	0.44		0.547	
9/26/19	14:00:00	CP-11	603941	440	20.0	5.4	0.78	1.84	0.06	0.20		0.357	
9/26/19	12:35:00	CP-18	603942	10	<2	<2	0.11	0.42	0.12			0.267	
9/26/19	12:05:00	CP-7	603940	800	13.0	2.6	0.03	0.51	<0.05			0.084	
10/09/19	11:35:00	AC-1	604536	310	3.3	1.2	0.04	0.52	<0.05			0.091	
10/09/19	10:55:00	AC-2	604537	110	<2	<2	0.01	0.41	<0.05			0.018	
10/09/19	12:45:00	CC-3	604540	35000	7.3	3.2	0.15	2.45	<0.05	0.46		0.479	
10/09/19	12:25:00	CC-5	604541	970	14.3	4.0	0.02	2.93	0.29	0.44		0.457	
10/09/19	10:10:00	CC-7	604542	3400	3.0	1.4	0.05	2.07	4.09	0.17		0.186	
10/09/19	13:00:00	CC-9	604543	1600	8.7	2.0	0.09	3.07	0.06	0.61		0.606	
10/09/19	13:15:00	CP-11	604534	780	17.4	3.6	0.59	2.02	0.07	0.21		0.363	
10/09/19	12:00:00	CP-18	604535	10	<2	<2	0.12	0.32	<0.05			0.387	
10/09/19	11:45:00	CP-7	604533	200	9.8	3.2	0.04	0.38	<0.05			0.068	
10/17/19	13:55:00	AC-1	604696	3400	217	20.2	0.01	0.52	0.05			0.264	
10/23/19	11:50:00	AC-1	605271	350	4.0	2.0	<0.01	0.37	<0.05			0.039	
10/23/19	11:15:00	AC-2	605272	320	4.2	2.5	<0.01	0.23	<0.05			0.029	
10/23/19	13:15:00	CC-3	605275	740	5.6	2.8	<0.01	2.07	<0.05	0.39		0.409	
10/23/19	12:40:00	CC-5	605276	930	7.4	1.6	0.02	1.75	<0.05	0.27		0.284	
10/23/19	10:35:00	CC-7	605277	4100	<3	<3	0.04	1.34	0.08	0.19		0.214	
10/23/19	13:35:00	CC-9	605278	3500	4.1	2.4	0.01	2.75	<0.05	0.52		0.523	
10/23/19	14:00:00	CP-11	605269	8200	28.3	5.4	0.39	1.32	<0.05	0.25		0.350	

Sample Date	Sample Time	Sample Location	Record #	<i>E.coli</i> CFU/100 mL	Total Suspended Solids (mg/L)	Volatile Suspended Solids (mg/L)	Ammonia + Ammonium as N (mg/L)	Nitrate as N (mg/L)	Nitrite as N (mg/L)	o-Phosphate as P (mg/L)	Phosphorus Dissolved Total (mg/L)	Phosphorus Total (mg/L)	Caffeine (ug/L)
10/23/19	12:10:00	CP-18	605270	40	<3	<3	0.06	0.29	<0.05			0.205	
10/23/19	12:00:00	CP-7	605268	370	7.4	3.9	0.07	0.36	<0.05			0.055	
11/01/19	13:05:00	AC-1	605844	870	203	19.5	0.06	0.46	<0.1			0.252	
11/06/19	11:35:00	AC-1	606258	40	3.7	1.6	0.02	0.63	<0.05			0.033	
11/06/19	10:55:00	AC-2	606259	100	4.0	1.4	0.01	0.43	<0.05			0.023	
11/06/19	13:30:00	CC-3	606262	560	3.4	2.1	<0.01	3.12	<0.05	0.38		0.414	
11/06/19	13:15:00	CC-5	606263	1700	3.6	1.9	<0.01	2.35	<0.05	0.24		0.260	
11/06/19	10:00:00	CC-7	606264	3500	<2	<2	0.10	2.00	0.06	0.12		0.154	
11/06/19	13:45:00	CC-9	606265	740	4.0	2.0	0.49	3.42	0.17	0.62		0.665	
11/06/19	14:00:00	CP-11	606256	690	8.5	2.0	0.46	2.73	0.09	0.32		0.389	
11/06/19	12:50:00	CP-18	606257	<10	<2	<2	0.10	0.52	<0.05			0.178	
11/06/19	11:50:00	CP-7	606255	50	5.2	1.2	0.03	0.62	<0.05			0.078	
11/20/19	12:10:00	AC-1	607626	160	5.1	1.3	<0.01	0.62	<0.05			0.024	
11/20/19	11:40:00	AC-2	607627	90	5.1	1.1	<0.01	0.43	<0.05			0.014	
11/20/19	13:25:00	CC-3	607630	4100	3.1	1.3	<0.01	2.88	<0.05	0.27		0.286	
11/20/19	13:05:00	CC-5	607631	920	9.1	1.8	<0.01	2.25	<0.05	0.19		0.220	
11/20/19	10:50:00	CC-7	607632	1700	<2	<2	0.14	1.68	0.05	0.10		0.113	
11/20/19	13:40:00	CC-9	607633	40000	13.1	3.3	0.10	2.71	0.15	0.35		0.387	
11/20/19	14:00:00	CP-11	607624	4700	6.4	2.0	0.16	2.39	0.05	0.25		0.275	
11/20/19	12:40:00	CP-18	607625	20	2.4	1.8	0.04	0.73	<0.05			0.106	
11/20/19	12:20:00	CP-7	607623	70	2.9	1.1	0.02	0.82	<0.05			0.034	
12/04/19	11:40:00	AC-1	608465	150	4.8	2.2	0.03	0.64	<0.05			0.021	
12/04/19	12:40:00	AC-2	608466	190	4.8	1.9	<0.01	0.48	<0.05			0.013	
12/04/19	12:45:00	AC-3	608467	60	5.3	2.3	<0.01	0.77	<0.05			0.028	
12/04/19	13:30:00	CC-3	608469	2600	48.2	7.9	0.01	3.01	<0.05	0.25		0.315	
12/04/19	13:15:00	CC-5	608470	3500	17.1	4.5	<0.01	2.35	<0.05	0.17		0.222	
12/04/19	11:05:00	CC-7	608471	5000	7.3	2.7	0.26	1.74	0.06	0.11		0.135	
12/04/19	13:50:00	CC-9	608472	27000	22.3	5.8	0.23	2.63	0.09	0.34		0.404	
12/04/19	14:05:00	CP-11	608463	4500	13.2	3	0.2	2.55	<0.05	0.2		0.261	
12/04/19	12:00:00	CP-18	608464	10	<3	<3	0.08	0.69	<0.05			0.115	
12/04/19	11:50:00	CP-7	608462	140	5.7	2.7	0.02	1.03	<0.05			0.035	
12/18/19	11:35:00	AC-1	609115	80	3.1	<0.8	0.02	0.72	<0.05			0.024	
12/18/19	11:05:00	AC-2	609116	30	6.8	0.9	0.01	0.56	<0.05			0.023	

Sample Date	Sample Time	Sample Location	Record #	<i>E.coli</i> CFU/100 mL	Total Suspended Solids (mg/L)	Volatile Suspended Solids (mg/L)	Ammonia + Ammonium as N (mg/L)	Nitrate as N (mg/L)	Nitrite as N (mg/L)	o-Phosphate as P (mg/L)	Phosphorus Dissolved Total (mg/L)	Phosphorus Total (mg/L)	Caffeine (ug/L)
12/18/19	11:10:00	AC-3	609117	80	4.4	<0.8	<0.01	0.88	<0.05			0.028	
12/18/19	14:50:00	CC-3	609119	32700	5.1	2.4	0.04	3.26	<0.05	0.27		0.303	
12/18/19	14:35:00	CC-5	609120	620	8.2	1.1	<0.01	2.5	<0.05	0.18		0.205	
12/18/19	10:20:00	CC-7	609121	1040	1.8	0.9	0.18	1.88	<0.05	0.11		0.118	
12/18/19	15:05:00	CC-9	609122	10300	3.5	1.1	0.06	3.12	<0.05	0.38		0.431	
12/18/19	15:25:00	CP-11	609113	370	3.2	<0.8	0.4	2.58	<0.05	0.18		0.249	
12/18/19	14:00:00	CP-18	609114	<10	<2	<2	0.14	0.74	<0.05			0.187	
12/18/19	14:15:00	CP-7	609112	40	3.2	1.2	0.02	1.05	<0.05			0.037	
1/08/20	12:05:00	AC-1	610518	190	5.6	2.8	0.02	0.81	<0.05			0.023	
1/08/20	11:30:00	AC-2	610519	240	8.8	2.8	0.01	0.61	<0.05			0.026	
1/08/20	11:35:00	AC-3	610520	330	<3	<3	0.01	1.02	<0.05			0.025	
1/08/20	13:40:00	CC-3	610522	8800	4.8	2.8	0.05	3.05	<0.05	0.28		0.301	
1/08/20	13:25:00	CC-5	610523	790	24.2	2.8	<0.01	2.47	<0.05	0.2		0.261	
1/08/20	10:40:00	CC-7	610524	1700	3.6	3.2	0.13	1.71	<0.05	0.12		0.132	
1/08/20	13:50:00	CC-9	610525	110000	8.4	5.6	0.12	3.01	0.06	0.4		0.451	
1/08/20	14:05:00	CP-11	610516	730	6.4	3.2	0.3	2.49	<0.05	0.26		0.28	
1/08/20	13:05:00	CP-18	610517	10	<3	<3	0.13	0.84	<0.05			0.184	
1/08/20	12:15:00	CP-7	610515	70	<3	<3	0.01	1.26	<0.05			0.037	
1/22/20	12:20:00	AC-1	611019	200	18	3.2	0.03	0.98	<0.05			0.042	
1/22/20	11:45:00	AC-2	611020	20	29.6	5.6	0.03	0.77	<0.05			0.041	
1/22/20	11:50:00	AC-3	611021	100	13.2	3.6	0.01	1.24	<0.05			0.037	
1/22/20	13:25:00	CC-3	611023	1600	4.8	1.8	0.01	3.12	<0.05	0.29		0.296	
1/22/20	13:10:00	CC-5	611024	100	13.5	2.6	<0.01	2.34	<0.05	0.19		0.228	
1/22/20	11:00:00	CC-7	611025	9100	4.6	2	0.79	2.08	0.07	0.16		0.186	
1/22/20	13:40:00	CC-9	611026	7000	5.6	1.8	0.06	2.96	<0.05	0.42		0.425	
1/22/20	12:45:00	CP-18	611018	100	8	4	0.02	1.35	<0.05			0.044	

Sample Date	Sample Time	Sample Location	Record #	Escherichia coli (CFU/100 mL)	Dissolved Oxygen-Field (mg/L)	Temperature - Field (C)	Phosphorus Dissolved Total (mg/L)	Phosphorus Total (mg/L)	Total Suspended Solids (mg/L)	Ammonia + Ammonium as N (mg/L)	Boron (mg/L)	Fluoride (mg/L)	Caffeine (ug/L)
7/31/18	11:10	CHEDOKE CREEK GLEN RD OUTFALL HE09OF01	574548	930									
7/31/18	11:25	CHEDOKE CREEK KAY DRAGE PARK BRIDGE	574550	680									
7/31/18	11:35	CHEDOKE CREEK PRINCESS POINT BRIDGE	574549	160									
8/01/18	11:00	CHEDOKE CREEK GLEN RD OUTFALL HE09OF01	574569	3100	9.96	19.4							
8/01/18	11:15	CHEDOKE CREEK KAY DRAGE PARK BRIDGE	574573	2200	9.51	22.7							
8/01/18	11:15	CHEDOKE CREEK KAY DRAGE PARK BRIDGE	574574		9.66	22.6							
8/01/18	11:35	CHEDOKE CREEK PRINCESS POINT BRIDGE	574571	1200	6.61	24.1							
8/01/18	11:35	CHEDOKE CREEK PRINCESS POINT BRIDGE	574572		5.60	24.0							
8/02/18	11:00	CHEDOKE CREEK GLEN RD OUTFALL HE09OF01	574612	1570	11.03	19.9							
8/02/18	11:30	CHEDOKE CREEK KAY DRAGE PARK BRIDGE	574614	850	5.80	22.5							
8/02/18	11:35	CHEDOKE CREEK PRINCESS POINT BRIDGE	574613	13400	6.06	23.8							
8/03/18	11:10	CHEDOKE CREEK GLEN RD OUTFALL HE09OF01	574652	560	10.9	19.3							
8/03/18	11:25	CHEDOKE CREEK KAY DRAGE PARK BRIDGE	574654	280	5.25	21.7							
8/03/18	11:40	CHEDOKE CREEK PRINCESS POINT BRIDGE	574653	80	3.62	23.6							
8/03/18		CHEDOKE CREEK PRINCESS POINT BRIDGE	574659		6.55	24.2							
8/04/18	07:35	CHEDOKE CREEK GLEN RD OUTFALL HE09OF01	574660	1440	8.37	18.7							
8/04/18	07:50	CHEDOKE CREEK KAY DRAGE PARK BRIDGE	574662	400	3.78	22.6							
8/04/18	08:05	CHEDOKE CREEK PRINCESS POINT BRIDGE	574661	340	2.76	23.4							
8/05/18	10:45	CHEDOKE CREEK GLEN RD OUTFALL HE09OF01	574663	1140	11.4	25.4							
8/05/18	11:00	CHEDOKE CREEK KAY DRAGE PARK BRIDGE	574665	150	5.18	23.9							
8/05/18	11:25	CHEDOKE CREEK PRINCESS POINT BRIDGE	574664	110	2.11	25.2							
8/06/18	10:20	CHEDOKE CREEK GLEN RD OUTFALL HE09OF01	574666	880	10.53	21.4							
8/06/18	10:35	CHEDOKE CREEK KAY DRAGE PARK BRIDGE	574668	300	3.63	24.3							
8/06/18	10:50	CHEDOKE CREEK PRINCESS POINT BRIDGE	574667	70	2.58	26.4							
8/07/18	10:55	CHEDOKE CREEK GLEN RD OUTFALL HE09OF01	574711	20000	9.46	21.7							
8/07/18	11:10	CHEDOKE CREEK KAY DRAGE PARK BRIDGE	574713	31000	7.08	21.1							
8/07/18	11:25	CHEDOKE CREEK PRINCESS POINT BRIDGE	574712	12600	7.18	21.3							
8/08/18	11:40	CHEDOKE CREEK GLEN RD OUTFALL HE09OF01	574936	34000	9.03	21.3							
8/08/18	11:55	CHEDOKE CREEK KAY DRAGE PARK BRIDGE	574938	33000	7.82	21.6							
8/08/18	12:02	CHEDOKE CREEK PRINCESS POINT BRIDGE	574937	21600	6.83	21.7							
8/09/18	09:35	CHEDOKE CREEK GLEN RD OUTFALL HE09OF01	574939	3000	10.51	20							
8/09/18	09:58	CHEDOKE CREEK KAY DRAGE PARK BRIDGE	574941	15300	4.85	21.5							
8/09/18	10:15	CHEDOKE CREEK PRINCESS POINT BRIDGE	574940	33000	3.04	23.8							
8/10/18	09:50	CHEDOKE CREEK GLEN RD OUTFALL HE09OF01	574942	1380	9.39	19.7							
8/10/18	10:20	CHEDOKE CREEK KAY DRAGE PARK BRIDGE	574944	1000	2.67	23.6							
8/10/18	10:40	CHEDOKE CREEK PRINCESS POINT BRIDGE	574943	1540	0.82	24.2							
8/10/18	12:50	STORM SEWER OUTFALL HE10OF03 HCA CC-3	575036	1940	8.78	19.1							
8/11/18	10:18	CHEDOKE CREEK GLEN RD OUTFALL HE09OF01	574945	750	10.63	19.3							
8/11/18	10:40	CHEDOKE CREEK KAY DRAGE PARK BRIDGE	574947	290	3.30	21.3							
8/11/18	11:00	CHEDOKE CREEK PRINCESS POINT BRIDGE	574946	180	1.28	23.9							
8/11/18	09:54	STORM SEWER OUTFALL HE10OF03 HCA CC-3	575042	930	9.12	17.6							
8/12/18	09:41	CHEDOKE CREEK GLEN RD OUTFALL HE09OF01	574948	650	10.28	18.8							
8/12/18	10:00	CHEDOKE CREEK KAY DRAGE PARK BRIDGE	574950	160	3.23	23.0							
8/12/18	10:17	CHEDOKE CREEK PRINCESS POINT BRIDGE	574949	20	1.41	24.1							
8/12/18	09:22	STORM SEWER OUTFALL HE10OF03 HCA CC-3	575043	920	9.05	18.2							

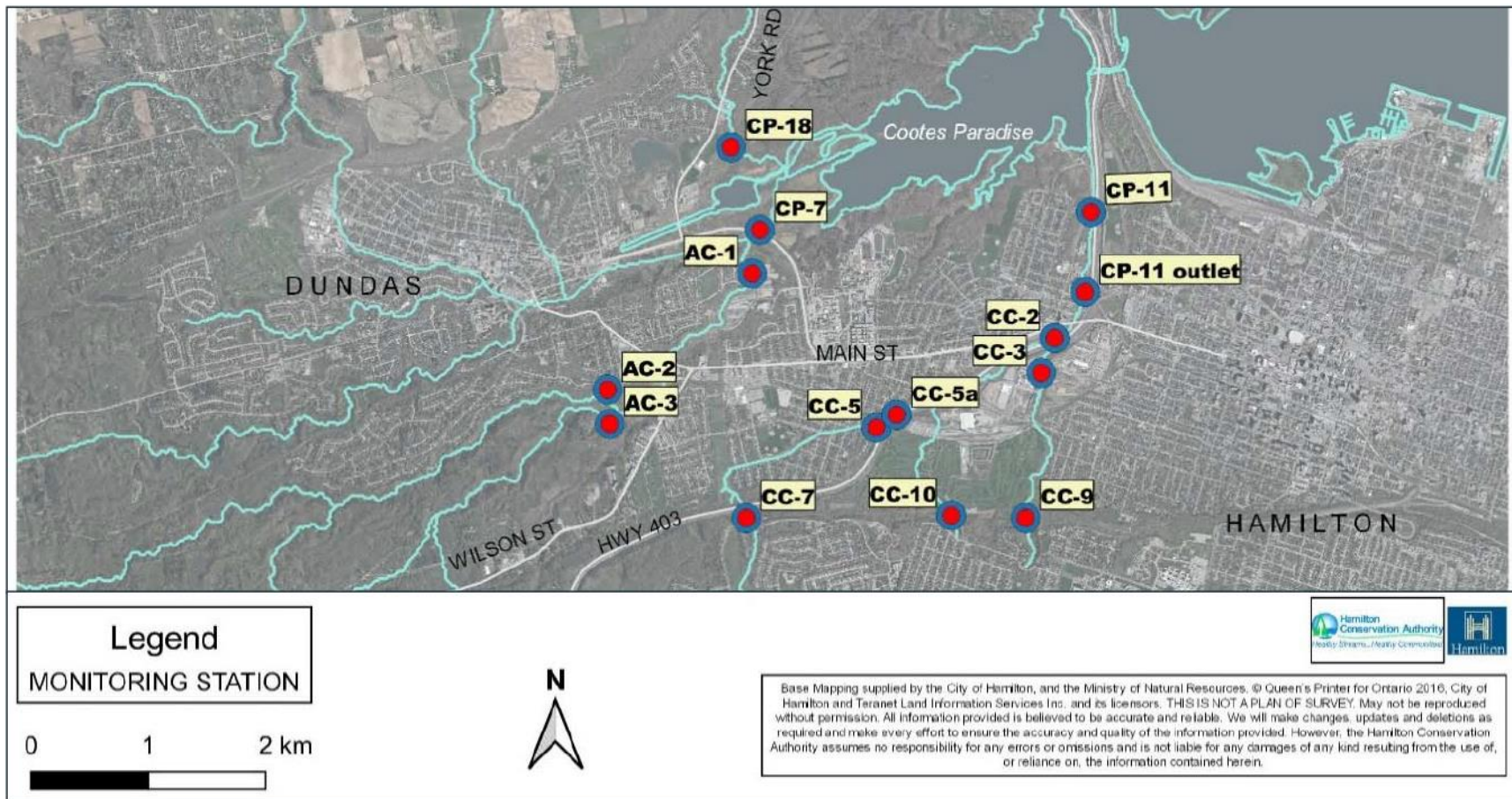
Sample Date	Sample Time	Sample Location	Record #	Escherichia coli (CFU/100 mL)	Dissolved Oxygen-Field (mg/L)	Temperature - Field (C)	Phosphorus Total (mg/L)	Phosphorus Total (mg/L)	Total Suspended Solids (mg/L)	Ammonia + Ammonium as N (mg/L)	Boron (mg/L)	Fluoride (mg/L)	Caffeine (ug/L)
8/13/18	10:25	CHEDOKE CREEK GLEN RD OUTFALL HE09OF01	574951	430	10.64	19.3							
8/13/18	10:45	CHEDOKE CREEK KAY DRAGE PARK BRIDGE	574953	120	3.82	24.9							
8/13/18	11:00	CHEDOKE CREEK PRINCESS POINT BRIDGE	574952	80	1.59	25.2							
8/13/18	10:00	STORM SEWER OUTFALL HE10OF03 HCA CC-3	575044	1500	9.09	18.2							
8/14/18	11:25	CHEDOKE CREEK GLEN RD OUTFALL HE09OF01	574954	960	10.80	20.6							
8/14/18	11:45	CHEDOKE CREEK KAY DRAGE PARK BRIDGE	574956	60	9.10	22.7							
8/14/18	12:15	CHEDOKE CREEK PRINCESS POINT BRIDGE	574955	400	2.43	24.9							
8/14/18	11:02	STORM SEWER OUTFALL HE10OF03 HCA CC-3	575045	14300	8.87	18.7							
8/15/18	09:50	CHEDOKE CREEK GLEN RD OUTFALL HE09OF01	575370	920	10.73	20.3							
8/15/18	10:05	CHEDOKE CREEK KAY DRAGE PARK BRIDGE	575372	270	6.39	23.0							
8/15/18	10:20	CHEDOKE CREEK PRINCESS POINT BRIDGE	575371	200	1.95	25.4							
8/15/18	09:33	STORM SEWER OUTFALL HE10OF03 HCA CC-3	575373	4800	8.84	18.8							
8/16/18	11:20	CHEDOKE CREEK GLEN RD OUTFALL HE09OF01	575374	1300	11.12	22.1							
8/16/18	11:37	CHEDOKE CREEK KAY DRAGE PARK BRIDGE	575376	100	6.06	25.5							
8/16/18	12:00	CHEDOKE CREEK PRINCESS POINT BRIDGE	575375	3600	3.47	26.3							
8/16/18	10:43	STORM SEWER OUTFALL HE10OF03 HCA CC-3	575377	3500	8.86	19.2							
8/17/18	10:57	CHEDOKE CREEK GLEN RD OUTFALL HE09OF01	575378	71000	9.91	21.2							
8/17/18	11:10	CHEDOKE CREEK KAY DRAGE PARK BRIDGE	575380	20000	3.20	23.0							
8/17/18	11:24	CHEDOKE CREEK PRINCESS POINT BRIDGE	575379	31000	0.43	23.5							
8/17/18	10:40	STORM SEWER OUTFALL HE10OF03 HCA CC-3	575381	3900	8.74	19.6							
8/18/18	09:45	CHEDOKE CREEK GLEN RD OUTFALL HE09OF01	575382	9000	9.67	20.5							
8/18/18	10:00	CHEDOKE CREEK KAY DRAGE PARK BRIDGE	575384	24000	6.27	20.9							
8/18/18	10:20	CHEDOKE CREEK PRINCESS POINT BRIDGE	575383	14000	6.82	21.4							
8/18/18	09:20	STORM SEWER OUTFALL HE10OF03 HCA CC-3	575385	9500	8.79	19.2							
8/19/18	09:40	CHEDOKE CREEK GLEN RD OUTFALL HE09OF01	575386	1300	10.56	19.3							
8/19/18	09:55	CHEDOKE CREEK KAY DRAGE PARK BRIDGE	575388	4000	4.57	20.9							
8/19/18	10:15	CHEDOKE CREEK PRINCESS POINT BRIDGE	575387	5800	2.55	22.3							
8/19/18	09:20	STORM SEWER OUTFALL HE10OF03 HCA CC-3	575389	4800	9.00	18.4							
8/20/18	10:40	CHEDOKE CREEK GLEN RD OUTFALL HE09OF01	575390	750	10.69	19.8							
8/20/18	11:13	CHEDOKE CREEK KAY DRAGE PARK BRIDGE	575392	460	3.31	23.4							
8/20/18	11:28	CHEDOKE CREEK PRINCESS POINT BRIDGE	575391	300	1.87	23.1							
8/20/18	10:22	STORM SEWER OUTFALL HE10OF03 HCA CC-3	575393	1000	9.06	18.6							
8/21/18	12:16	CHEDOKE CREEK GLEN RD OUTFALL HE09OF01	575394	60000	8.89	20.8							
8/21/18	12:51	CHEDOKE CREEK KAY DRAGE PARK BRIDGE	575396	43000	8.28	21.4							
8/21/18	13:06	CHEDOKE CREEK PRINCESS POINT BRIDGE	575395	48000	8.04	21.4							
8/22/18	11:09	CHEDOKE CREEK GLEN RD OUTFALL HE09OF01	575875	7100	9.81	19.6							
8/22/18	11:31	CHEDOKE CREEK KAY DRAGE PARK BRIDGE	575877	29000	7.84	19.9							
8/22/18	11:50	CHEDOKE CREEK PRINCESS POINT BRIDGE	575876	7600	4.84	21.6							
8/23/18	08:16	CHEDOKE CREEK GLEN RD OUTFALL HE09OF01	575926	1600	9.71	16.8							
8/23/18	08:32	CHEDOKE CREEK KAY DRAGE PARK BRIDGE	575928	9700	6.35	17.7							
8/23/18	08:47	CHEDOKE CREEK PRINCESS POINT BRIDGE	575927	6600	4.41	19.8							
8/24/18	11:04	CHEDOKE CREEK GLEN RD OUTFALL HE09OF01	575963	860	10.58	20.2							
8/24/18	11:19	CHEDOKE CREEK KAY DRAGE PARK BRIDGE	575965	1050	5.86	20.9							
8/24/18	11:37	CHEDOKE CREEK PRINCESS POINT BRIDGE	575964	970	2.46	22.3							
8/24/18	10:20	S4 EAST CHANNEL KING ST ON RAMP 403 BRANT W	575967	4000	8.50	18.1							

Sample Date	Sample Time	Sample Location	Record #	Escherichia coli (CFU/100 mL)	Dissolved Oxygen-Field (mg/L)	Temperature - Field (C)	Phosphorus Dissolved Total (mg/L)	Phosphorus Total (mg/L)	Total Suspended Solids (mg/L)	Ammonia + Ammonium as N (mg/L)	Boron (mg/L)	Fluoride (mg/L)	Caffeine (ug/L)
8/24/18	10:38	S4 SOUTH CHANNEL KING ST ON RAMP 403 BRANT W	575966	490	12.93	20.9							
8/29/18	14:07	CHEDOKE CREEK GLEN RD OUTFALL HE09OF01	576000	720	10.15	23.6							
8/29/18	13:50	CHEDOKE CREEK KAY DRAGE PARK BRIDGE	576002	900	5.20	25.6							
8/29/18	14:26	CHEDOKE CREEK PRINCESS POINT BRIDGE	576001	450	8.87	27.5							
8/29/18	11:50	MCMMASTER CSO OUTFALL HB11OF01	576056	80									
8/29/18	12:22	S4 EAST CHANNEL KING ST ON RAMP 403 BRANT W	576005	1800	8.05	21.3							
8/29/18	12:28	S4 SOUTH CHANNEL KING ST ON RAMP 403 BRANT W	576004	500	12.31	23.6							
8/29/18	12:53	STORM SEWER OUTFALL HE10OF03 HCA CC-3	576003	101000	8.55	20.0							
9/06/18	12:30	CHEDOKE CREEK GLEN RD OUTFALL HE09OF01	576202	1400	10.34	21.1							
9/06/18	12:47	CHEDOKE CREEK KAY DRAGE PARK BRIDGE	576204	1160	4.61	24.4							
9/06/18	13:00	CHEDOKE CREEK PRINCESS POINT BRIDGE	576203	1400	3.16	25.0							
9/06/18	11:30	S4 EAST CHANNEL KING ST ON RAMP 403 BRANT W	576207	2300	8.02	20.2							
9/06/18	11:40	S4 SOUTH CHANNEL KING ST ON RAMP 403 BRANT W	576206	1100	11.19	21.1							
9/06/18	12:10	STORM SEWER OUTFALL HE10OF03 HCA CC-3	576205	2400	8.97	19.6							
9/12/18	11:36	CHEDOKE CREEK GLEN RD OUTFALL HE09OF01	576665	3200	11.19	17.3							
9/12/18	12:09	CHEDOKE CREEK KAY DRAGE PARK BRIDGE	576667	2400	6.48	17.4							
9/12/18	12:34	CHEDOKE CREEK PRINCESS POINT BRIDGE	576666	5100	4.2	17.7							
9/12/18	11:15	S4 EAST CHANNEL KING ST ON RAMP 403 BRANT W	576670	1700	9.6	16.3							
9/12/18	10:41	S4 SOUTH CHANNEL KING ST ON RAMP 403 BRANT W	576669	660	9.46	16.0							
9/12/18	10:41	STORM SEWER OUTFALL HE10OF03 HCA CC-3	576668	7400	12.05	16.9							
9/19/18	11:30	CHEDOKE CREEK GLEN RD OUTFALL HE09OF01	577325	1900	11.15	19.0							
9/19/18	11:57	CHEDOKE CREEK KAY DRAGE PARK BRIDGE	577327	570	5.91	19.7							
9/19/18	12:28	CHEDOKE CREEK PRINCESS POINT BRIDGE	577326	100	6.97	22.8							
9/19/18	10:37	S4 EAST CHANNEL KING ST ON RAMP 403 BRANT W	577330	5300	9.09	17.1							
9/19/18	10:37	S4 SOUTH CHANNEL KING ST ON RAMP 403 BRANT W	577329	370	13.21	19.1							
9/19/18	11:04	STORM SEWER OUTFALL HE10OF03 HCA CC-3	577328	4700	9.48	17.3							
9/28/18	12:15	CHEDOKE CREEK GLEN RD OUTFALL HE09OF01	578034	590	11.12	17.4							
9/28/18	12:30	CHEDOKE CREEK KAY DRAGE PARK BRIDGE	578036	2700	8.86	16.5							
9/28/18	12:50	CHEDOKE CREEK PRINCESS POINT BRIDGE	578035	3600	3.95	16.7							
9/28/18	11:40	S4 EAST CHANNEL KING ST ON RAMP 403 BRANT W	578039	470	12.85	17.7							
9/28/18	11:25	S4 SOUTH CHANNEL KING ST ON RAMP 403 BRANT W	578038	520	9.66	14.9							
9/28/18	11:55	STORM SEWER OUTFALL HE10OF03 HCA CC-3	578037	960	9.81	15.3							
10/03/18	12:25	CHEDOKE CREEK GLEN RD OUTFALL HE09OF01	579023	4200	10.70	15.2							
10/03/18	12:50	CHEDOKE CREEK KAY DRAGE PARK BRIDGE	579025	3400	8.08	15.1							
10/03/18	13:09	CHEDOKE CREEK PRINCESS POINT BRIDGE	579024	7400	3.04	15.0							
10/03/18	11:40	S4 EAST CHANNEL KING ST ON RAMP 403 BRANT W	579028	3900	11.08	15.2							
10/03/18	11:40	S4 SOUTH CHANNEL KING ST ON RAMP 403 BRANT W	579027	2100	9.78	14.5							
10/03/18	12:06	STORM SEWER OUTFALL HE10OF03 HCA CC-3	579026	1100	10.02	14.6							
10/11/18	12:42	CHEDOKE CREEK GLEN RD OUTFALL HE09OF01	579185	880	11.87	18.7							
10/11/18	12:59	CHEDOKE CREEK KAY DRAGE PARK BRIDGE	579187	810	7.06	19.7							
10/11/18	13:18	CHEDOKE CREEK PRINCESS POINT BRIDGE	579186	570	5.22	20.4							
10/11/18	11:44	S4 EAST CHANNEL KING ST ON RAMP 403 BRANT W	579190	830	8.88	17.6							
10/11/18	11:44	S4 SOUTH CHANNEL KING ST ON RAMP 403 BRANT W	579189	920	14.0	19.4							
10/11/18	11:56	STORM SEWER OUTFALL HE10OF03 HCA CC-3	579188	830	9.33	17.2							
10/17/18	10:55	CHEDOKE CREEK GLEN RD OUTFALL HE09OF01	579450	620	12.26	10.9							

Sample Date	Sample Time	Sample Location	Record #	Escherichia coli (CFU/100 mL)	Dissolved Oxygen-Field (mg/L)	Temperature - Field (C)	Phosphorus Dissolved Total (mg/L)	Phosphorus Total (mg/L)	Total Suspended Solids (mg/L)	Ammonia + Ammonium as N (mg/L)	Boron (mg/L)	Fluoride (mg/L)	Caffeine (ug/L)
10/17/18	11:10	CHEDOKE CREEK KAY DRAGE PARK BRIDGE	579452	940	9.34	9.3							
10/17/18	11:25	CHEDOKE CREEK PRINCESS POINT BRIDGE	579451	1030	7.27	9.4							
10/17/18	10:05	S4 EAST CHANNEL KING ST ON RAMP 403 BRANT W	579455	610	10.47	10.6							
10/17/18	10:10	S4 SOUTH CHANNEL KING ST ON RAMP 403 BRANT W	579454	780	13.5	11.2							
10/17/18	10:30	STORM SEWER OUTFALL HE100F03 HCA CC-3	579453	550	10.81	10.8							
10/24/18	12:57	CHEDOKE CREEK GLEN RD OUTFALL HE090F01	579965	700	12.85	9.6							
10/24/18	13:20	CHEDOKE CREEK KAY DRAGE PARK BRIDGE	579967	2300	11.52	8.3							
10/24/18	13:40	CHEDOKE CREEK PRINCESS POINT BRIDGE	579966	3600	10.82	8.8							
10/24/18	12:05	S4 EAST CHANNEL KING ST ON RAMP 403 BRANT W	579970	840	11.25	8.9							
10/24/18	12:05	S4 SOUTH CHANNEL KING ST ON RAMP 403 BRANT W	579969	350	14.14	9.5							
10/24/18	12:26	STORM SEWER OUTFALL HE100F03 HCA CC-3	579968	370	11.41	9.2							
11/02/18	10:57	CHEDOKE CREEK GLEN RD OUTFALL HE090F01	580168	29000	10.97	10.6							
11/02/18	11:19	CHEDOKE CREEK KAY DRAGE PARK BRIDGE	580170	40000	10.4	10.6							
11/02/18	11:40	CHEDOKE CREEK PRINCESS POINT BRIDGE	580169	75000	9.89	10.6							
11/02/18	10:16	S4 EAST CHANNEL KING ST ON RAMP 403 BRANT W	580173	4100	10.24	9.9							
11/02/18	10:05	S4 SOUTH CHANNEL KING ST ON RAMP 403 BRANT W	580172	41000	10.84	11.0							
11/07/18	11:40	CHEDOKE CREEK GLEN RD OUTFALL HE090F01	580693	2000	11.62	10.2							
11/07/18	12:05	CHEDOKE CREEK KAY DRAGE PARK BRIDGE	580695	970	10.37	9.8							
11/07/18	12:25	CHEDOKE CREEK PRINCESS POINT BRIDGE	580694	5400	9.10	9.8							
11/07/18	11:00	S4 EAST CHANNEL KING ST ON RAMP 403 BRANT W	580697	1400	10.51	9.5							
11/07/18	11:05	S4 SOUTH CHANNEL KING ST ON RAMP 403 BRANT W	580696	850	11.86	10.3							
11/14/18	12:05	CHEDOKE CREEK GLEN RD OUTFALL HE090F01	581448	560	13.86	6.6							
11/14/18	12:45	CHEDOKE CREEK KAY DRAGE PARK BRIDGE	581450	810	11.90	5.7							
11/14/18	13:05	CHEDOKE CREEK PRINCESS POINT BRIDGE	581449	770	11.13	5.1							
11/14/18	11:25	S4 EAST CHANNEL KING ST ON RAMP 403 BRANT W	581452	820	12.29	4.5							
11/14/18	11:35	S4 SOUTH CHANNEL KING ST ON RAMP 403 BRANT W	581451	730	13.75	5.9							
11/21/18	12:35	CHEDOKE CREEK GLEN RD OUTFALL HE090F01	581886	1400	13.65	6.2							
11/21/18	12:55	CHEDOKE CREEK KAY DRAGE PARK BRIDGE	581888	810	12.77	5.4							
11/21/18	13:05	CHEDOKE CREEK PRINCESS POINT BRIDGE	581887	2000	11.51	4.1							
11/21/18	11:55	S4 EAST CHANNEL KING ST ON RAMP 403 BRANT W	581890	5600	12.33	4.3							
11/21/18	12:00	S4 SOUTH CHANNEL KING ST ON RAMP 403 BRANT W	581889	2600	13.65	5.7							
11/28/18	11:20	CHEDOKE CREEK GLEN RD OUTFALL HE090F01	582611	8000	12.12	7.1							
11/28/18	11:35	CHEDOKE CREEK KAY DRAGE PARK BRIDGE	582613	5300	11.45	5.9							
11/28/18	11:55	CHEDOKE CREEK PRINCESS POINT BRIDGE	582612	8300	10.93	4.9							
11/28/18	10:55	S4 EAST CHANNEL KING ST ON RAMP 403 BRANT W	582615	1080	11.72	6.1							
11/28/18	11:05	S4 SOUTH CHANNEL KING ST ON RAMP 403 BRANT W	582614	7600	12.42	7.2							
12/05/18	12:45	CHEDOKE CREEK GLEN RD OUTFALL HE090F01	583427	15300	13.13	5.1							
12/05/18	13:10	CHEDOKE CREEK KAY DRAGE PARK BRIDGE	583429	18800	12.3	4.6							
12/05/18	13:20	CHEDOKE CREEK PRINCESS POINT BRIDGE	583428	10500	11.29	4.1							
12/05/18	12:20	S4 EAST CHANNEL KING ST ON RAMP 403 BRANT W	583431	1260	12.31	5.1							
12/05/18	12:20	S4 SOUTH CHANNEL KING ST ON RAMP 403 BRANT W	583430	17700	14.3	5.8							
12/12/18	11:20	CHEDOKE CREEK GLEN RD OUTFALL HE090F01	583586	5000	12.41	4.9							
12/12/18	11:35	CHEDOKE CREEK KAY DRAGE PARK BRIDGE	583588	4600	11.84	3.8							
12/12/18	11:50	CHEDOKE CREEK PRINCESS POINT BRIDGE	583587	3200	10.88	3.7							
12/12/18	10:50	S4 EAST CHANNEL KING ST ON RAMP 403 BRANT W	583590	720	12.8	4.2							

Sample Date	Sample Time	Sample Location	Record #	Escherichia coli (CFU/100 mL)	Dissolved Oxygen-Field (mg/L)	Temperature - Field (C)	Phosphorus Dissolved Total (mg/L)	Phosphorus Total (mg/L)	Total Suspended Solids (mg/L)	Ammonia + Ammonium as N (mg/L)	Boron (mg/L)	Fluoride (mg/L)	Caffeine (ug/L)
12/12/18	10:50	S4 SOUTH CHANNEL KING ST ON RAMP 403 BRANT W	583589	5500	15.16	5.5							
12/19/18	12:10	CHEDOKE CREEK GLEN RD OUTFALL HE09OF01	583731	760	13.15	5.3							
12/19/18	12:40	CHEDOKE CREEK KAY DRAGE PARK BRIDGE	583733	180	12.07	3.9							
12/19/18	13:05	CHEDOKE CREEK PRINCESS POINT BRIDGE	583732	130	12.65	3.9							
12/19/18	11:45	S4 EAST CHANNEL KING ST ON RAMP 403 BRANT W	583735	730	12.79	4.2							
12/19/18	11:45	S4 SOUTH CHANNEL KING ST ON RAMP 403 BRANT W	583734	620	15.12	5.4							
8/29/19	11:45	CHEDOKE CREEK GLEN RD OUTFALL HE09OF01	602529	1600	10.27	17.1							
8/29/19	12:05	CHEDOKE CREEK KAY DRAGE PARK BRIDGE	602531	1300	6.30	21.0							
8/29/19	12:20	CHEDOKE CREEK PRINCESS POINT BRIDGE	602530	680	7.98	22.5							
8/29/19	10:40	S4 EAST CHANNEL KING ST ON RAMP 403 BRANT W	602533	47000	8.28	16.8							
8/29/19	10:50	STORM SEWER OUTFALL HE10OF03 HCA CC-3	602532	60000	8.56	16.5							
11/06/19	12:00	CHEDOKE CREEK GLEN RD OUTFALL HE09OF01	606268	1600	11.93	8.6							
11/06/19	12:30	CHEDOKE CREEK KAY DRAGE PARK BRIDGE	606267	1300	9.69	8.2							
11/06/19	12:45	CHEDOKE CREEK PRINCESS POINT BRIDGE	606266	4200	7.94	9.6							
11/06/19	11:00	S4 EAST CHANNEL KING ST ON RAMP 403 BRANT W	606270	2600	11.30	8.2							
11/06/19	11:30	STORM SEWER OUTFALL HE10OF03 HCA CC-3	606269	870	11.22	9.1							

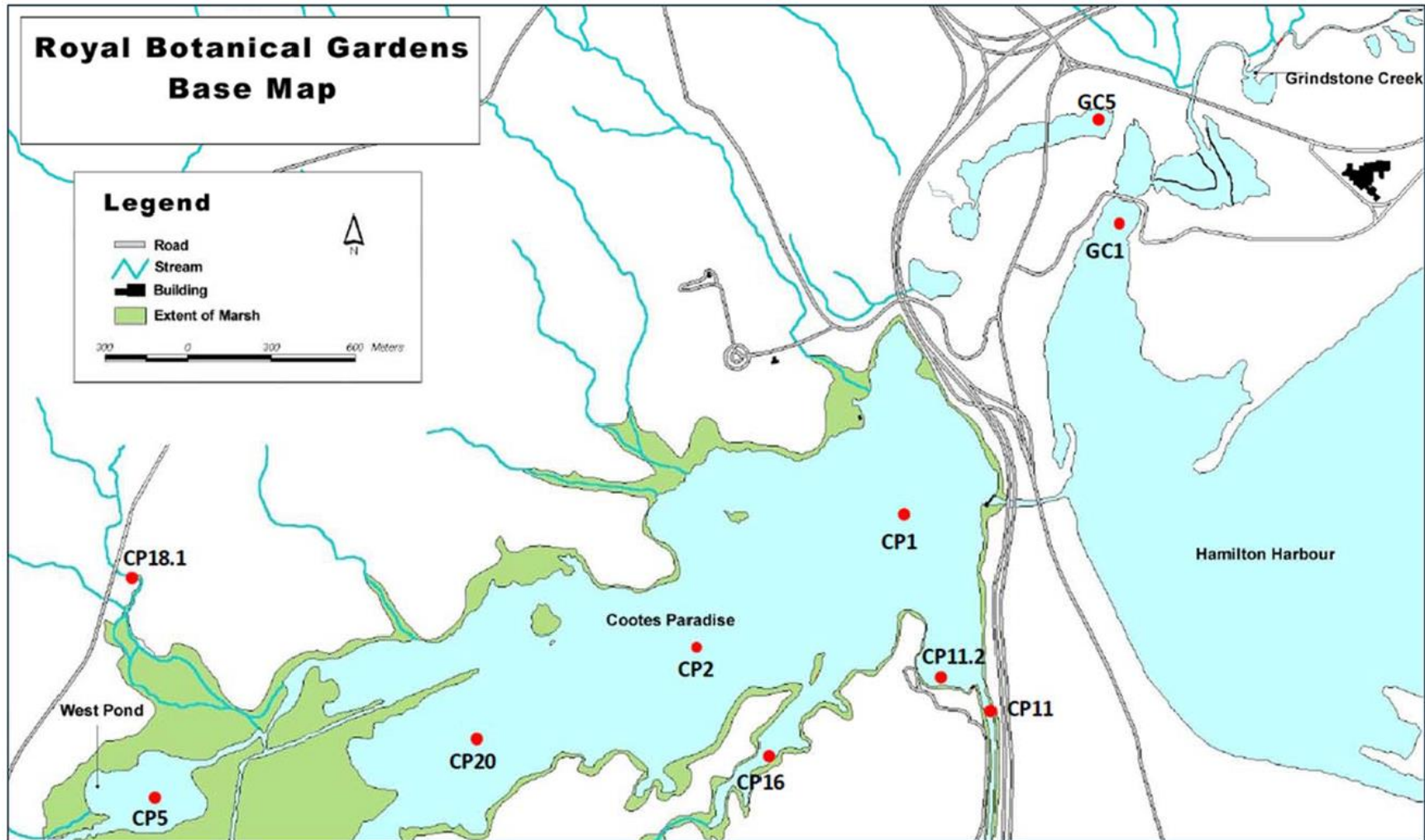
Hamilton Conservation Authority



Source: Figure provided by the City of Hamilton

*Laboratory Data includes CP11 and CP11.2 only

Royal Botanical Gardens



*Laboratory Data includes CP11 and CP11.2 only