



City of Hamilton
LIGHT RAIL TRANSIT SUB-COMMITTEE
AGENDA

Meeting #: 22-002
Date: July 18, 2022
Time: 9:30 a.m.
Location: Council Chambers
Hamilton City Hall
71 Main Street West

Carrie McIntosh, Legislative Coordinator (905) 546-2424 ext. 2729

| | Pages |
|--|--------------|
| 1. CEREMONIAL ACTIVITIES | |
| 2. APPROVAL OF AGENDA | |
| (Added Items, if applicable, will be noted with *) | |
| 3. DECLARATIONS OF INTEREST | |
| 4. APPROVAL OF MINUTES OF PREVIOUS MEETING | |
| 4.1. May 16, 2022 | 3 |
| 5. COMMUNICATIONS | |
| 6. DELEGATION REQUESTS | |
| 7. CONSENT ITEMS | |
| 8. PUBLIC HEARINGS / DELEGATIONS | |
| 9. STAFF PRESENTATIONS | |
| 9.1. Hamilton Light Rail Transit (LRT) Design Update (PED22118(a)) (City Wide) | 11 |
| 10. DISCUSSION ITEMS | |

11. MOTIONS
12. NOTICES OF MOTION
13. GENERAL INFORMATION / OTHER BUSINESS
14. PRIVATE AND CONFIDENTIAL
15. ADJOURNMENT



**LIGHT RAIL TRANSIT SUB-COMMITTEE
MINUTES 22-001**

10:30 a.m.

Monday, May 16, 2022

Council Chambers

Hamilton City Hall

71 Main Street West

Present: Councillors M. Wilson (Vice-Chair), J.P. Danko, L. Ferguson,
S. Merulla, N. Nann, R. Powers

**Absent with
Regrets:** Mayor F. Eisenberger (Chair), Councillor J. Farr

**THE FOLLOWING ITEMS WERE REFERRED TO GENERAL ISSUES COMMITTEE
FOR CONSIDERATION:**

1. Appointment of Committee Vice-Chair for 2022 (Item 1)

(Merulla/Nann)

That Councillor M. Wilson be appointed as Vice-Chair of the Light Rail Transit Sub-Committee for 2022.

Result: Motion CARRIED by a vote of 6 to 0, as follows:

NOT PRESENT - Chair - Mayor Fred Eisenberger
YES - Ward 1 Councillor Maureen Wilson
NOT PRESENT - Ward 2 Councillor Jason Farr
YES - Ward 3 Councillor Nrinder Nann
YES - Ward 4 Councillor Sam Merulla
YES - Ward 5 Councillor Russ Powers
YES - Ward 8 Councillor John-Paul Danko
YES - Ward 12 Councillor Lloyd Ferguson

**2. Hamilton Light Rail Transit (LRT) Project Update (PED22117) (City Wide)
(Item 8.1)**

(Nann/Powers)

That Report PED22117, respecting Hamilton Light Rail Transit (LRT) Project Update, be received.

Result: Motion CARRIED by a vote of 6 to 0, as follows:

NOT PRESENT - Chair - Mayor Fred Eisenberger
 YES - Ward 1 Councillor Maureen Wilson
 NOT PRESENT - Ward 2 Councillor Jason Farr
 YES - Ward 3 Councillor Nrinder Nann
 YES - Ward 4 Councillor Sam Merulla
 YES - Ward 5 Councillor Russ Powers
 YES - Ward 8 Councillor John-Paul Danko
 YES - Ward 12 Councillor Lloyd Ferguson

FOR INFORMATION:

(a) APPROVAL OF AGENDA (Item 2)

The Committee Clerk advised of the following changes to the agenda.

5. COMMUNICATIONS

- 5.1 Correspondence from the Hamilton Community Benefits Network respecting Promoting Affordable Housing in Transit-Oriented Development

Recommendation: Be received

6. DELEGATION REQUESTS

- 6.3 Delegation Requests respecting Inclusionary Zoning (for today's meeting)

6.3.a. Anica Rak, ACORN (Video Submission)

6.3.b. Liz Scott, ACORN (Video Submission)

6.3.c. Marnie Schurter, ACORN (Video Submission)

6.3.d. Elizabeth McMicking, ACORN (Video Submission)

- 6.4 Eshan Merali, Hamilton Community Benefits Network respecting Lack of Community Benefits in the LRT Project

- 6.5 Koubra Hagggar, Centre for Civic Inclusion respecting the Hamilton LRT and Affordable Housing (Video Submission)

- 6.6 Nicole Smith, Kumon Hamilton West End respecting Support for LRT

(Powers/Nann)

That the agenda for the May 16, 2022 Light Rail Transit Sub-Committee meeting be approved, as amended.

Result: Motion CARRIED by a vote of 6 to 0, as follows:

NOT PRESENT - Chair - Mayor Fred Eisenberger
 YES - Ward 1 Councillor Maureen Wilson
 NOT PRESENT - Ward 2 Councillor Jason Farr
 YES - Ward 3 Councillor Nrinder Nann
 YES - Ward 4 Councillor Sam Merulla
 YES - Ward 5 Councillor Russ Powers
 YES - Ward 8 Councillor John-Paul Danko
 YES - Ward 12 Councillor Lloyd Ferguson

(b) DECLARATIONS OF INTEREST (Item 3)

There were no declarations of interest.

(c) APPROVAL OF MINUTES OF PREVIOUS MEETING (Item 4)

(i) September 12, 2017 (Item 4.1)

(Merulla/Ferguson)

That the Minutes of the September 12, 2017 meeting of the Public Works Committee be approved, as presented.

Result: Motion CARRIED by a vote of 6 to 0, as follows:

NOT PRESENT - Chair - Mayor Fred Eisenberger
 YES - Ward 1 Councillor Maureen Wilson
 NOT PRESENT - Ward 2 Councillor Jason Farr
 YES - Ward 3 Councillor Nrinder Nann
 YES - Ward 4 Councillor Sam Merulla
 YES - Ward 5 Councillor Russ Powers
 YES - Ward 8 Councillor John-Paul Danko
 YES - Ward 12 Councillor Lloyd Ferguson

(d) COMMUNICATIONS (Item 5)

(i) Correspondence from Hamilton Community Benefits Network respecting Promoting Affordable Housing in Transit-Oriented Development (Item 5.1)

(Danko/Merulla)

That the Correspondence from Hamilton Community Benefits Network respecting Promoting Affordable Housing in Transit-Oriented Development, be received.

Result: Motion CARRIED by a vote of 6 to 0, as follows:

NOT PRESENT - Chair - Mayor Fred Eisenberger
 YES - Ward 1 Councillor Maureen Wilson
 NOT PRESENT - Ward 2 Councillor Jason Farr
 YES - Ward 3 Councillor Nrinder Nann
 YES - Ward 4 Councillor Sam Merulla
 YES - Ward 5 Councillor Russ Powers
 YES - Ward 8 Councillor John-Paul Danko
 YES - Ward 12 Councillor Lloyd Ferguson

(e) DELEGATION REQUESTS (Item 6)

(Merulla/Nann)

That the following Delegation Requests, be approved for today's meeting:

- (i) Ian Borsuk, Environment Hamilton respecting LRT Operations (for today's meeting) (Item 6.1)
- (ii) Karl Andrus, Hamilton Community Benefits Network respecting Affordable Housing and Hamilton LRT (for today's meeting) (Item 6.2)
- (iii) Delegation Requests respecting Inclusionary Zoning (for today's meeting) (item 6.3)
 - (a) Anica Rak, ACORN (Video Submission) (Item 6.3(a))
 - (b) Liz Scott, ACORN (Video Submission) (Item 6.3(b))
 - (c) Marnie Schurter, ACORN (Video Submission) (Item 6.3(c))
 - (d) Elizabeth McMicking, ACORN (Video Submission) (Item 6.3(d))
- (iv) Eshan Merali, Hamilton Community Benefits Network respecting Lack of Benefits in the LRT Project (item 6.4)
- (v) Koubra Hagggar, Centre for Civic Inclusion respecting the Hamilton LRT and Affordable Housing (Video Submission) (Item 6.5)

- (vi) Nicole Smith, Kumon Hamilton West End respecting Support for LRT (Item 6.6)

Result: Motion CARRIED by a vote of 6 to 0, as follows:

NOT PRESENT - Chair - Mayor Fred Eisenberger
 YES - Ward 1 Councillor Maureen Wilson
 NOT PRESENT - Ward 2 Councillor Jason Farr
 YES - Ward 3 Councillor Nrinder Nann
 YES - Ward 4 Councillor Sam Merulla
 YES - Ward 5 Councillor Russ Powers
 YES - Ward 8 Councillor John-Paul Danko
 YES - Ward 12 Councillor Lloyd Ferguson

(f) STAFF PRESENTATIONS (Item 8)

- (i) **Hamilton Light Rail Transit (LRT) Project Update (PED22117) (City Wide) (Item 8.1)**

Abdul Shaikh, Director, Hamilton LRT Project Office, addressed Committee respecting Report PED22117, Hamilton Light Rail Transit (LRT) Project Update, with the aid of a PowerPoint presentation.

(Nann/Powers)

That the presentation respecting Report PED22117, Hamilton Light Rail Transit (LRT) Project Update, be received.

Result: Motion CARRIED by a vote of 6 to 0, as follows:

NOT PRESENT - Chair - Mayor Fred Eisenberger
 YES - Ward 1 Councillor Maureen Wilson
 NOT PRESENT - Ward 2 Councillor Jason Farr
 YES - Ward 3 Councillor Nrinder Nann
 YES - Ward 4 Councillor Sam Merulla
 YES - Ward 5 Councillor Russ Powers
 YES - Ward 8 Councillor John-Paul Danko
 YES - Ward 12 Councillor Lloyd Ferguson

For further disposition of this matter, refer to Item 2.

(ii) Hamilton Light Rail Transit (LRT) Design Update (PED22118) (City Wide) (Item 8.2)

Abdul Shaikh, Director, Hamilton LRT Project Office, addressed Committee respecting Report PED22118, Hamilton Light Rail Transit (LRT) Design Update, with the aid of a PowerPoint presentation.

The Light Rail Transit Sub-Committee recessed for 15 minutes until 11:59 p.m. due to loss of quorum.

Due to a conflict between the Light Rail Transit Sub-Committee's Terms of Reference and the Procedural By-law, with regards to quorum, the following highlighted items are referred to the June 1, 2022 General Issues Committee meeting for consideration:

- (1) That the presentation respecting Report PED22118, Hamilton Light Rail Transit (LRT) Design Update, be received.
- (2) That Report PED22118, respecting Hamilton Light Rail Transit (LRT) Design Update, be received.

(iii) Direction to Light Rail Transit Staff to Meet with the Hamilton Community Benefits Network (Added Item 11.1)

- (3) That Light Rail Transit staff be directed to meet with the Hamilton Community Benefits Network to identify where in the process moving forward they can participate in the definition of Community Benefits outcomes to be achieved through the Light Rail Transit project in Hamilton.

(g) PUBLIC HEARINGS / DELEGATIONS (Item 9)

(i) Ian Borsuk, Environment Hamilton respecting LRT Operations (Item 9.1)

Ian Borsuk, Environment Hamilton, addressed the Committee respecting LRT Operations.

(ii) Karl Andrus, Hamilton Community Benefits Network respecting Affordable Housing and Hamilton LRT Item 9.2)

- (4) That Karl Andrus be granted an additional 2.5 minutes, beyond the 5-minute time limit, to complete their delegation respecting Affordable Housing and Hamilton LRT.

Karl Andrus, Hamilton Community Benefits Network, addressed the Committee respecting Affordable Housing and Hamilton LRT with the aid of a PowerPoint presentation.

(iii) Delegations respecting Inclusionary Zoning (Item 9.3)

The following individuals addressed the Committee by pre-recorded video respecting Inclusionary Zoning:

- (a) Anica Rak, ACORN - Video Delegation (Item 9.3(a))
- (b) Liz Scott, ACORN - Video Delegation (Item 9.3(b))
- (c) Marnie Schurter, ACORN - Video Delegation (Item 9.3(c))
- (d) Elizabeth McMicking, ACORN - Video Delegation (Item 9.3(d))

(iv) Eshan Merali, Hamilton Community Benefits Network respecting Lack of Community Benefits in the LRT Project (Item 9.4)

Eshan Merali, Hamilton Community Benefits Network, addressed the Committee respecting Lack of Community Benefits in the LRT Project with the aid of a PowerPoint presentation.

(iv) Nicole Smith, Kumon Hamilton West End respecting Support for LRT (Item 9.5)

Nicole Smith, Kumon Hamilton West End, addressed the Committee respecting Support for LRT.

(vi) Koubra Hagggar, Centre for Civic Inclusion respecting the Hamilton LRT and Affordable Housing - Video Delegation (Item 9.6)

Koubra Hagggar, Centre for Civic Inclusion addressed the Committee by pre-recorded video respecting Inclusion respecting the Hamilton LRT and Affordable Housing.

(5) That the following delegations, be received:

- (i) Ian Borsuk, Environment Hamilton respecting LRT Operations (Item 9.1)

**Light Rail Transit Sub-Committee
Minutes 22-001****May 16, 2022
Page 8 of 8**

- (ii) Karl Andrus, Hamilton Community Benefits Network respecting Affordable Housing and Hamilton LRT (Item 9.2)
- (iii) Delegation by pre-recorded video respecting Inclusionary Zoning (Item 9.3)
 - (a) Anica Rak, ACORN (Video Submission) (Item 9.3(a))
 - (b) Liz Scott, ACORN (Video Submission) (Item 9.3(b))
 - (c) Marnie Schurter, ACORN (Video Submission) (Item 9.3(c))
 - (d) Elizabeth McMicking, ACORN (Video Submission) (Item 9.3(d))
- (iv) Eshan Merali, Hamilton Community Benefits Network respecting Lack of Benefits in the LRT Project (Item 9.4)
- (v) Koubra Hagggar, Centre for Civic Inclusion respecting the Hamilton LRT and Affordable Housing (Video Submission) (Item 9.5)
- (vi) Nicole Smith, Kumon Hamilton West End respecting Support for LRT (Item 9.6)

(i) ADJOURNMENT (Item 15)

- (6) That there being no further business, the meeting adjourned at 1:02 p.m.


Respectfully submitted,

Councillor M. Wilson, Vice-Chair,
Light Rail Transit Sub-Committee

Carrie McIntosh
Legislative Coordinator
Office of the City Clerk



INFORMATION REPORT

| | |
|---------------------------|---|
| TO: | Chair and Members Light Rail Transit Sub-Committee |
| COMMITTEE DATE: | July 18, 2022 |
| SUBJECT/REPORT NO: | Hamilton Light Rail Transit (LRT) Design Update (PED22118(a)) (City Wide) |
| WARD(S) AFFECTED: | City Wide |
| PREPARED BY: | Abdul Shaikh (905) 546-2424 Ext. 6559 Chris McCafferty (905) 546-2424 Ext. 2320 |
| SUBMITTED BY: | Abdul Shaikh Director, Hamilton LRT Project Office Planning and Economic Development Department |
| SIGNATURE: |  |

COUNCIL DIRECTION

Not applicable.

INFORMATION

At the May 16, 2022, meeting of the LRT Sub-Committee, staff presented an update on the design of the Hamilton LRT project in the Hamilton Light Rail Transit (LRT) Design Update (PED22118). That report provided a high-level overview of the LRT design and key areas of focus. As the slides noted, the design information in that report was current to December 2019.

The purpose of this report is to provide a design illustration of the LRT corridor, supplementing the information presented in report PED22118. As with the prior report, the design information is current to December 2019. This design illustration is provided in Appendix "A" to Report PED22118(a). The attached design illustration represents the current state of the design and may be subject to change as the design is further advanced. This design illustration should be read in conjunction with the report PED22118.

SUBJECT: Hamilton Light Rail Transit (LRT) Design Update (PED22118(a)) (City Wide) – Page 2 of 2

APPENDICES AND SCHEDULES ATTACHED

Appendix “A” to Report PED22118(a) – Hamilton Light Rail Transit (LRT)- Design Illustration

Ward 1 MAIN ST (Cootes Drive to Dalewood Crescent)



Highlights:

- Guideway is Side Running west of Dalewood Crescent
- Guideway is Centre Running east of Dalewood Crescent
- McMaster Stop adjacent to north sidewalk to provide convenient connectivity to Campus (Dual LRT Platforms)

- Note: Illustrations are representative of the Corridor Design in 2019 and are subject to further revision.

LEGEND

| | | | | | | | | | | | | | |
|--|---------------------------|--|------------------------------|--|-----------------------------|--|---------------------------|--|--------------|--|--------------|--|------------------------------|
| | TRAFFIC SIGNAL MAINTAINED | | PEDESTRIAN SIGNAL MAINTAINED | | POTENTIAL PEDESTRIAN SIGNAL | | PEDESTRIAN SIGNAL REMOVED | | LRT GUIDEWAY | | LRT PLATFORM | | SIDESTREET TURN RESTRICTIONS |
|--|---------------------------|--|------------------------------|--|-----------------------------|--|---------------------------|--|--------------|--|--------------|--|------------------------------|

Ward 1 MAIN ST (Dalewood Crescent to Paisley Avenue)



Highlights:

- Guideway is Side Running west of Dalewood Crescent
- Guideway is Centre Running east of Dalewood Crescent

- Note: Illustrations are representative of the Corridor Design in 2019 and are subject to further revision.

LEGEND

| | | | | | | | | | | | | | |
|--|---------------------------|--|------------------------------|--|-----------------------------|--|---------------------------|--|--------------|--|--------------|--|------------------------------|
| | TRAFFIC SIGNAL MAINTAINED | | PEDESTRIAN SIGNAL MAINTAINED | | POTENTIAL PEDESTRIAN SIGNAL | | PEDESTRIAN SIGNAL REMOVED | | LRT GUIDEWAY | | LRT PLATFORM | | SIDESTREET TURN RESTRICTIONS |
|--|---------------------------|--|------------------------------|--|-----------------------------|--|---------------------------|--|--------------|--|--------------|--|------------------------------|

Ward 1 MAIN ST (Paisley Avenue to Macklin Street)



Highlights:

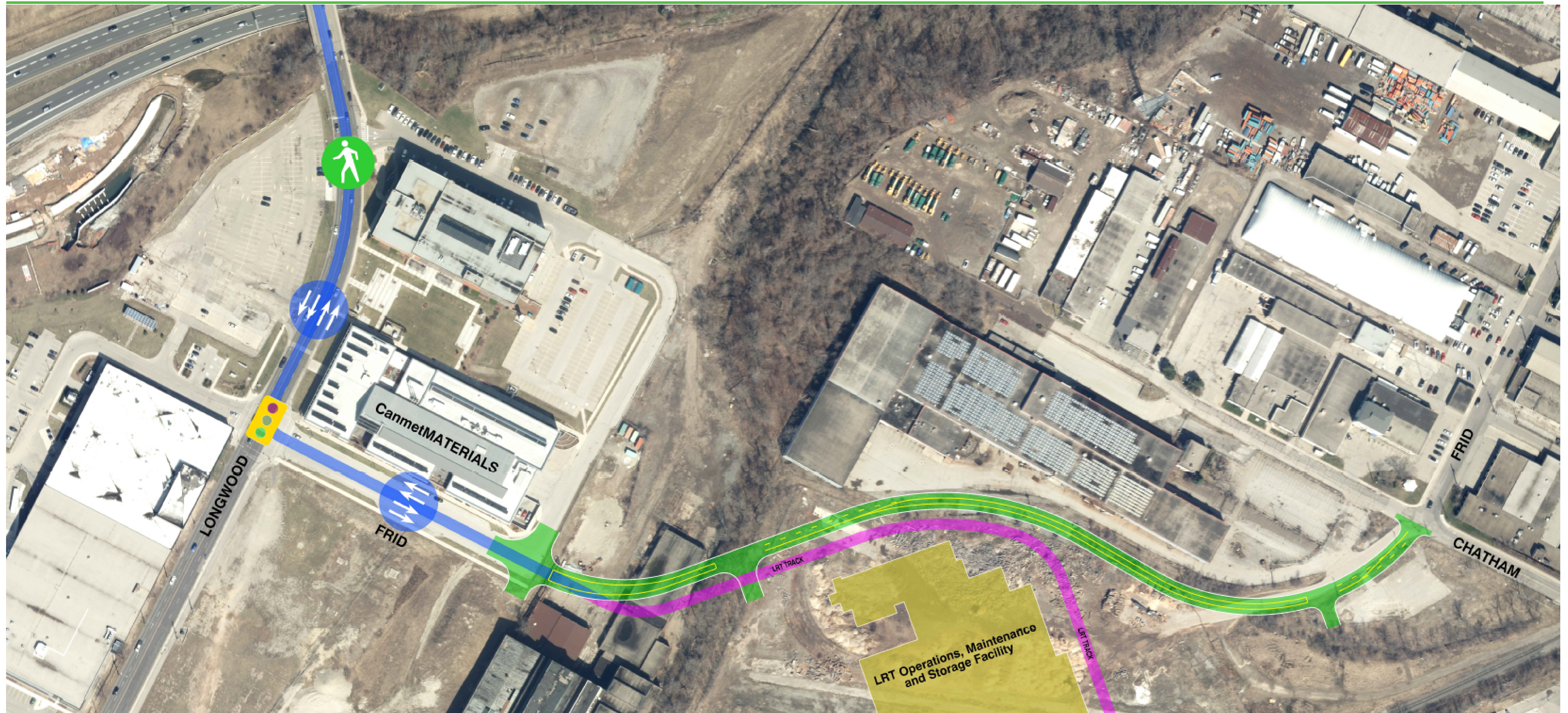
- Reconstruction of the Longwood Road Bridge
- Guideway is Centre Running west of Paradise Road
- Single Platform at Longwood Road
- Guideway is either Side Running or on LRT Only Bridge east of Paradise Road
- Intersection of Paradise Road and Main Street changed to a T-intersection

- Note: Illustrations are representative of the Corridor Design in 2019 and are subject to further revision.

LEGEND

| | | | | | | | | | | | | | | | |
|--|---------------------------|--|------------------------------|--|-----------------------------|--|---------------------------|--|-------------------------|--|-----------------------------|--|--------------|--|------------------------------|
| | TRAFFIC SIGNAL MAINTAINED | | PEDESTRIAN SIGNAL MAINTAINED | | POTENTIAL PEDESTRIAN SIGNAL | | PEDESTRIAN SIGNAL REMOVED | | SEGREGATED LRT GUIDEWAY | | LRT GUIDEWAY SHARED RUNNING | | LRT PLATFORM | | SIDESTREET TURN RESTRICTIONS |
|--|---------------------------|--|------------------------------|--|-----------------------------|--|---------------------------|--|-------------------------|--|-----------------------------|--|--------------|--|------------------------------|

Ward 1 LONGWOOD ROAD and FRID STREET EXTENSION



Highlights:

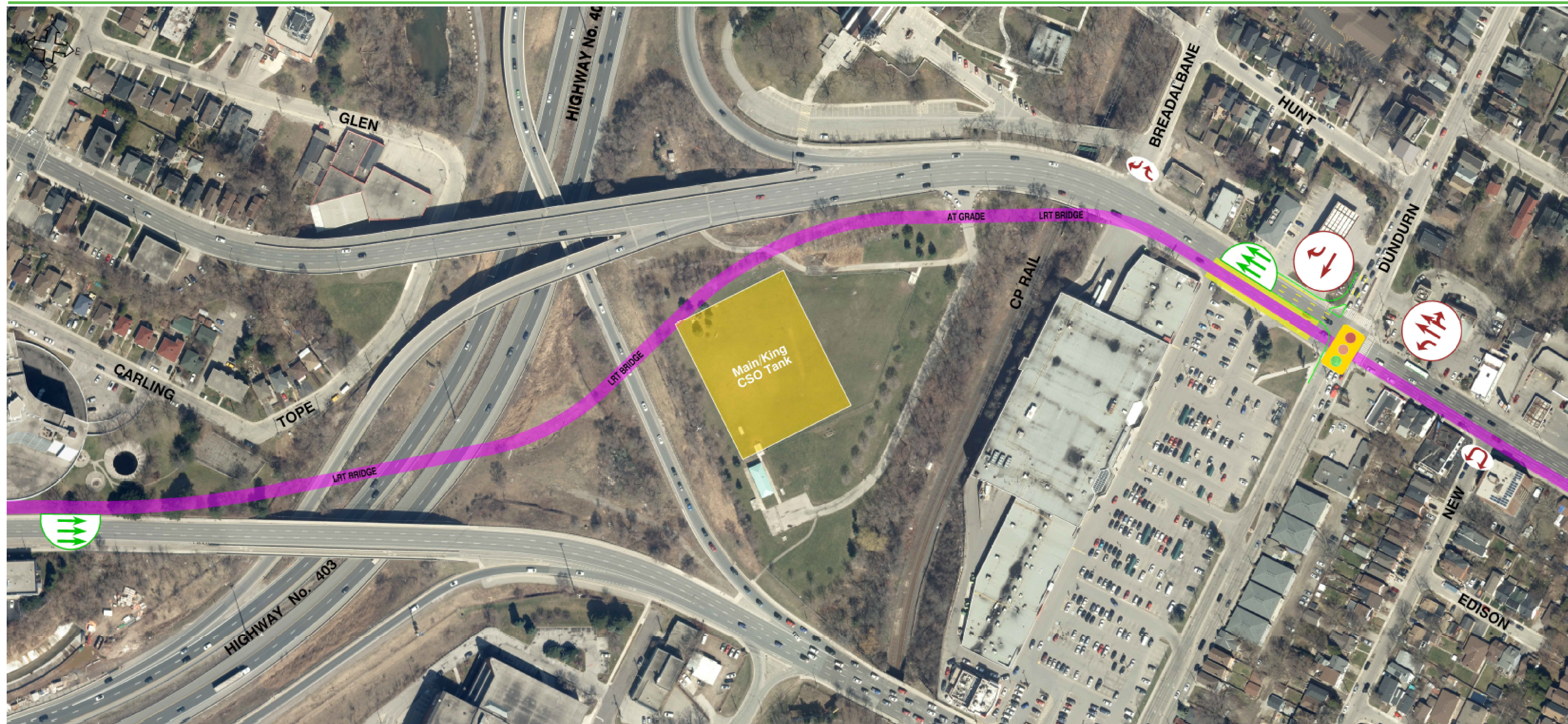
- Reconstruction of the Longwood Road Bridge
- Construction of Frid Street Extension to connect the Chatham and Longwood
- Guideway is Centre Running on Longwood and existing portion of Frid Street
- Guideway is Side Running on the Frid Street Extension
- Longwood Road:
 Multi-use Facility, two Northbound and two Southbound Vehicular Lanes

- Note: Illustrations are representative of the Corridor Design in 2019 and are subject to further revision.

LEGEND

| | | | | | | | | | | | | | | | |
|--|---------------------------|--|------------------------------|--|-----------------------------|--|---------------------------|--|-------------------------|--|-----------------------------|--|--------------|--|------------------------------|
| | TRAFFIC SIGNAL MAINTAINED | | PEDESTRIAN SIGNAL MAINTAINED | | POTENTIAL PEDESTRIAN SIGNAL | | PEDESTRIAN SIGNAL REMOVED | | SEGREGATED LRT GUIDEWAY | | LRT GUIDEWAY SHARED RUNNING | | LRT PLATFORM | | SIDESTREET TURN RESTRICTIONS |
|--|---------------------------|--|------------------------------|--|-----------------------------|--|---------------------------|--|-------------------------|--|-----------------------------|--|--------------|--|------------------------------|

Ward 1 LRT ONLY BRIDGE (Across Highway No.403)



Highlights:

- LRT Bridge with a Track in each direction
- Emergency Vehicles use of Bridge limited to incidents on the Bridge
- Access to Dog Park limited to Pedestrians and City Maintenance Vehicles

- Note: Illustrations are representative of the Corridor Design in 2019 and are subject to further revision.

LEGEND

| | | | | | | | | | | | | | |
|--|---------------------------|--|------------------------------|--|-----------------------------|--|---------------------------|--|--------------|--|--------------|--|------------------------------|
| | TRAFFIC SIGNAL MAINTAINED | | PEDESTRIAN SIGNAL MAINTAINED | | POTENTIAL PEDESTRIAN SIGNAL | | PEDESTRIAN SIGNAL REMOVED | | LRT GUIDEWAY | | LRT PLATFORM | | SIDESTREET TURN RESTRICTIONS |
|--|---------------------------|--|------------------------------|--|-----------------------------|--|---------------------------|--|--------------|--|--------------|--|------------------------------|

Ward 1 KING STREET (Highway No.403 to Strathcona Avenue)



Highlights:

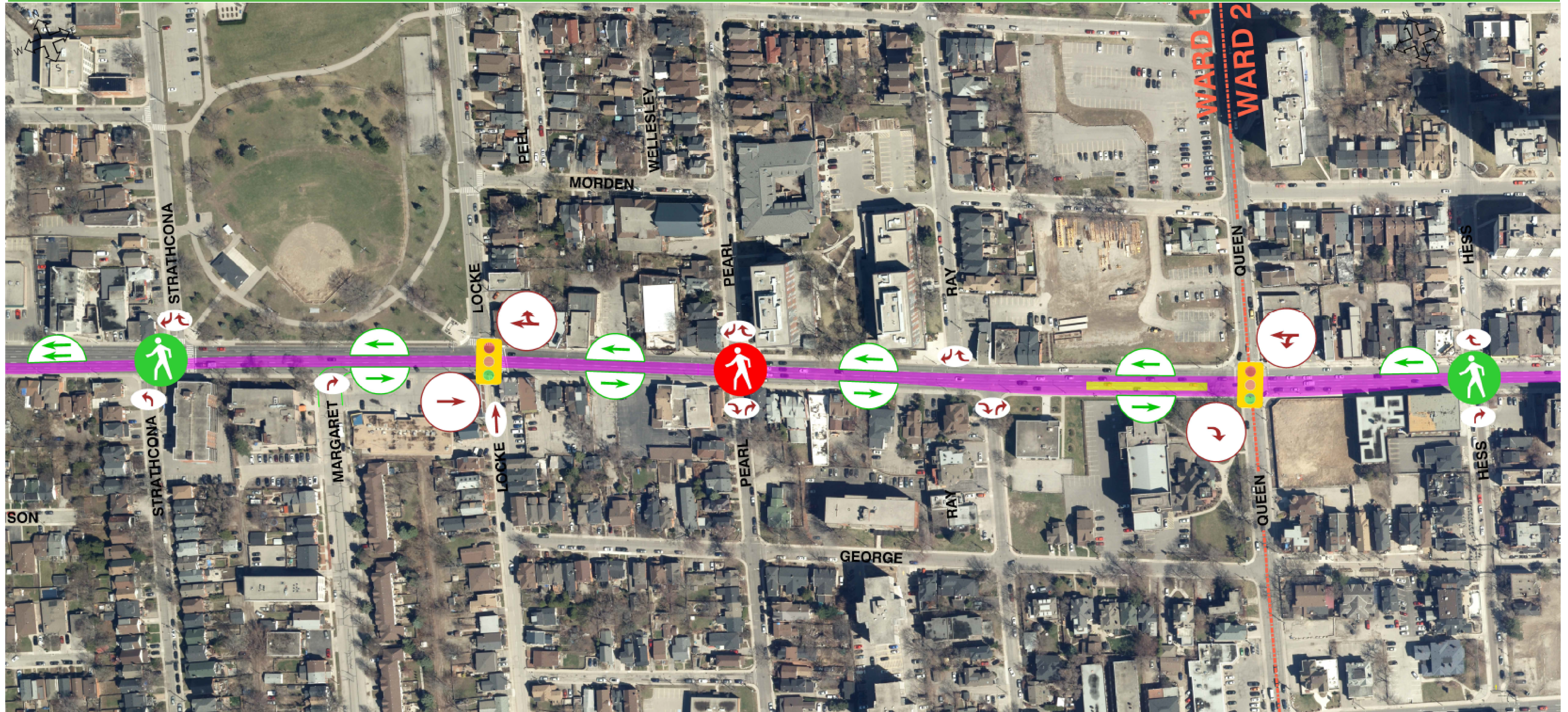
- Guideway is Centre Running east of Breadalbane
- Dundurn LRT Stop adjacent to south sidewalk to provide convenient connectivity to Plaza (Dual Platforms)

- Note: Illustrations are representative of the Corridor Design in 2019 and are subject to further revision.

LEGEND

| | | | | | | | | | | | | | |
|--|---------------------------|--|------------------------------|--|-----------------------------|--|---------------------------|--|--------------|--|--------------|--|------------------------------|
| | TRAFFIC SIGNAL MAINTAINED | | PEDESTRIAN SIGNAL MAINTAINED | | POTENTIAL PEDESTRIAN SIGNAL | | PEDESTRIAN SIGNAL REMOVED | | LRT GUIDEWAY | | LRT PLATFORM | | SIDESTREET TURN RESTRICTIONS |
|--|---------------------------|--|------------------------------|--|-----------------------------|--|---------------------------|--|--------------|--|--------------|--|------------------------------|

Wards 1 and 2 KING STREET (Strathcona Avenue to Hess Street)



Highlights:

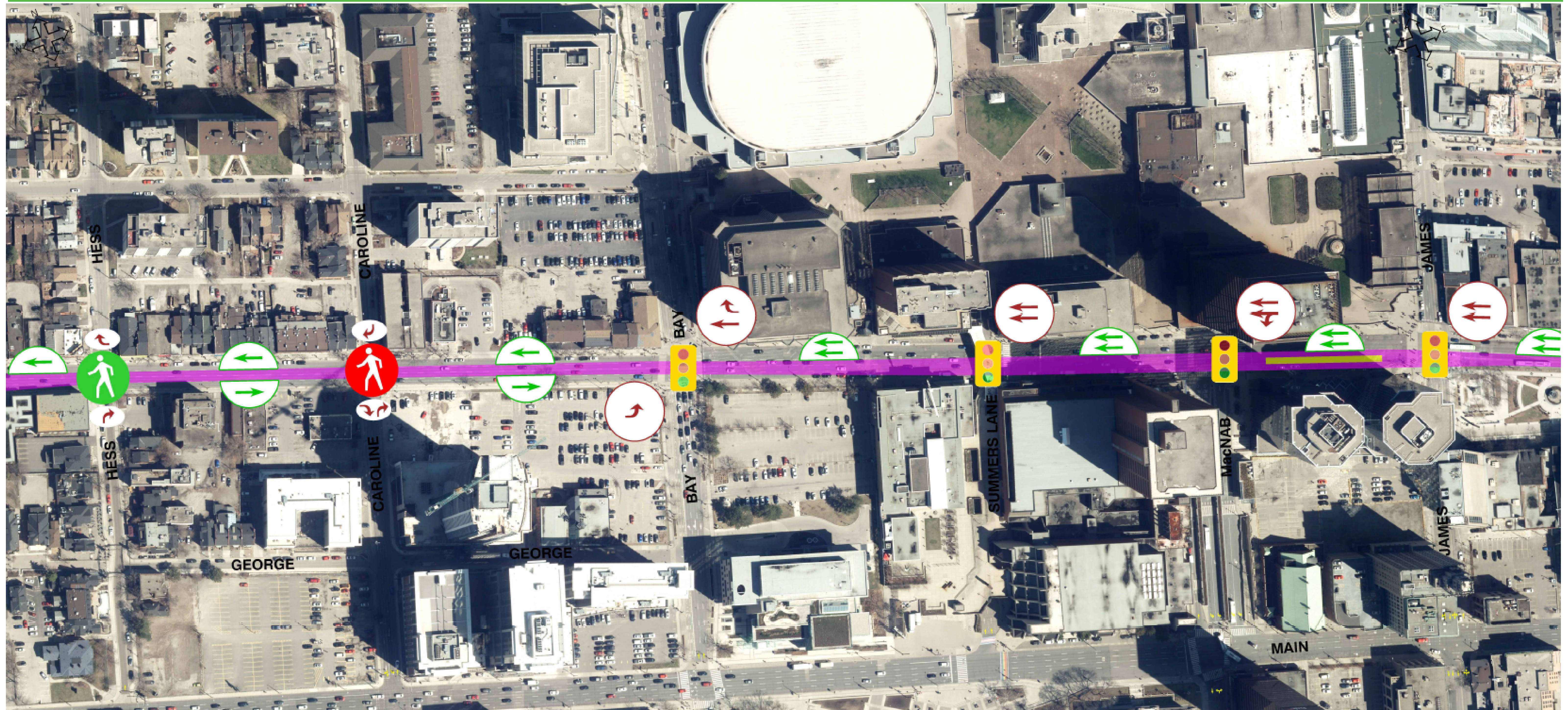
- Guideway is Centre Running
- Single Centre LRT Platform at Queen St

- Note: Illustrations are representative of the Corridor Design in 2019 and are subject to further revision.

LEGEND

| | | | | | | | | | | | | | |
|--|---------------------------|--|------------------------------|--|-----------------------------|--|---------------------------|--|--------------|--|--------------|--|------------------------------|
| | TRAFFIC SIGNAL MAINTAINED | | PEDESTRIAN SIGNAL MAINTAINED | | POTENTIAL PEDESTRIAN SIGNAL | | PEDESTRIAN SIGNAL REMOVED | | LRT GUIDEWAY | | LRT PLATFORM | | SIDESTREET TURN RESTRICTIONS |
|--|---------------------------|--|------------------------------|--|-----------------------------|--|---------------------------|--|--------------|--|--------------|--|------------------------------|

Ward 2 KING STREET (Hess Street to James Street)



Highlights:

- Guideway is Centre Running
- Single LRT Side Platform at James St

- Note: Illustrations are representative of the Corridor Design in 2019 and are subject to further revision.

LEGEND

| | | | | | | | | | | | | | |
|--|---------------------------|--|------------------------------|--|-----------------------------|--|---------------------------|--|--------------|--|--------------|--|------------------------------|
| | TRAFFIC SIGNAL MAINTAINED | | PEDESTRIAN SIGNAL MAINTAINED | | POTENTIAL PEDESTRIAN SIGNAL | | PEDESTRIAN SIGNAL REMOVED | | LRT GUIDEWAY | | LRT PLATFORM | | SIDESTREET TURN RESTRICTIONS |
|--|---------------------------|--|------------------------------|--|-----------------------------|--|---------------------------|--|--------------|--|--------------|--|------------------------------|

Ward 2 KING STREET (James Street to Jarvis Street)



Highlights:

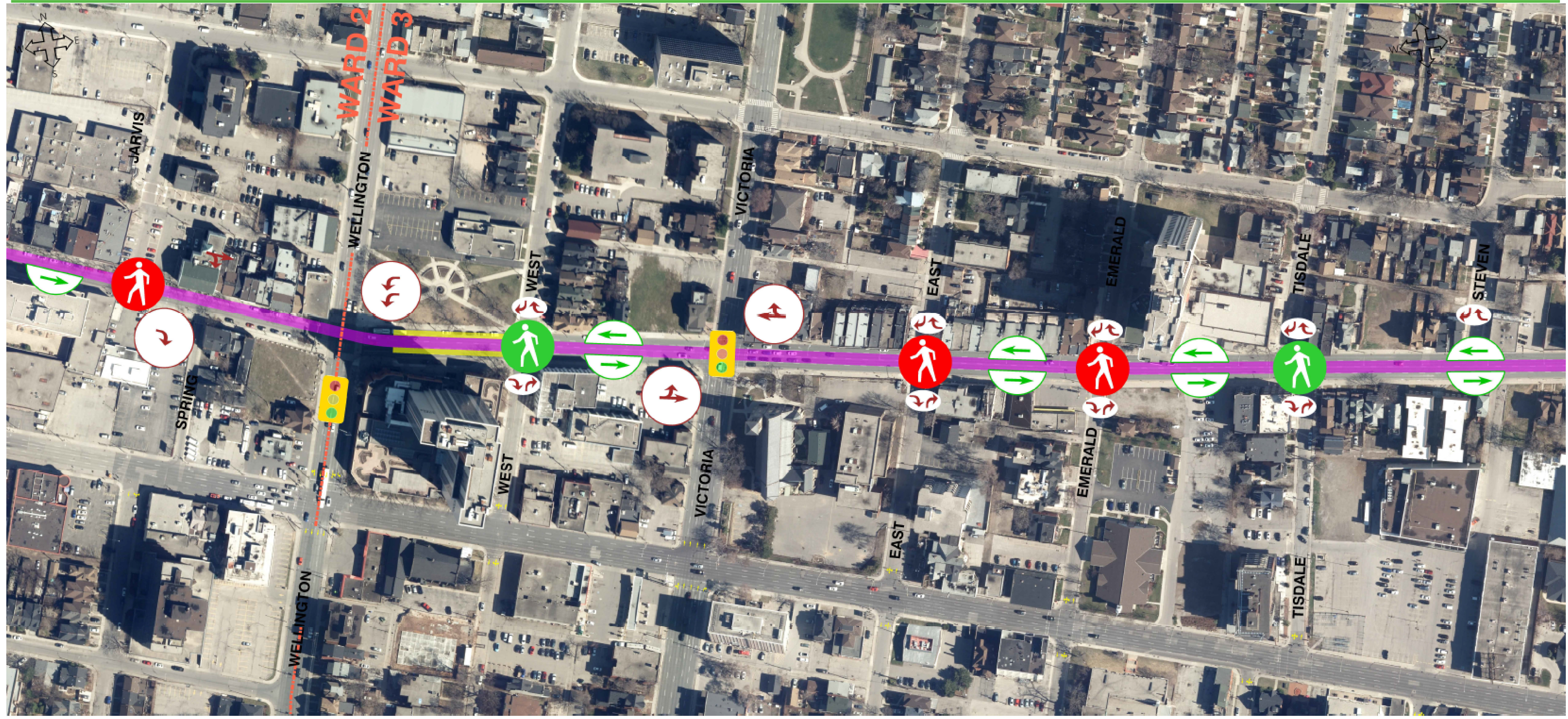
- Guideway is Side Running (North Side) from Spring St to Catharine St
One Eastbound Vehicular lane
- Guideway is Centre Running from Catharine St to John St
One Eastbound and One Westbound Vehicular lane
- Guideway is Side Running (South Side) from John St to Bay St
Two Westbound Vehicular lanes
- Alleyway (North Side) Wellington to Catharine used by Service Vehicles

- Note: Illustrations are representative of the Corridor Design in 2019 and are subject to further revision.

LEGEND

| | | | | | | | | | | | | | |
|--|---------------------------|--|------------------------------|--|-----------------------------|--|---------------------------|--|--------------|--|--------------|--|------------------------------|
| | TRAFFIC SIGNAL MAINTAINED | | PEDESTRIAN SIGNAL MAINTAINED | | POTENTIAL PEDESTRIAN SIGNAL | | PEDESTRIAN SIGNAL REMOVED | | LRT GUIDEWAY | | LRT PLATFORM | | SIDESTREET TURN RESTRICTIONS |
|--|---------------------------|--|------------------------------|--|-----------------------------|--|---------------------------|--|--------------|--|--------------|--|------------------------------|

Wards 2 and 3 KING STREET (Jarvis Street to Steven Street)



Highlights:

- No Westbound access to International Village and Downtown Core at Wellington St
- Guideway is Side Running (North Side) from Spring St to Catharine St with One Eastbound Vehicular lane
- Guideway is Centre Running east of Wellington
- Two LRT Platforms at Wellington St

- Note: Illustrations are representative of the Corridor Design in 2019 and are subject to further revision.

LEGEND

| | | | | | | | | | | | | | |
|--|---------------------------|--|------------------------------|--|-----------------------------|--|---------------------------|--|--------------|--|--------------|--|------------------------------|
| | TRAFFIC SIGNAL MAINTAINED | | PEDESTRIAN SIGNAL MAINTAINED | | POTENTIAL PEDESTRIAN SIGNAL | | PEDESTRIAN SIGNAL REMOVED | | LRT GUIDEWAY | | LRT PLATFORM | | SIDESTREET TURN RESTRICTIONS |
|--|---------------------------|--|------------------------------|--|-----------------------------|--|---------------------------|--|--------------|--|--------------|--|------------------------------|

Ward 3 KING STREET (Steven Street to Fairleigh Avenue)



Highlights:

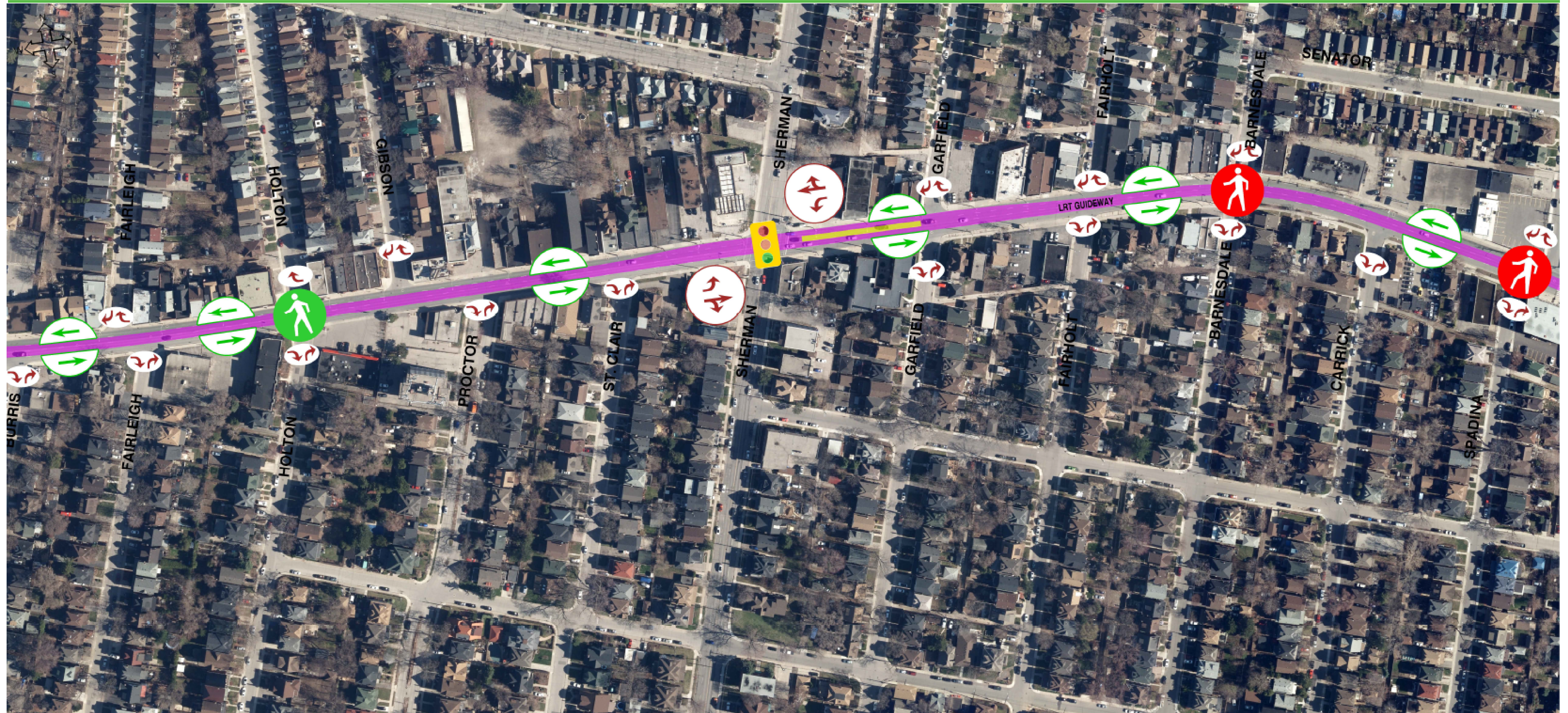
- Guideway is Centre Running
- Single LRT Platform at Wentworth St

- Note: Illustrations are representative of the Corridor Design in 2019 and are subject to further revision.

LEGEND

| | | | | | | | | | | | | | |
|--|---------------------------|--|------------------------------|--|-----------------------------|--|---------------------------|--|--------------|--|--------------|--|------------------------------|
| | TRAFFIC SIGNAL MAINTAINED | | PEDESTRIAN SIGNAL MAINTAINED | | POTENTIAL PEDESTRIAN SIGNAL | | PEDESTRIAN SIGNAL REMOVED | | LRT GUIDEWAY | | LRT PLATFORM | | SIDESTREET TURN RESTRICTIONS |
|--|---------------------------|--|------------------------------|--|-----------------------------|--|---------------------------|--|--------------|--|--------------|--|------------------------------|

Ward 3 KING STREET (Fairleigh Avenue to Spadina Avenue)



Highlights:

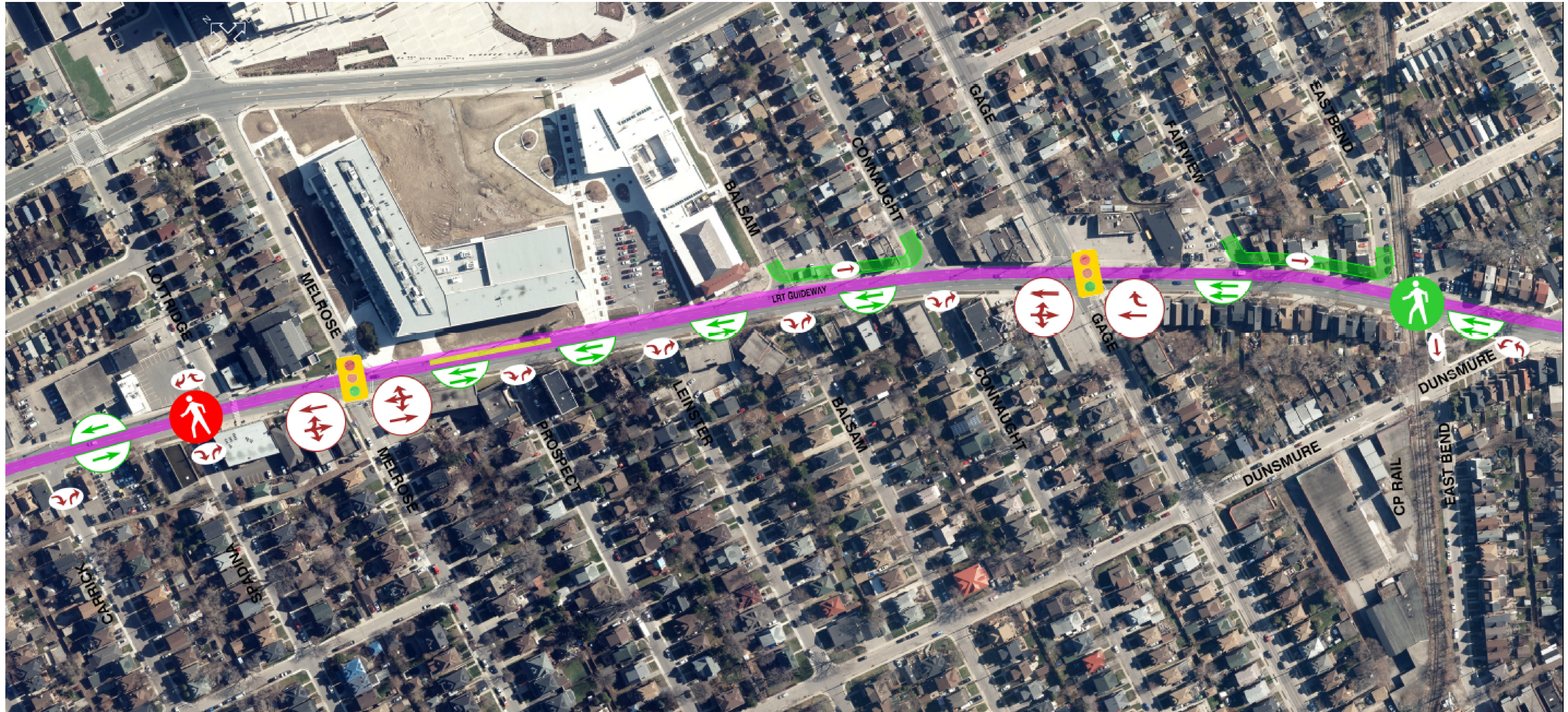
- Guideway is Centre Running
- Single Centre LRT Platform at Sherman Ave

- Note: Illustrations are representative of the Corridor Design in 2019 and are subject to further revision.

LEGEND

| | | | | | | | | | | | | | |
|--|---------------------------|--|------------------------------|--|-----------------------------|--|---------------------------|--|--------------|--|--------------|--|------------------------------|
| | TRAFFIC SIGNAL MAINTAINED | | PEDESTRIAN SIGNAL MAINTAINED | | POTENTIAL PEDESTRIAN SIGNAL | | PEDESTRIAN SIGNAL REMOVED | | LRT GUIDEWAY | | LRT PLATFORM | | SIDESTREET TURN RESTRICTIONS |
|--|---------------------------|--|------------------------------|--|-----------------------------|--|---------------------------|--|--------------|--|--------------|--|------------------------------|

Ward 3 KING STREET (Spadina Avenue to East Bend Avenue)



Highlights:

- Guideway is Side Running (North Side) from The Delta to Gage Ave with Two Westbound Vehicular lanes
- Guideway is Side Running (North Side) from Gage Ave to Melrose Ave with One Westbound and One Eastbound Vehicular lane
- Single LRT Platform at Scott Park
- Scott Park Park adjacent to the north sidewalk provides convenient connectivity to School, Recreation Center, Pool and Tim Hortons Field

- Note: Illustrations are representative of the Corridor Design in 2019 and are subject to further revision.

LEGEND

| | | | | | | | | | | | | | |
|--|---------------------------|--|------------------------------|--|-----------------------------|--|---------------------------|--|--------------|--|--------------|--|------------------------------|
| | TRAFFIC SIGNAL MAINTAINED | | PEDESTRIAN SIGNAL MAINTAINED | | POTENTIAL PEDESTRIAN SIGNAL | | PEDESTRIAN SIGNAL REMOVED | | LRT GUIDEWAY | | LRT PLATFORM | | SIDESTREET TURN RESTRICTIONS |
|--|---------------------------|--|------------------------------|--|-----------------------------|--|---------------------------|--|--------------|--|--------------|--|------------------------------|

Ward 3 KING STREET (East Bend Avenue to The Delta)



Highlights:

- Guideway is Side Running (North Side) from The Delta to Gage Ave with Two Westbound Vehicular Lanes
- Guideway is Centre Running from The Delta easterly
- Single LRT Platform at Gage Park
- Connector Road between Belview/Belmont north of Guideway

- Note: Illustrations are representative of the Corridor Design in 2019 and are subject to further revision.

LEGEND

| | | | | | | |
|---------------------------|------------------------------|-----------------------------|---------------------------|--------------|--------------|------------------------------|
| | | | | | | |
| TRAFFIC SIGNAL MAINTAINED | PEDESTRIAN SIGNAL MAINTAINED | POTENTIAL PEDESTRIAN SIGNAL | PEDESTRIAN SIGNAL REMOVED | LRT GUIDEWAY | LRT PLATFORM | SIDESTREET TURN RESTRICTIONS |

Wards 3 and 4 MAIN STREET (The Delta to Province Street)



Highlights:

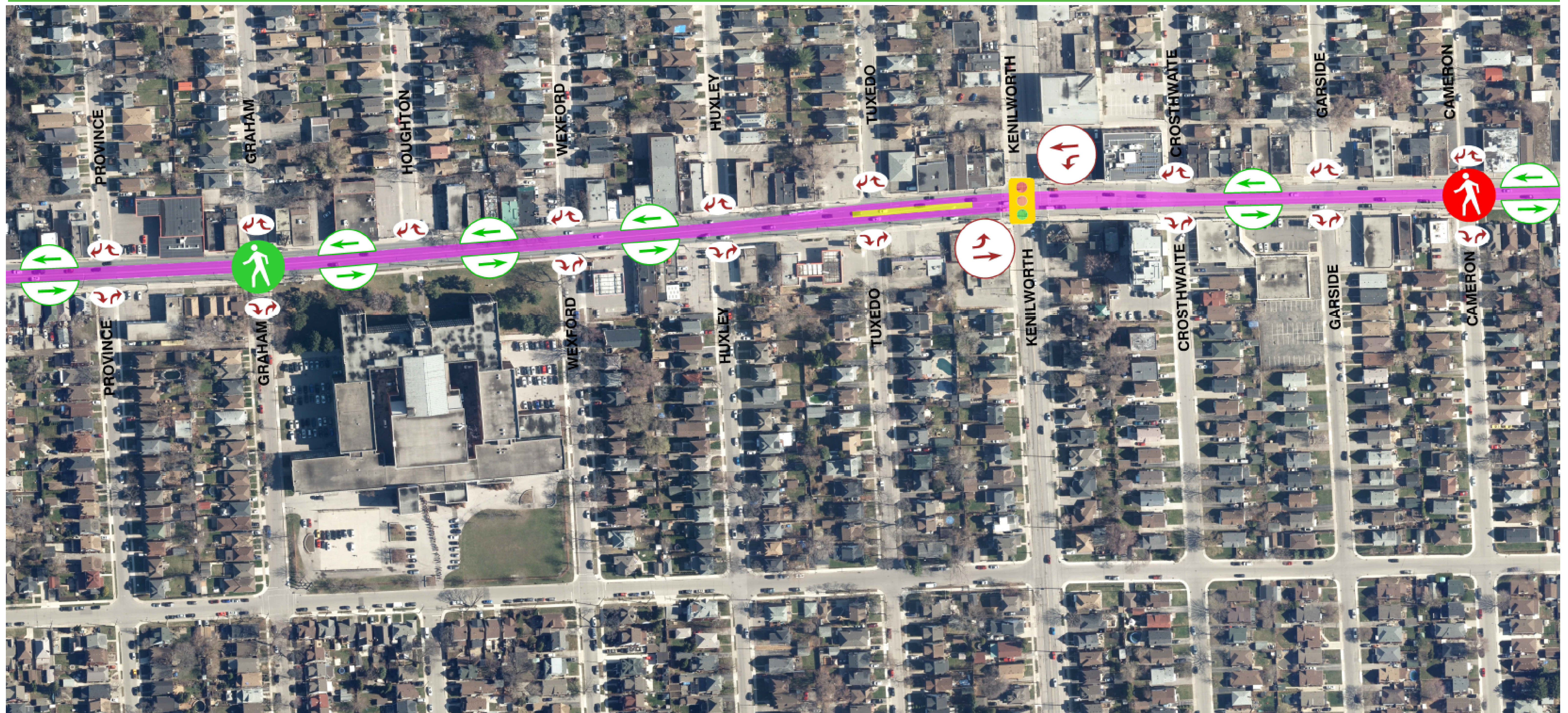
- Guideway is Centre Running from The Delta easterly
- Single Centre LRT Platform at Gage Park
- Single Centre LRT Platform at Ottawa St

- Note: Illustrations are representative of the Corridor Design in 2019 and are subject to further revision.

LEGEND

| | | | | | | |
|---------------------------|------------------------------|-----------------------------|---------------------------|--------------|--------------|------------------------------|
| | | | | | | |
| TRAFFIC SIGNAL MAINTAINED | PEDESTRIAN SIGNAL MAINTAINED | POTENTIAL PEDESTRIAN SIGNAL | PEDESTRIAN SIGNAL REMOVED | LRT GUIDEWAY | LRT PLATFORM | SIDESTREET TURN RESTRICTIONS |

Ward 4 MAIN STREET (Province Street to Cameron Avenue)



Highlights:

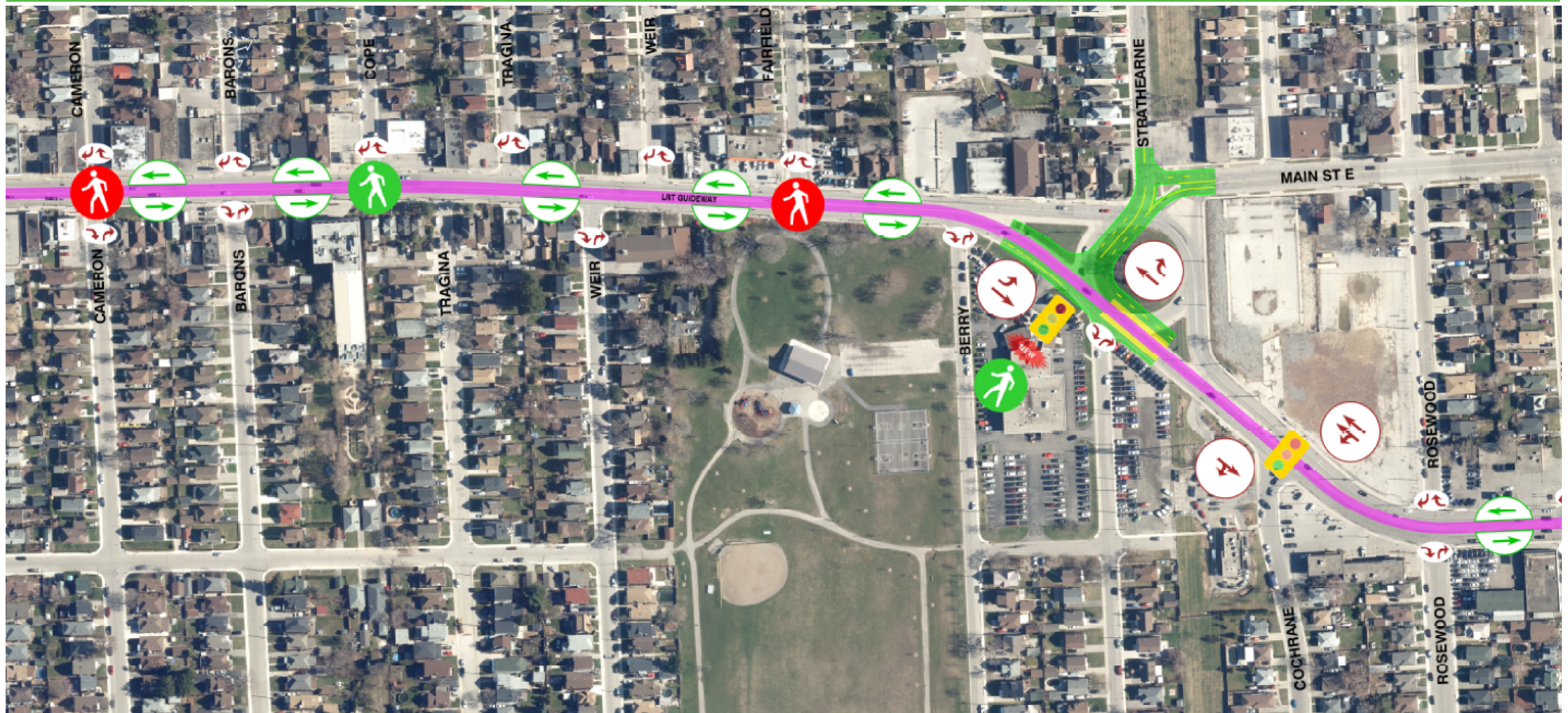
- Guideway is Centre Running
- Single Centre LRT Platform at Kenilworth Ave

- Note: Illustrations are representative of the Corridor Design in 2019 and are subject to further revision.

LEGEND

| | | | | | | | | | | | | | |
|--|---------------------------|--|------------------------------|--|-----------------------------|--|---------------------------|--|--------------|--|--------------|--|------------------------------|
| | TRAFFIC SIGNAL MAINTAINED | | PEDESTRIAN SIGNAL MAINTAINED | | POTENTIAL PEDESTRIAN SIGNAL | | PEDESTRIAN SIGNAL REMOVED | | LRT GUIDEWAY | | LRT PLATFORM | | SIDESTREET TURN RESTRICTIONS |
|--|---------------------------|--|------------------------------|--|-----------------------------|--|---------------------------|--|--------------|--|--------------|--|------------------------------|

Ward 4 MAIN STREET (Cameron Avenue to Rosewood Road)



Highlights:

- Guideway is Centre Running
- Dual LRT Platforms at Queenston Traffic Circle
- Conversion of Traffic Circle to a T-intersection

- Note: Illustrations are representative of the Corridor Design in 2019 and are subject to further revision.

LEGEND

| | | | | | | | | | | | | | |
|--|---------------------------|--|------------------------------|--|-----------------------------|--|---------------------------|--|--------------|--|--------------|--|------------------------------|
| | TRAFFIC SIGNAL MAINTAINED | | PEDESTRIAN SIGNAL MAINTAINED | | POTENTIAL PEDESTRIAN SIGNAL | | PEDESTRIAN SIGNAL REMOVED | | LRT GUIDEWAY | | LRT PLATFORM | | SIDESTREET TURN RESTRICTIONS |
|--|---------------------------|--|------------------------------|--|-----------------------------|--|---------------------------|--|--------------|--|--------------|--|------------------------------|

Ward 4 QUEENSTON ROAD (Rosewood Road to Adair Avenue)



Highlights:

- Guideway is Centre Running
- Dual Side LRT Platforms at Parkdale
- Two Westbound Vehicular lanes east of Parkdale but One Westbound Vehicular lane west of Parkdale to promote use of Parkdale and Arterial Road System

- Note: Illustrations are representative of the Corridor Design in 2019 and are subject to further revision.

LEGEND

| | | | | | | | | | | | | | |
|--|---------------------------|--|------------------------------|--|-----------------------------|--|---------------------------|--|--------------|--|--------------|--|------------------------------|
| | TRAFFIC SIGNAL MAINTAINED | | PEDESTRIAN SIGNAL MAINTAINED | | POTENTIAL PEDESTRIAN SIGNAL | | PEDESTRIAN SIGNAL REMOVED | | LRT GUIDEWAY | | LRT PLATFORM | | SIDESTREET TURN RESTRICTIONS |
|--|---------------------------|--|------------------------------|--|-----------------------------|--|---------------------------|--|--------------|--|--------------|--|------------------------------|

Wards 4 and 5 QUEENSTON ROAD (Adair Avenue to Pottruff Road)



Highlights:

- Guideway is Centre Running

- Note: Illustrations are representative of the Corridor Design in 2019 and are subject to further revision.

LEGEND

| | | | | | | | | | | | | | |
|--|---------------------------|--|------------------------------|--|-----------------------------|--|---------------------------|--|--------------|--|--------------|--|------------------------------|
| | TRAFFIC SIGNAL MAINTAINED | | PEDESTRIAN SIGNAL MAINTAINED | | POTENTIAL PEDESTRIAN SIGNAL | | PEDESTRIAN SIGNAL REMOVED | | LRT GUIDEWAY | | LRT PLATFORM | | SIDESTREET TURN RESTRICTIONS |
|--|---------------------------|--|------------------------------|--|-----------------------------|--|---------------------------|--|--------------|--|--------------|--|------------------------------|

Ward 5 QUEENSTON ROAD (Pottruff Road to Nash Road)



Highlights:

- Guideway is Centre Running
- Dual LRT Platforms at Nash

- Note: Illustrations are representative of the Corridor Design in 2019 and are subject to further revision.

LEGEND

| | | | | | | | | | | | | | |
|--|---------------------------|--|------------------------------|--|-----------------------------|--|---------------------------|--|--------------|--|--------------|--|------------------------------|
| | TRAFFIC SIGNAL MAINTAINED | | PEDESTRIAN SIGNAL MAINTAINED | | POTENTIAL PEDESTRIAN SIGNAL | | PEDESTRIAN SIGNAL REMOVED | | LRT GUIDEWAY | | LRT PLATFORM | | SIDESTREET TURN RESTRICTIONS |
|--|---------------------------|--|------------------------------|--|-----------------------------|--|---------------------------|--|--------------|--|--------------|--|------------------------------|

Ward 5 QUEENSTON ROAD (Nash Road to Centennial Parkway)



Highlights:

- Guideway is Centre Running
- Single Centre LRT Platform at Eastgate Square
- Eastgate Square LRT Stop adjacent to north sidewalk to provide convenient connectivity to Mall

- Note: Illustrations are representative of the Corridor Design in 2019 and are subject to further revision.

LEGEND

| | | | | | | | | | | | | | |
|--|---------------------------|--|------------------------------|--|-----------------------------|--|---------------------------|--|--------------|--|--------------|--|------------------------------|
| | TRAFFIC SIGNAL MAINTAINED | | PEDESTRIAN SIGNAL MAINTAINED | | POTENTIAL PEDESTRIAN SIGNAL | | PEDESTRIAN SIGNAL REMOVED | | LRT GUIDEWAY | | LRT PLATFORM | | SIDESTREET TURN RESTRICTIONS |
|--|---------------------------|--|------------------------------|--|-----------------------------|--|---------------------------|--|--------------|--|--------------|--|------------------------------|