



Sherman Oaks

TUESDAY AUGUST 14, 2012

25T-201105

ZAC-11-031

(PED12101)

WARD 7

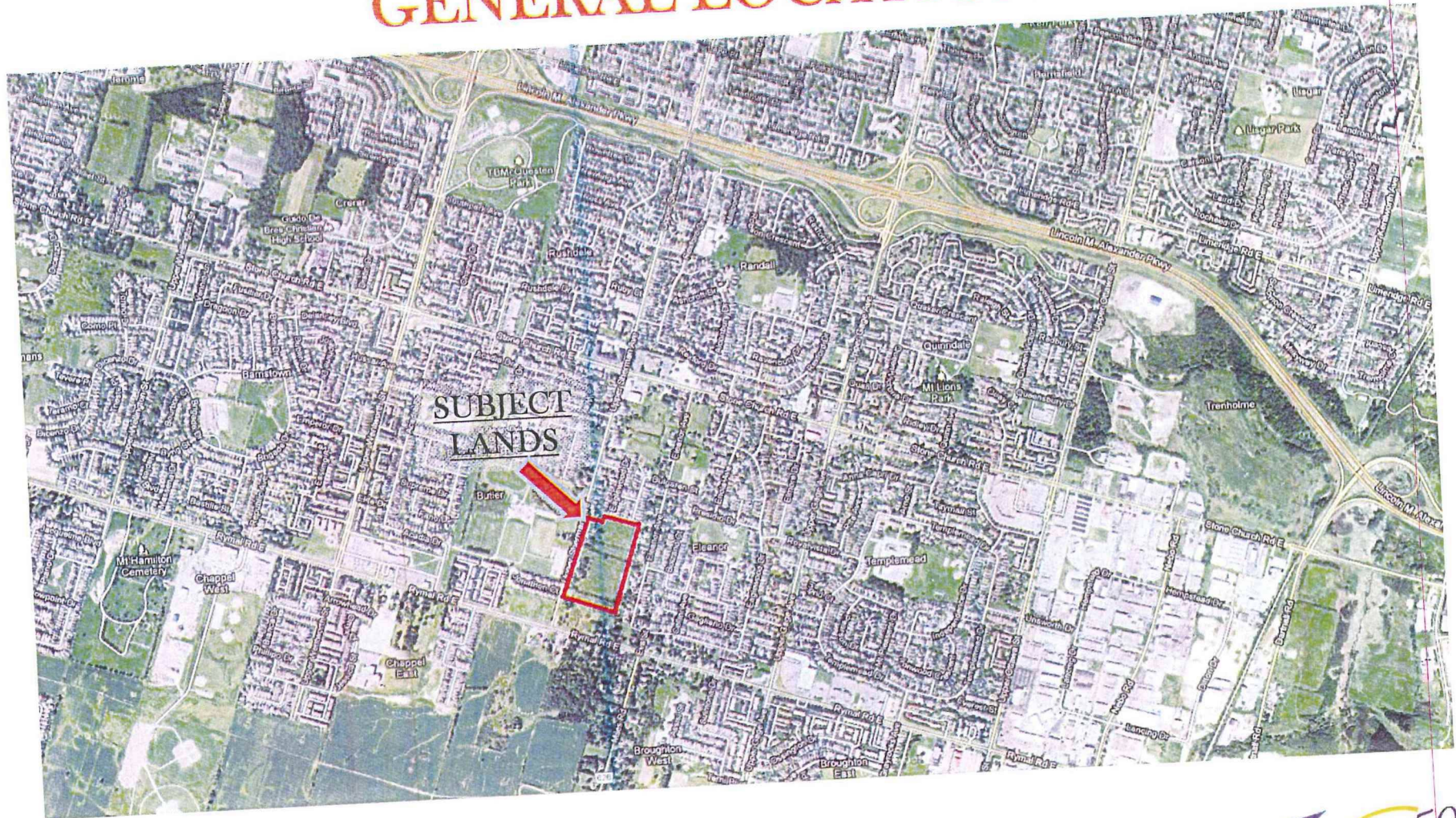
LOSANI
HOMES

ARMSTRONG
HUNTER
& Associates



6.3 (i)

CITY OF HAMILTON GENERAL LOCATION



LOSANI
HOMES

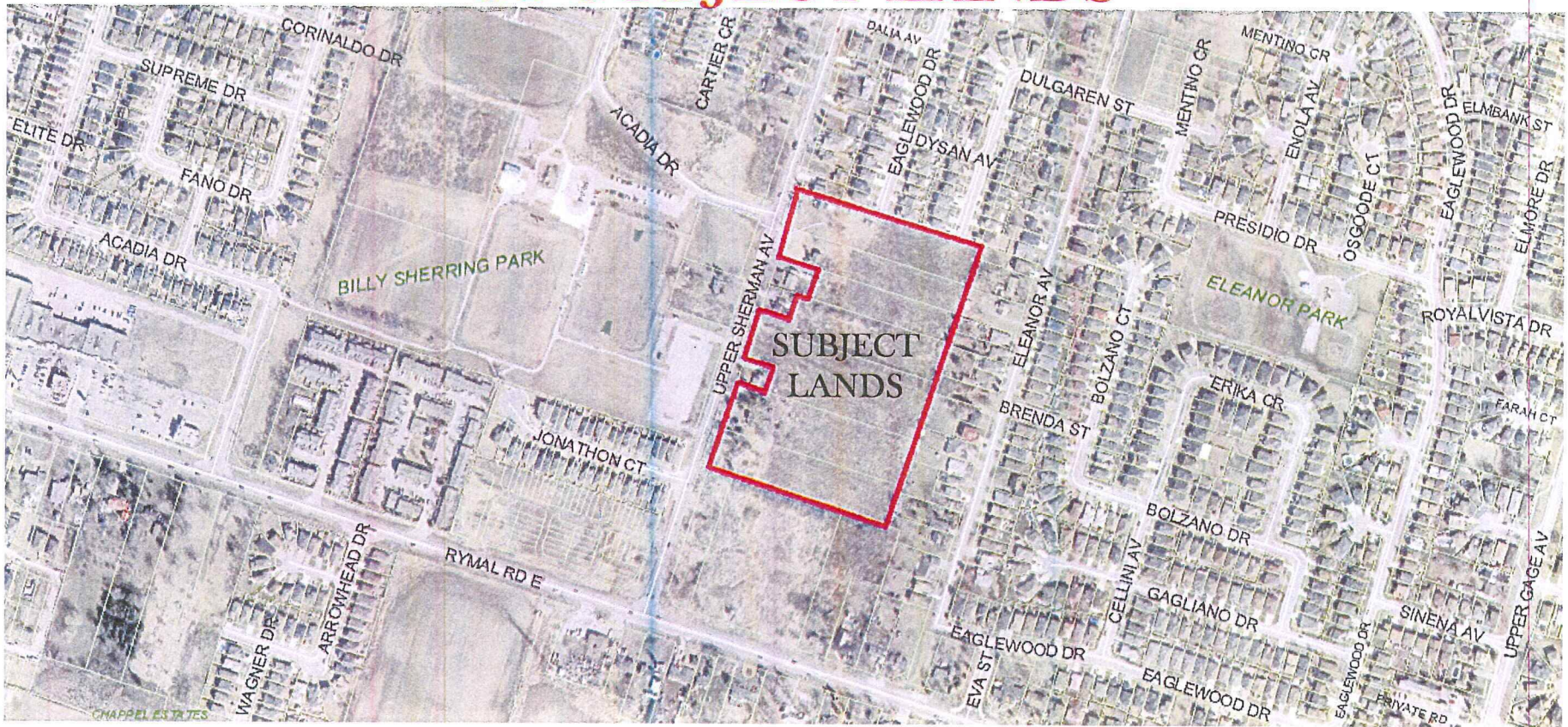
**ARMSTRONG
HUNTER**
& Associates

2



SHERMAN OAKS

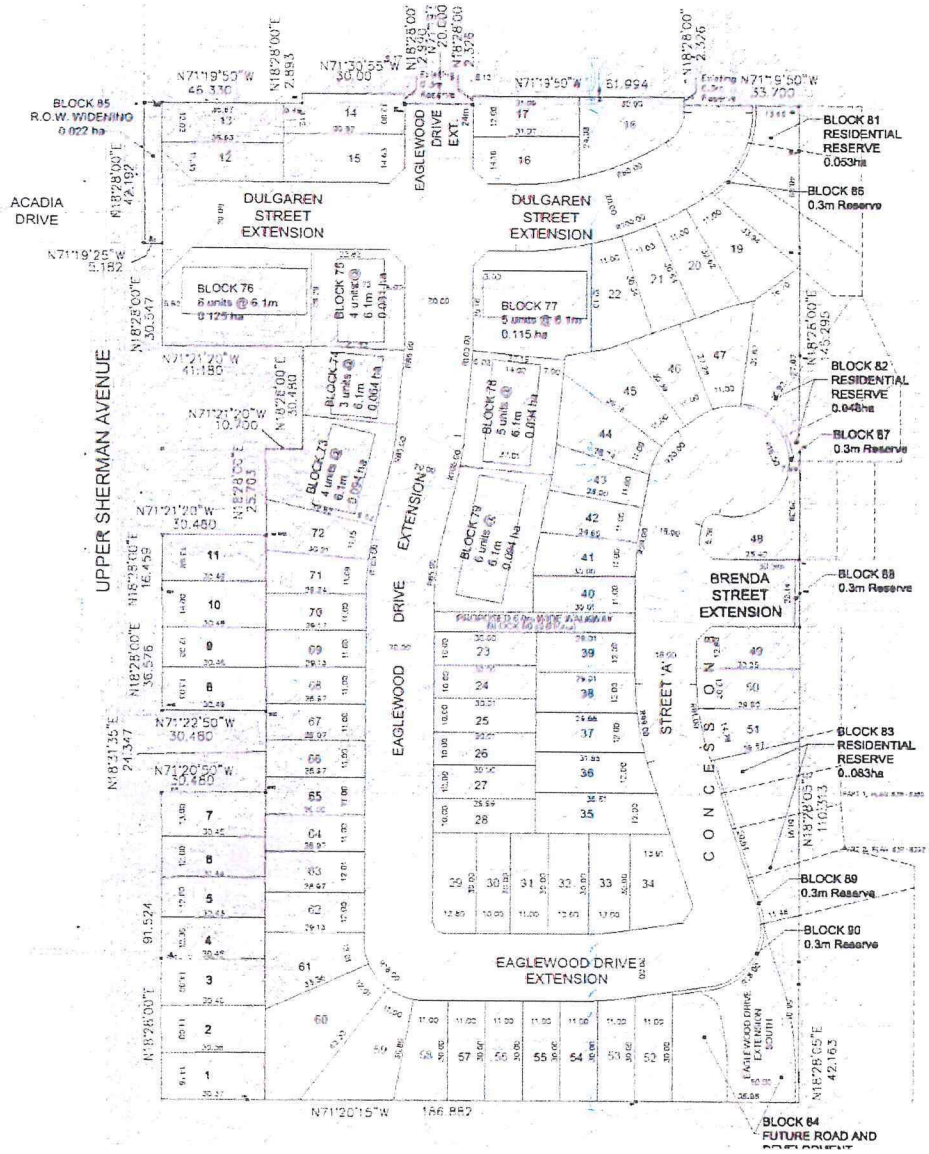
AERIAL PHOTOGRAPH OF SUBJECT LANDS



LOSANI
HOMES

**ARMSTRONG
HUNTER**
& Associates





PROPOSED DRAFT PLAN

TYPE	FRONTAGE (m)	UNITS
Single	10.0	8
Single	11.0	33
Single	12.0	26
Single	14.0	5
Street Townhouse	6.0	33
Total		105

LOSANI
HOMES

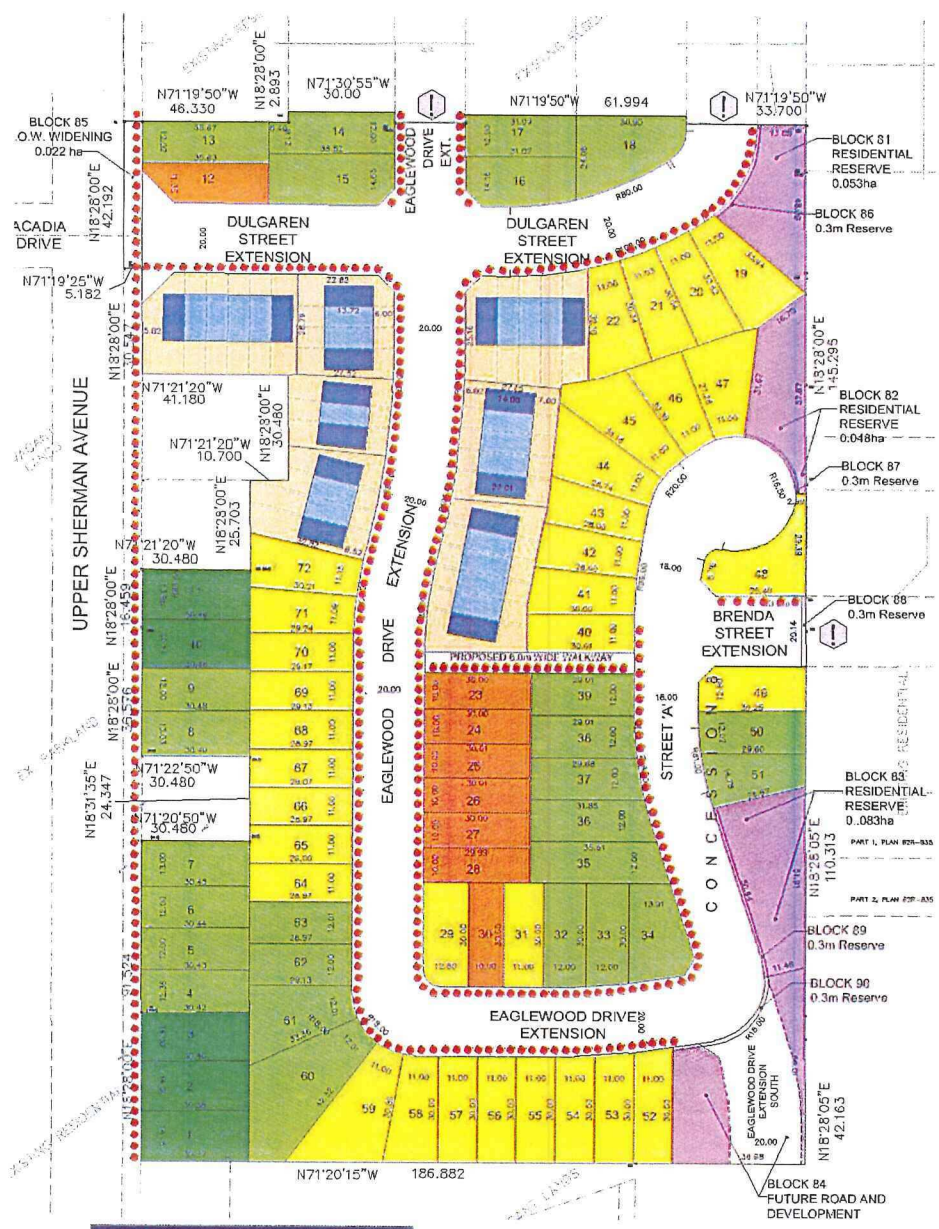
**ARMSTRONG
HUNTER
& Associates**





Sherman Oaks

PROPOSED LOTTING FOR DRAFT PLAN



-  - 10.0m (33ft) SINGLE DETACHED LOTS
-  - 11.0m (36ft) SINGLE DETACHED LOTS
-  - 12.0m (40ft) SINGLE DETACHED LOTS
-  - 14.0m (46ft) SEMI- DETACHED LOTS
-  - FUTURE DEVELOPMENT BLOCKS
(±15 SINGLE DETACHED LOTS)
-  - 6.0m (20ft) EXT. STREET TOWNHOUSE
-  - 6.0m (20ft) INT. STREET TOWNHOUSE
-  - MUNICIPAL SIDEWALKS & PATHWAY
-  - NO CONSTRUCTION ACCESS

LOSANI
HOMES

ARMSTRONG
HUNTER
& Associates

5

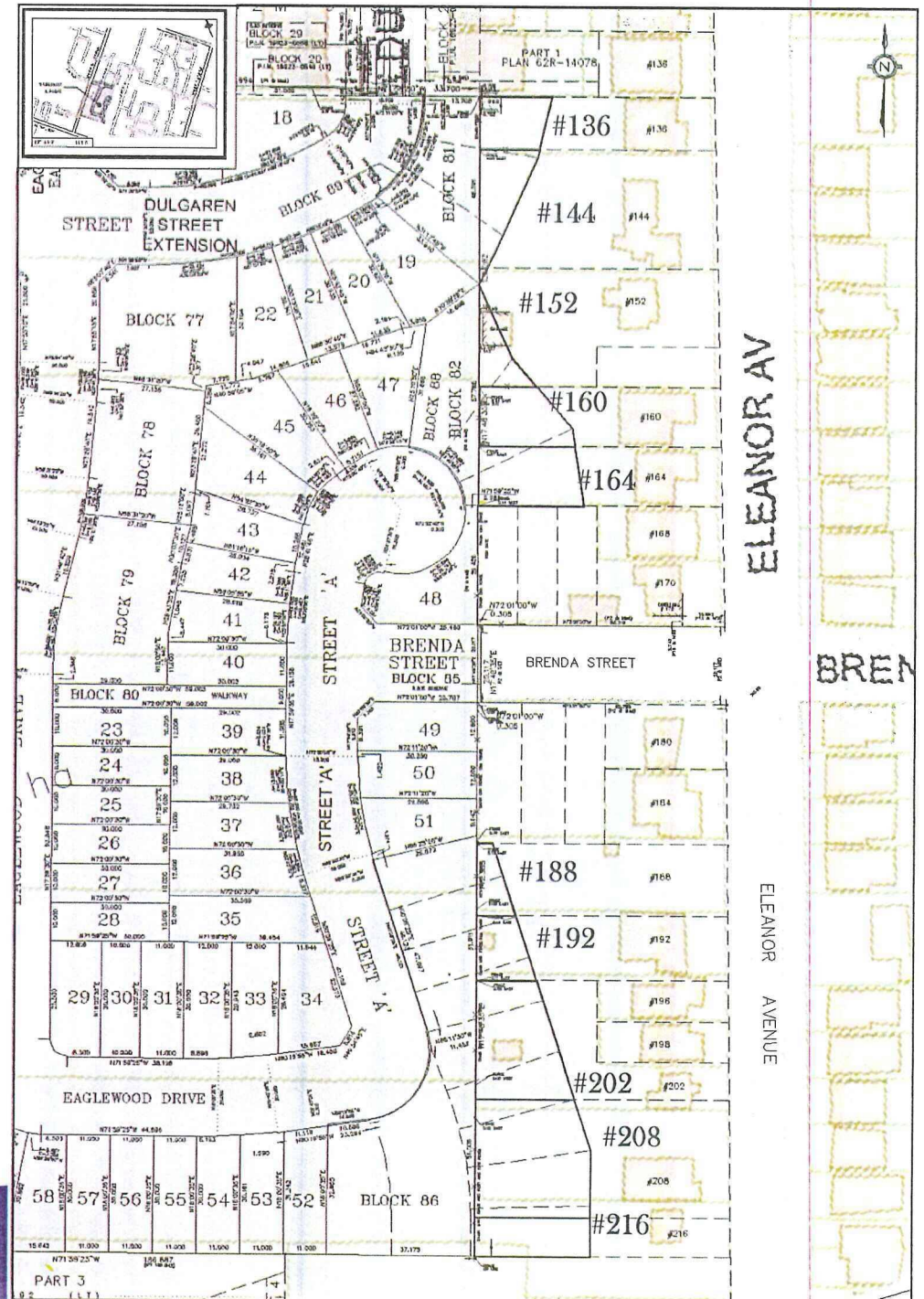


SHERMAN OAKS

FUTURE LOTTING OF ADJACENT PROPERTIES ON ELEANOR AVENUE

MUNICIPAL ADDRESSES WITH DEVELOPMENT POTENTIAL

- #136
- #144
- #152
- #160
- #164
- #188
- #192
- #202
- #208
- #216



LOSANI
HOMES

**ARMSTRONG
HUNTER**
& Associates

FUTURE LOTTING & EXTENSION OF EAGLEWOOD DRIVE TO ELEANOR AVENUE

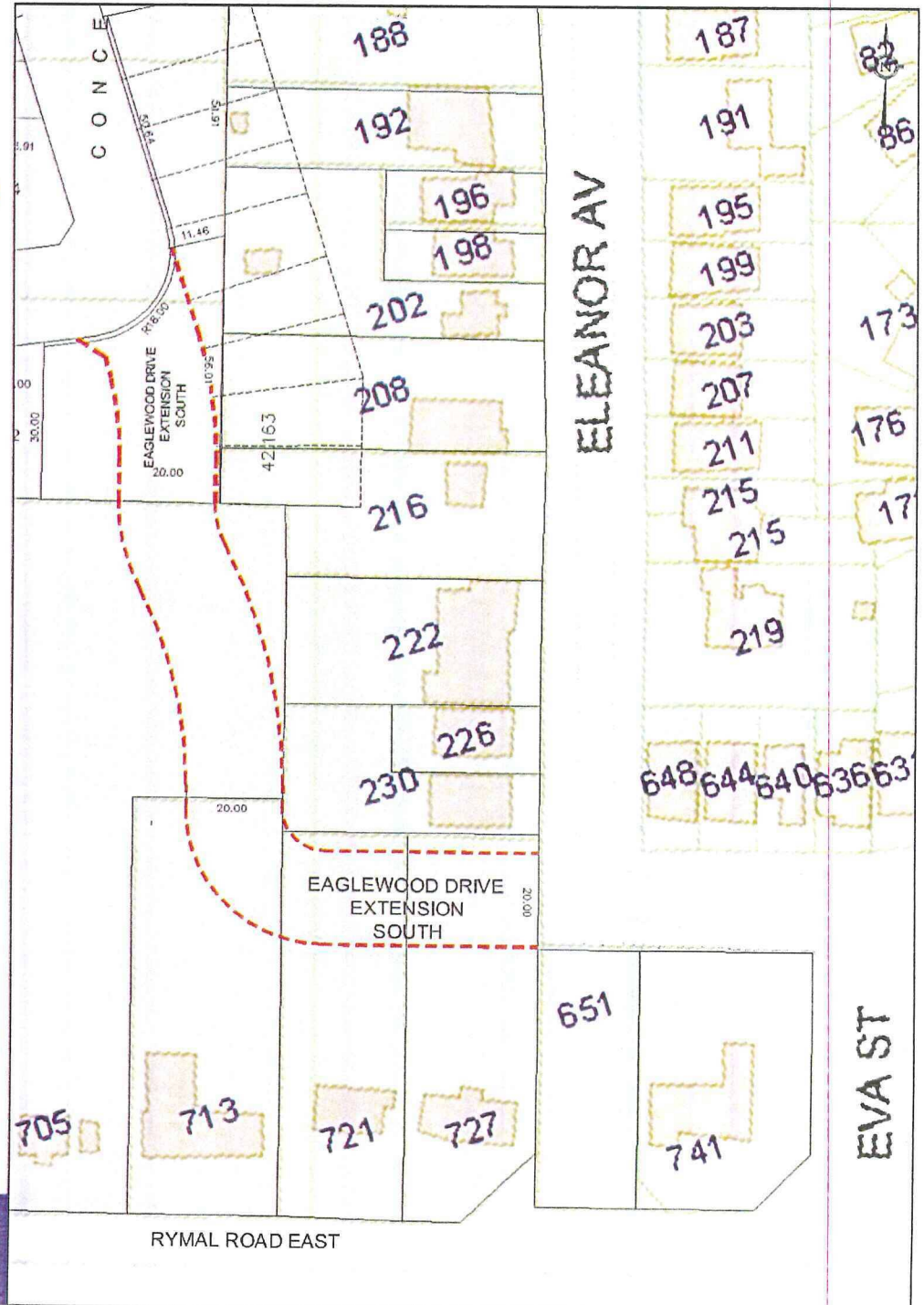
MUNICIPAL ADDRESSES WITH DEVELOPMENT POTENTIAL

ELEANOR AVENUE

- #202
- #208
- #216
- #222
- #230

RYMAL ROAD EAST

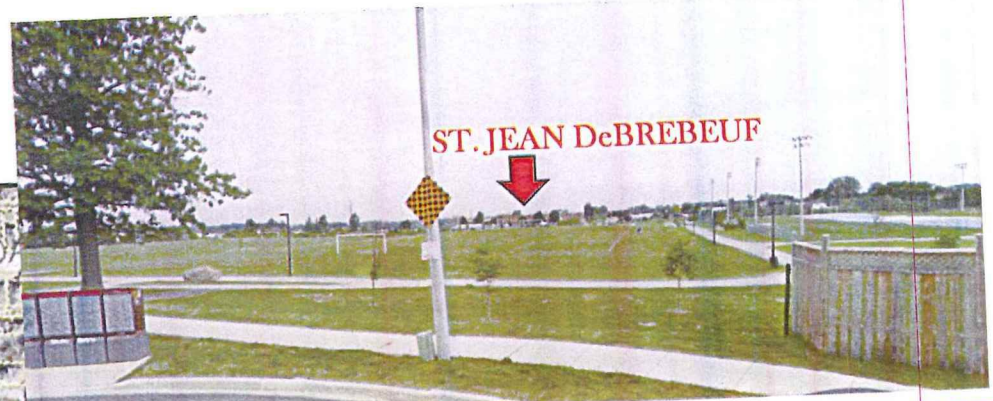
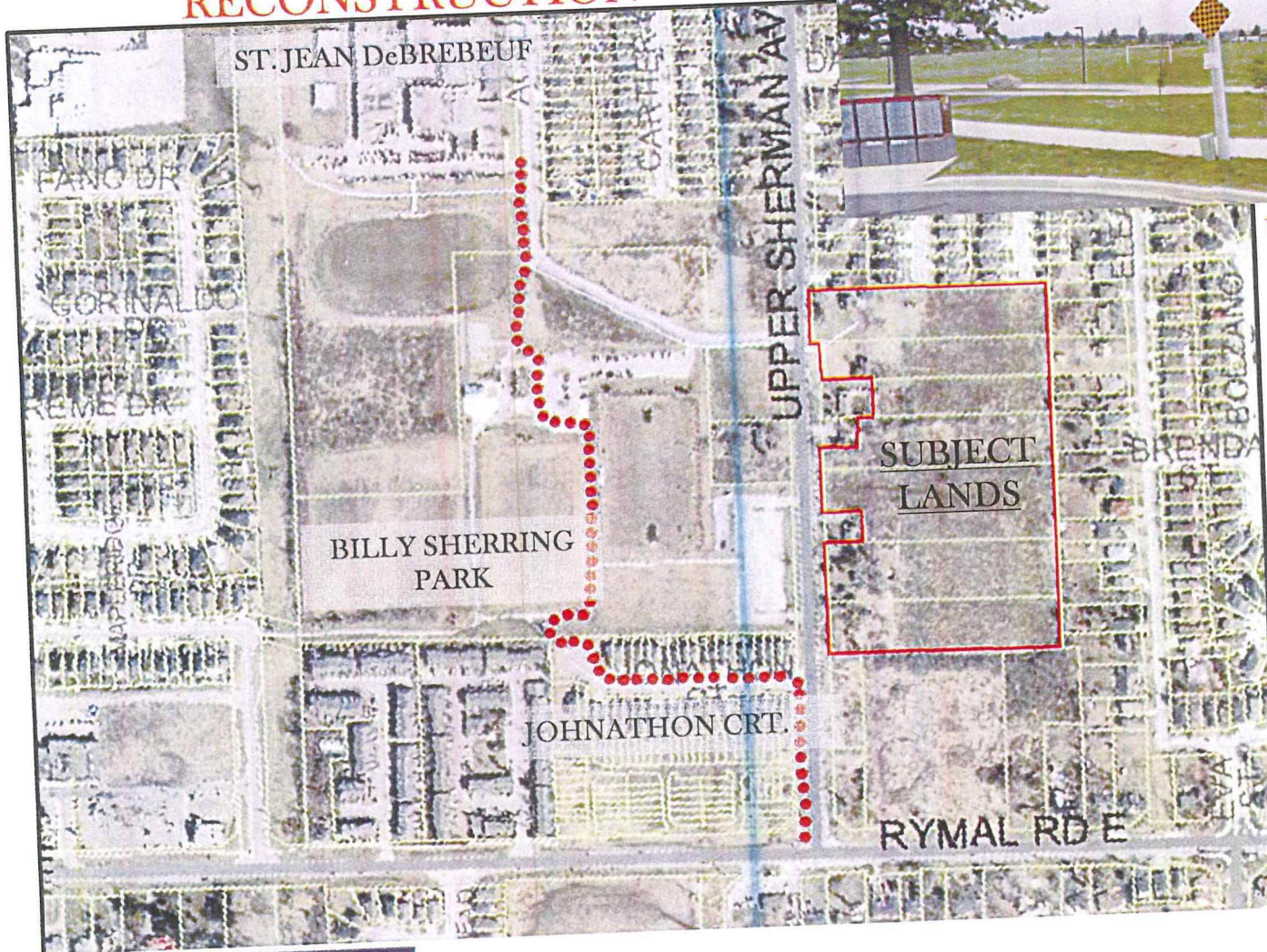
- #705
- #713
- #721
- #727



LOSANI
HOMES

**ARMSTRONG
HUNTER**
& Associates

TEMPORARY STUDENT PATH DURING UPPER SHERMAN RECONSTRUCTION



ST. JEAN DeBREBEUF

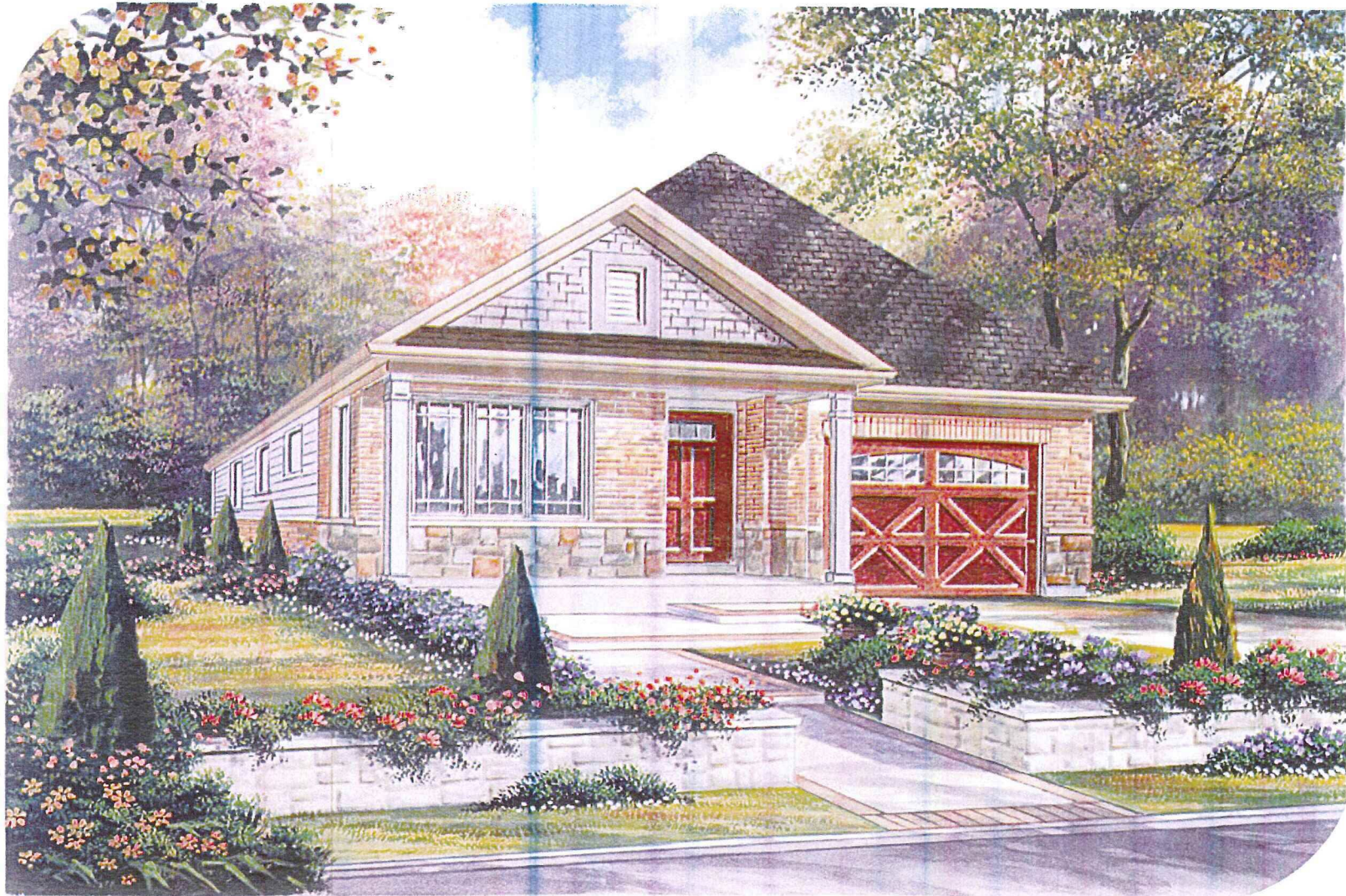
VIEW FROM JOHNATHON COURT
TO ST. JEAN DeBREBEUF
VIA PATH
AT BILLY SHERRING PARK

LOSANI
HOMES

ARMSTRONG
HUNTER
& Associates



EXAMPLE OF 33'(10m) BUNGALOW PRODUCT



LOSANI
HOMES

ARMSTRONG
HUNTER
& Associates



EXAMPLE OF 36'(11m) 2 STOREY PRODUCT



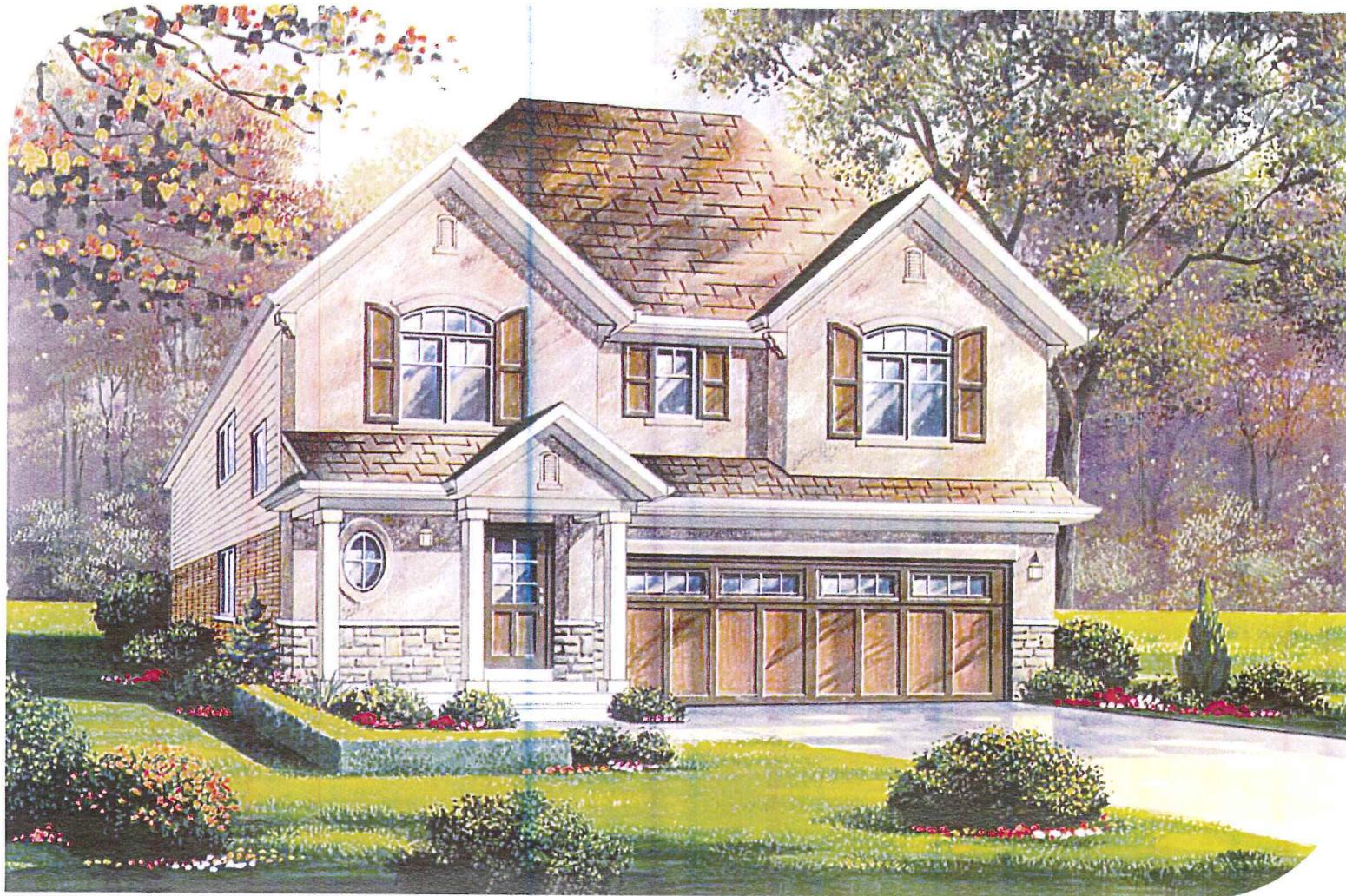
LOSANI
HOMES

**ARMSTRONG
HUNTER**
& Associates

10



EXAMPLE OF 36'(11m) 2 STOREY PRODUCT



LOSANI
HOMES

ARMSTRONG
HUNTER
& Associates

11



EXAMPLE OF 40'(12m) 2 STOREY PRODUCT



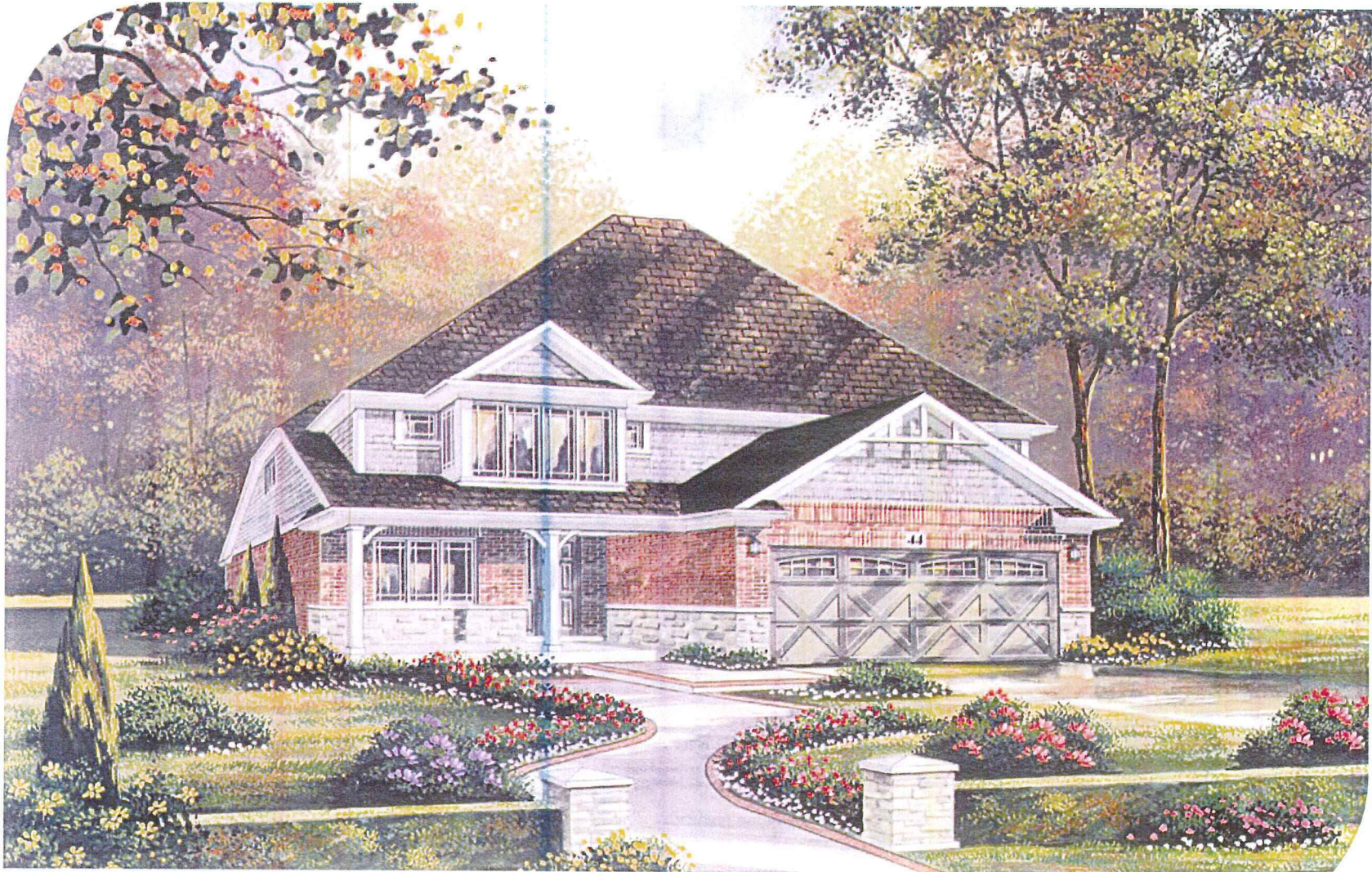
LOSANI
HOMES

ARMSTRONG
HUNTER
& Associates

12



EXAMPLE OF 46'(14m) 2 STOREY PRODUCT



LOSANI
HOMES

ARMSTRONG
HUNTER
& Associates

13



EXAMPLE OF 6.0m (20') STREET TOWNHOUSES



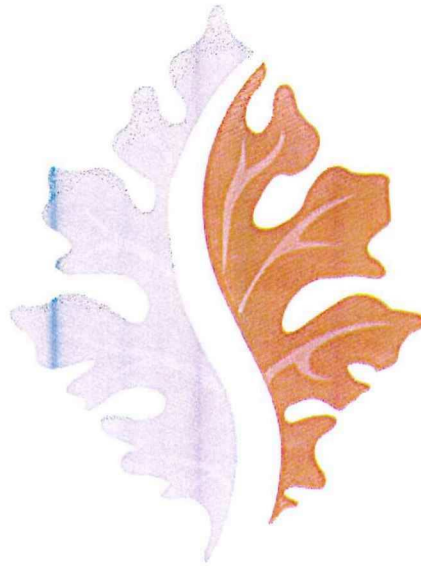
PROPOSED FOR UNITS ON
DULGAREN STREET & EAGLEWOOD DRIVE EXT.

LOSANI
HOMES

ARMSTRONG
HUNTER
& Associates

14





Sherman Oaks

TUESDAY AUGUST 14, 2012

25T-201105

ZAC-11-031

(PED12101)

WARD 7

LOSANI
HOMES

ARMSTRONG
HUNTER
& Associates

15

