



**CITY OF HAMILTON**

**PUBLIC WORKS DEPARTMENT  
Operations Division**

<b>TO:</b> Chair and Members Public Works Committee	<b>WARD(S) AFFECTED:</b> Wards 2, 3, 4 & 5
<b>COMMITTEE DATE:</b> September 3, 2013	
<b>SUBJECT/REPORT NO:</b> Street Sweeping Service Level Adjustment - Burlington Street Industrial Zone Neighbourhoods (PW13055) - (Wards 2, 3, 4 and 5) (Outstanding Business List)	
<b>SUBMITTED BY:</b> Gerry Davis, CMA General Manager Public Works Department	<b>PREPARED BY:</b> Bryan Shynal, B.Sc.; B.L.A. (905) 546-2424, Extension 4622
<b>SIGNATURE:</b>	

**RECOMMENDATION**

- (a) That a Street Sweeping Program enhancement be referred to the 2014 budget deliberation to address corresponding budget requirements for the service level increase to the Industrial Zone Neighbourhoods as recommended in Report PW13055;
- (b) That the Outstanding Business Item referring to increased street sweeping in industrial and surrounding residential areas be identified as completed and removed from the Public Works Committee Outstanding Business List.

**EXECUTIVE SUMMARY**

At the April 22, 2013, meeting of the Public Works Committee, staff was asked to investigate and report on the feasibility of increased street sweeping in residential areas immediately surrounding the Burlington Street industrial zone.

Staff has reviewed its operations and concludes that the implementation of a street sweeping service enhancement in the affected residential areas is in fact feasible and the associated budget requirements and operational considerations are outlined within this report.

**Alternatives for Consideration - See Page 3**

**SUBJECT: Street Sweeping Service Level Adjustment - Burlington Street  
Industrial Zone Neighbourhoods  
(PW13055) - (Wards 2, 3, 4 and 5) - Page 2 of 4**

---

**FINANCIAL / STAFFING / LEGAL IMPLICATIONS**

The budget estimates for the “recommended” and “alternative” service areas reflect a full season of operation (*April 1<sup>st</sup> to November 1<sup>st</sup>*) and the double shifting of a portion of the sweeper fleet as follows:

<b><u>Option</u></b>	<b><u>Budget</u></b>	<b><u>FTE</u></b>
Recommended Service Area <i>Appendix C to Report PW13055</i>	\$19,300	0.2
Alternative Service Area <i>Appendix D to Report PW13055</i>	\$66,350	0.6

The budget estimates include costs for additional staff (sweeper operators), fuel and equipment maintenance.

**HISTORICAL BACKGROUND**

The current street sweeping program services roadways City wide on a tiered “service level” as outlined in Appendix A to Report PW13055 and reflects a higher frequency of service to residential streets within and around the industrial zone (*once/month versus once/every two months elsewhere*).

Sweeping service to main roads within the Burlington Street Industrial Zone was enhanced to a frequency of three cycles/week through a budget approval in 2007.

At the April 22, 2013, meeting of the Public Works Committee, staff was directed to investigate and report on the feasibility of increasing the current street sweeping service level of one cycle/month in residential areas immediately surrounding the Burlington Street industrial zone.

**POLICY IMPLICATIONS/LEGISLATED REQUIREMENTS**

N/A

**RELEVANT CONSULTATION**

Operations Division staff.

**ANALYSIS / RATIONALE FOR RECOMMENDATION**

Field observations confirm that the impacts of fugitive airborne dust from the Burlington Street industrial zone do not appear to be fully mitigated by the current sweeping service level within surrounding neighbourhoods and that further enhancements may be beneficial. Staff propose an increase in sweeping frequency from one to three cycles

**SUBJECT: Street Sweeping Service Level Adjustment - Burlington Street  
Industrial Zone Neighbourhoods  
(PW13055) - (Wards 2, 3, 4 and 5) - Page 3 of 4**

---

per month within surrounding neighbourhoods to ensure comparable similar service outcomes as achieved in neighbourhoods elsewhere in the City. Based on visual observations, staff has recommended an enhancement *service area* as illustrated within Appendix B of Report PW13055 that identifies Barton Street as its southerly boundary. Given the lack of available objective data, an alternative and expanded enhancement service area using Main Street as a southerly boundary is provided for consideration.

Budget estimates for each of the *service areas* are provided within the financial section and are predicated on the same *service level* of three cycles per month. The operational plan for the enhancement relies on the double shifting of portions of the existing sweeper fleet and alterations to sweeping routes and schedules overall to ensure that the additional service is provided during weekday/daytime periods thus minimizing service quality impacts (parked cars) and the potential for noise complaints.

### **ALTERNATIVES FOR CONSIDERATION**

As an alternative an expanded enhancement service area using Main Street as a southerly boundary is provided for consideration. Budget estimates for each are provided within the financial section and are predicated on the same service level of three cycles per month.

### **ALIGNMENT TO THE 2012 - 2015 STRATEGIC PLAN**

#### **Strategic Priority #1**

A Prosperous & Healthy Community

*WE enhance our image, economy and well-being by demonstrating that Hamilton is a great place to live, work, play and learn.*

#### **Strategic Objective**

- 1.1 Continue to grow the non-residential tax base.
- 1.2 Continue to prioritize capital infrastructure projects to support managed growth and optimize community benefit.
- 1.3 Promote economic opportunities with a focus on Hamilton's downtown core, all downtown areas and waterfronts.
- 1.4 Improve the City's transportation system to support multi-modal mobility and encourage inter-regional connections.
- 1.5 Support the development and implementation of neighbourhood and City wide strategies that will improve the health and well-being of residents.
- 1.6 Enhance Overall Sustainability (financial, economic, social and environmental).

#### **Strategic Priority #2**

Valued & Sustainable Services

*WE deliver high quality services that meet citizen needs and expectations, in a cost effective and responsible manner.*

**SUBJECT: Street Sweeping Service Level Adjustment - Burlington Street  
Industrial Zone Neighbourhoods  
(PW13055) - (Wards 2, 3, 4 and 5) - Page 4 of 4**

---

**Strategic Objective**

- 2.1 Implement processes to improve services, leverage technology and validate cost effectiveness and efficiencies across the Corporation.
- 2.2 Improve the City's approach to engaging and informing citizens and stakeholders.
- 2.3 Enhance customer service satisfaction.

**APPENDICES / SCHEDULES**

- Appendix A: Street Sweeping Service Schedule
- Appendix B: Current Sweeping Service Level
- Appendix C: Recommended Service Area - Sweeping Level
- Appendix D: Alternative Service Area - Sweeping Level

City of Hamilton Public Works Department

Road Operations & Maintenance

2004 Mechanical Sweeping Program /Service Schedule

District/Location	Road/Street Class	Active Sweepers per District	Spring Clean-Up April 1 <sup>st</sup> -June 1 <sup>st</sup>	Weekly	Monthly (minimum)	Bi-Monthly (minimum)	As Needed Basis
#1 Dundas, Flamborough, Waterdown, Lower West Hamilton	1	2 in-house 2 contracted	*		*		*
	2		*			*	*
	3 urban		*			*	
	3 rural		Intersections				*
#2 Ancaster, Upper West Hamilton	1	2 in-house 1 contracted	*		*		*
	2		*			*	*
	3 urban		*			*	
	3 rural		Intersections				*
#3 Lower, Central Hamilton	1	5 in-house	*	*			
	2		*		*		*
	3 urban		*		*		
Downtown Core			Class 1 -Nightly		Class 2 -Weekly		*
#4 Hamilton Mountain, West Glanbrook	1	3 in-house	*		*		*
	2		*		*		*
	3 urban		*			*	*
	3 rural		Intersections				*
#5 Lower East Hamilton, Upper & Lower Stoney Creek, East Glanbrook	1	2 in-house	*		*		*
	2		*			*	*
	3 urban		*			*	
	3 rural		Intersections				*
<b>Rural Intersection Sweeping</b>		Rural intersections are monitored on a regular basis for the presence of loose granular on paved surfaces. Loose top surfaces that may intersect with paved surfaces will often develop a similar condition (known as granular float). These locations and conditions are swept on an "as needed basis".					

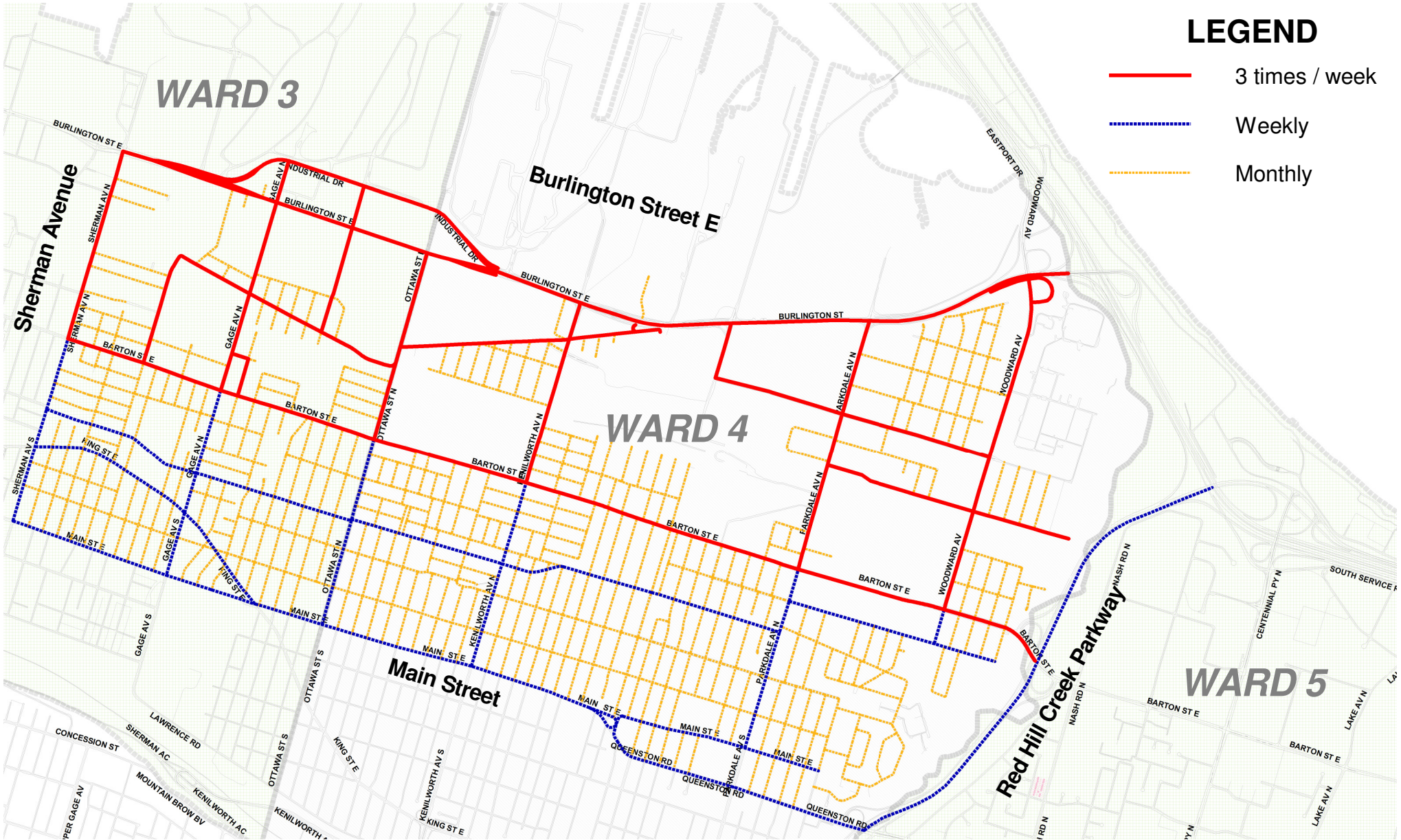
# Street Sweeping Industrial Zone Neighbourhoods

## Current Sweeping Service Level

APPENDIX B  
REPORT PW13055

### LEGEND

- 3 times / week
- ⋯ Weekly
- ⋯ Monthly



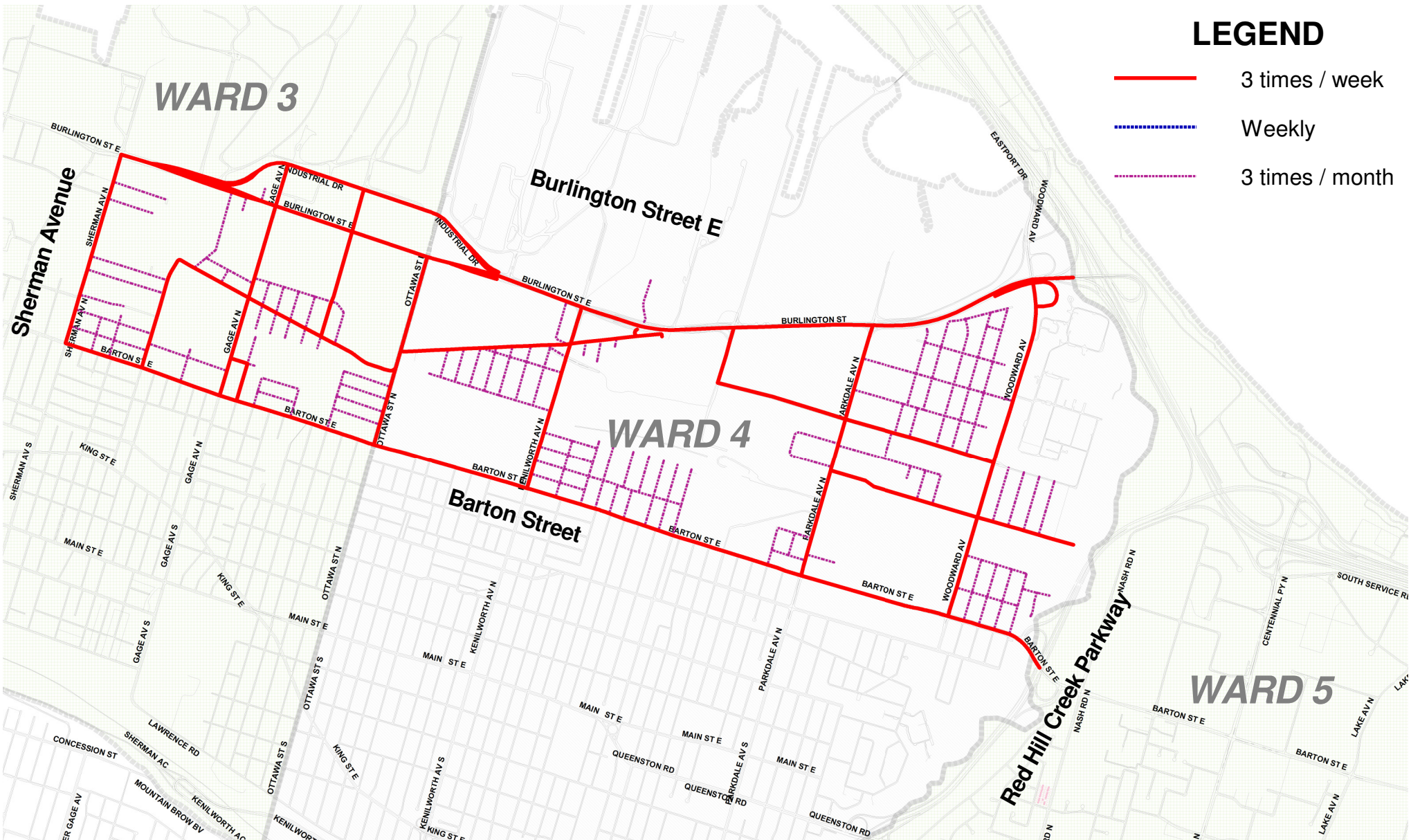
# Street Sweeping Industrial Zone Neighbourhoods

## Recommended Service Area - Sweeping Level

APPENDIX C  
REPORT PW13055

### LEGEND

-  3 times / week
-  Weekly
-  3 times / month



# Street Sweeping Industrial Zone Neighbourhoods

## Alternative Service Area - Sweeping Level

APPENDIX D  
REPORT PW13055

### LEGEND

-  3 times / week
-  Weekly
-  3 times / month

