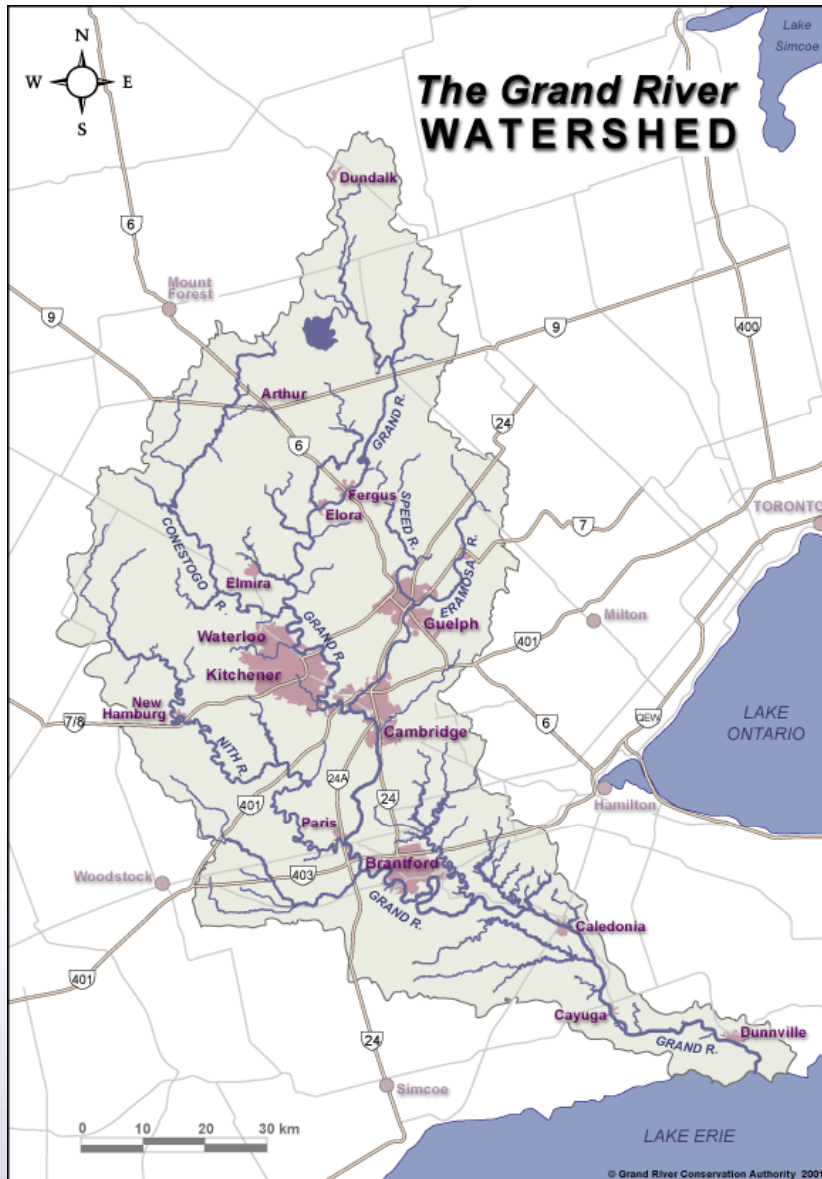


# Grand River Conservation Authority 2014 Draft Budget

City of Hamilton – Jan. 23, 2014

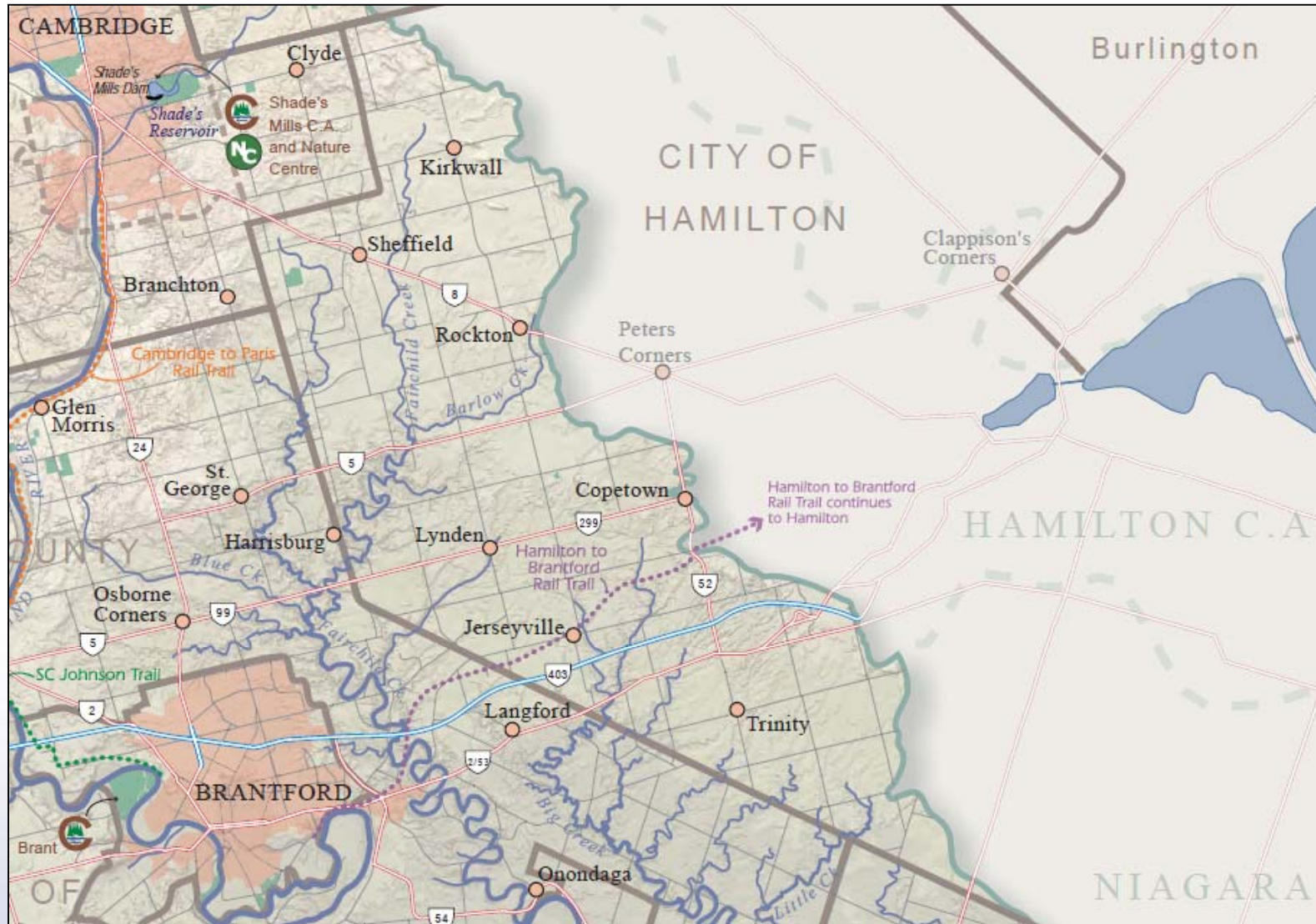


# About the watershed



- Largest watershed in Southern Ontario
- 300 km long from Dundalk to Lake Erie
- Major tributaries: Conestogo, Speed, Eramosa, Nith
- Population: 985,000
- Rich agricultural region

# About the watershed



# Watershed issues

- **Watershed population growing rapidly**
  - rising 25% by 2031 to reach 1.2 million
- **Extensive agriculture**
  - 70% of land is farmed; factor in water quality
- **Climate change could have major impact**
  - More extreme events, e.g. floods, drought



# Water Management Plan

---



- **New water management plan addresses issues:**
  - Ensure sustainable water supplies
  - Reduce flood damage potential
  - Improve water quality
  - Build resiliency to deal with climate change
- **Participating partners:**
  - GRCA, municipalities, Canada, Ontario, First Nations
  - Ontario covering 50% of cost with grant of \$903,000
- **Draft plan completed September 2013**
- **Seeking municipal endorsement in 2014**

# GRCA Strategic Plan



## Objectives:

1. Protect life and minimize property damage
2. Improve watershed health
3. Connect people with the environment
4. Organizational focus on teamwork, development and engagement
5. Deliver value and innovation



# 2014 budget issues

---



- **Demand for GRCA services remains high**
  - Responding to climate change
  - Population growth
- **Forestry issues**
  - Emerald ash borer: estimate for 2014 = \$900,000
  - Ice storm damage: \$250,000+
- **Provincial grants cut**
  - Operating grants reduced by \$80,000 (8.5%) in 2012
  - Source Protection funding winding down
- **GRCA Conservation Areas revenue**
  - Cool wet weather in 2013 lowered revenue

# Response to budget issues



- **Managing staff costs**
  - net reduction of 2.5 positions
  - other savings due to gaps in service
- **Emerald Ash Borer**
  - asking MNR approval to use reserves to fund expenses
- **Hydro Development**
  - Three existing sites @ Shand, Conestogo, Guelph dams
  - Fourth site possible in Cambridge: \$600,000 in revenue
- **Conestogo Dam spillway project**
  - working with province to reduce size and cost of project
- **Major fundraising campaign underway**
  - ‘Your River, Your Life’ supports key projects to reduce impact on levy, e.g. trails, restoration projects



# Grand River Conservation Authority Budget 2014 Timetable

---



## Five Year Plan

- ✓ July 26, 2013      Five Year Forecast, General Membership
- ✓ Oct-Dec, 2013      Meet with Municipal Staff as required

## 2014 Budget

- ✓ Sept 12, 2013      Special Budget Meeting, General Membership
- ✓ Nov 29, 2013      First Draft, General Membership
- Jan 24, 2014      Second Draft, General Membership
- Jan 28, 2014      Municipalities advised of Meeting Date for Budget Approval
- Feb 28, 2014      Third Draft & Board Approval, 2014 Budget & Levy (AGM)

*(Presentations to municipal councils between Oct 2013 and Feb 2014 as required)*

# Budget overview

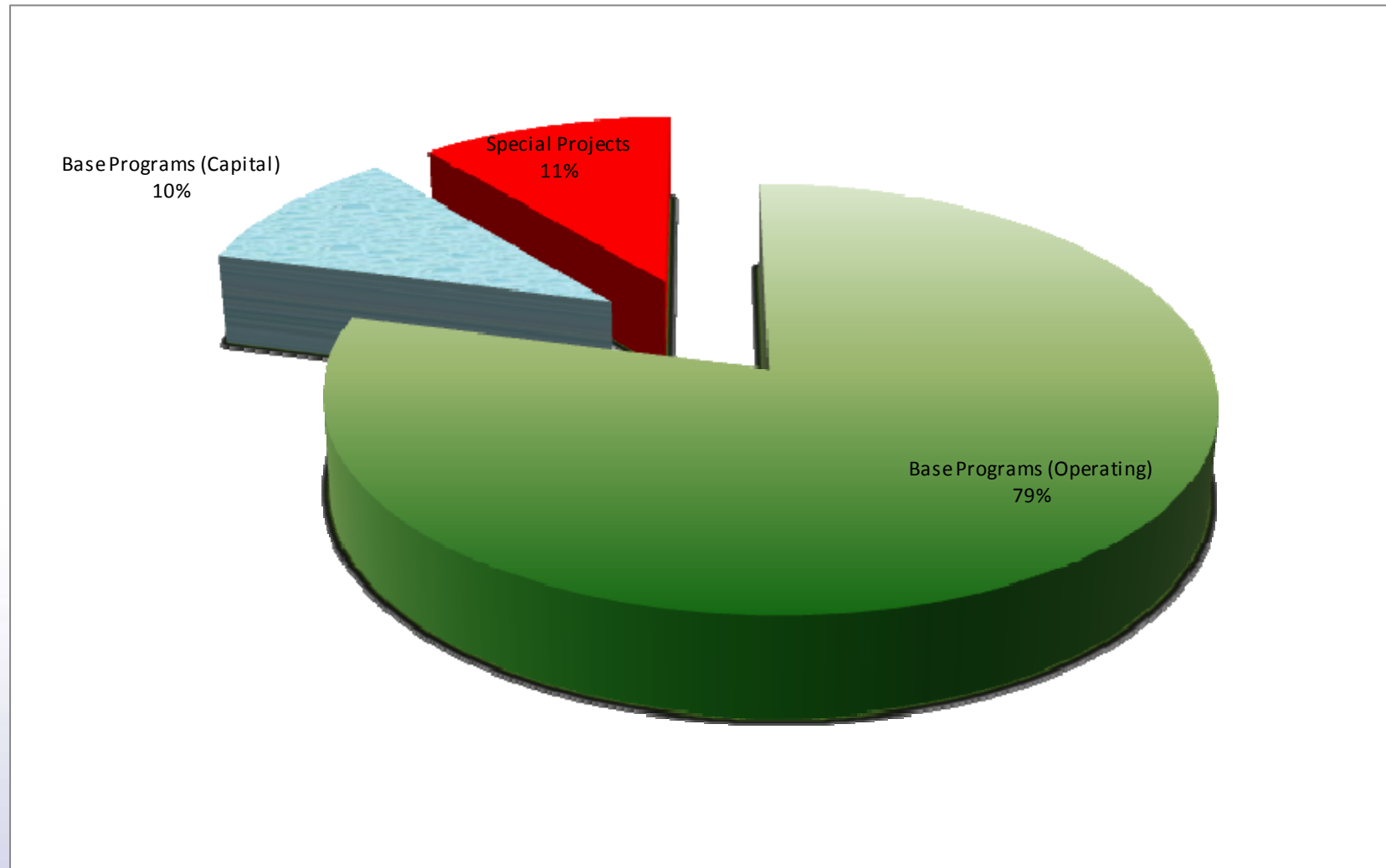
- **2014 expenditures: \$28.1 million**
  - Down from \$30.5 million in 2013
- **Municipal dollars highly leveraged**
  - \$1 in municipal levy matched by \$2 from other sources
- **Per capita municipal levy: \$10.45**





# 2014 Budget - Expenditures

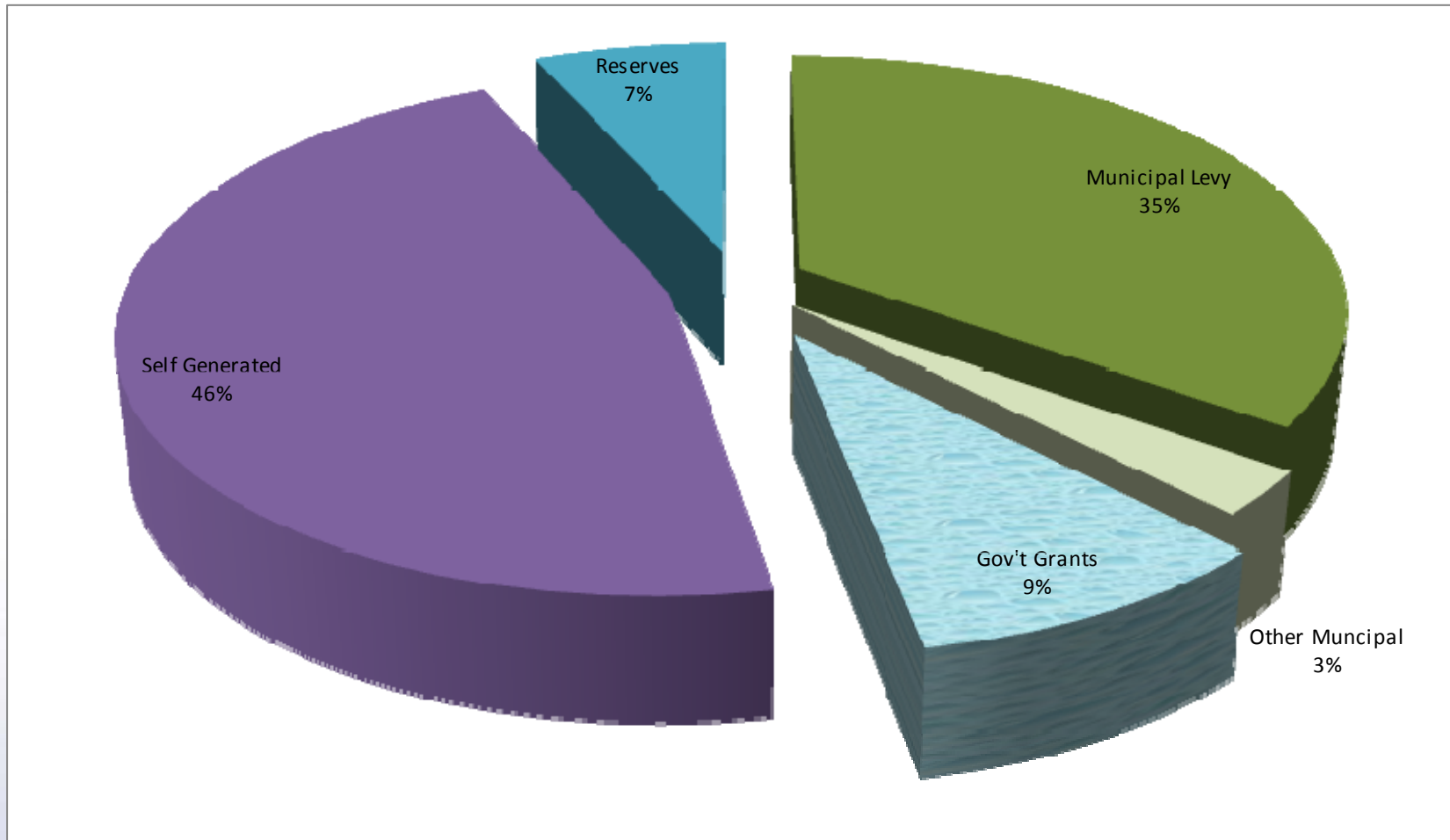
2014 Budget Expenditures = \$29.5 Million (\$ 30.7 Million in 2013)



# 2014 Budget - Sources of Revenue



Total 2014 Budget Revenue = \$29.5 Million (\$ 30.7 Million in 2013)





# 2014 Budget

---

- **Operating Budget**

- Watershed Management (Dams, flood forecasting, planning, lands management, education)
- Conservation Areas
- Corporate Services and Communication

- **Capital Budget**

- Water Control Structures
- Conservation Areas

- **Special Projects**

- Water Management Plan
- Rural Water Quality Program
- Land Acquisition
- Emerald Ash Borer
- Source Projection Program



# GRCRA Budget 2014 Summary

<u>Total Expenditures</u>		<u>2013 Budget</u>	<u>2014 Budget</u>	<u>Incr (Decr)</u>	<u>% Change</u>
A	Total "Base" Operating	22,917,322	23,282,573	365,251	1.6%
B	Total "Base" Capital	4,267,365	2,962,400	(1,304,965)	-30.6%
C	Total Special Programs	3,540,600	3,231,000	(309,600)	-8.7%
<b>Grand Total</b>		<b>30,725,287</b>	<b>29,475,973</b>	<b>(1,249,314)</b>	<b>-4.1%</b>

<u>Total Revenue</u>		<u>2013 Budget</u>	<u>2014 Budget</u>	<u>Incr (Decr)</u>	<u>% Change</u>
	Municipal General Levy	10,044,000	10,292,000	248,000	2.5%
	Other Municipal Funding	1,030,000	830,000	(200,000)	-19.4%
	Other Government Grants	3,676,673	2,768,573	( 908,100)	-24.8%
	Self-Generated Revenue	14,180,249	13,624,000	(556,249)	-3.9%
	Funding From Reserves	1,794,365	1,961,400	167,035	-9.3%
<b>Grand Total</b>		<b>30,725,287</b>	<b>29,475,973</b>	<b>(1,249,314)</b>	<b>-4.1%</b>

# GRCA Budget 2014



## Section A: BASE PROGRAMS – OPERATING

<b>Operating Expenditures</b>					
Watershed Management and Other	12,960,250	13,086,600	126,350	1.0%	
Conservation Areas	6,155,600	6,374,000	218,400	3.5%	
Corporate Services and Communications	3,801,472	3,821,973	20,501	0.5%	
<b>Total Base Operating Expenditures</b>	<b>22,917,322</b>	<b>23,282,573</b>	<b>365,251</b>	<b>1.6%</b>	
<b>Sources of Funding</b>					
Municipal General Levy	9,044,000	9,292,000	248,000	2.7%	
Municipal Special Levy	50,000	50,000	-	0.0%	
Government Grants	871,073	871,073	-	0.0%	
Self-Generated	12,473,620	12,745,500	271,880	2.2%	
Reserves	124,000	124,000	-	0.0%	
Surplus Carried Forward	354,629	200,000	(154,629)	-43.6%	
<b>Total Base Funding</b>	<b>22,917,322</b>	<b>23,282,573</b>	<b>365,251</b>	<b>1.6%</b>	

# GRCA Budget 2014



## Section B: BASE PROGRAMS – CAPITAL

	<u>BASE PROGRAMS</u>	<u>2013 Budget</u>	<u>2014 Budget</u>	<u>Incr (Decr)</u>	<u>% Change</u>
<b>Capital Expenditures</b>					
	Water Contr. Structures, Gauges, FF&W	3,300,000	2,150,000	(1,150,000)	
	Conservation Areas	622,000	655,000	33,000	
	Miscellaneous	345,365	157,400	(187,965)	
	<b>Total Base Capital Expenditures</b>	<b>4,267,365</b>	<b>2,962,400</b>	<b>(1,304,965)</b>	<b>-30.6%</b>
<b>Sources of Funding</b>					
				-	
				-	
	Municipal General Levy	1,000,000	1,000,000	-	
	Municipal Special Levy	200,000	-	(200,000)	
	Government Grants	1,450,000	875,000	(575,000)	
	Self-Generated	622,000	600,000	(22,000)	
	Reserves	995,365	487,400	(507,965)	
	<b>Total Base Capital Funding</b>	<b>4,267,365</b>	<b>2,962,400</b>	<b>(1,304,965)</b>	<b>-30.6%</b>



# GRCA Budget 2014



## Section C: SPECIAL PROJECTS

<b>Special Projects</b>				
Grand River Water Management Plan	725,000	200,000	(525,000)	
Rural Water Quality Program Capital Grants	700,000	700,000	-	
Emerald Ash Borer	-	900,000	900,000	
Acquisition of Conservation Lands	300,000	300,000	-	
Source Protection Program	644,600	790,000	145,400	
Other	1,171,000	341,000	(830,000)	
<b>Total Special Projects Expenditures</b>	<b>3,540,600</b>	<b>3,231,000</b>	<b>(309,600)</b>	<b>-8.7%</b>
<b>Sources of Funding</b>				
Provincial Grants for Source Protection	644,600	790,000	145,400	
Other Municipal and Government Grants	1,491,000	905,000	(586,000)	
Self-Generated	730,000	186,000	(544,000)	
Funding from Reserves	675,000	1,350,000	675,000	
<b>Total Special Projects Funding</b>	<b>3,540,600</b>	<b>3,231,000</b>	<b>(309,600)</b>	<b>-8.7%</b>

# General Municipal Levy for 2014



	% CVA in Watershed	2013 CVA (Modified)	CVA in Watershed	CVA-Based Apportionment	2014 Budget Operating Levy	2014 Budget Capital Levy	2014 Budget Total Levy	Actual 2013 Levy	% Change
Brant County	84.0%	5,087,948,734	4,273,876,936	3.1%	291,249	31,344	322,593	325,807	-0.99%
Brantford C	100.0%	11,332,759,309	11,332,759,309	8.3%	772,286	83,113	855,399	878,898	-2.67%
Amaranth Twp	82.0%	584,219,945	479,060,355	0.4%	32,646	3,513	36,159	36,109	0.14%
East Garafraxa Twp	80.0%	450,819,635	360,655,708	0.3%	24,577	2,645	27,222	28,546	-4.64%
Town of Grand Valley	100.0%	308,471,510	308,471,510	0.2%	21,021	2,262	23,283	22,658	2.76%
Melancthon Twp	56.0%	429,248,455	240,379,135	0.2%	16,381	1,763	18,144	18,051	0.52%
Southgate Twp	6.0%	744,049,265	44,642,956	0.0%	3,042	327	3,369	3,132	7.57%
Haldimand County	41.0%	5,724,480,977	2,347,037,201	1.7%	159,942	17,213	177,155	180,002	-1.58%
Norfolk County	5.0%	7,669,971,996	383,498,600	0.3%	26,134	2,813	28,947	28,769	0.62%
Halton Region	10.2%	31,211,740,348	3,194,986,338	2.3%	217,727	23,432	241,159	217,596	10.83%
<b>Hamilton City (estimated)</b>	<b>4.7%</b>	<b>69,589,855,415</b>	<b>3,270,723,205</b>	<b>2.4%</b>	<b>222,888</b>	<b>23,987</b>	<b>246,875</b>	<b>243,115</b>	<b>1.55%</b>
Oxford County	38.1%	3,240,944,186	1,235,610,582	0.9%	84,202	9,062	93,264	87,218	6.93%
North Perth T	2.0%	1,559,316,687	31,186,334	0.0%	2,125	229	2,354	2,271	3.65%
Perth East Twp	40.0%	1,428,198,317	571,279,327	0.4%	38,931	4,190	43,121	39,582	8.94%
Waterloo Region	100.0%	77,728,100,457	77,728,100,457	57.0%	5,296,883	570,047	5,866,931	5,695,177	3.02%
Centre Wellington Twp	100.0%	3,805,704,406	3,805,704,406	2.8%	259,345	27,911	287,256	282,548	1.67%
Erin T	49.0%	2,076,627,298	1,017,547,376	0.7%	69,342	7,463	76,805	75,195	2.14%
Guelph C	100.0%	20,190,121,046	20,190,121,046	14.8%	1,375,882	148,072	1,523,954	1,472,961	3.46%
Guelph Eramosa Twp	100.0%	2,194,488,973	2,194,488,973	1.6%	149,546	16,094	165,640	163,033	1.60%
Mapleton Twp	95.0%	1,221,790,697	1,160,701,162	0.9%	79,098	8,512	87,610	82,150	6.65%
Wellington North Twp	51.0%	1,310,396,996	668,302,468	0.5%	45,542	4,901	50,443	49,260	2.40%
Puslinch Twp	75.0%	2,019,393,247	1,514,544,935	1.1%	103,211	11,107	114,318	111,922	2.14%
<b>Total</b>		<b>249,908,647,899</b>	<b>136,353,678,319</b>	<b>100.00%</b>	<b>9,292,000</b>	<b>1,000,000</b>	<b>10,292,000</b>	<b>10,044,000</b>	<b>2.47%</b>