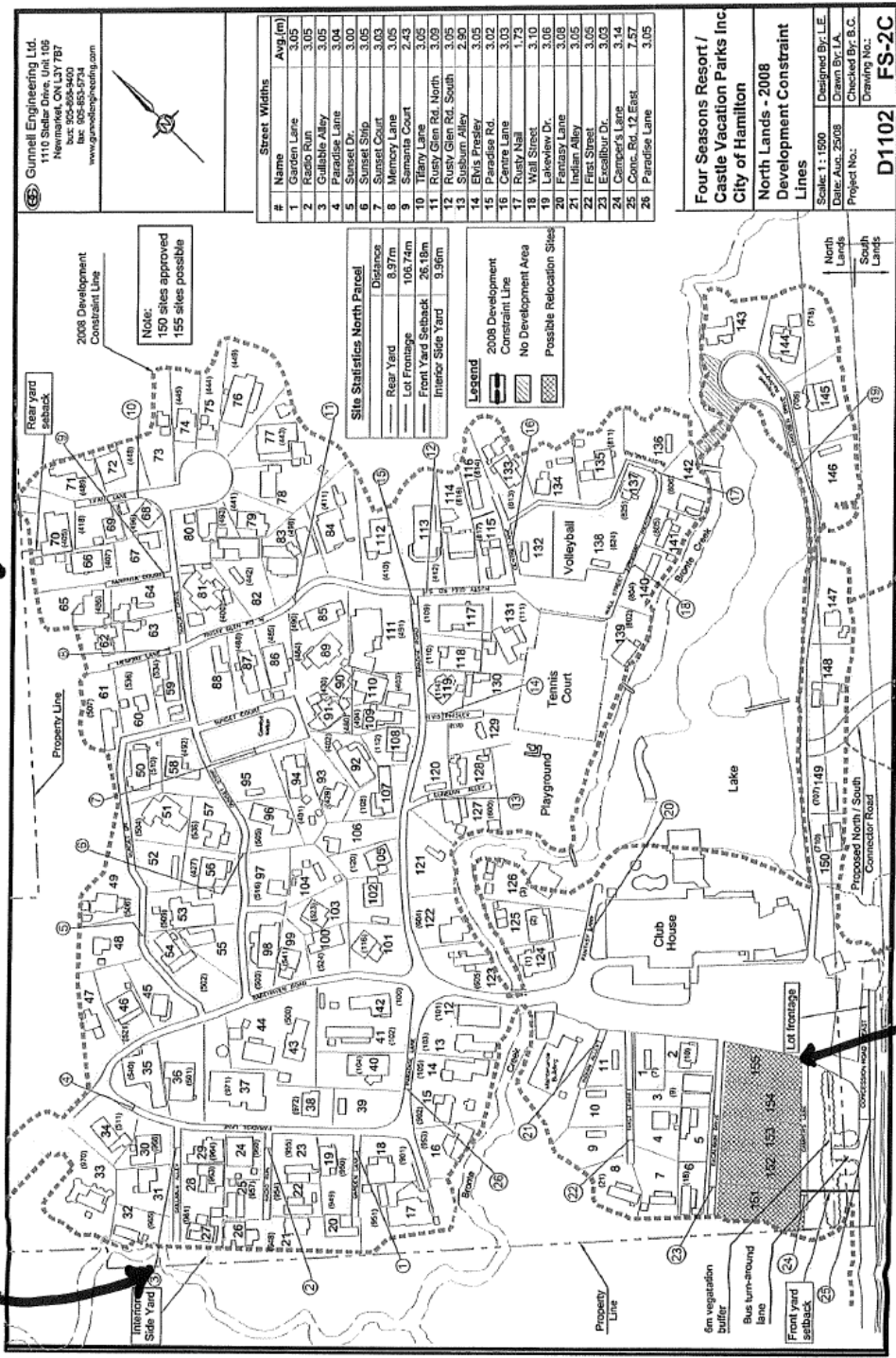


Reduced Rear Yards

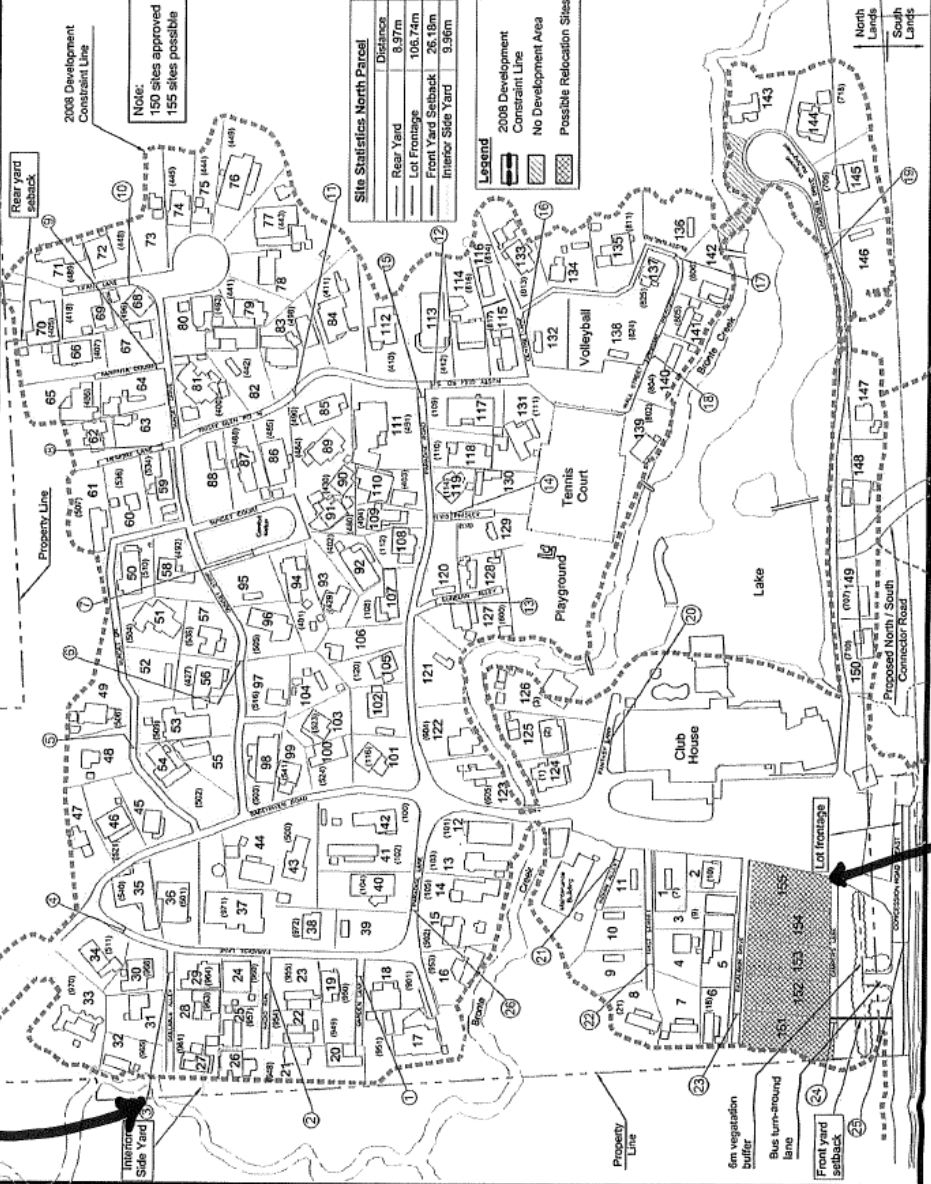
Reduced Side Yards

Future Relocation Sites



Four Seasons Resort /
Castle Vacation Parks Inc.
City of Hamilton
North Lands - 2008
Development Constraint
Lines

Gunnell Engineering Ltd.
1110 Slater Drive, Unit 105
Newmarket, ON L3Y 7B7
Tel: 905-886-8400
Fax: 905-883-2724
www.gunnellengineering.com



North Lands
South Lands

Four Season Resort - North Lands Site Statistics
--

Proposed Site #	Area (m ²)	Frontage (m)	Proposed Site #	Area (m ²)	Frontage (m)	Proposed Site #	Area (m ²)	Frontage (m)
1	334.56	40.78	30	372.68	31.65	59	359.60	54.77
2	329.14	38.09	31	477.44	24.12	60	468.96	32.91
3	340.91	16.97	32	381.48	11.25	61	362.48	12.41
4	421.54	17.92	33	1,005.35	27.79	62	330.46	14.32
5	395.78	31.07	34	537.43	38.65	63	315.59	36.70
6	297.77	23.76	35	509.52	59.86	64	388.52	39.91
7	518.89	10.13	36	717.78	38.05	65	463.43	5.80
8	403.67	8.25	37	1,856.90	41.89	66	606.14	8.52
9	450.25	13.46	38	440.85	25.91	67	363.24	38.93
10	383.95	20.86	39	450.95	40.58	68	234.07	28.42
11	274.47	57.06	40	650.02	17.34	69	354.42	19.23
12	507.45	49.10	41	521.40	13.14	70	563.38	4.56
13	406.73	10.86	42	725.97	56.82	71	473.41	16.02
14	512.88	14.47	43	711.10	16.99	72	452.48	20.30
15	531.80	19.47	44	625.87	25.61	73	398.22	11.60
16	507.19	23.83	45	427.97	54.42	74	473.07	18.26
17	882.81	25.03	46	518.16	15.22	75	432.41	9.89
18	432.17	58.12	47	511.30	20.59	76	836.10	5.76
19	328.74	38.68	48	533.01	20.49	77	1,149.74	6.16
20	408.94	17.89	49	423.00	19.64	78	594.87	9.64
21	367.86	6.75	50	383.61	40.85	79	385.62	7.02
22	328.34	14.91	51	549.60	16.62	80	521.16	46.35
23	425.19	40.58	52	403.95	24.99	81	633.44	62.55
24	314.97	35.71	53	670.02	34.33	82	652.92	11.89
25	295.05	18.17	54	642.12	67.06	83	756.30	28.43
26	239.36	6.07	55	397.36	27.01	84	863.93	16.34
27	315.39	16.06	56	732.82	66.67	85	476.41	31.23
28	351.91	19.16	57	453.04	27.31	86	433.54	27.90
29	255.46	33.49	58	496.16	46.37	87	483.88	29.83