

Item #7.2
General Issues Committee
May 7, 2014



Hamilton
Public Works

**Public Works
Corporate Assets and Strategic Planning**

Civic Gateway Study
May 7, 2014

Providing services that bring our City to life !

Presentation Outline

- Previous Council direction
- History of the “Civic Gateway Program”
- 2008 public consultation
- Locations and challenges
- Strategy and financials
- Timeline

→ Community
→ People
→ Processes
→ Finance



Hamilton
Public Works

Why We Are Here?

General Issue Committee Motion - September 18, 2013

“That the City Manager, in conjunction with Public Works and Planning and Economic Development staff, be directed to report back on both a short- and long-term plan to address entrance and/or gateway signage in an effort to improve the branding and promotion of the City of Hamilton.”

- Community
- People
- Processes
- Finance



Hamilton
Public Works

History – Civic Gateways

- Community
- People
- Processes
- Finance



2001 – 2008

- Planning and Economic Development (PED) completed a Civic Gateway review using a three phase approach:
 - Phase 1: site identification
 - Phase 2: design options
 - Phase 3: cost estimate and an implementation strategy

2008

- PED – Urban Design initiated the Civic Gateway Design Study
- Study focused on the development of four design concepts and locations
- The study included a public consultation process
- Process was stopped

Public Voting Options

- Community
- People
- Processes
- Finance



Hamilton
Public Works

Option 1



Option 2



Public Voting Options

- Community
- People
- Processes
- Finance



Hamilton
Public Works

Option 3



Option 4

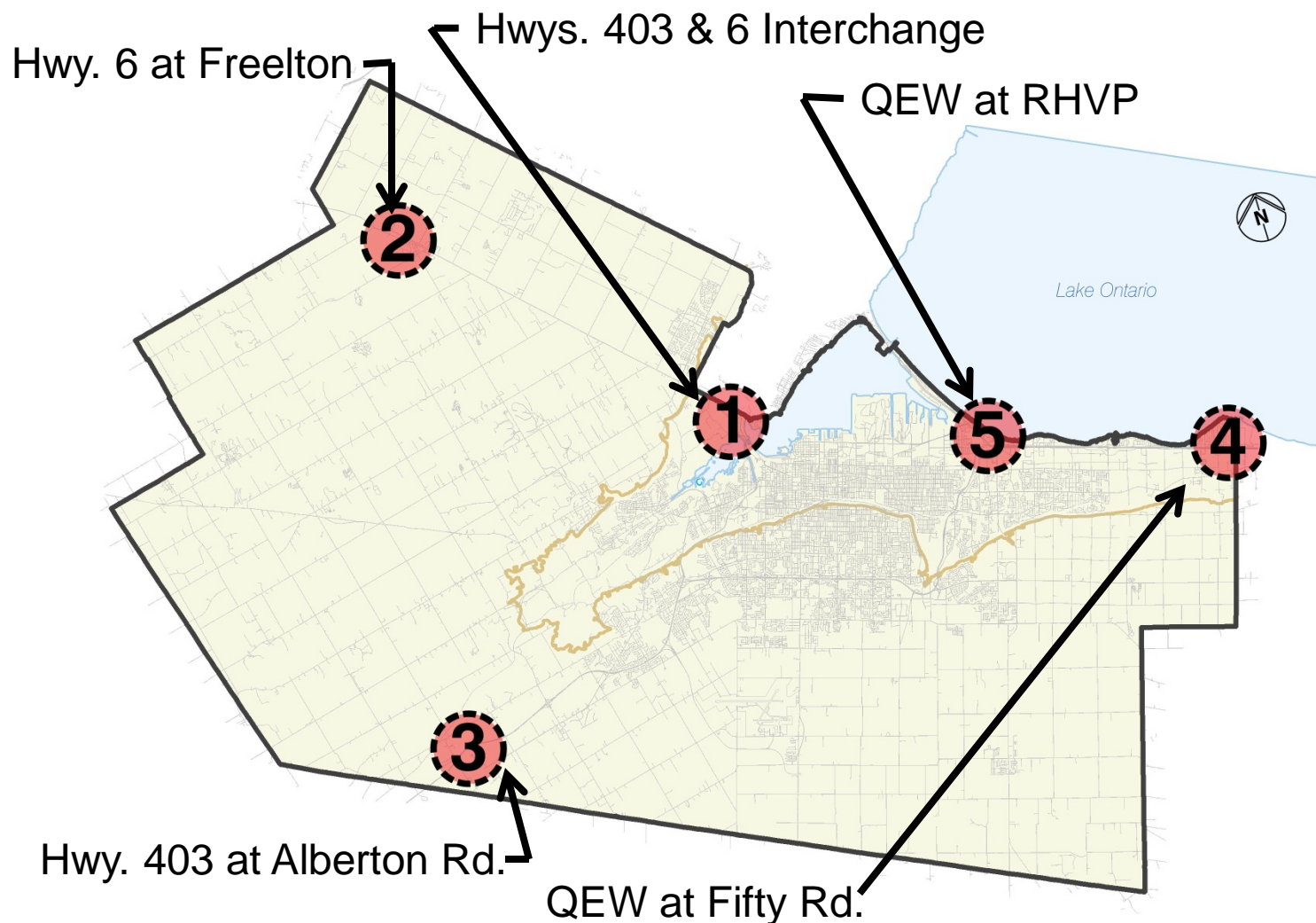


Gateway Sites Key Map

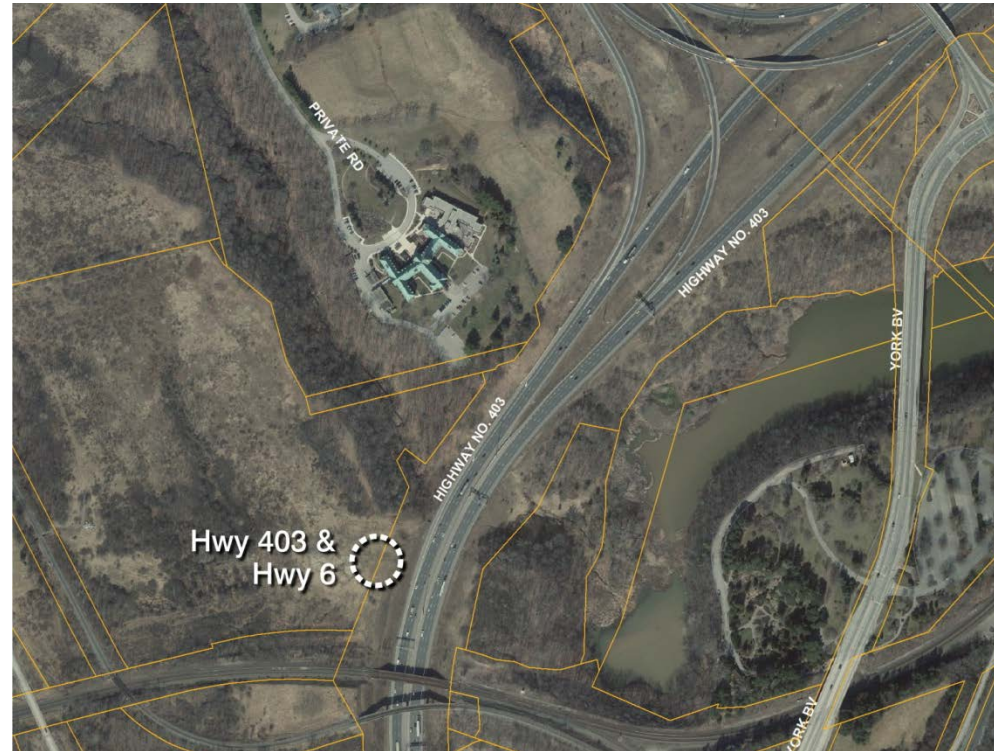
- Community
- People
- Processes
- Finance



Hamilton
Public Works



Highway 403 near Highway 6 Interchange - Site 1



- Community
- People
- Processes
- Finance

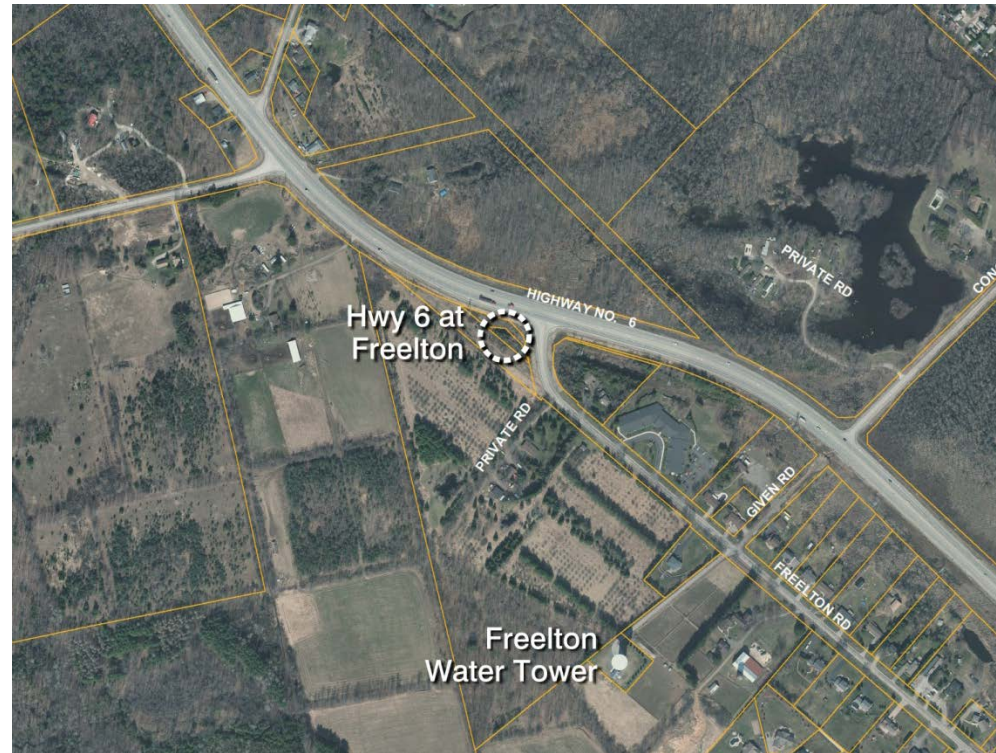


Hamilton
Public Works

Site Specific Challenges

- Topography
- Located in the Ministry of Transportation (MTO) Right-of-Way
- Access limited to MTO Right-of-Way
- Construction challenges

Highway 6 near Freelon Road – Site 2



- Community
- People
- Processes
- Finance



Hamilton
Public Works

Site Specific Challenges

- May require construction in the MTO Right-of-Way
- Low Average Annual Daily Traffic flow
- Minimal distance from Right-of-Way to existing tree line

Highway 403 near Alberton Road – Site 3



- Community
- People
- Processes
- Finance



Hamilton
Public Works

Site Specific Challenges

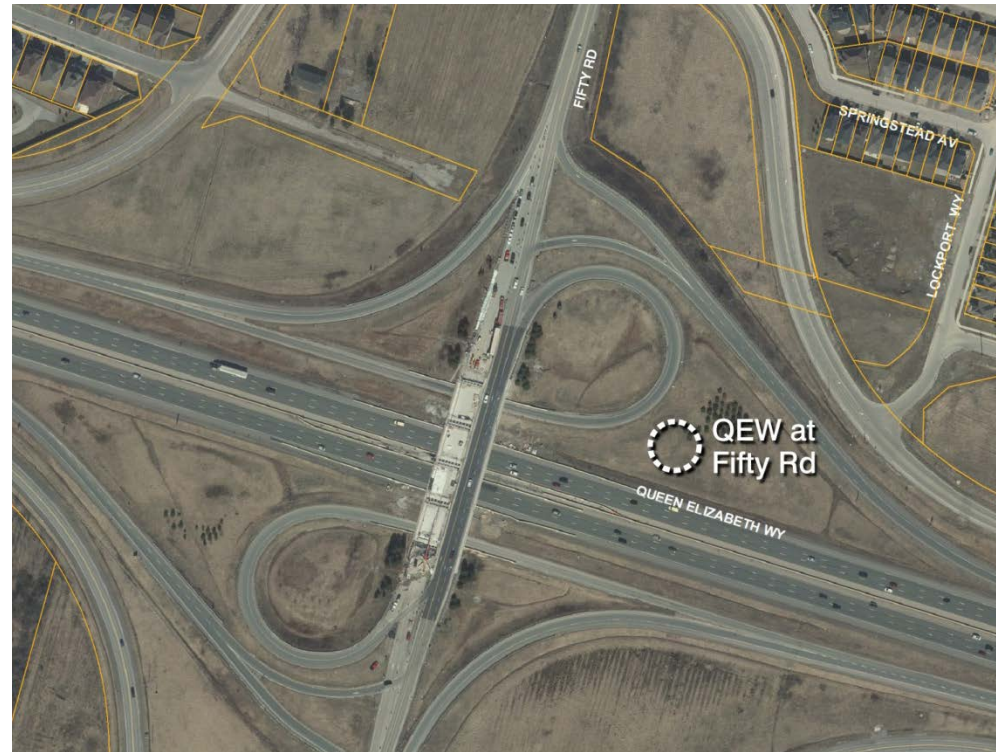
- Located in the MTO Right-of-Way
- Low Average Annual Daily Traffic flow

The QEW at Fifty Road – Site 4

- Community
- People
- Processes
- Finance



Hamilton
Public Works



Site Specific Challenges

- Located in the MTO Right-of-Way
- Existing “Stoney Creek” sign at Fruitland Road conflicts with MTO Policies

QEW Pedestrian Bridge at Red Hill Valley Parkway – Site 5

- Community
- People
- Processes
- Finance



Hamilton
Public Works



The existing QEW
Pedestrian Bridge serves as
a gateway feature



2014 – Proposed Gateway Strategy

Short-Term Strategy:

- A Civic Gateway be installed in the vicinity of Highway 403 and Highway 6 Interchange subject to approval from the Ministry of Transportation
- Design and construction costs - \$230,000

Why Highway 403 near Highway 6 Interchange?

- Clear visibility
- Traffic volume
- Official route to Pan Am Games soccer in Hamilton

Long-Term Strategy:

- Civic Gateways be investigated at Highway 6 near Freelon Road, Highway 403 near Alberton Road, and Queen Elizabeth Way near Fifty Road.

- Community
- People
- Processes
- Finance



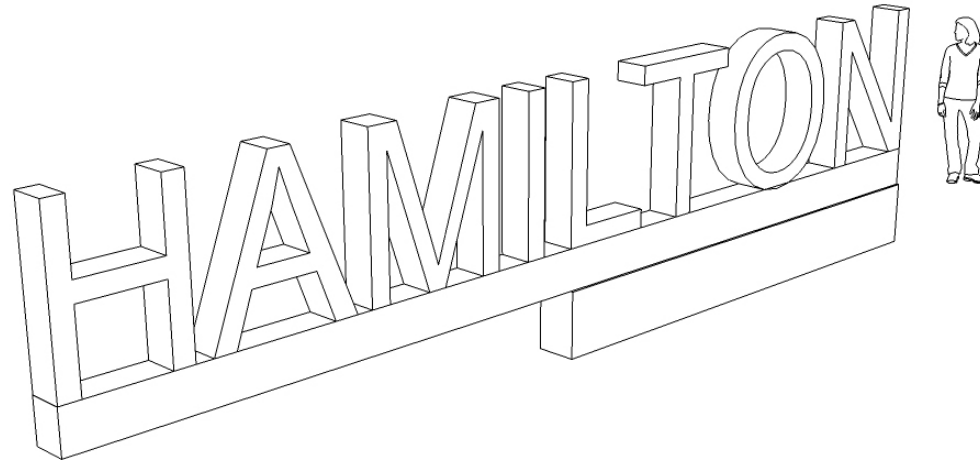
Hamilton
Public Works

2014 - Gateway Concept Detailed Design Development

- Community
- People
- Processes
- Finance



Hamilton
Public Works



Short-Term Timeline

- Web based public update: June 2014
- Detailed design: May – July 2014
- MTO application and approval: July 2014 – February 2015
- Procurement: February – March 2015
- Fabrication, site works and installation: April – July 2015

→ Community
→ People
→ Processes
→ Finance



Hamilton
Public Works

Rendering – Short Term Strategy

Civic Gateway at Highway 403 near Highway 6 (Location #1)

- Community
- People
- Processes
- Finance



Hamilton
Public Works





Hamilton
Public Works

QUESTIONS?