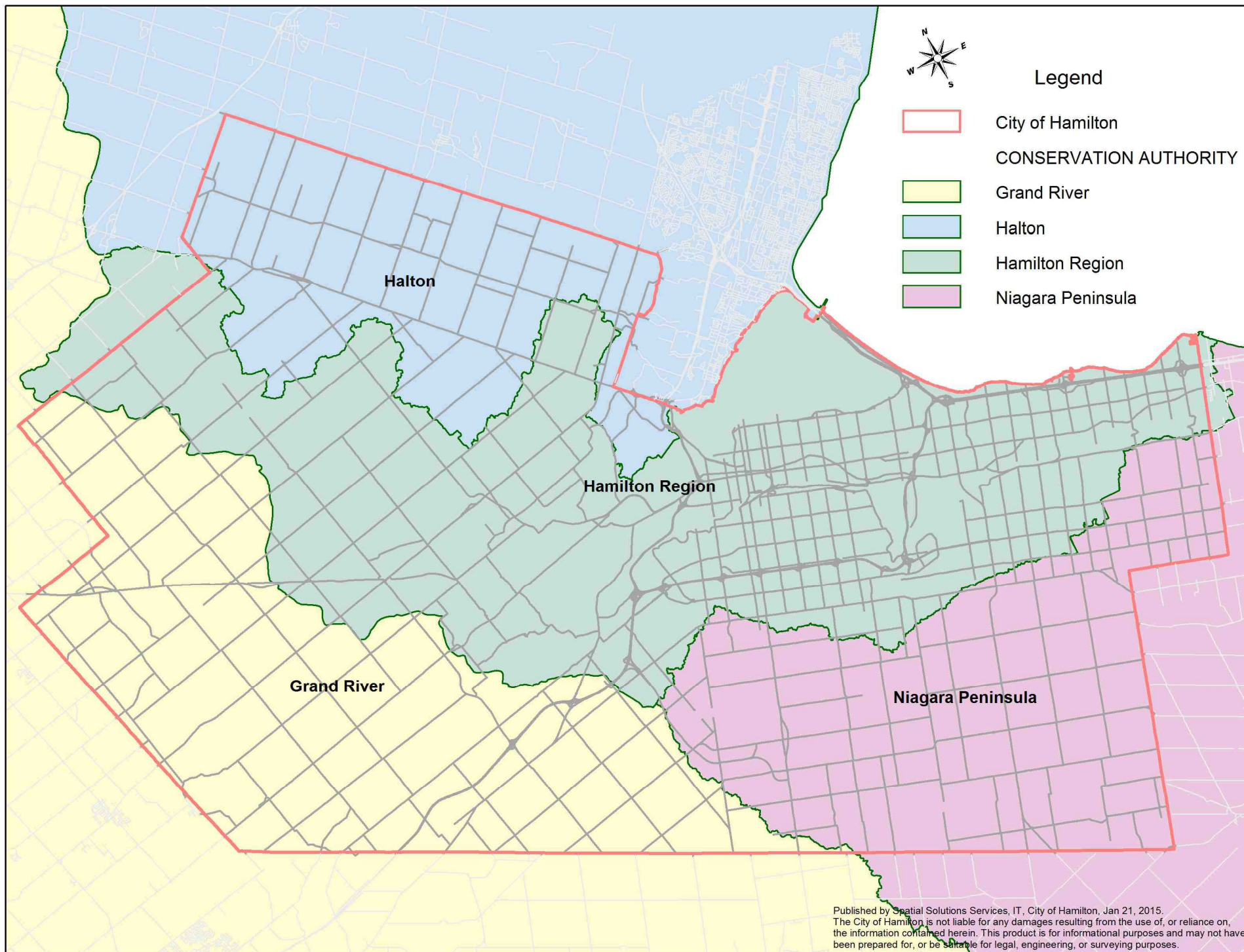


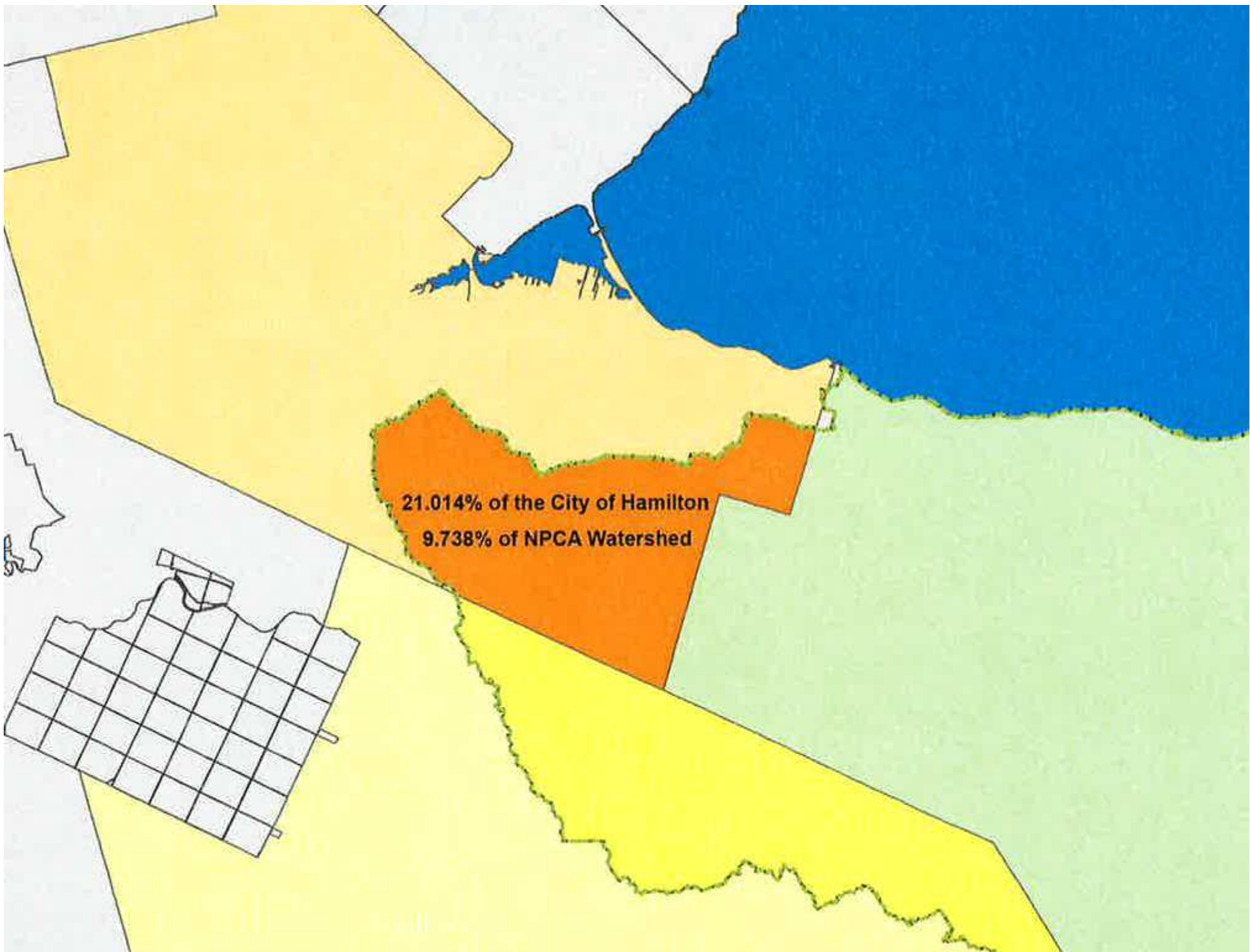
# **2015 Niagara Peninsula Conservation Authority Levy Apportionment**

**(FCS15018)**

## **GLC Agenda Item 7.1**

**January 23, 2015**





## Background - General

- Conservation Authorities determine their budget requirements and then set a levy for each municipality within their watershed based on provincial regulation (Ont Reg 670/00)
- The regulation provides two options for determining the apportionment:
  - By mutual agreement
  - By formula as set out in the regulation
- Each year the Ministry of Natural Resources and Forestry sends out the apportionments to the CA's



## Background – NPCA Apportionment

- Prior to Amalgamation (2001), the assessment used to determine Hamilton's (Region) apportionment was based on Glanbrook, Ancaster and Stoney Creek.
- The resulting share of the NPCA levy was about 6.7%
- At amalgamation, an issue was identified as the formula, now applied to all of the New City of Hamilton's assessment, would result in a significant shift in apportionment.
- This would result in Hamilton's share increasing from about 6.7% to 20%.

## Background - Agreements

- For 2001 – 2003 an interim agreement was used which kept Hamilton's share at about 6.7%.
- In 2004, all four conservation authorities agreed on an apportionment formula which would recognize the portion of Hamilton's assessment within their watersheds.
- Hamilton's share of the NPCA levy was reduced to about 4% due to the use of more accurate assessment data.
- The Ministry has been calculating the apportionments based on this agreement since 2004.

## Issue – 2015 NPCA Apportionments

- In December of 2014, NPCA staff met with Hamilton staff and identified a concern about the apportionment.
- In January of 2015, NPCA staff confirmed that by their interpretation of the provincial regulations, the agreement was invalid as it was not agreed to by all the participating municipalities (only the Conservation Authorities).
- In the absence of a new agreement, the NPCA has indicated that it will be apportioning their 2015 budget based on the provincial formula, not the existing agreement.
- This would increase the City of Hamilton's share from about 4% to 20%, resulting on an increase in cost of about \$865,000 (Draft).

## City of Hamilton Response to Date

- City's position is that the 2004 agreement is valid.
- City staff recognize that the agreement is due for review and recommend that this occur for the 2016 apportionments.
- The review must include all four conservation authorities.
- The CA's and municipalities should lobby the Province for an update to Regulation 670/00 to ensure that the apportionment formula uses assessments that reflect properties within the watershed of a CA.
- Staff continue to liaise with the Conservation Authorities and Province.
- Staff will recommend options to Council once the NPCA formally submits their levy.