



Hamilton

**Welcome to
The City of Hamilton
Planning Committee
Tuesday, August 11, 2015**

PED15109 – (ZAC-14-032/OPA-14-015)

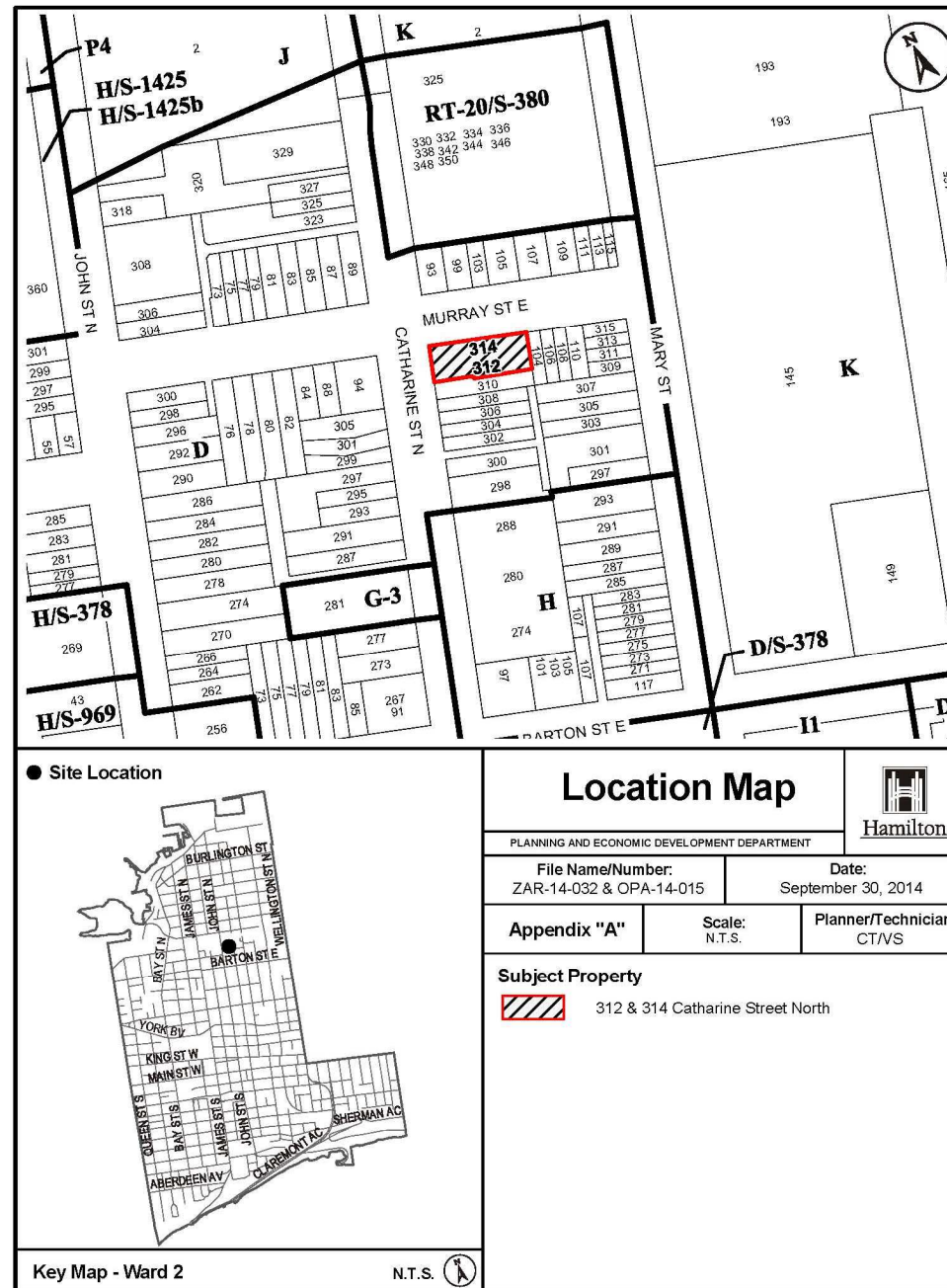
Applications for an Official Plan Amendment and Zoning
By-law Amendment for Lands Located at 312 and 314
Catharine Street North, Hamilton.

Presenter: Greg Macdonald

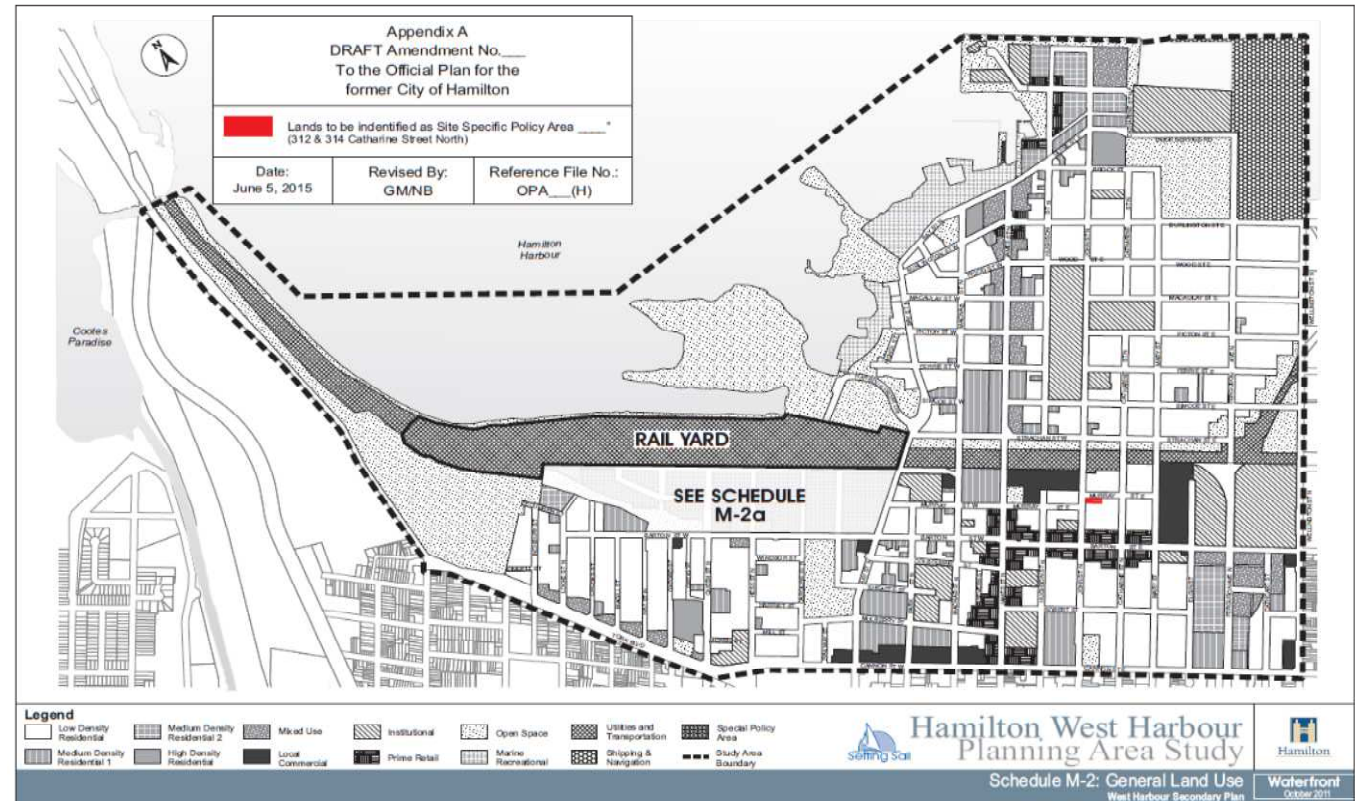


Hamilton

PED15109 **APPENDIX "A"**



PED15109 **APPENDIX “B”**

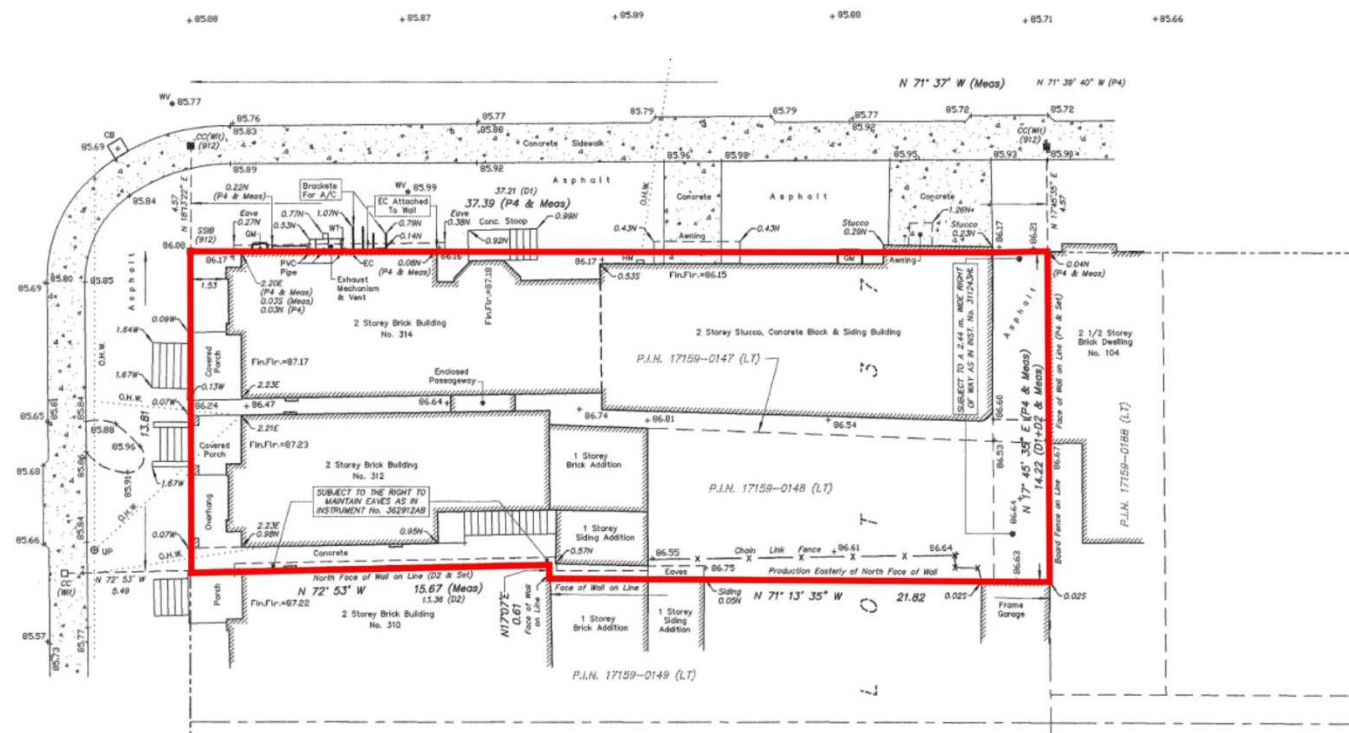


Hamilton

PED15109 APPENDIX "D"

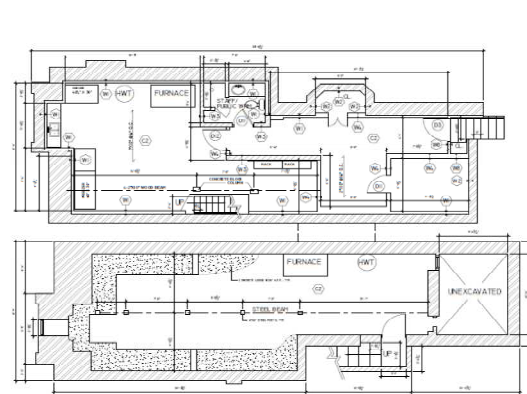
MURRAY STREET EAST

(BY NATHANIEL HUGHSON SURVEY-UNREGISTERED, P.I.N. 17159-0201 (L.T))

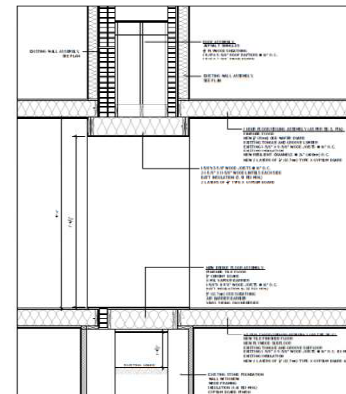


Hamilton

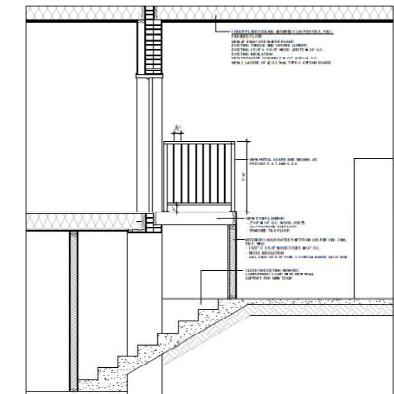
PED15109 **APPENDIX "D"**



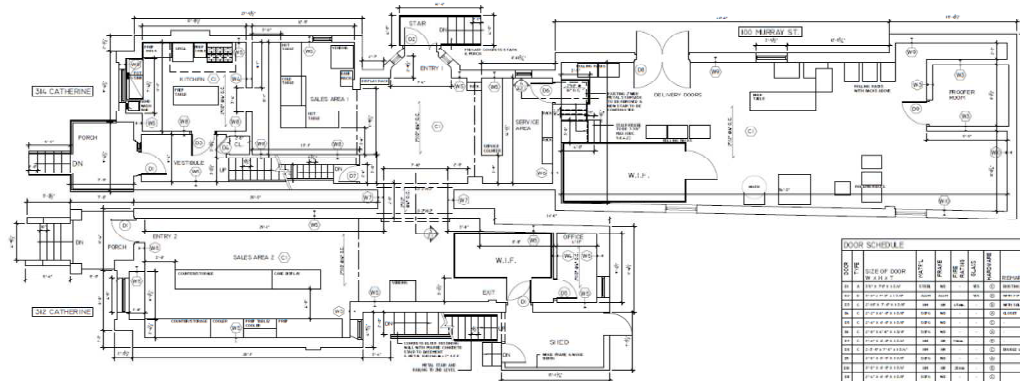
11 NEW BASEMENT LEVEL FLOOR PLAN
A21 SCALE 3/8"=1'-0"



31 BRIDGE CROSS SECTION
A21 SCALE 1/2"=1'-0"



41 BRIDGE CROSS SECTION
A21 SCALE 1/2"=1'-0"



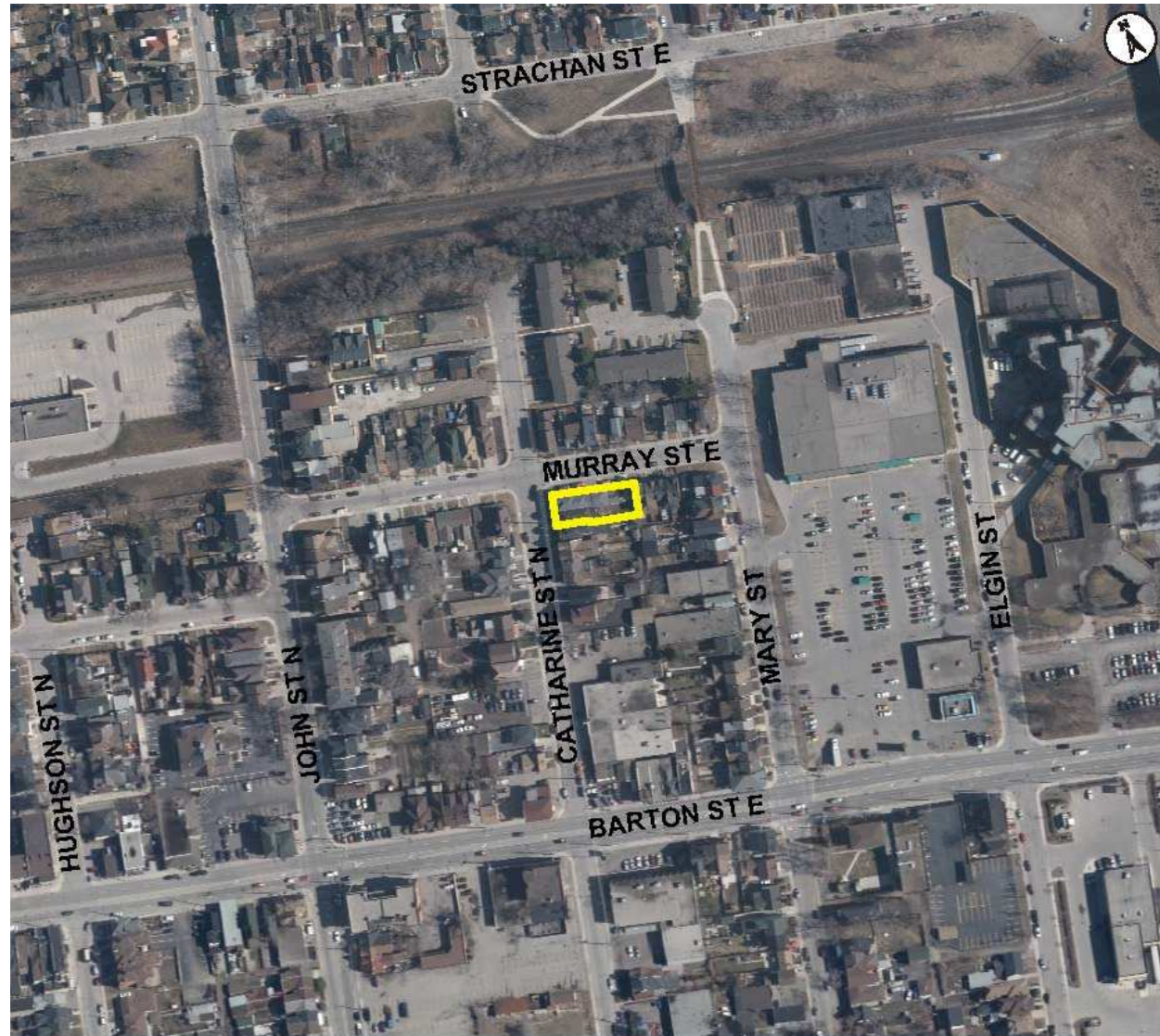
21 NEW GROUND FLOOR PLAN
A21 SCALE 3/8"=1'-0"

NO.	SIZE OF DOOR	TYPE	FINISH	REMARKS
1	2'-0" x 7'-0"	SW	SW	SW
2	2'-0" x 7'-0"	SW	SW	SW
3	2'-0" x 7'-0"	SW	SW	SW
4	2'-0" x 7'-0"	SW	SW	SW
5	2'-0" x 7'-0"	SW	SW	SW
6	2'-0" x 7'-0"	SW	SW	SW
7	2'-0" x 7'-0"	SW	SW	SW
8	2'-0" x 7'-0"	SW	SW	SW
9	2'-0" x 7'-0"	SW	SW	SW
10	2'-0" x 7'-0"	SW	SW	SW
11	2'-0" x 7'-0"	SW	SW	SW
12	2'-0" x 7'-0"	SW	SW	SW
13	2'-0" x 7'-0"	SW	SW	SW
14	2'-0" x 7'-0"	SW	SW	SW
15	2'-0" x 7'-0"	SW	SW	SW
16	2'-0" x 7'-0"	SW	SW	SW
17	2'-0" x 7'-0"	SW	SW	SW
18	2'-0" x 7'-0"	SW	SW	SW
19	2'-0" x 7'-0"	SW	SW	SW
20	2'-0" x 7'-0"	SW	SW	SW

WALL TYPE LEGEND	
NO.	DESCRIPTION
W1	1/2" THICK CONCRETE WALL
W2	1/2" THICK CONCRETE WALL
W3	1/2" THICK CONCRETE WALL
W4	1/2" THICK CONCRETE WALL
W5	1/2" THICK CONCRETE WALL
W6	1/2" THICK CONCRETE WALL
W7	1/2" THICK CONCRETE WALL
W8	1/2" THICK CONCRETE WALL
W9	1/2" THICK CONCRETE WALL
W10	1/2" THICK CONCRETE WALL
W11	1/2" THICK CONCRETE WALL
W12	1/2" THICK CONCRETE WALL
W13	1/2" THICK CONCRETE WALL
W14	1/2" THICK CONCRETE WALL
W15	1/2" THICK CONCRETE WALL
W16	1/2" THICK CONCRETE WALL
W17	1/2" THICK CONCRETE WALL
W18	1/2" THICK CONCRETE WALL
W19	1/2" THICK CONCRETE WALL
W20	1/2" THICK CONCRETE WALL
W21	1/2" THICK CONCRETE WALL
W22	1/2" THICK CONCRETE WALL
W23	1/2" THICK CONCRETE WALL
W24	1/2" THICK CONCRETE WALL
W25	1/2" THICK CONCRETE WALL
W26	1/2" THICK CONCRETE WALL
W27	1/2" THICK CONCRETE WALL
W28	1/2" THICK CONCRETE WALL
W29	1/2" THICK CONCRETE WALL
W30	1/2" THICK CONCRETE WALL
W31	1/2" THICK CONCRETE WALL
W32	1/2" THICK CONCRETE WALL
W33	1/2" THICK CONCRETE WALL
W34	1/2" THICK CONCRETE WALL
W35	1/2" THICK CONCRETE WALL
W36	1/2" THICK CONCRETE WALL
W37	1/2" THICK CONCRETE WALL
W38	1/2" THICK CONCRETE WALL
W39	1/2" THICK CONCRETE WALL
W40	1/2" THICK CONCRETE WALL
W41	1/2" THICK CONCRETE WALL
W42	1/2" THICK CONCRETE WALL
W43	1/2" THICK CONCRETE WALL
W44	1/2" THICK CONCRETE WALL
W45	1/2" THICK CONCRETE WALL
W46	1/2" THICK CONCRETE WALL
W47	1/2" THICK CONCRETE WALL
W48	1/2" THICK CONCRETE WALL
W49	1/2" THICK CONCRETE WALL
W50	1/2" THICK CONCRETE WALL
W51	1/2" THICK CONCRETE WALL
W52	1/2" THICK CONCRETE WALL
W53	1/2" THICK CONCRETE WALL
W54	1/2" THICK CONCRETE WALL
W55	1/2" THICK CONCRETE WALL
W56	1/2" THICK CONCRETE WALL
W57	1/2" THICK CONCRETE WALL
W58	1/2" THICK CONCRETE WALL
W59	1/2" THICK CONCRETE WALL
W60	1/2" THICK CONCRETE WALL
W61	1/2" THICK CONCRETE WALL
W62	1/2" THICK CONCRETE WALL
W63	1/2" THICK CONCRETE WALL
W64	1/2" THICK CONCRETE WALL
W65	1/2" THICK CONCRETE WALL
W66	1/2" THICK CONCRETE WALL
W67	1/2" THICK CONCRETE WALL
W68	1/2" THICK CONCRETE WALL
W69	1/2" THICK CONCRETE WALL
W70	1/2" THICK CONCRETE WALL
W71	1/2" THICK CONCRETE WALL
W72	1/2" THICK CONCRETE WALL
W73	1/2" THICK CONCRETE WALL
W74	1/2" THICK CONCRETE WALL
W75	1/2" THICK CONCRETE WALL
W76	1/2" THICK CONCRETE WALL
W77	1/2" THICK CONCRETE WALL
W78	1/2" THICK CONCRETE WALL
W79	1/2" THICK CONCRETE WALL
W80	1/2" THICK CONCRETE WALL
W81	1/2" THICK CONCRETE WALL
W82	1/2" THICK CONCRETE WALL
W83	1/2" THICK CONCRETE WALL
W84	1/2" THICK CONCRETE WALL
W85	1/2" THICK CONCRETE WALL
W86	1/2" THICK CONCRETE WALL
W87	1/2" THICK CONCRETE WALL
W88	1/2" THICK CONCRETE WALL
W89	1/2" THICK CONCRETE WALL
W90	1/2" THICK CONCRETE WALL
W91	1/2" THICK CONCRETE WALL
W92	1/2" THICK CONCRETE WALL
W93	1/2" THICK CONCRETE WALL
W94	1/2" THICK CONCRETE WALL
W95	1/2" THICK CONCRETE WALL
W96	1/2" THICK CONCRETE WALL
W97	1/2" THICK CONCRETE WALL
W98	1/2" THICK CONCRETE WALL
W99	1/2" THICK CONCRETE WALL
W100	1/2" THICK CONCRETE WALL



Hamilton



Subject Property

312 and 314 Catharine Street North, Hamilton



Hamilton



Photo 1 – 312 and 314 Catharine Street North.



Hamilton



Photo 2 – Bonanza Bakery side view along Murray Street East.



Hamilton



Photo 3 – Rear of Bonanza Bakery along Murray Street East.





Photo 4 – View East along Murray Street East.



Hamilton



Photo 5 – View West along Murray Street East.



Hamilton



Photo 6 – View North of Catharine Street North, North of Murray Street East.



Hamilton



Photo 7 – View South of Catharine Street North, South of Murray Street East.



Hamilton



Photo 8 – Mary Street at the East end of Murray Street East.



Hamilton

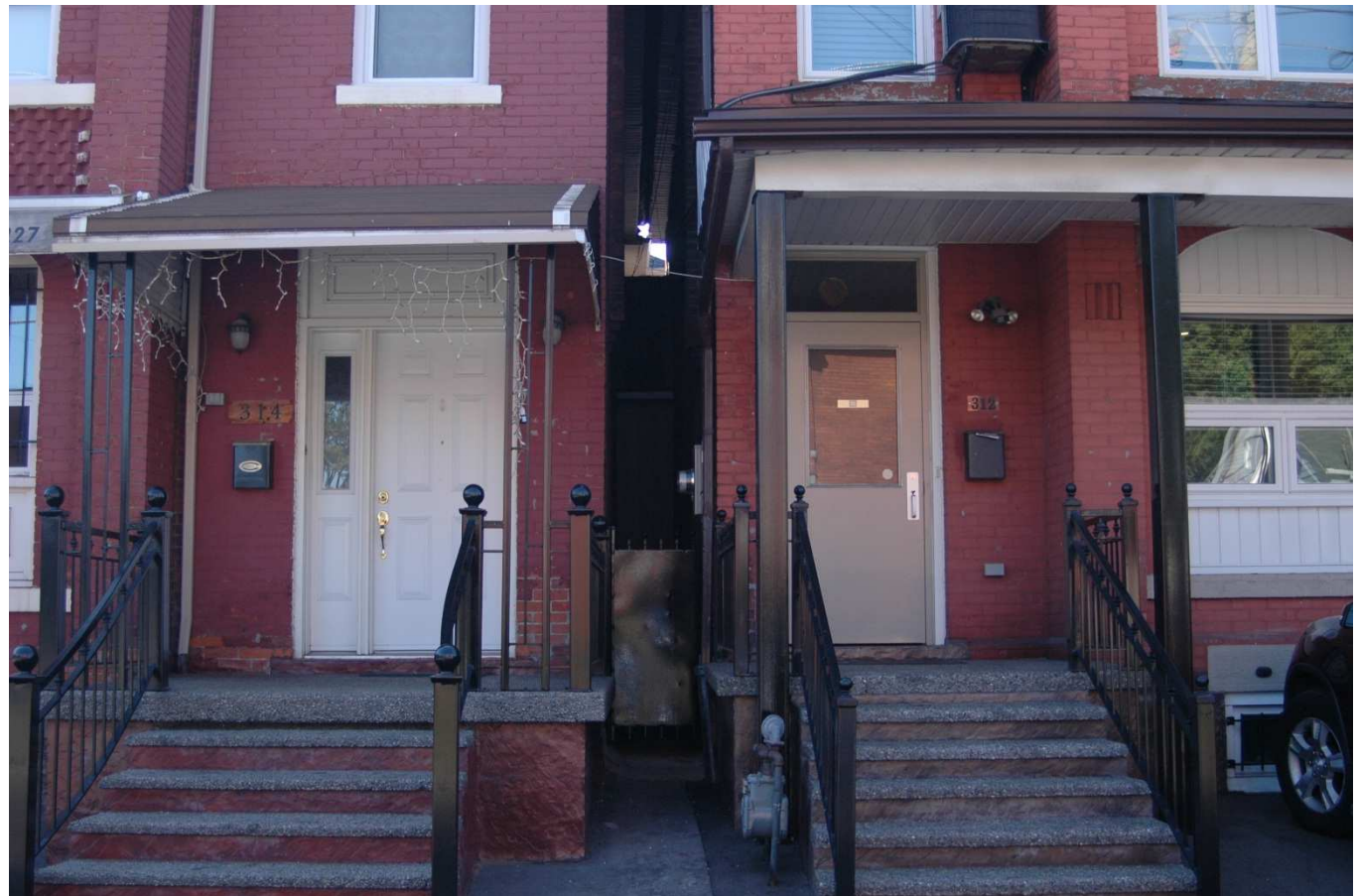


Photo 8 – Front of 312 and 314 Catharine Street North.



Hamilton



Photo 3 – Side profile of Bonanza Bakery Building.



Hamilton

**Thank You for Attending
The City of Hamilton
Planning Committee.**



Hamilton