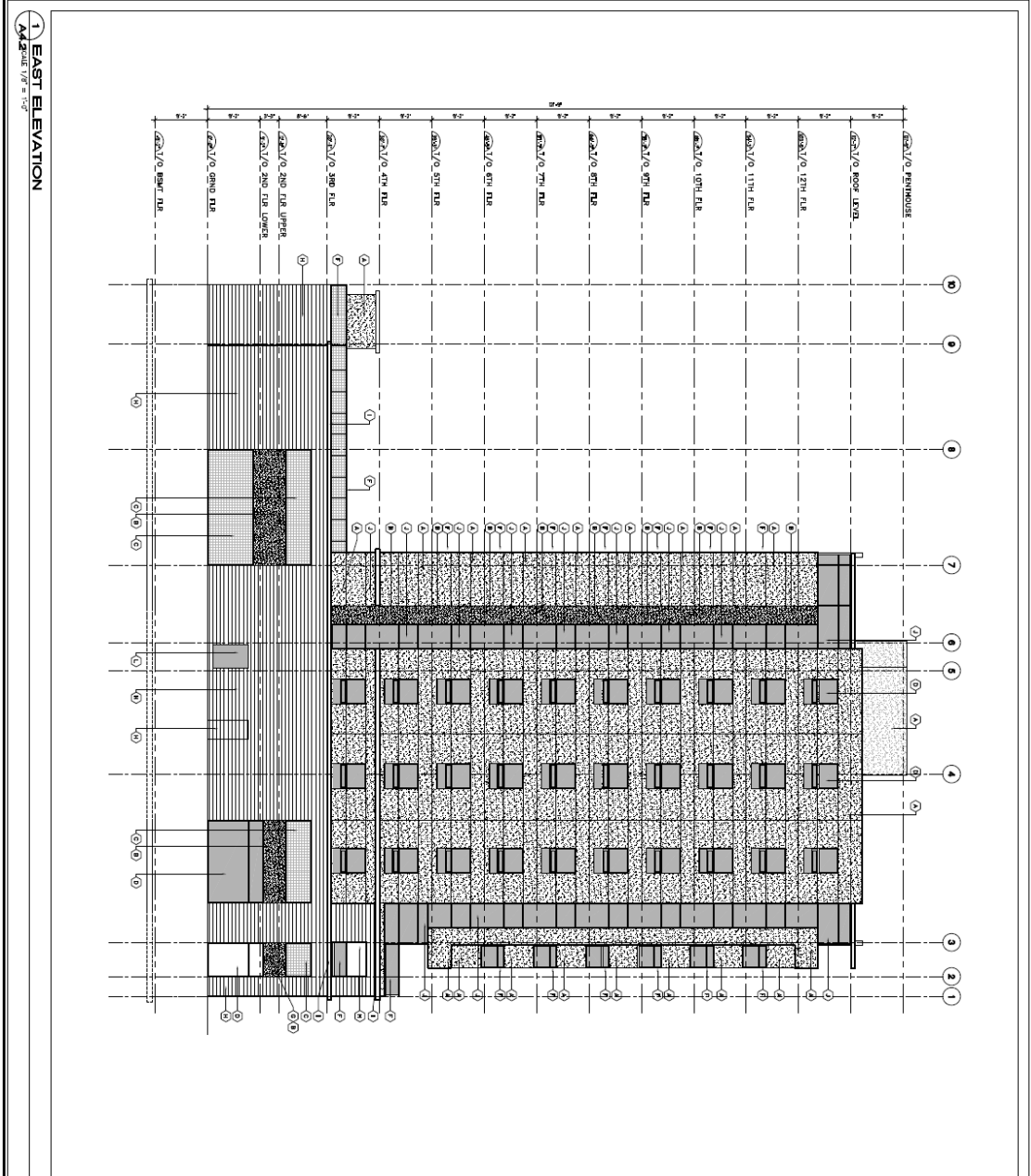


EXTERIOR FINISH LEGEND

- 1 FINISH TO EXTERIOR WALLS
- 2 FINISH TO EXTERIOR WALLS
- 3 FINISH TO EXTERIOR WALLS
- 4 FINISH TO EXTERIOR WALLS
- 5 FINISH TO EXTERIOR WALLS
- 6 FINISH TO EXTERIOR WALLS
- 7 FINISH TO EXTERIOR WALLS
- 8 FINISH TO EXTERIOR WALLS
- 9 FINISH TO EXTERIOR WALLS
- 10 FINISH TO EXTERIOR WALLS
- 11 FINISH TO EXTERIOR WALLS
- 12 FINISH TO EXTERIOR WALLS
- 13 FINISH TO EXTERIOR WALLS
- 14 FINISH TO EXTERIOR WALLS

NOT TO BE USED
FOR CONSTRUCTION

<p>PROPOSED APARTMENT BUILDING CANNON & CATHCART VRANCOR GROUP</p> <p>220 - 222 CANNON STREET EAST HAMILTON, ONTARIO</p>	<p>DATE: 13/07/18</p> <p>DWG NO: A4.1</p> <p>SCALE: AS NOTED</p> <p>DATE: NOV 2017</p>	<p>FOR FINISH</p> <p>ONTARIO ASSOCIATION OF ARCHITECTS</p>	<p>LINTACK ARCHITECTS INCORPORATED</p> <p>344 JAMES STREET SOUTH, HAMILTON, ONTARIO, L8P 3K3 T: 905.522.4165 • F: 905.522.2099 • E: info@lntack.com www.lntack.com</p>
--	--	--	---



1 EAST ELEVATION
SCALE 1/8" = 1'-0"

EXTERIOR FINISH LEGEND

- 1 PRODUCT FINISH, COLOR No. 1
- 2 PRODUCT FINISH, COLOR No. 2
- 3 PRODUCT FINISH, COLOR No. 3
- 4 PRODUCT FINISH, COLOR No. 4
- 5 PRODUCT FINISH, COLOR No. 5
- 6 PRODUCT FINISH, COLOR No. 6
- 7 PRODUCT FINISH, COLOR No. 7
- 8 PRODUCT FINISH, COLOR No. 8
- 9 PRODUCT FINISH, COLOR No. 9
- 10 PRODUCT FINISH, COLOR No. 10
- 11 PRODUCT FINISH, COLOR No. 11
- 12 PRODUCT FINISH, COLOR No. 12
- 13 PRODUCT FINISH, COLOR No. 13
- 14 PRODUCT FINISH, COLOR No. 14
- 15 PRODUCT FINISH, COLOR No. 15
- 16 PRODUCT FINISH, COLOR No. 16
- 17 PRODUCT FINISH, COLOR No. 17
- 18 PRODUCT FINISH, COLOR No. 18
- 19 PRODUCT FINISH, COLOR No. 19
- 20 PRODUCT FINISH, COLOR No. 20
- 21 PRODUCT FINISH, COLOR No. 21
- 22 PRODUCT FINISH, COLOR No. 22
- 23 PRODUCT FINISH, COLOR No. 23
- 24 PRODUCT FINISH, COLOR No. 24
- 25 PRODUCT FINISH, COLOR No. 25
- 26 PRODUCT FINISH, COLOR No. 26
- 27 PRODUCT FINISH, COLOR No. 27
- 28 PRODUCT FINISH, COLOR No. 28
- 29 PRODUCT FINISH, COLOR No. 29
- 30 PRODUCT FINISH, COLOR No. 30
- 31 PRODUCT FINISH, COLOR No. 31
- 32 PRODUCT FINISH, COLOR No. 32
- 33 PRODUCT FINISH, COLOR No. 33
- 34 PRODUCT FINISH, COLOR No. 34
- 35 PRODUCT FINISH, COLOR No. 35
- 36 PRODUCT FINISH, COLOR No. 36
- 37 PRODUCT FINISH, COLOR No. 37
- 38 PRODUCT FINISH, COLOR No. 38
- 39 PRODUCT FINISH, COLOR No. 39
- 40 PRODUCT FINISH, COLOR No. 40
- 41 PRODUCT FINISH, COLOR No. 41
- 42 PRODUCT FINISH, COLOR No. 42
- 43 PRODUCT FINISH, COLOR No. 43
- 44 PRODUCT FINISH, COLOR No. 44
- 45 PRODUCT FINISH, COLOR No. 45
- 46 PRODUCT FINISH, COLOR No. 46
- 47 PRODUCT FINISH, COLOR No. 47
- 48 PRODUCT FINISH, COLOR No. 48
- 49 PRODUCT FINISH, COLOR No. 49
- 50 PRODUCT FINISH, COLOR No. 50
- 51 PRODUCT FINISH, COLOR No. 51
- 52 PRODUCT FINISH, COLOR No. 52
- 53 PRODUCT FINISH, COLOR No. 53
- 54 PRODUCT FINISH, COLOR No. 54
- 55 PRODUCT FINISH, COLOR No. 55
- 56 PRODUCT FINISH, COLOR No. 56
- 57 PRODUCT FINISH, COLOR No. 57
- 58 PRODUCT FINISH, COLOR No. 58
- 59 PRODUCT FINISH, COLOR No. 59
- 60 PRODUCT FINISH, COLOR No. 60
- 61 PRODUCT FINISH, COLOR No. 61
- 62 PRODUCT FINISH, COLOR No. 62
- 63 PRODUCT FINISH, COLOR No. 63
- 64 PRODUCT FINISH, COLOR No. 64
- 65 PRODUCT FINISH, COLOR No. 65
- 66 PRODUCT FINISH, COLOR No. 66
- 67 PRODUCT FINISH, COLOR No. 67
- 68 PRODUCT FINISH, COLOR No. 68
- 69 PRODUCT FINISH, COLOR No. 69
- 70 PRODUCT FINISH, COLOR No. 70
- 71 PRODUCT FINISH, COLOR No. 71
- 72 PRODUCT FINISH, COLOR No. 72
- 73 PRODUCT FINISH, COLOR No. 73
- 74 PRODUCT FINISH, COLOR No. 74
- 75 PRODUCT FINISH, COLOR No. 75
- 76 PRODUCT FINISH, COLOR No. 76
- 77 PRODUCT FINISH, COLOR No. 77
- 78 PRODUCT FINISH, COLOR No. 78
- 79 PRODUCT FINISH, COLOR No. 79
- 80 PRODUCT FINISH, COLOR No. 80
- 81 PRODUCT FINISH, COLOR No. 81
- 82 PRODUCT FINISH, COLOR No. 82
- 83 PRODUCT FINISH, COLOR No. 83
- 84 PRODUCT FINISH, COLOR No. 84
- 85 PRODUCT FINISH, COLOR No. 85
- 86 PRODUCT FINISH, COLOR No. 86
- 87 PRODUCT FINISH, COLOR No. 87
- 88 PRODUCT FINISH, COLOR No. 88
- 89 PRODUCT FINISH, COLOR No. 89
- 90 PRODUCT FINISH, COLOR No. 90
- 91 PRODUCT FINISH, COLOR No. 91
- 92 PRODUCT FINISH, COLOR No. 92
- 93 PRODUCT FINISH, COLOR No. 93
- 94 PRODUCT FINISH, COLOR No. 94
- 95 PRODUCT FINISH, COLOR No. 95
- 96 PRODUCT FINISH, COLOR No. 96
- 97 PRODUCT FINISH, COLOR No. 97
- 98 PRODUCT FINISH, COLOR No. 98
- 99 PRODUCT FINISH, COLOR No. 99
- 100 PRODUCT FINISH, COLOR No. 100

NOT TO BE USED
FOR CONSTRUCTION

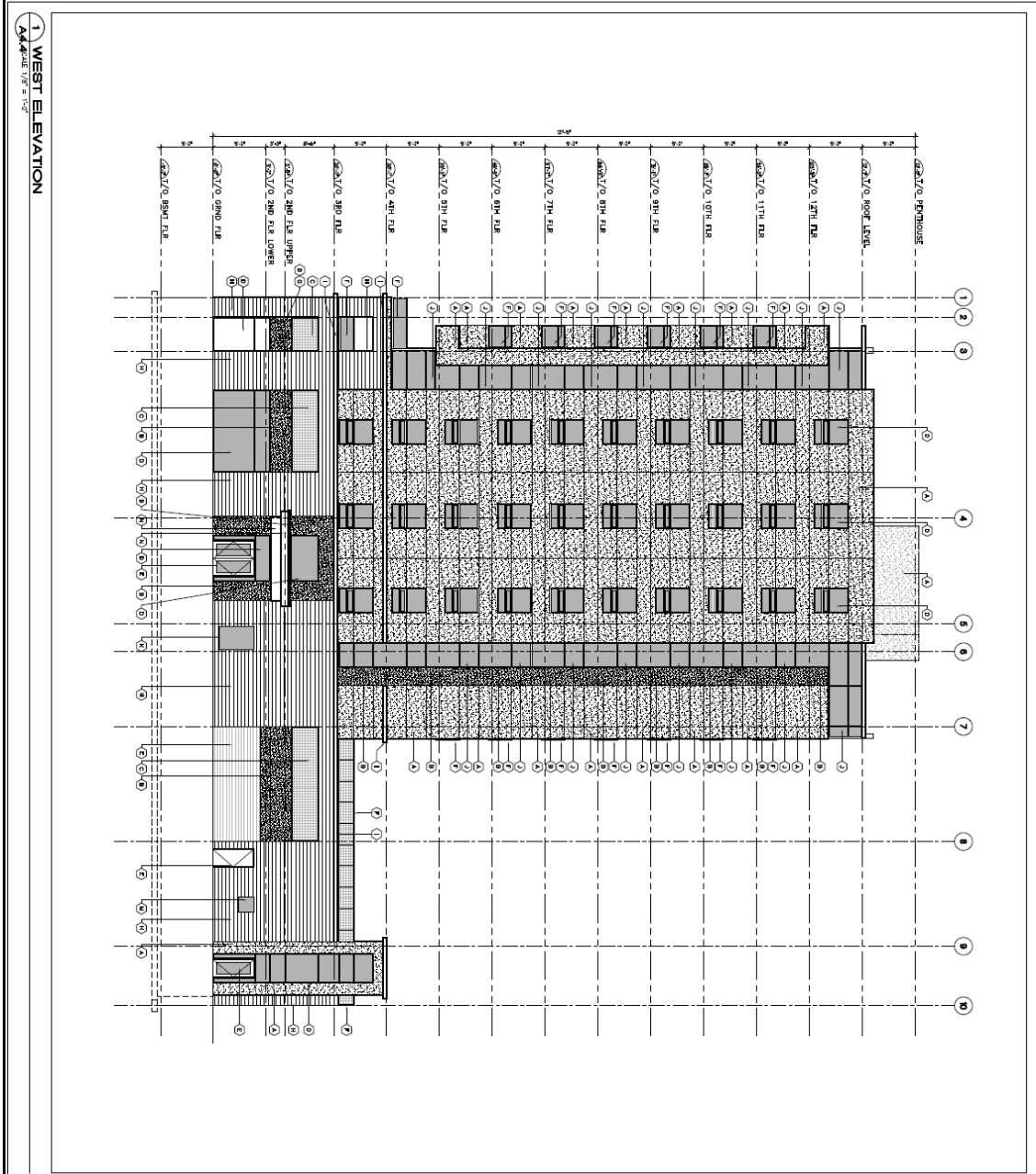
**PROPOSED APARTMENT BUILDING
CANNON & CATHCART
VRANCOR GROUP**

220 - 222 CANNON STREET EAST
HAMILTON, ONTARIO

DATE: 13.03.17
DRAWN BY: A.J. JEFFE
CHECKED: AS NOTED
DATE: NOV. 2017

**LINTACK ARCHITECTS
INCORPORATED**

244 JAMES STREET SOUTH, HAMILTON, ONTARIO, L8P 3K3
T: 905.522.6161 • F: 905.522.2209 • E: info@lntack.com
www.lntack.com



1 WEST ELEVATION
Scale: 1/8" = 1'-0"

EXTERIOR FINISH LEGEND

- 1. STAINLESS STEEL (INCLUDE TO WEST ELEVATION)
- 2. BRICK (INCLUDE TO WEST ELEVATION)
- 3. BRICK (INCLUDE TO WEST ELEVATION)
- 4. BRICK (INCLUDE TO WEST ELEVATION)
- 5. BRICK (INCLUDE TO WEST ELEVATION)
- 6. BRICK (INCLUDE TO WEST ELEVATION)
- 7. BRICK (INCLUDE TO WEST ELEVATION)
- 8. BRICK (INCLUDE TO WEST ELEVATION)
- 9. BRICK (INCLUDE TO WEST ELEVATION)
- 10. BRICK (INCLUDE TO WEST ELEVATION)
- 11. BRICK (INCLUDE TO WEST ELEVATION)
- 12. BRICK (INCLUDE TO WEST ELEVATION)
- 13. BRICK (INCLUDE TO WEST ELEVATION)
- 14. BRICK (INCLUDE TO WEST ELEVATION)
- 15. BRICK (INCLUDE TO WEST ELEVATION)
- 16. BRICK (INCLUDE TO WEST ELEVATION)
- 17. BRICK (INCLUDE TO WEST ELEVATION)
- 18. BRICK (INCLUDE TO WEST ELEVATION)
- 19. BRICK (INCLUDE TO WEST ELEVATION)
- 20. BRICK (INCLUDE TO WEST ELEVATION)
- 21. BRICK (INCLUDE TO WEST ELEVATION)
- 22. BRICK (INCLUDE TO WEST ELEVATION)
- 23. BRICK (INCLUDE TO WEST ELEVATION)
- 24. BRICK (INCLUDE TO WEST ELEVATION)
- 25. BRICK (INCLUDE TO WEST ELEVATION)
- 26. BRICK (INCLUDE TO WEST ELEVATION)
- 27. BRICK (INCLUDE TO WEST ELEVATION)
- 28. BRICK (INCLUDE TO WEST ELEVATION)
- 29. BRICK (INCLUDE TO WEST ELEVATION)
- 30. BRICK (INCLUDE TO WEST ELEVATION)
- 31. BRICK (INCLUDE TO WEST ELEVATION)
- 32. BRICK (INCLUDE TO WEST ELEVATION)
- 33. BRICK (INCLUDE TO WEST ELEVATION)
- 34. BRICK (INCLUDE TO WEST ELEVATION)
- 35. BRICK (INCLUDE TO WEST ELEVATION)
- 36. BRICK (INCLUDE TO WEST ELEVATION)
- 37. BRICK (INCLUDE TO WEST ELEVATION)
- 38. BRICK (INCLUDE TO WEST ELEVATION)
- 39. BRICK (INCLUDE TO WEST ELEVATION)
- 40. BRICK (INCLUDE TO WEST ELEVATION)
- 41. BRICK (INCLUDE TO WEST ELEVATION)
- 42. BRICK (INCLUDE TO WEST ELEVATION)
- 43. BRICK (INCLUDE TO WEST ELEVATION)
- 44. BRICK (INCLUDE TO WEST ELEVATION)
- 45. BRICK (INCLUDE TO WEST ELEVATION)
- 46. BRICK (INCLUDE TO WEST ELEVATION)
- 47. BRICK (INCLUDE TO WEST ELEVATION)
- 48. BRICK (INCLUDE TO WEST ELEVATION)
- 49. BRICK (INCLUDE TO WEST ELEVATION)
- 50. BRICK (INCLUDE TO WEST ELEVATION)
- 51. BRICK (INCLUDE TO WEST ELEVATION)
- 52. BRICK (INCLUDE TO WEST ELEVATION)
- 53. BRICK (INCLUDE TO WEST ELEVATION)
- 54. BRICK (INCLUDE TO WEST ELEVATION)
- 55. BRICK (INCLUDE TO WEST ELEVATION)
- 56. BRICK (INCLUDE TO WEST ELEVATION)
- 57. BRICK (INCLUDE TO WEST ELEVATION)
- 58. BRICK (INCLUDE TO WEST ELEVATION)
- 59. BRICK (INCLUDE TO WEST ELEVATION)
- 60. BRICK (INCLUDE TO WEST ELEVATION)
- 61. BRICK (INCLUDE TO WEST ELEVATION)
- 62. BRICK (INCLUDE TO WEST ELEVATION)
- 63. BRICK (INCLUDE TO WEST ELEVATION)
- 64. BRICK (INCLUDE TO WEST ELEVATION)
- 65. BRICK (INCLUDE TO WEST ELEVATION)
- 66. BRICK (INCLUDE TO WEST ELEVATION)
- 67. BRICK (INCLUDE TO WEST ELEVATION)
- 68. BRICK (INCLUDE TO WEST ELEVATION)
- 69. BRICK (INCLUDE TO WEST ELEVATION)
- 70. BRICK (INCLUDE TO WEST ELEVATION)
- 71. BRICK (INCLUDE TO WEST ELEVATION)
- 72. BRICK (INCLUDE TO WEST ELEVATION)
- 73. BRICK (INCLUDE TO WEST ELEVATION)
- 74. BRICK (INCLUDE TO WEST ELEVATION)
- 75. BRICK (INCLUDE TO WEST ELEVATION)
- 76. BRICK (INCLUDE TO WEST ELEVATION)
- 77. BRICK (INCLUDE TO WEST ELEVATION)
- 78. BRICK (INCLUDE TO WEST ELEVATION)
- 79. BRICK (INCLUDE TO WEST ELEVATION)
- 80. BRICK (INCLUDE TO WEST ELEVATION)
- 81. BRICK (INCLUDE TO WEST ELEVATION)
- 82. BRICK (INCLUDE TO WEST ELEVATION)
- 83. BRICK (INCLUDE TO WEST ELEVATION)
- 84. BRICK (INCLUDE TO WEST ELEVATION)
- 85. BRICK (INCLUDE TO WEST ELEVATION)
- 86. BRICK (INCLUDE TO WEST ELEVATION)
- 87. BRICK (INCLUDE TO WEST ELEVATION)
- 88. BRICK (INCLUDE TO WEST ELEVATION)
- 89. BRICK (INCLUDE TO WEST ELEVATION)
- 90. BRICK (INCLUDE TO WEST ELEVATION)
- 91. BRICK (INCLUDE TO WEST ELEVATION)
- 92. BRICK (INCLUDE TO WEST ELEVATION)
- 93. BRICK (INCLUDE TO WEST ELEVATION)
- 94. BRICK (INCLUDE TO WEST ELEVATION)
- 95. BRICK (INCLUDE TO WEST ELEVATION)
- 96. BRICK (INCLUDE TO WEST ELEVATION)
- 97. BRICK (INCLUDE TO WEST ELEVATION)
- 98. BRICK (INCLUDE TO WEST ELEVATION)
- 99. BRICK (INCLUDE TO WEST ELEVATION)
- 100. BRICK (INCLUDE TO WEST ELEVATION)

NOT TO BE USED
FOR CONSTRUCTION

<p>PROPOSED APARTMENT BUILDING CANNON & CATHCART VRANCOR GROUP 220 - 222 CANNON STREET EAST HAMILTON, ONTARIO</p>		<p>DATE: 13/07/15 DRAWN BY: A.L. JEFF CHECKED BY: JB DATE: NOV 2013</p>	<p>SCALE: AS SHOWN DATE: NOV 2013</p>	<p>1. WEST ELEVATION 2. EAST ELEVATION 3. SOUTH ELEVATION 4. NORTH ELEVATION</p>	<p>FOR EXAM LINTACK ARCHITECTS INC REGISTERED ARCHITECTS ONTARIO 1900 SHEPPARD AVENUE EAST SUITE 100 SCARBOROUGH, ONTARIO M1S 1T2 TEL: 416-291-1111 WWW.LINTACKARCHITECTS.COM</p>	<p>LINTACK ARCHITECTS INCORPORATED 244 JAMES STREET SOUTH - HAMILTON, ONTARIO L8P 3K3 TEL: 905.522.6161 • FAX: 905.522.2000 • E: info@lntack.com www.lntack.com</p>
--	--	---	---	--	---	--