



Hamilton
Public Works

Traffic Operations & Engineering

Delineated Bicycle Lane Overview for the Claremont Access

January 19, 2016

Providing services that bring our City to life !

Presentation Outline

- 1) Purpose of the presentation
- 2) Council direction
- 3) Cycling Master Plan/ Transportation Master Plan
- 4) Escarpment crossings
- 5) Planned cycling infrastructure projects for 2016
- 6) Claremont Access - Cycling connectivity
- 7) Design considerations
- 8) Initial Design Concept
- 9) Next steps

- Community
- People
- Processes
- Finance



Hamilton
Public Works

Council Direction

On December 9, 2015, Council approved a Motion for a Delineated Bicycle Lane on the Claremont Access.

The motion stated:

WHEREAS, the City of Hamilton's Cycling Master Plan is intended to guide the development and operation of its cycling infrastructure for the next twenty years;

THEREFORE BE IT RESOLVED:

That staff be directed to review the options and costs associated with providing a delineated bicycle lane up the Claremont Access and report back to the January 19, 2016 General Issues Committee.

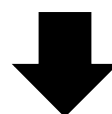
- Community
- People
- Processes
- Finance



Hamilton
Public Works

Cycling Master Plan/ Transportation Master Plan

2009 Cycling Master Plan (CMP)



2016 Transportation Master Plan
update (including cycling)

- Community
- People
- Processes
- Finance



Hamilton
Public Works



Escarpment Crossings

- 23 locations identified (CMP 2009).
 - Eight crossings currently exist – Wilson St Hill recently repaved.
- Three mountain access projects have progressed (Jolley Cut, Waterdown and Sydenham Rd).
- One mountain access project identified for 2018 (Greenville).
- Addition of bike racks on HSR buses, offer an option to traverse the escarpment.
- Four projects could be addressed with the potential Claremont project (one was identified as a medium-priority project).

→ Community
→ People
→ Processes
→ Finance



Hamilton
Public Works

Planned Cycling Infrastructure Projects for 2016

Bike Lanes:

- Highland Rd. / Winterberry Dr.
- Charlton Ave. / Herkimer St.
- Cannon St. / Britannia Ave. / Melvin Ave. (Kenilworth to Woodward)
- Upper Wentworth St. (Concession to Fennell)
- Gage Ave. (Industrial to Lawrence)
- Hunter St. (MacNab to Catharine)
- Jolley Cut downbound (sharrows)

Cycling Infrastructure as Part of Road Reconstruction Projects:

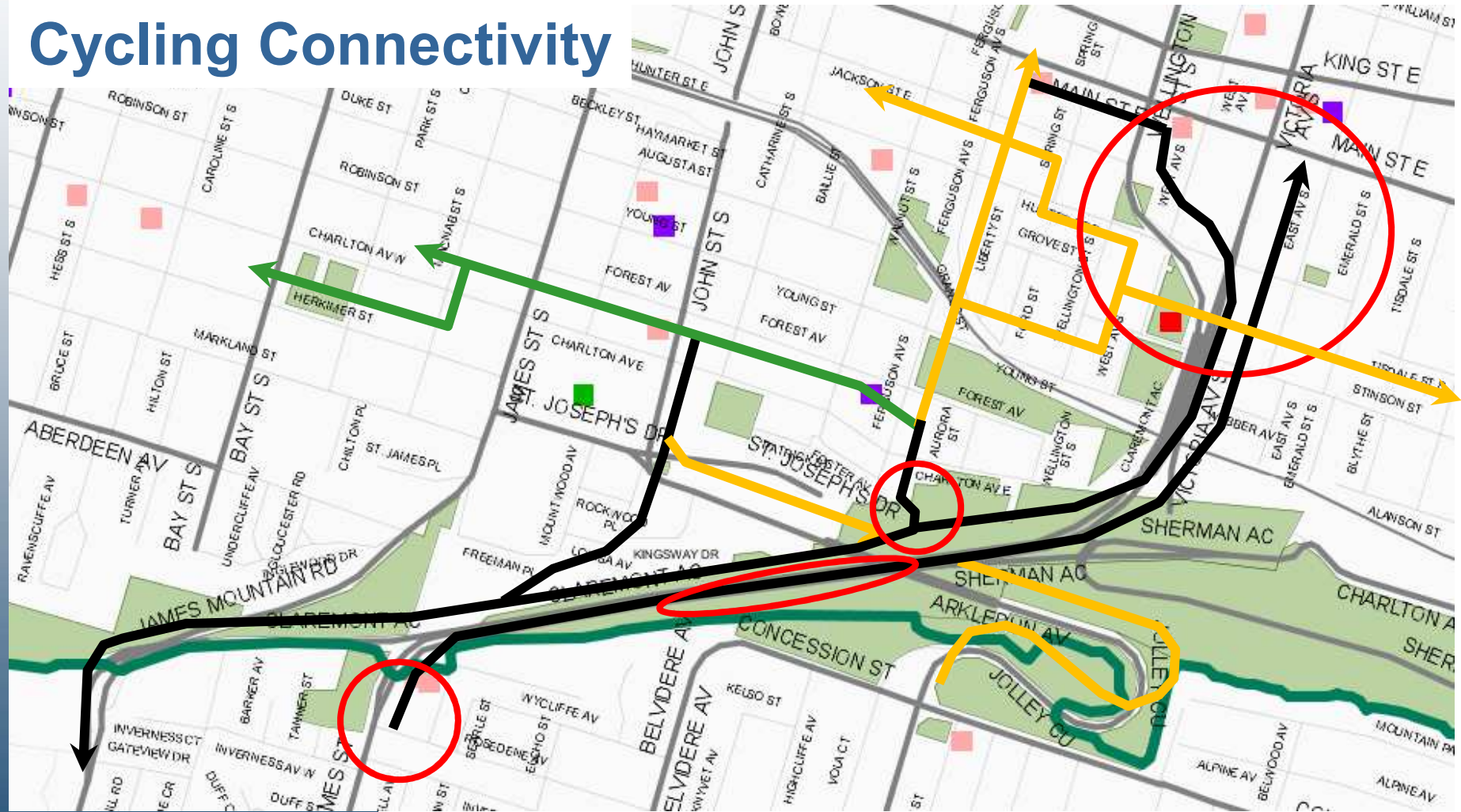
- Ridge Rd. (McNeilly to Tenth Rd E.)
- Rymal Rd. (Pritchard to Trinity Church)
- Rymal Rd. (Upper Paradise to Garth)
- Garth St. (Stone Church to Rymal)
- Upper Sherman Ave. (LINC to Stone Church)
- Upper Red Hill Valley Parkway
- Rice Ave. (Sanatorium to Mohawk/Wendover)
- Wilson St. (Seminole to Fiddlers Green)

- Community
- People
- Processes
- Finance



Hamilton
Public Works

Claremont Access Cycling Connectivity



- Existing cycling infrastructure
- Planned infrastructure
- Projects in progress
- Areas requiring resolution



Design Considerations

- Public input
- Connectivity options
- Safety considerations e.g. potential conflict points between cyclists, pedestrians and vehicles.
- Collision data
- Current & future traffic capacity & routing
- Operations & Maintenance e.g. street sweeping and winter control
- Design options
- A review of potential funding sources
- Project Co-ordination
- Project priority in the context of already approved cycling infrastructure projects.

- Community
- People
- Processes
- Finance



Hamilton
Public Works

Initial Design Concept

- Community
- People
- Processes
- Finance



Hamilton
Public Works



Staff's assumption with Council's direction was that the delineated bike lanes would be incorporated in the up bound portion of the Claremont Access.

Next Steps

- Options to be investigated in 2016 would include a review of the design considerations listed previously in Slide 8.
- Public Consultation.
- Staff to report back in the 4th quarter of 2016 with recommendations and costing for approval as part of the 2017 Capital Budget.

→ Community
→ People
→ Processes
→ Finance



Hamilton
Public Works

Questions?

- Community
- People
- Processes
- Finance



Hamilton
Public Works



Thank you!