

LOSANI
HOMES



CENTRAL PARK



City of Hamilton

Public Meeting
March 22, 2016

LOSANI
HOMES



Location Map



LOSANI
HOMES



Mount Albion
Conservation
Area

RED HILL
BUSINESS
PARK



Amenities



Best Buy



Sobeys

EAST MOUNTAIN
TRAIL LOOP



Eramosa Karst
Conservation
Area

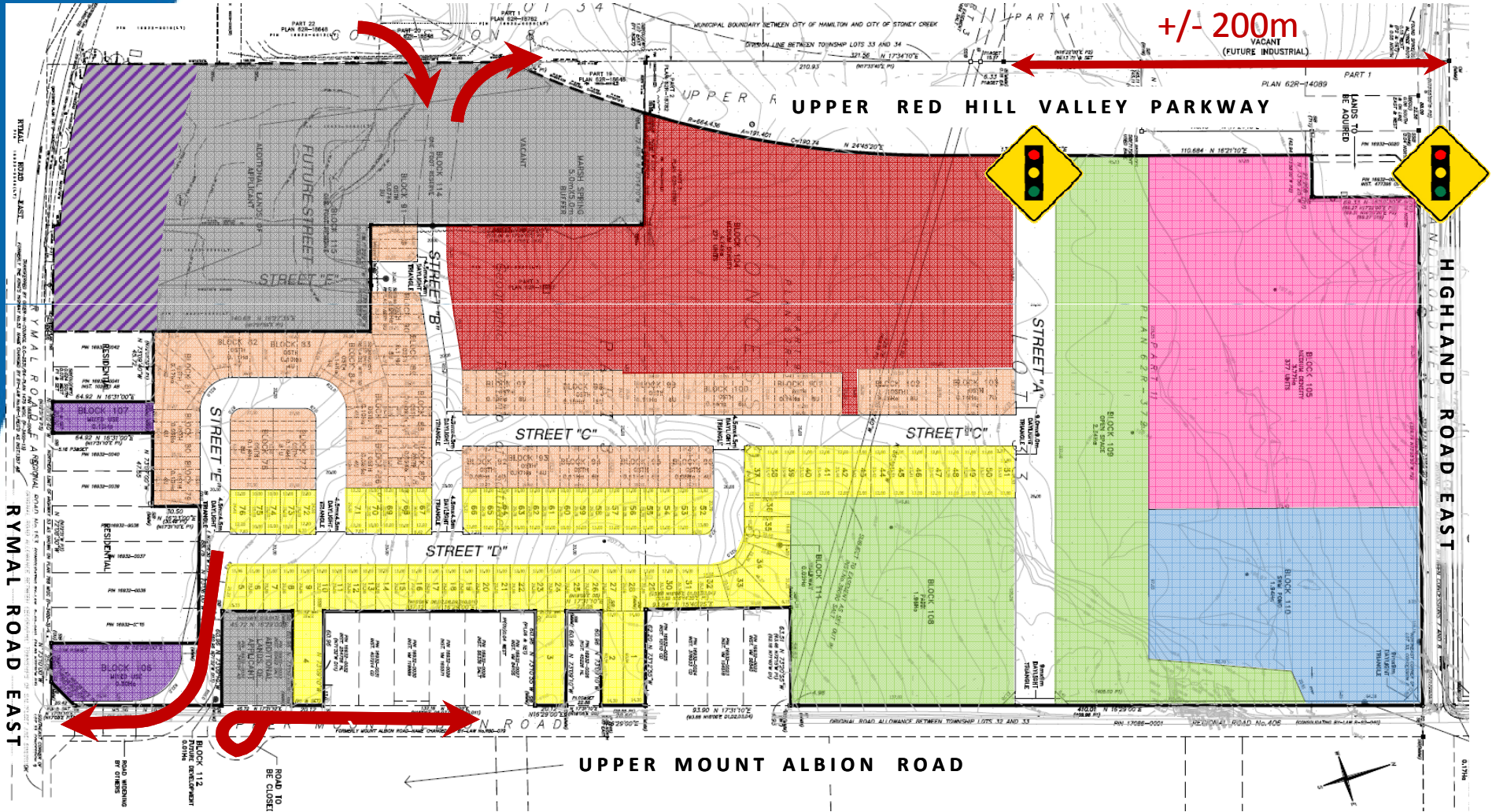


CENTRAL
PARK

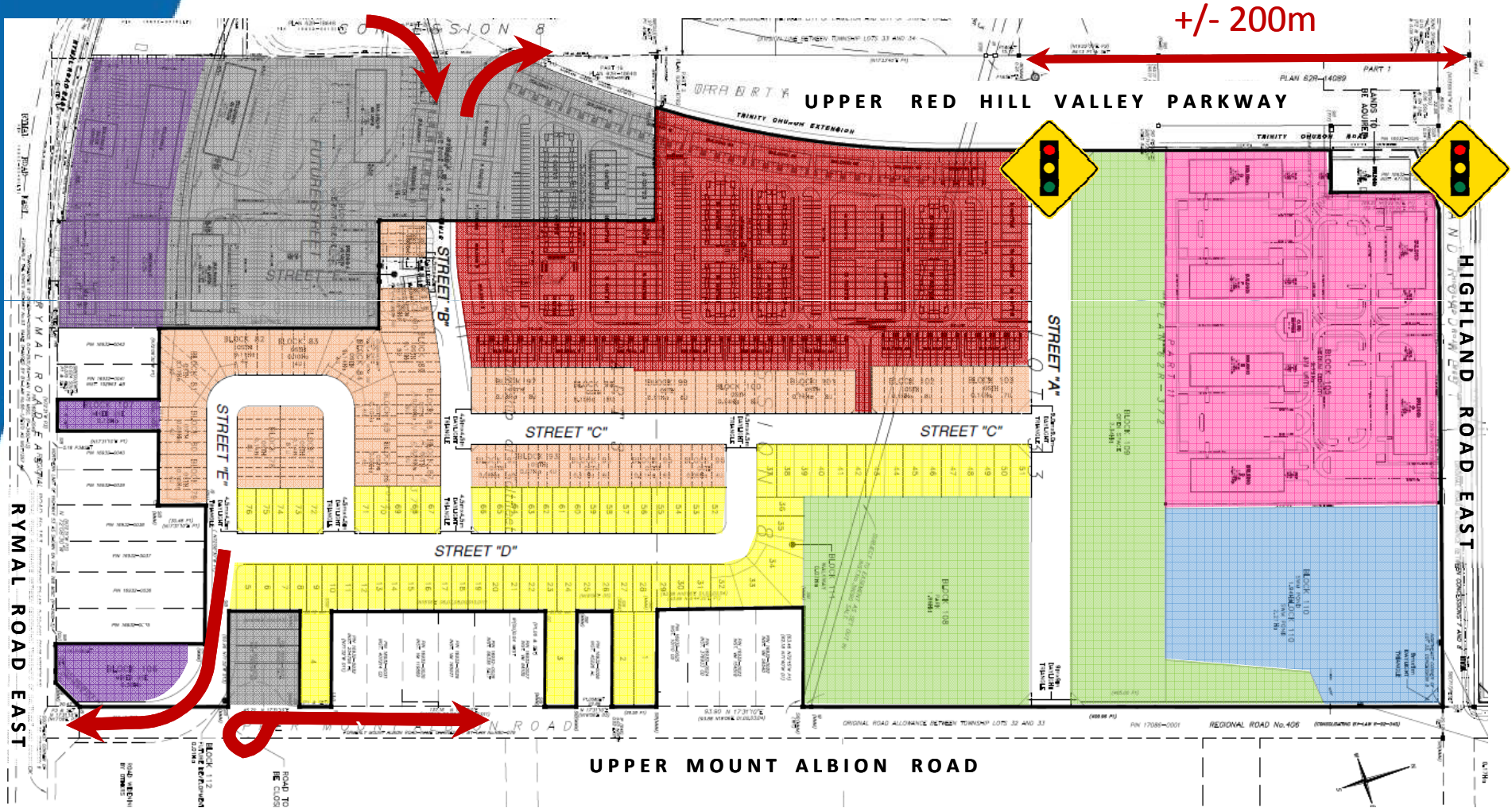
TO
VALLEY
PARK



Key Plan



Key Plan



Key Plan



Facts & Figures

- Total Area: 25.14 hectares / 62.12 acres
- +/- 871 Units
 - 76 Single Detached
 - 147 Street Townhomes
 - 271 Condo Townhomes
 - 377 Mid-Rise Apartments
- 1.95 hectare / 4.8 acre Neighbourhood Park
- 2.34 hectare / 5.8 acre Eco Passage Corridor (60.0m wide)
- Future Phase to include:
 - Mixed-Use / Commercial
 - Additional +/- 350 Residential Units

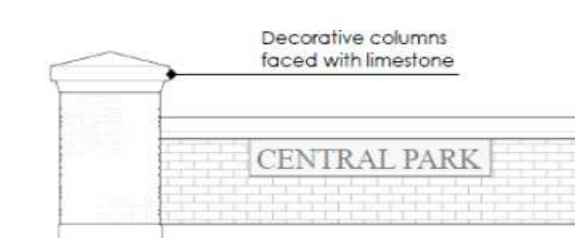
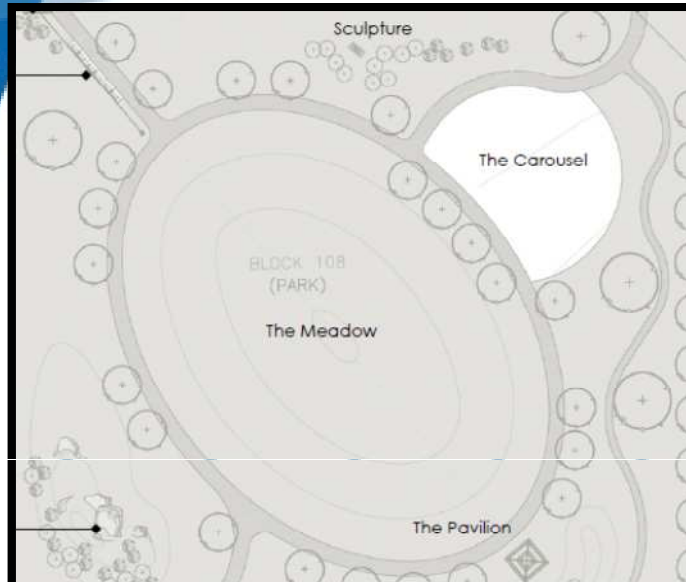


Community Features

- Comprehensive Community Plan
 - Range and Mix of Housing Types offering Affordability
- Close to Neighbourhood Amenities and Parks
 - Shopping, Entertainment, Local Schools, Jobs
- Accessible to Public Transit and Trails System
 - Eramosa Karst Conservation Area
 - Valley Park
 - Accessible to all users including seniors and the disabled (“Barrier-Free”)
- Neighbourhood Character and Community Identity
 - Enhanced Park Design and Eco Passage will create a Sense of Place
- Overdue Urbanization of Neighbourhood Roads
 - Traffic Plan for Road Closures in place to minimize disruption
 - Will work together with Ward Councillor and Community on regular construction updates / meetings



Landscape Features



Single Detached

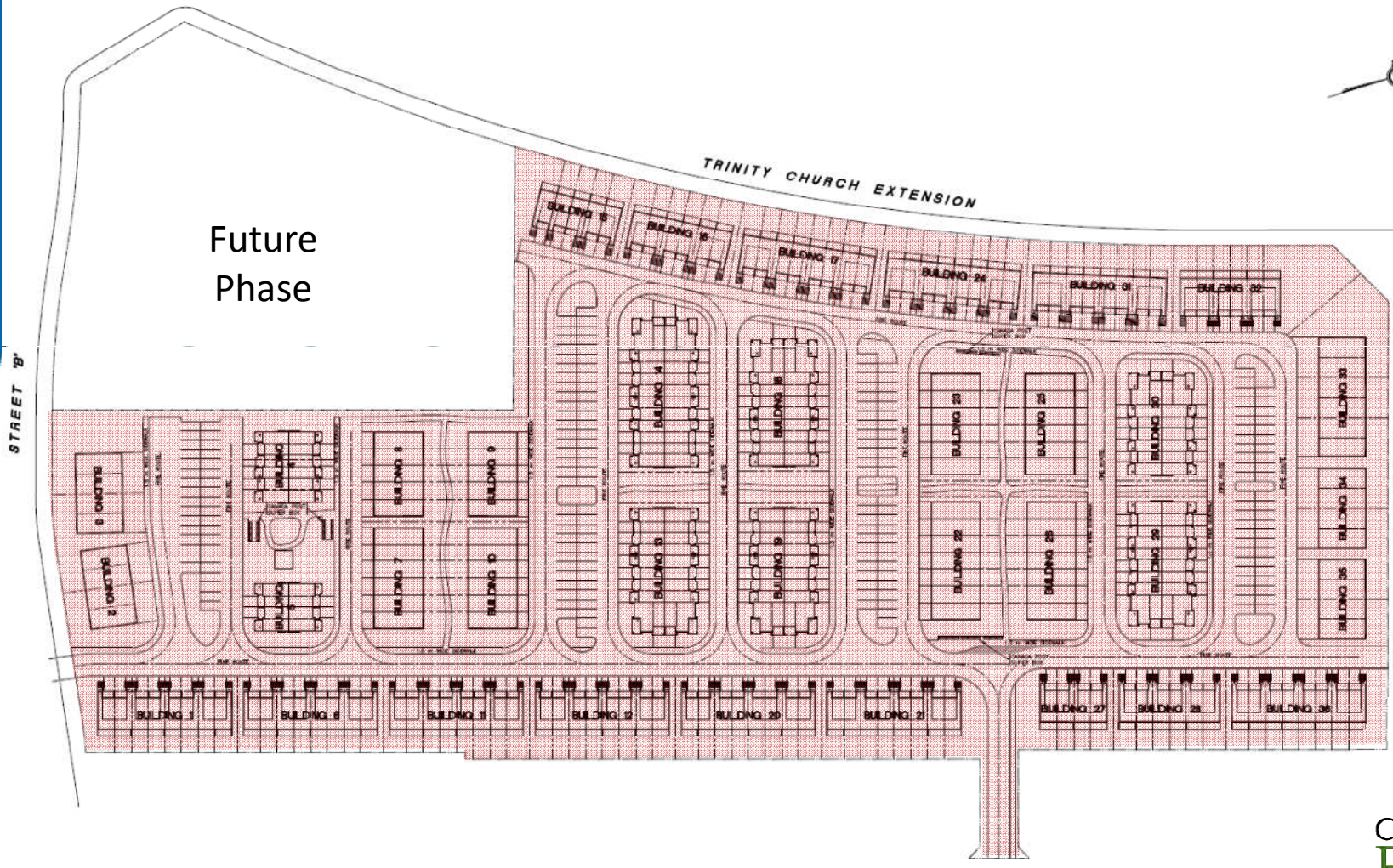


LOSANI
HOMES

Street Townhomes



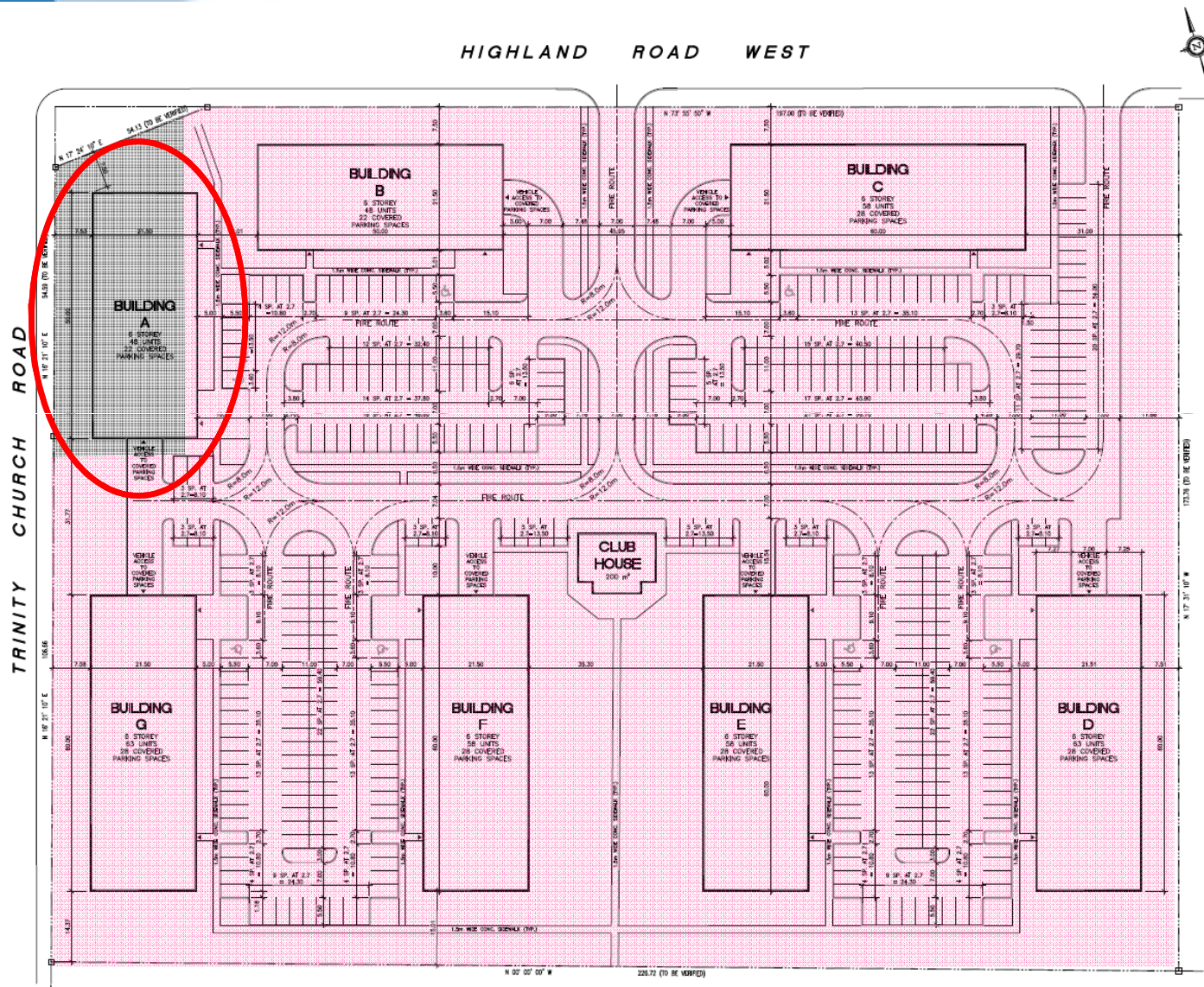
Condo Townhomes



Condo Townhomes



Mid-Rise Apartments



Mid-Rise Apartments



Commercial / Mixed Use



LOSANI
HOMES



CENTRAL PARK



City of Hamilton

Public Meeting
March 22, 2016