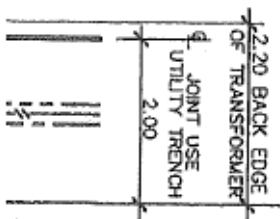
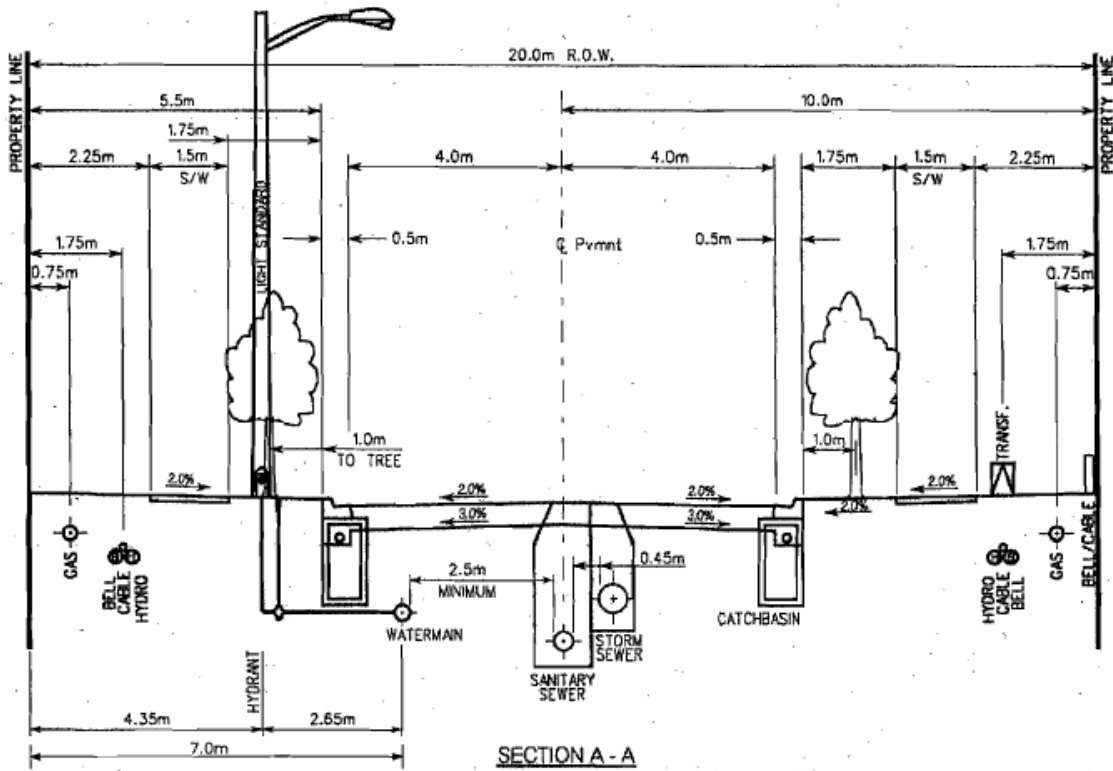
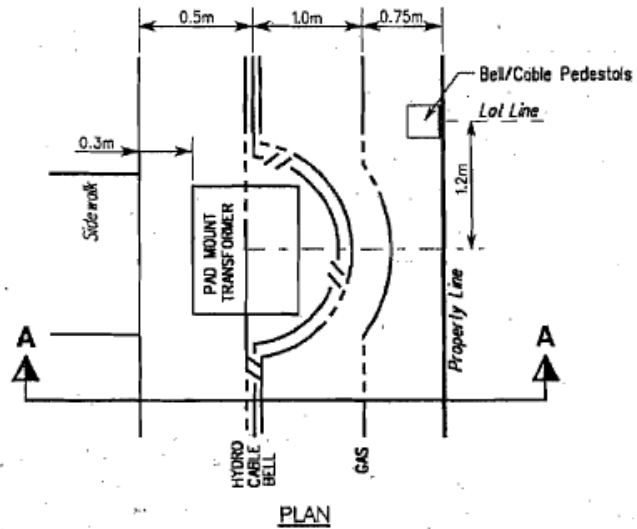


**18.0m ROAD ALLOWANCE (MODIFIED)**  
**(EMICK DRIVE)**  
SCALE 1:100





<b>MINIMUM DEPTH OF COVER</b>	
SANITARY SEWER	- 2.75m
STORM SEWER	- 1.2m
WATERMAIN	- 1.6m
HYDRO	- 0.9m
CABLE	- 0.9m
BELL	- 0.9m
GAS	- 0.6m



City of Hamilton  
Planning and Economic Development Department

MANAGER OF DEVELOPMENT ENGINEERING

LOCAL URBAN RESIDENTIAL - 20.0m R.O.W.

DATE  
June, 2006

REV No  
O.P.S.D. No (modified)

HAMILTON STD No  
PED- 100.01