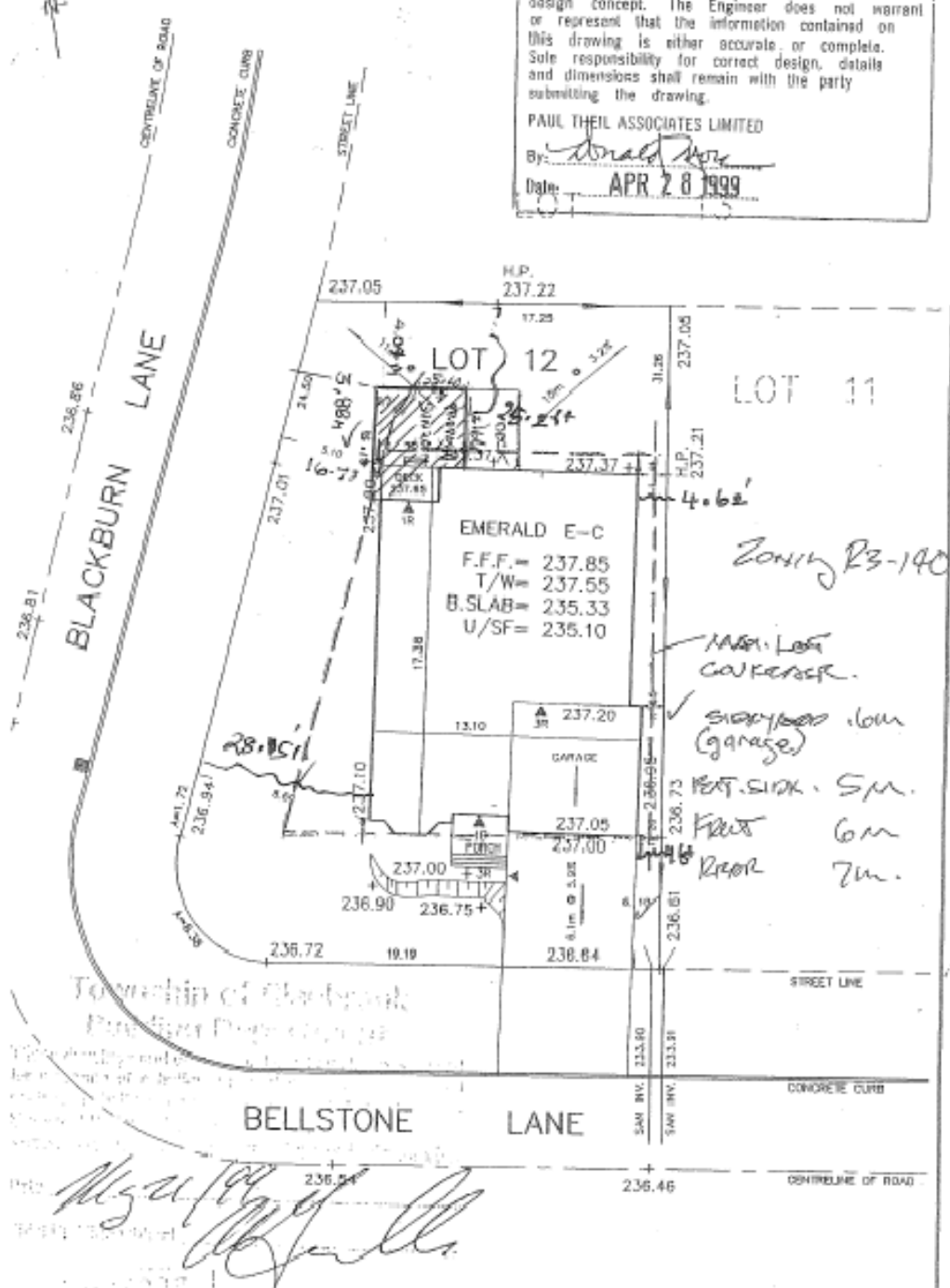


REVIEWED AS MODIFIED ()
 REVISE AND RE-SUBMIT ()
 NOT REVIEWED ()

Reviewed only as to general conformity with the design concept. The Engineer does not warrant or represent that the information contained on this drawing is either accurate or complete. Sole responsibility for correct design, details and dimensions shall remain with the party submitting the drawing.

PAUL THEIL ASSOCIATES LIMITED
 By: *Donald Theil*
 Date: APR 28 1999



- PROPOSED ELEVATION
- SANITARY CONNECTIONS
- PROPOSED MANHOLE
- BELL PEDESTAL
- CABLE PEDESTAL
- WATER CONNECTION
- CATCH BASIN
- DOOR WITH RISER
- STREET LIGHT
- HIGH POINT
- DOWNSPOUT WITH DIRECTION

NOTES:
 FOUNDATION DRAINS TO BE DISCHARGED, VIA SUMP PUMPS, TO THE SIDE YARD SWALE AND DIRECTED TO THE STREET LINE.

fp RADY-PENTEK & EDWARD SURVEYING LTD.
 ONTARIO LAND SURVEYORS
 465 WILSON AVENUE, DOWNSVIEW, ONTARIO, M3H 1T9
 TEL: 416-835-5000 FAX: 416-835-5001
 DRAWN: K.S. DATE: APR 23, 1999

SITE AND GRADING PLAN

LOT: 12
 PLAN: 62M - 873

FOR: CASTLEGREEN BUILDING CORPORATION

SCALE: 1:250

CAD FILE 99-030 GP
 JOB No. 99-030