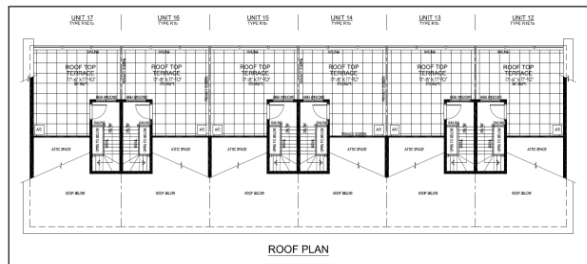


GENERAL NOTES
 1. REFER TO ALL OTHER DRAWINGS FOR DETAILS.
 2. ALL WORK SHALL BE IN ACCORDANCE WITH THE 2012 INTERNATIONAL RESIDENTIAL CODE BOOK, AS AMENDED BY THE CITY OF CHICAGO.
 3. ALL MATERIALS SHALL BE APPROVED BY THE ARCHITECT.
 4. ALL WORK SHALL BE IN ACCORDANCE WITH THE 2012 INTERNATIONAL RESIDENTIAL CODE BOOK, AS AMENDED BY THE CITY OF CHICAGO.
 5. ALL WORK SHALL BE IN ACCORDANCE WITH THE 2012 INTERNATIONAL RESIDENTIAL CODE BOOK, AS AMENDED BY THE CITY OF CHICAGO.
 6. ALL WORK SHALL BE IN ACCORDANCE WITH THE 2012 INTERNATIONAL RESIDENTIAL CODE BOOK, AS AMENDED BY THE CITY OF CHICAGO.
 7. ALL WORK SHALL BE IN ACCORDANCE WITH THE 2012 INTERNATIONAL RESIDENTIAL CODE BOOK, AS AMENDED BY THE CITY OF CHICAGO.
 8. ALL WORK SHALL BE IN ACCORDANCE WITH THE 2012 INTERNATIONAL RESIDENTIAL CODE BOOK, AS AMENDED BY THE CITY OF CHICAGO.
 9. ALL WORK SHALL BE IN ACCORDANCE WITH THE 2012 INTERNATIONAL RESIDENTIAL CODE BOOK, AS AMENDED BY THE CITY OF CHICAGO.
 10. ALL WORK SHALL BE IN ACCORDANCE WITH THE 2012 INTERNATIONAL RESIDENTIAL CODE BOOK, AS AMENDED BY THE CITY OF CHICAGO.



- REVISIONS**
- 1. REVISED PER COMMENTS
 - 2. REVISED PER COMMENTS
 - 3. REVISED PER COMMENTS
 - 4. REVISED PER COMMENTS
 - 5. REVISED PER COMMENTS
 - 6. REVISED PER COMMENTS
 - 7. REVISED PER COMMENTS
 - 8. REVISED PER COMMENTS
 - 9. REVISED PER COMMENTS
 - 10. REVISED PER COMMENTS
 - 11. REVISED PER COMMENTS
 - 12. REVISED PER COMMENTS
 - 13. REVISED PER COMMENTS
 - 14. REVISED PER COMMENTS
 - 15. REVISED PER COMMENTS
 - 16. REVISED PER COMMENTS
 - 17. REVISED PER COMMENTS
 - 18. REVISED PER COMMENTS
 - 19. REVISED PER COMMENTS
 - 20. REVISED PER COMMENTS



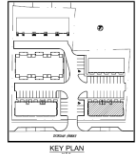
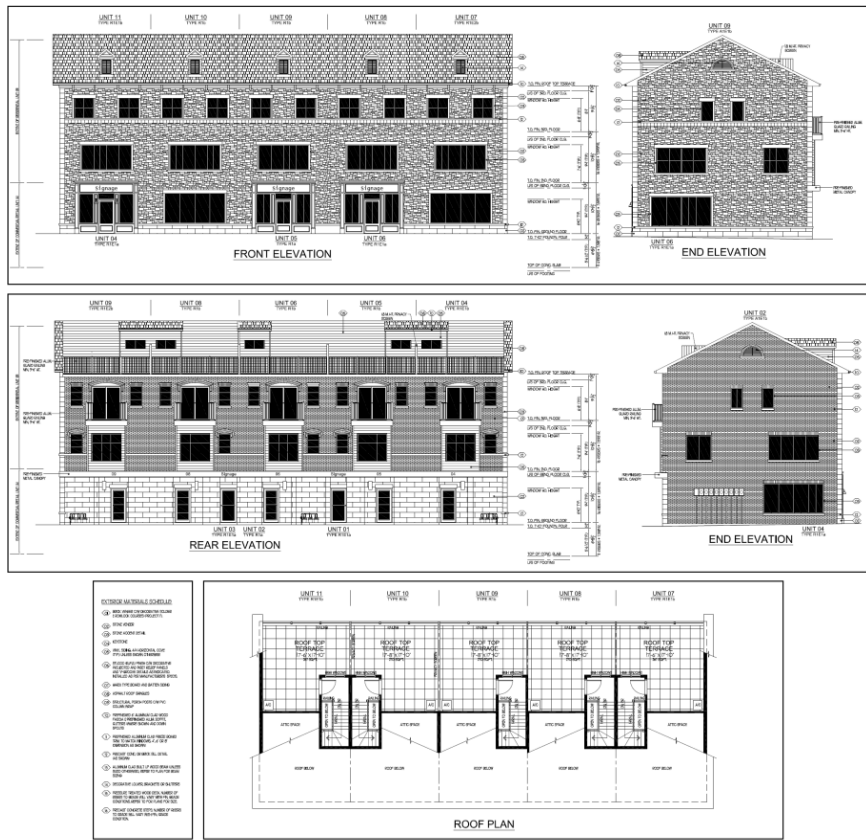
BUILDING 1

NO.	DESCRIPTION	DATE
1	ISSUED FOR PERMIT	10/15/14
2	REVISED PER COMMENTS	11/10/14
3	REVISED PER COMMENTS	12/15/14
4	REVISED PER COMMENTS	01/15/15
5	REVISED PER COMMENTS	02/15/15
6	REVISED PER COMMENTS	03/15/15
7	REVISED PER COMMENTS	04/15/15
8	REVISED PER COMMENTS	05/15/15
9	REVISED PER COMMENTS	06/15/15
10	REVISED PER COMMENTS	07/15/15
11	REVISED PER COMMENTS	08/15/15
12	REVISED PER COMMENTS	09/15/15
13	REVISED PER COMMENTS	10/15/15
14	REVISED PER COMMENTS	11/15/15
15	REVISED PER COMMENTS	12/15/15
16	REVISED PER COMMENTS	01/15/16
17	REVISED PER COMMENTS	02/15/16
18	REVISED PER COMMENTS	03/15/16
19	REVISED PER COMMENTS	04/15/16
20	REVISED PER COMMENTS	05/15/16



DUNAS STREET CONDOMINIUM TOWNHOMES
 14032
 BUILDING 1 ELEVATIONS AND ROOF PLAN

SPA2



GENERAL NOTES:

1. SEE ALL OTHER ELEVATIONS, SECTIONS, AND ROOF PLAN FOR DETAILS.
2. ALL DIMENSIONS ARE TO FACE UNLESS OTHERWISE NOTED.
3. CONCRETE FOUNDATION: FOUNDATION SHALL BE CONCRETE ON GRADE WITH 4" REINFORCING BARS.
4. ALL MATERIALS SHALL BE AS SHOWN OR APPROVED BY THE ARCHITECT.
5. ALL MATERIALS SHALL BE AS SHOWN OR APPROVED BY THE ARCHITECT.
6. ALL MATERIALS SHALL BE AS SHOWN OR APPROVED BY THE ARCHITECT.
7. ALL MATERIALS SHALL BE AS SHOWN OR APPROVED BY THE ARCHITECT.
8. ALL MATERIALS SHALL BE AS SHOWN OR APPROVED BY THE ARCHITECT.
9. ALL MATERIALS SHALL BE AS SHOWN OR APPROVED BY THE ARCHITECT.
10. ALL MATERIALS SHALL BE AS SHOWN OR APPROVED BY THE ARCHITECT.

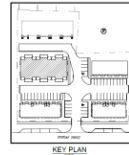
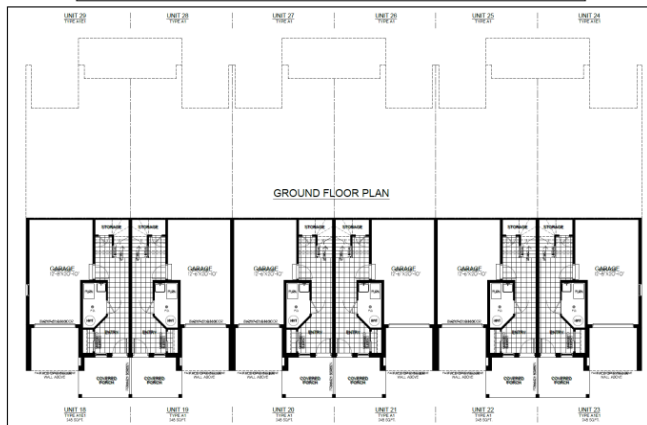
NO.	DESCRIPTION	DATE
1	ISSUED FOR PERMITS	08/15/2018
2	ISSUED FOR PERMITS	08/15/2018
3	ISSUED FOR PERMITS	08/15/2018
4	ISSUED FOR PERMITS	08/15/2018
5	ISSUED FOR PERMITS	08/15/2018
6	ISSUED FOR PERMITS	08/15/2018
7	ISSUED FOR PERMITS	08/15/2018
8	ISSUED FOR PERMITS	08/15/2018
9	ISSUED FOR PERMITS	08/15/2018
10	ISSUED FOR PERMITS	08/15/2018

FABIANI ARCHITECTS, LTD.

CONCRETE ASSOCIATION OF NORTH CAROLINA

DUNN'S STREET CONDOMINIUM TOWNHOMES
 14032
 SPA4

BUILDING 2



- EXTERIOR MATERIALS TO BE USED**
- ① BRICK
 - ② SIDING
 - ③ BRICK
 - ④ BRICK
 - ⑤ BRICK
 - ⑥ BRICK
 - ⑦ BRICK
 - ⑧ BRICK
 - ⑨ BRICK
 - ⑩ BRICK
 - ⑪ BRICK
 - ⑫ BRICK
 - ⑬ BRICK
 - ⑭ BRICK
 - ⑮ BRICK
 - ⑯ BRICK
 - ⑰ BRICK
 - ⑱ BRICK
 - ⑲ BRICK
 - ⑳ BRICK
 - ㉑ BRICK
 - ㉒ BRICK
 - ㉓ BRICK
 - ㉔ BRICK
 - ㉕ BRICK
 - ㉖ BRICK
 - ㉗ BRICK
 - ㉘ BRICK
 - ㉙ BRICK
 - ㉚ BRICK
 - ㉛ BRICK
 - ㉜ BRICK
 - ㉝ BRICK
 - ㉞ BRICK
 - ㉟ BRICK
 - ㊱ BRICK
 - ㊲ BRICK
 - ㊳ BRICK
 - ㊴ BRICK
 - ㊵ BRICK
 - ㊶ BRICK
 - ㊷ BRICK
 - ㊸ BRICK
 - ㊹ BRICK
 - ㊺ BRICK

GENERAL NOTES:

1. SEE ALL OTHER DRAWINGS FOR DETAILS.
2. ALL WORK SHALL BE IN ACCORDANCE WITH THE CITY OF OREGON BUILDING CODE.
3. ALL WORK SHALL BE IN ACCORDANCE WITH THE CITY OF OREGON PLUMBING CODE.
4. ALL WORK SHALL BE IN ACCORDANCE WITH THE CITY OF OREGON ELECTRICAL CODE.
5. ALL WORK SHALL BE IN ACCORDANCE WITH THE CITY OF OREGON MECHANICAL CODE.
6. ALL WORK SHALL BE IN ACCORDANCE WITH THE CITY OF OREGON FIRE CODE.
7. ALL WORK SHALL BE IN ACCORDANCE WITH THE CITY OF OREGON ENERGY CODE.
8. ALL WORK SHALL BE IN ACCORDANCE WITH THE CITY OF OREGON SAFETY CODE.
9. ALL WORK SHALL BE IN ACCORDANCE WITH THE CITY OF OREGON HEALTH CODE.
10. ALL WORK SHALL BE IN ACCORDANCE WITH THE CITY OF OREGON ENVIRONMENTAL CODE.
11. ALL WORK SHALL BE IN ACCORDANCE WITH THE CITY OF OREGON TRANSPORTATION CODE.
12. ALL WORK SHALL BE IN ACCORDANCE WITH THE CITY OF OREGON COMMUNITY DEVELOPMENT CODE.
13. ALL WORK SHALL BE IN ACCORDANCE WITH THE CITY OF OREGON LAND USE CODE.
14. ALL WORK SHALL BE IN ACCORDANCE WITH THE CITY OF OREGON ZONING CODE.
15. ALL WORK SHALL BE IN ACCORDANCE WITH THE CITY OF OREGON HOUSING CODE.
16. ALL WORK SHALL BE IN ACCORDANCE WITH THE CITY OF OREGON OCCUPANCY CODE.
17. ALL WORK SHALL BE IN ACCORDANCE WITH THE CITY OF OREGON CONSTRUCTION CODE.
18. ALL WORK SHALL BE IN ACCORDANCE WITH THE CITY OF OREGON PUBLIC WORKS CODE.
19. ALL WORK SHALL BE IN ACCORDANCE WITH THE CITY OF OREGON UTILITIES CODE.
20. ALL WORK SHALL BE IN ACCORDANCE WITH THE CITY OF OREGON WATER CODE.
21. ALL WORK SHALL BE IN ACCORDANCE WITH THE CITY OF OREGON SEWER CODE.
22. ALL WORK SHALL BE IN ACCORDANCE WITH THE CITY OF OREGON GAS CODE.
23. ALL WORK SHALL BE IN ACCORDANCE WITH THE CITY OF OREGON TELEPHONE CODE.
24. ALL WORK SHALL BE IN ACCORDANCE WITH THE CITY OF OREGON CABLE CODE.
25. ALL WORK SHALL BE IN ACCORDANCE WITH THE CITY OF OREGON BROADCASTING CODE.
26. ALL WORK SHALL BE IN ACCORDANCE WITH THE CITY OF OREGON TELEVISION CODE.
27. ALL WORK SHALL BE IN ACCORDANCE WITH THE CITY OF OREGON RADIO CODE.
28. ALL WORK SHALL BE IN ACCORDANCE WITH THE CITY OF OREGON POWER CODE.
29. ALL WORK SHALL BE IN ACCORDANCE WITH THE CITY OF OREGON NUCLEAR CODE.
30. ALL WORK SHALL BE IN ACCORDANCE WITH THE CITY OF OREGON SPACE CODE.
31. ALL WORK SHALL BE IN ACCORDANCE WITH THE CITY OF OREGON AERIAL CODE.
32. ALL WORK SHALL BE IN ACCORDANCE WITH THE CITY OF OREGON MARINE CODE.
33. ALL WORK SHALL BE IN ACCORDANCE WITH THE CITY OF OREGON AVIATION CODE.
34. ALL WORK SHALL BE IN ACCORDANCE WITH THE CITY OF OREGON RAILROAD CODE.
35. ALL WORK SHALL BE IN ACCORDANCE WITH THE CITY OF OREGON HIGHWAY CODE.
36. ALL WORK SHALL BE IN ACCORDANCE WITH THE CITY OF OREGON WATERWAY CODE.
37. ALL WORK SHALL BE IN ACCORDANCE WITH THE CITY OF OREGON COASTAL CODE.
38. ALL WORK SHALL BE IN ACCORDANCE WITH THE CITY OF OREGON FISH AND WILDLIFE CODE.
39. ALL WORK SHALL BE IN ACCORDANCE WITH THE CITY OF OREGON HISTORIC CODE.
40. ALL WORK SHALL BE IN ACCORDANCE WITH THE CITY OF OREGON CULTURAL CODE.
41. ALL WORK SHALL BE IN ACCORDANCE WITH THE CITY OF OREGON RECREATION CODE.
42. ALL WORK SHALL BE IN ACCORDANCE WITH THE CITY OF OREGON PARKS AND RECREATION CODE.
43. ALL WORK SHALL BE IN ACCORDANCE WITH THE CITY OF OREGON AMUSEMENT CODE.
44. ALL WORK SHALL BE IN ACCORDANCE WITH THE CITY OF OREGON GOLF CODE.
45. ALL WORK SHALL BE IN ACCORDANCE WITH THE CITY OF OREGON HUNTING CODE.
46. ALL WORK SHALL BE IN ACCORDANCE WITH THE CITY OF OREGON FISHING CODE.
47. ALL WORK SHALL BE IN ACCORDANCE WITH THE CITY OF OREGON BOATING CODE.
48. ALL WORK SHALL BE IN ACCORDANCE WITH THE CITY OF OREGON CAMPGROUND CODE.
49. ALL WORK SHALL BE IN ACCORDANCE WITH THE CITY OF OREGON BEACH CODE.
50. ALL WORK SHALL BE IN ACCORDANCE WITH THE CITY OF OREGON STATE CODE.

BACKGROUND

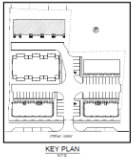
FABIANI ARCHITECT LTD.

OWNER ASSOCIATION

14032

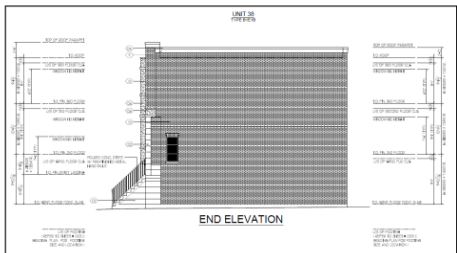
SPA6

BUILDING 3



NOTES
1. REFER TO THE ARCHITECTURAL PLAN FOR THE LOCATION OF THIS BUILDING.
2. REFER TO THE INTERIOR FINISH SCHEDULE FOR THE FINISHES.
3. REFER TO THE MECHANICAL SCHEDULE FOR THE MECHANICAL SYSTEMS.
4. REFER TO THE ELECTRICAL SCHEDULE FOR THE ELECTRICAL SYSTEMS.
5. REFER TO THE PLUMBING SCHEDULE FOR THE PLUMBING SYSTEMS.
6. REFER TO THE ROOFING SCHEDULE FOR THE ROOFING SYSTEMS.
7. REFER TO THE EXTERIOR FINISH SCHEDULE FOR THE EXTERIOR FINISHES.
8. REFER TO THE STRUCTURAL SCHEDULE FOR THE STRUCTURAL SYSTEMS.
9. REFER TO THE GEOTECHNICAL SCHEDULE FOR THE GEOTECHNICAL SYSTEMS.
10. REFER TO THE CIVIL SCHEDULE FOR THE CIVIL SYSTEMS.

- OUTSIDE MATERIAL SCHEDULE**
- 1. BRICK - COMMON BRICK, FACE BRICK, SOLID, 190 x 90 x 60 mm
 - 2. CONCRETE - 25 MPa
 - 3. GLASS - 6 mm clear glass
 - 4. METAL - GALVANNEAL STEEL, 0.8 mm
 - 5. ASPHALT - 100 mm AC
 - 6. POLYSTYRENE - 100 mm EPS
 - 7. GYPSUM BOARD - 12.5 mm, 15 mm
 - 8. FIBRECEMENT BOARD - 12.5 mm, 15 mm
 - 9. MORTAR - 1:3
 - 10. PAINT - EXTERIOR GRADE, INTERIOR GRADE
 - 11. ROOFING - ASPHALT/FLY ASH, BURNT SLATE
 - 12. EXTERIOR FINISH - STUCCO, BRICK SLIP
 - 13. INTERIOR FINISH - PAINT, TILE, CARPET
 - 14. WINDOW FRAME - ALUMINUM, UPVC
 - 15. DOOR FRAME - ALUMINUM, UPVC
 - 16. FLOOR FINISH - CERAMIC TILE, POLISHED CONCRETE
 - 17. CEILING FINISH - POP, PLASTER
 - 18. WALL FINISH - PLASTER, PAINT
 - 19. ROOF FINISH - ASPHALT/FLY ASH
 - 20. CONCRETE CURB - 150 mm
 - 21. CONCRETE CURB - 200 mm
 - 22. CONCRETE CURB - 300 mm
 - 23. CONCRETE CURB - 400 mm
 - 24. CONCRETE CURB - 500 mm
 - 25. CONCRETE CURB - 600 mm
 - 26. CONCRETE CURB - 700 mm
 - 27. CONCRETE CURB - 800 mm
 - 28. CONCRETE CURB - 900 mm
 - 29. CONCRETE CURB - 1000 mm
 - 30. CONCRETE CURB - 1200 mm
 - 31. CONCRETE CURB - 1500 mm
 - 32. CONCRETE CURB - 1800 mm
 - 33. CONCRETE CURB - 2000 mm



NO.	DESCRIPTION	DATE

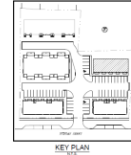
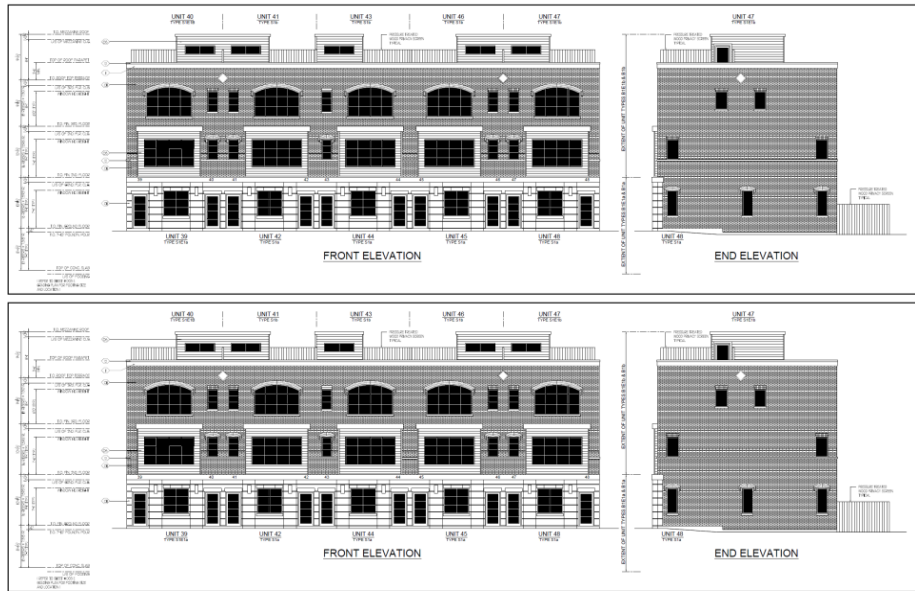
FABIANI ARCHITECT LTD.
REGISTERED ARCHITECT
REGISTERED ENGINEER
REGISTERED CIVIL ENGINEER
REGISTERED ELECTRICAL ENGINEER
REGISTERED MECHANICAL ENGINEER
REGISTERED PLUMBING ENGINEER
REGISTERED ROOFING ENGINEER
REGISTERED STRUCTURAL ENGINEER
REGISTERED CIVIL ENGINEER

DUNAS STREET CONDOMINIUM TOWNHOMES
PHASE 2 UNIT 212
BUILDING 4 ELEVATIONS AND ROOF PLAN

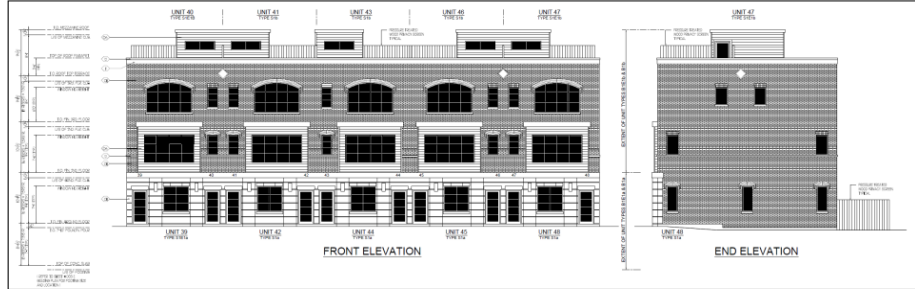
PROJECT NO.	14032
DATE	
SCALE	
BY	
CHECKED BY	
DATE	

14032
SPA8

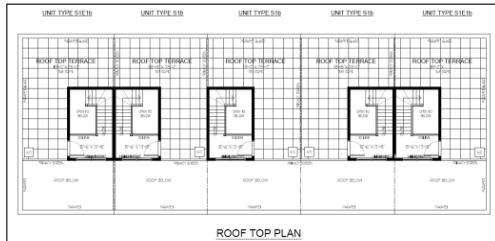
BUILDING 4



DATE: 12/10/14
 DRAWN BY: J. J. JONES
 CHECKED BY: M. J. JONES
 PROJECT NO.: 14032
 SHEET NO.: SPA10
 BUILDING 5 ELEVATIONS AND ROOF PLAN



- OTHER MARKING SCHEDULE**
- 1. 10% SCALE
 - 2. 20% SCALE
 - 3. 30% SCALE
 - 4. 40% SCALE
 - 5. 50% SCALE
 - 6. 60% SCALE
 - 7. 70% SCALE
 - 8. 80% SCALE
 - 9. 90% SCALE
 - 10. 100% SCALE
 - 11. 110% SCALE
 - 12. 120% SCALE
 - 13. 130% SCALE
 - 14. 140% SCALE
 - 15. 150% SCALE
 - 16. 160% SCALE
 - 17. 170% SCALE
 - 18. 180% SCALE
 - 19. 190% SCALE
 - 20. 200% SCALE



BUILDING 5

FABIANI ARCHITECT LTD	
DANAS STREET CONDOMINIUM TOWNHOMES BUILDING 5 ELEVATIONS AND ROOF PLAN	
DATE: 12/10/14	DRAWN BY: J. J. JONES
CHECKED BY: M. J. JONES	PROJECT NO.: 14032
SHEET NO.: SPA10	