

## Hamilton's Vital Signs 2015

### Hamilton's Economic Renaissance: A prosperity unevenly shared

July 6 2016

Deputation to Emergency and Community Services



**Hamilton Roundtable**  
for Poverty Reduction

**MAKING HAMILTON**  
the best place  
to raise a child.

## Outline

- 1 Vital Signs is a Hamilton Community Foundation publication. In 2015, HCF commissioned the SPRC to examine Hamilton's economy more closely.

- 2 Highlights today:

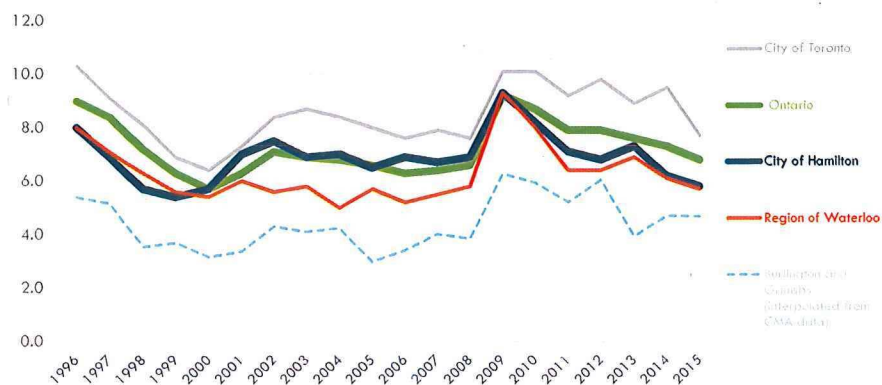
- Sara Mayo (SPRC)
  - Unemployment rate, Employment and Youth, Housing
- Tom Cooper (Hamilton Roundtable for Poverty Reduction)
  - Social Assistance, Precarious Employment and Living Wage

- 3 Full report available at:

[http://www.sprc.hamilton.on.ca/wp-content/uploads/2015/10/VS-2015-FINAL\\_Jan.2016.pdf](http://www.sprc.hamilton.on.ca/wp-content/uploads/2015/10/VS-2015-FINAL_Jan.2016.pdf)

## City's unemployment rate is improving

Unemployment rate, City of Hamilton and selected communities, 1987-2015



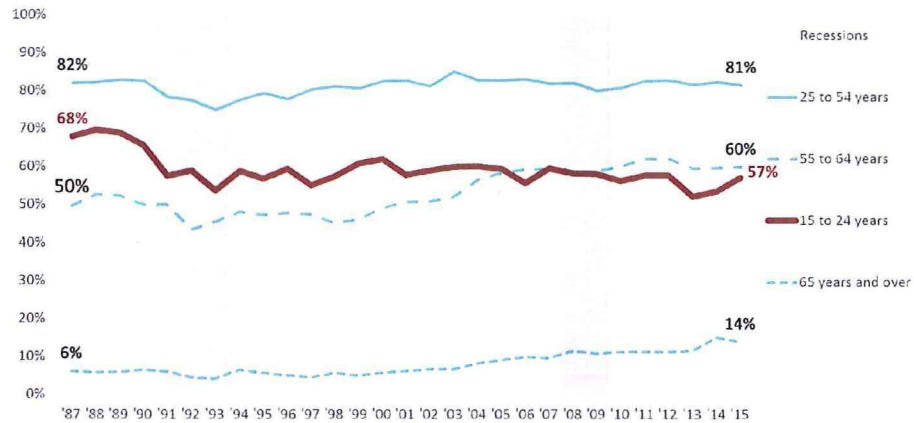
## Employment and youth

Part-time employment for teens “is linked to later life outcomes such as higher income, better fitting jobs and better career networks”.

- Statistics Canada

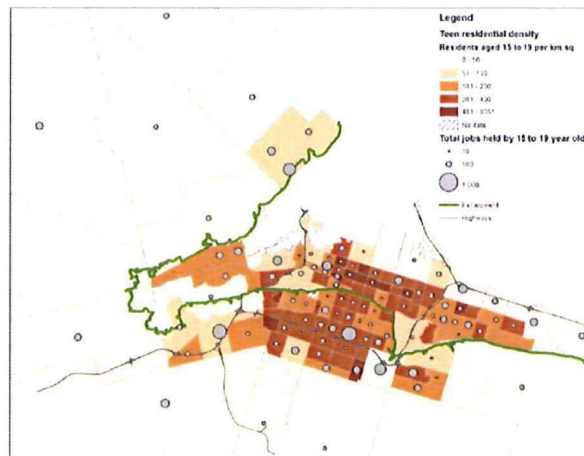
## Employment rates are better measure of labour market health

Employment rates by age group, Hamilton CMA, 1987-2015



Teens in lower city, many living in lowest income neighbourhoods, are far from main locations of teen jobs

**Map 1. Residential density of teenagers (15 to 19) compared to number of jobs held by teens, by census tracts, City of Hamilton, 2011**



Data source: Statistics Canada (Census and National Household Survey, 2011)

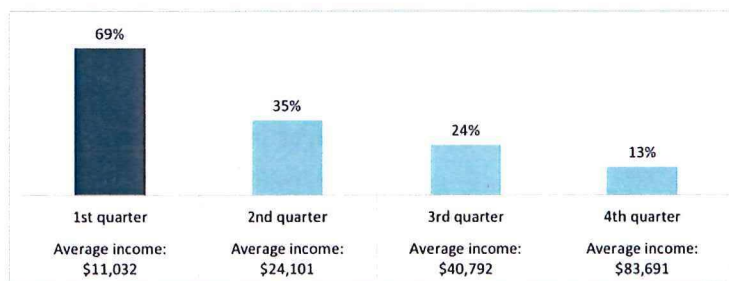
## Housing

"Housing is a basic need not a luxury"

- Hamilton community developer

Lowest income tenants pay the highest proportion of their household income on rent

**Chart 13. Proportion of renters' income spent on rent and utilities, by income quarters, City of Hamilton, 2011**



Data source: Statistics Canada (National Household Survey, 2011), published by the BC Non-Profit Housing Association and available at [rentalhousingindex.ca](http://rentalhousingindex.ca)

## Largest rent increases are in smallest, lowest priced units.

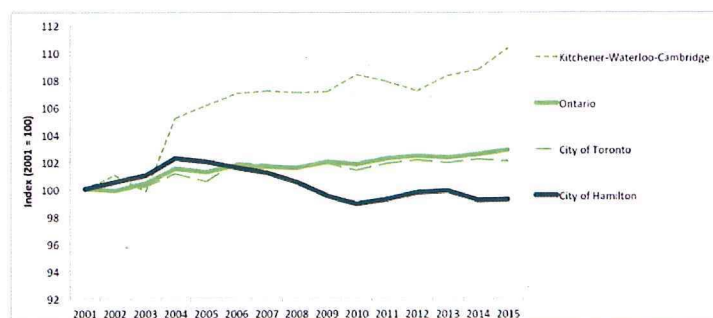
Chart 17. Change in average monthly rent by number of bedrooms, primary rental market, City of Hamilton, 2007-2015



Data source: Canadian Housing and Mortgage Corporation (Housing Market Information Portal – CMHC Rental Market Survey)

## Hamilton has lost about 1,000 primary market rental units since 2004, in large part due to condo-conversions

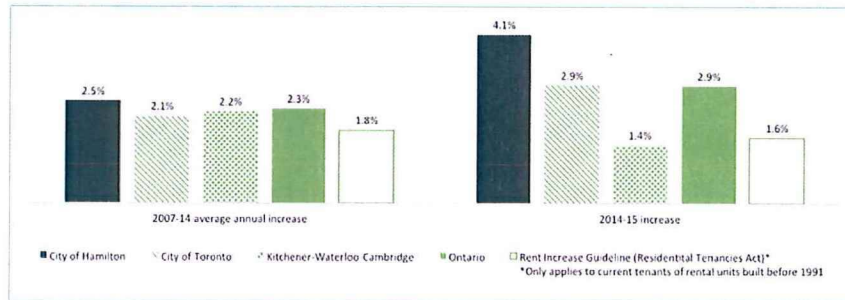
Chart 14. Change in number of rental units in the primary rental market (Indexed, 2001 = 100), City of Hamilton and selected communities, 2001-2015



Data source: Canadian Housing and Mortgage Corporation (Housing Market Information Portal – CMHC Rental Market Survey, 2001-2015)

## Rent increases in Hamilton are higher than other communities

**Chart 16. Change in average rent for units in the primary rental market, City of Hamilton and selected communities, 2007-2015**



Data source: Canadian Housing and Mortgage Corporation (Housing Market Information Portal – CMHC Rental Market Survey, 2007-2014)

## Social Assistance

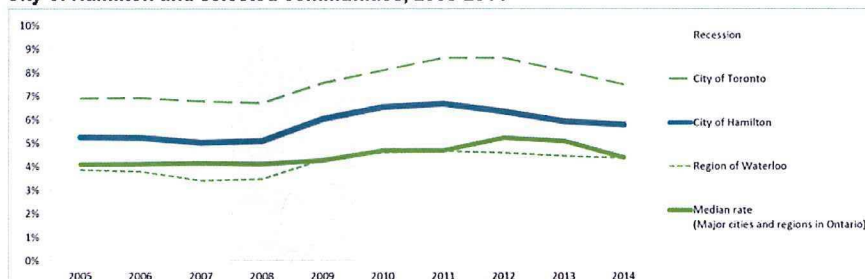
“I get it you guys don’t want people to get too comfortable living on OW. But sometimes it comes down to clean clothes or not. Therefore making job searching impossible.”

- 2010 Hamilton OW Client Survey



## Social assistance caseloads still higher than before recession

**Chart 8. Percentage of households receiving Ontario Works, City of Hamilton and selected communities, 2005-2014**



Data source: Ontario Municipal Benchmarking Institute. (Performance Measurement Reports 2006, 2009, 2012 and 2014).

## Deep poverty experienced by people living on social assistance is a major barrier to transitioning back to employment.

**Chart 7. Monthly social assistance rates for a single person on Ontario Works compared to food and housing in Hamilton's and the poverty line, 2014**



Data source: Statistics Canada (*Low Income Lines, 2013-2014*), Canada Housing and Mortgage Corporation (*Rental Market Report, 2015*), City of Hamilton (*How much does healthy eating cost in 2014?*), Income Security Advocacy Centre (*Current Social Assistance Rates, 2014*).

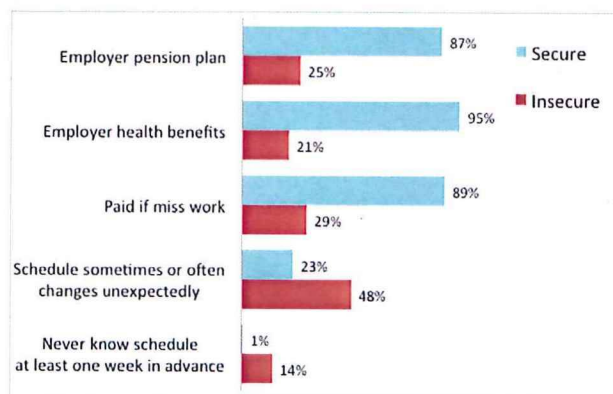
## Precarious Employment

“But where the anxiety comes in, am I going to have this job in two weeks? Am I going to be able to pay my bills?”

- Worker interviewed in PEPSO research project

## Impact of precarious employment on family life

**Chart 27. Employer benefits and scheduling instability, workers aged 25-65, by employment security categories, city of Hamilton, 2011 and 2014 (combined)**



Data source: McMaster University and United Way Toronto, Poverty and Employment Precarity in Southern Ontario (PEPSO) data file, (2011 and 2014).



## Policy Solutions

"We cannot turn back the clock, but we can decide in what ways we can shape the labour market to better serve our economic and social goals."

- Tom Zizys in *Working Better: Creating a high performance labour market*

## Vital Signs policy solutions drawn from Canadian think tanks

- ❑ Increased access to experiences and opportunities, especially for children and younger adults that help provide latter into the middle-class
- ❑ Modernization of Canada's social safety net and employment support programs, including childcare and affordable housing, to reflect a changing labour market
- ❑ Improving employment conditions and access to labour market information
  - ❑ including through living wage jobs
  - ❑ In September, City of Hamilton will be invited to become living wage champion

## Living Wage

- More than 30 local organizations have stepped up and committed to paying staff a living wage

