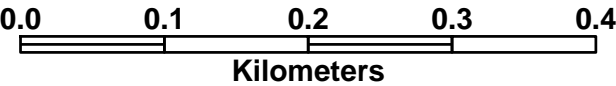


Stoney Creek Regional Facility  
1996 Original Footprint

- Legend**

  - Landfill Footprint: 1996
  - Landfill Footprint: 160m Holding Zone
  - Subject Site
  - Property
  - Top Of Slope
  - Urban Boundary
- Draft Approved Plans: Post-2013
  - Draft Approved Plans: 1996-2013
  - Draft Approved Plans: Pre-1996
  - Registered Plans: Post 2013
  - Registered Plans: 1996-2013
  - Registered Plans: Pre-1996



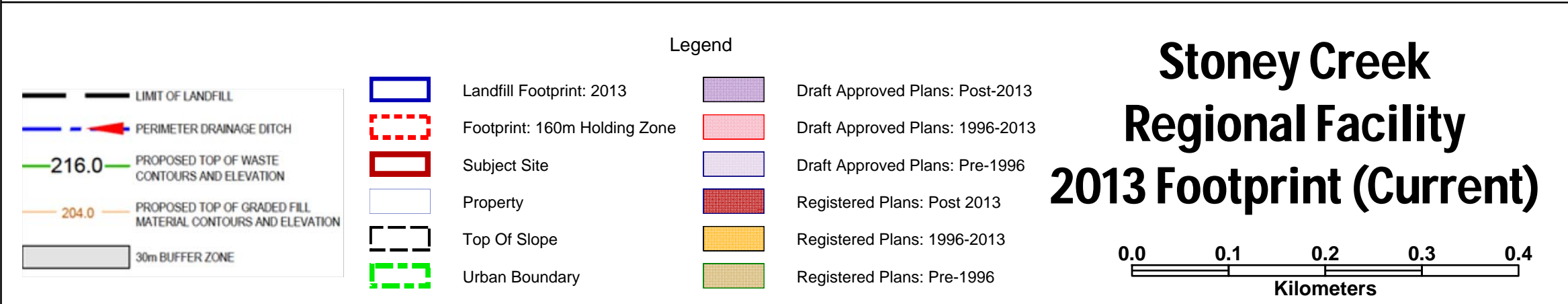
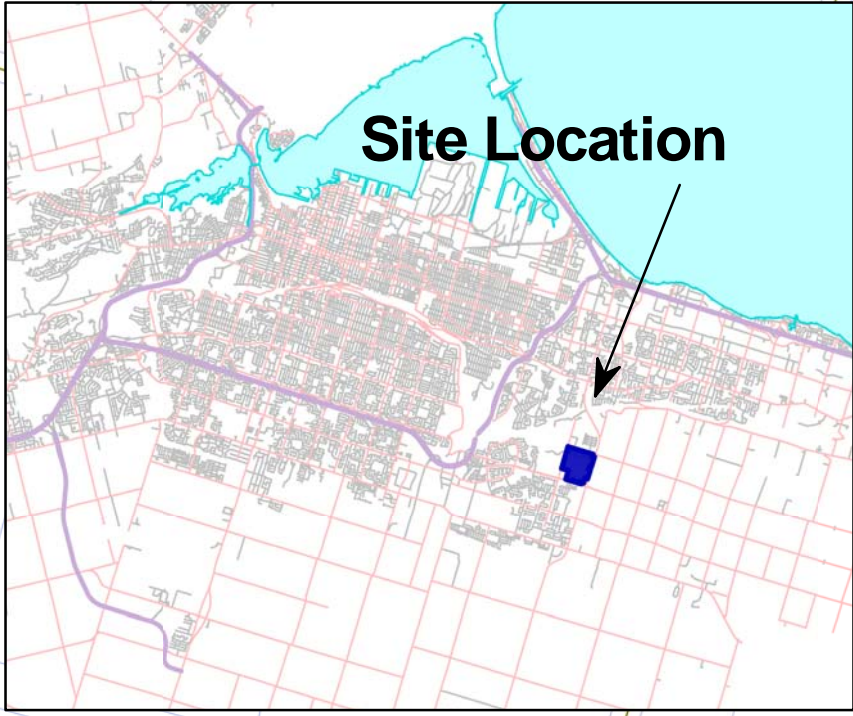
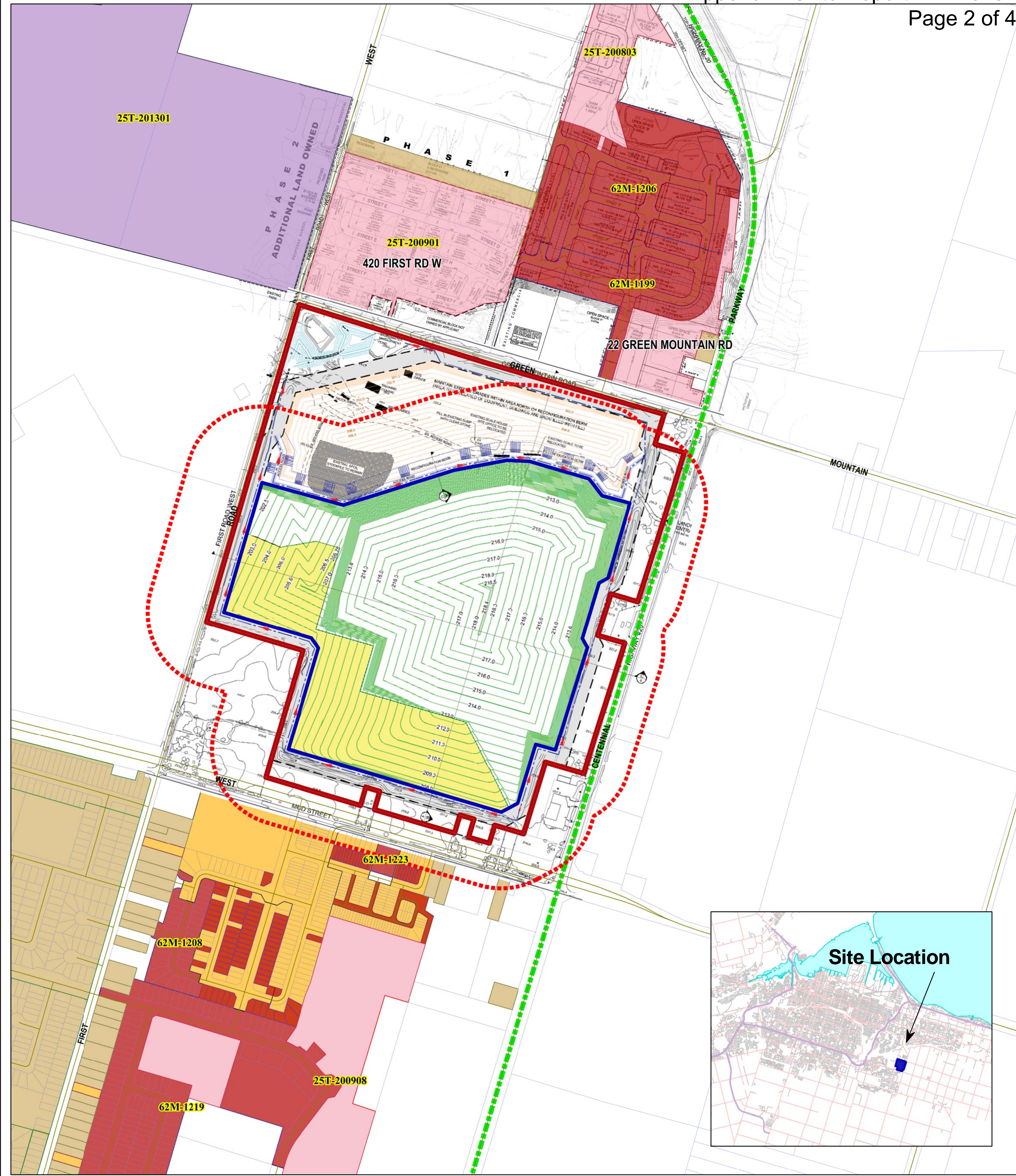
Stoney Creek Regional Facility

Date Plotted:  
August 4, 2016

PLANNING AND ECONOMIC DEVELOPMENT DEPARTMENT  
GIS - PLANNING & ANALYSIS

Although the information displayed in this map has been captured as accurately as possible, some errors may be present due to insufficient or outdated information.  
For further information, please contact the GIS - Planning and Analysis Section at 905-546-2424 or by email: GIS-Planning@analysis@hamilton.ca  
© Teranet Land Information Services Inc. and its licensors. [2008] May Not be Reproduced without Permission. THIS IS NOT A PLAN OF SURVEY



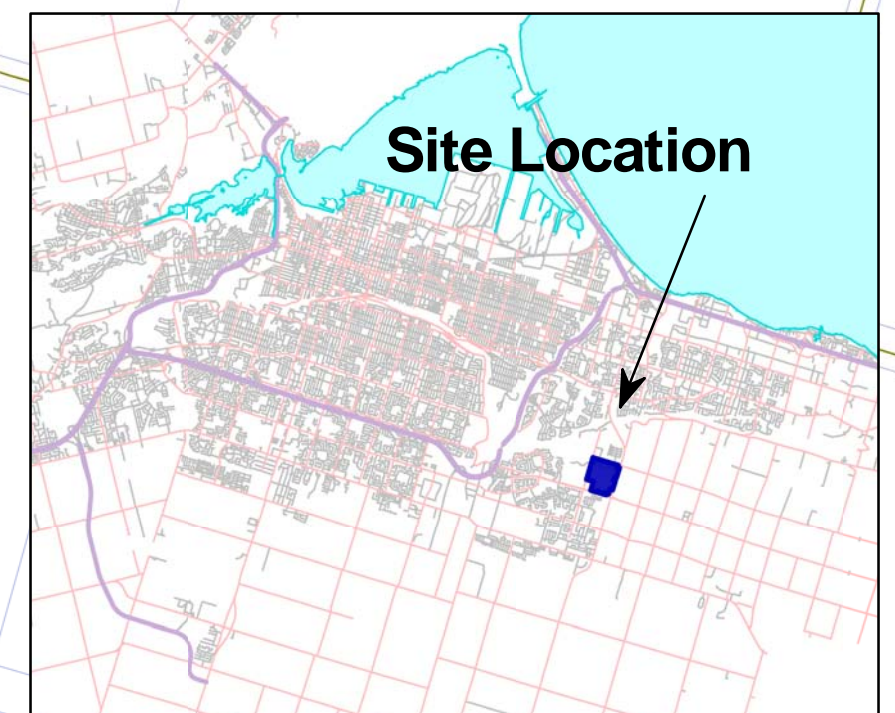
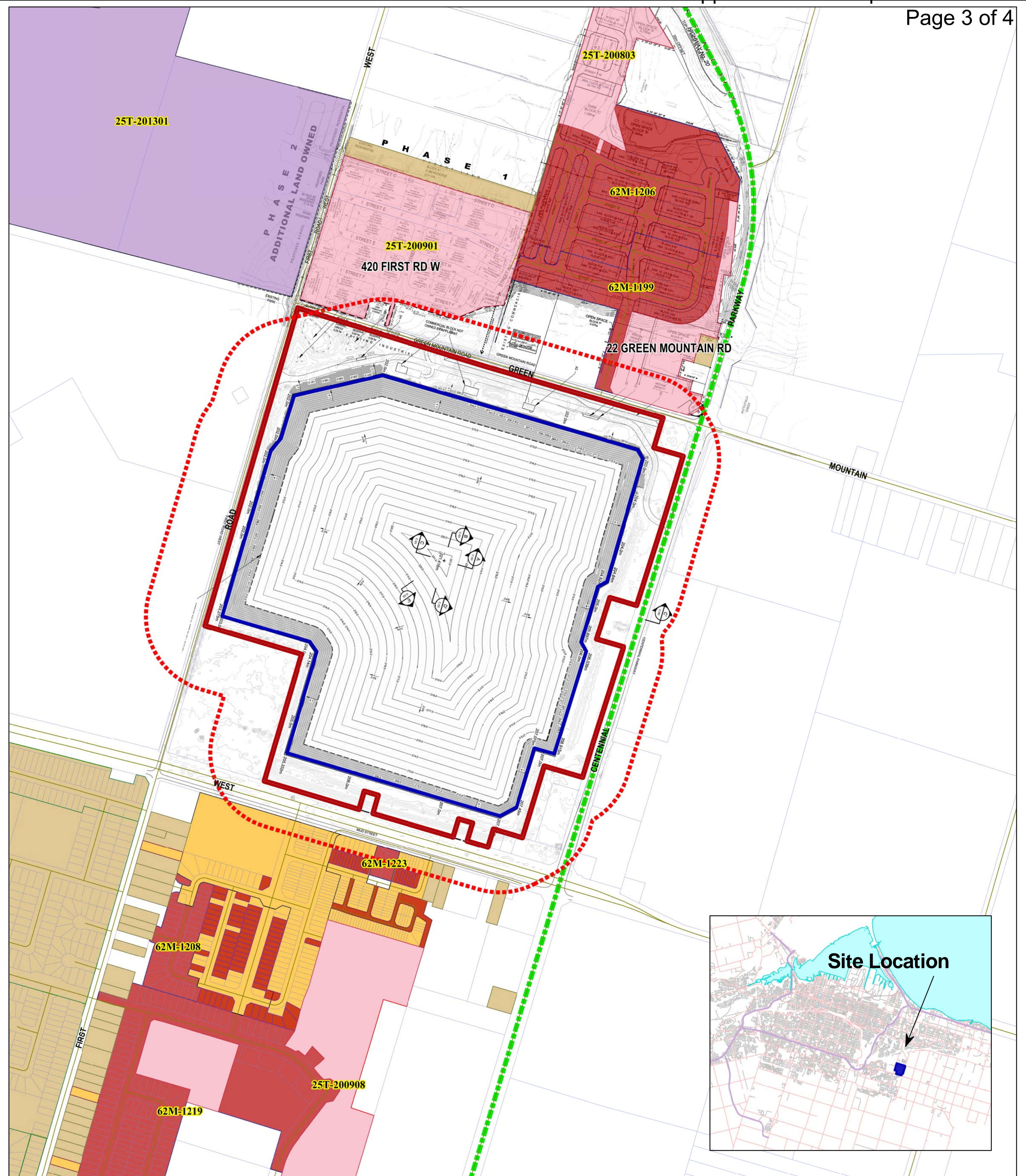


**Stoney Creek Regional Facility**

Date Plotted: August 4, 2016		
PLANNING AND ECONOMIC DEVELOPMENT DEPARTMENT GIS - PLANNING & ANALYSIS		

Although the information displayed in this map has been captured as accurately as possible, some errors may be present due to insufficient or outdated information.  
For further information, please contact the GIS - Planning and Analysis Section at 905-546-2424 or by email: GIS-PlanningAnalysis@hamilton.ca  
© Terrestrial Land Information Services Inc. and its licensors. (2008) May Not be Reproduced without Permission. THIS IS NOT A PLAN OF SURVEY

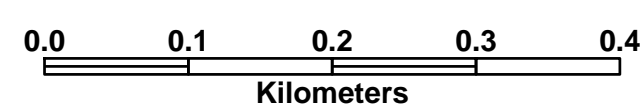




## Legend

	Landfill Footprint: Alternative 1		Draft Approved Plans: Post-2013
	Landfill Footprint: 160m Holding Zone		Draft Approved Plans: 1996-2013
	Subject Site		Draft Approved Plans: Pre-1996
	Property		Registered Plans: Post 2013
	Top Of Slope		Registered Plans: 1996-2013
	Urban Boundary		Registered Plans: Pre-1996

## Draft Proposed TOR Environmental Assessment Alternative Footprint 1



## Stoney Creek Regional Facility

Date Plotted:  
August 4, 2016



PLANNING AND ECONOMIC DEVELOPMENT DEPARTMENT  
GIS - PLANNING & ANALYSIS

Although the information displayed in this map has been captured as accurately as possible, some errors may be present due to insufficient or outdated information.  
For further information, please contact the GIS - Planning and Analysis Section at 905-546-2424 or by email: GIS-PlanningAnalysis@hamilton.ca  
© Teranet Land Information Services Inc. and its licensors. [2008] May Not be Reproduced without Permission. THIS IS NOT A PLAN OF SURVEY



