

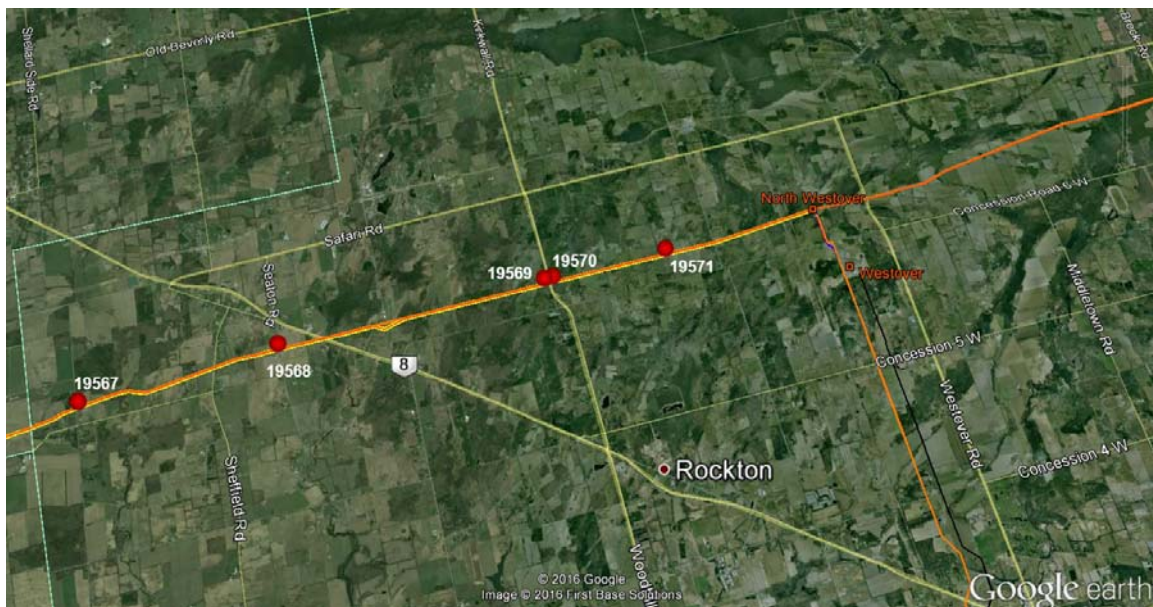
Fred Eisenberger
 Mayor
 City of Hamilton

Mayor Eisenberger:

We wish to provide you notification that Enbridge Pipelines Inc. will be undertaking five pipeline integrity excavations at locations on Enbridge’s Line 7 oil pipeline within the greater Hamilton area. The locations are shown in the table below.

eDig ID	Line	Milepost	Girthweld	Latitude	Longitude	Legal Land Description
19567	7	1855.597	154680	43.31202	-80.2318	PT LT 1 & 2, CON 6 BEVERLY; FLAMBOROUGH CITY OF HAMILTON
19568	7	1857.441	157170	43.31904	-80.1969	PT LT 8 CON 6 BEVERLY; CITY OF HAMILTON
19569	7	1859.934	160570	43.32709	-80.1484	PT LTS 17 & 18 CON 6 BEVERLY; FLAMBOROUGH/CITY OF HAMILTON
19570	7	1860.013	160680	43.32733	-80.1468	PT LT 19 CON 6 BEVERLY; FLAMBOROUGH CITY OF HAMILTON
19571	7	1861.118	162160	43.33085	-80.1256	PT LTS 23 & 24 CON 6 BEVERLY; FLAMBOROUGH/ CITY OF HAMILTON

The RED dots on the map below shows the locations where the work will occur.



The work is scheduled to commence in the next few weeks and our intent is to be off location before December 15, 2016 (or sooner). All required federal, provincial and municipal permits have been acquired. Please note that our work schedule may be impacted by weather and other logistical considerations.

Enbridge's regular monitoring and inspection program alerts the company to pipeline features that may require attention in our proactive and preventative maintenance program to ensure the ongoing quality, safety and integrity of the pipeline. Enbridge invests heavily in pipeline safety through its pipeline integrity program – which encompasses the tools, technologies and strategies needed to ensure that pipelines and facilities are inspected and assessed for safety and reliability.

As part of this integrity management program, Enbridge uses state of the art in-line inspection (“ILI”) tools to collect data and evaluate the condition of its pipelines. The data from the ILI tools is used as part of a proactive maintenance program to identify and assess locations on the pipeline that may require additional visual inspections to determine if maintenance or repair is required. These visual or direct pipeline inspections are referred to as “integrity digs”. For further information please visit: <http://www.enbridge.com/InYourCommunity/PipelinesInYourCommunity/Preventativepipelinemaintenance.aspx>

In early 2016, Enbridge conducted ILI tool runs through the Line 7 pipeline to obtain thorough and current data on the condition of the pipeline. The technologies used identify specific features such as corrosion, cracks, dents or pipe deformation. Using the data from the tool runs, expert analysis identified the feature on the pipeline surface that required further field investigation and sets a schedule for this work to be completed. Enbridge will now safely excavate the pipeline at these five locations and conduct a thorough examination of the pipe and complete any maintenance or repairs deemed necessary.

Enbridge will continue to monitor the condition of our pipeline assets with future ILI inspections and subsequent related integrity dig programs. We will provide you with notification if additional digs are identified for your area.

It is important to note that this work is a routine, preventative measure for the future safe operation of the line and that there is no immediate threat to the integrity or safe operation of the line.

Should you have any further questions, please do not hesitate to contact Ken Hall, Senior Advisor Public Affairs ken.hall@enbridge.com

Sincerely,



Ken Hall
Senior Advisor, Public Affairs
Eastern Region Operations
Enbridge Pipelines Inc.

Cc: Chris Murray, CAO
Guy Paparella, Director of Planning
David Cunliffe, Fire Chief