

# Hamilton Ward Boundary Review

---

**Presentation of Findings and  
Recommendation to the  
City of Hamilton  
General Issues Committee**

February 1, 2017

# Study Overview

---

- p The City of Hamilton retained an independent Consultant Team led by Watson & Associates, in association with Dr. Robert J. Williams, Trust Learning Solutions and ICA Associates, to undertake a comprehensive Ward Boundary Review (W.B.R.).
- p This W.B.R. represents the first opportunity that the municipal representation needs of all residents of the amalgamated City are being considered collectively.

# Study Overview (Cont'd)

---

## Study Objectives

- p The 2015-2016 Hamilton W.B.R. is premised on the legitimate democratic expectation that municipal representation in Hamilton will be:
  - n effective;
  - n equitable; and
  - n an accurate reflection of the contemporary distribution of communities and people across the City.

# Study Process

---

October 2015



## Phase 1

Review data  
Develop public engagement strategy  
Gather information on the present ward system

## Phase 2

Hold public information and engagement sessions concentrating on the existing ward structure and guiding principles (Round 1 Consultation)

## Phase 3

Prepare Interim Report  
Public consultations on preliminary options (Round 2 Consultation)

February 2017

## Phase 4

We are here



Prepare Final Report including final options  
Present findings and recommendations to General Issues Committee

# Study Process (Cont'd)

---

- p A Final Report, dated October 11, 2016, was referred to the General Issues Committee (G.I.C.) of Hamilton City Council for consideration on October 27, 2016.
- p The report presented two ward boundary options for Council's consideration:
  - n a 15-ward Option; and
  - n a 16-ward Option.

# Study Process (Cont'd)

---

- p At the conclusion of the G.I.C. meeting, members of Hamilton City Council requested:
  - n an opportunity to forward to the Consultant Team “any further suggestions that the Council members may have for alternative ward boundary model options”; and
  - n that the consultants report back to a future meeting of the G.I.C. in the form of a consolidated report that includes “any additional ward boundary model options that may be provided by members of Council” as well as the two options included in the City of Hamilton Ward Boundary Review Final Report.

# Study Process (Cont'd)

---

- p A number of Councillors provided suggestions to the consultants through the City Clerk's Office.
- p All but one of these submissions suggested adjustments to the existing 15-ward configuration – one exception asked to consider a modification to a ward boundary in the proposed 15-ward Option presented in the October Final Report.
- p Close to 100 residents of Ward 6 contacted the Clerk's Office to object to a specific provision of the proposed 15-ward Option as it affected the East Mountain area.
- p No suggestions were submitted in relation to the proposed 16-ward Option.

# Study Process (Cont'd)

---

- p To comply with Council's request, the Consultant Team has prepared an amended Final Report, dated January 16, 2017.
- p The report presents three alternative Options for Members of Council to consider:
  - n the existing 15-ward system modified in light of submissions made by Councillors (Option 1);
  - n the 15-ward Option included in the Final Report as modified in light of concerns and suggestions directed to the Consultant Team (Option 2); and
  - n the 16-ward Option included in the October 11, 2016 Final Report (Option 3).



# Guiding Principles

---

- p Hamilton's W.B.R. is framed by six principles adopted by Council (Clerk's Report CM15004, March 30, 2015):
  - a. Representation by population;
  - b. Population and electoral trends;
  - c. Means of communication and accessibility;
  - d. Geographical and topographical features;
  - e. Community or diversity of interests; and
  - f. Effective representation.

# A Changing City and Considerations for Ward Boundary Design

---

- p Since 2001, Hamilton's population has increased by 9%; do the ward boundaries reflect the changing nature of the City?
- p The population is expected to increase by 12% (68,000 people) over the next decade especially in the present Wards 11, 9 and 15; will the ward boundaries continue to reflect the changing nature of the City?

# A Changing City and Considerations for Ward Boundary Design (Cont'd)

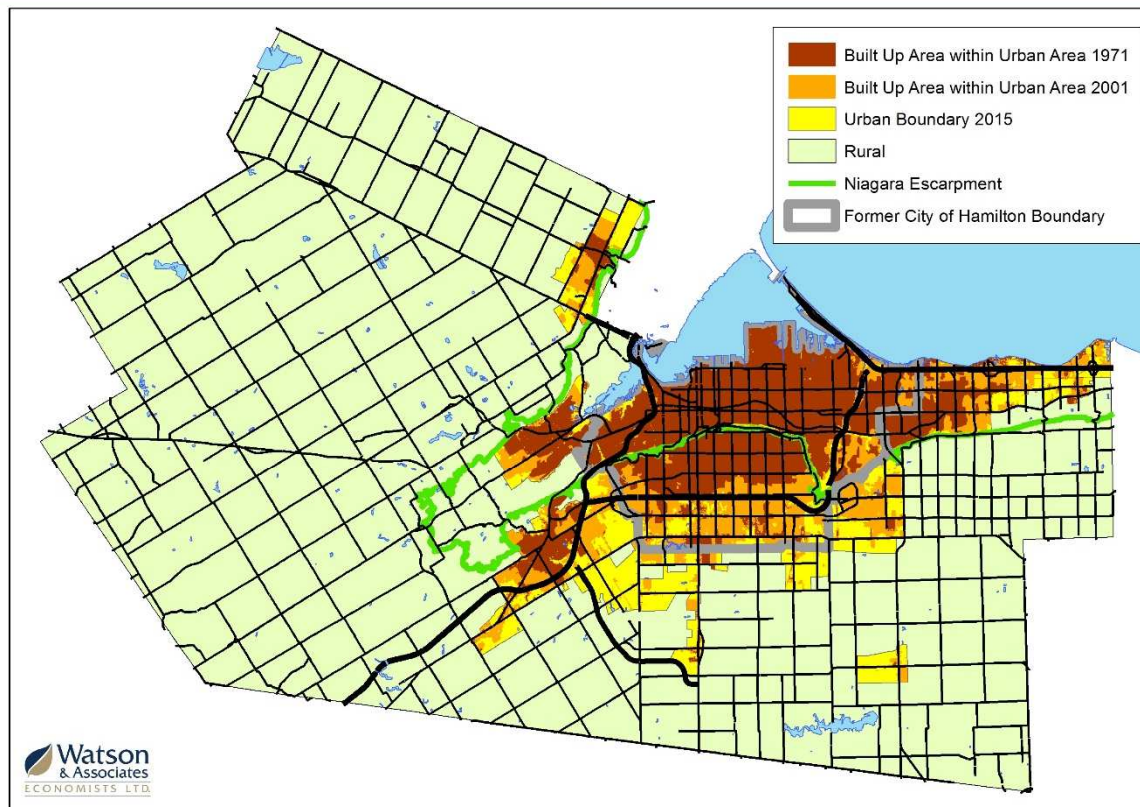
---

- p Population Growth Trends and Shifts:
  - n former City of Hamilton vs. suburban population balance – population continues to shift towards suburban communities;
  - n urban vs. rural population growth trends – Hamilton's population increasingly urban; and
  - n west vs. east population balance – population and growth concentrated in the east side of the City.

# A Changing City and Considerations for Ward Boundary Design (Cont'd)

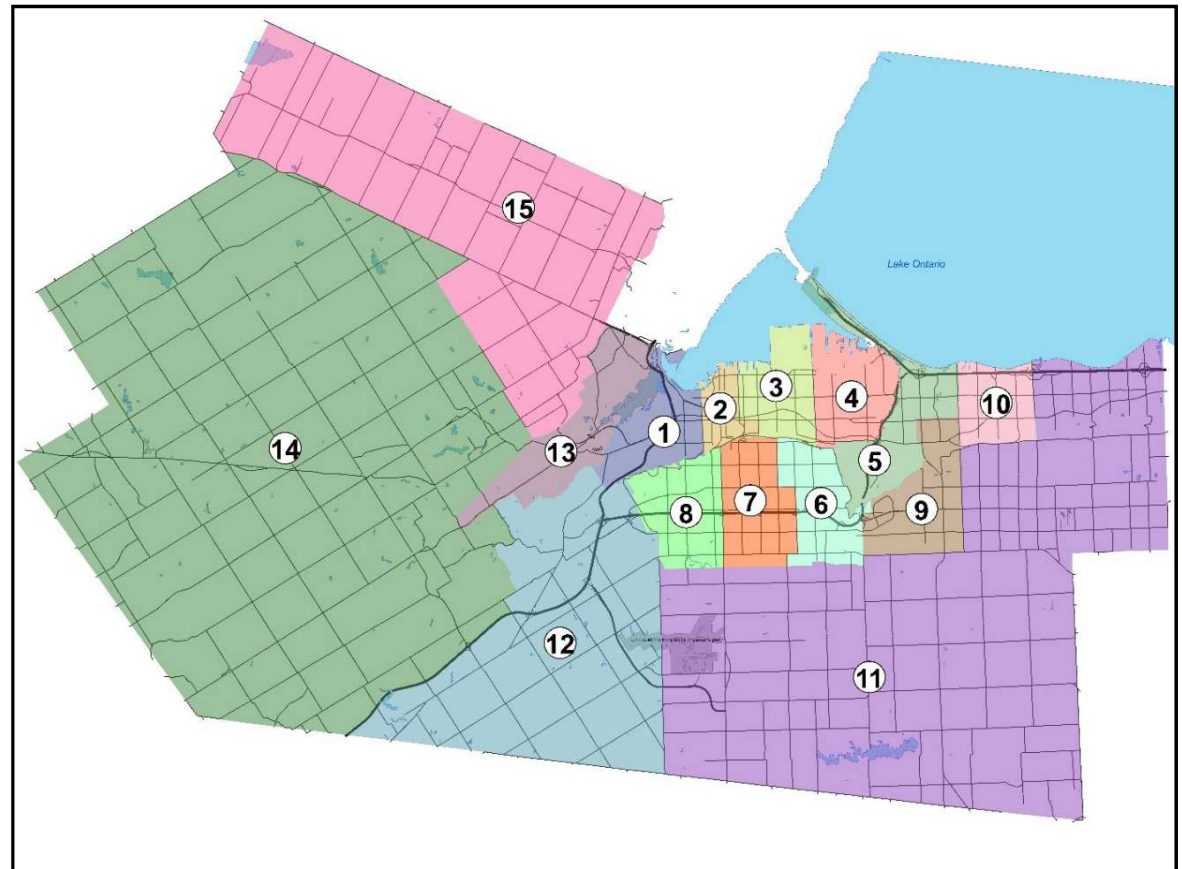
- Urban population clusters in Hamilton today are largely inter-connected.

City of Hamilton Urban Growth, 1971 to Present



# Present Ward Structure

- p Provincial Regulation 448/00 following amalgamation established a system of 15 wards:
  - n 8 wards in the old City of Hamilton; and
  - n 7 wards in suburban/rural areas.



# Evaluation of Present System

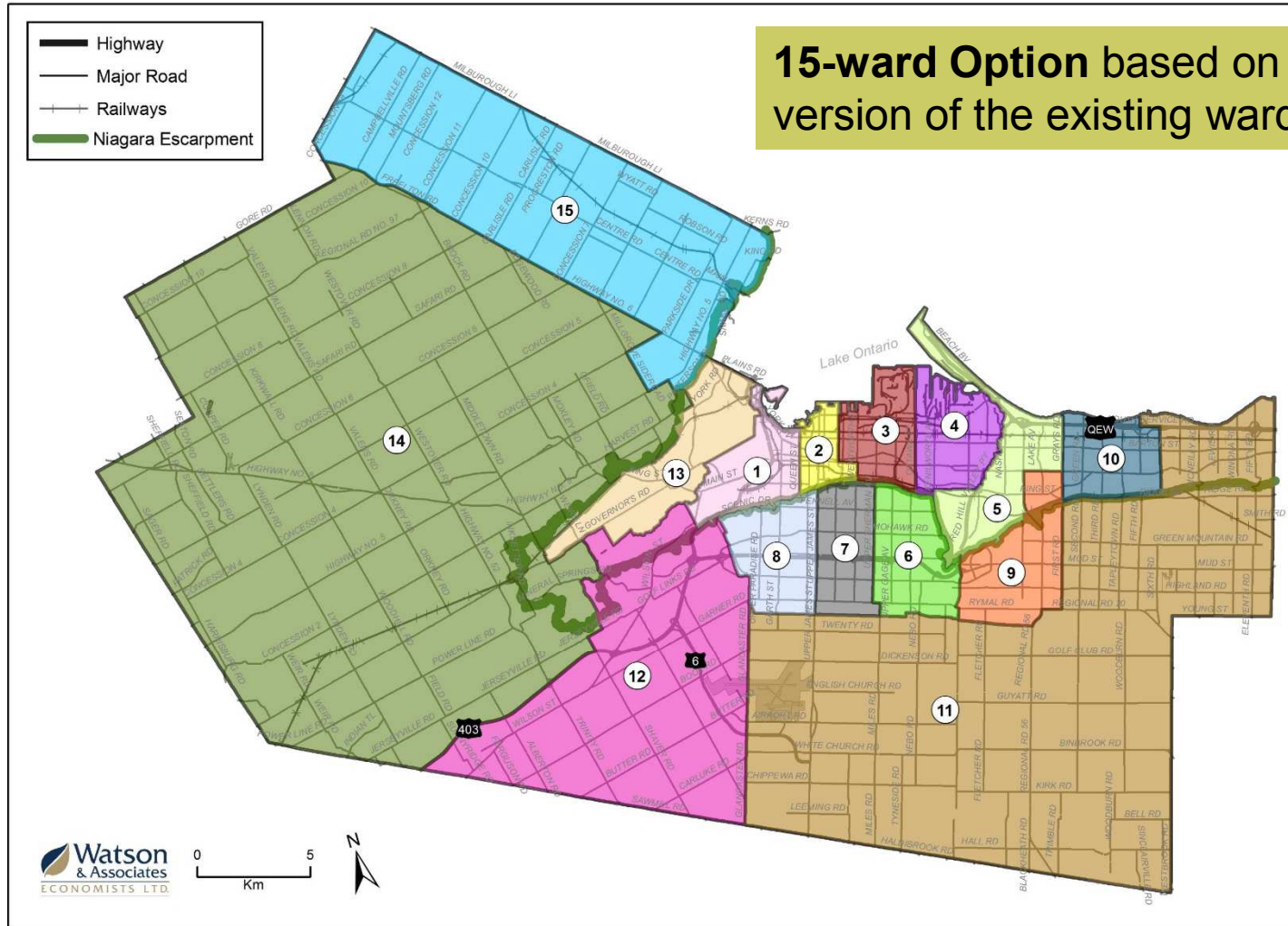
Principle	Does Existing Ward Boundary Structure Meet Requirements of Principle?	Comment
Representation by Population	No	Two above range, three below range
Population and Electoral Trends	No	Three above range, three below range
Means of Communication and Accessibility	Partially successful	Generally clear markers with minor deficiencies; limited access highways divide five wards
Geographical and Topographical Features	Largely successful	Two wards include neighbourhoods above and below Escarpment
Community or Diversity of Interests	Partially successful	Very few communities of interest are divided internally, some groupings questionable (Wards 5 and 11 especially)
Effective Representation	No	Significant dilution of representation (Wards 7 and 8), lack of coherence (Ward 11)

# Final Options

---

- p **Option 1-** a modified version of the existing ward structure based on feedback provided by members of Council after the G.I.C. meeting of October 27, 2016;
- p **Option 2 -** a 15-ward Option that strives to optimize population parity (representation by population). Represents a modified version of the 15-ward Option presented in the October Final Report.
- p **Option 3 -** a 16-ward Option that, through the addition of one ward, achieves a reasonable population balance by ward and preserves communities of interest, while finding better effective representation than a 15-ward Option.

# Ward Boundary Option 1

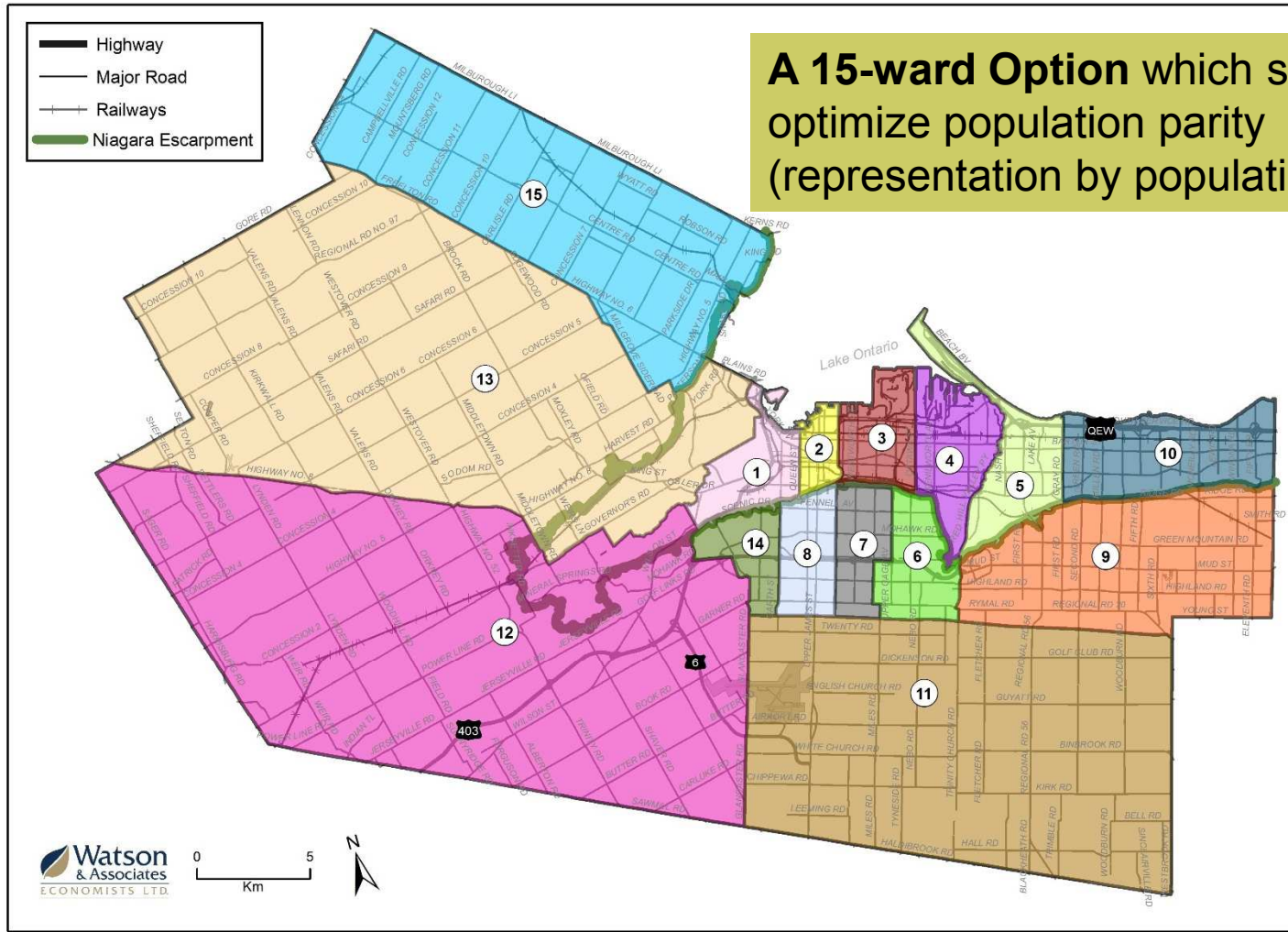




# Ward Boundary Option 1 Evaluation

Principle	Does Proposed Ward Boundary Structure Meet Requirements of Principle?	Comment
Representation by Population	No	Three wards above acceptable range, four below range
Population and Electoral Trends	No	Three wards above acceptable range, three below range
Means of Communication and Accessibility	Partially successful	Improved markers (e.g. Grays Road/Queenston Road); limited access highways divide six wards
Geographical and Topographical Features	Largely successful	Two wards include neighbourhoods above and below Escarpment
Community or Diversity of Interests	Partially successful	Very few communities of interest not divided internally, some groupings questionable (Wards 5 and 11 especially)
Effective Representation	No	Significant dilution of representation (Wards 7 and 8 in 2015, Ward 11 in 2026), lack of coherence (Ward 11)

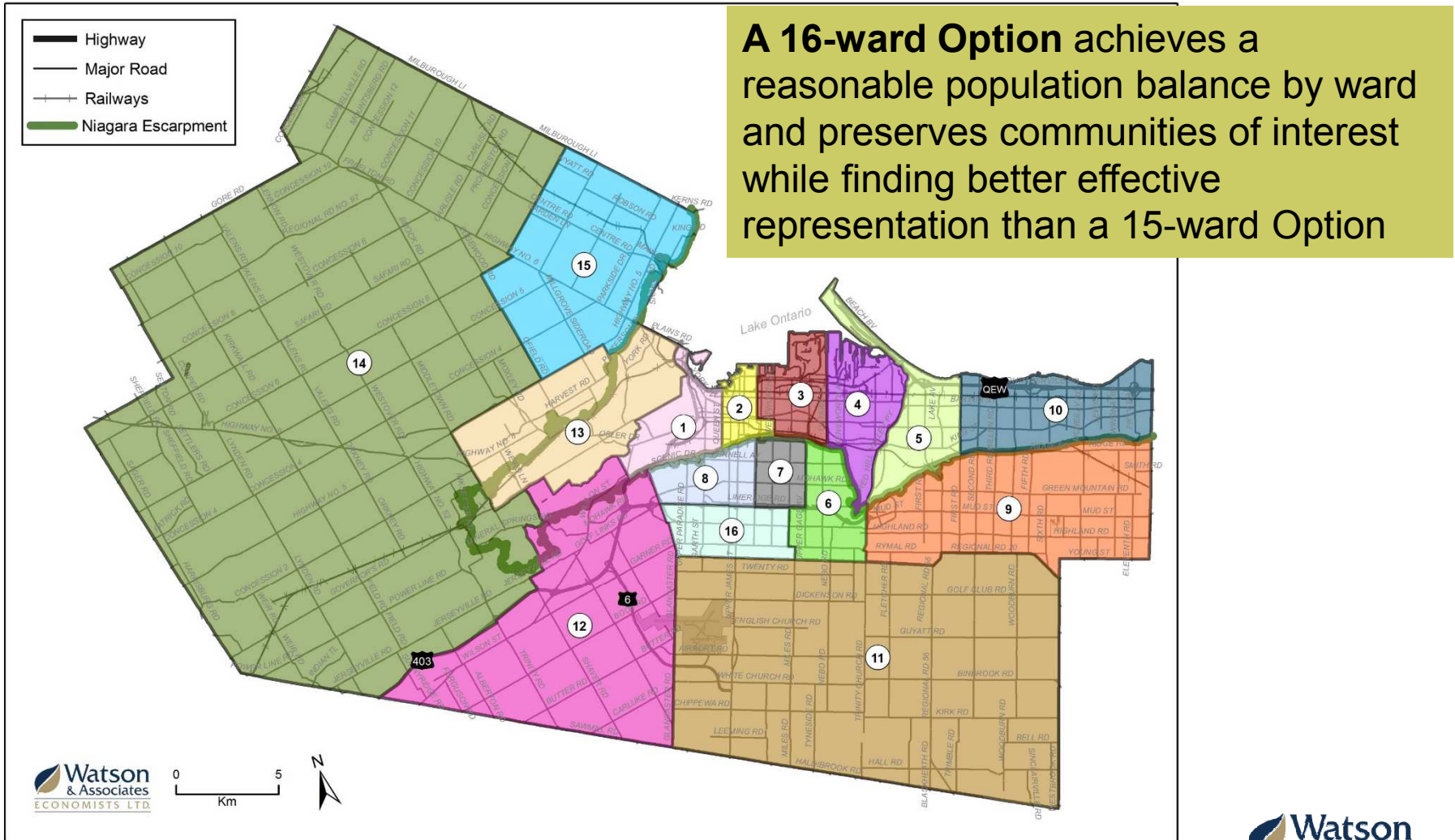
# Ward Boundary Option 2



# Ward Boundary Option 2 Evaluation

Principle	Does Proposed Ward Boundary Structure Meet Requirements of Principle?	Comment
Representation by Population	Largely successful	Thirteen wards within desired range of variation and two outside of the range (one above, one below)
Population and Electoral Trends	Yes	All wards within acceptable range
Means of Communication and Accessibility	Partially successful	Generally clear markers; limited access highways cut through six wards
Geographical and Topographical Features	Largely successful	Two wards on the western side include neighbourhoods above and below the Escarpment
Community or Diversity of Interests	Largely successful	Communities of interest not divided internally but some groupings include diverse settlements
Effective Representation	Yes	No significant population discrepancy

# Ward Boundary Option 3



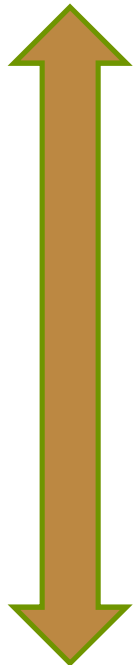
# Ward Boundary Option 3 Evaluation

Principle	Does Proposed Ward Boundary Structure Meet Requirements of Principle?	Comment
Representation by Population	Largely successful	One ward above the top of the range, three below the range
Population and Electoral Trends	Largely successful	One ward just above the top of the range, two below the range
Means of Communication and Accessibility	Partially successful	Generally clear markers; limited access highways cut through two wards
Geographical and Topographical Features	Largely successful	Two wards include neighbourhoods above and below Escarpment
Community or Diversity of Interests	Yes	Communities of interest not divided internally but some new groupings to experience are proposed
Effective Representation	Largely successful	No significant dilution of representation and all wards are coherent collections of communities

# Evaluation Comparison

Meet Requirements of Guiding Principle?

Higher Rating



Lower Rating

Existing Ward Structure	Option 1 (modified existing structure)	Option 2 (15-ward Option)	Option 3 (16-ward Option)
		<ul style="list-style-type: none"> <li>Population and Electoral Trends</li> <li>Effective Representation</li> </ul>	<ul style="list-style-type: none"> <li>Community or Diversity of Interests</li> </ul>
<ul style="list-style-type: none"> <li>Geographical and Topographical Features</li> </ul>	<ul style="list-style-type: none"> <li>Geographical and Topographical Features</li> </ul>	<ul style="list-style-type: none"> <li>Representation by Population</li> <li>Geographical and Topographical Features</li> <li>Community or Diversity of Interests</li> </ul>	<ul style="list-style-type: none"> <li>Effective Representation</li> <li>Representation by Population</li> <li>Population and Electoral Trends</li> <li>Geographical and Topographical Features</li> </ul>
<ul style="list-style-type: none"> <li>Means of Communication and Accessibility</li> <li>Community or Diversity of Interests</li> </ul>	<ul style="list-style-type: none"> <li>Means of Communication and Accessibility</li> <li>Community or Diversity of Interests</li> </ul>	<ul style="list-style-type: none"> <li>Means of Communication and Accessibility</li> </ul>	<ul style="list-style-type: none"> <li>Means of Communication and Accessibility</li> </ul>
<ul style="list-style-type: none"> <li>Representation by Population</li> <li>Population and Electoral Trends</li> <li>Effective Representation</li> </ul>	<ul style="list-style-type: none"> <li>Representation by Population</li> <li>Population and Electoral Trends</li> <li>Effective Representation</li> </ul>		

# Conclusions

---

- p This evaluation suggests strongly that the existing ward boundary configuration does not meet the expectations of three of the guiding principles – representation by population, population and electoral trends, and effective representation.
- p This Review suggests that Hamilton would be better served by an alternative ward boundary configuration.

# Conclusions (Cont'd)

---

- p While Option 1 represents a marginal improvement to the status quo, the Option does not address the structural deficiencies present in the existing ward structure.
- p Option 2 (15-ward configuration) and Option 3 (16-ward configuration) both successfully address shortcomings identified in the present system.



# Conclusions (Cont'd)

---

- p Options 2 and 3 provide wards that are better balanced in population now and over the next three elections while accommodating a significant geographic community of interest and the various emerging neighbourhoods across the City.
- p Option 2 or Option 3 is recommended as a viable ward boundary option for the City to ensure effective and equitable representation for the residents of Hamilton both today and over the next decade.

# Conclusions (Cont'd)

---

- p We recommend that Council consider the adoption of a new 15-ward or 16-ward configuration for the 2018 election as identified in this Review.
- p When Council adopts a revised ward structure, a new by-law will be prepared by City staff and presented to Council at a later date.