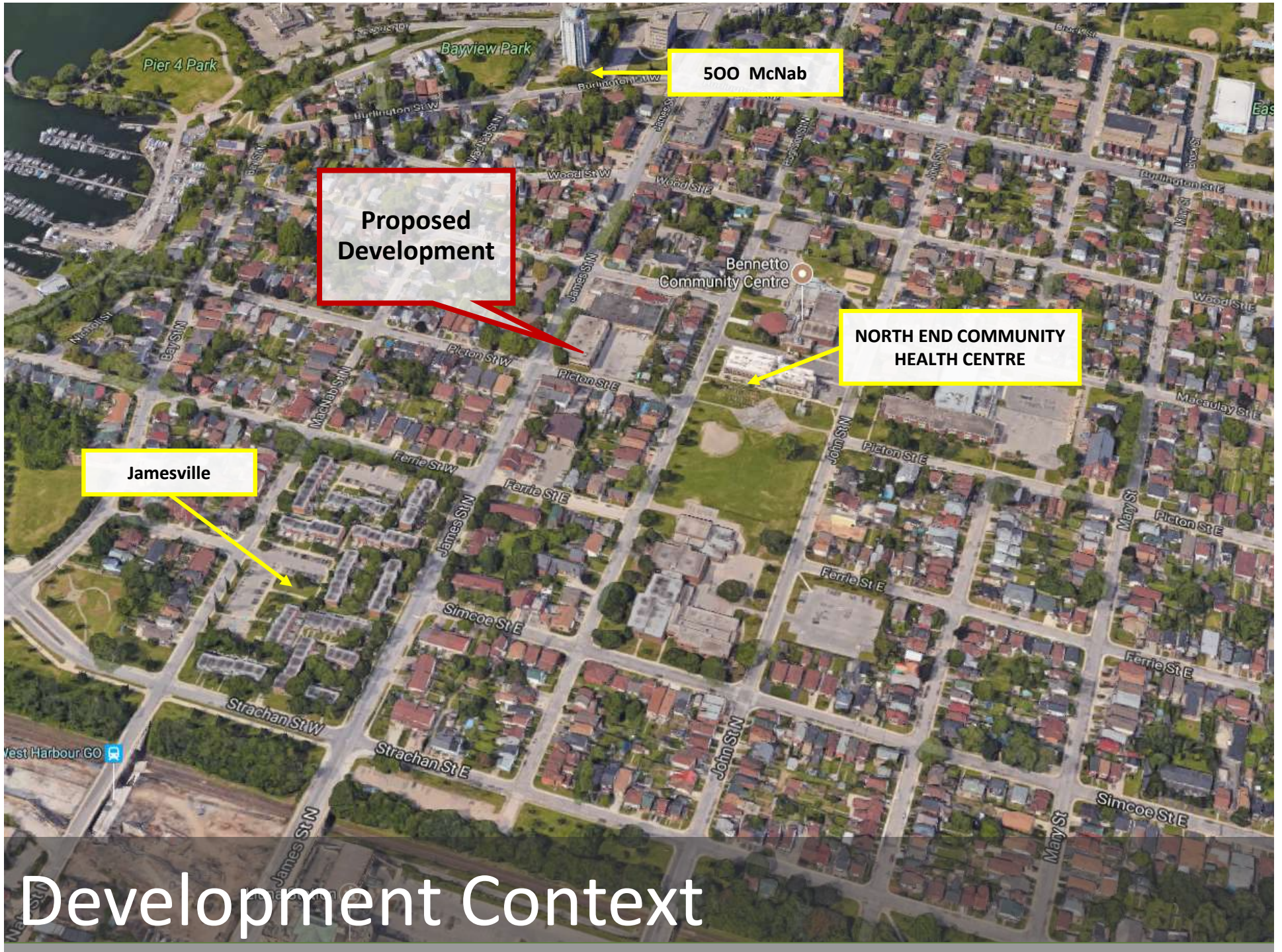


500-512 JAMES STREET NORTH





**Proposed
Development**

500 McNab

Jamesville

**NORTH END COMMUNITY
HEALTH CENTRE**

Bennetto
Community Centre

Development Context





Community Consultation



June 1, 2016: COMMUNITY INPUT SESSION (100 neighbours)

Oct. 19, 2016: NEIGHBOURHOOD FOCUS GROUP (20 neighbours)

Dec. 6, 2016: PUBLIC OPEN HOUSE (60 neighbours; Councillor Farr)

Dec. 19, 2016: DISCUSSION WITH ADJACENT NEIGHBOUR

June 22, 2017: COMMUNITY UPDATE (20 neighbours)

Original Design (June 2016)





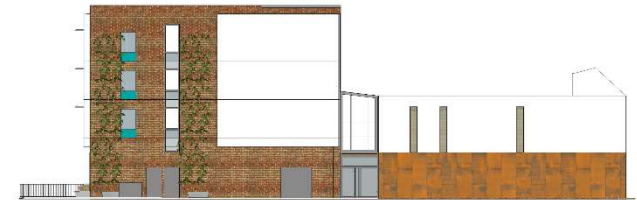
Southwest view



West Elevation



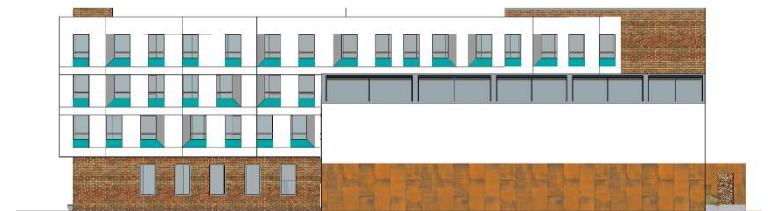
South Elevation



East Elevation



Northeast view



North Elevation

Revised and Current Design

Sun Shadow: June 21ST at 5:30pm





**Onsite
Parking:
20 spaces**

**NORTH END COMMUNITY
HEALTH CENTRE
26 spaces**

**HEALTH CENTRE OVERFLOW
94 spaces**

Parking



Partners:

