



Hamilton

# Population Health Assessment: Measuring the Health of Hamiltonians

November 13, 2017

Epidemiology & Evaluation  
PBI, PUBLIC HEALTH SERVICES

## Outline & Objectives

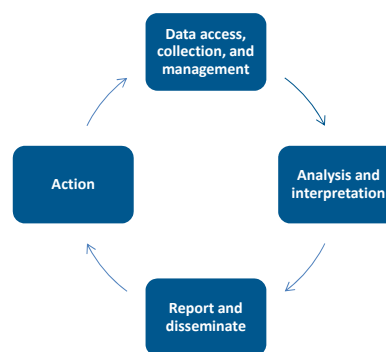
### **Outline:**

1. Overview of population health assessment
2. Population health assessment products
3. Public health needs in Hamilton

## Overview of Population Health Assessment (PHA)

## What is Population Health Assessment?

**Population Health Assessment (PHA)** is the measuring, monitoring, and reporting of the health of the population (SPHPS, 2017).



Source: Population Health Assessment & Surveillance Protocol, 2016

**We commonly use  
20+ data sources!  
Select examples:**

**What data do we have?**

**Oral Health Information  
Support System (OHIS)**



Hamilton PHS did **100,085 oral screenings** of school children since 2011

**Integrated Public Health  
Information System  
(iPHIS)**



There were **35,091 infectious diseases** reported to Hamilton PHS since 2005

**Canadian Community  
Health Survey (CCHS)**



**1,493 Hamiltonians** completed the 2013-2014 Canadian Community Health Survey.

**Better Outcomes  
Registry & Network  
(BORN)**



Data on **21,000 local births** is captured for the past 4 years

**Why is PHA important?**

**Decision Making**

- Good decisions are based on good evidence.

**Planning and  
Evaluation**

- What services are a priority? Are the services working?

**Policy  
Development**

- Informs actionable healthy public policies.

**Strategic  
Spending**

- How can limited resources have the greatest impact?

**Accountability**

- Are we fulfilling our mandated requirements?

**Awareness and  
Advocacy**

- Used to popularize important issues.

## Evidence-Informed Decision Making

### 4 domains of evidence that inform decision making:

**Population Health Assessment** can identify local health issues in our community



Source: National Collaborating Centre for Methods and Tools

## PHA is a priority and a mandate



**Mapping Wellness:** “Local-level population health data can be used to make informed, evidence-based decisions to improve the health of communities, through targeted investment and planning.”

- Dr. David Williams, Chief Medical Officer of Health



**Standards of Public Health Programs and Services** (2017): PHA is a Foundational Standard of the MOHLTC’s mandate.

- **Boards of Health are required to do and use PHA.**
- Greater emphasis on **health equity** assessment



**Patients First:** support health system planning with LHINS

- Defined set of indicators to inform planning
- Local assessment to address information needs
- Knowledge and expertise to translate health information into health intelligence

## Population Health Assessment (PHA) Products

### Quiz:

How much do we know about Hamilton's health?

#### True or False?

Over 20,000 yearly visits to Hamilton ERs for injuries due to falling

TRUE

Less than 30% of Hamiltonians have ever used an illegal drug

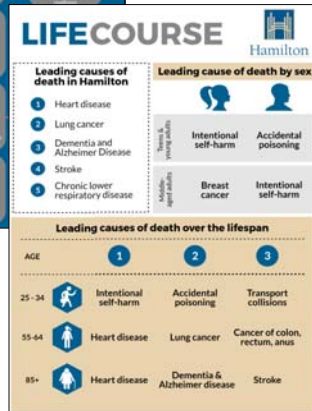
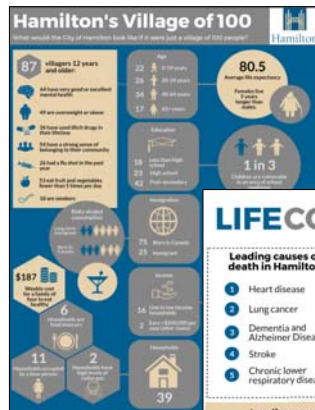
FALSE  
43%

Suicide is the leading cause of death for Hamiltonians under 45

TRUE

Annually, over 50 local deaths are attributed to radon exposure

TRUE

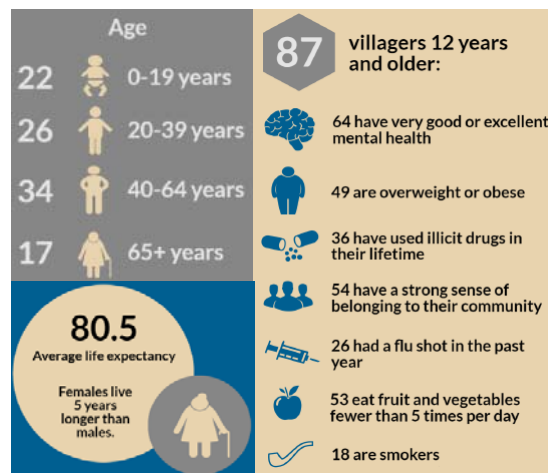


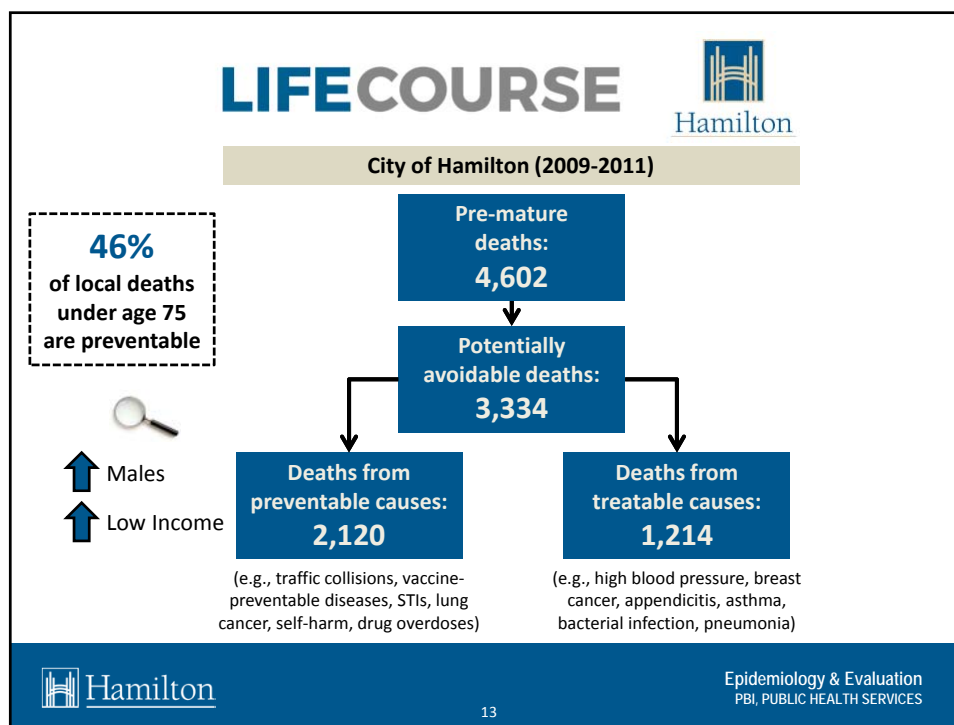
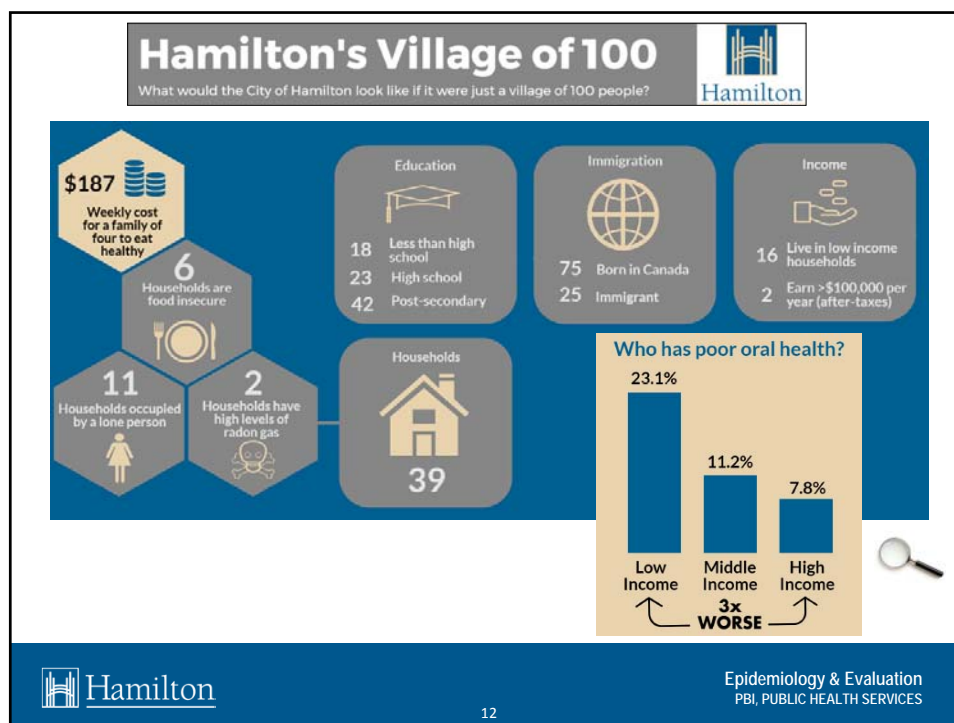
## Examples of PHA products

- **Village of 100:** what would our community look like if it were just a village of 100 people?
- **LifeCourse:** what are the health problems at different stages of life in Hamilton?

## Hamilton's Village of 100

What would the City of Hamilton look like if it were just a village of 100 people?





# LIFECOURSE



## Leading causes of death in Hamilton

- 1 Heart disease
- 2 Lung cancer
- 3 Dementia and Alzheimer Disease
- 4 Stroke
- 5 Chronic lower respiratory disease

## Leading cause of death by sex



Teens & young adults

Intentional self-harm

Accidental poisoning

Middle-aged adults

Breast cancer

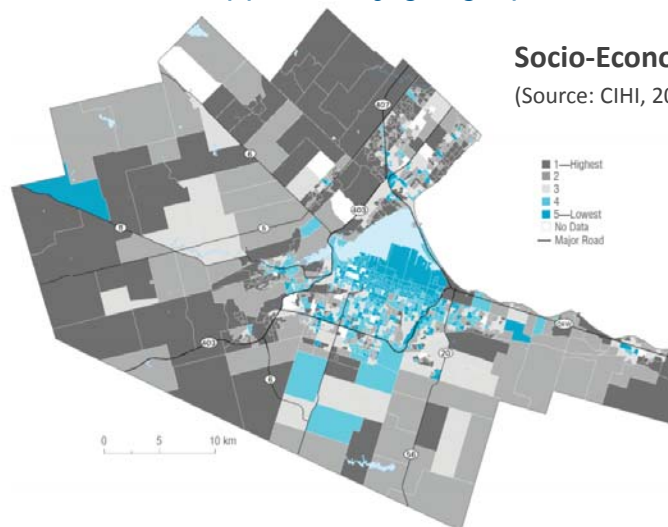
Intentional self-harm



14

Epidemiology & Evaluation  
PBI, PUBLIC HEALTH SERVICES

## PHA supported by geographic information systems

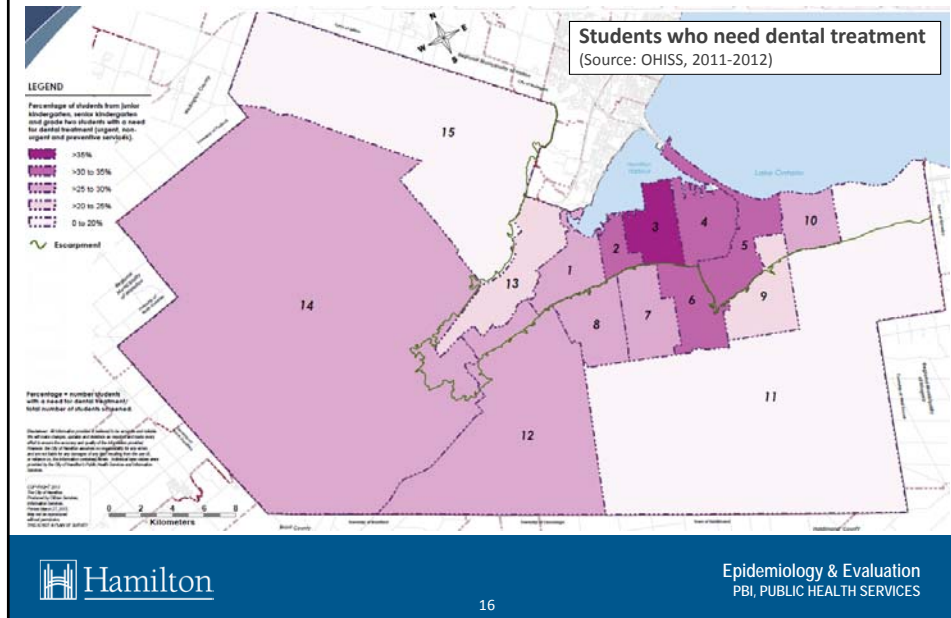


15

Epidemiology & Evaluation  
PBI, PUBLIC HEALTH SERVICES



## PHA supported by geographic information systems



16

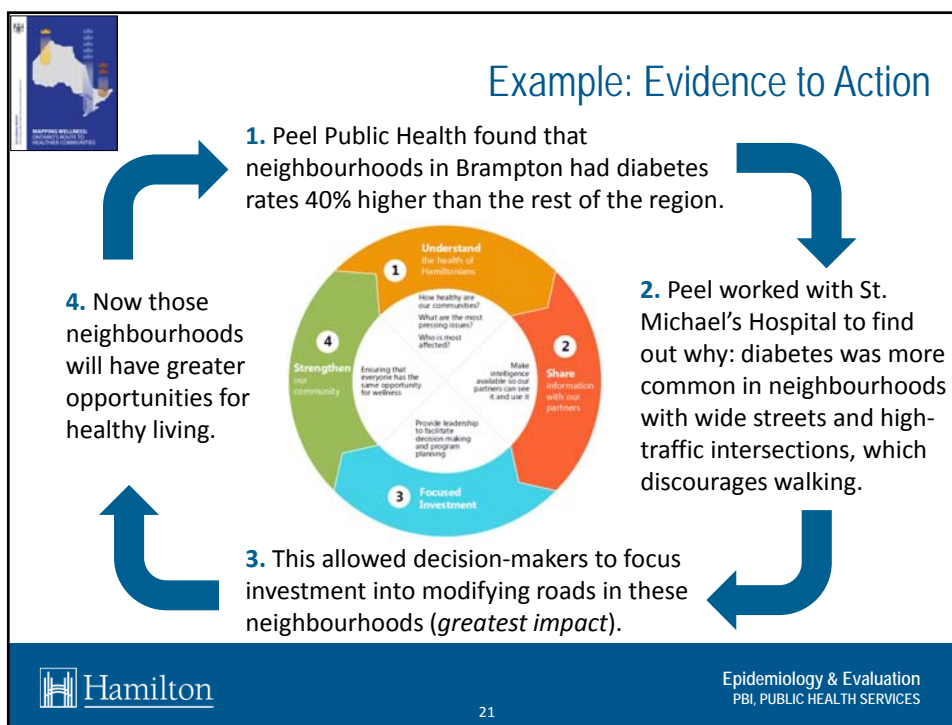
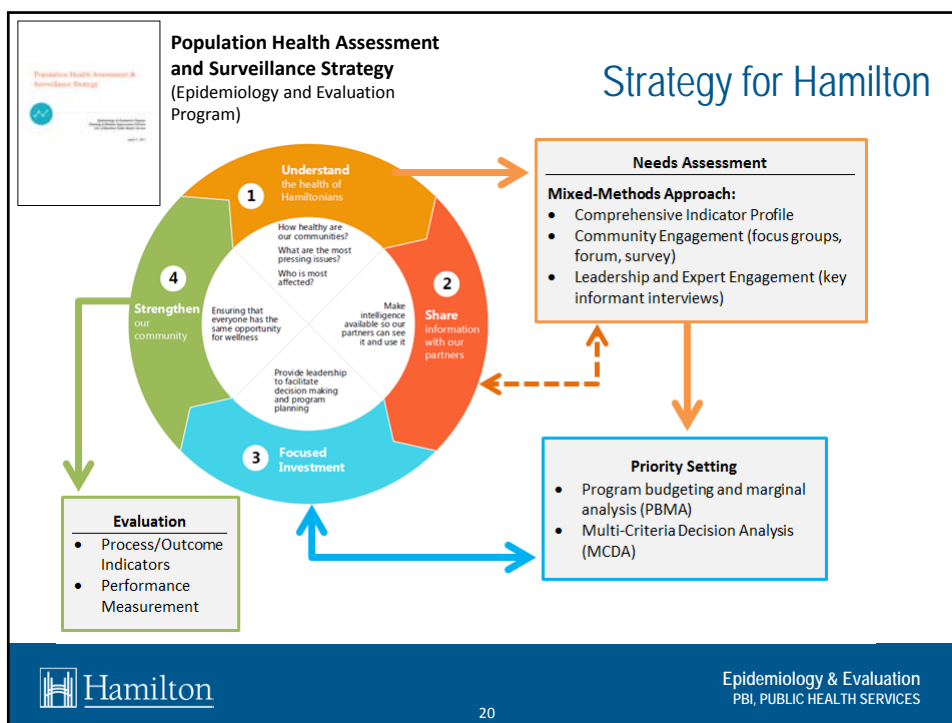


## Evidence to Action: Hamilton's Opioid Response

- Leading up to 2016, opioid use identified as an emerging local issue... this resulted in data-driven actions:

ACTION	ROLE OF DATA	DATA
Naloxone expansion; increased hours for needle exchange	Data collection and reporting of service utilization	>600,000 needles collected in 2015 compared to 50,000 in 2000
Opioid response strategy	Allows for data sharing between partners & alerts	Data sharing with HPS: 307 paramedic calls in Q1-3 of 2017
Communication and awareness campaign	Data informs key messages & used to raise awareness	52 Hamiltonians died of opioid overdoses last year
Monitoring system on our website	Data made available to the community	Week of Oct 9 <sup>th</sup> : 28 ER visits for suspected drug overdoses
Began feasibility study of SIS	Data being used to determine need for SIS	Interviews with residents who have lived experience

## Public Health Needs in Hamilton

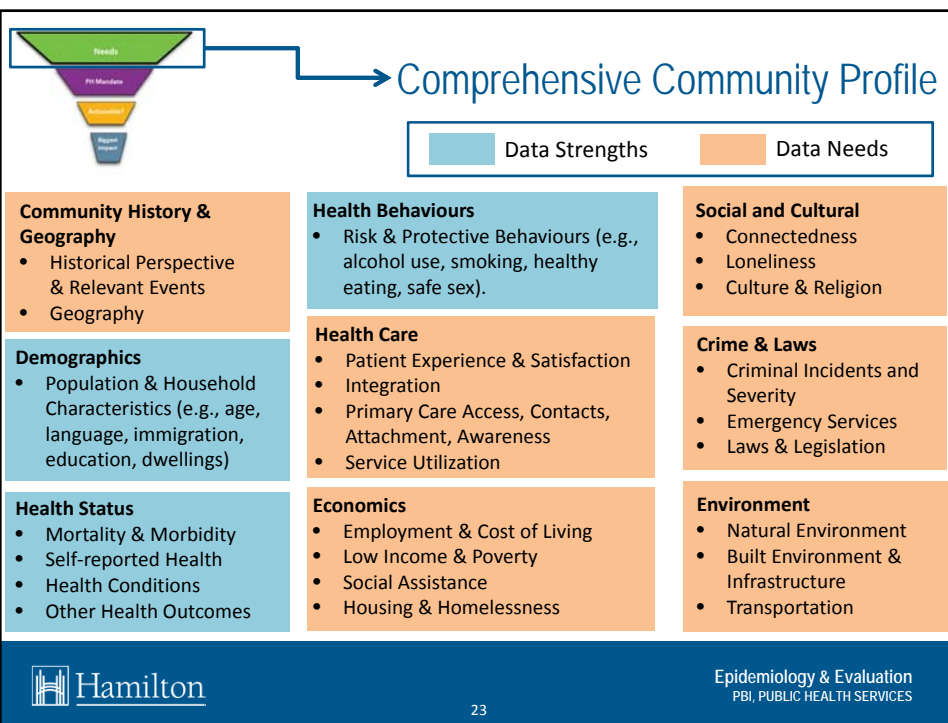
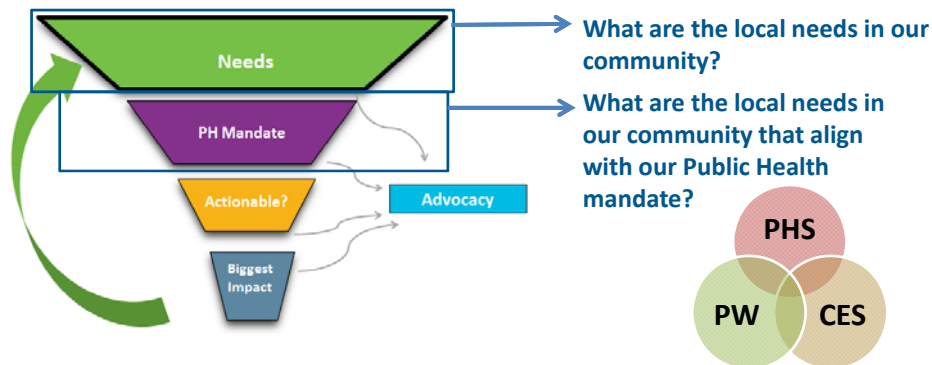


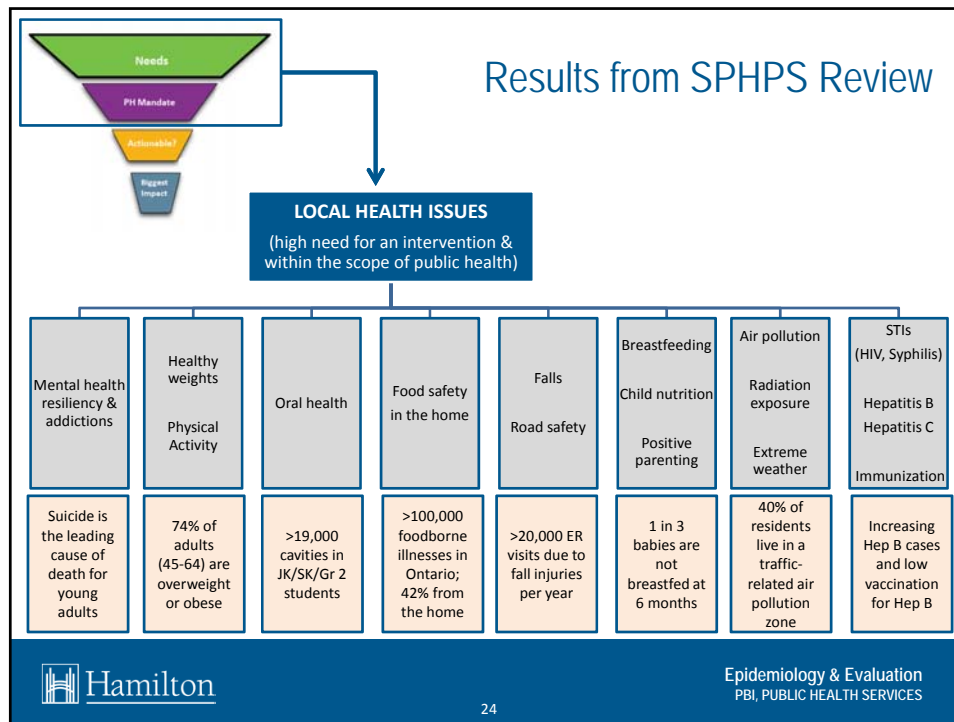
## How is Hamilton using PHA?

PHA is being used in the implementation of our new public health mandate:

### Standards for Public Health Programs and Services (SPHPS)

- Plan and implement programs/services based on local need.
- PHA used to determine the magnitude of need in Hamilton.





## Results from SPHPS Review

**Priority Populations:**

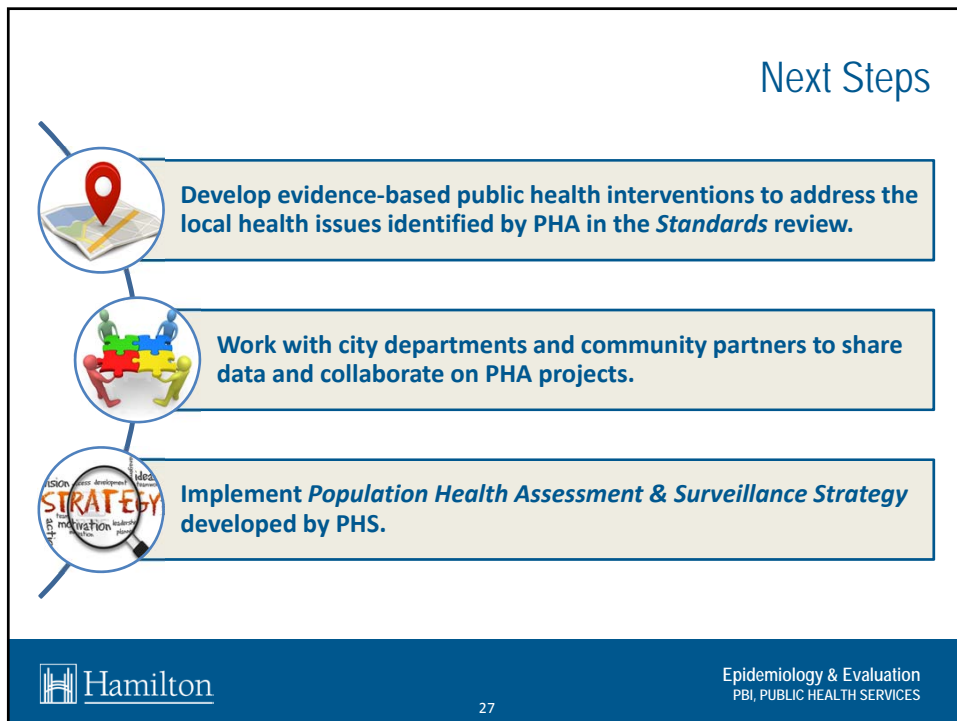
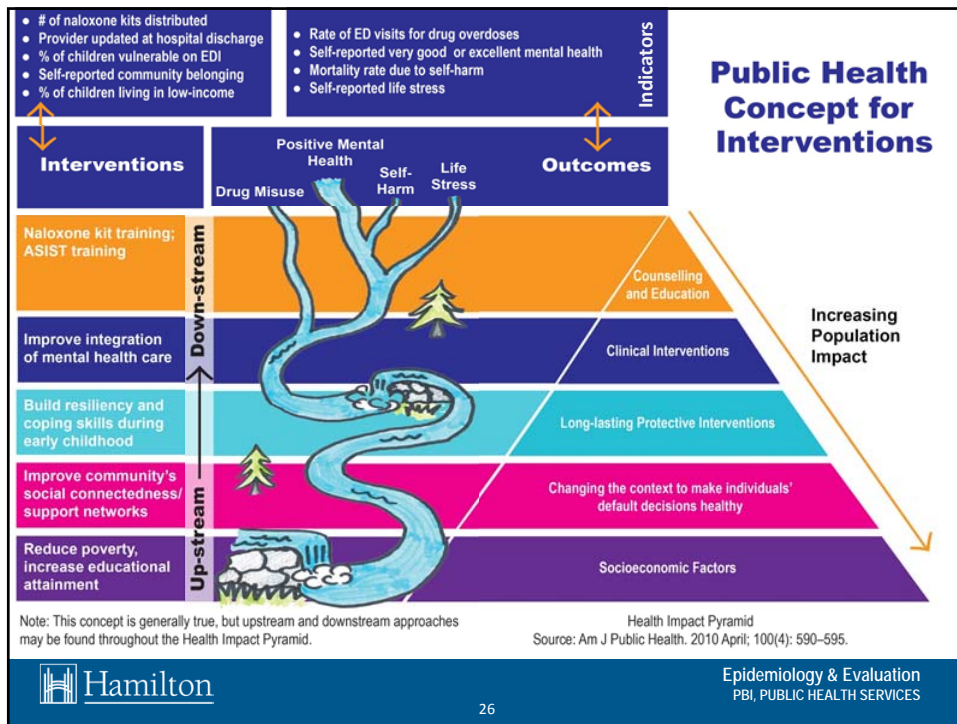
- Population is disadvantaged with respect to one or more determinants of health or population is at risk for adverse health outcomes.
- Public health interventions may be reasonably considered to have a substantial impact at the population level

*Examples:*

Local Health Issue	Mental health	Healthy weights & risk factors	Food safety in the home	Falls	Road safety	Extreme weather	STI (syphilis, HIV)	Oral Health
Local Priority Population	Females under 20 Males 45-64 Low income	Youth Males Low income	Seniors Children	Seniors Children	Males 20-44	Males Low income High dependency	Males 20-54 Men who have sex with men (MSM)	Low income

**Hamilton** Epidemiology & Evaluation  
PBI, PUBLIC HEALTH SERVICES

25



## Take Away Messages

**PHA is mandated and a priority**

**PHA is important for decision-making and strategic spending**

**Work with others & provide intelligence to our community**

**This work is just beginning: it will be evolving and growing...**

Thank you