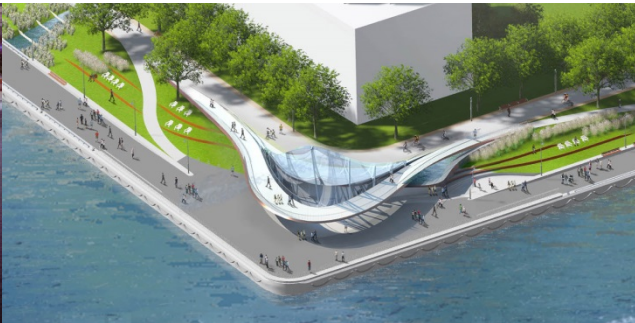




# PIER 8 PROMENADE PARK DESIGN COMPETITION



# PIER 8 PROMENADE PARK DESIGN COMPETITION



# THE SITE



## THE PROCESS

- Six Design Teams prequalified in April through an open call
- Each team prepared a design proposal for the park responding to a series of design objectives and including a series of program requirements for a fixed construction budget of \$6,490,000 and fixed consultant fee.
- Design proposals were reviewed by staff to determine that proposals satisfied programming, maintenance, health, safety and accessibility requirements and cost estimates are at or below the budget.
- Public consultation took place from August 24<sup>th</sup> to September 10<sup>th</sup> beginning with public presentations at the AGH and continuing on-line, at the Lister Building, William's Café and the Evergreen Storefront.
- A jury of sector experts will meet September 13<sup>th</sup> to select a winning proposal based on response to context, design excellence, response to the design objectives and public consultation results. A Jury Report outlining their discussion has been posted on-line.
- The winning design team will then enter into a contract with the city to complete the detail design and prepare documents to implement their design. Construction is planned for spring 2018.

## THE JURY

Nadia Amoroso BLA, MUD, PhD, ASLA  
Director, Nadia Amoroso Studio, Professor at the University of Guelph

Shelley Falconer  
President and C.E.O. Art Gallery of Hamilton

Kelly Gilbride OAA, P. Eng., CAHP, LEED AP  
Partner Stevens Burgess Architects Ltd. (SBA)

Erik Hess OALA

Linda Irvine OALA, FCSLA, ASLA  
Manager, Parks and Open Space Development, Markham, Ontario

James Parakh OAA  
Urban Design Manager - Toronto & East York, City of Toronto, Planning Division

Mario Patitucci OALA CSLA  
Principal Adesso Design Inc.



# PIER 8

1 SITE, 3 PLACES

## THE PIER 8 TEAM

FORREC Ltd.

Designated Principle / SCOTT TORRANCE

Designated Project Leader / BRAD KEELER

Architect / TIM SCOTT

Construction Admin / BRAD KEELER

---

CIMA+

Civil Engineering / PHIL CAMPBELL

---

EXP

Electrical Engineer / ERNEST KITHSIRI

Structural Engineer / ED A. KOLODZIEJSKI

Mechanical Engineer / MURRAY W. WICKHAM

---

Creative Irrigation

Irrigation Designer / JOSEPH CARTER

---

Altus

Cost Consultant / MEL YUNGBLUT

/ KUMAR SABARATNAM

---

Andrew Davies

Public Art Consulting

Public Art Consultant / ANDREW DAVIES

# PIER 8

1 SITE, 3 PLACES



HAMMER HARBOUR



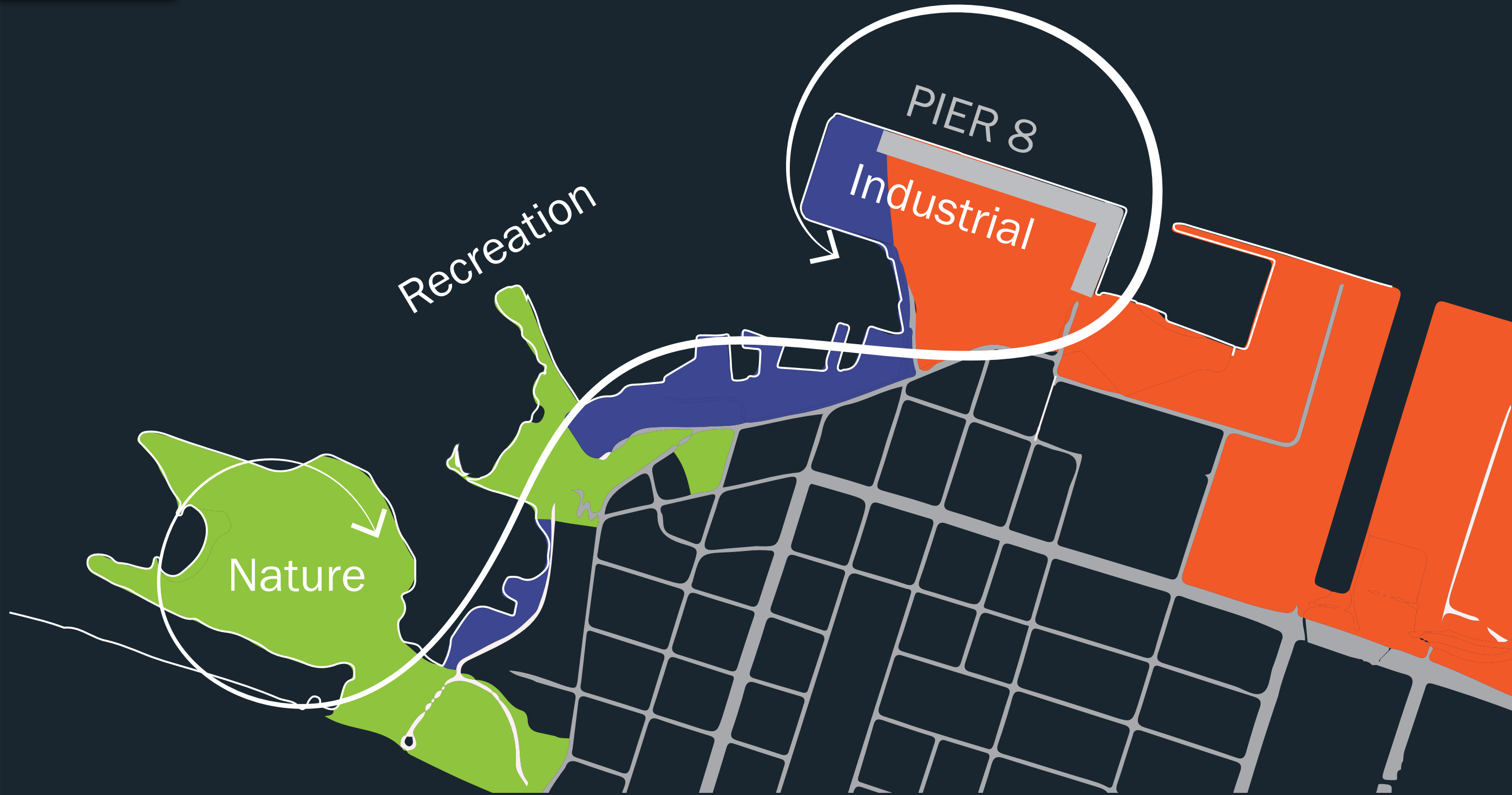
THE LANDING

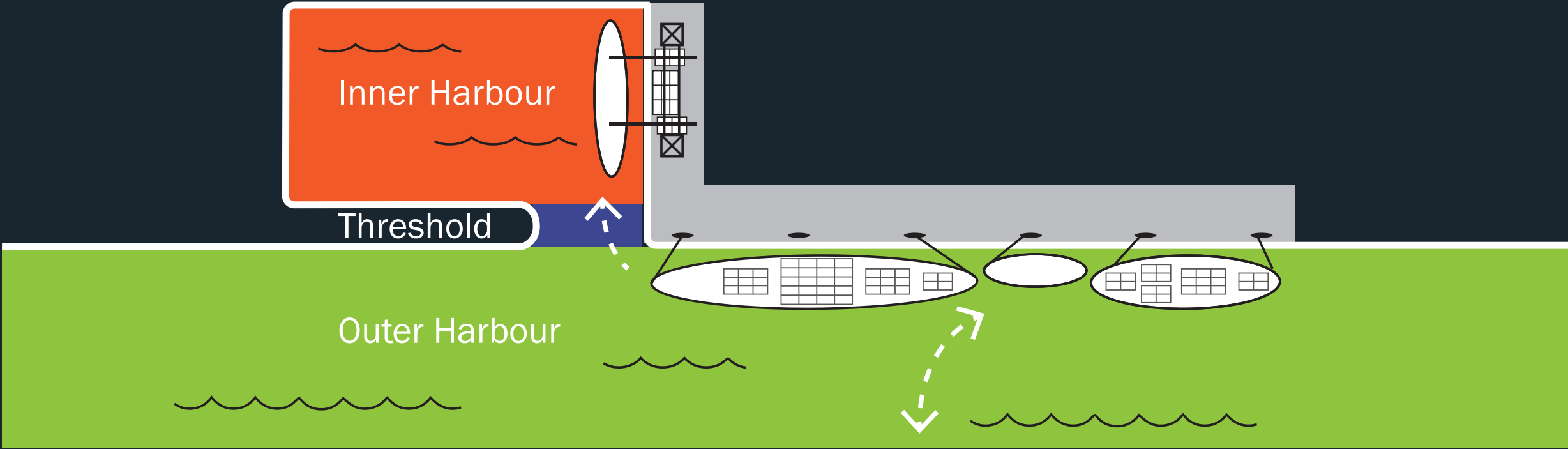


BOATWORKS PROMENADE











# HAMMER HARBOUR

GANTRY PAVILION

A



# AMPHITHEATRE & GANTRY PAVILION

Item 7.1



WINTER FESTIVAL IN GANTRY PAVILION



SUMMER CONCERT IN GANTRY PAVILION



# SUPER CRAWL ART SHOW IN GANTRY PAVILION

Item 7.1





# BOATWORKS PROMENADE

Item 7.1



STEEL BEACH

PLAYGROUND

WETLAND & PLAZA

CAFE & GAMES

B

C

D



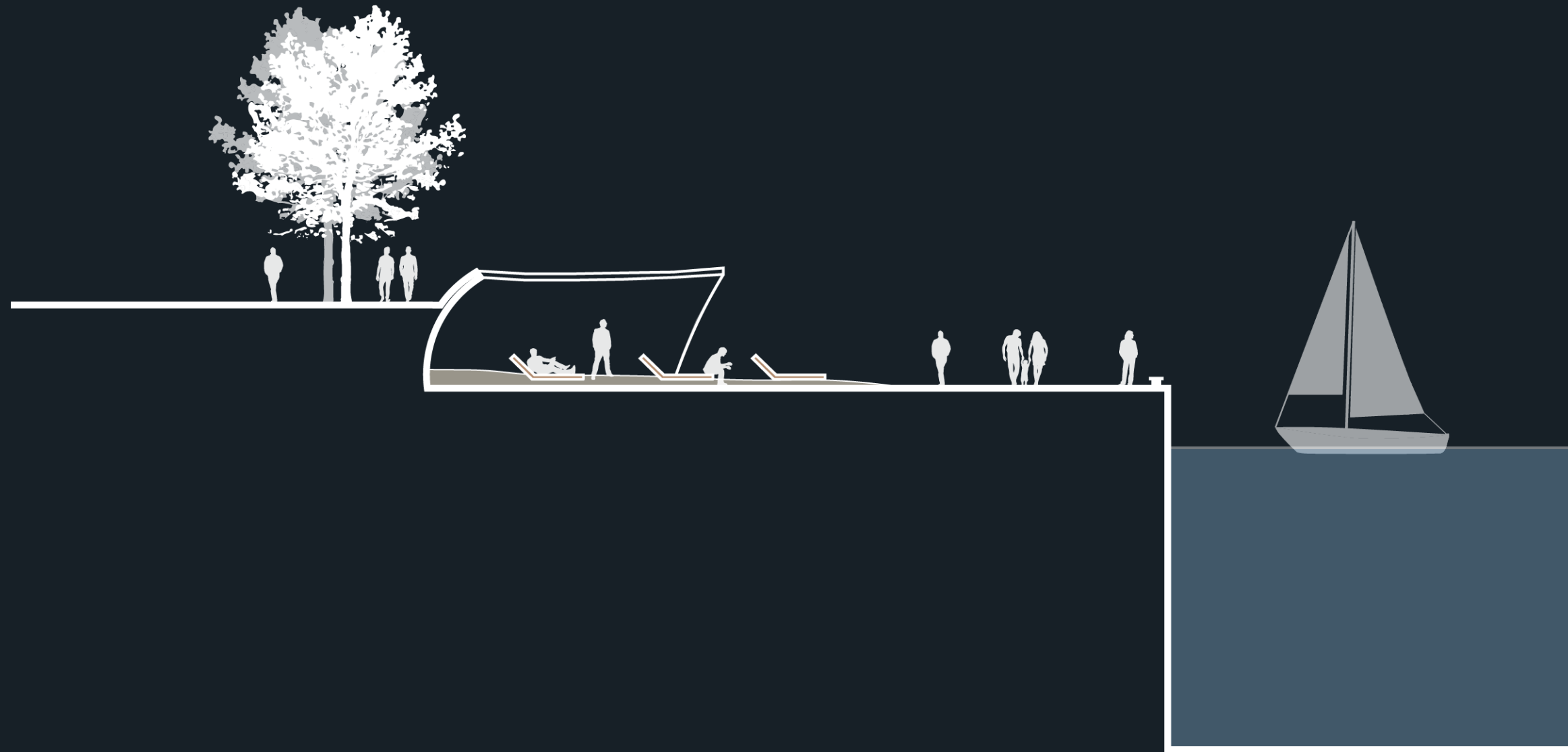
# STEEL BEACH

Item 7.1



# STEEL BEACH

Item 7.1

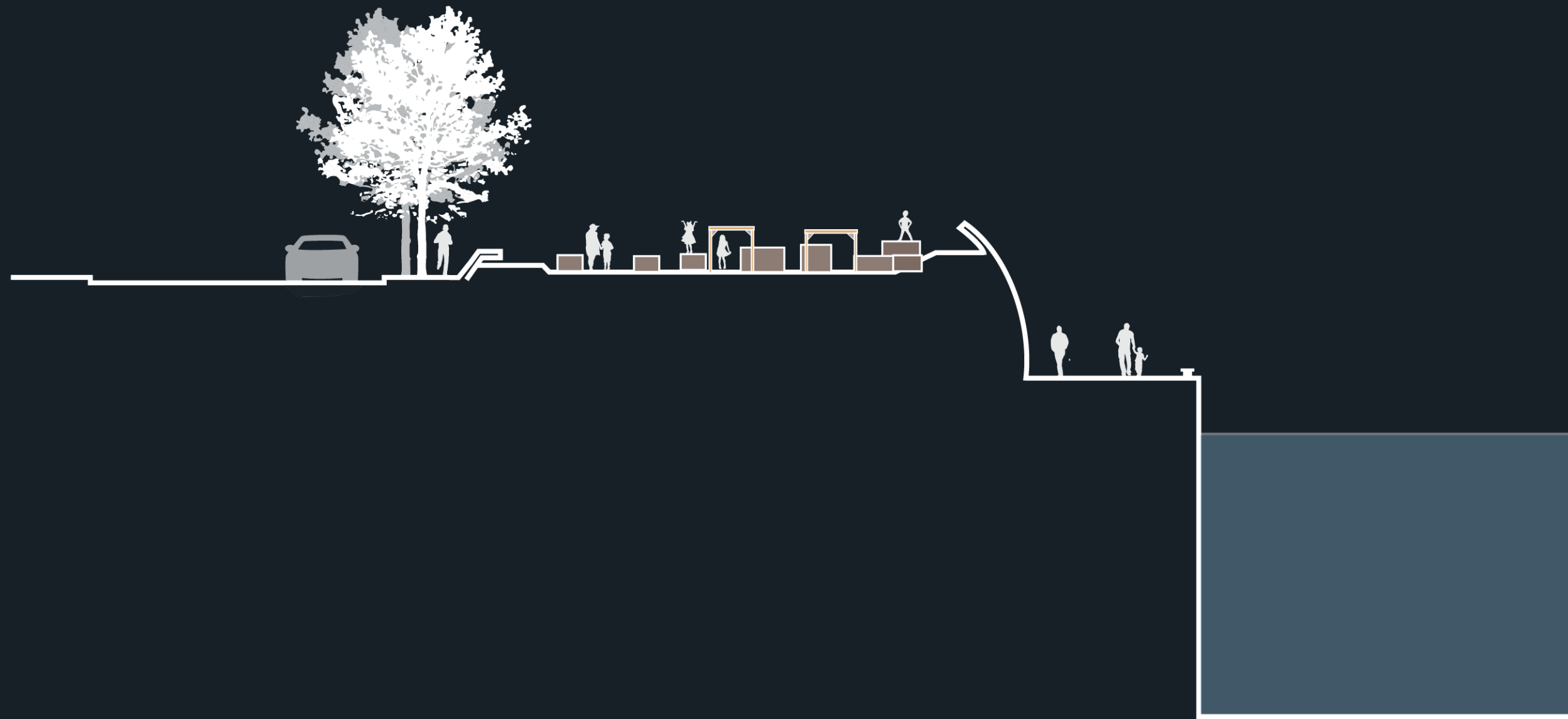


# PLAYGROUND & INTERPRETIVE SUPERGRAPHIC



# PLAYGROUND

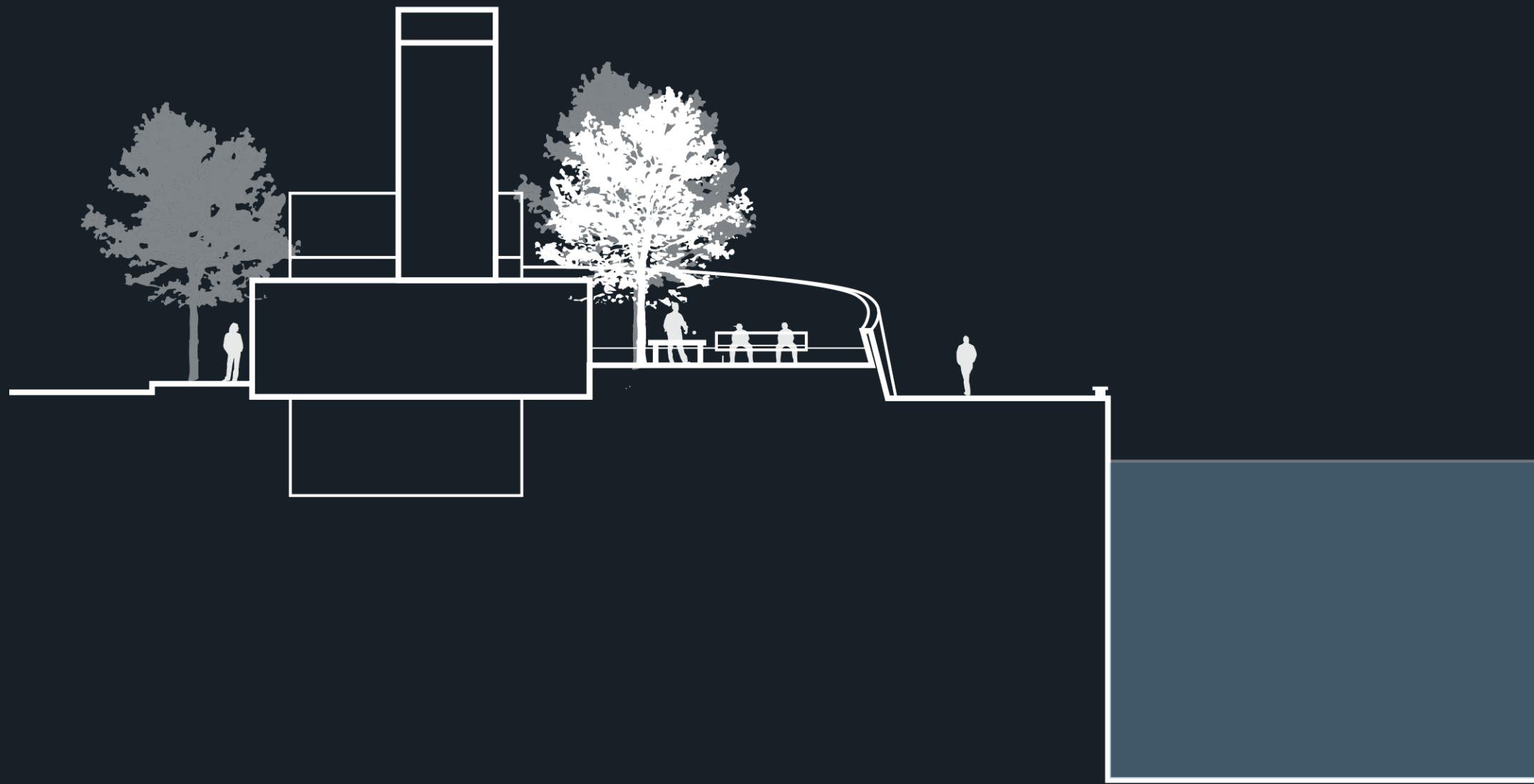
Item 7.1



# PUMPHOUSE CAFE & GAMES DECK



PUMPHOUSE CAFE & GAMES DECK



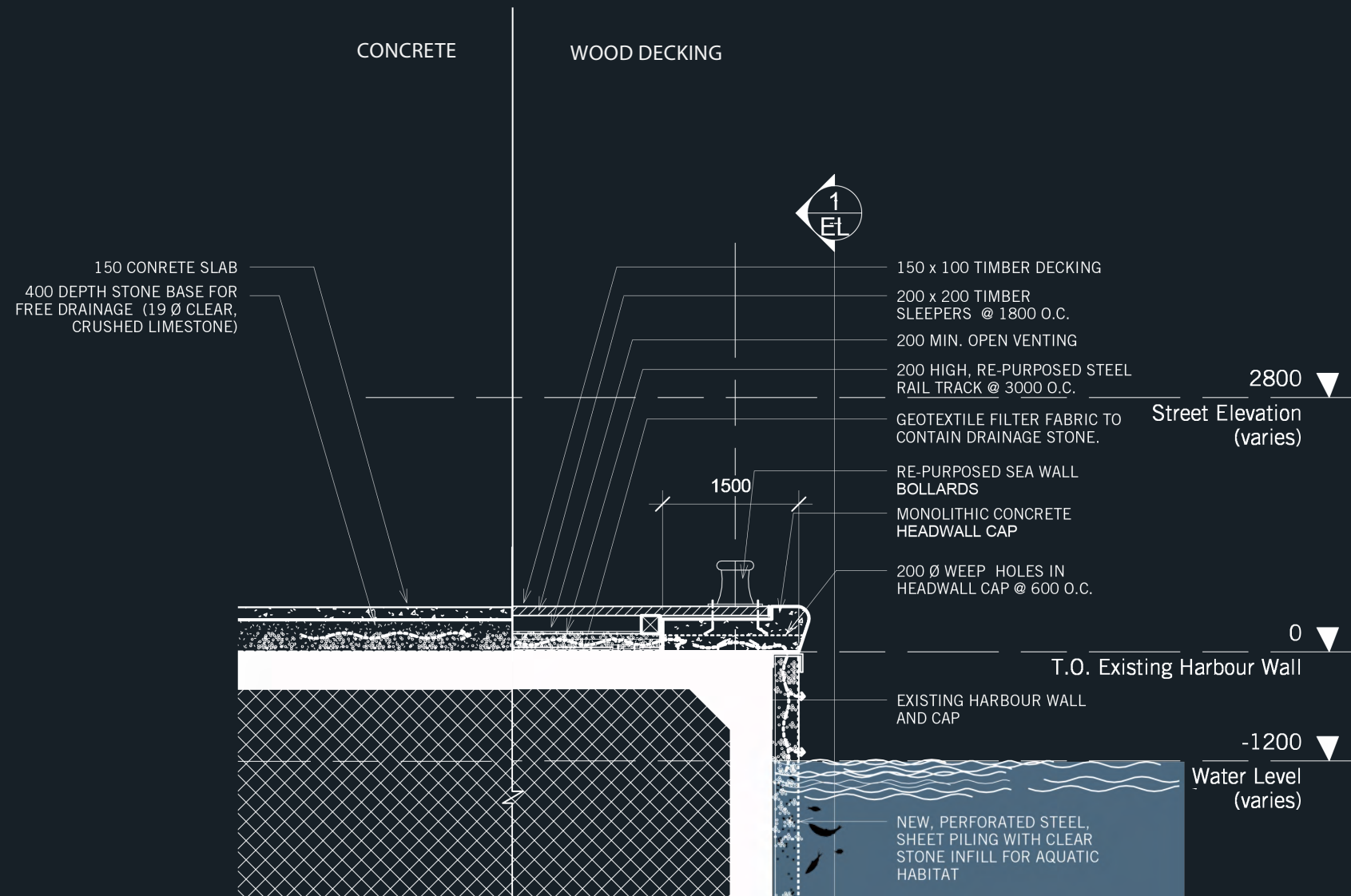
# LAKE REMEDIATION WETLAND & PLAZA

Item 7.1

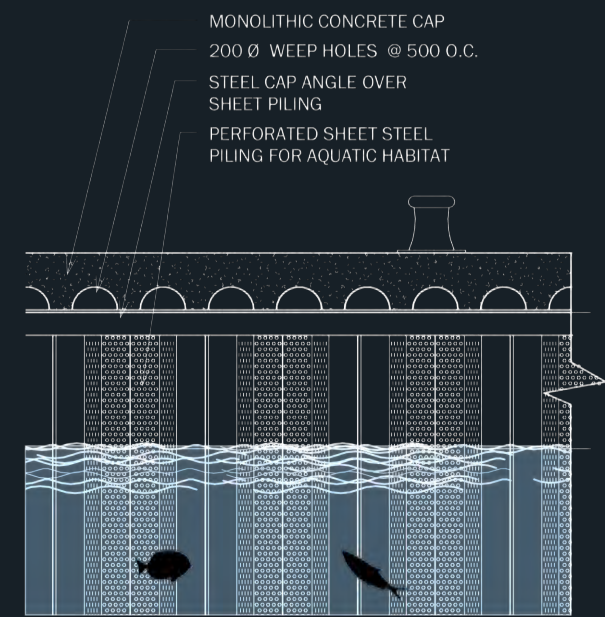


# PROPOSED HABITAT SHOREWALL

SECTION:



ELEVATION





8

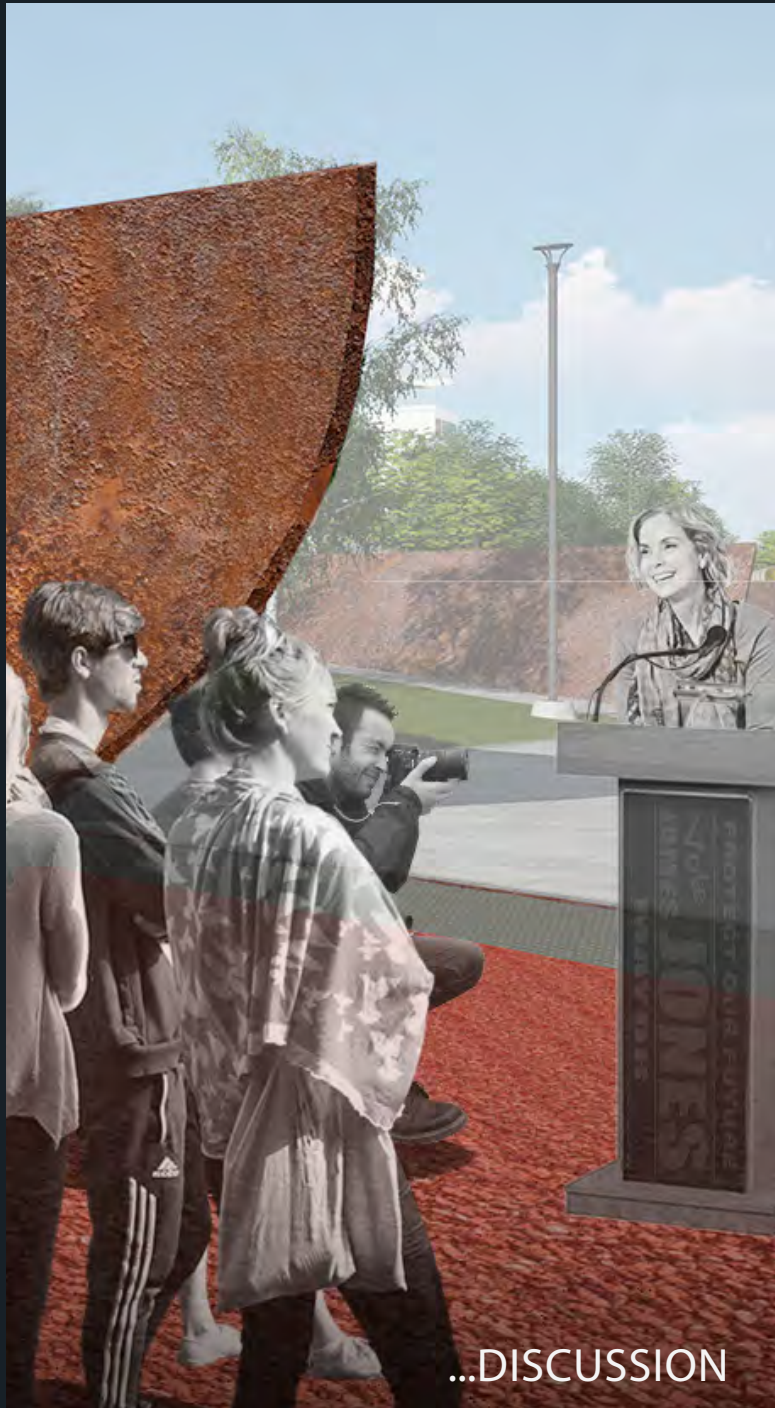
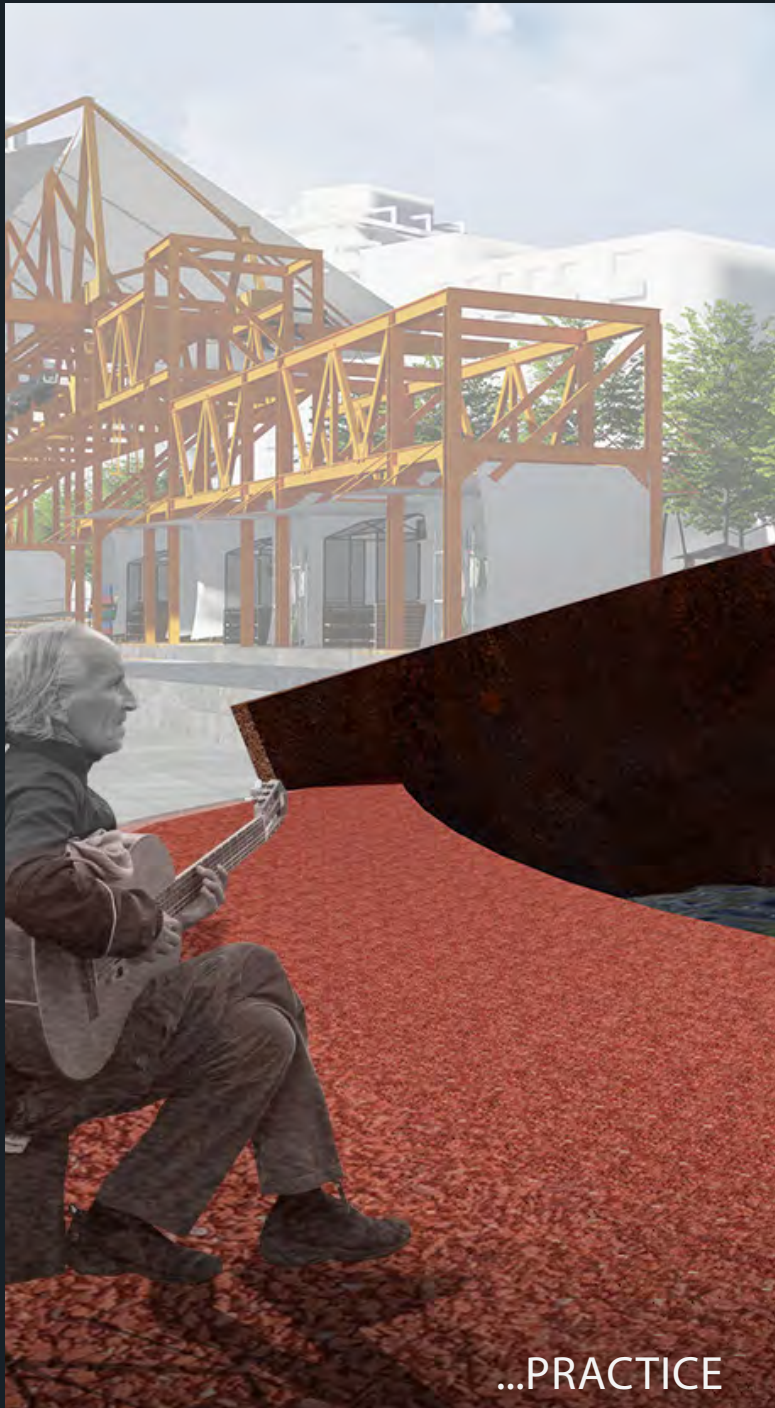


# THE LANDING

Item 7.1



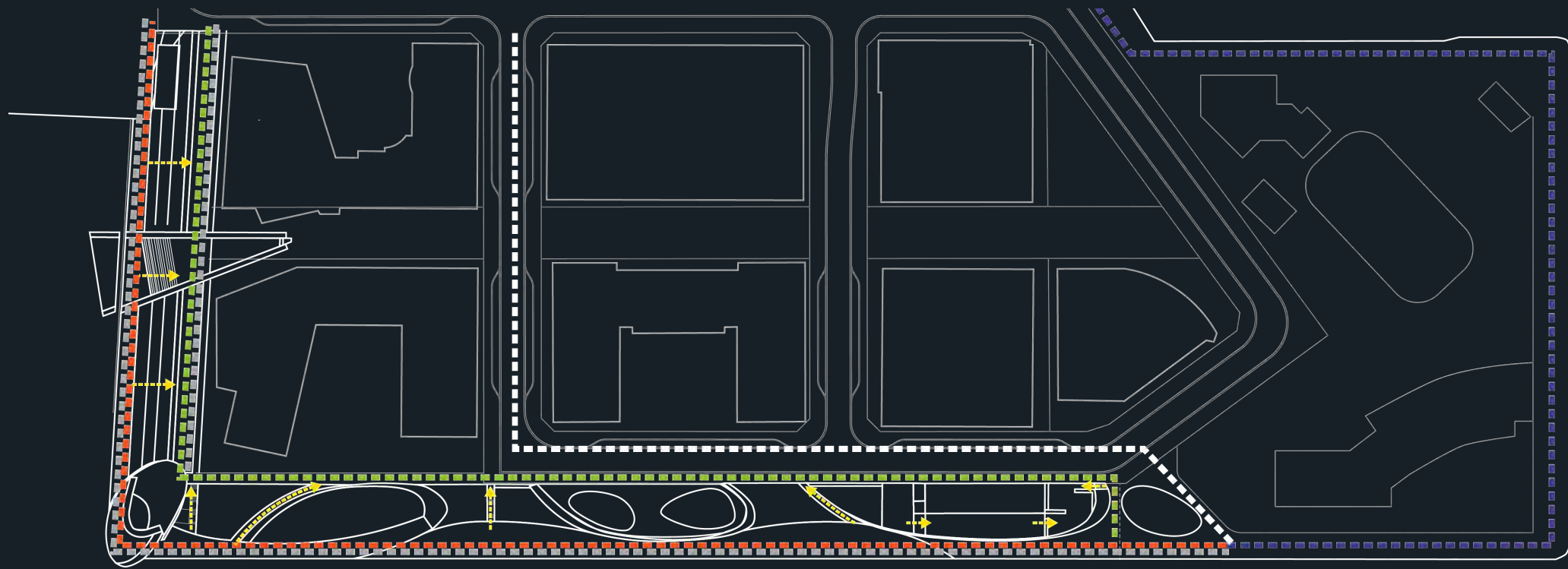
A PLACE FOR...



# SHADOW-ART INSTALLATION AT THE LANDING



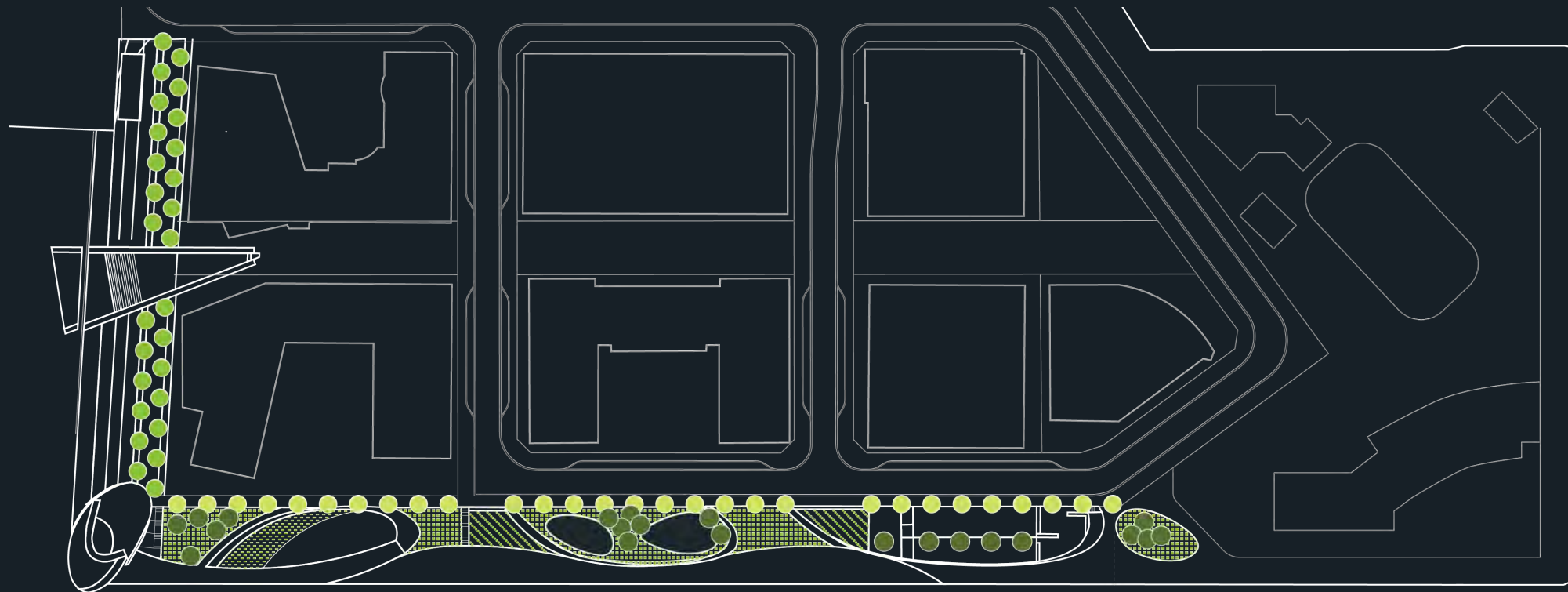
CIRCULATION PLAN



- Waterfront Trail
- Multi-use Sidewalk
- Detour to On-Street
- Multiuse-Trail
- Stairs or Ramp
- Maintenance Vehicle Access

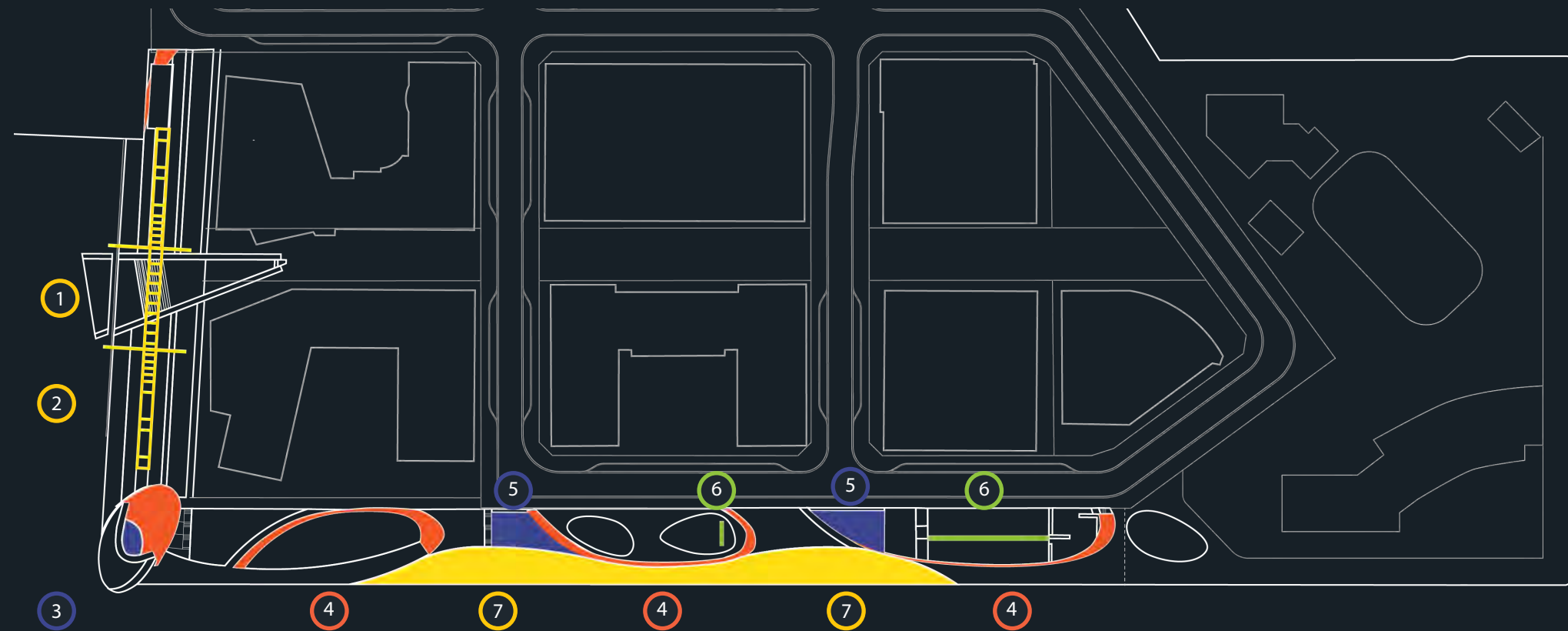
# PLANTING PLAN

Item 7.1



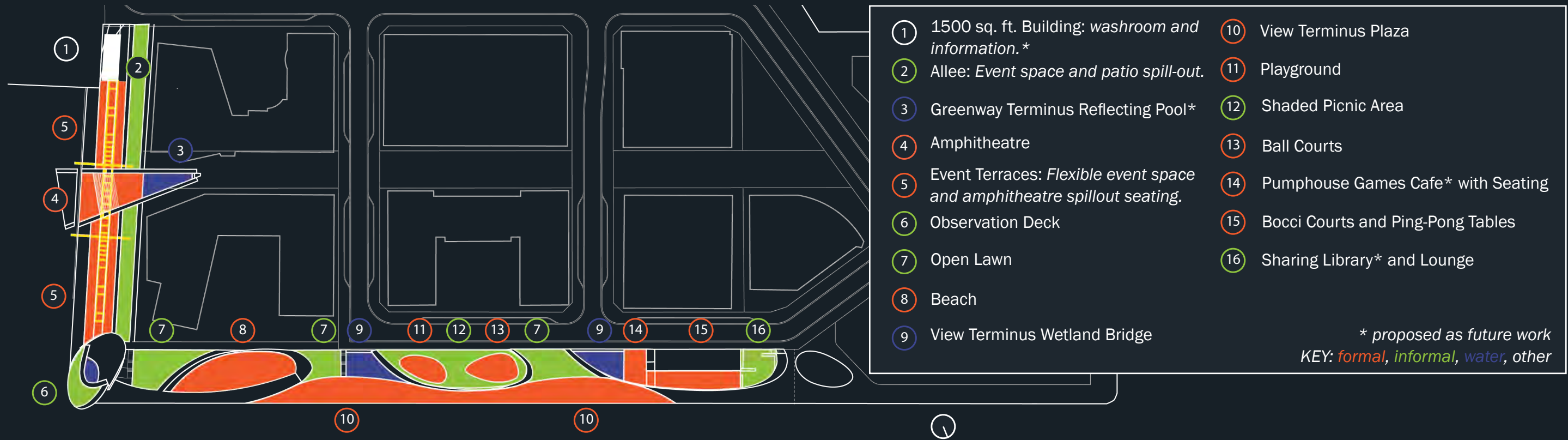
- Allee: American Elm (*Ulmus americana* var. 'Princeton')
- Sidewalk: Honey Locust (*Gleditsia triacanthos* var. *inermis*) & Hackberry (*Celtis occidentalis*)
- Groves: American sycamore (*Platanus occidentalis*), Bur Oak (*Quercus macrocarpa*) & Kentucky Coffeetree (*Gymnocladus dioica*)
- ▨ Wetland: Common Cattail (*Typha latifolia*)
- ▣ Sod
- ▤ Beach: American Beachgrass (*Ammophila breviligulata*)

ART + PERFORMANCE PLAN



- ① Outdoor Performance Space: *floating stage\* and amphitheatre seating.*
  - ② Gantry Pavilion: *Industrial structure as scaffolding for cultural events.*
  - ③ The Landing Gallery: *a permanent work by an international-level artist.\**
  - ④ Supergraphic Stories: *acid-etched on steel hulls in collaboration with local artist and community members.*
  - ⑤ Demonstrative Remediation Garden: *a wetland and sculptural aeration piece by a local artist.*
  - ⑥ Community Mural: *Mural space for work by Hamilton artists.\**
  - ⑦ Casual Performance Space: *Plaza for ad-hoch performances.*
- \* proposed as future work

# PROGRAM PLAN



# PIER 8

1 SITE, 3 PLACES



HAMMER HARBOUR



THE LANDING



BOATWORKS PROMENADE

