

# Budget Presentation

## City of Hamilton

January 23, 2018





HCA  
Watershed  
&  
2017  
Highlights



2018  
Budget  
Details







<b>Confederation Beach Park</b> Wagners Beach Road, Hamilton	<b>Crooks Hollow</b> Crooks Hollow Road, Dundas	<b>Dundas Valley</b> 650 Governor's Road, Dundas	<b>Felker's Falls</b> Ackland Street, Hamilton	<b>Fletcher Creek Ecological Preserve</b> Concession Road 7, Puslinch	<b>Tiffany Falls</b> Wilson Street East, Ancaster	<b>Westfield Heritage Village</b> 1049 Kirkwall Road, Rockton
<b>Valens Lake Conservation Area</b> Highway 5 West, Dundas	<b>Devil's Punchbowl</b> Ridge Road, Stony Creek	<b>Eramosa Karst</b> Upper Mount Albion Road, Stony Creek	<b>Fifty Point</b> 1479 Baseline Road, Winona	<b>Spencer Gorge/Webster Falls</b> Harvest Road, Greenville	<b>Valens Lake</b> 1691 Regional Road 97, Cambridge	<b>Wild Waterworks</b> 680 Van Wagners Beach Road, Hamilton

## HCA Land Holdings

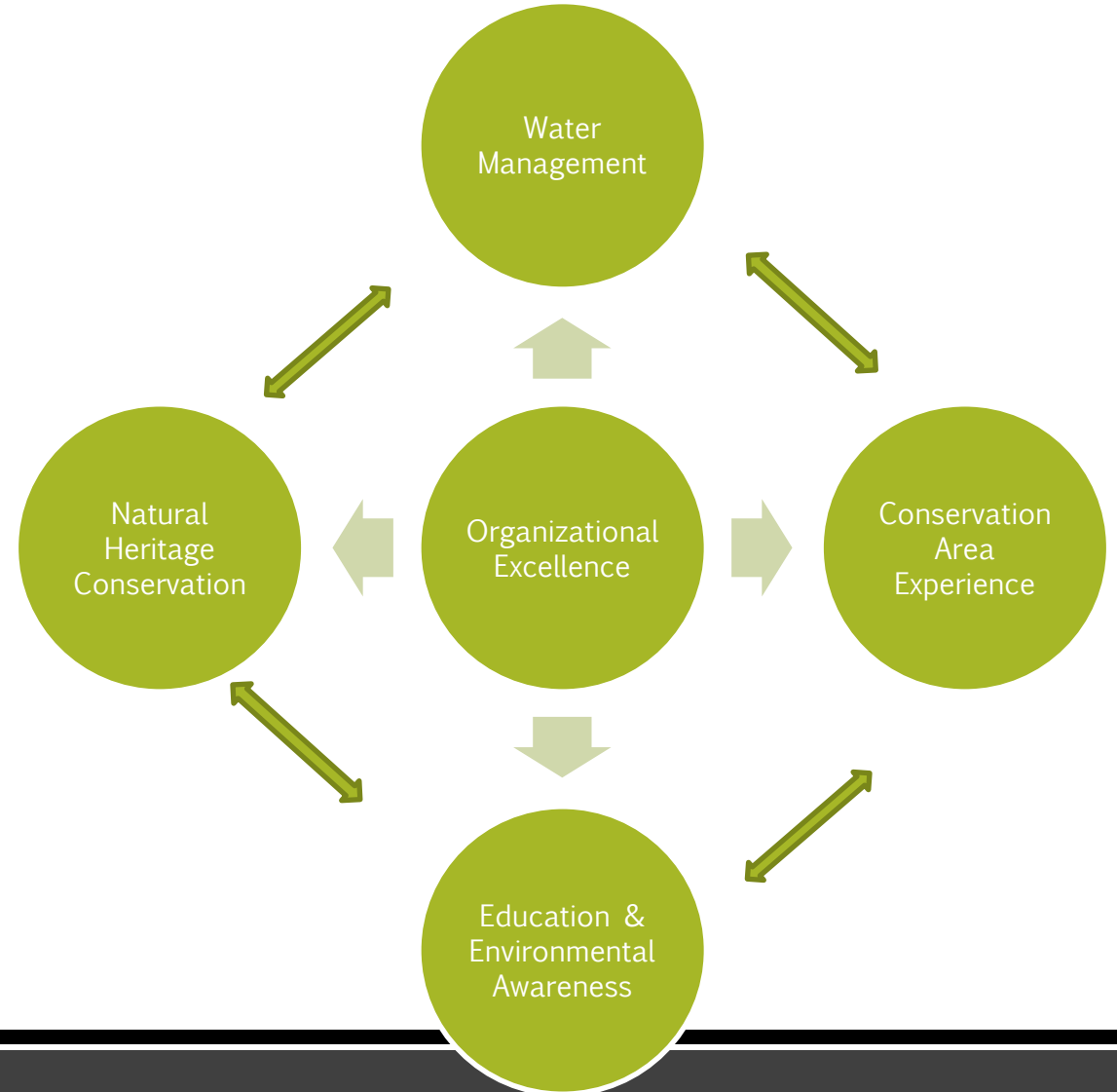
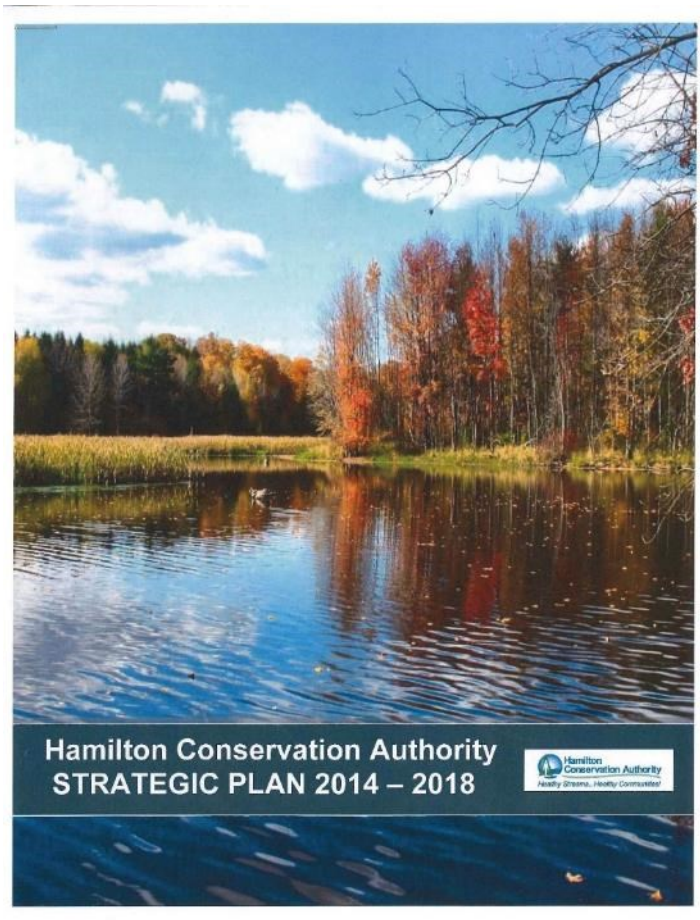
- Acreage - Over 11,000 acres, ~10% of watershed
- In last decade have significant presence on east mountain
- In 2017 HCA added:
  - Saltfleet CA
  - Crockford property to complete HCA lands acquisitions for the cootes to escarpment
  - Additional lands for Dundas Valley

# Recreation Opportunities

- Wide range of recreation for residents of Hamilton and beyond
  - Extensive recreational trails with “crown jewel” of Dundas Valley
  - 295 camp sites
  - waterfalls
  - swimming areas
  - boat rental & fishing
  - 340 boat slip marina
  - historical village
- Recreation is a key contributor to our self generated revenues



# Current HCA Strategic Plan & Goals







## Hamilton Waterfalls

Popularity and promotion through social media in the GTHA continues



## Shuttle Bus Service for Spencer Gorge

- Pilot project operated weekends and public holidays from May until end of October 2017
- Over 16,000 cars parked offsite, roughly 48,000 visitors utilized the shuttle
- Partnership and collaboration with municipal bylaw and Hamilton police, ward councillors was key



# Waterfall Safety



**Stay well back from cliff and escarpment edges.**



**Stay on the marked trails.**

- Keeping visitors safe is a priority
- HCA and City staff shared and collaborated in regard to signage and fencing and consultation with ward councillors

# Westfield Heritage Village Master Plan Underway



- Address the acquisition of an additional 144 acres of natural areas acquired since 2015
- Targeted for completion by end of summer 2018
- Guiding Document for next 10 years

# Millgrove Worksyard new Equipment Storage

F1 Tornado Damage



New Building





# Saltfleet Conservation Area East Escarpment Wetland Restoration Project

## Goal

- To create a new conservation area in the east end of the City of Hamilton to provide natural hazard attenuation, natural heritage enhancements and recreation opportunities

## Objectives Include:

- To utilize the floodplain areas of Upper Battlefield and Upper Stoney Creeks to retain water to provide flood attenuation both above and below the Niagara Escarpment
- To enhance and enlarge existing wetland areas and to create new wetland areas to provide enhanced wetland hydrologic function to reduce the impacts of high water events and provide water to area watercourses during low flow periods
- To provide linkages within and between conservation area lands by utilizing the Dofasco Trail and enhance and create passive recreational opportunities

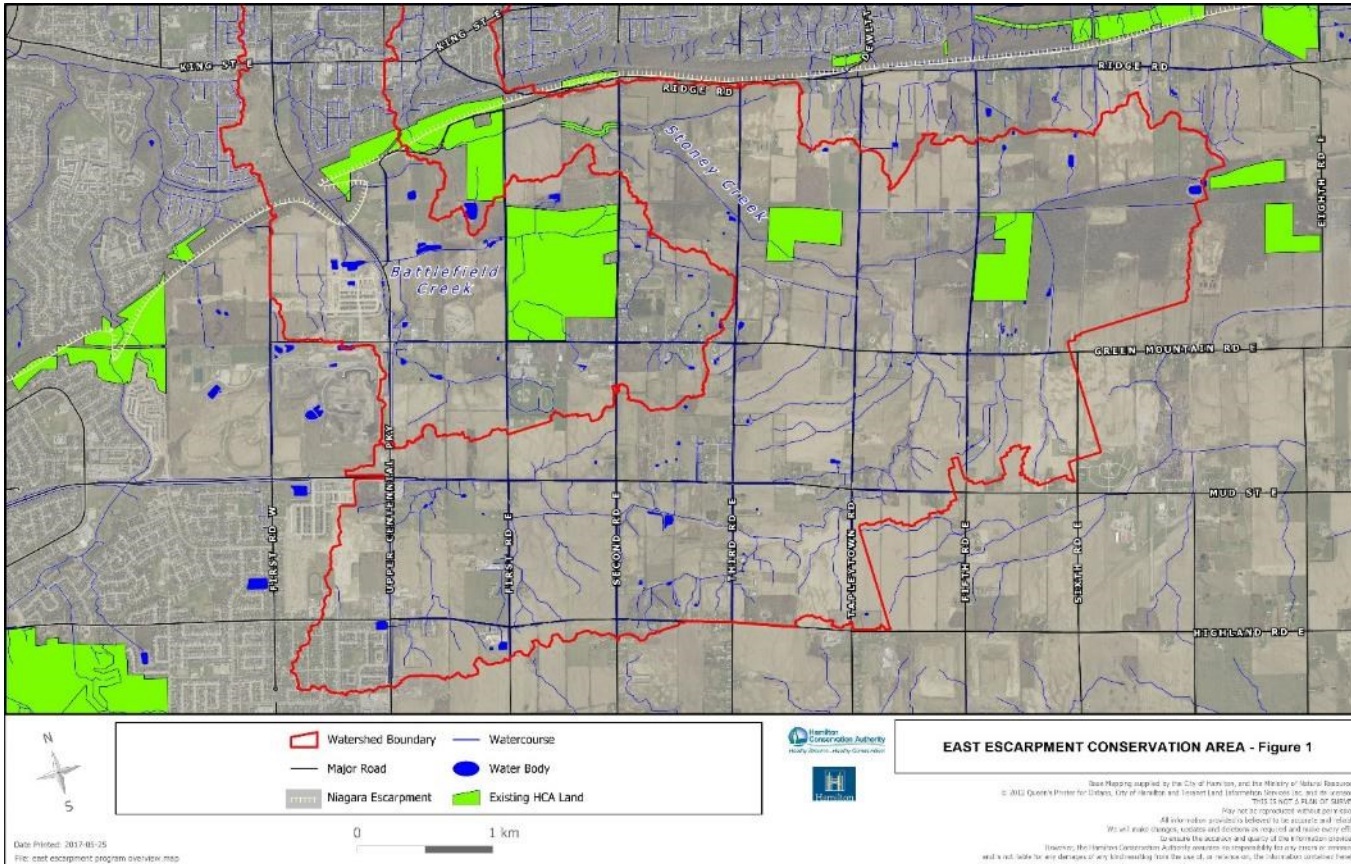
# Saltfleet Conservation Area - East Escarpment Wetland Restoration Project

## Natural Hazard Attenuation/Natural Heritage Conservation and Restoration

- Completion of Environmental Assessment February 2018. Additional design work required based on preferred option and additional land acquisition to implement flooding and low flow augmentation mitigation and conservation and restoration works

Scenario	Storm Event 2 Year	Storm Event 5 Year	Storm Event 10 Year	Storm Event 25 Year	Storm Event 50 Year	Storm Event 100 Year	Storm Event Regional
Existing - Property	1	14	33	62	78	102	194
With Wetlands	0	9	19	38	41	52	194
Removed - Property	1	5	14	24	37	<b>50</b>	0
Existing - Buildings	0	2	2	7	11	46	116
With Wetlands	0	1	2	2	2	10	116
Removed - Building	0	1	0	5	9	<b>36</b>	0

# Saltfleet Conservation Area East Escarpment Wetland Restoration Project



- To date, 245 acres of land have been purchased for this project in the study area.
- Funding has been made available from the Heritage Green Community Trust, the City of Hamilton, the Hamilton Conservation Authority and the Hamilton Conservation Foundation



Hamilton Region Conservation Authority

2018 Budget Details

As approved by HCA Board of Directors November 2, 2017

## Goals

- 1) Support Conservation Authorities Act mandate
- 2) Operate on a cash neutral/positive basis
- 3) Require no greater levy increase than Council approved

# Support Conservation Authority Mandate

## HCA VISION

- HCA works to ensure healthy streams and healthy communities in which human needs are met in balance with the needs of the natural environment, now and in the future

## HCA MISSION

- To lead in the conservation and sustainable management of our watershed's natural environment

## HCA STRATEGIC PLAN

- Tailor activities to comply, support and / or accomplish one or more of the five strategic goals as defined by the approved Strategic Plan 2014 – 2018



# Operate on a cash neutral / positive basis

## Revenues are a combination of:

- Self generated commercial sales
- Corporate and individual donations and grants
- Federal and provincial grants
- Municipal special project grants
- Municipal levy
- 2018 \$12.7million

## Expenses are a combination of:

- Salaries, wages and staff expenses
- Fleet operation, repair and maintenance
- Facility operating costs including utilities
- Third party contracting and consulting services
- Marketing and promotion
- 2018 \$12.5million

## Repayment of loan principal

- Repayment of loans for Canal Park and wind up of Defined Benefit pension plan
- 2018 \$0.2million

# Require no greater levy increase than Hamilton Council guidelines provide

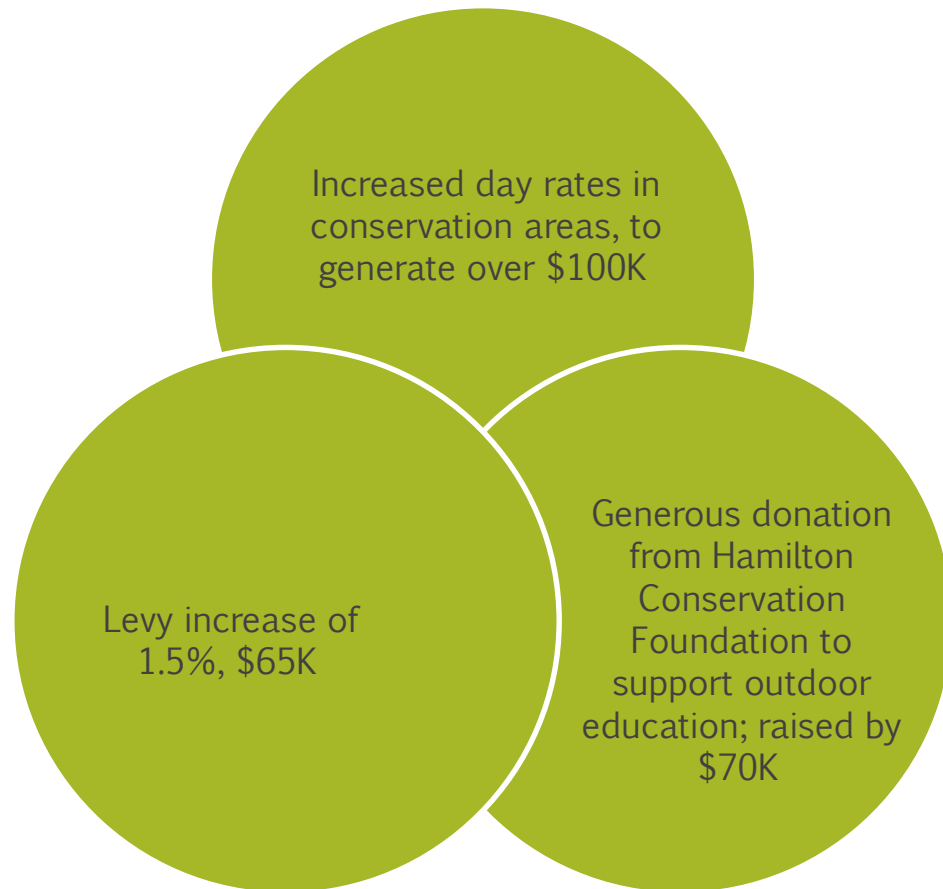
- This year's levy increase is less than last year
  - Recommended increase of 1.5%, last year was 1.8%
  - Translates to \$ 65,000 increase
- Total levy required this year is \$ 4,391,876
  - City of Hamilton share is 99.7%, \$ 4,378,676
  - Township of Puslinch share is 0.3%, \$ 13,200

## Levy Use

Division	2017	2018	\$ Change
Westfield Village	573,200	581,800	8,600
WP&E	1,158,500	1,187,600	29,100
Corporate Support	2,595,300	2,622,600	27,300
Total	\$4,327,000	\$4,392,000	\$65,000

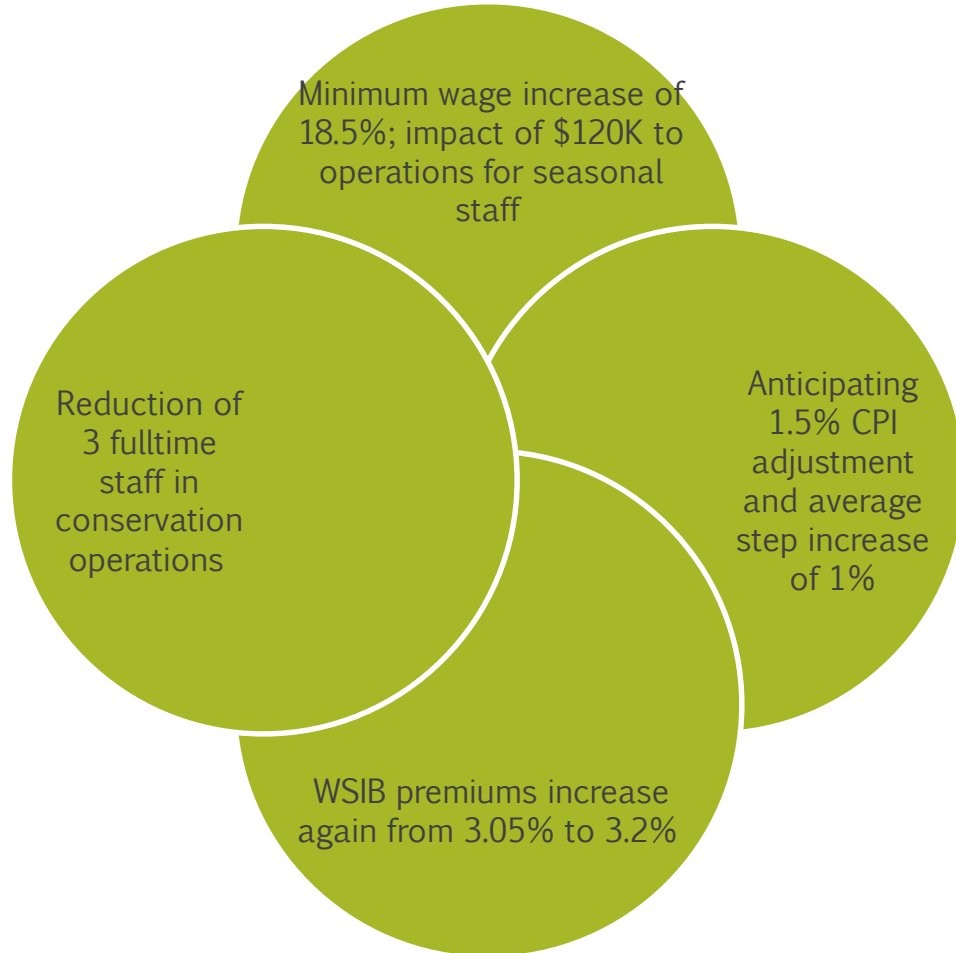


# Revenue Highlights



	<u>2017</u>	<u>2018</u>
City Levy	\$ 4,327	\$ 4,392
Admissions	1,925	2,037
Marina	1,329	1,352
Equipment	1,180	1,180
Camping	922	983
Fees	693	710
Other	<u>1,946</u>	<u>2,047</u>
	12,322	12,701

# Expense Highlights



	<u>2017</u>	<u>2018</u>
Staff	\$ 7,672	\$ 7,731
Equipment	1,207	1,257
Materials	489	494
Fees	318	487
Other	<u>2,440</u>	<u>2,529</u>
	12,126	12,498
Loan	<u>196</u>	<u>203</u>
	12,322	12,701

# Fleet Complement

Light vehicles - pickup trucks, etc. 34

- Average age is 2008
- Replacement based on:
  - Repair costs
  - Age + - 10 years
  - Mileage + - 200,000 km
  - Hours – vehicle dependent

Tractors/loaders/backhoe 23

Heavy equipment

- Dozer Boat Lift                      Septic Pumper truck      Tandem Dump truck
- Flatbed crane 12 ton Dump truck

Boats 5

# Watershed Planning & Engineering Detail

- Fulltime staff of 16
- Four primary activities
  - Regulations, permitting, water quality oversight, policy administration
  - Flood forecasting & flood control
  - Stewardship
  - Project work
- Flood control facilities
  - Valens Lake dam: Height 20.7 ft; length 400 ft;
  - Maximum storage area – 270 acres; Maximum storage capacity - 1,650 acre-ft
  - Christie Lake dam: Height 30 ft; length 600 ft;
  - Max Storage area – 400 acres; Maximum storage capacity - 1,850 acre-ft



# Conservation Area Details

- Fulltime staff of 21
- Properties owned and managed:
  - 14 Niagara Escarpment properties, 25 waterfalls, an award-winning marina, two recreational lakes, 145 kilometres of park and rail trails, 12 significant wetlands, an ecological preserve and an 18,000 year old muskeg bog.
- Six major operating divisions:
  - Fifty Point; Valens Lake; Christie Lake including Spencer Gorge; Dundas Valley; Hamilton Mountain including Eramosa Karst and Saltfleet
- Self generated revenue, in total, sufficient to cover expenses

# Westfield Heritage Village

- Fulltime staff of 5
- Strong volunteer support with over 270 active members
- Significant land expansion in recent years
  - Master Plan style exercise to be conducted to see how to best utilize new lands to the benefit of visitors
- Special events, school programming and film shoots are key revenue producers

# Corporate Services

- Fulltime staff of 39
- Includes:
  - General administration; Finance; Marketing; Human Resources; Outdoor Education; Foundation Administration; Capital Design; Fleet; Forestry; Construction; Trades
- Land acquisition donations and purchase costs flow through Corporate operating accounts before being moved to the balance sheet
- The majority of construction crew, trades and forestry wages are charged to the specific jobs with the non-tool/non-project time remaining here

# Loan Payments

## Remaining loans :

- **1) 2018 Veldhuis (Canal Park) loan**
- 44K principal payment, \$0 interest
- 2010 - Original terms- Loan of \$440 thousand @ 0.0% interest, 10 year term
- final payment March 31<sup>st</sup>, 2020
  
- **2) 2018 DB Pension Deficit loan:**
- \$ 159K principal payment, \$28K interest
- 2011 - Original terms- Loan of \$ 1.5 million @ 4.25% interest, 10 year term
- final payment June 30<sup>th</sup>, 2021



# Confederation Beach Park

- Owned by the City of Hamilton, managed by the HCA
- Management agreement expired December 31<sup>st</sup>, 2016;
- New agreement now in place: term of 10 years plus two 5 yr. renewals
- Only monetary impact to HCA is the management fee, calculated as a percentage of expenses, approximately \$400K per year
- The 2017 was average in WWW attendance; 2015 and 2016 were the best in recent history but success brings other issues
- Significant money pledged by the City to expand the attractiveness of CBP starting with the new name, wayfinding signage and east end sports park
- Money has been pledged by the City for feasibility study of the waterpark which needs upgrading; also conducting a facilities review of whole park

# Confederation Beach Park Budget Considerations

- Minimum wage increase is the single largest impact to costs
- Weather has single largest impact to revenues, validating conservative use of 100,000 attendance as base
- Competition may have additional impact in 2018; soft start to Wet n' Wild in Brampton
- Only revenue source for material change is WWW admissions
- Leases all recently updated
- Film industry highly variable

# Wild Water Works Revenues

- Increases to general admissions set at 15%
  - Adult general day pass will be \$26.36 plus HST
    - (an increase of \$3.44)
  - Competitors' prices
    - Wet N 'W (Toronto)               \$39.95
    - Calypso (Ottawa) \$49.99
    - Bingeman (Kitchener)       \$27.95
  
    - Fallsvue (Niagara Falls)   \$44.95

## Wild Water Works Costs

- Minimum wage increase of 18.5%
  - WWW employs 143 casual staff, Park 17
  - Impacts of \$150K and \$20K, respectively
  - Plus 17% MERC – another \$30K
- All other costs subject to CPI

# 2018 Confederation Beach Park Budget

	Passive Park		Commercial Ops	
	<u>2017</u>	<u>2018</u>	<u>2017</u>	<u>2018</u>
<u>Revenues</u>				
Operations	\$ 56	\$ 63	\$ 1,853	\$ 2,088
Rentals	95	112	151	164
City cont'n	650	670	-	-
3rd Party	-	-	356	372
	<u>801</u>	<u>845</u>	<u>2,360</u>	<u>2,624</u>
<u>Expenses</u>				
Operations	673	716	1,710	2,005
Marketing	-	-	204	183
Insurance	24	22	138	134
Mgmt Fees	<u>104</u>	<u>107</u>	<u>308</u>	<u>302</u>
	<u>801</u>	<u>845</u>	<u>2,360</u>	<u>2,624</u>
Net	<u>-</u>	<u>-</u>	<u>-</u>	<u>-</u>



# Thank You

