



Figure 1: View of the subject property, facing northwest, from Garner Road East. Note the small parcel size and the soil disturbance on adjacent lands as part of ongoing construction activities (Parsons, 2018).



Figure 2: View of the subject property, facing northeast. Note the curvilinear driveway pattern which has been in place for many years (Google Streetview, 2017).



Figure 3: A closer image of the subject property. Note the location of the westerly chimney (the easterly chimney was removed sometime after 1982). The prominent, pedimented modern portico was modeled after a previous portico which was replaced sometime after 1982 (Paul Dolanjski, 2009).



Figure 4: North-facing image of the subject property (Parsons, 2018).



Figure 5: A closer image of the Lampman House's limestone masonry, comprising walls of rubble or fieldstone and cut sandstone quoin blocks (Parsons, 2018).



Figure 6: The modern cross-gabled two-car garage northeast of the existing dwelling (Parsons, 2018).



Figure 7: The earliest known photograph of the Lampman House. The family shown in the photograph may be John Lampman's widow and grandchildren. Note the lack of a gabled portico and the simple, symmetrical proportions. Courtesy of Harold Lampman (Ancaster Township Historical Society, *Ancaster: A Pictorial History*, 2001).



Figure 8: Members of the Lampman family in front of the remains of a log house, likely the original Matthias Lampman log home. Courtesy of Harold Lampman (ATHS, *Ancaster: A Pictorial History*, 2001).

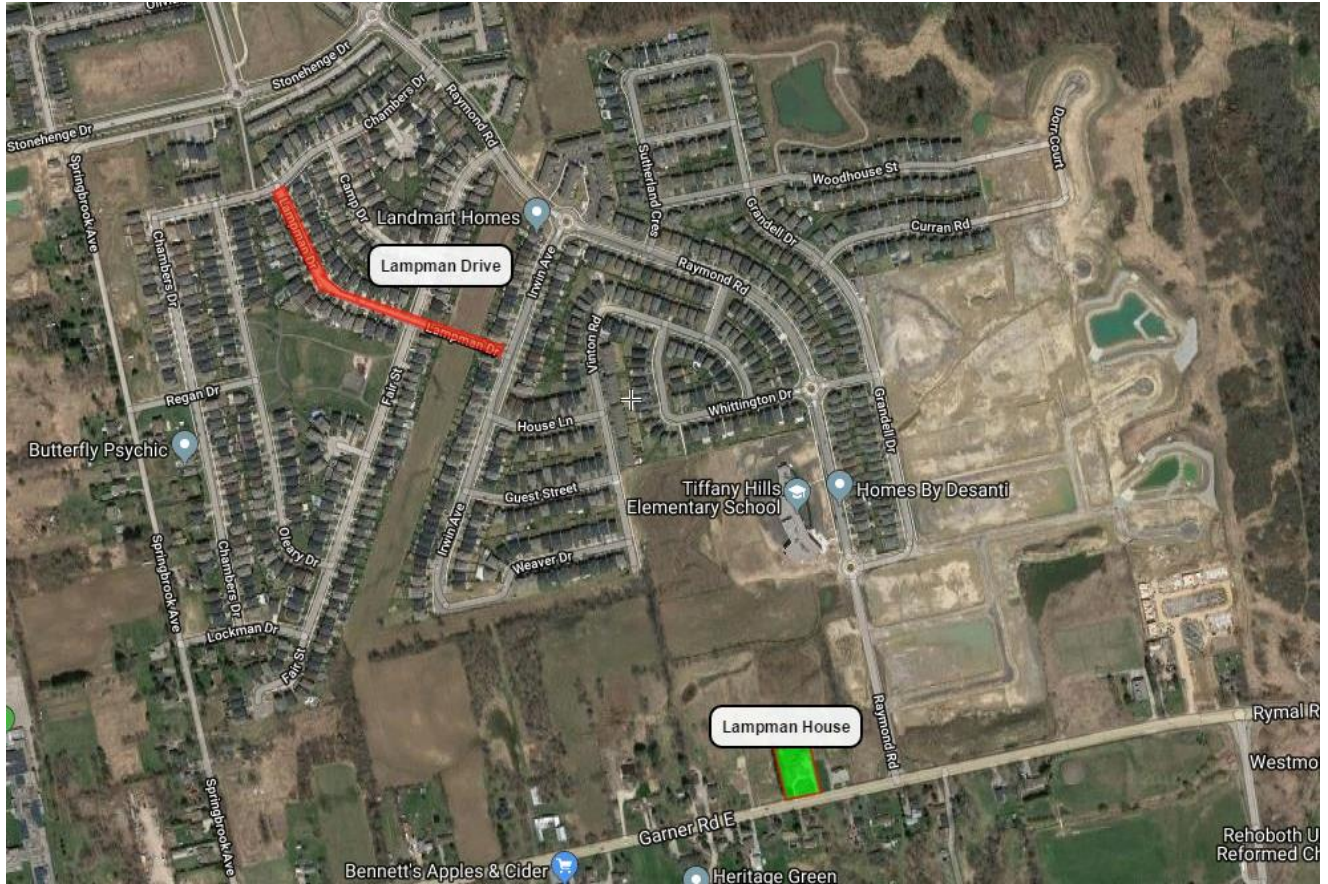



Figure 9: Map showing the location of newly-created Lampman Drive, northwest of the Lampman House (Google Maps).


Garner Town Estates Floor Plans



The Rousseau

These gorgeous town homes take their name from a great example of Victorian architecture, the Rousseau Hotel, built in 1832.

[ROUSSEAU FLOOR PLANS](#)



The Tisdale

These stunning freehold town homes are named after the oldest building in Ancaster, the Tisdale House, built in 1806.

[TISDALE FLOOR PLANS](#)

Figure 10: Promotional material produced by A. DeSantis Developments Ltd. for the Garner Town Estates subdivision located adjacent to the subject property. Note the pastiche townhouse designs and the naming of styles after early Ancaster settlers (www.desantis.com).



THE ROUSSEAU TOWNS THE ROUSSEAU STREET TOWNS THE TISDALE URBAN TOWNS

D. SANTIS
DEVELOPMENTS LTD.
www.desantis.com

Site plan is an artist concept and subject to change without notice. E. & O.E.

Figure 11: Promotional site plan for the Garner Town Estates subdivision. Note the capitalization made on the Lampman House, denoted by a historic plaque emblem (www.desantis.com).