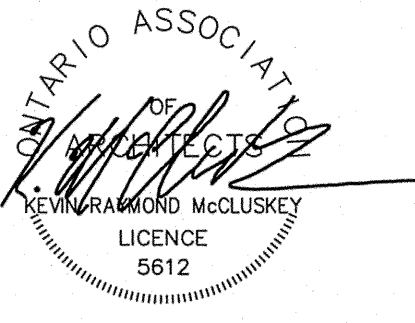




Pearce McCuskey Architects
2203 Durwin Drive • Mississauga, Ontario • L5L 1X2
www.pmcarchitects.ca 1.905.607.2444



This drawing is not to be used for construction unless signed by partner in charge.
Contractors must verify all dimensions and be responsible for same, report any discrepancies to the architect before commencing the work.
Prints are not to be scaled.
All drawings and related documents are the sole copyright property of the architects and must be returned upon request. Any reproduction of drawings and related documents in part or in whole is forbidden without the architects written permission.

detail number key to details
sheet number

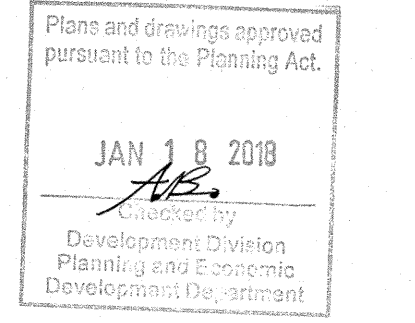


OWNER:
The Green Organic Dutchman
1915 Jerseyville Road, West
Ancaster | Ontario | L9R 1R0



CONSTRUCTION MANAGER:
Lectocor Construction Limited
3930 Nashua Drive
Mississauga | Ontario | L4V 1M5

CITY OF HAMILTON FILE NUMBER:
DAR-17-082



ISSUED FOR SPA FINAL 01DEC17
ISSUED FOR PERMIT 16SEP17
BUILDING TENDER 01SEP17
PRE-ENG BLDG TENDER 20JUL17
OWNER REVIEW ISSUE 30JUNE17

The Green Organic Dutchman
New Facilities
1915 Jerseyville Road, West
Ancaster, Ontario

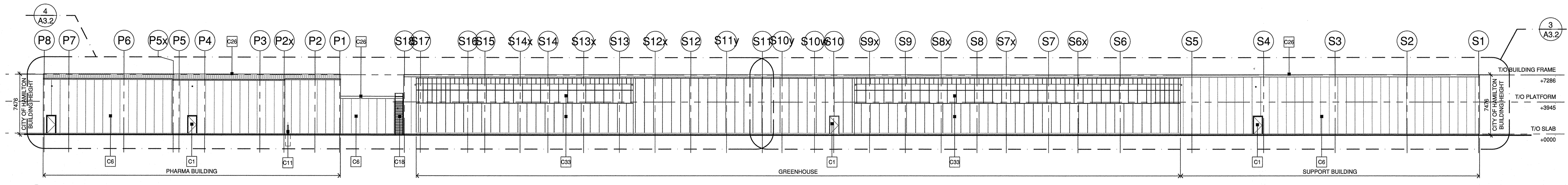
Overall Building Elevations

Project Number:
17025

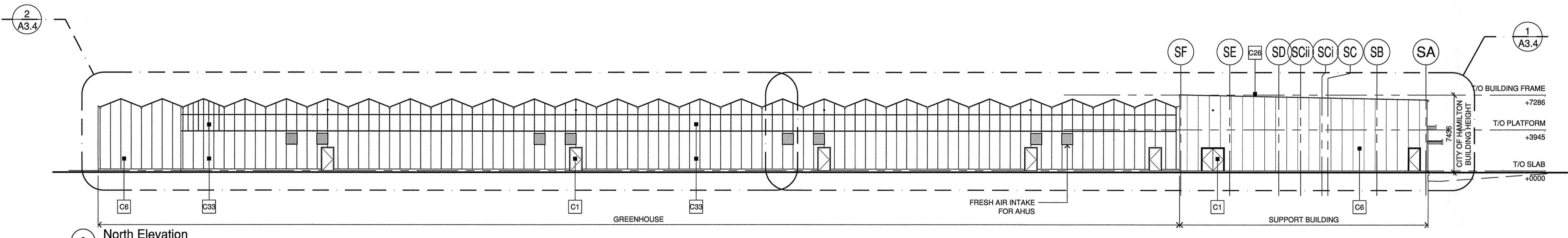
Drawn By: dmk/JP
Checked By: dmk
Date: JUNE 2017
Scale: 1:250
Sheet Number:

A3.0

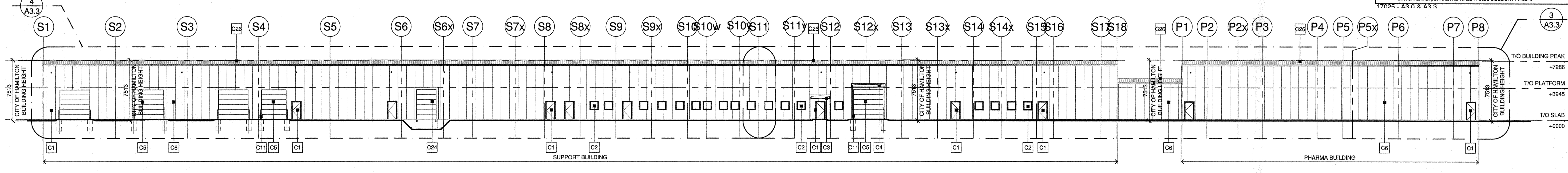
RECEIVED
JAN 16 2018



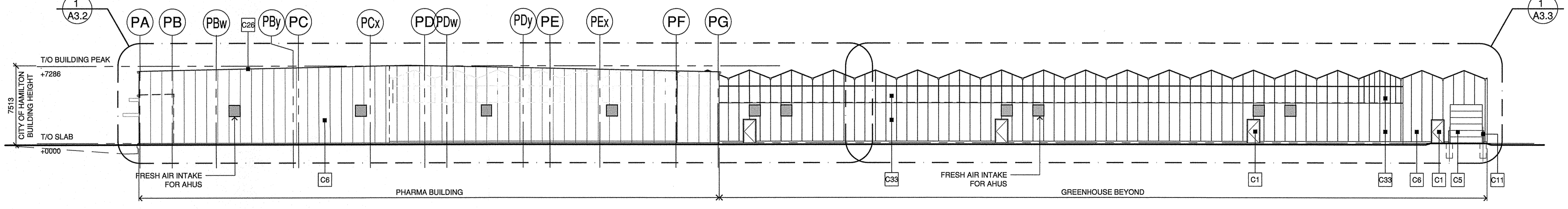
4 East Elevation
SCALE 1:250



3 North Elevation
SCALE 1:250



2 West Elevation
SCALE 1:250



1 South Elevation
SCALE 1:250

MATERIAL / COLOUR SCHEDULE	
C1	DOORS / FRAMES - TYPE: INSULATED HOLLOW METAL FINISH: PAINT COLOUR: WHITE BY:
C2	STOREFRONT FRAMES - TYPE: PRE-FINISHED THERMALLY BROKEN ALUMINUM STOREFRONT FRAMES WITH MIFRAME MOUNTED SEALED, TINTED VISION UNITS FINISH: CLEAR ANODIZED
C3	CANOPY - OUTLINE OF HORIZONTALLY CANOPY OVER MAIN ENTRANCE PROJECTING 1325 FROM BUILDING FACE COLOUR: WHITE
C4	CANOPY - OUTLINE OF HORIZONTALLY CANOPY OVER OVERHEAD DOORS PROJECTING 725 FROM BUILDING FACE COLOUR: WHITE
C5	OVERHEAD SECTIONAL DOORS - TYPE: PRE-FINISHED INSULATED (P8) SIZE: AS PER DRAWING COLOUR: WHITE
C6	METAL PANELS EXTERIOR WALL - TYPE: PRE-FINISHED INSULATED WALL SYSTEM WITH POLYISOCYANURATE INSULATION (P30) COLOUR: WHITE
C11	BOLLARDS - TYPE: CONCRETE FILLED 1500 STEEL PIPE BOLLARDS FINISH: PAINT COLOUR: SAFETY YELLOW BY:
C14	STEEL TRENDS - TYPE: OPEN GRATE STEEL TRENDS ON STEEL CHANNEL STRINGER (C310 x 31) WITH: 400 STEEL TUBE GUARD HANDRAIL ON 400 STEEL TUBE SUPPORTS AT 1000 O/C ALL GALVANIZED FINISH SHOP APPLIED STAIR #3 (EXTERIOR)
C24	DOCK LEVEL - TYPE: PRE-FINISHED INSULATED (P8) OVERHEAD DOCK LEVEL DOOR WITH 100MM POURED CONCRETE DOCK PROJECTION NEOPRENE FACED DOCK SEALS AND RUBBER DOCK BUMPERS
C28	SEAM ROOF - TYPE: PRE-FINISHED METAL STANDING SEAM ROOF COLOUR: WHITE
C33	GREEN HOUSE EXTERIOR WALL - POLYCARBONATE VISION PANELS IN PRE-FINISHED ALUMINUM GREENHOUSE WINDOW FRAMES ABOVE PRE-FINISHED INSULATED METAL PANEL SYSTEM
	METAL PANELS - SEE [C6] ABOVE
	POLYCARBONATE PANELS - CLEAR
	GREENHOUSE FRAMES - CLEAR

*TYPICAL - ALL DOWNSPOUTS, SOFFITS, FASCIA AND TRIM TO
MATCH EXTERIOR METAL WALL PANEL COLOUR / FINISH.
1770R - 2x 11 x 2x 3

CITY OF HAMILTON BUILDING HEIGHT
DETERMINED USING THE AVERAGE LEVEL OF
THE PROPOSED OR FINISHED GROUND ALONG
THE PERIMETER OF ALL EXTERIOR WALLS TO
THE UPPERMOST POINT OF THE BUILDING.

REFER TO SHEET A0.1 FOR NOTES,
LEGENDS AND SCHEDULES

