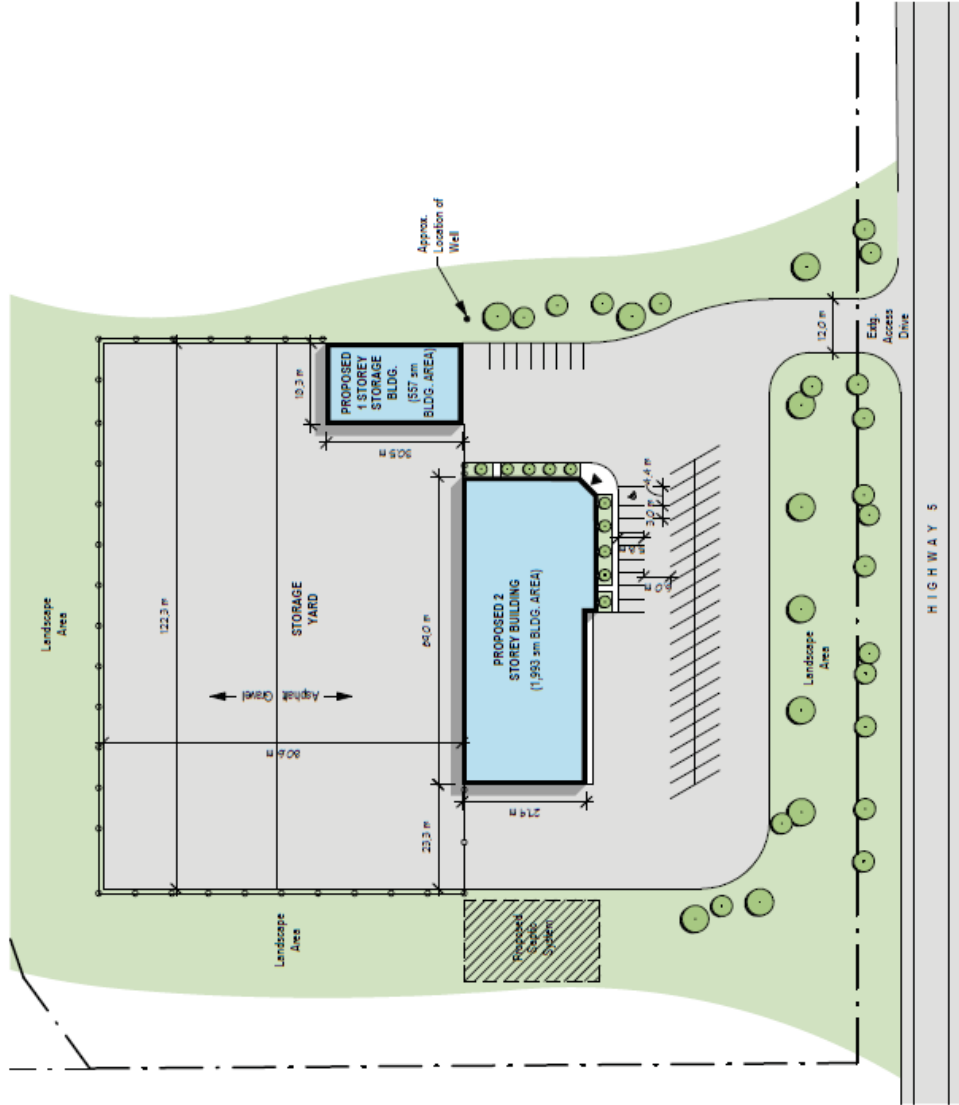




Building Area

Main Building	
Ground Floor	21,456 sf (1,993.3 sm)
Second Floor	7,240 sf (672.6sm)
Total GFA	28,696 sf (2,665.9 sm)
Storage Building	6,000 sf (557 sm)
Site Area	11.07 ha
Total Property Area	40.40 ha



DETAILED DEVELOPMENT PLAN

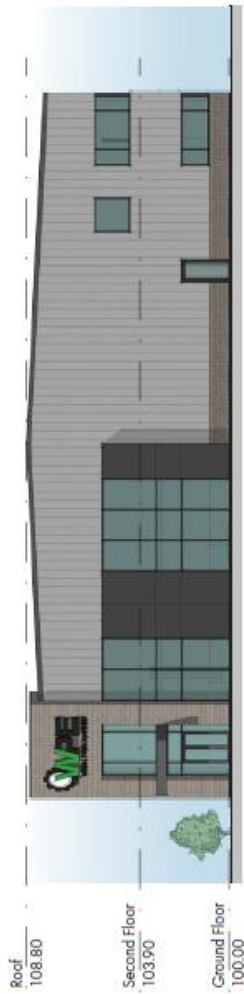
Scale 1:1000

NEW FACILITY FOR WPE
119 Highway 5, Dundas, ON
July 9, 2018



PERSPECTIVE VIEW

NEW FACILITY FOR WPE
119 Highway 5, Dundas, ON
March 7, 2018



EAST ELEVATION

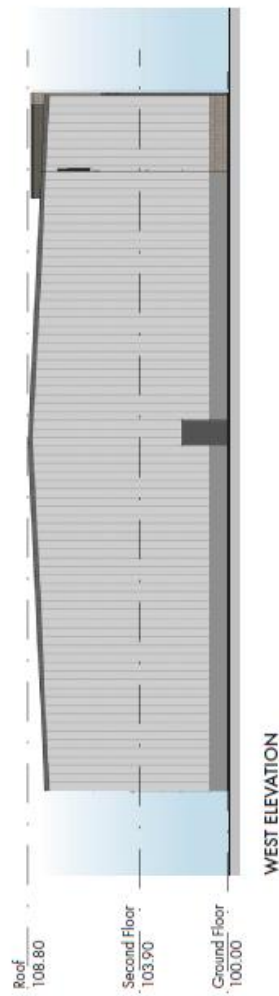
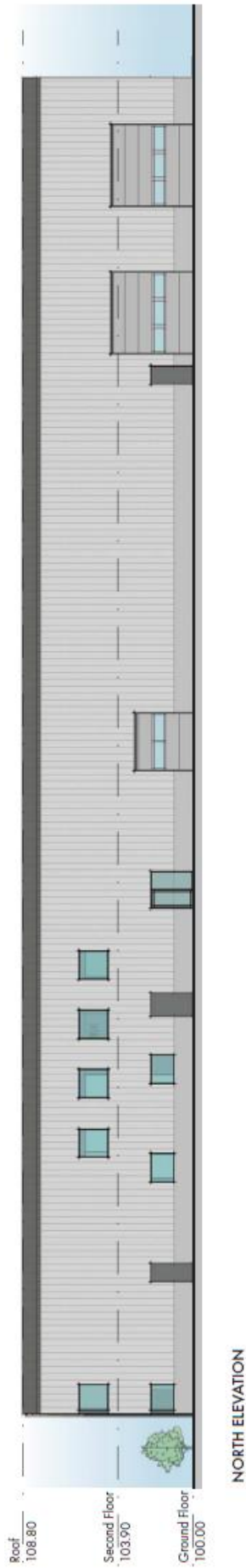


SOUTH ELEVATION

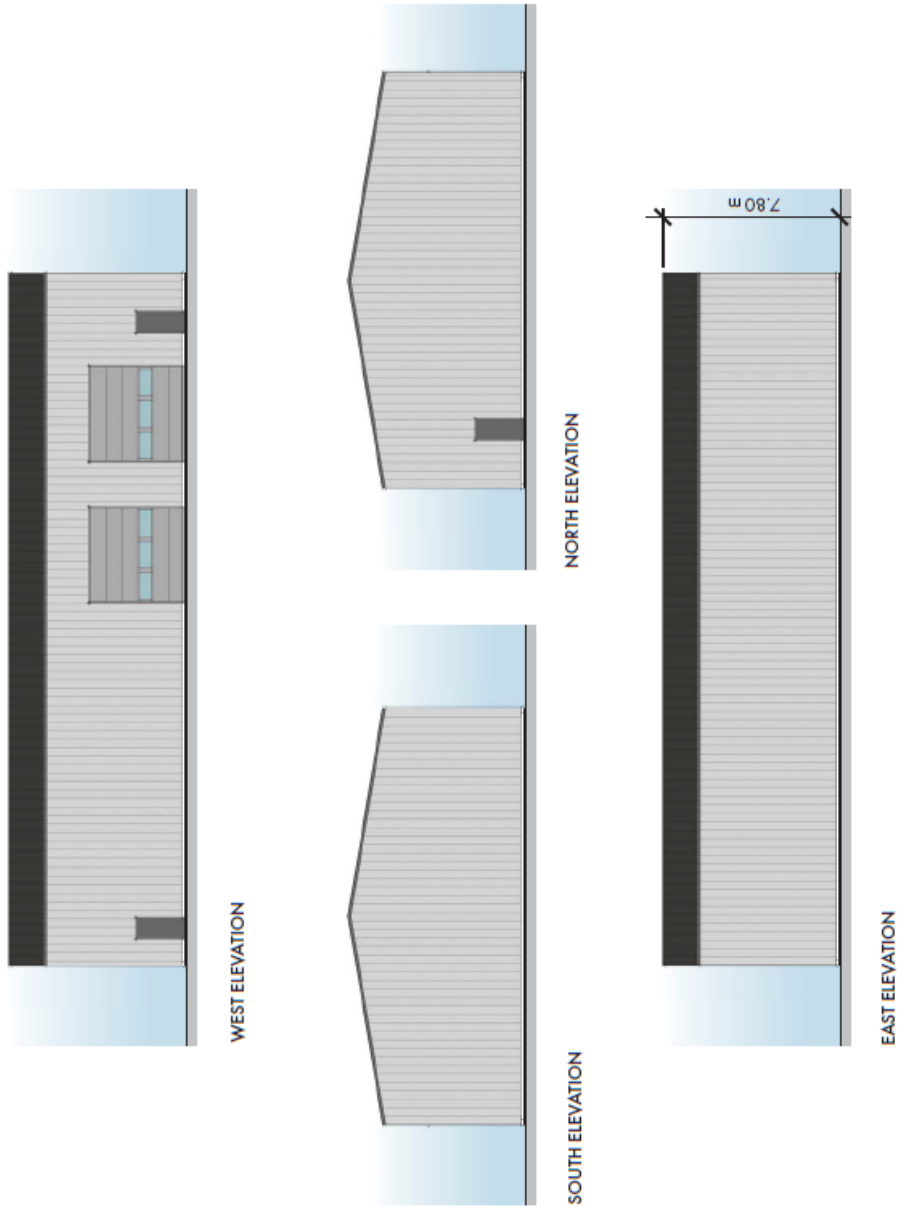
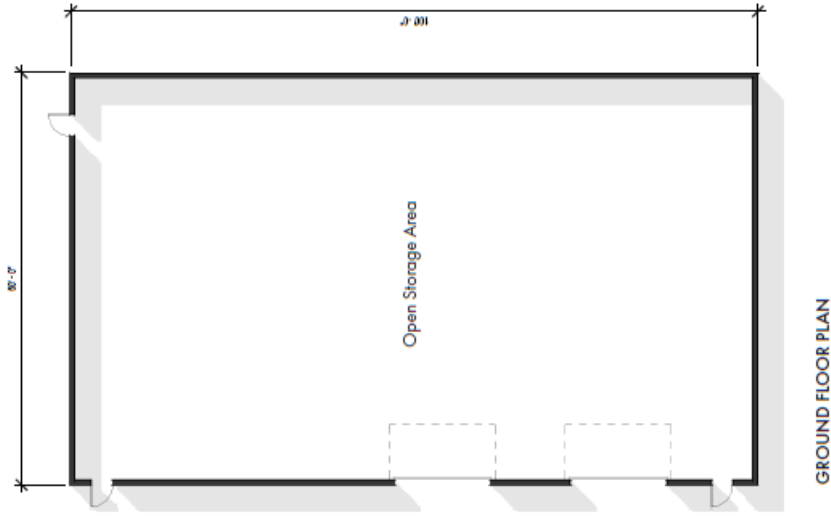
ELEVATIONS

Scale 1:200

NEW FACILITY FOR WPE
119 Highway 5, Dundas, ON
March 7, 2018



ELEVATIONS
Scale 1:200
NEW FACILITY FOR WPE
119 Highway 5, Dundas, ON
March 7, 2018



STORAGE BUILDING PLAN & ELEVATIONS

Scale 1:200
NEW FACILITY FOR WPE
119 Highway 5, Dundas, ON
March 7, 2018