

HAMILTON CONSERVATION AUTHORITY BUDGET PRESENTATION CITY OF HAMILTON

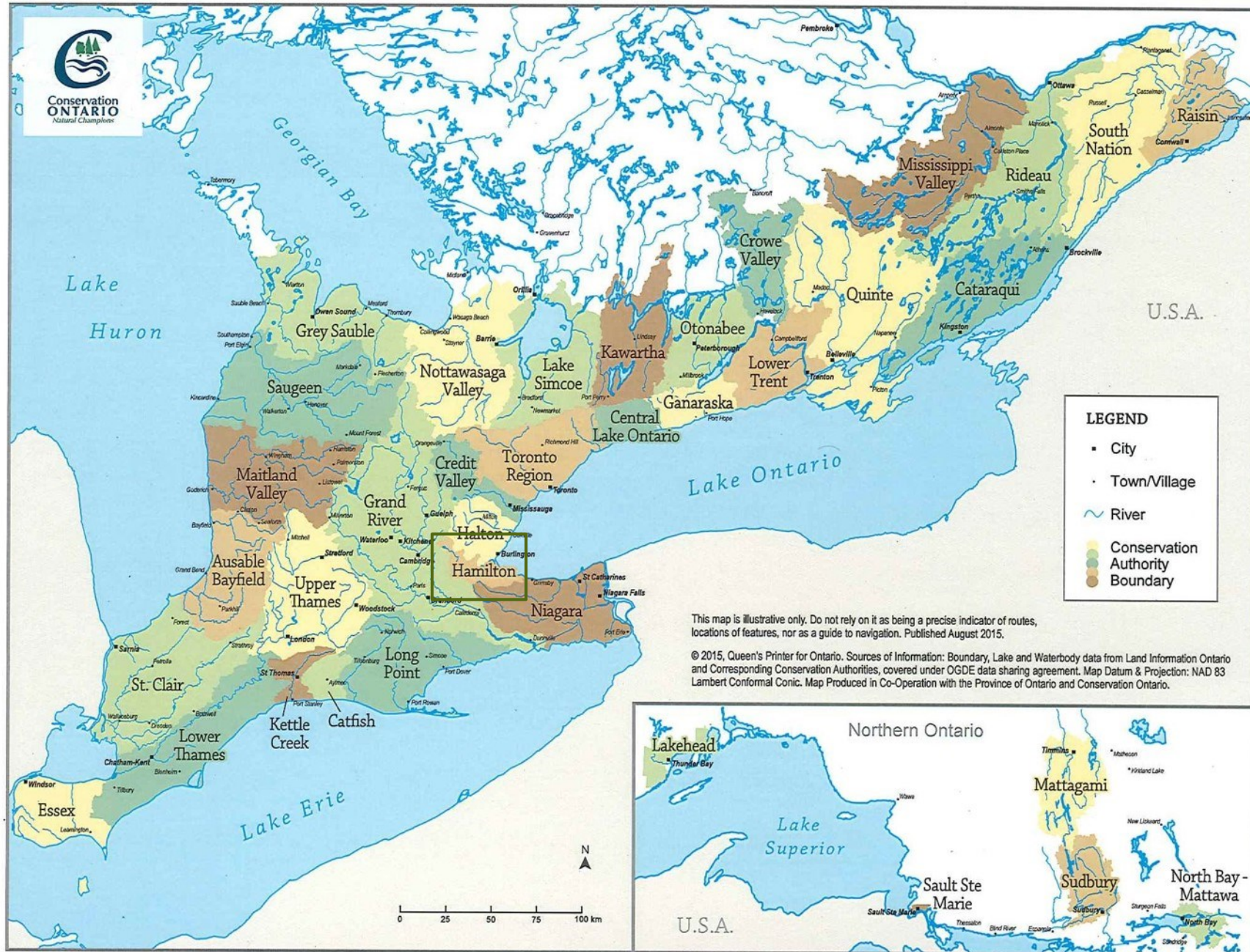


January 22, 2019





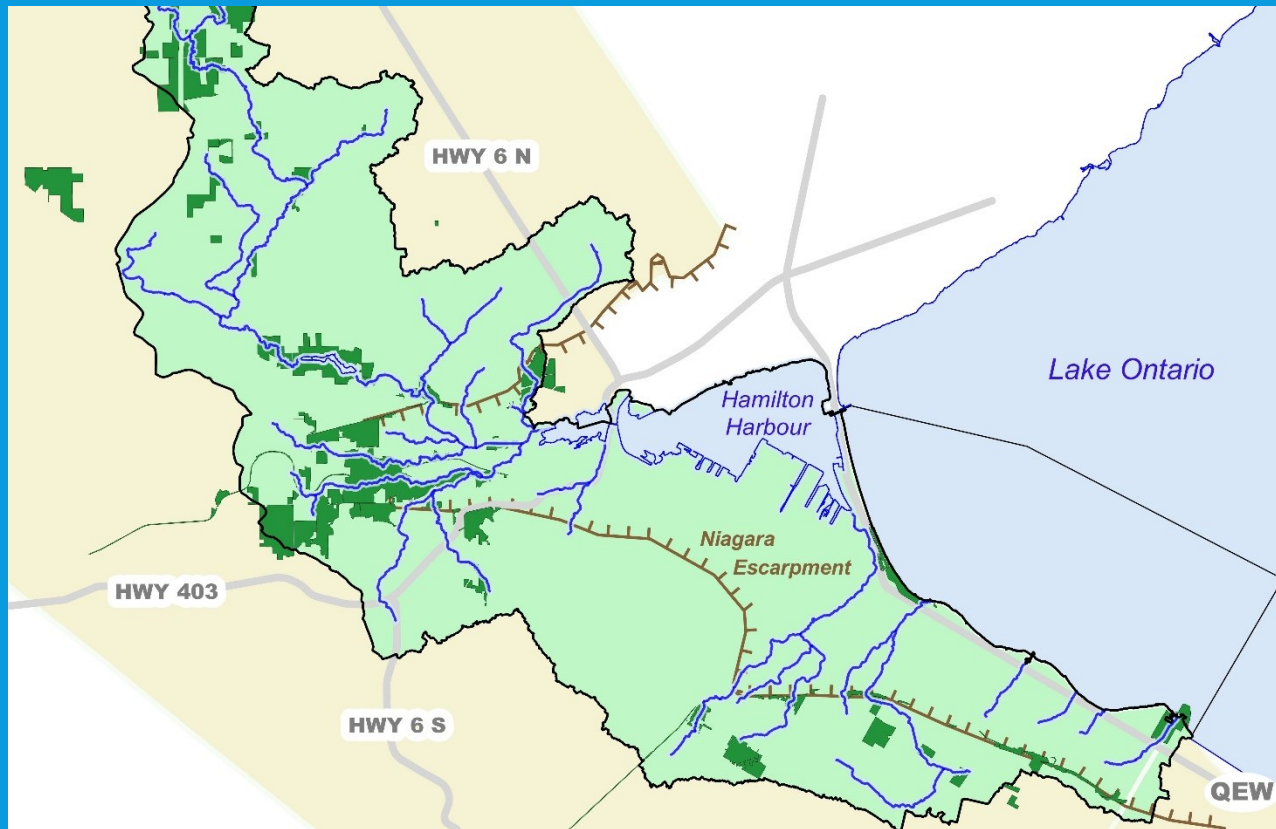
Conservation
ONTARIO
Natural Champions



This map is illustrative only. Do not rely on it as being a precise indicator of routes, locations of features, nor as a guide to navigation. Published August 2015.

© 2015, Queen's Printer for Ontario. Sources of Information: Boundary, Lake and Waterbody data from Land Information Ontario and Corresponding Conservation Authorities, covered under OGDE data sharing agreement. Map Datum & Projection: NAD 83 Lambert Conformal Conic. Map Produced in Co-Operation with the Province of Ontario and Conservation Ontario.

HCA WATERSHED



- 2 member municipalities: City of Hamilton and Township of Puslinch
- Our creeks flow into Hamilton Harbour and Lake Ontario
- Spencer, Borer's, Chedoke and Red Hill to the Harbour
- Battlefield, Stoney and numbered watercourses to Lake Ontario

HCA LANDHOLDINGS

- Major land owner within our watershed area owning/managing 4,484 hectares (11,079 acres) of land which represents 10% of our watershed



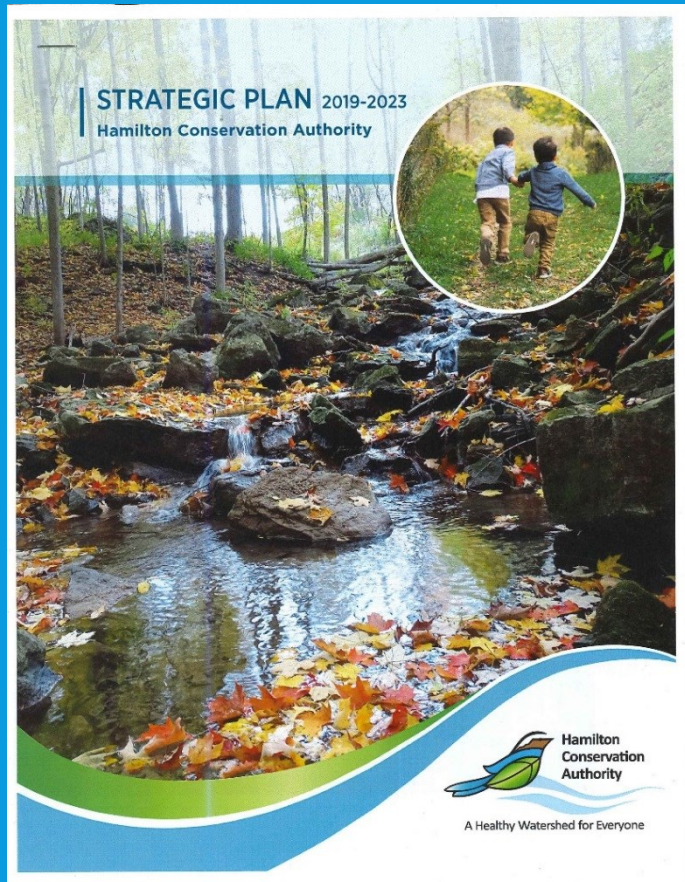
- These lands are locally, provincially and in some cases, internationally significant and include features such as forests, prairie, wetlands, watercourses, karst, Lake Ontario shoreline and the Niagara Escarpment

RECREATION OPPORTUNITIES

- Wide range of recreation for residents of Hamilton and beyond
 - 6 major conservation areas
 - extensive recreational trails with “crown jewel” of Dundas Valley
 - 300 camp sites
 - waterfalls
 - 2 recreational lakes for swimming areas
 - boat rental & fishing
 - 340 slip marina
 - historical village
- Recreation is a key contributor to our self generated revenues



NEW HCA STRATEGIC PLAN



Vision

- A Healthy Watershed for Everyone

Mission

- To lead in the conservation of our watershed and connect people to nature

HCA STRATEGIC PLAN PRIORITY AREAS



Education & Environmental Awareness



Organizational Excellence



Natural Heritage Conservation



Conservation Area Experience

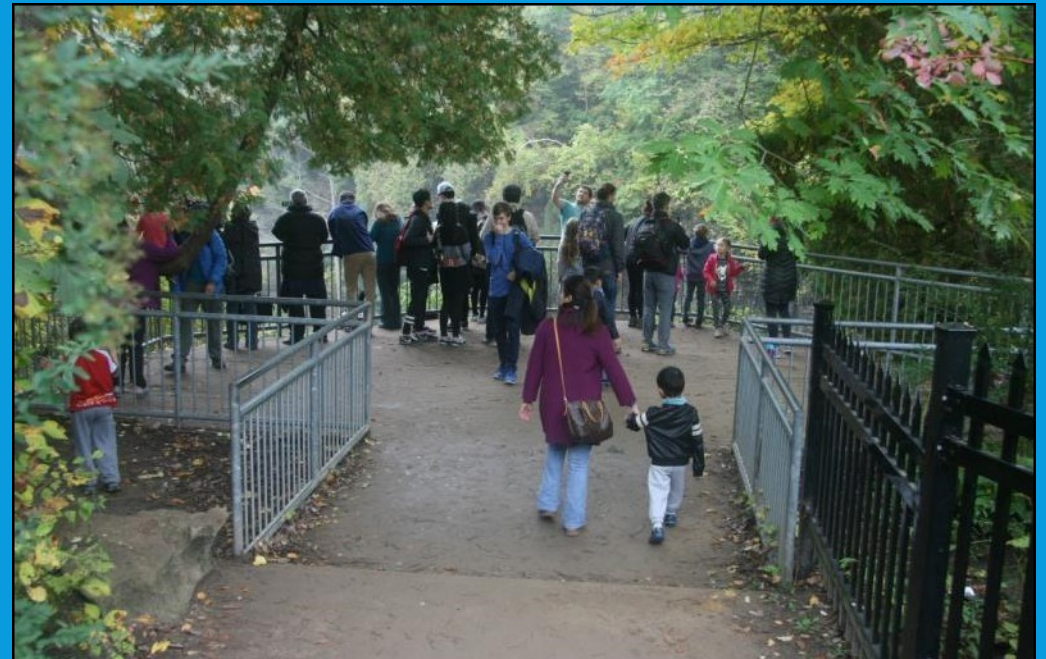


Water Management

HAMILTON WATERFALLS



- Popularity and promotion through social media in the GTHA continues
- Keeping visitors safe is a priority

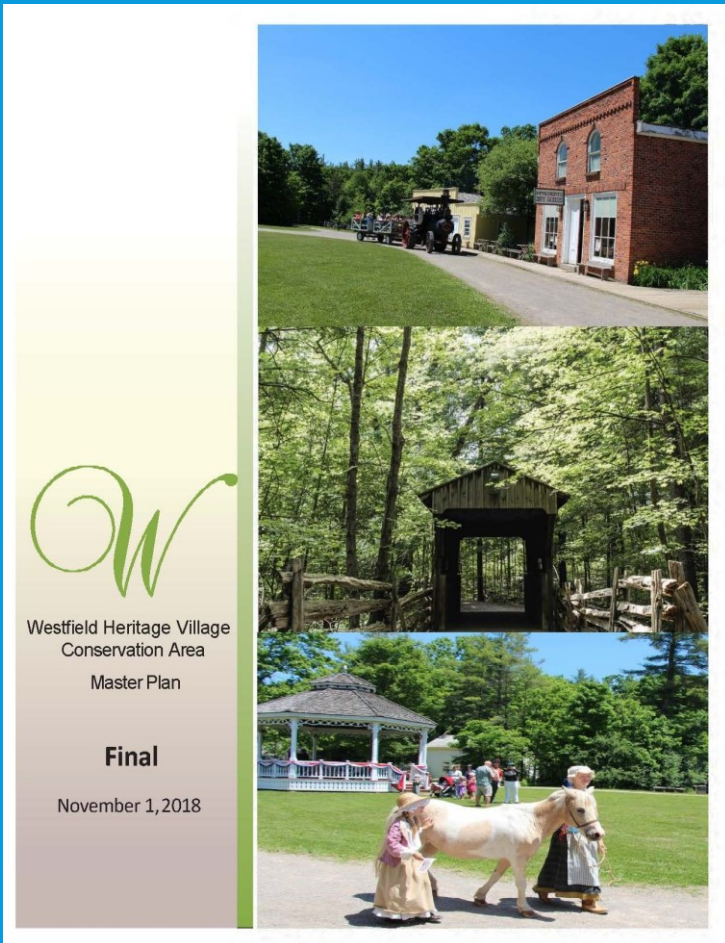


SHUTTLE BUS SERVICE FOR SPENCER GORGE



- Shuttle hub moved to Christie Lake Conservation Area
- Operated weekends and public holidays from May until end of October
- Over 16,000 cars parked offsite, roughly 48,000 visitors utilized the shuttle
- Partnership and collaboration with municipal bylaw, enforcement and Hamilton police is key

MASTER PLANNING



- Master planning over the next decade will provide updated guiding documents for all areas
- Westfield was completed in 2018
- With the acquisition of an additional 144 acres of natural areas acquired since 2015, Westfield Heritage Village will evolve to become a Conservation Area

LOWER SPENCER FISH HABITAT IMPROVEMENT PROJECT



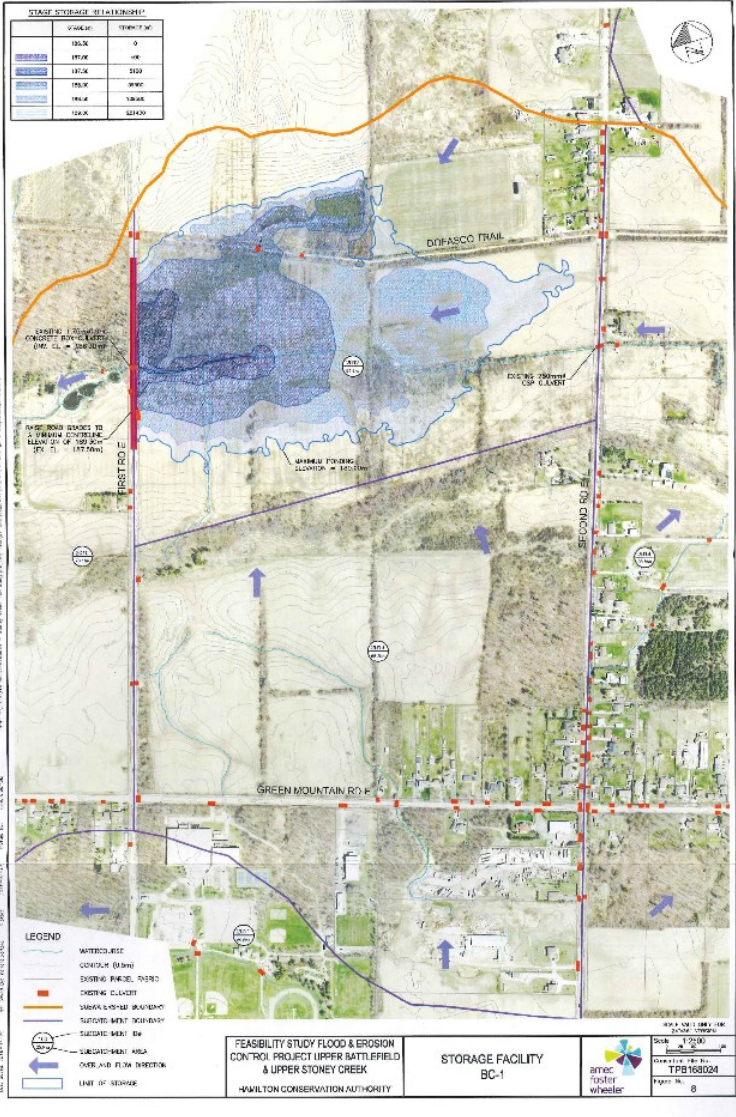
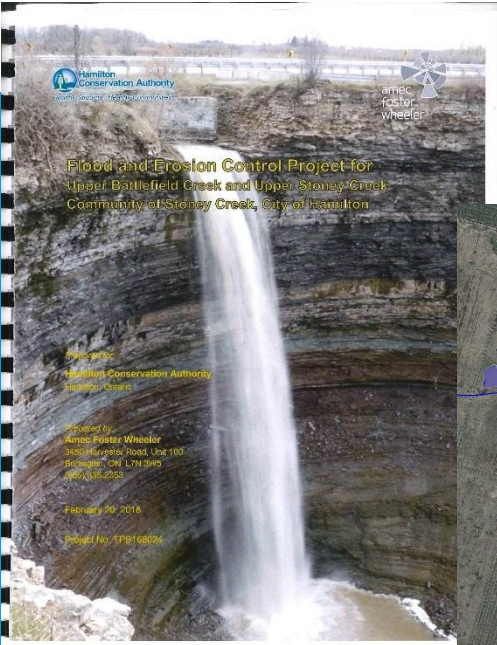
BUILD IT.....AND THEY WILL COME



GYPSY MOTH SPRAY



SALTFLEET CONSERVATION AREA WETLAND RESTORATION ENVIRONMENTAL ASSESSMENT



PLANTING PROJECTS



STORMWATER STEWARDSHIP GRANTS FOR PRIVATE PROPERTY OWNERS



- Eligible projects include bioswales, downspout disconnections, infiltration trenches, permeable pavement/concrete/pavers, rain gardens, and water retention/storage

- Help filter and reduce stormwater runoff flowing into the municipal sewer system, local creeks, Cootes Paradise, Hamilton Harbour and Lake Ontario



FLOODPLAIN MAPPING UPDATE PROGRAM

2019 – STONEY CREEK & BATTLEFIELD CREEK



HCA 2019 Budget Details

As approved by HCA Board of Directors
November 1, 2018

GOALS

- 1) Support Conservation Authorities Act mandate
- 2) Operate on a cash neutral/positive basis
- 3) Budget for no greater levy increase than recommended by City Council/staff

OPERATE ON A CASH NEUTRAL / POSITIVE BASIS

Revenues are a combination of:

- Self generated commercial sales
- Corporate and individual donations and grants
- Federal and provincial grants
- Municipal special project grants
- Municipal levy
- 2019 \$13.2 million

Expenses are a combination of:

- Salaries, wages and staff expenses
- Fleet operation, repair and maintenance
- Facility operating costs including utilities
- Third party contracting and consulting services
- Marketing and promotion
- 2019 \$13.0 million

Repayment of loan principal

- Repayment of loans for Canal Park and wind up of Defined Benefit pension plan
- 2019 \$0.2 million

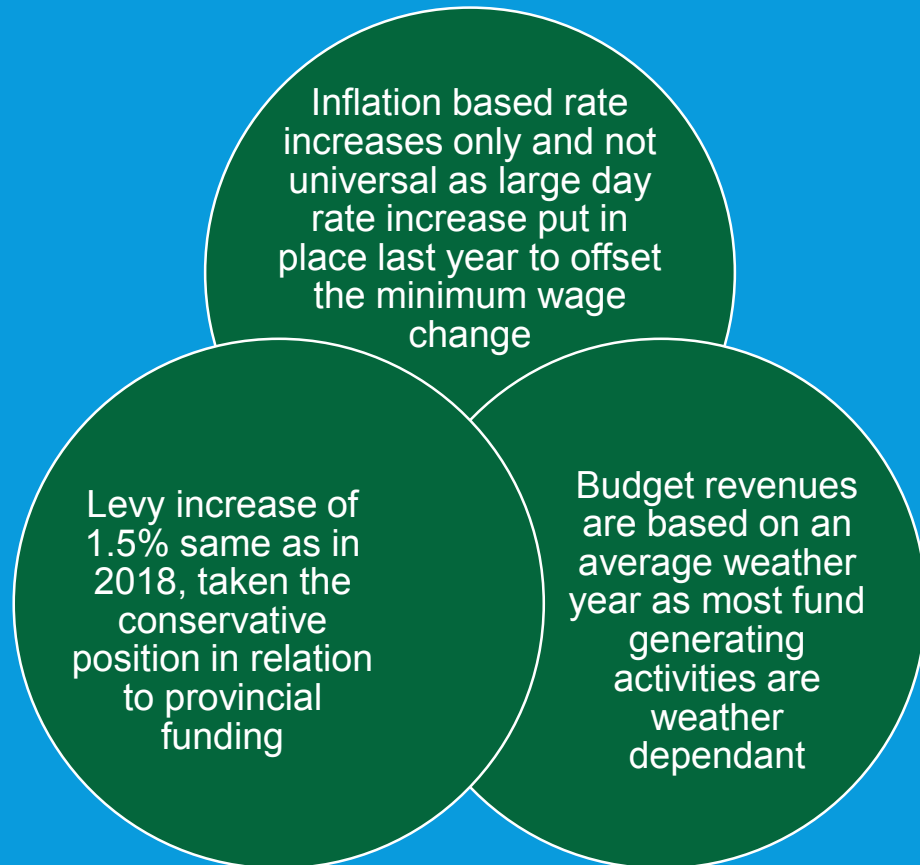
LEVY INCREASE

- This year's levy request is the same as last year
 - Recommended increase of 1.5%, last year was also 1.5%
 - Translates to \$65,700 increase
- Total levy required this year is
 - City of Hamilton share is 99.4%, \$ 4,429,100
 - Township of Puslinch share is 0.6%, \$ 28,600

LEVY USE

Division	2019	2018	\$ Change
Conservation Areas	\$0	\$0	\$0
Westfield Village	590,500	581,800	8,700
WP&E	1,288,400	1,187,600	100,800
Corporate Support	2,578,800	2,622,600	-43,800
Total	\$4,457,700	\$4,392,000	\$65,700

REVENUE HIGHLIGHTS



	<u>2019</u>	<u>2018</u>
City Levy	\$ 4,458	\$ 4,392
Admissions	2,282	2,037
Marina	1,368	1,352
Equipment	1,214	1,180
Camping	1,037	983
Fees	726	710
Other	2,133	2,047
	<u>\$ 13,218</u>	<u>\$12,701</u>

EXPENSE HIGHLIGHTS

Staffing stability in numbers, represents 61% of pre-loan expenses

Inflation pressures not significant at this time

No major change in operations in 2019 so costs in total only rise 4%

	<u>2019</u>	<u>2018</u>
Staff	\$ 7,906	\$ 7,731
Equipment	1,269	1,257
Materials	499	494
Utilities	469	487
Other	<u>2,866</u>	<u>2,529</u>
	\$ 13,009	\$12,498
Loan	<u>209</u>	<u>203</u>
	\$ 13,218	\$12,701

LOAN PAYMENTS

Remaining loans :

- **1) 2018 Veldhuis (Canal Park) loan**
- 44K principal payment, \$0 interest
- 2010 - Original terms - Loan of \$440 thousand @ 0.0% interest, 10 year term
- final payment March 31st, 2020

- **2) 2018 DB Pension Deficit loan:**
- \$159K principal payment, \$28K interest
- 2011 - Original terms - Loan of \$1.5 million @ 4.25% interest, 10 year term
- final payment June 30th, 2021

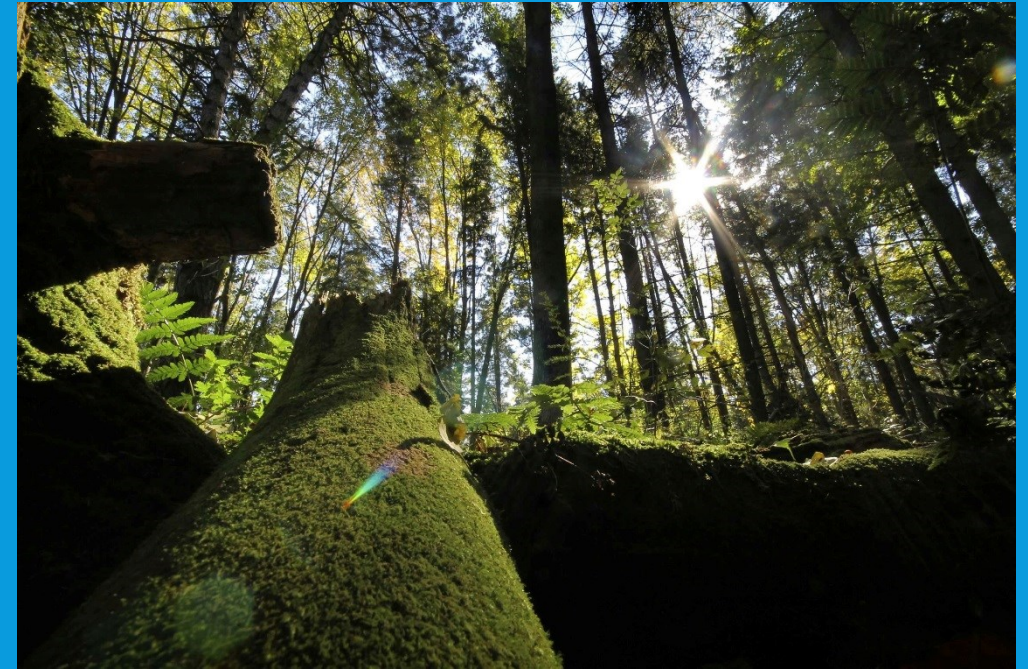
CONFEDERATION BEACH PARK

- Owned by the City of Hamilton, managed by the HCA
- Management agreement expired December 31st, 2016
- New agreement now in place: term of 10 years plus two 5 year renewals
- Only monetary impact to HCA is the management fee, calculated as a percentage of expenses, approximately \$400K per year
- The 2018 attendance was strong at Wild Waterworks; joining 2015 and 2016 as top 5 in the waterparks history

2019 BUDGET SUMMARY

2019 budget provides :

- Sufficient self generated revenues to meet expenses
- Updated floodplain mapping
- Development steps for Saltfleet wetlands
- Education and stewardship programs
- Updated master plans





THANK YOU FOR YOUR CONTINUED SUPPORT

