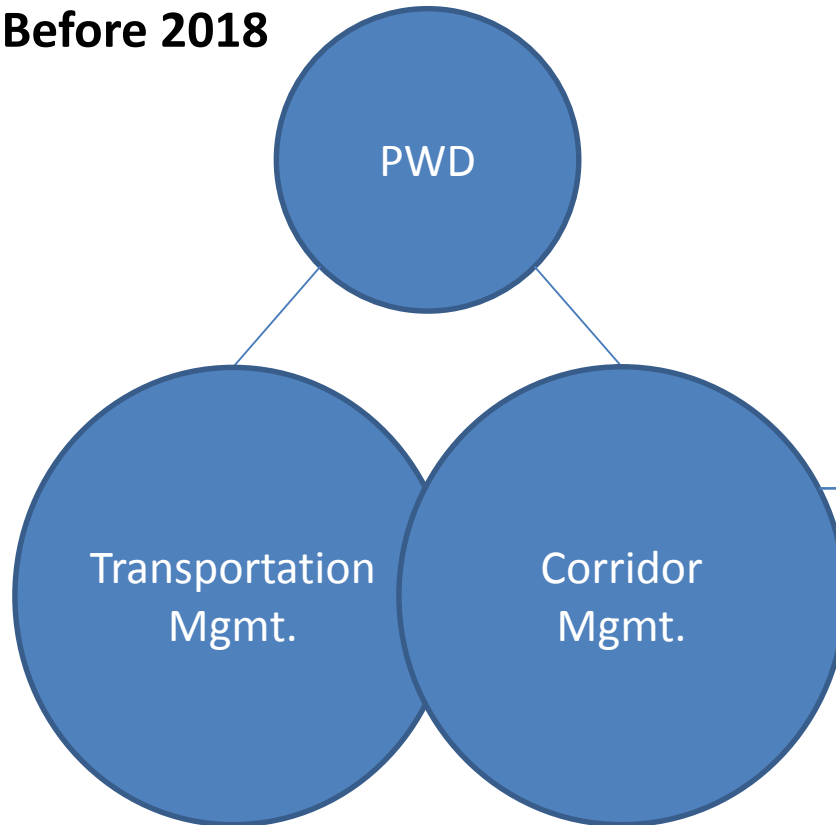


CONTINUOUS IMPROVEMENT: TRANSPORTATION REVIEWS FOR DEVELOPMENT CASE STUDY 19

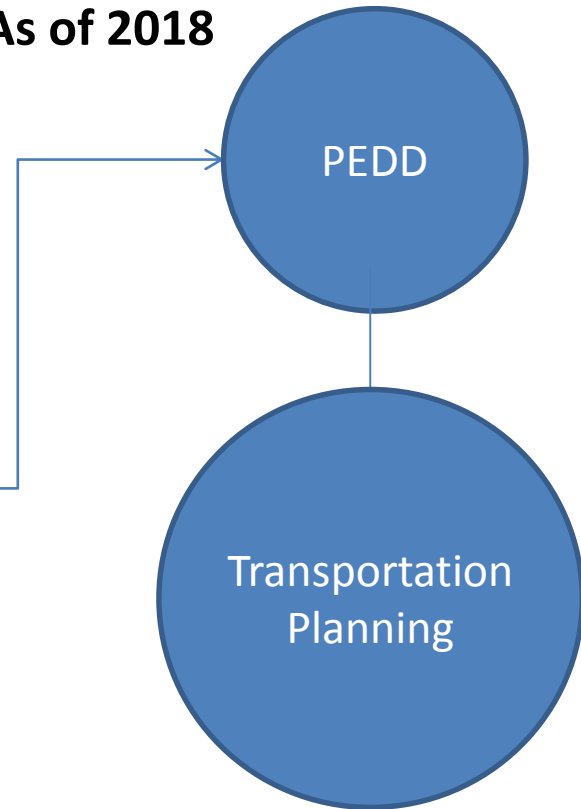
September 6, 2018

Continuous Improvement

Before 2018



As of 2018



Continuous Improvement

Services provided by Transportation Planning



* Conduit to Public Works to coordinate reviews

Continuous Improvement

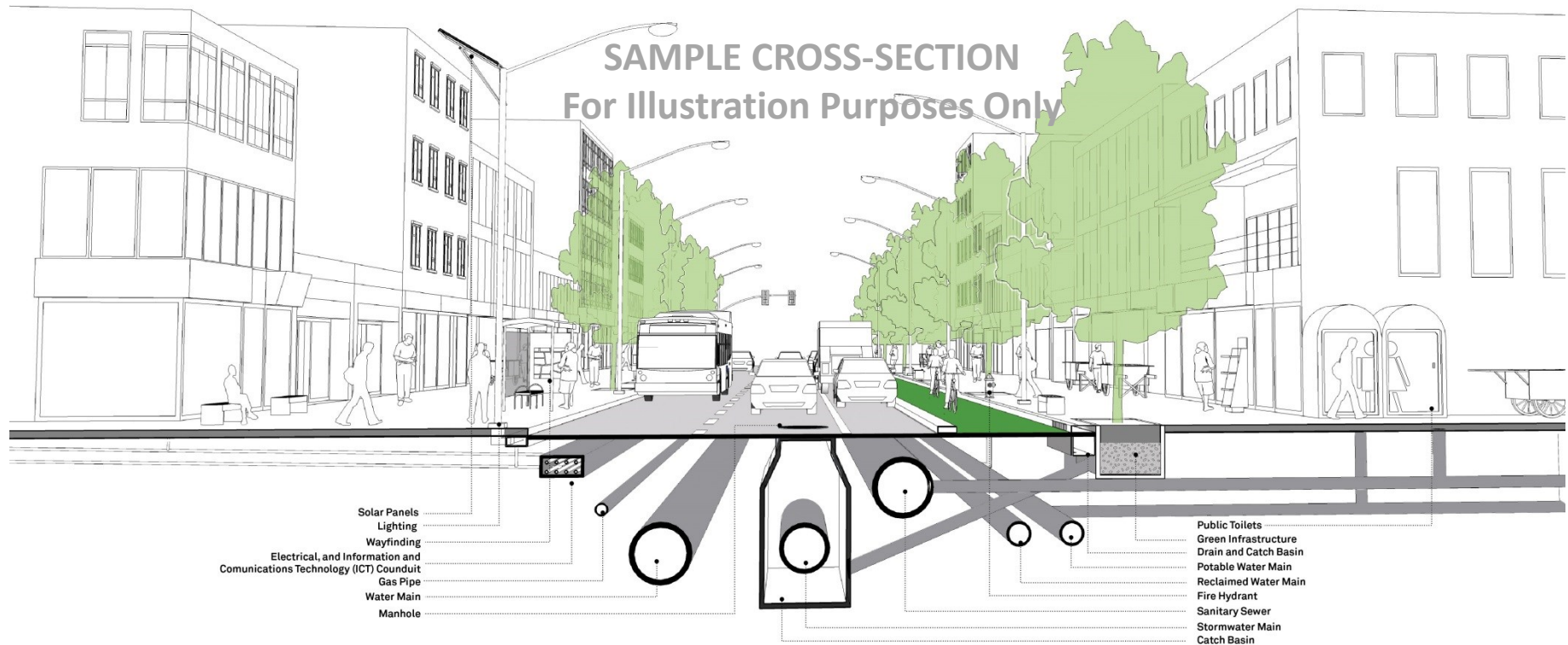
Transportation policy conformance examples:

- Official Plan
- Secondary Plans
- Transportation Master Plan
- Sub-area Transportation Plans
- Pedestrian Mobility Plan
- Cycling Master Plan
- Conformance or integration with Environmental Assessments
- Higher-Order Transit
- Transit-Oriented Development Guidelines
- Right-of-Ways*
- Daylight Triangles*

* In coordination with Public Works and Development Engineering

Continuous Improvement

Right-of-Ways

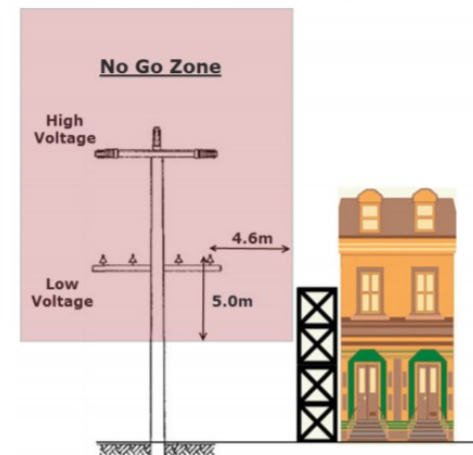
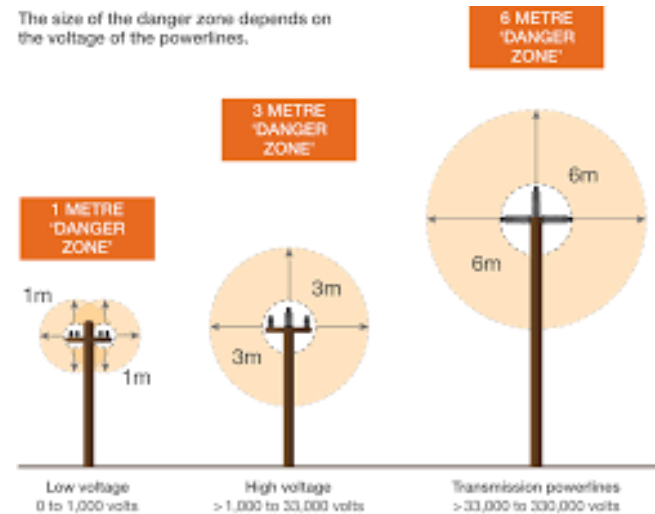


Continuous Improvement

Right-of-Ways



The size of the danger zone depends on the voltage of the powerlines.



Scaffolding No Go Zone

Continuous Improvement

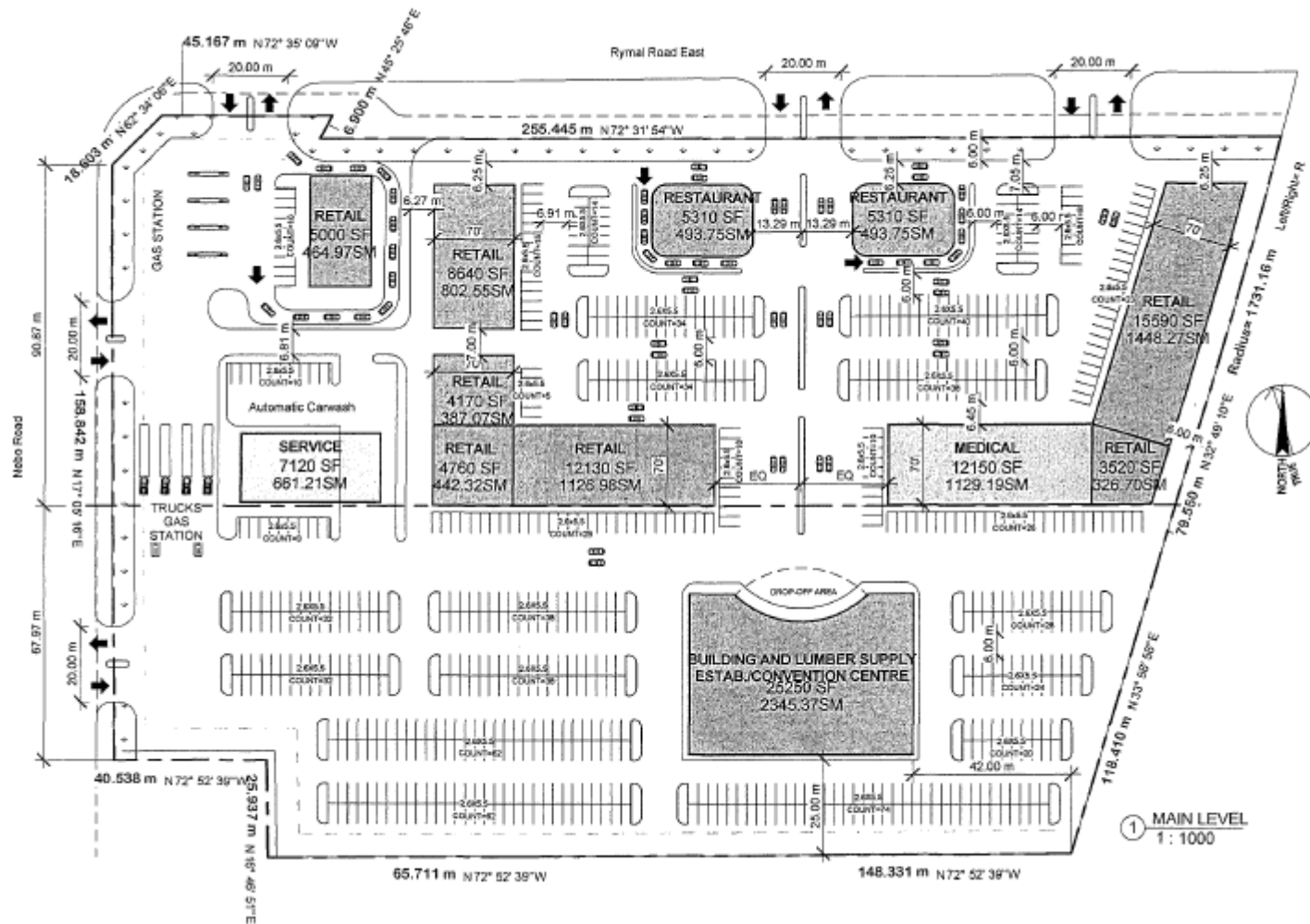
Transportation review examples:

- Intersection and driveway sight-lines
- Driveway access and alignment
- Pedestrian and cycling routing, access and safety
- Parking lay-bys
- Site plan layout, circulation and loading
- Access management
- Visibility triangles
- Transportation Impact Studies*
 - Trip generation/assignment
 - Traffic signal operations
 - Queuing
 - Turn Lane requirements
 - Multi-modal assessments
 - Traffic Calming Studies*
 - Minimize cut-through traffic
 - Address speeding issues
 - Proactively improve road safety

* In coordination with Public Works

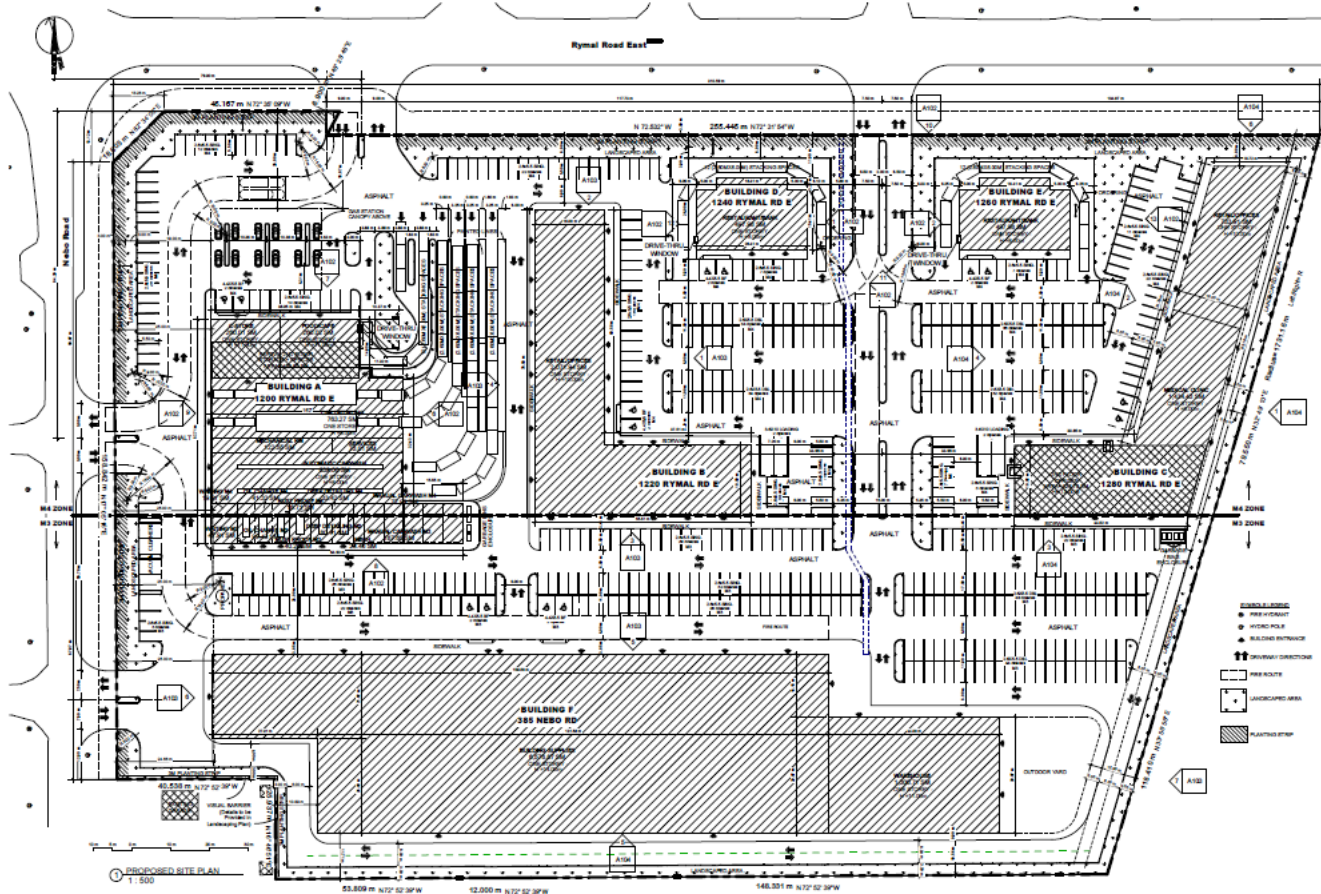
Continuous Improvement

Before



Continuous Improvement

After...



...and still fine tuning.

9

Continuous Improvement

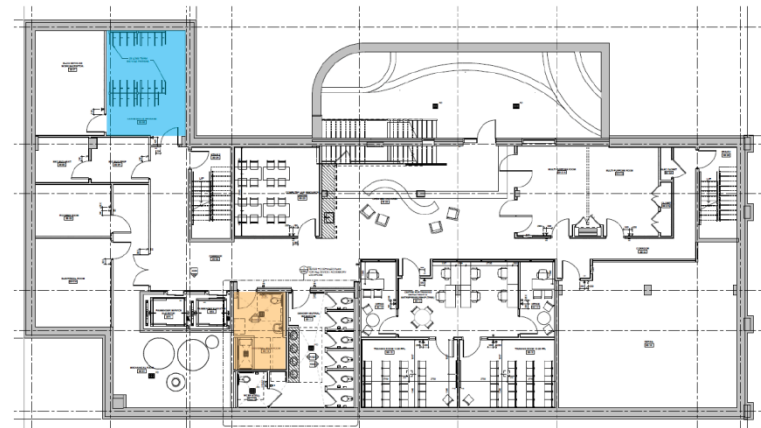
Travel Demand Management (TDM):

Encourage behaviour change by encouraging developments to integrate strategies to reduce trips and re-mode, such as:

- On-site bicycle racks
- Pedestrian, cycling, and transit accommodation
- Smart Commute program
- Car Share spaces
- Bike Share integration (if applicable)
- Carpool parking
- Parking strategies
- Wayfinding / signage

Continuous Improvement

TDM Measures



Continuous Improvement



12

Continuous Improvement

Table 1: Summary of Completed and Remaining Development Reviews

Month	Received	Completed	Balance
Balance as of January 31, 2018			156
February	15	12	159
March	39	34	164
April	36	24	176
May	43	41	178
June	25	103	100
July	31	45	86

Continuous Improvement

Table 2: Summary of Completed and Remaining TIS Reviews

Month	Received	Completed	Balance
Balance as of January 31, 2018			35
February	2	1	36
March	6	1	41
April	4	1	44
May	11	3	52
June	7	4	55
July	2	6	51

Continuous Improvement

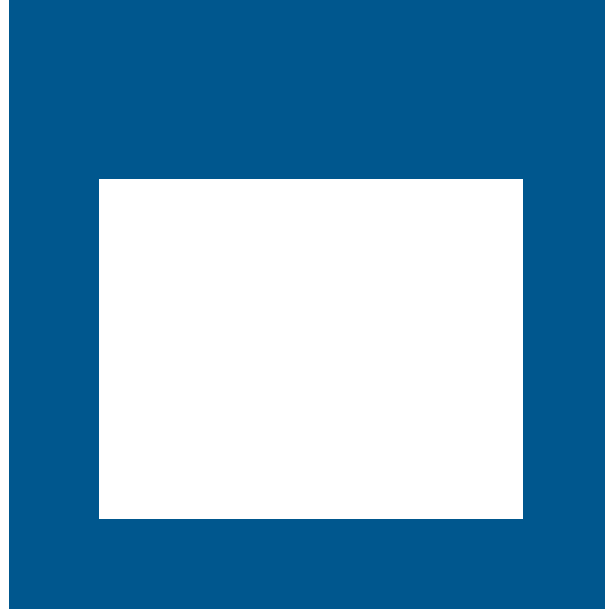
Table 3: Summary of Related Transportation Reviews

Type	Jan 1 – July 31, 2018
	Completed
Surplus Lands	38
TDM	47
ROWIA	14
COA	332
Total	431

Continuous Improvement

Next Steps

- Training session for staff by an external specialist in traffic reviews, updates to the TIS Guidelines to provide clarity on scope
- Improve initial categorization of applications to guide staffing assignments
- Integrate Transportation Planning reviews into the Amanda System to provide a direct link to the development application, timelines and comment tracking
- Continuous refinement of process for efficiencies
- Improving historical filing information to improve consistency
- Continue to collaborate with PED and PWD stakeholders to improve commenting process



THANK YOU