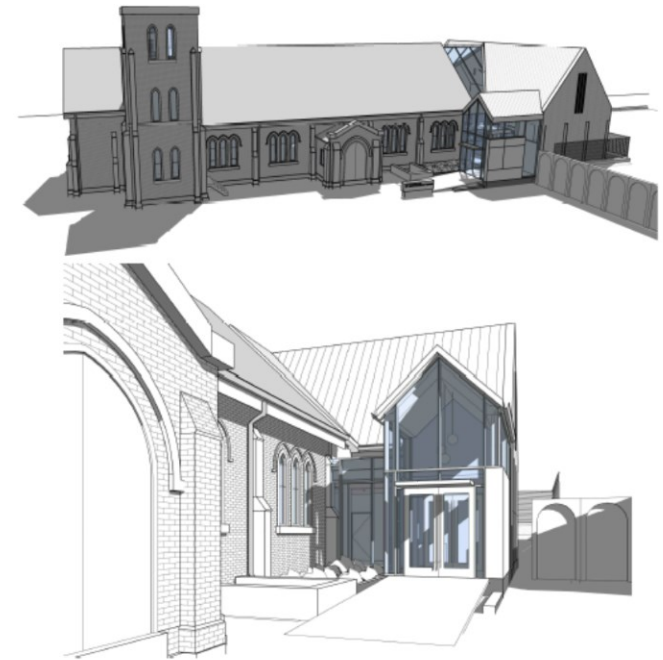


# ST. MARK'S REHABILITATION

## Phase 2 Update

## St. Mark's Restoration Phase 2



### Phase 2 includes:

- Restoration of the inside of the church
- Completion of sewer hook ups at street
- Construction of an addition on the west side of the property for bathrooms, kitchen and an accessible entrance
- Installation of cooling system and security system
- Completion of landscape improvements including parking and garden
- Estimated start of construction Q3 2019

# Landscape and Garden





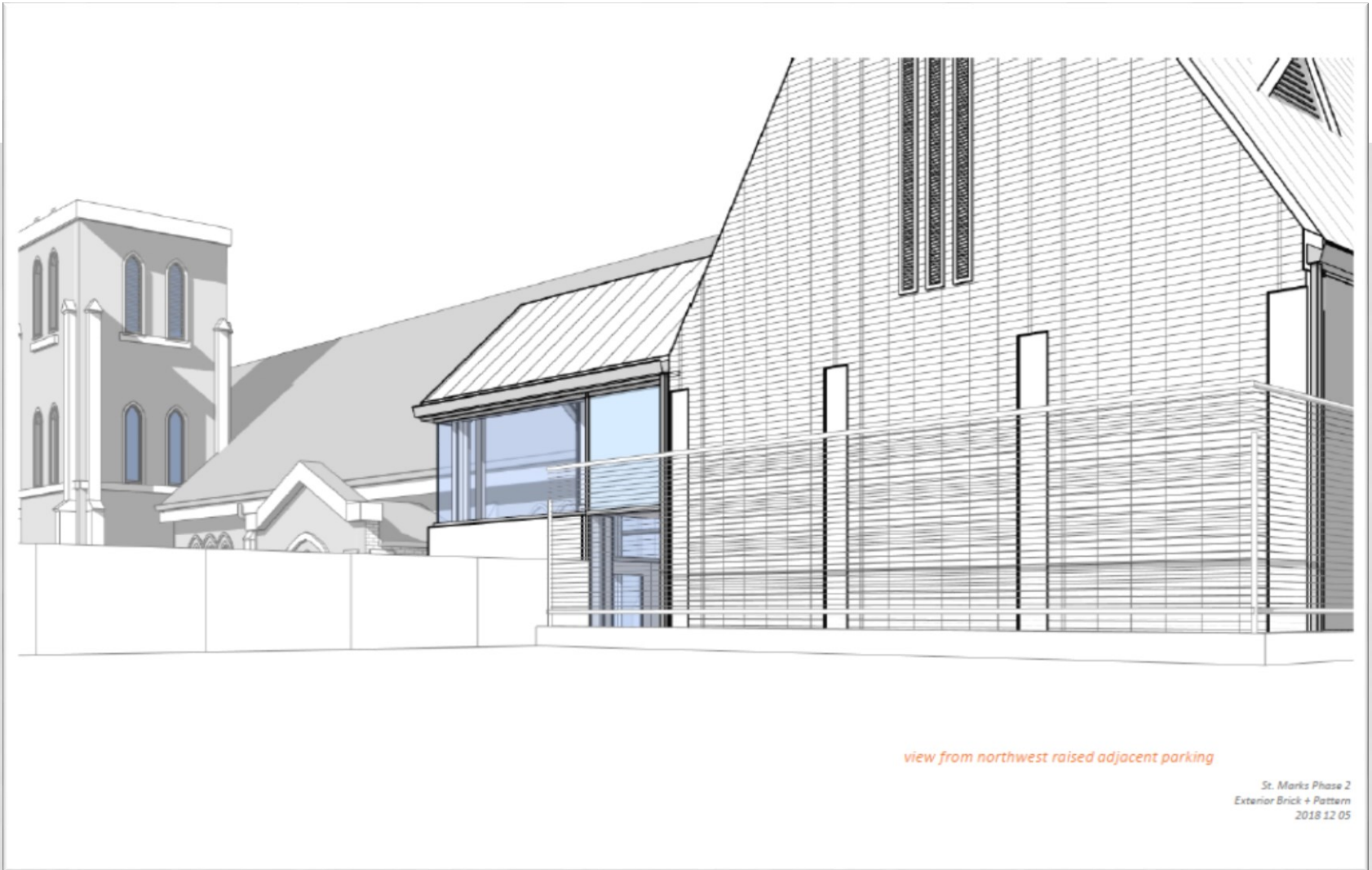
## View looking west



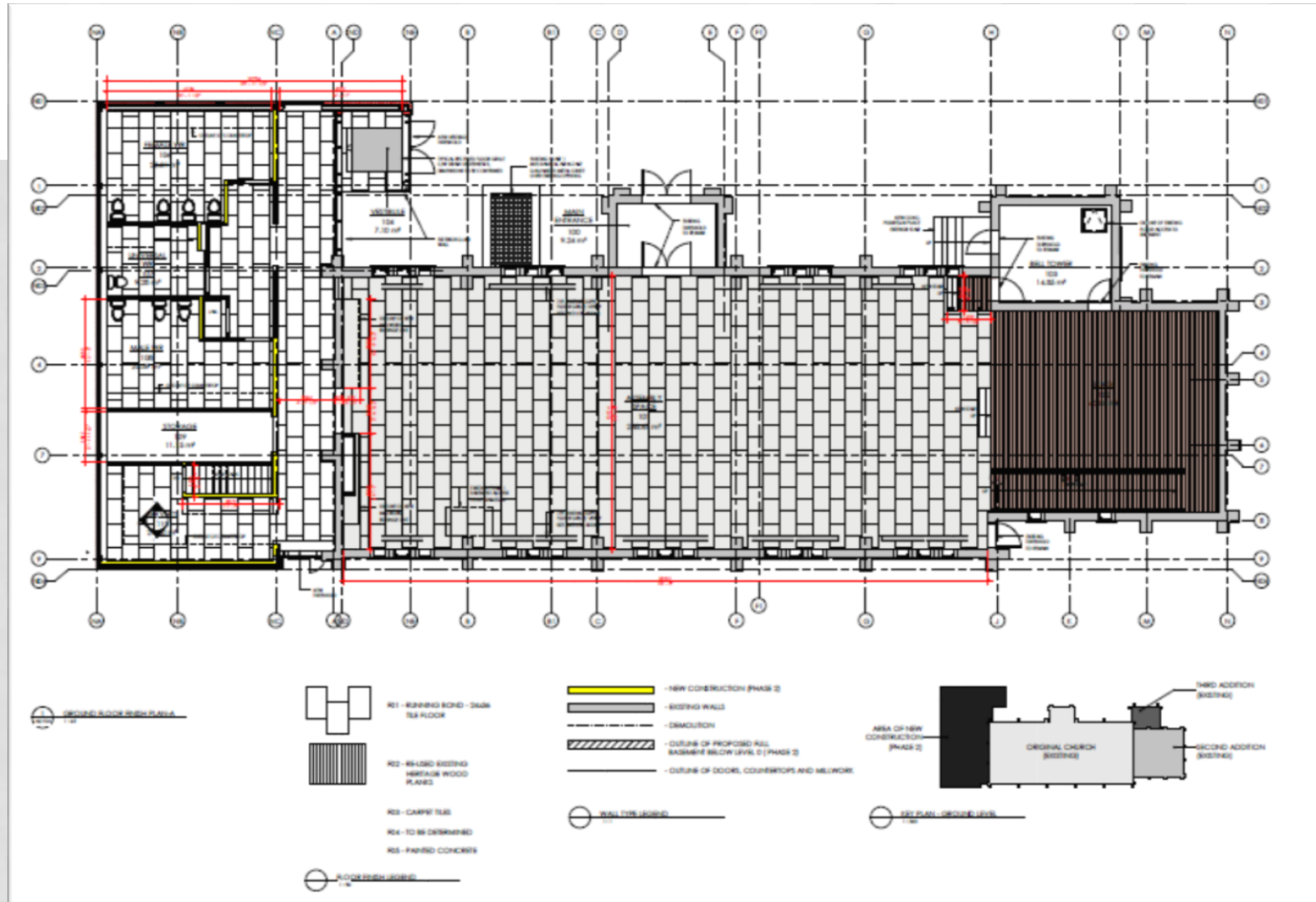
## Night view looking west



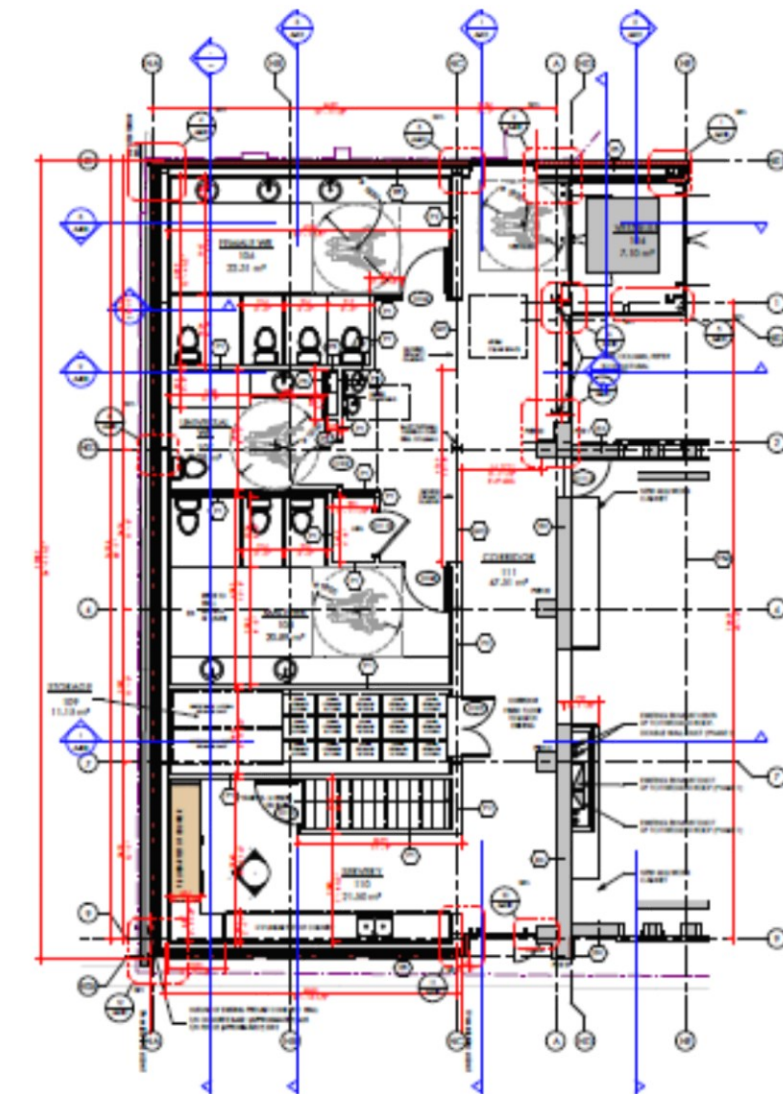
## View from parking lot looking south



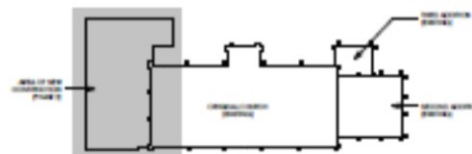
# Floorplan



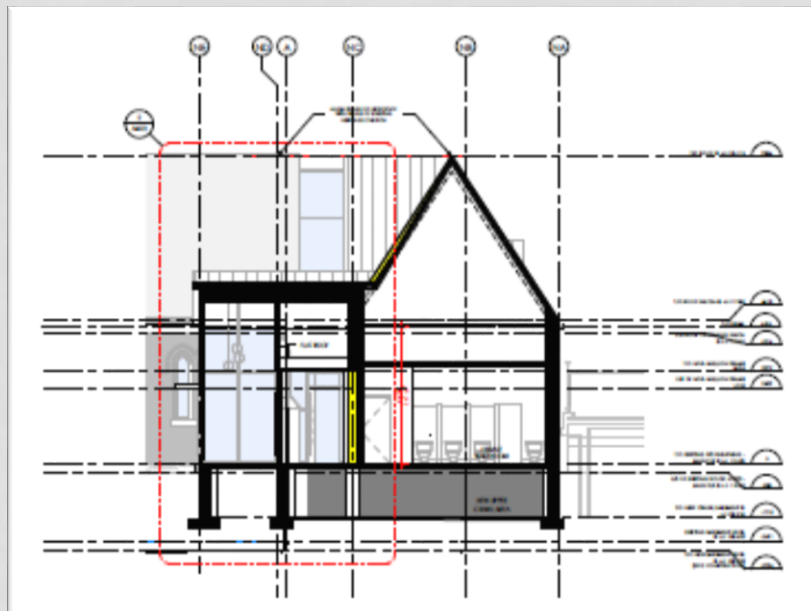
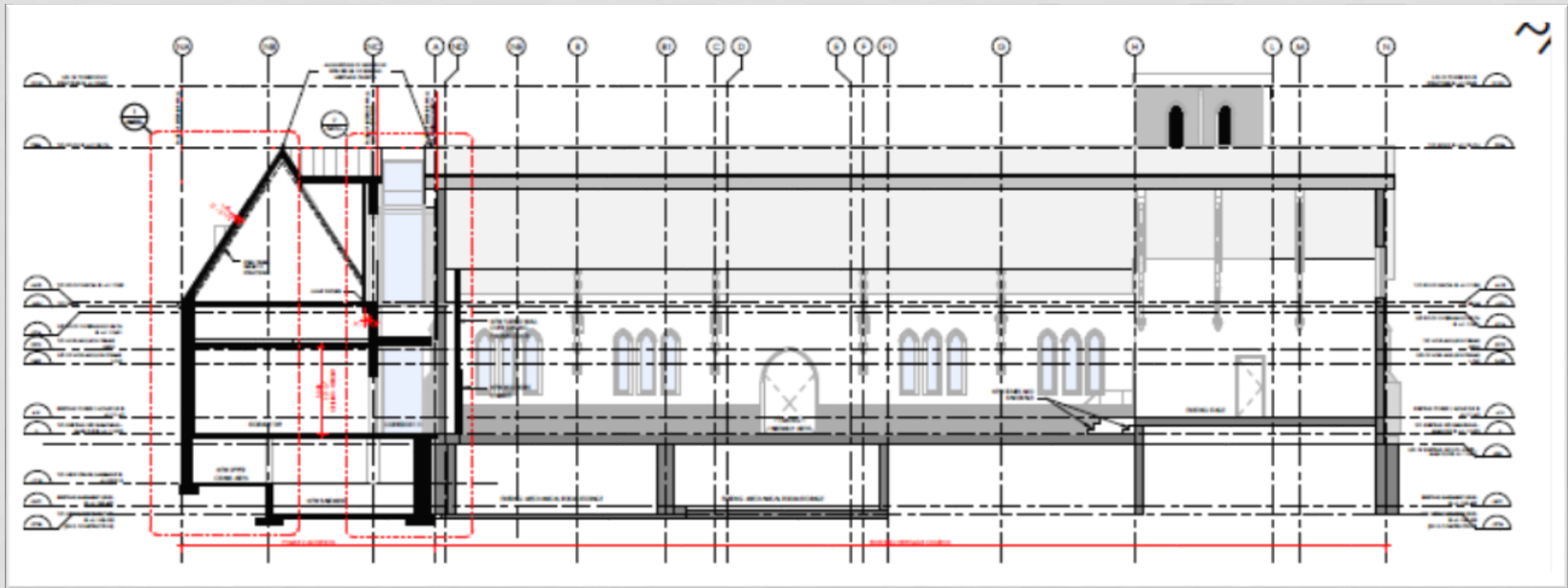




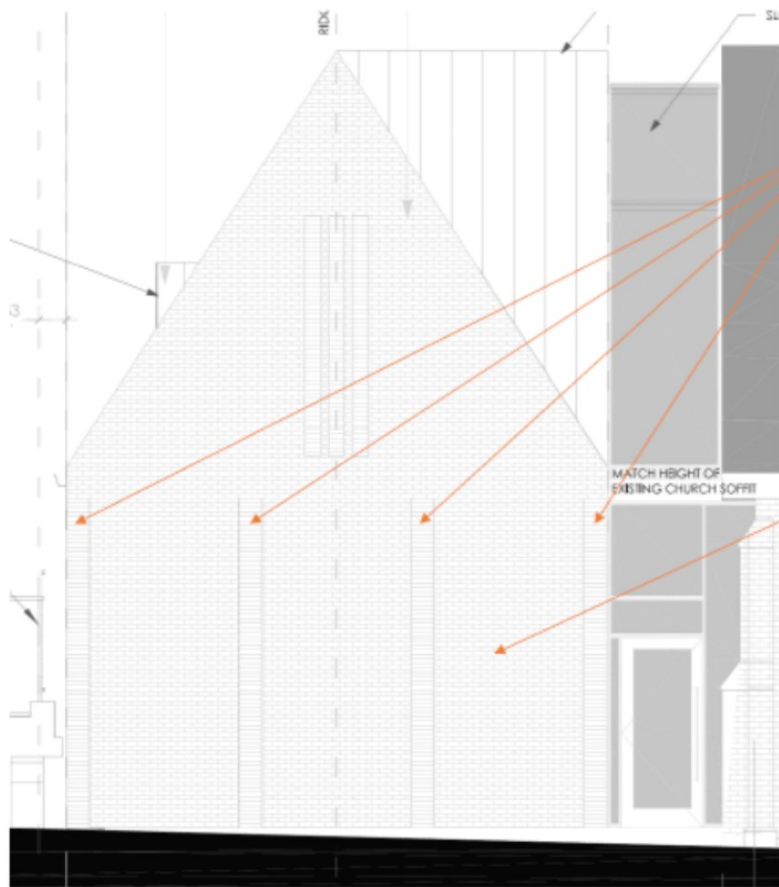
PHASE 2 ADDITION - BLOCK PLAN  
1/8" = 1'-0"



PHASE 2 ADDITION - SITE PLAN  
1/8" = 1'-0"



view from north courtyard approach



*Stacked Bond  
Iron Spot  
at Pier Locations Recessed*



*Running Bond  
Iron Spot  
at field*



*OPTION 2 - preferred*

St. Marks Phase 1  
Exterior Brick + Pattern  
2018.12.01



## Lighting

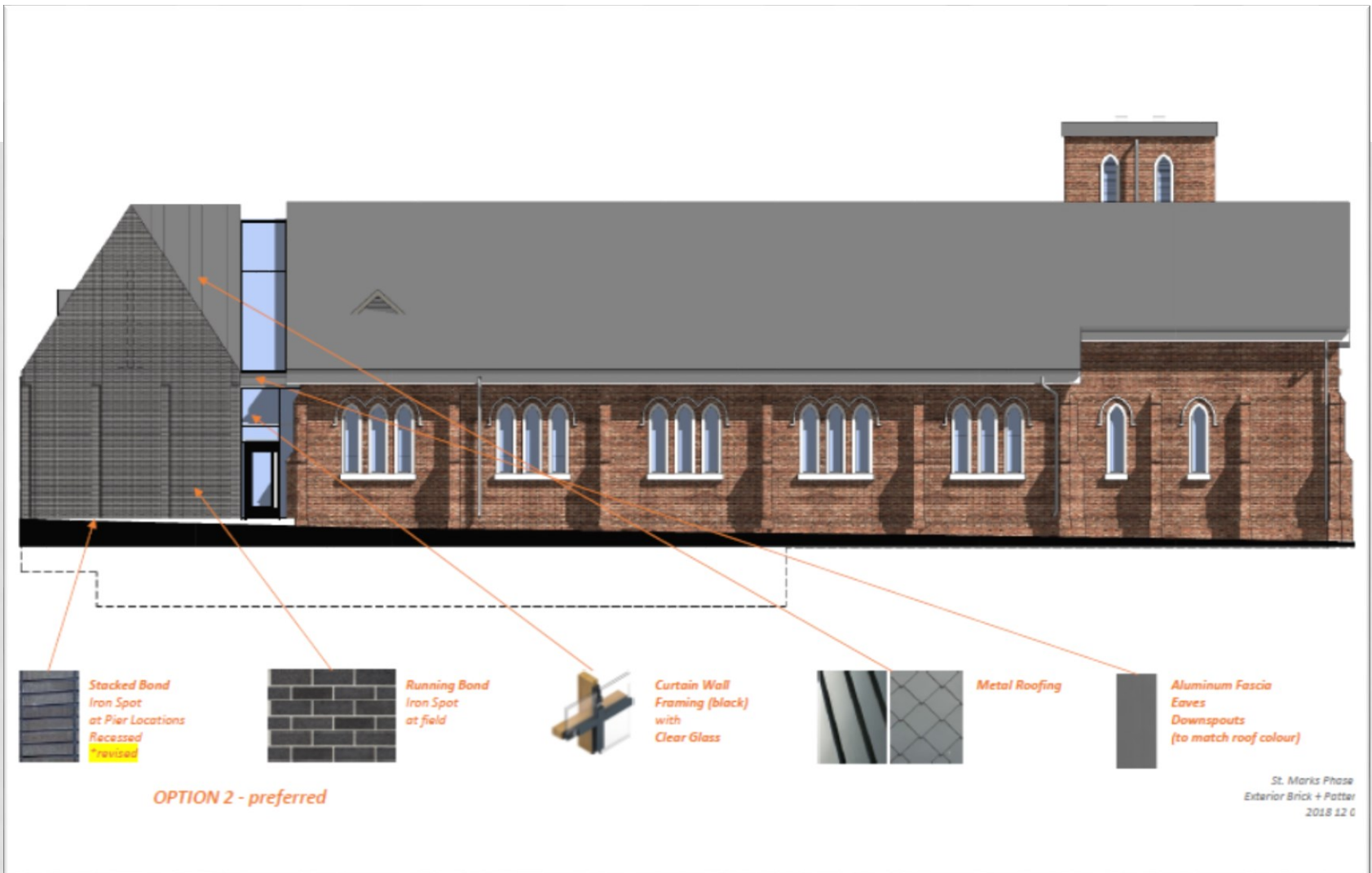


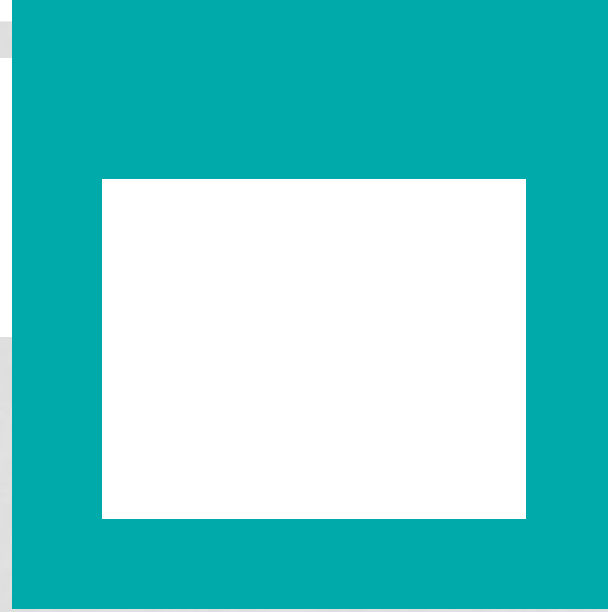
Many Available. 23"h, 12"dia





## View looking north





# QUESTIONS?