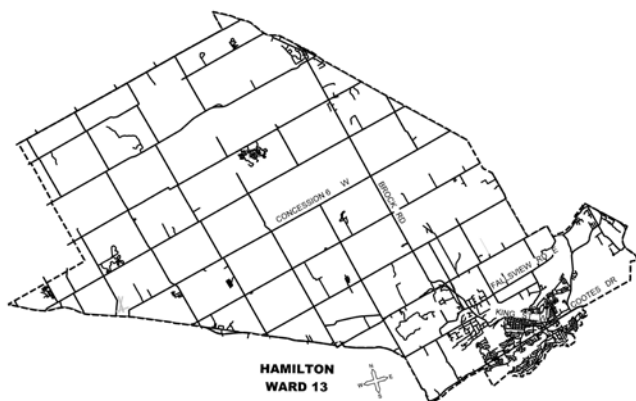


### KEY MAP



### LOCATION PLAN

*PROPOSED STOP CONTROL:*

**Brock Road at Highway 8**

Transportation Operations & Maintenance  
PUBLIC WORKS DEPARTMENT

### LEGEND



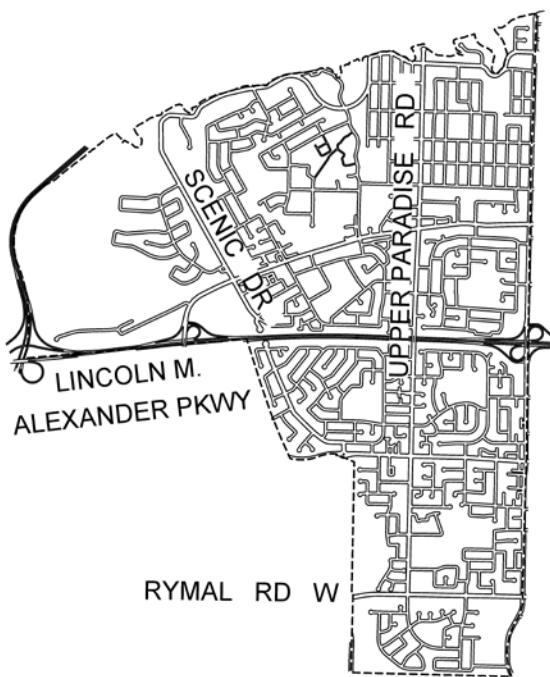
PROPOSED STOP

SCALE  
**NOT TO SCALE**

DATE  
**July 10, 2019**



### KEY MAP



**HAMILTON  
WARD 14**



### LOCATION PLAN

*PROPOSED STOP CONTROL:*

**Golfwood Dr and Atkins Dr**

Transportation Operations & Maintenance  
PUBLIC WORKS DEPARTMENT

### LEGEND

● EXISTING STOP

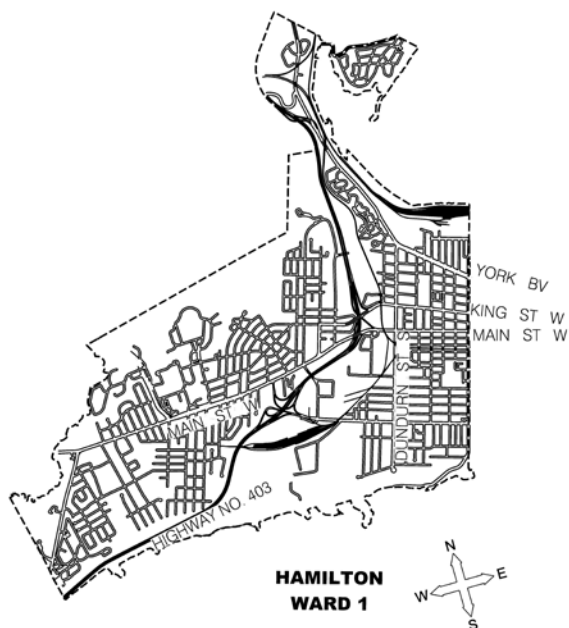
STOP PROPOSED STOP REMOVED

SCALE  
**NOT TO SCALE**

DATE  
**July 10, 2019**



### KEY MAP



### LOCATION PLAN

*PROPOSED STOP CONTROL:*

**Gary Avenue at Westwood Avenue**

Transportation Operations & Maintenance  
PUBLIC WORKS DEPARTMENT

### LEGEND



PROPOSED STOP

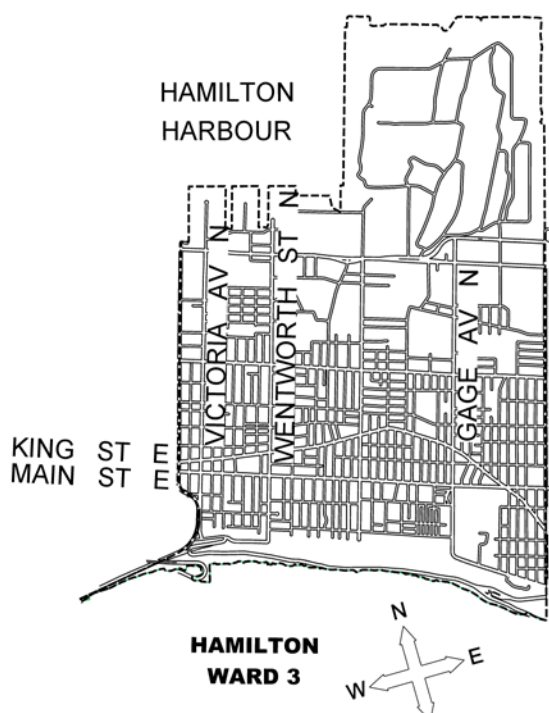
SCALE  
**NOT TO SCALE**

DATE  
**July 10, 2019**





### KEY MAP



### LOCATION PLAN

#### PROPOSED STOP CONTROL:

#### Campbell Avenue at Kensington Avenue

Transportation Operations & Maintenance  
PUBLIC WORKS DEPARTMENT

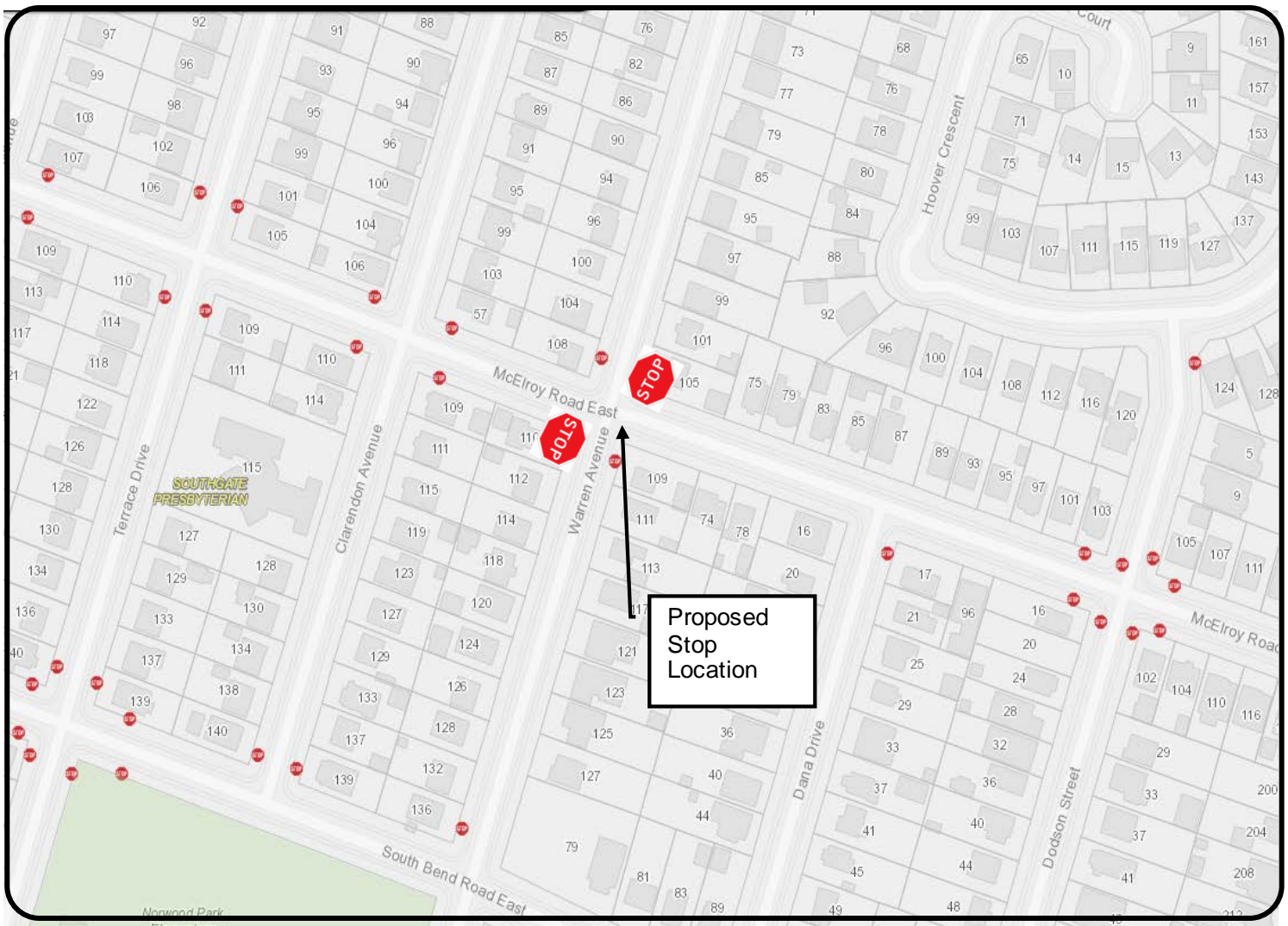
### LEGEND



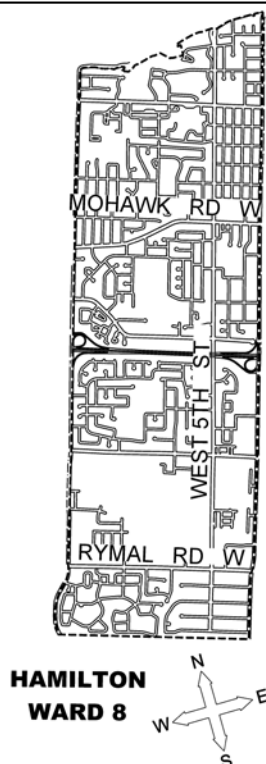
PROPOSED STOP

SCALE  
NOT TO SCALE

DATE  
July 10, 2019



### KEY MAP



### LOCATION PLAN

**PROPOSED STOP CONTROL:**

**McElroy Road East at Warren Avenue**

Transportation Operations & Maintenance  
PUBLIC WORKS DEPARTMENT

### LEGEND

- EXISTING STOP
- STOP PROPOSED STOP

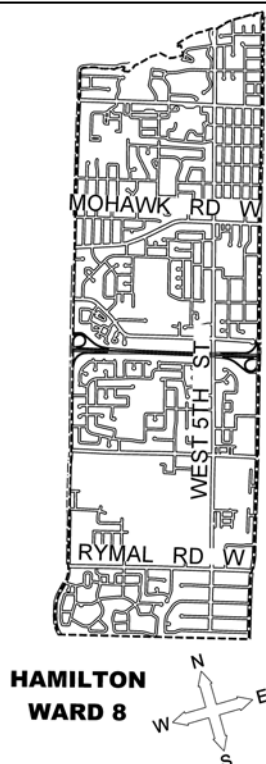
SCALE  
**NOT TO SCALE**

DATE  
**July 10, 2019**





### KEY MAP



### LOCATION PLAN

#### *PROPOSED STOP CONTROL:*

#### **McElroy Road East at Terrace Drive**

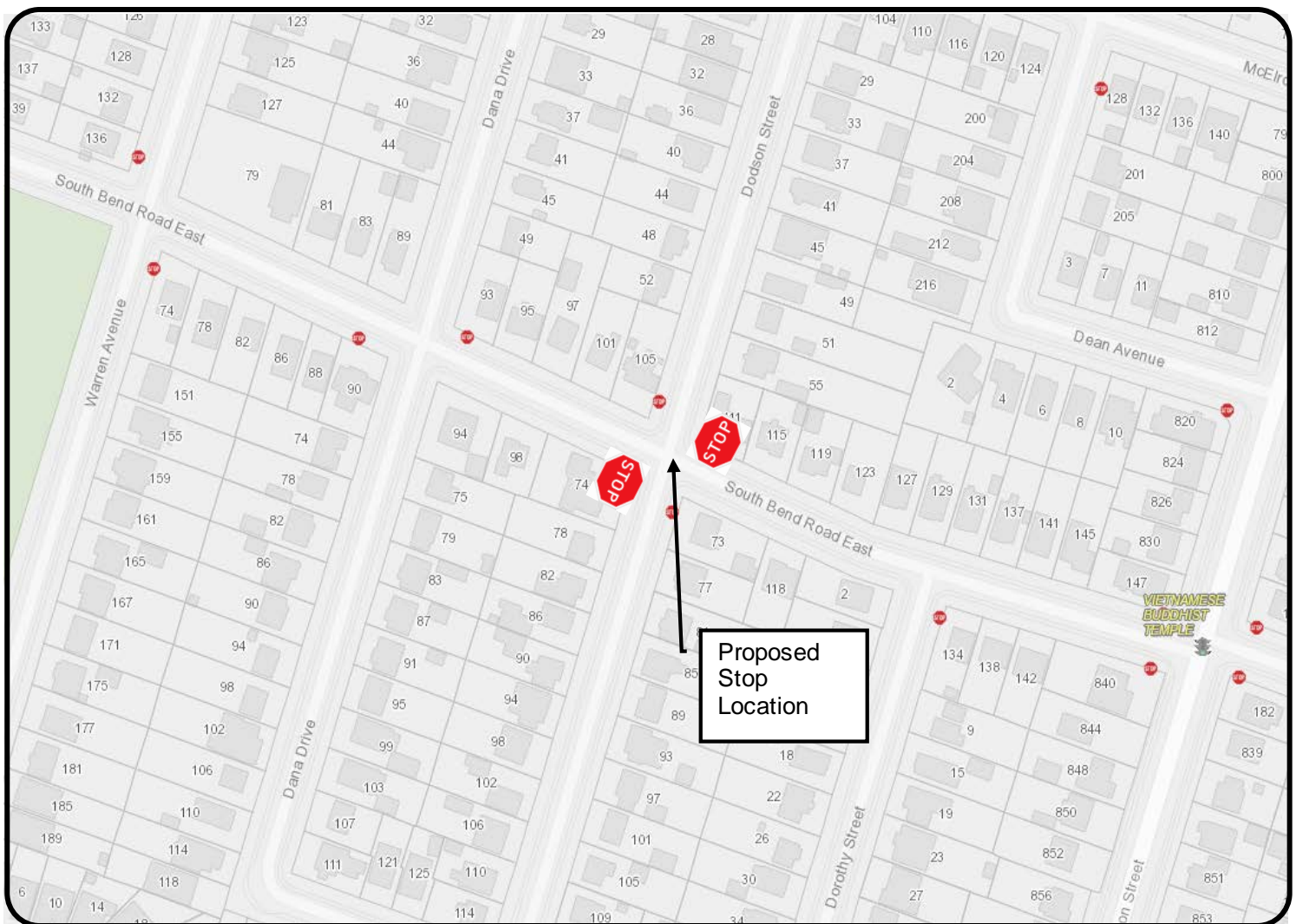
Transportation Operations & Maintenance  
PUBLIC WORKS DEPARTMENT

### LEGEND

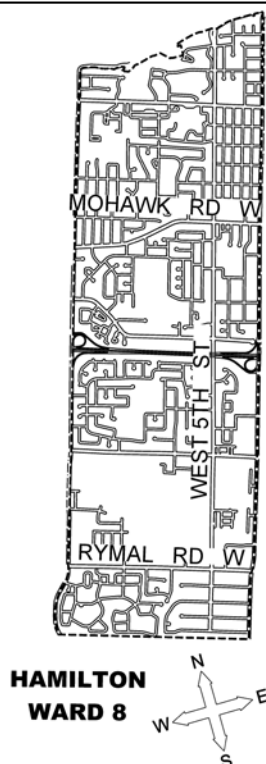
- EXISTING STOP
- STOP PROPOSED STOP

SCALE  
**NOT TO SCALE**

DATE  
**July 10, 2019**



### KEY MAP



### LOCATION PLAN

*PROPOSED STOP CONTROL:*

**South Bend Road East at Dodson Street**

Transportation Operations & Maintenance  
PUBLIC WORKS DEPARTMENT

### LEGEND

- EXISTING STOP
- STOP PROPOSED STOP

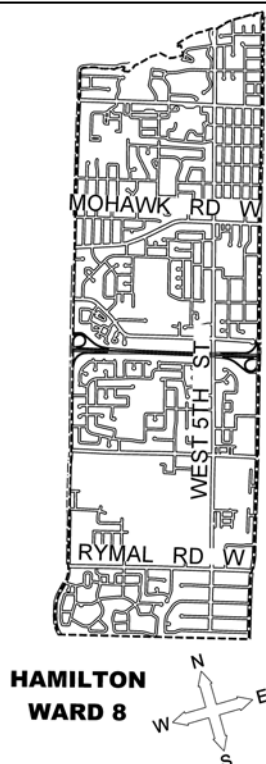
SCALE  
**NOT TO SCALE**

DATE  
**July 10, 2019**





### KEY MAP



### LOCATION PLAN

**PROPOSED STOP CONTROL:**

**South Bend Road East at Warren Avenue**

Transportation Operations & Maintenance  
PUBLIC WORKS DEPARTMENT

### LEGEND

- EXISTING STOP
- STOP PROPOSED STOP

SCALE  
**NOT TO SCALE**

DATE  
**July 10, 2019**