

3.1 ARCHITECTURAL DRAWINGS

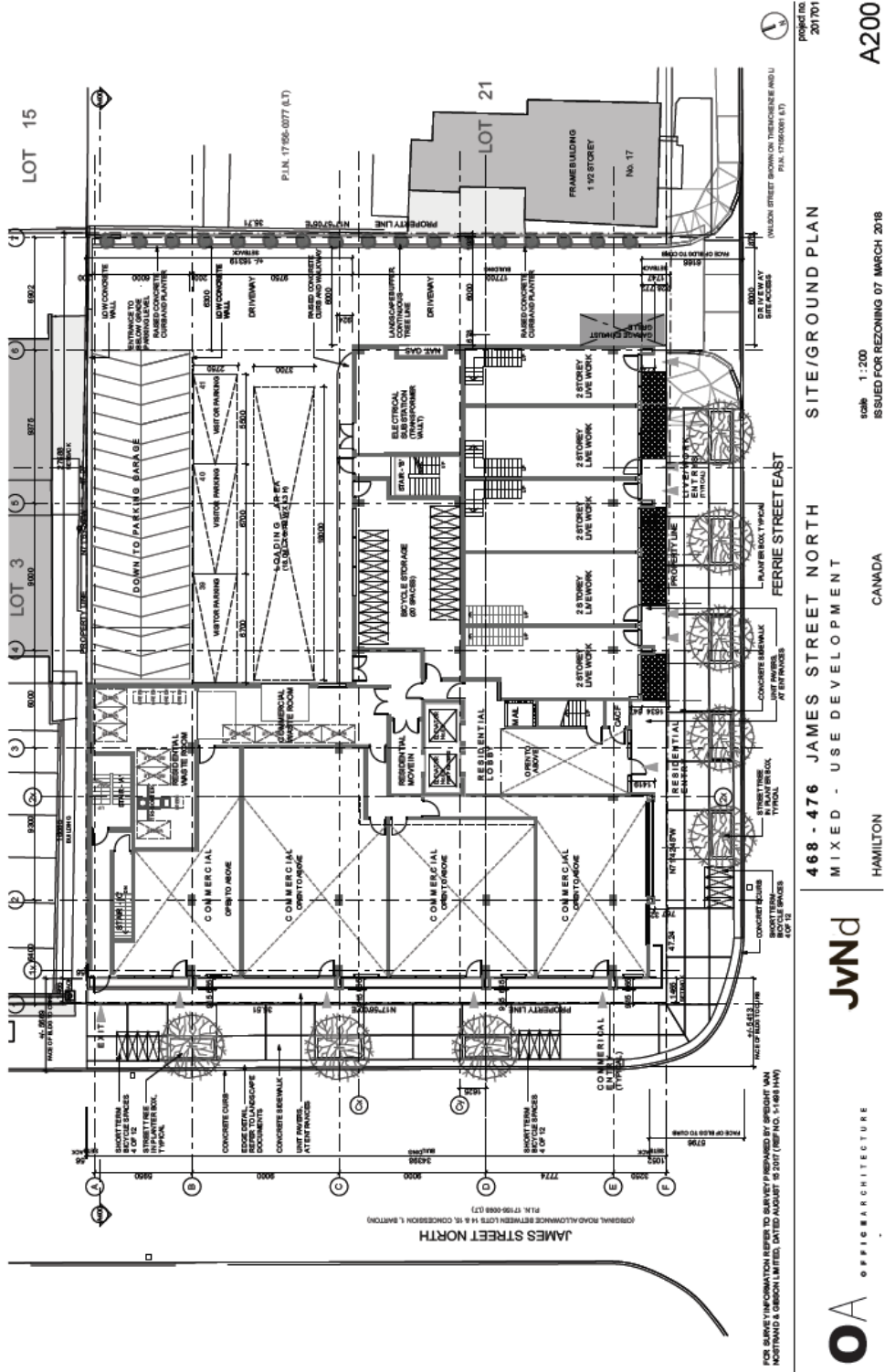


Figure 10: Proposed site/ground plan.

468 James St, Hamilton

18 **SvN**

**JvNd**

**OA** OFFICE ARCHITECTURE

FOR SURVEY INFORMATION REFER TO SURVEY PREPARED BY SPIEGEL VAN HOUTING & GEORGI LIMEZ, DATED AUGUST 15 2017 (REP. NO. 17-643-HM)

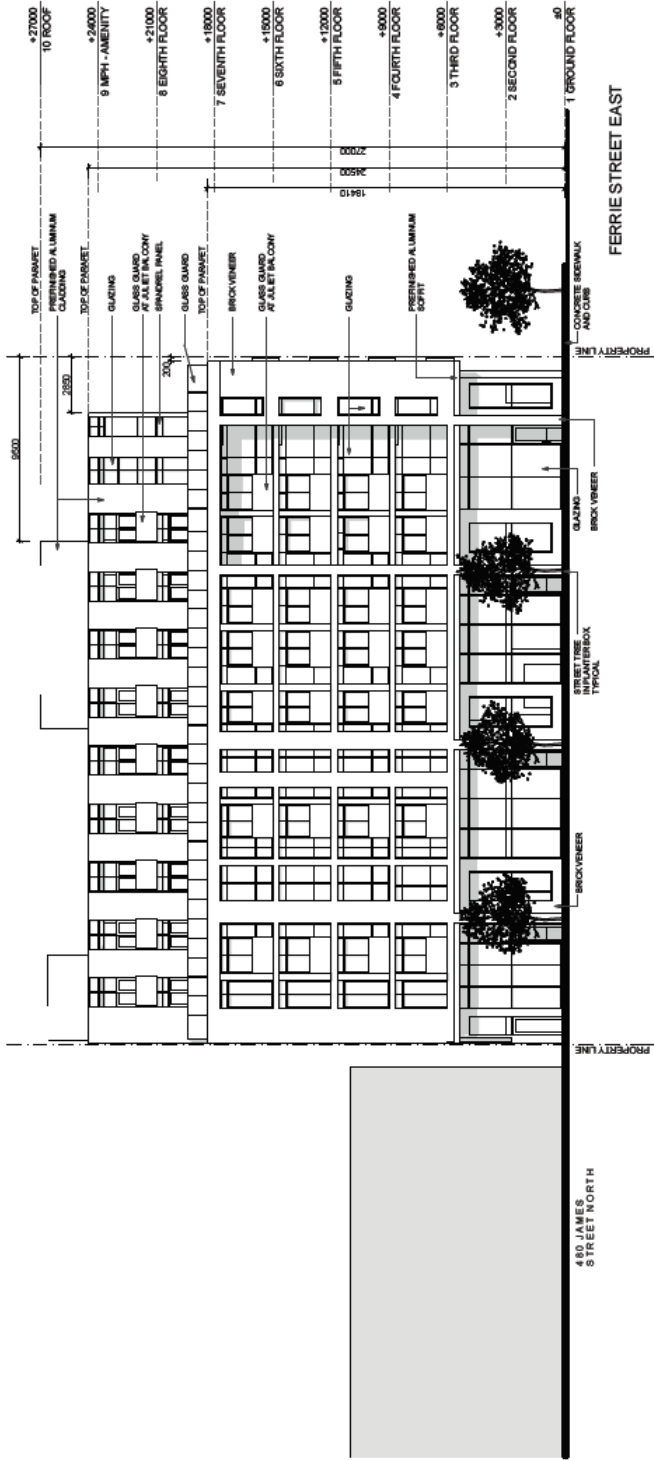
(CORONAL ROAD ALLOWANCE BETWEEN LOTS 14 & 15, CONCESSION R. BAYTON) P.L.N. 1759-088 (L7)

(CORONAL ROAD ALLOWANCE BETWEEN LOTS 14 & 15, CONCESSION R. BAYTON) P.L.N. 1759-077 (L7)

WILSON STREET BOUND ON THE CORNER AND U.P.A. 1759-081 (L7)

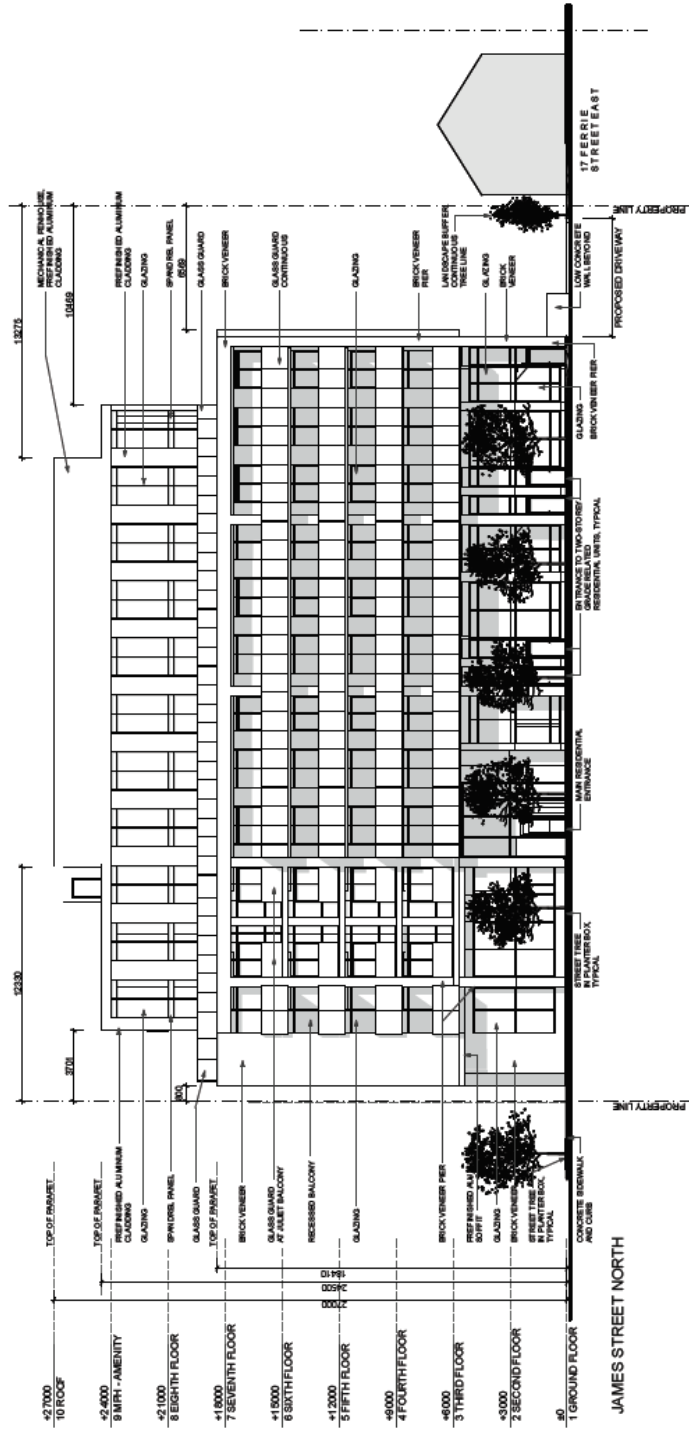
WILSON STREET BOUND ON THE CORNER AND U.P.A. 1759-081 (L7)

ARCHITECTURAL DRAWINGS



		<p>466 - 476 JAMES STREET NORTH MIXED - USE DEVELOPMENT HAMILTON CANADA</p>	<p>JAMES ST NORTH WEST ELEVATION scale 1:200 ISSUED FOR REZONING 07 MARCH 2016</p>	<p>project no. 201701 <b>A300</b></p>
--	--	-------------------------------------------------------------------------------------	------------------------------------------------------------------------------------------------	-----------------------------------------------

Figure 20: Proposed west elevation, James Street North facade.



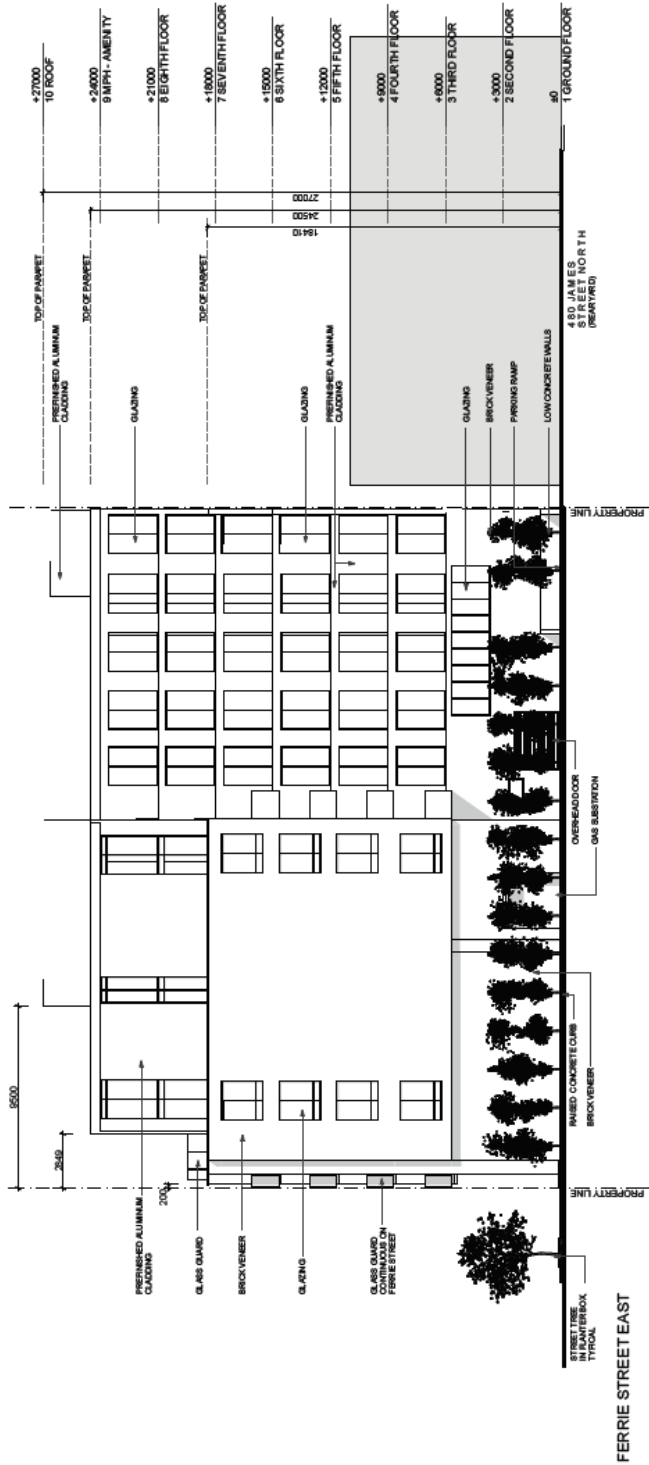
PROJECT NO.  
201701  
A301  
scale 1:200  
ISSUED FOR REZONING 07 MARCH 2018

466 - 476 JAMES STREET NORTH  
MIXED - USE DEVELOPMENT  
HAMILTON CANADA

OA OFFICE ARCHITECTURE  
JVN/d

Figure 21: Proposed south elevation, Ferrie Street facade.

ARCHITECTURAL DRAWINGS



		<p>466 - 476 JAMES STREET NORTH MIXED - USE DEVELOPMENT HAMILTON CANADA</p>	<p>REAR EAST ELEVATION scale 1:200 ISSUED FOR REZONING 07 MARCH 2018</p>	<p>project no. 207701  A302</p>
--	--	-------------------------------------------------------------------------------------	--------------------------------------------------------------------------------------	---------------------------------------------

Figure 22: Proposed south elevation.

468 James St, Hamilton

