







**REVISION RECORD**

NO.	DATE	DESCRIPTION
1	2018-01-15	ISSUED FOR PERMITS
2	2018-01-15	ISSUED FOR PERMITS
3	2018-01-15	ISSUED FOR PERMITS
4	2018-01-15	ISSUED FOR PERMITS
5	2018-01-15	ISSUED FOR PERMITS
6	2018-01-15	ISSUED FOR PERMITS
7	2018-01-15	ISSUED FOR PERMITS
8	2018-01-15	ISSUED FOR PERMITS
9	2018-01-15	ISSUED FOR PERMITS
10	2018-01-15	ISSUED FOR PERMITS
11	2018-01-15	ISSUED FOR PERMITS
12	2018-01-15	ISSUED FOR PERMITS
13	2018-01-15	ISSUED FOR PERMITS
14	2018-01-15	ISSUED FOR PERMITS
15	2018-01-15	ISSUED FOR PERMITS
16	2018-01-15	ISSUED FOR PERMITS
17	2018-01-15	ISSUED FOR PERMITS
18	2018-01-15	ISSUED FOR PERMITS
19	2018-01-15	ISSUED FOR PERMITS
20	2018-01-15	ISSUED FOR PERMITS
21	2018-01-15	ISSUED FOR PERMITS
22	2018-01-15	ISSUED FOR PERMITS
23	2018-01-15	ISSUED FOR PERMITS
24	2018-01-15	ISSUED FOR PERMITS
25	2018-01-15	ISSUED FOR PERMITS
26	2018-01-15	ISSUED FOR PERMITS
27	2018-01-15	ISSUED FOR PERMITS
28	2018-01-15	ISSUED FOR PERMITS
29	2018-01-15	ISSUED FOR PERMITS
30	2018-01-15	ISSUED FOR PERMITS
31	2018-01-15	ISSUED FOR PERMITS
32	2018-01-15	ISSUED FOR PERMITS
33	2018-01-15	ISSUED FOR PERMITS
34	2018-01-15	ISSUED FOR PERMITS
35	2018-01-15	ISSUED FOR PERMITS
36	2018-01-15	ISSUED FOR PERMITS
37	2018-01-15	ISSUED FOR PERMITS
38	2018-01-15	ISSUED FOR PERMITS
39	2018-01-15	ISSUED FOR PERMITS
40	2018-01-15	ISSUED FOR PERMITS
41	2018-01-15	ISSUED FOR PERMITS
42	2018-01-15	ISSUED FOR PERMITS
43	2018-01-15	ISSUED FOR PERMITS
44	2018-01-15	ISSUED FOR PERMITS
45	2018-01-15	ISSUED FOR PERMITS
46	2018-01-15	ISSUED FOR PERMITS
47	2018-01-15	ISSUED FOR PERMITS
48	2018-01-15	ISSUED FOR PERMITS
49	2018-01-15	ISSUED FOR PERMITS
50	2018-01-15	ISSUED FOR PERMITS
51	2018-01-15	ISSUED FOR PERMITS
52	2018-01-15	ISSUED FOR PERMITS
53	2018-01-15	ISSUED FOR PERMITS
54	2018-01-15	ISSUED FOR PERMITS
55	2018-01-15	ISSUED FOR PERMITS
56	2018-01-15	ISSUED FOR PERMITS
57	2018-01-15	ISSUED FOR PERMITS
58	2018-01-15	ISSUED FOR PERMITS
59	2018-01-15	ISSUED FOR PERMITS
60	2018-01-15	ISSUED FOR PERMITS
61	2018-01-15	ISSUED FOR PERMITS
62	2018-01-15	ISSUED FOR PERMITS
63	2018-01-15	ISSUED FOR PERMITS
64	2018-01-15	ISSUED FOR PERMITS
65	2018-01-15	ISSUED FOR PERMITS
66	2018-01-15	ISSUED FOR PERMITS
67	2018-01-15	ISSUED FOR PERMITS
68	2018-01-15	ISSUED FOR PERMITS
69	2018-01-15	ISSUED FOR PERMITS
70	2018-01-15	ISSUED FOR PERMITS
71	2018-01-15	ISSUED FOR PERMITS
72	2018-01-15	ISSUED FOR PERMITS
73	2018-01-15	ISSUED FOR PERMITS
74	2018-01-15	ISSUED FOR PERMITS
75	2018-01-15	ISSUED FOR PERMITS
76	2018-01-15	ISSUED FOR PERMITS
77	2018-01-15	ISSUED FOR PERMITS
78	2018-01-15	ISSUED FOR PERMITS
79	2018-01-15	ISSUED FOR PERMITS
80	2018-01-15	ISSUED FOR PERMITS
81	2018-01-15	ISSUED FOR PERMITS
82	2018-01-15	ISSUED FOR PERMITS
83	2018-01-15	ISSUED FOR PERMITS
84	2018-01-15	ISSUED FOR PERMITS
85	2018-01-15	ISSUED FOR PERMITS
86	2018-01-15	ISSUED FOR PERMITS
87	2018-01-15	ISSUED FOR PERMITS
88	2018-01-15	ISSUED FOR PERMITS
89	2018-01-15	ISSUED FOR PERMITS
90	2018-01-15	ISSUED FOR PERMITS
91	2018-01-15	ISSUED FOR PERMITS
92	2018-01-15	ISSUED FOR PERMITS
93	2018-01-15	ISSUED FOR PERMITS
94	2018-01-15	ISSUED FOR PERMITS
95	2018-01-15	ISSUED FOR PERMITS
96	2018-01-15	ISSUED FOR PERMITS
97	2018-01-15	ISSUED FOR PERMITS
98	2018-01-15	ISSUED FOR PERMITS
99	2018-01-15	ISSUED FOR PERMITS
100	2018-01-15	ISSUED FOR PERMITS

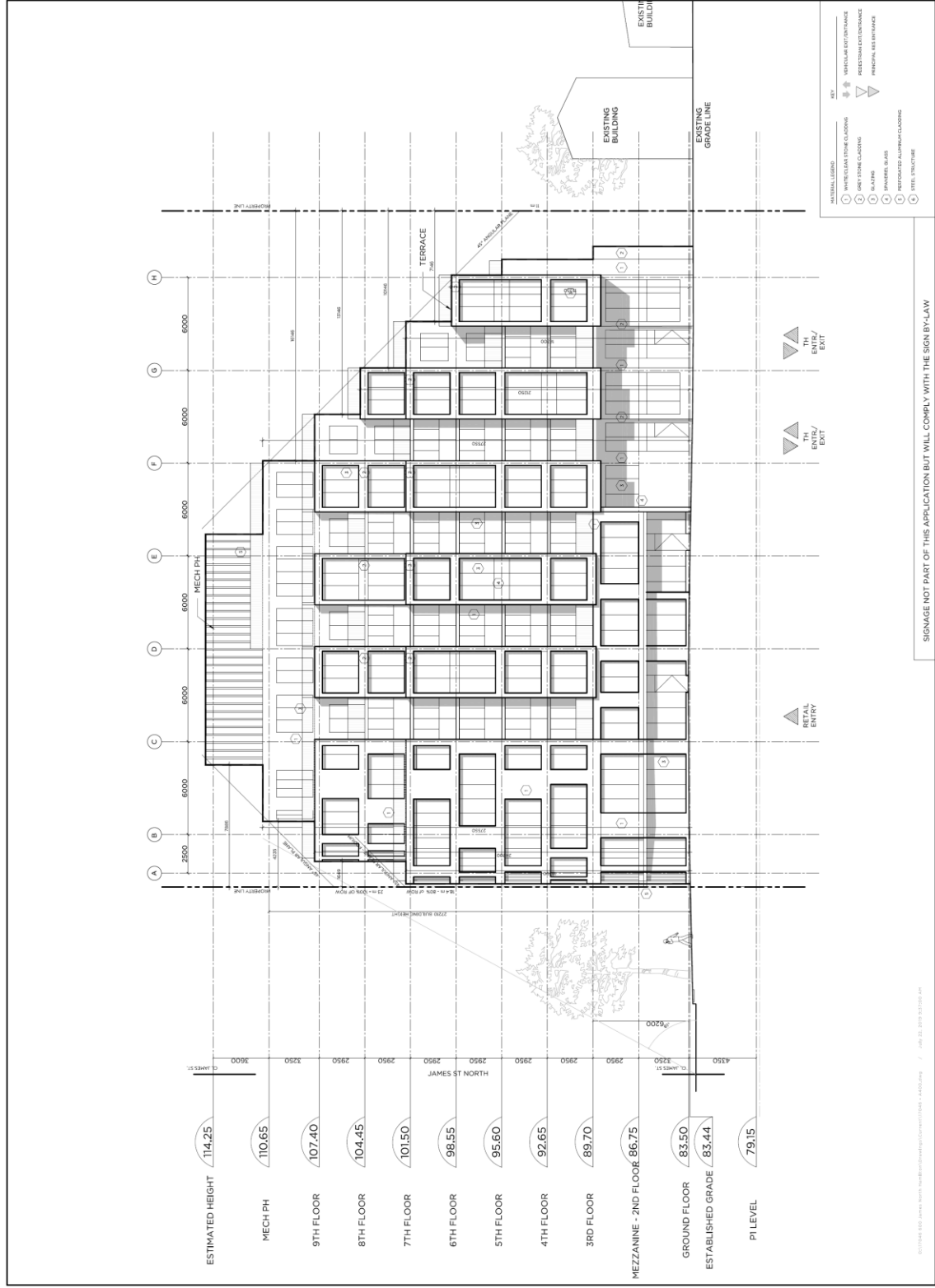
**REVISION RECORD**



**RAW**  
REGISTERED ARCHITECTS  
402-377-4242 / 402-377-4243  
1100 SOUTH BROADWAY, SUITE 100  
DENVER, CO 80202

**MIXED USE**  
17046  
400 JAMES ST. NORTH  
HAMILTON, ON  
PINEMOUNT HOLDINGS LTD.

**ELEVATIONS SOUTH**  
1:100  
**A402**



DATE: 2018-01-15 10:00 AM  
DRAWN: [Name]  
CHECKED: [Name]  
SCALE: 1/8" = 1'-0"



**REVISION RECORD**

2018-01-15	REVISED FOR RECORD
2018-01-15	REVISED FOR RECORD
2018-01-15	REVISED FOR RECORD
2018-01-15	REVISED FOR RECORD
2018-01-15	REVISED FOR RECORD

**REVISION RECORD**



**RAW**  
REGISTERED ARCHITECT  
4050 DE LA GALAIS STREET, WEST  
SUITE 200, NEW ORLEANS, LA 70119  
PHONE: 504.586.2200 FAX: 504.586.2201

T7046  
MIXED USE  
600 JAMES ST. NORTH  
HAMILTON, ON  
PINEMOUNT  
HOLDINGS LTD.

ELEVATIONS  
EAST

1:100

A404

