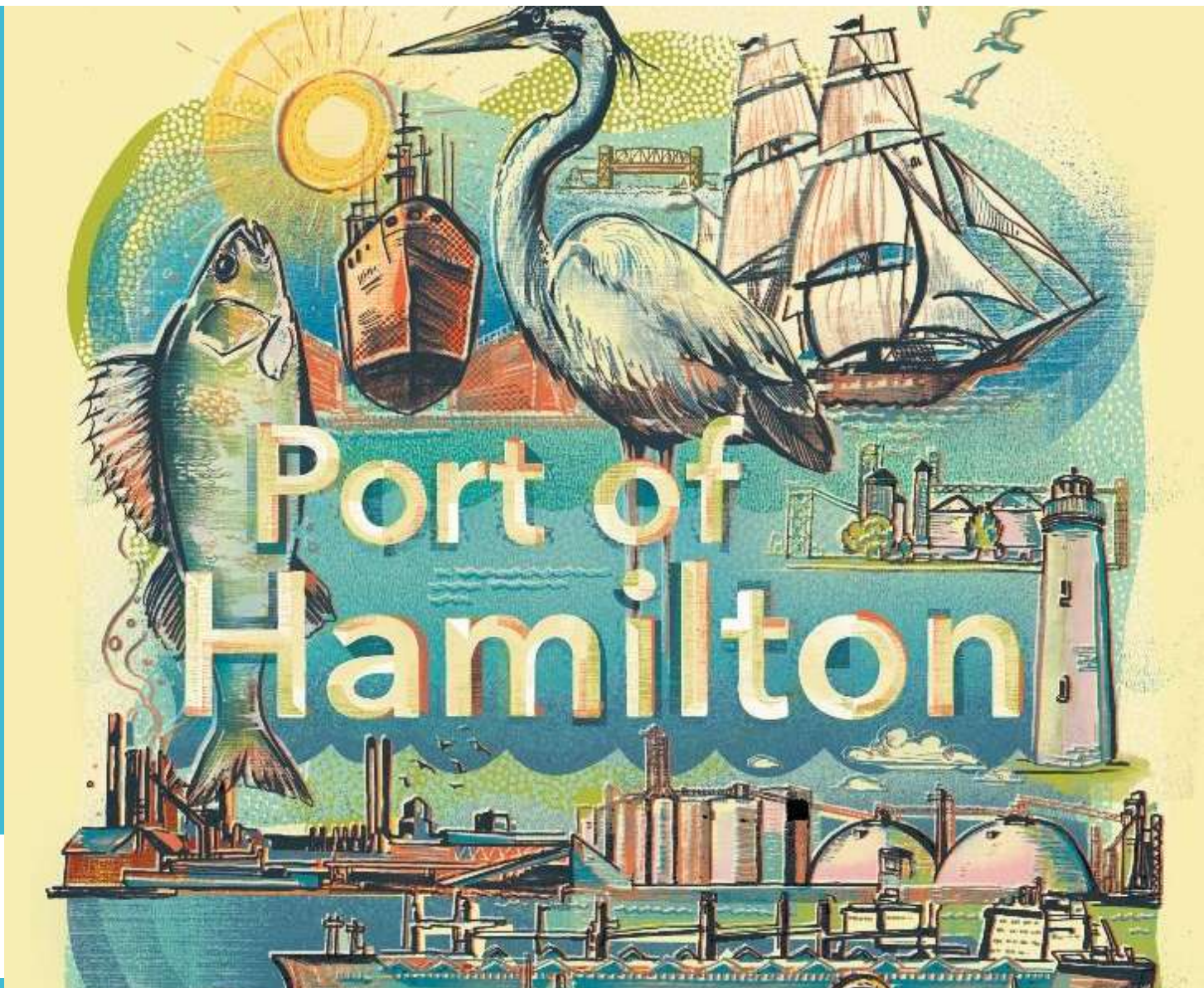


2019
Report to
City of
Hamilton
General Issues
Committee

HAMILTON-OSHAWA
PORT AUTHORITY

Administration Portuaire de Hamilton-Oshawa



Celebrating
our
Port City

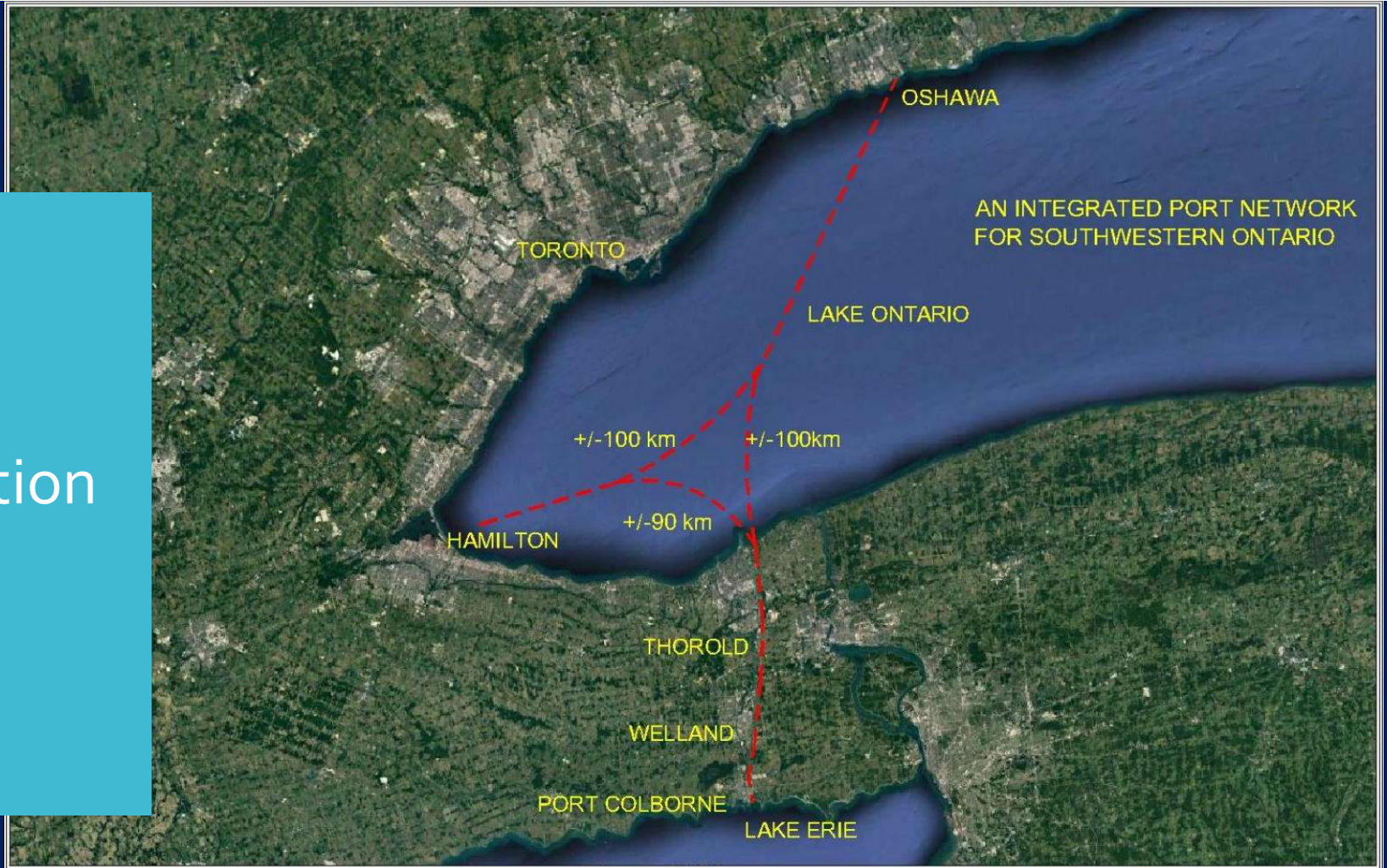


Vision

Create and lead an
integrated port network
on the Great Lakes



Port Amalgamation

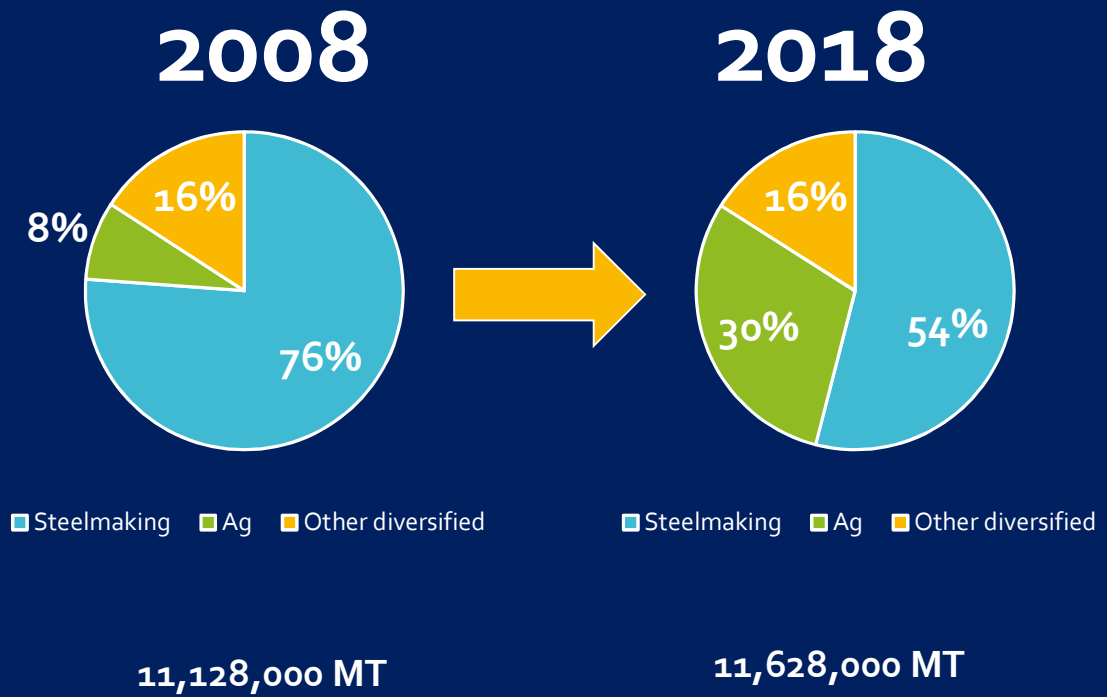


Reflecting
a Diverse
Economy

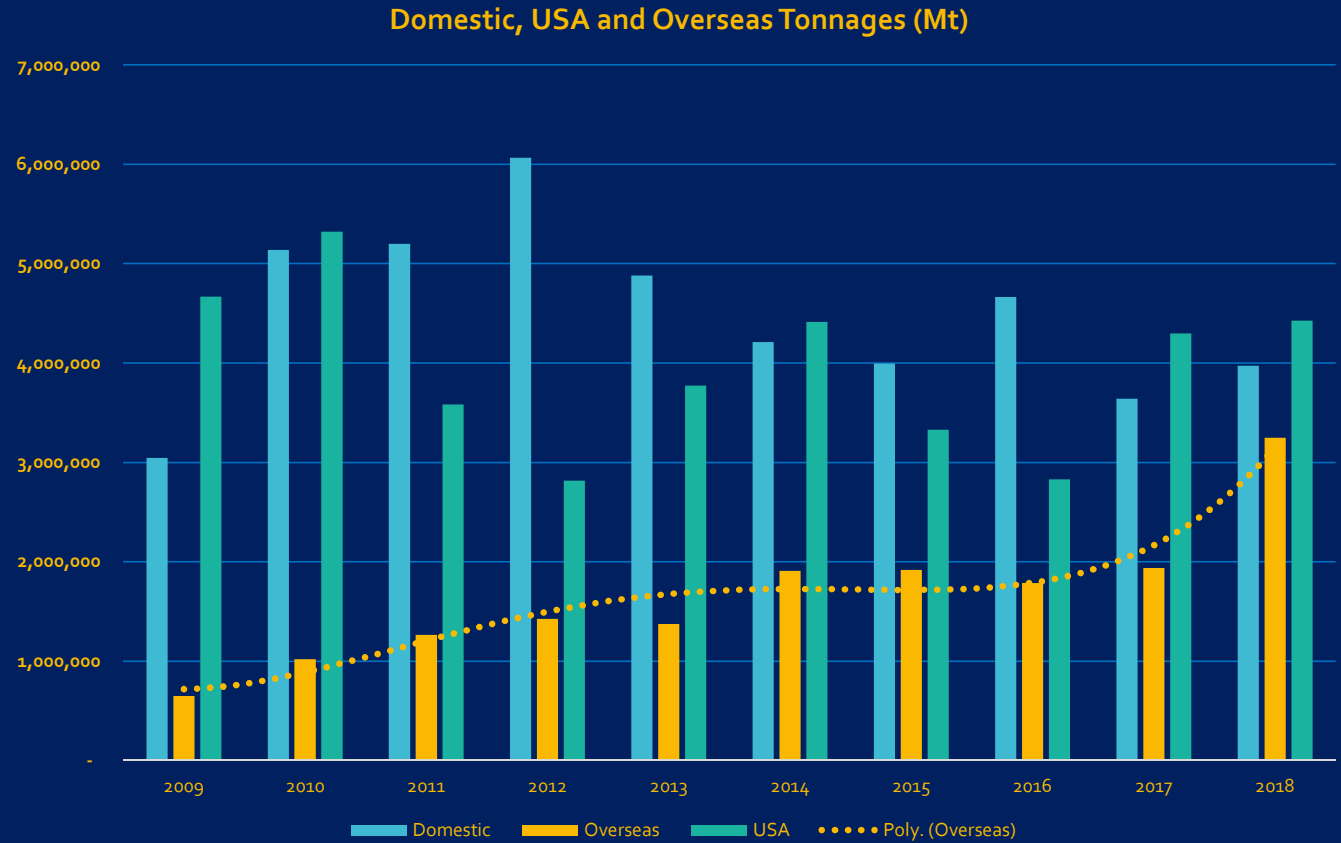
Cargo Tonnages (Mt)



Diversification



More Overseas Cargo



Infrastructure Reinvestment



**\$20-\$25 million
each year / next 3 years**

Economic Development Sector Alignment



Agri-food: P&H Flour Mill



Agri-food: SucroCan



Manufacturing



Goods Movement



Foreign Trade Zone
Hamilton

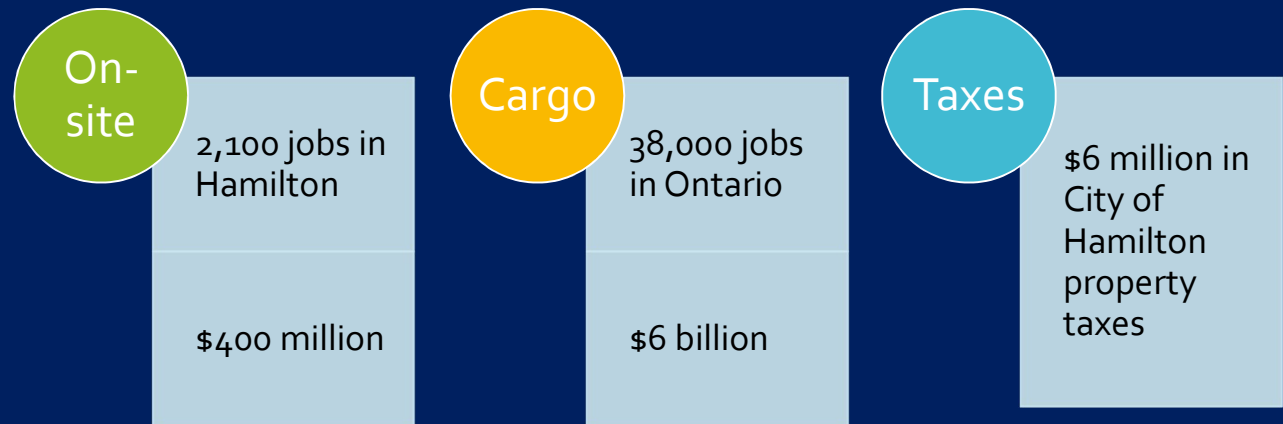
Pier 10 Agri-Food Hub



Westport Modernization



Economic Impact

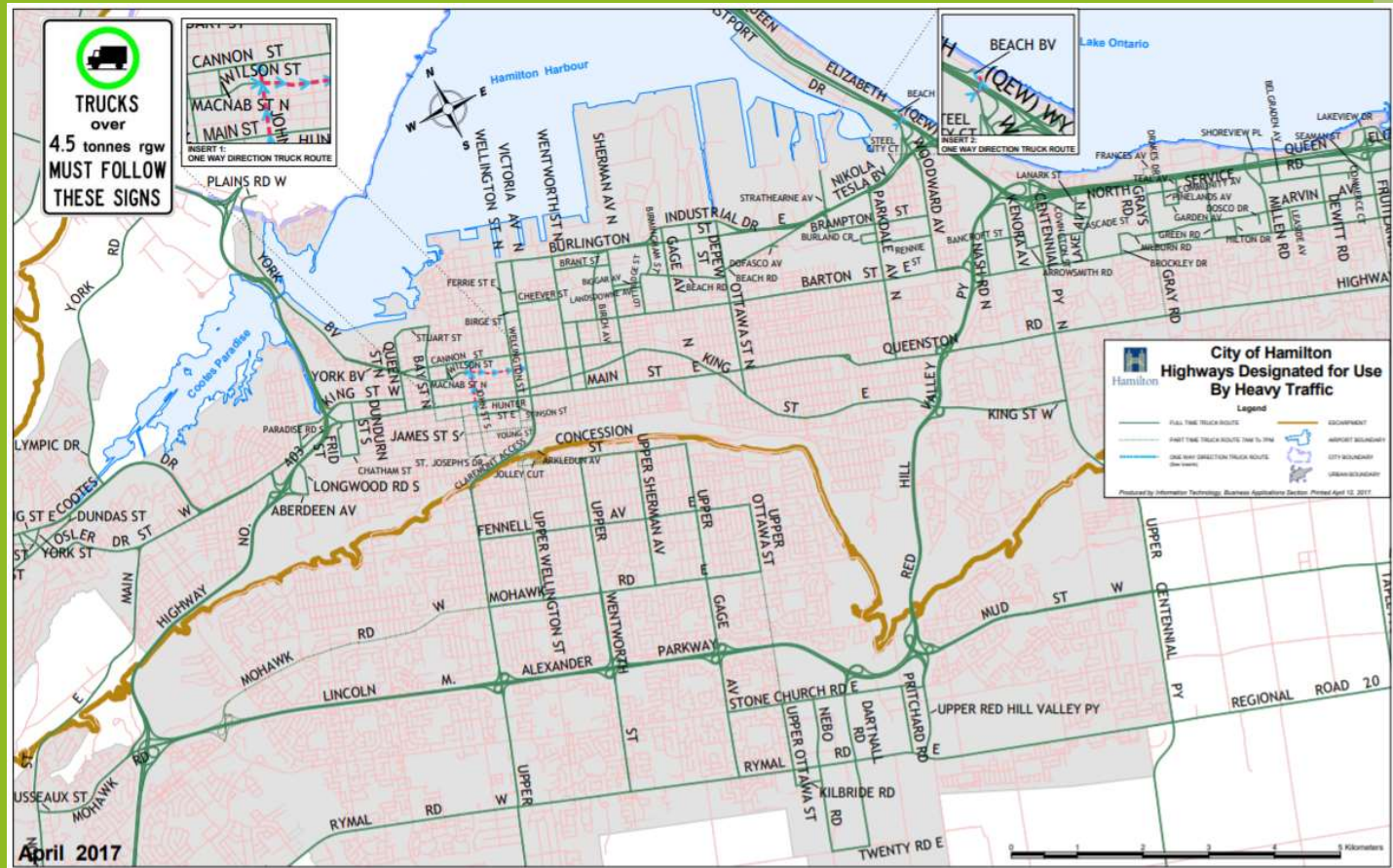


Environmental Initiatives



Truck Route Review :

An Opportunity to Improve Neighborhood Interface



A Vision for Fisherman's Pier

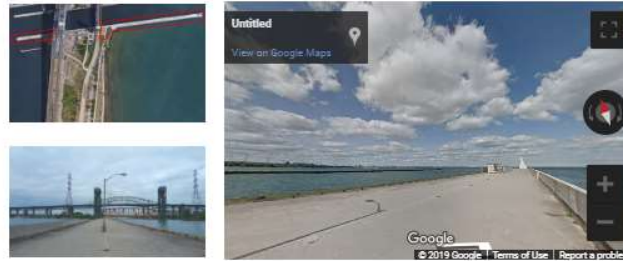


Plan local Fisherman's Pier

1. Breakwater Pier

This Pier marks the entrance to Hamilton Harbour and extends into Lake Ontario. The Pier is walkable and provides great views of the Lake, Hamilton Harbour, Burlington and the Skyway Bridge. Take a virtual stroll through the interactive view below and discover the Pier. Below that, review some suggested types of improvements, and select those you would like to see for this area.

Take a Virtual Tour



Types of Improvements

There are a variety of improvements that could be made to the Breakwater Pier. The following three design concepts from other places are examples of improvements that could happen here. Tell us what you think about the following options by selecting a 'thumbs up' or 'thumbs down' for each. When you finished [click next below to continue](#).

Pedestrianized Pier



South Pointe Park Pier, Miami Beach, USA
In this concept, the space is updated with elements such as seating, railings, and sun/shade structures to create a better pedestrian environment.

Do you like this concept for the Breakwater Pier?



Animated Pier

Landscape Pier



East Waterfront Park, Baltimore, USA
In this concept, the space is reimagined as a more naturalized space, including elements such as plant material and trees, rocks, seating and sun/wind shelters, as well as different types of path surfaces, from wood boards, to concrete areas and paving stones.

Do you like this concept for the Breakwater Pier?



Plan local Fisherman's Pier

2. Eastport Park

This area is the southern gateway to the Fisherman's Pier area. It mainly consists of unmaintained, inaccessible green space extending from the shore of Hamilton Harbour, underneath the Skyway Bridge, to Eastport Drive. This zone also includes a seasonal boat storage area. Views under the bridge, through to the harbour, are largely unobstructed and the sidewalk along Eastport Drive provides the potential for a significant, accessible interface to the site. Take a stroll through the interactive view below and discover this area. After that, review the concepts for this area and select which one you would like to see for this area.

Take a Virtual Tour



Types of Improvements

There are a variety of improvements that could be made to the Eastport Park area. The following four design concepts from other places are examples of improvements that could happen here. Tell us which concepts you like or dislike by selecting a 'thumbs up' or 'thumbs down' for each, then prioritize what concepts you would like to see in this space. When you finished [click next below to continue](#).

Urban Beach



Village au Pied-du-Courant, Montreal, Canada
In this concept, the space would be transformed into a temporary beach area, including beach huts and shade structures that line the waterfront corridor. Ample seating, sun bathing, wooden boardwalk and sand contribute to the urban beach feel.

Do you like this concept for Eastport Park?



Flexible Open Space



San Diego County Waterfront Park, San Diego, USA
In this concept, the space would be reworked as an open green space park that includes grass lawns, paved sidewalks, seating and lighting. Fountains and a wading area could border the large open green space, which can be used to host temporary events or festivals.

Do you like this concept for Eastport Park?



A Vision for
Fisherman's
Pier



Things to work on together



Attract investment & jobs



Pier 10 redevelopment



Dredging at Pier 22



Settlement Agreement



Truck Route Review



Fisherman's Pier

