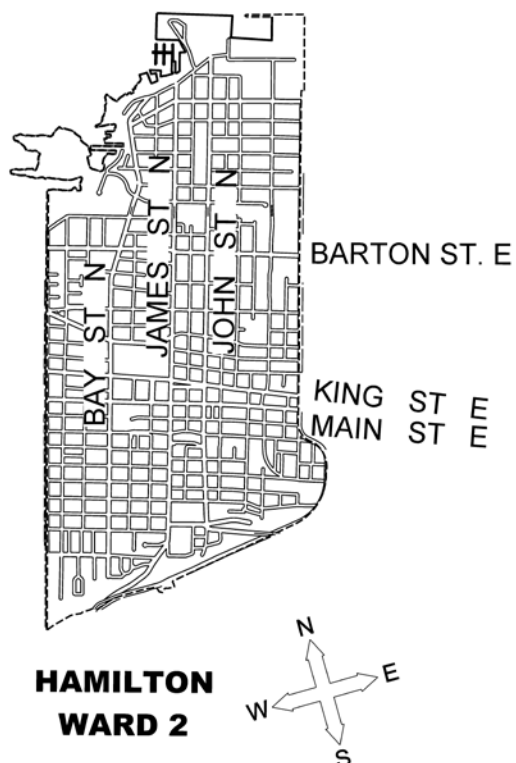


### KEY MAP



### LOCATION PLAN

*PROPOSED STOP CONTROL:*

**Queen Street at Aberdeen Avenue**

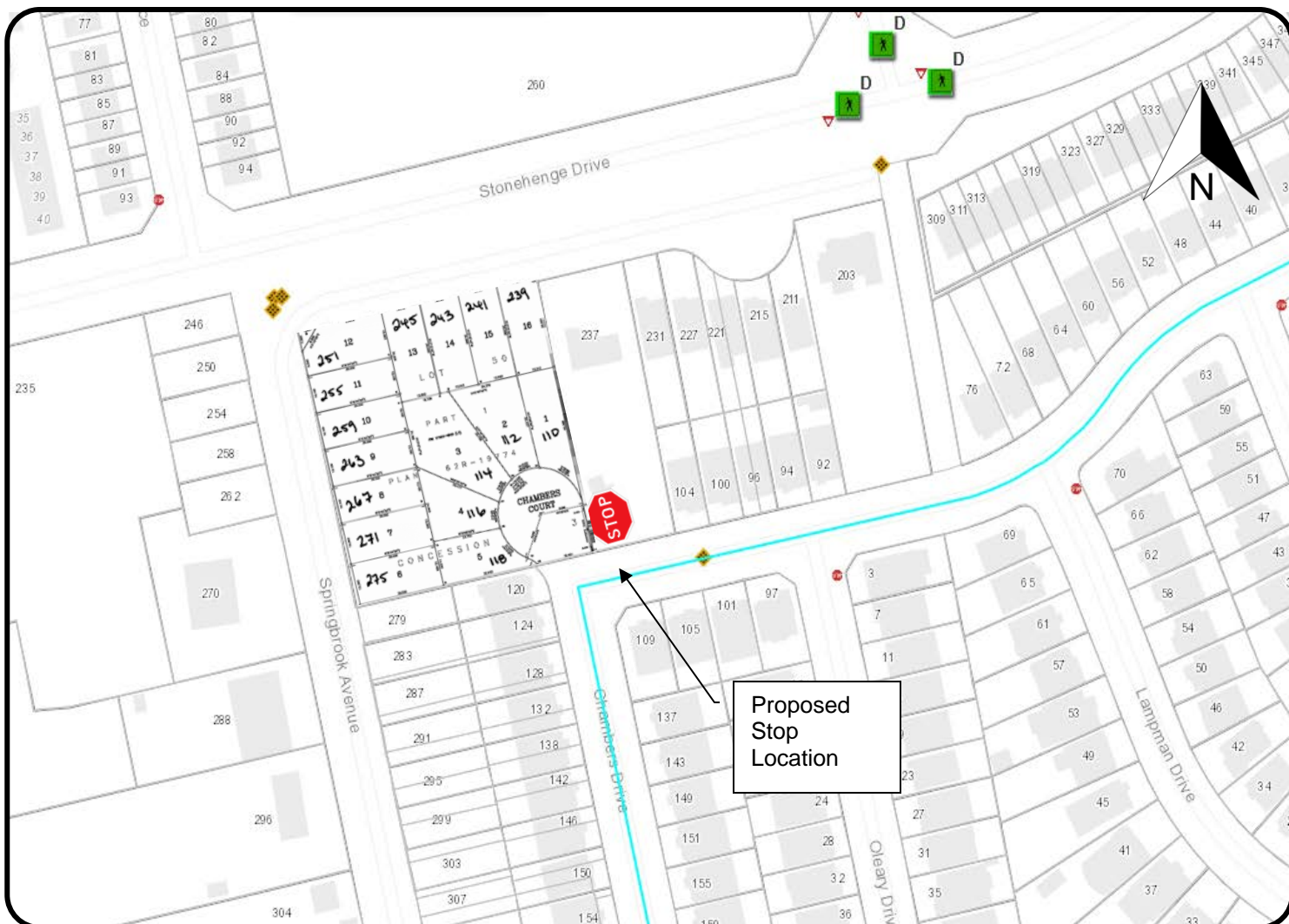
Transportation Operations and Maintenance  
PUBLIC WORKS DEPARTMENT

### LEGEND

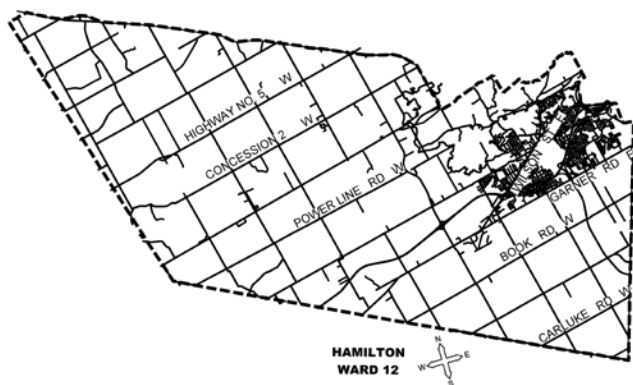
- EXISTING STOP
- STOP PROPOSED STOP

SCALE  
**NOT TO SCALE**

DATE  
**November 4, 2019**



### KEY MAP



### LOCATION PLAN

*PROPOSED STOP CONTROL:*

**Chambers Drive at Chambers Court**

Transportation Operations and Maintenance  
PUBLIC WORKS DEPARTMENT

### LEGEND

- EXISTING STOP
- STOP PROPOSED STOP

SCALE  
**NOT TO SCALE**

DATE  
**November 4, 2019**



### KEY MAP



### LOCATION PLAN

*PROPOSED STOP CONTROL:*

**York Road at Fieldgate Street**

Transportation Operations and Maintenance  
PUBLIC WORKS DEPARTMENT

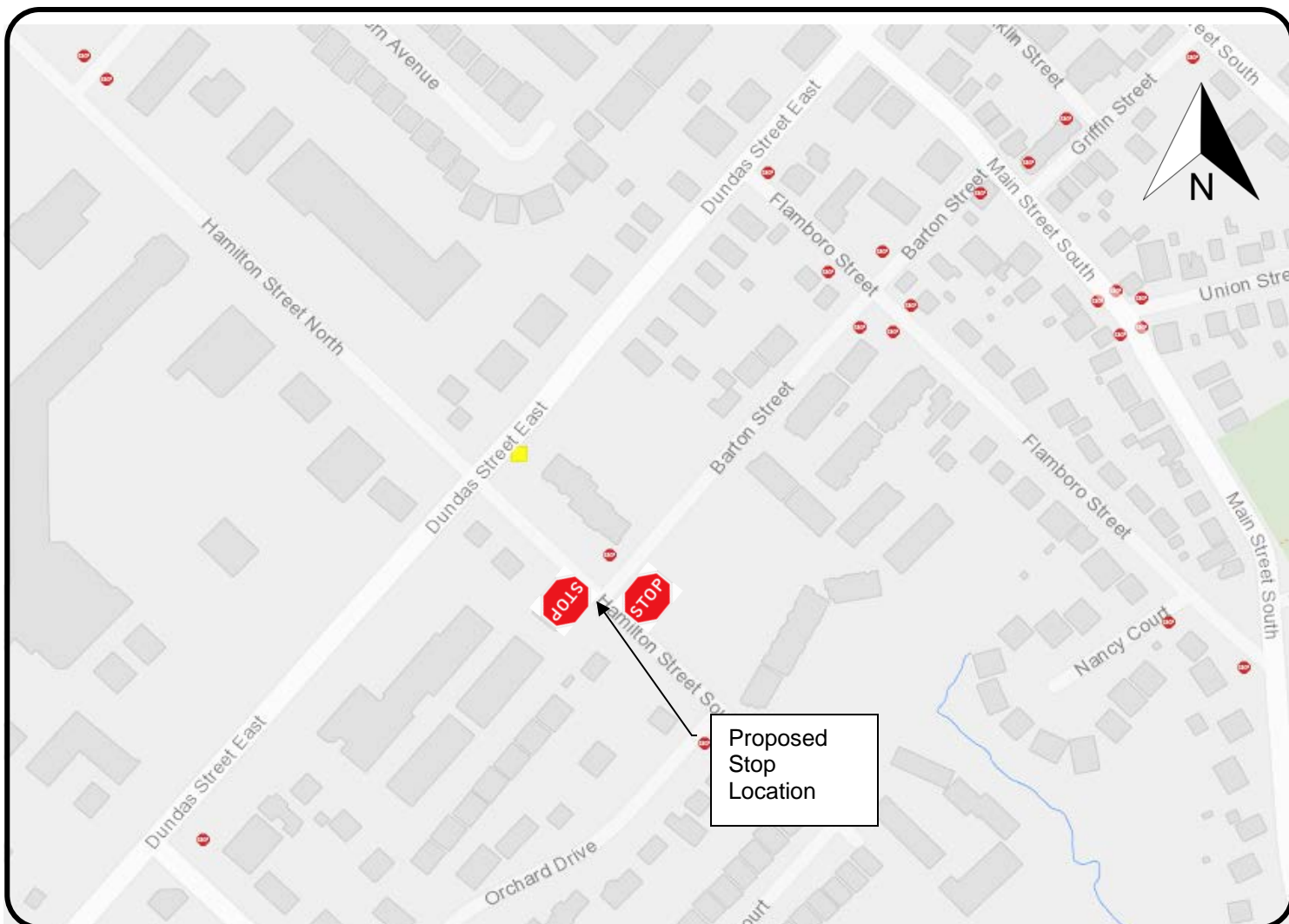
### LEGEND

- EXISTING STOP
- STOP PROPOSED STOP

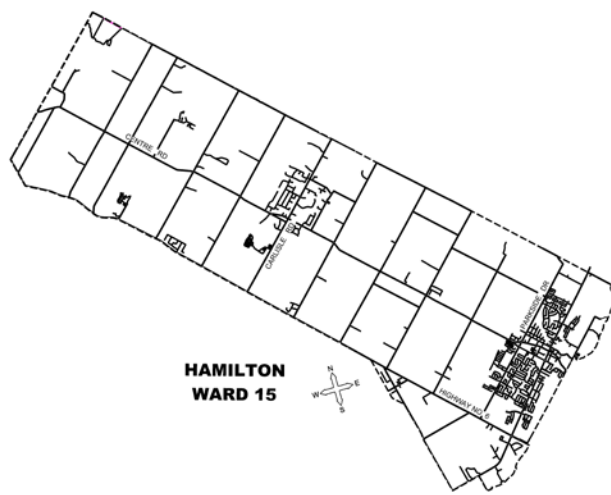
SCALE  
**NOT TO SCALE**

DATE  
**November 4, 2019**





### KEY MAP




### LOCATION PLAN

*PROPOSED STOP CONTROL:*

**Hamilton Street at Barton Street**

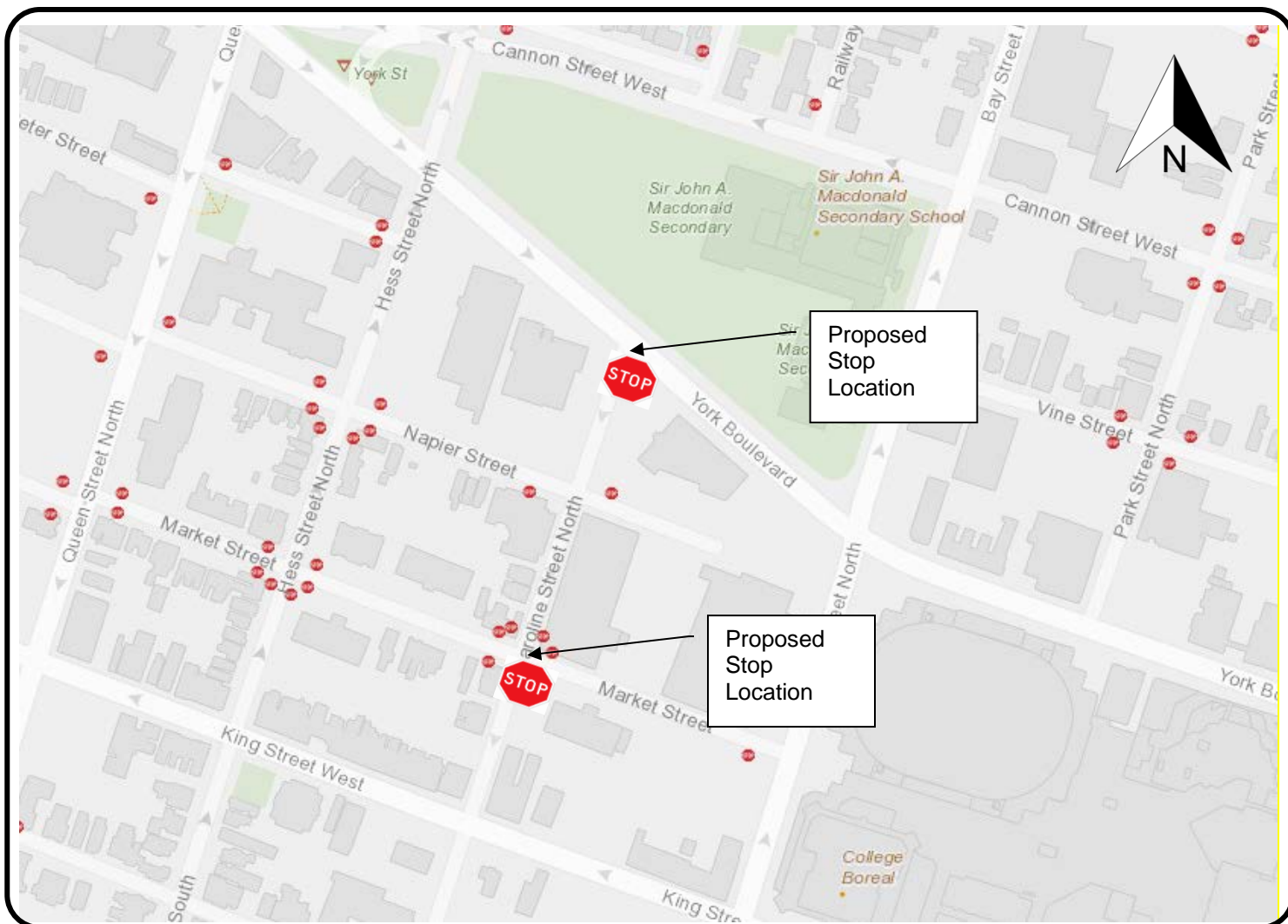
Transportation Operations and Maintenance  
PUBLIC WORKS DEPARTMENT

### LEGEND

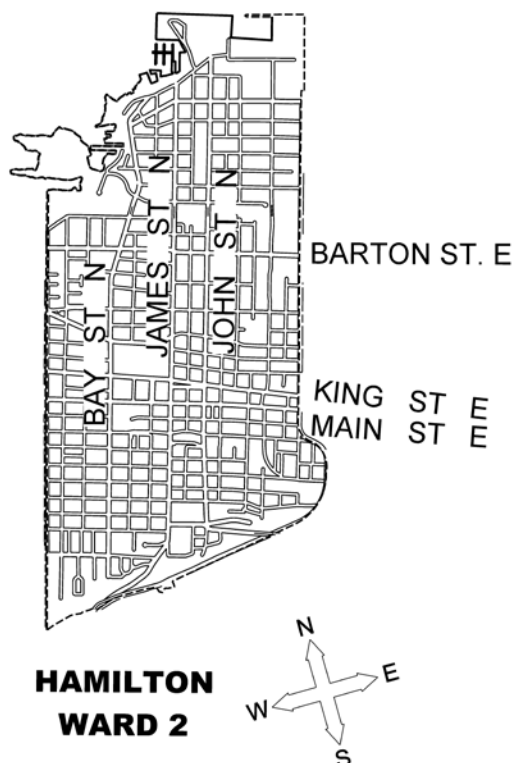
- EXISTING STOP
-  PROPOSED STOP

SCALE  
**NOT TO SCALE**

DATE  
**November 4, 2019**



### KEY MAP



### LOCATION PLAN

#### PROPOSED STOP CONTROL:

**Caroline Street at York Boulevard  
Caroline Street at Market Street**

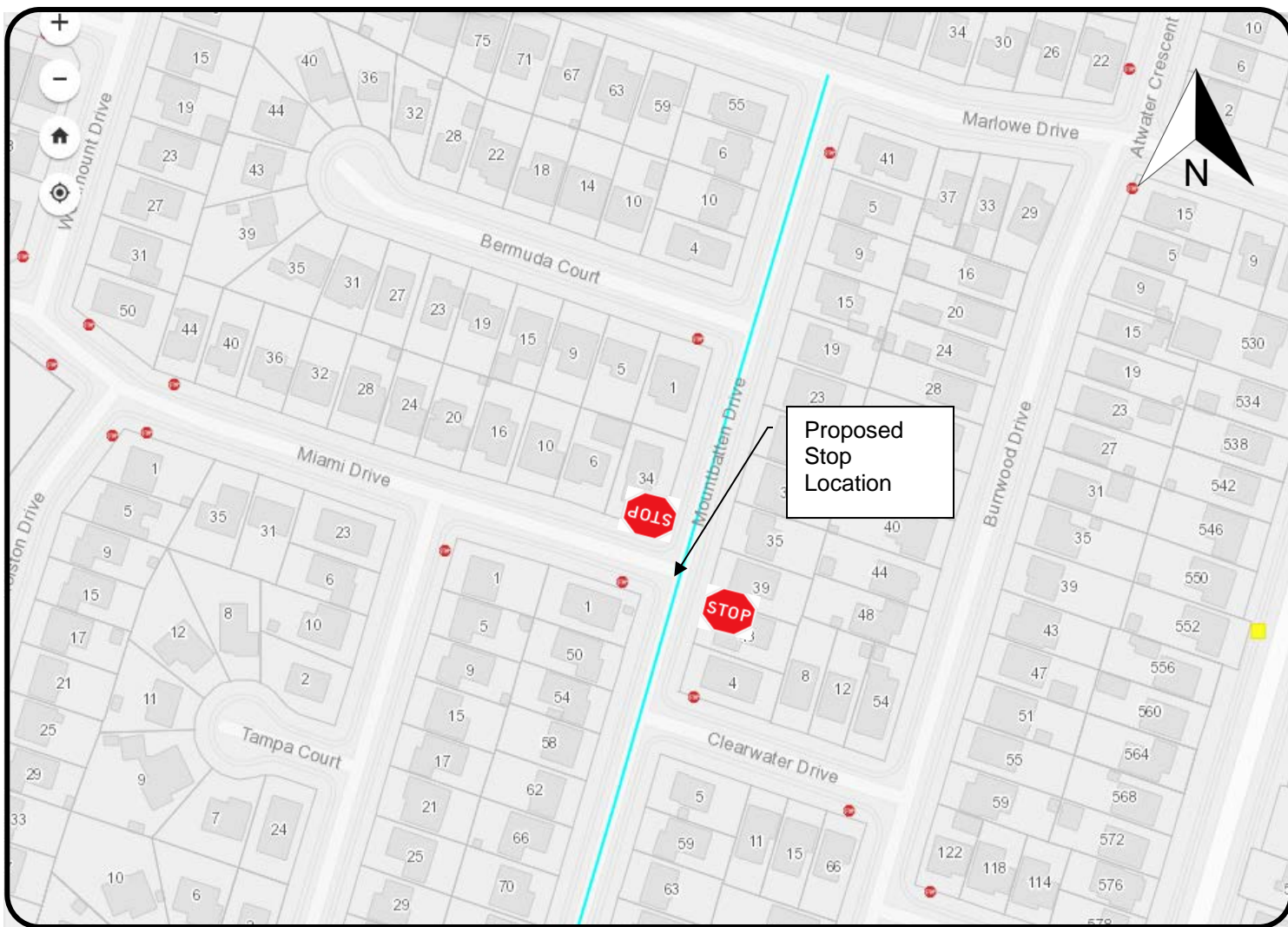
Transportation Operations and Maintenance  
PUBLIC WORKS DEPARTMENT

### LEGEND

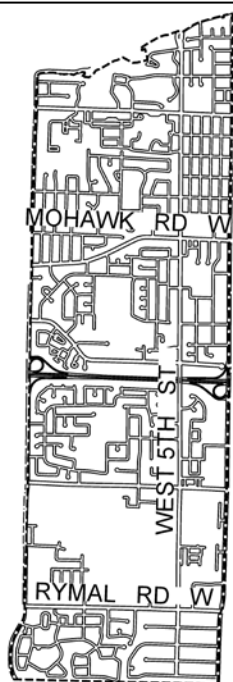
- EXISTING STOP
- STOP PROPOSED STOP

SCALE  
**NOT TO SCALE**

DATE  
**November 4, 2019**



### KEY MAP



**HAMILTON  
WARD 8**



### LOCATION PLAN

*PROPOSED STOP CONTROL:*

**Mountbatten Drive at Miami Drive**

Transportation Operations and Maintenance  
PUBLIC WORKS DEPARTMENT

### LEGEND

- EXISTING STOP
- STOP PROPOSED STOP

SCALE  
**NOT TO SCALE**

DATE  
**November 4, 2019**