



feasibility study report sackville hill senior's centre expansion

780 UPPER WENTWORTH STREET, HAMILTON

AUGUST 9, 2019



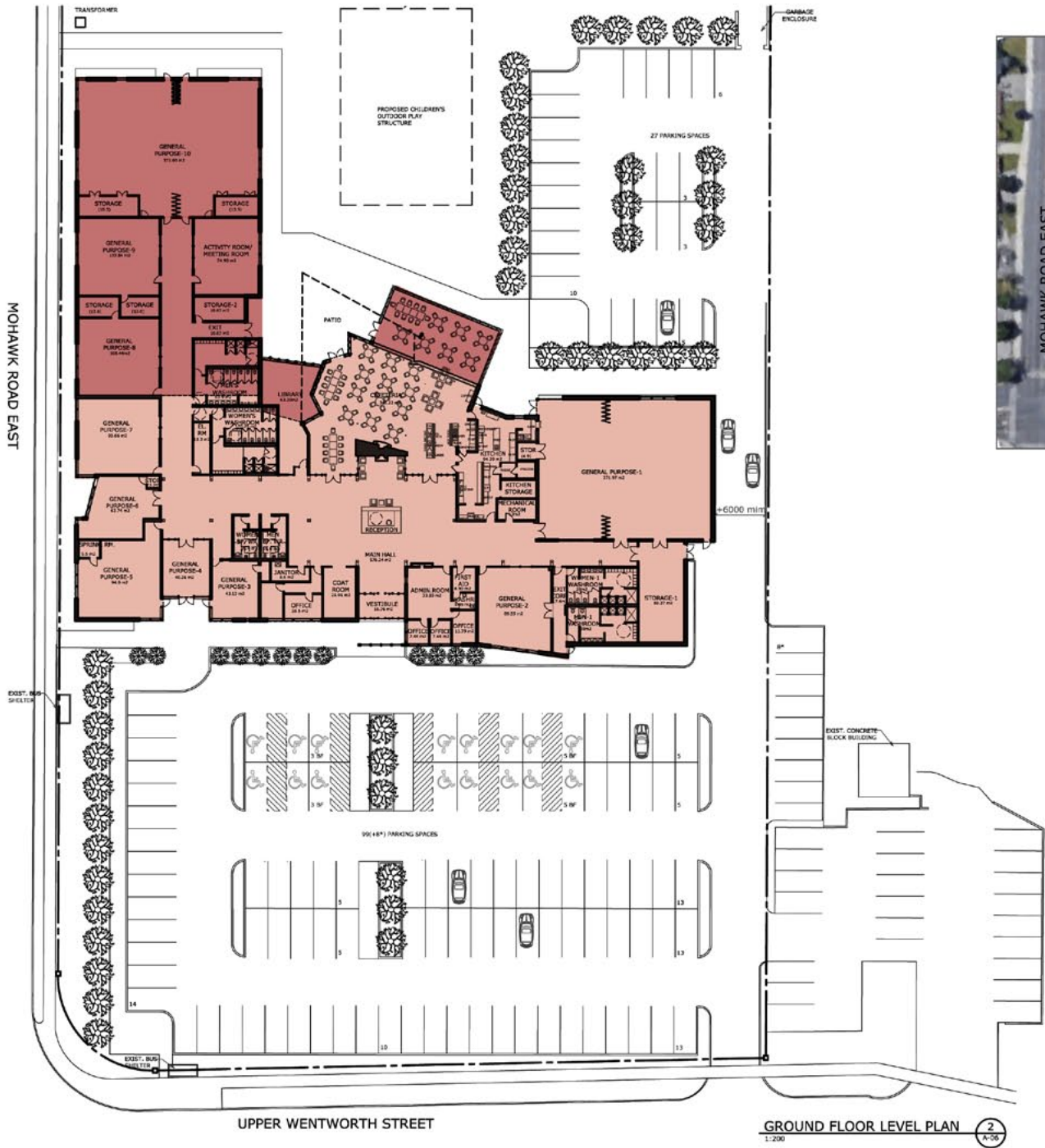
PRESENTED BY: STRASMAN ARCHITECTS INC.

sai

05

recommended option

SITE PLAN WITH PARKING



CONTEXT PLAN 1
N.T.S.

SITE STATISTICS	
SITE AREA:	13087.45sm
BUILDING FOOTPRINT:	3300.23 sm
Exsitng:	2302 sm
Addition:	998.23 sm
PARKING REQ'D:	110 Spaces
PARKING PROVIDED:	126 Spacesc 134 incl. 8 on Adjacent Property)

LEGEND	
	EXISTING
	PROPOSED ADDITION

recommended option 05



interior rendering 07

3D VIEW

