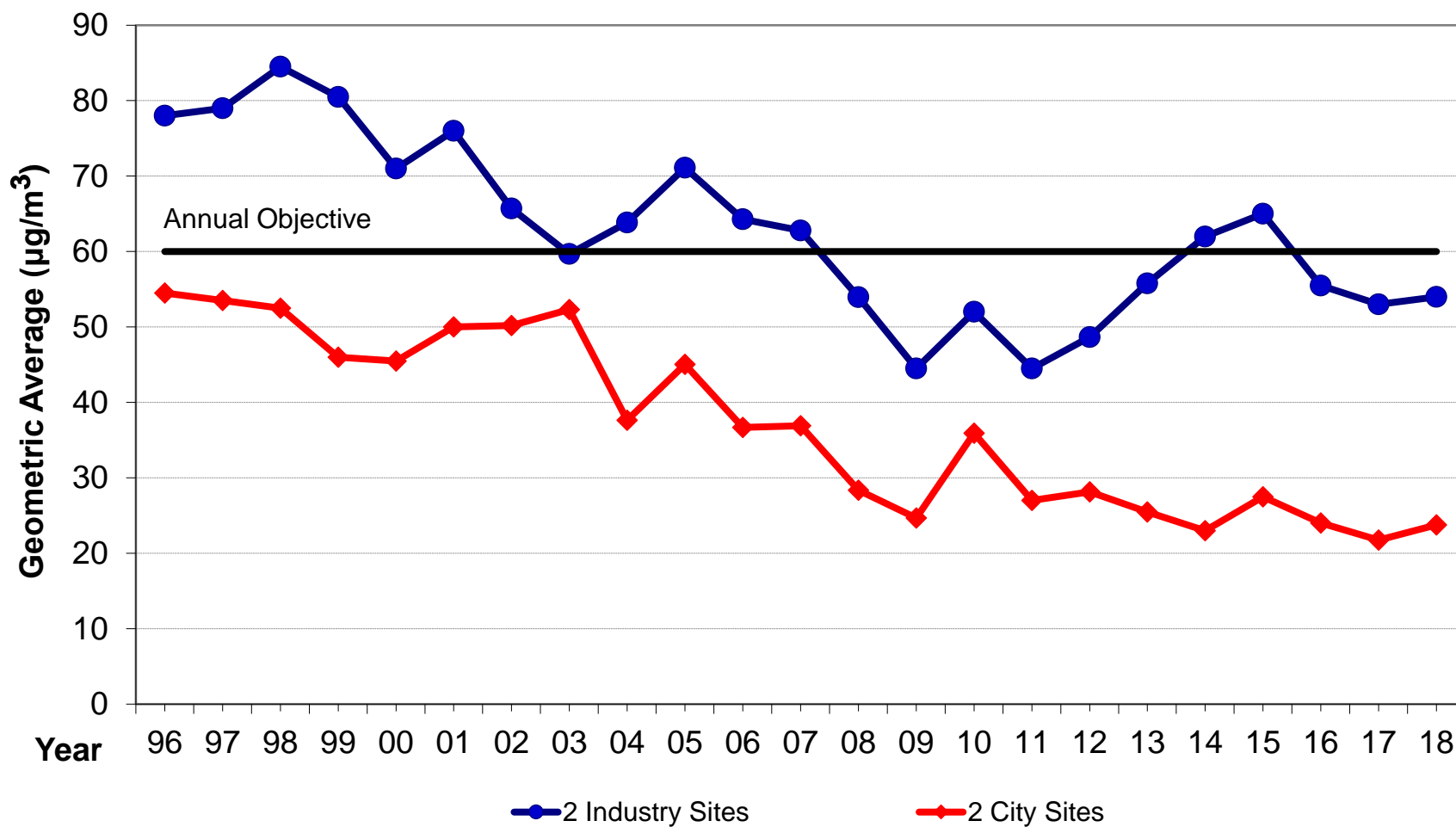
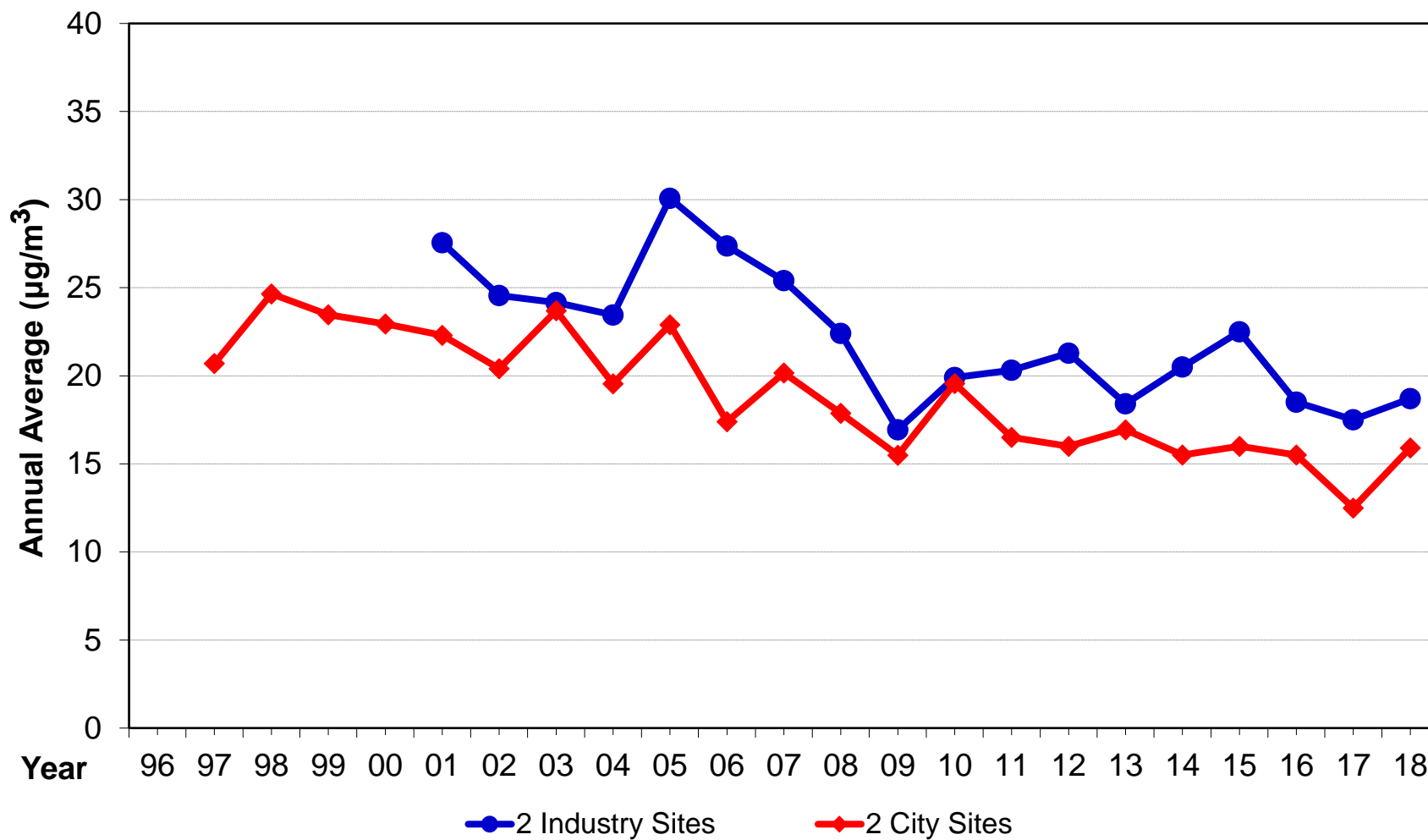


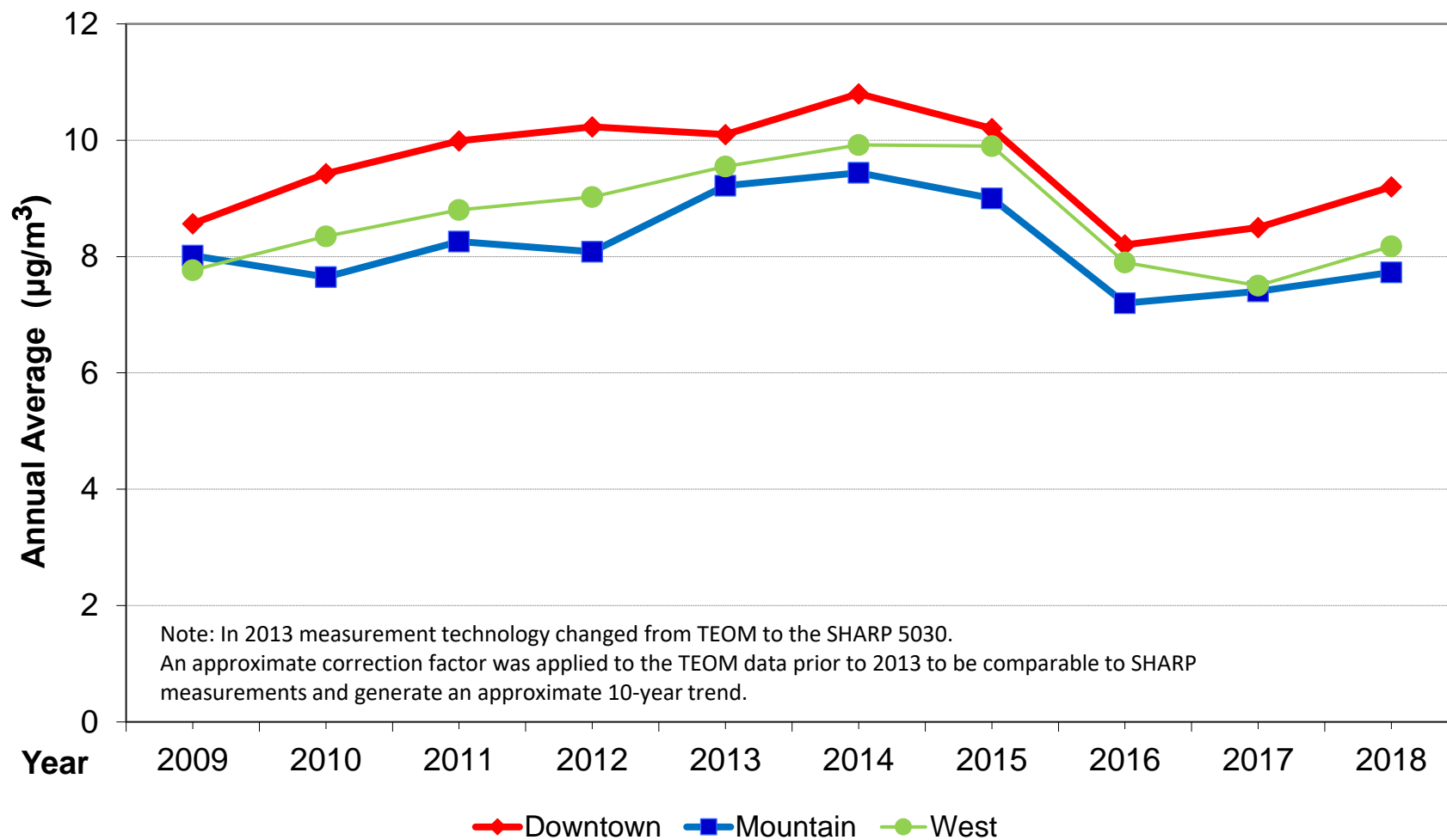
## Total Suspended Particulate (TSP) Trend



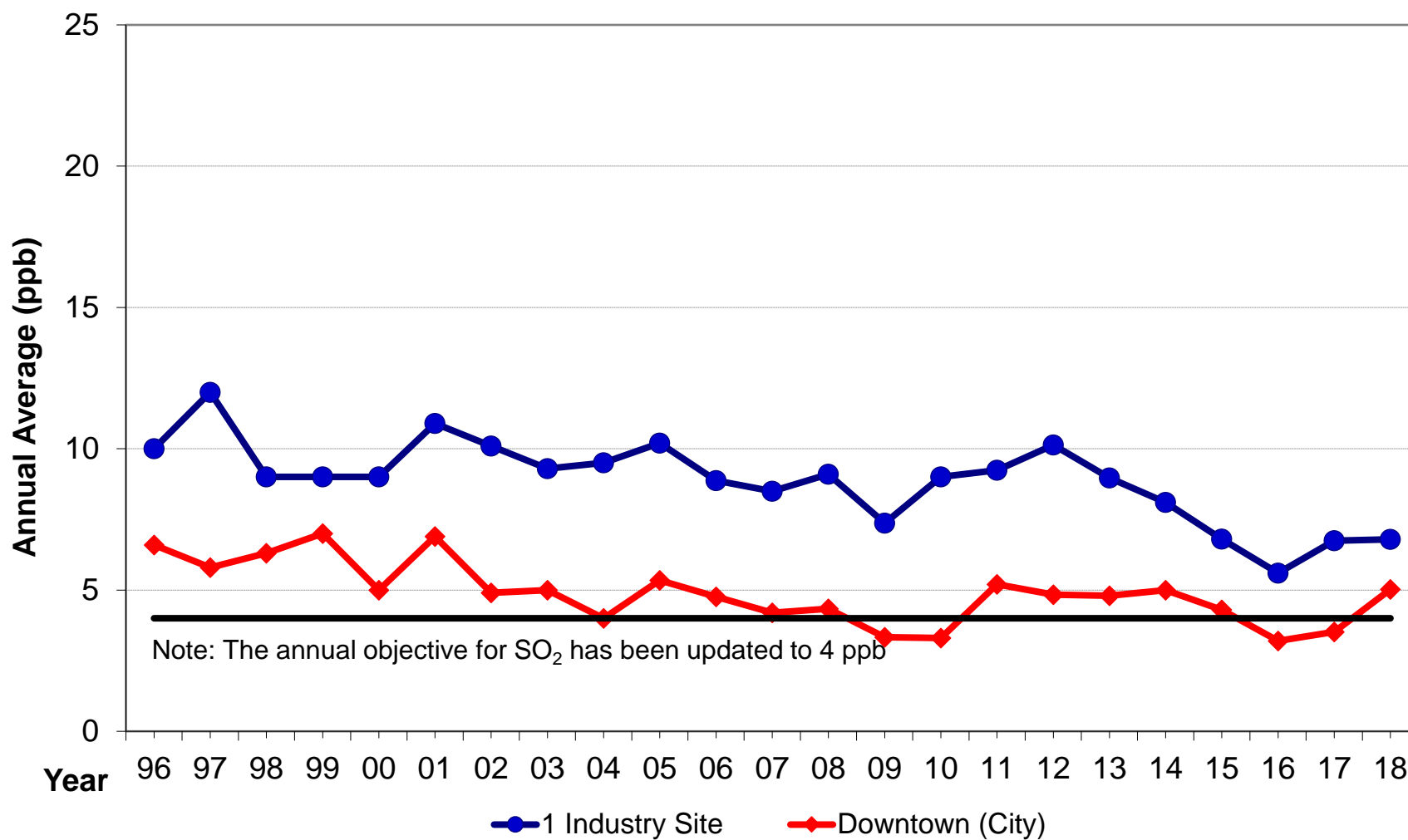
### Inhalable Particulate (PM<sub>10</sub>) Trend



## Respirable Particulate (PM<sub>2.5</sub>) Trend

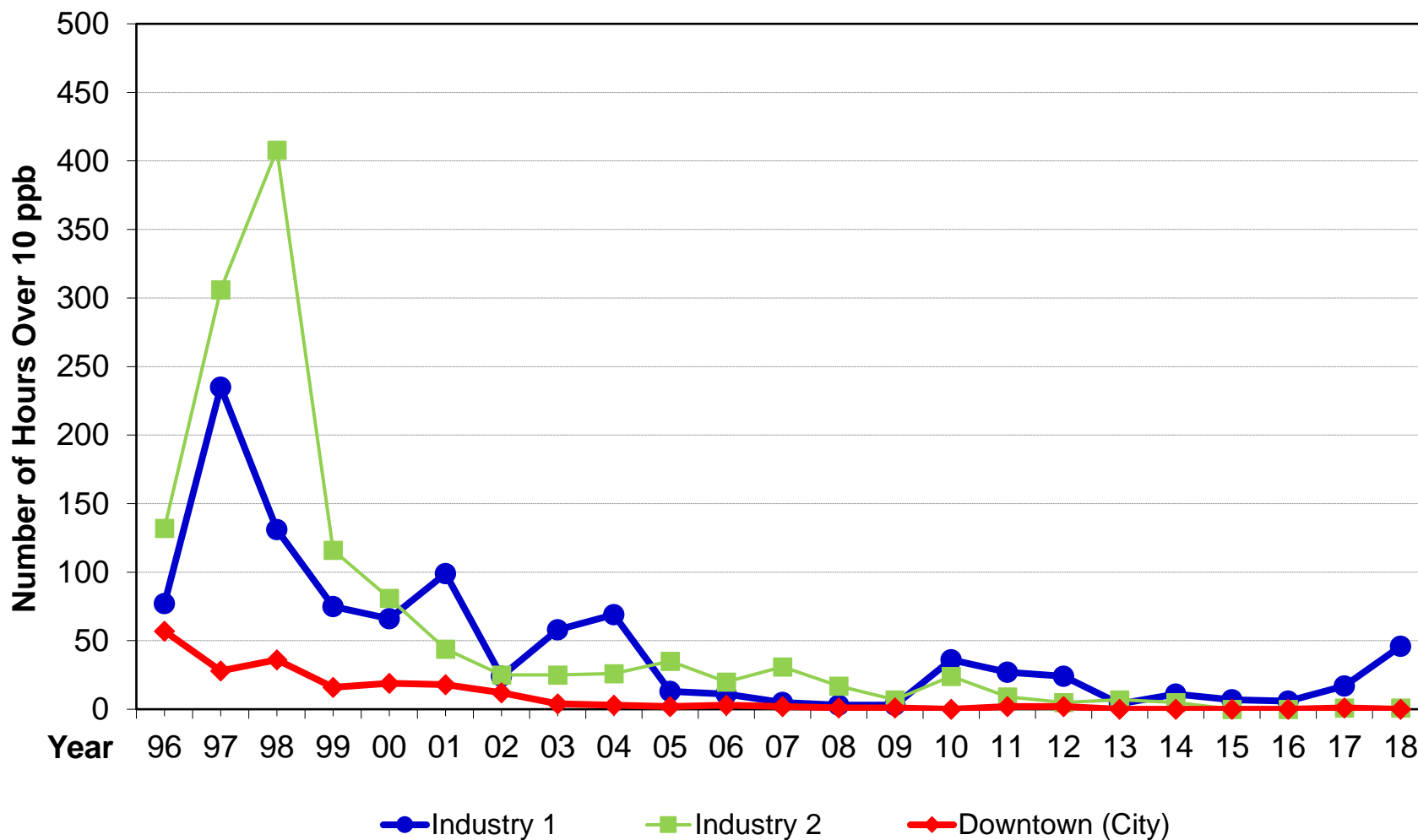


## Sulphur Dioxide Trend

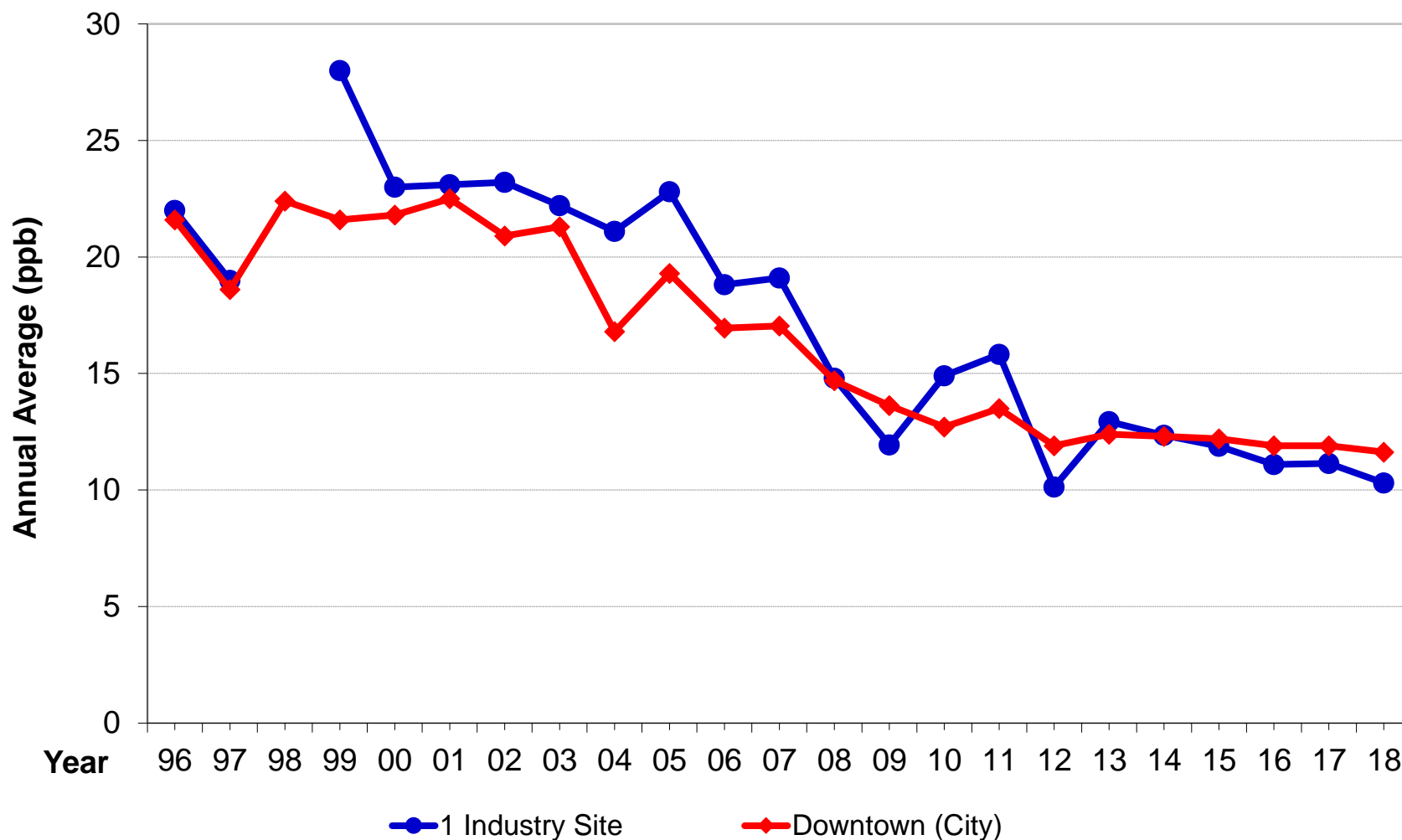


## Total Reduced Sulphur Trend

Hours Over 10 ppb Odour Threshold



## Nitrogen Dioxide Trend

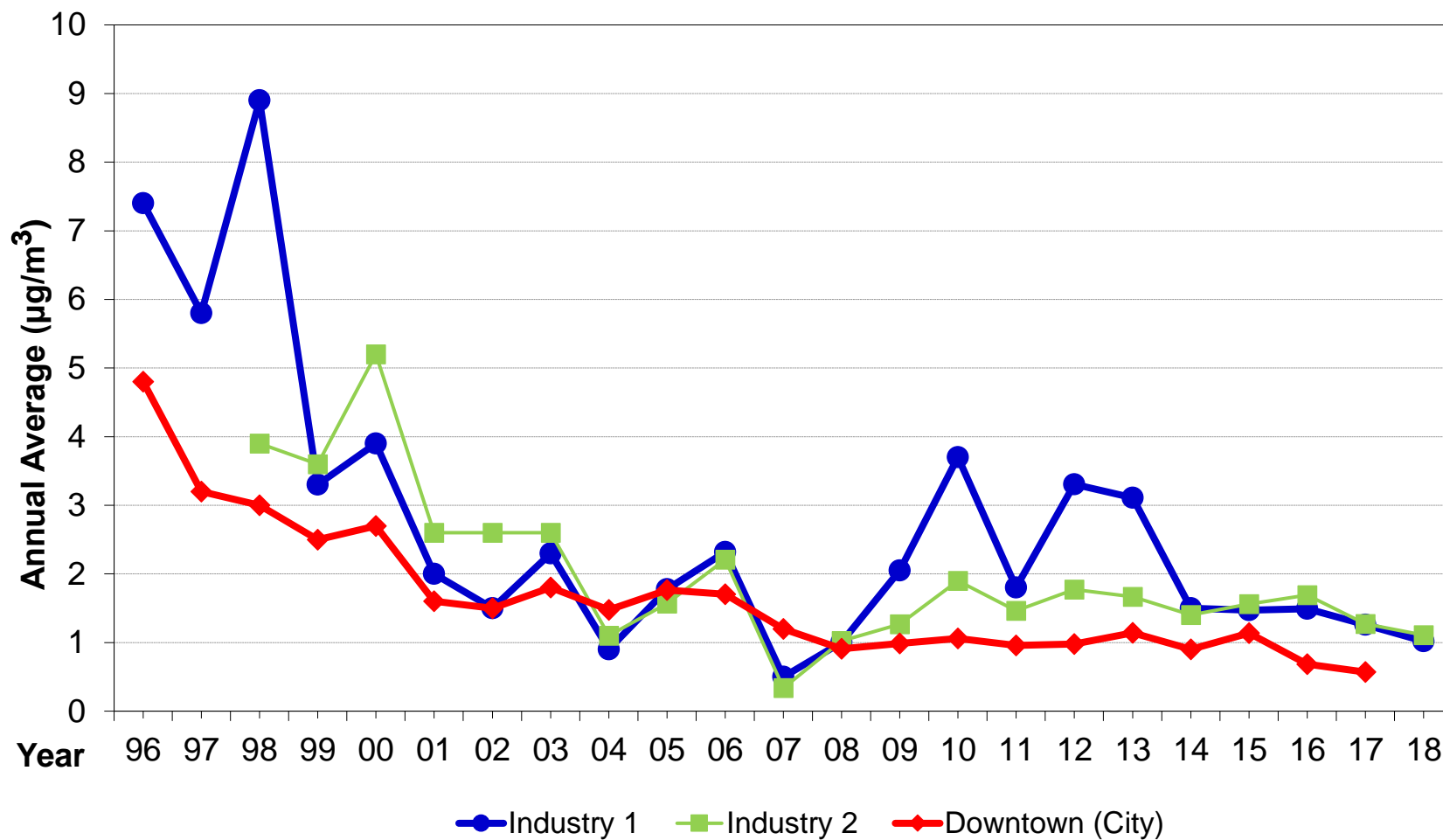


## Ground Level Ozone Trend

Number of Hourly Exceeds >50 ppb 3 station average

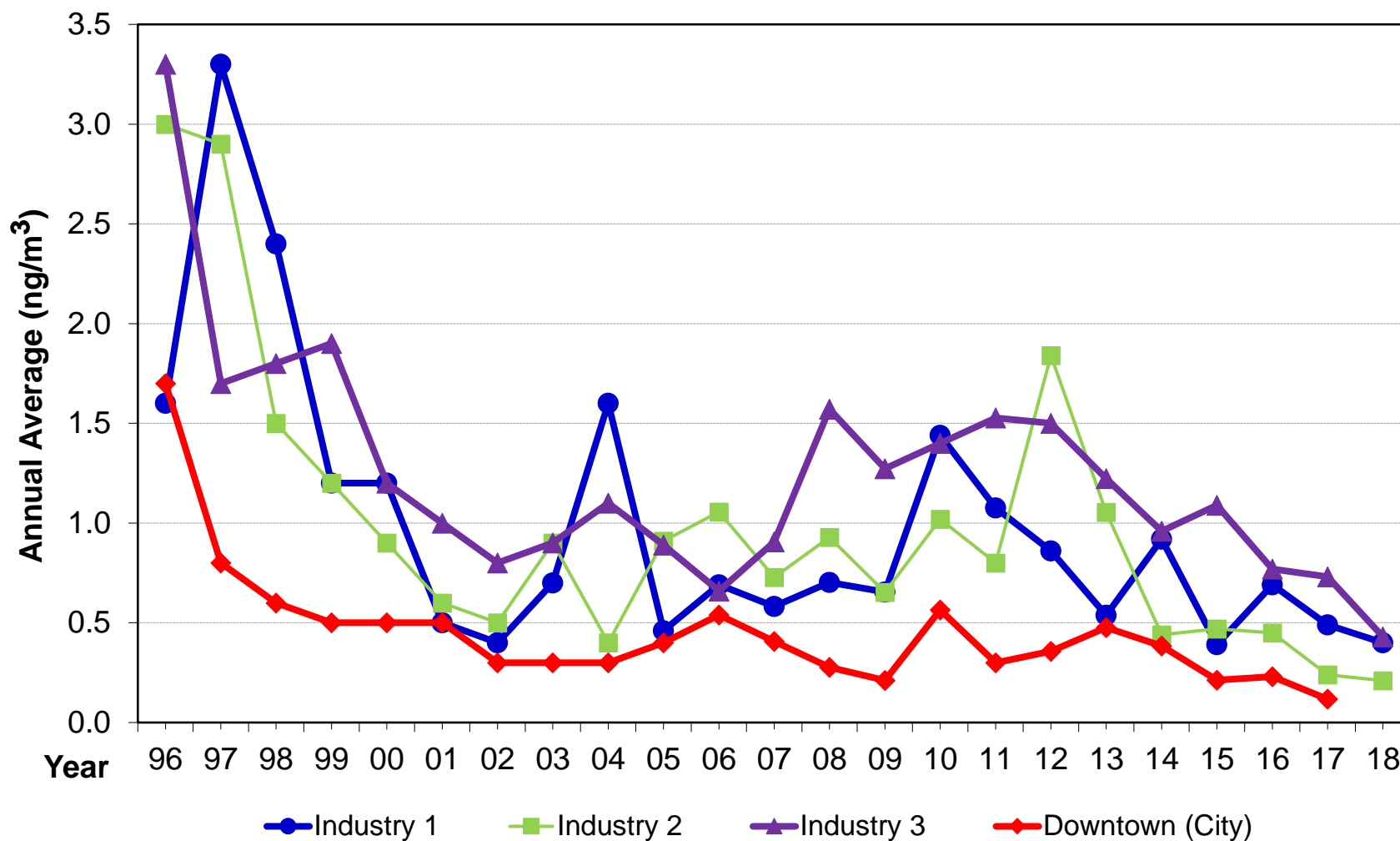


## Benzene Trend

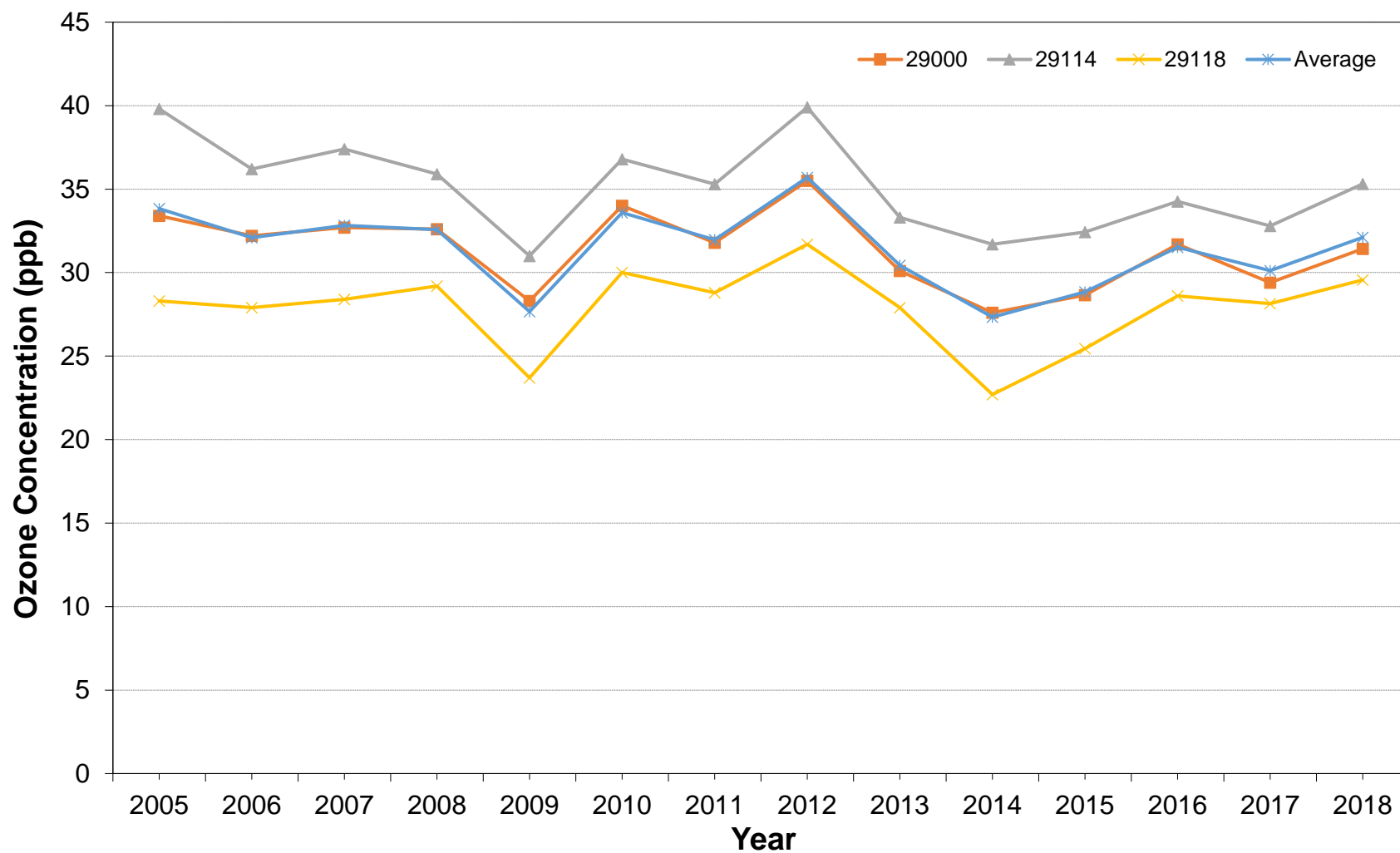




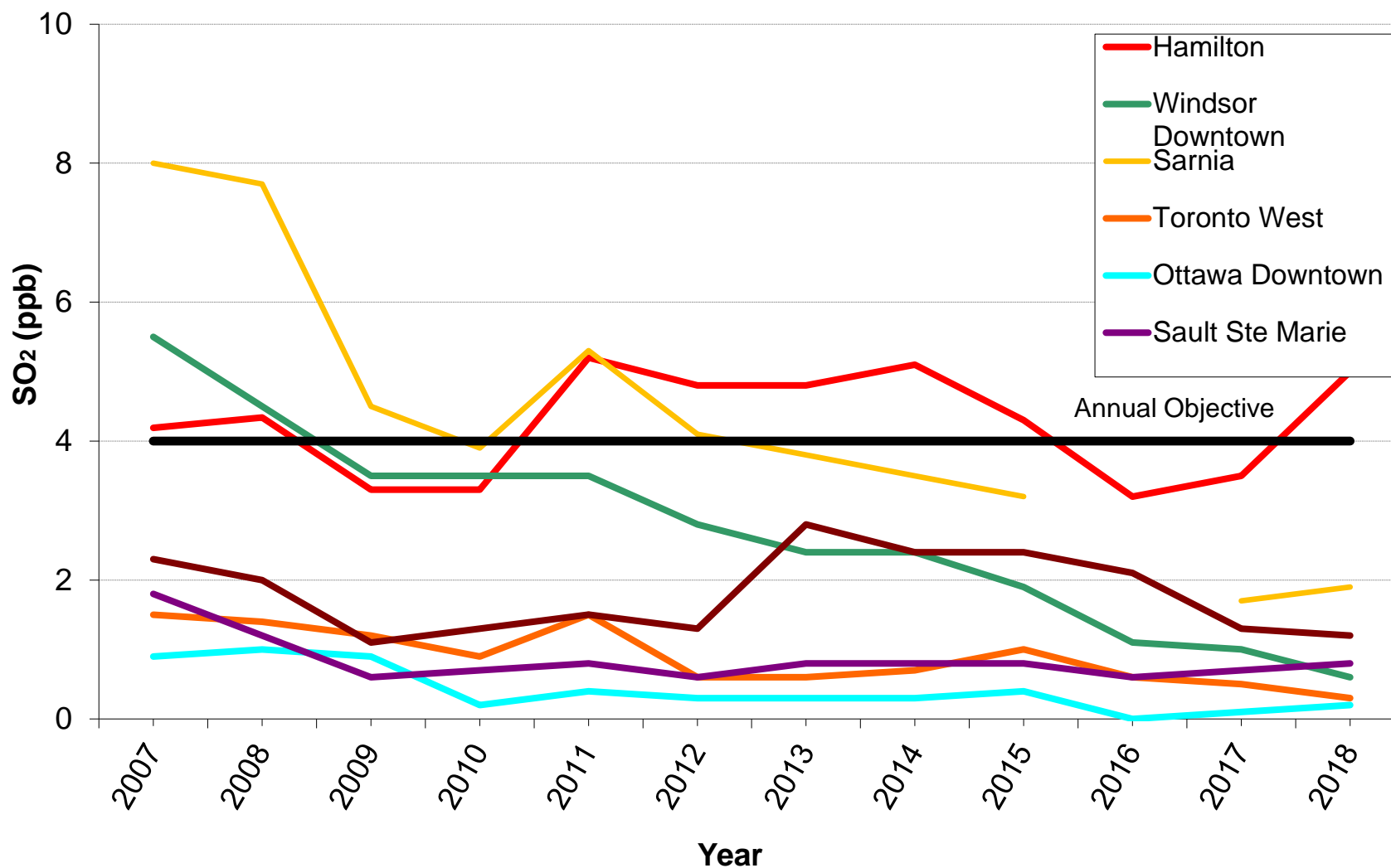
## Benzo(a)pyrene Trend



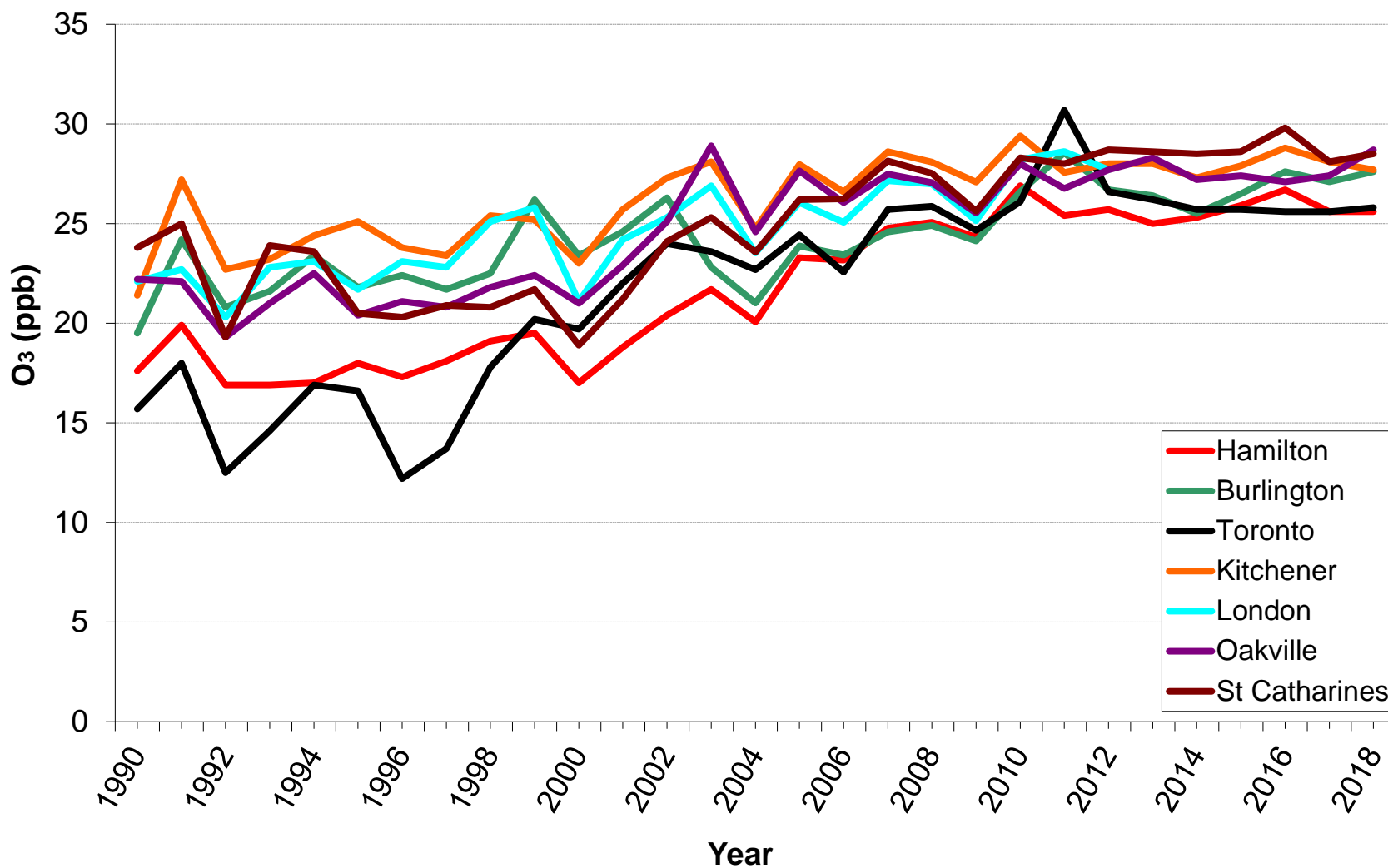
## Ground Level Ozone Trend



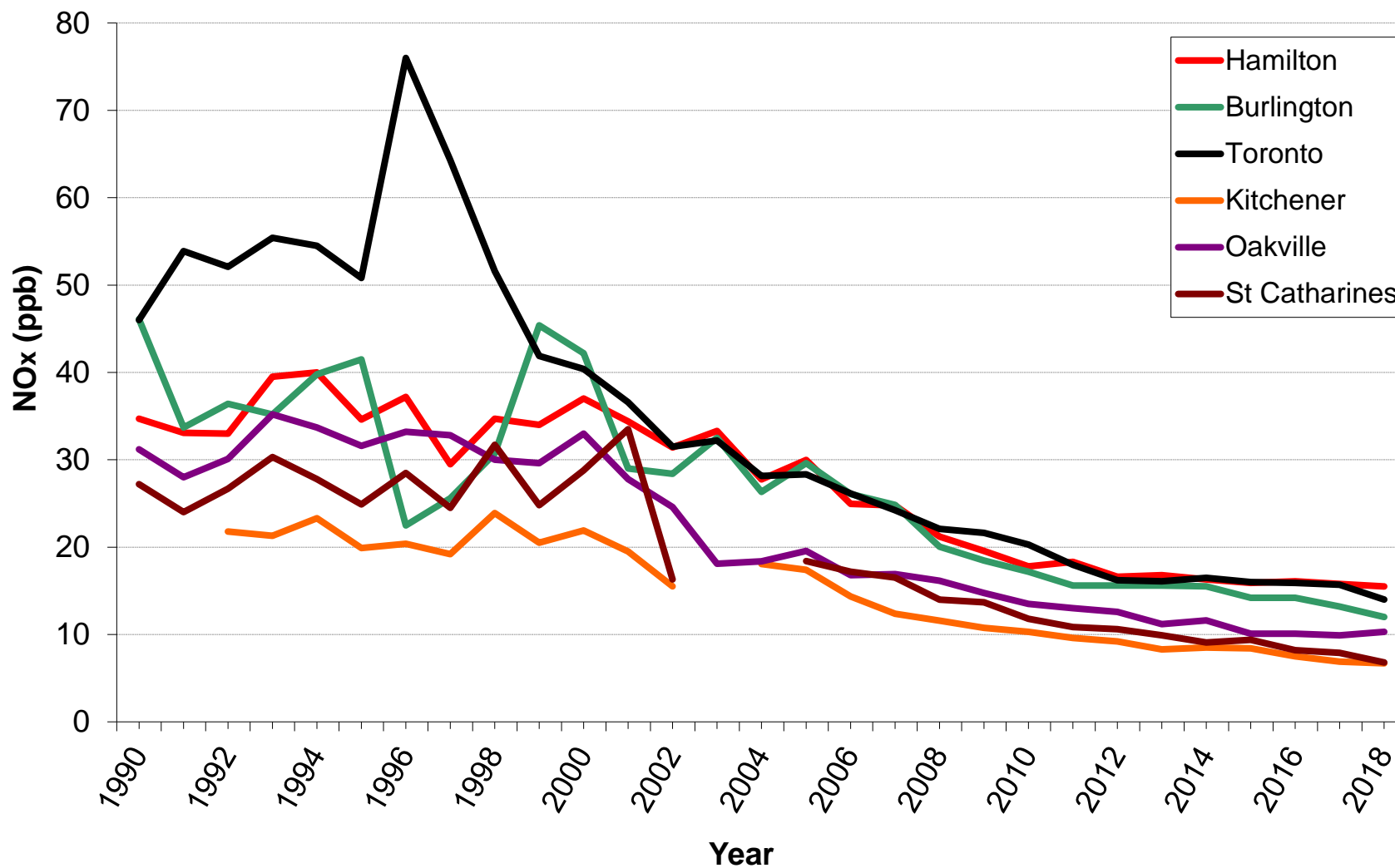
## 11-Year Trends for Sulphur Dioxide (Seven Cities)



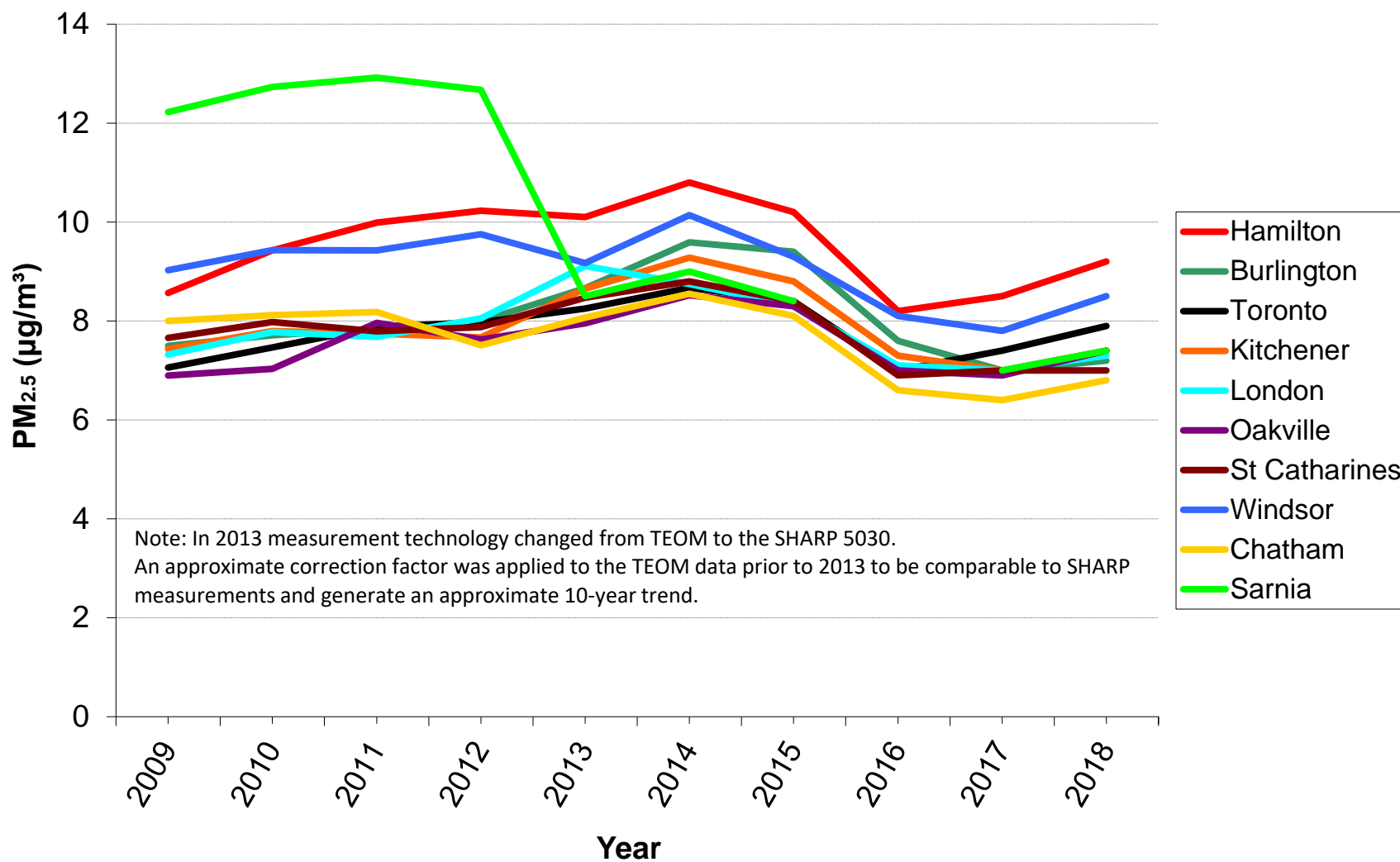
## 28-Year Trends for Ozone (Seven Cities)



## 28-Year Trends for Nitrogen Oxides (Seven Cities)



## 10-Year Trends for PM<sub>2.5</sub> (Ten Ontario Cities)



## 10-Year Trends for PM<sub>2.5</sub> (Four Ontario Cities)

