



Creating vibrant and healthy communities by transforming pavement into green space.





What is Depave Paradise?

At Depave Paradise events, local volunteers gather to reclaim the soil. Using pry bars and shovels, community members break up an area of unused pavement and turn it into living green space.



LET'S GET DIRTY!

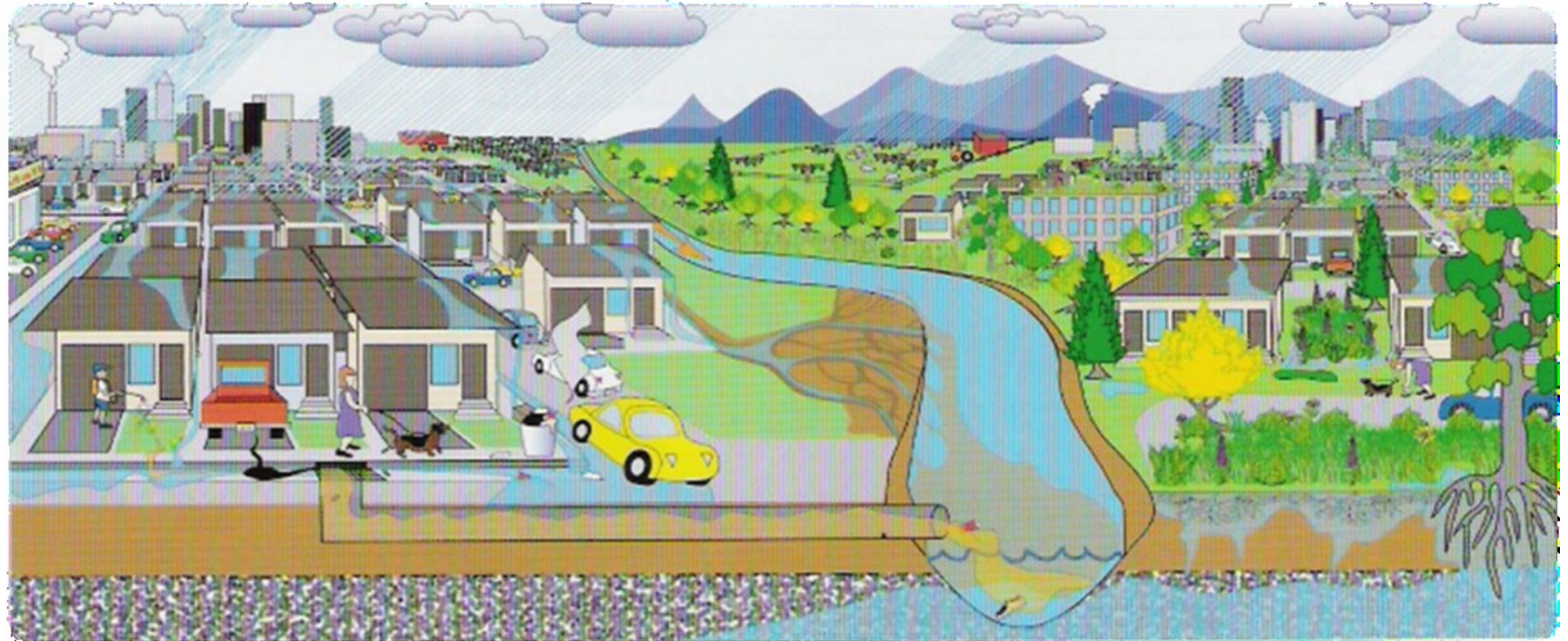
Depave Paradise creates vibrant and healthy communities by transforming asphalt **into green space.**

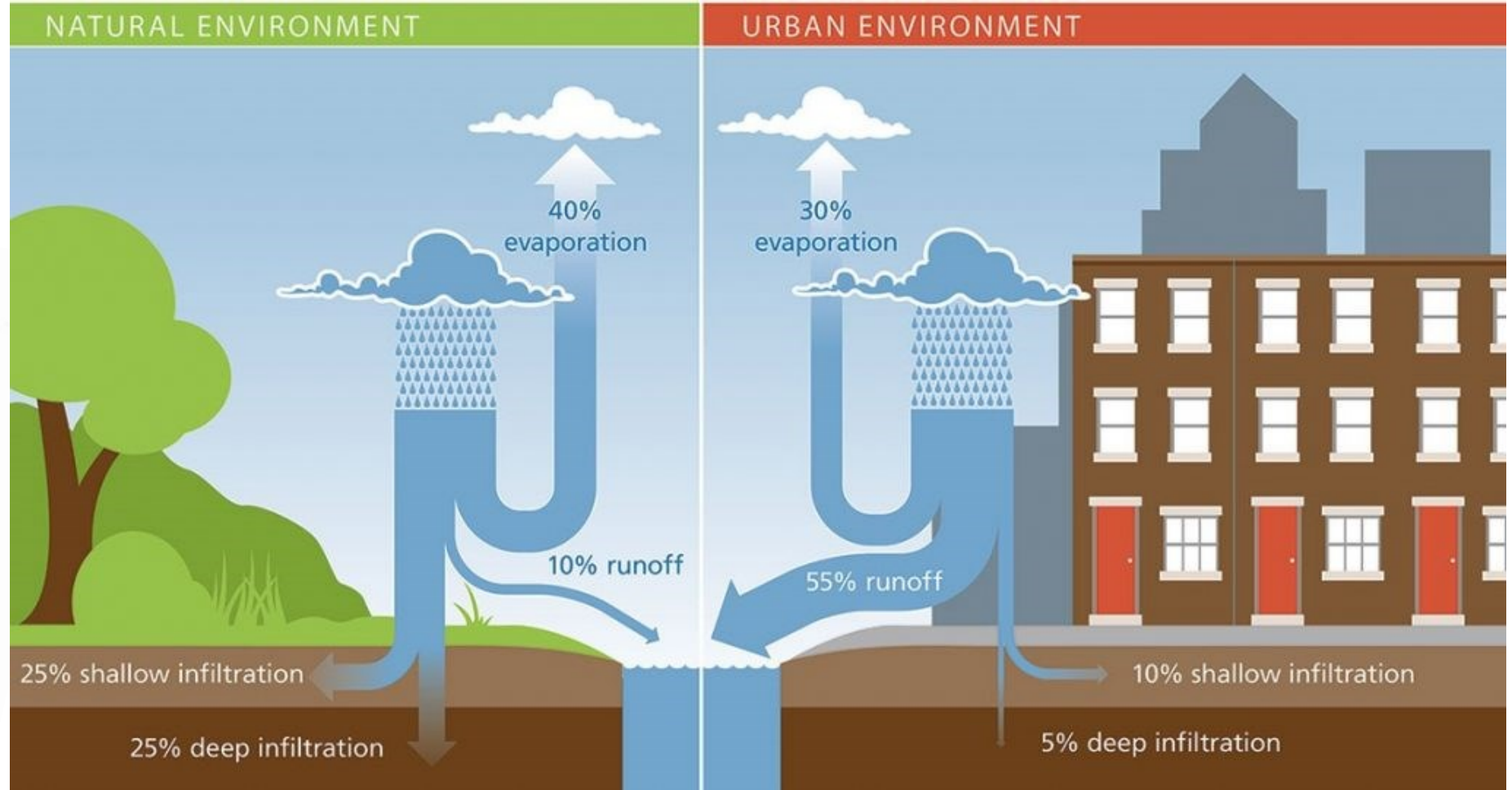




Goals of Depave Paradise:

Stormwater Management, Demonstrations of Best Practices, Beautification, Increased Green Space, Community Building





Depave in Hamilton by the numbers

Since 2012...

- 9 Depave sites across Hamilton including schoolyards, Church parking lot, private business parking lot
- 1056m² of asphalt removed
- 519 Volunteers engaged
- 3923 volunteer hours
- 968 plants and shrubs planted
- 30 trees planted





Depave Paradise creates change



Benefits of Depaving

- Reduces non-point source pollution and flooding through collection and filtration of water
- Educates about the effects of stormwater runoff and benefits of permeable surfaces
- Creates a sense of community through community space renewal and beautification
- Fosters behavioural change and community engagement.



Depave transforms spaces



Green
Venture





Using People Power



Green
Venture





VIPs are engaged





Mayors, MPs, MPPs, City Councilors...





Volunteers





Municipal Staff





Local businesses get involved





Youth volunteers





Depave brings communities together





Great Results: Depave on Kenilworth



August 2017

>



June 2018

>



September 2019

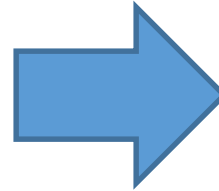
Site Selection: How to identify a Depave site

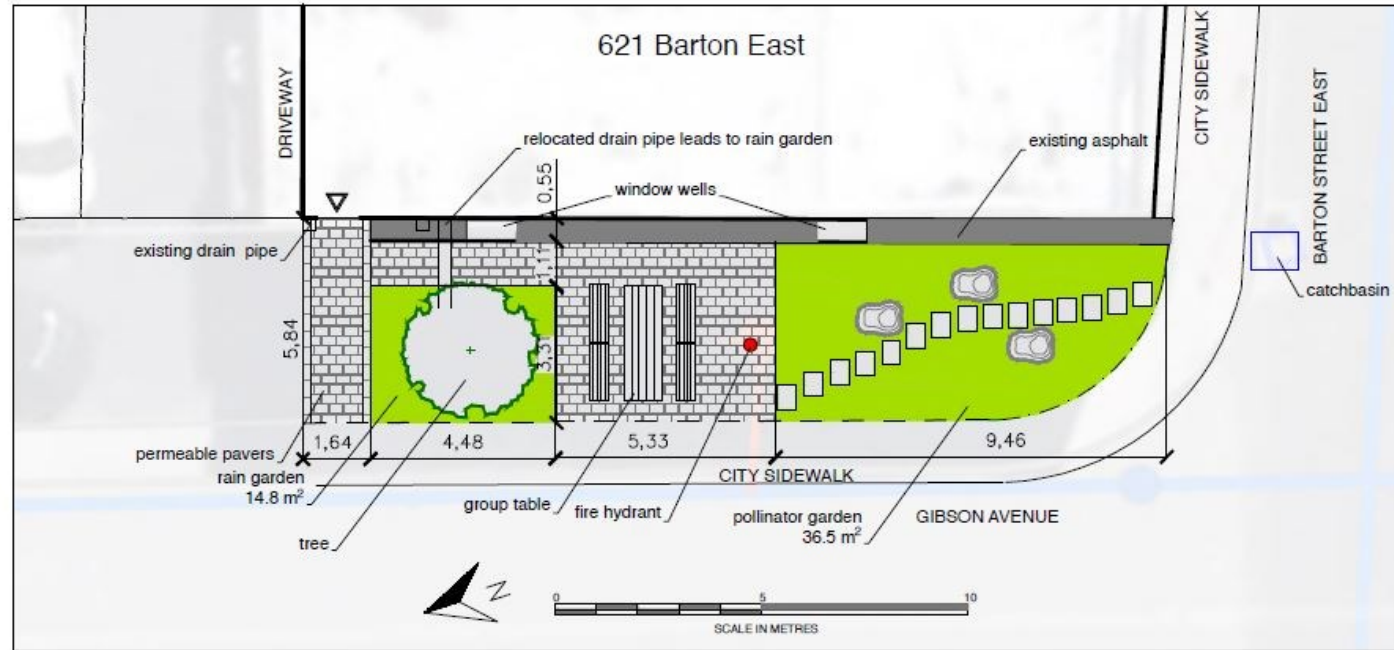
- Located on public land or publicly accessible land (e.g. churches, schools, street side etc.)
- Preference for a highly visible location- *needs to be seen to make an impact on the community*
- 100m² of asphalt to remove
- Not suspected of soil contamination (you will be required to do a soil test)
- Asphalt needs to be replaced with green space- trees and/or plants etc.
- A location where someone will care for the site for the long term
- A site that can be promoted media-wide (signage, social media, newspapers etc.)





Depave Paradise on Barton





SITE STATISTICS

Total area: 98.25 m²

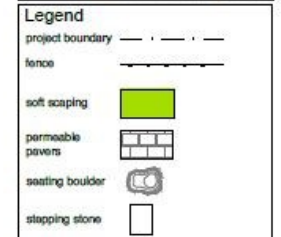
Existing softscape: 0.0 m²

Proposed softscape: 51.3 m²

Existing hardscape: 98.25 m² (asphalt)

Proposed hardscape: 46.95 m²

- 36.25 m² permeable pavers
- 10.7 m² asphalt retained along building



General Notes

- rain garden to infiltrate runoff from relocated downspout
- large table for dining/outdoor classroom
- pollinator garden with pathway

Base Map: City of Hamilton
Water and Wastewater

Client:
GREEN VENTURE HAMILTON DEPAVE
Description: SITE PLAN

Address:
621 Barton Street East
Hamilton, ON L8L 3A1

Scale: 1:100

Date of Issue:



adele pierre
landscape architect
MLA OALA ISA CLD

554 Baptist Church Road
Caledonia ON N3W 2G9
905-679-7277
apierra.ca

Page #

L1

BARTON EAST

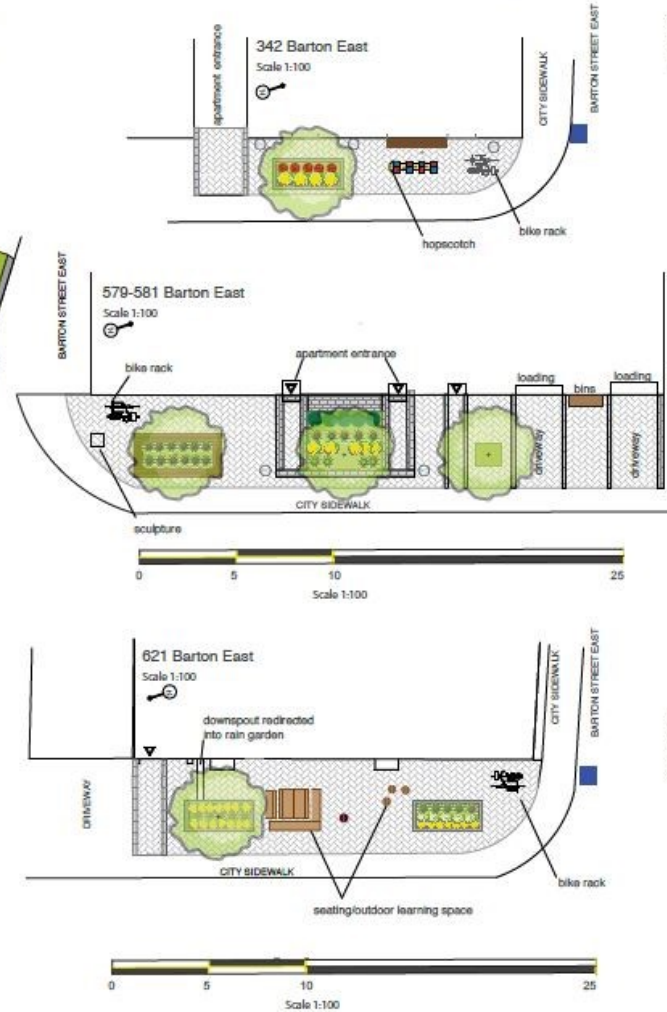
Barton East was once the commercial centre of Hamilton, surrounded by a vibrant community where neighbours could live, work, shop, play and worship. The street has been in decline for a number of years but the merchants of Barton, along with Green Venture Hamilton, now see great potential for a renewal of the streetscape by converting city-owned corner boulevards into community gathering spaces. Shade trees and native perennials planted in rain gardens would beautify street edges while reducing urban heat island effect, providing habitat for pollinators and absorbing rainwater back into the ground. Permeable pavers in place of existing asphalt, would define space while providing an element of stormwater management. Eight potential sites along Barton East have been identified with three sites here presented as conceptual plans. The goal of this proposal is to show the opportunity for significant placemaking both culturally and environmentally, along a historic street.

THE SITES



CONCEPTUAL PLANS

PERMEABLE PAVEMENT RAIN GARDEN LIGHTING
CONTRASTING BORDER SEATING SHADE TREE



PERSPECTIVES AND ELEMENTS





Depave on Cannon: Friendly Streets





Depave Expenses: Services and Supplies

Depave Project costs vary depending on in-kind support, site, post depave vision etc. Expenses include:

- Landscape Architect/Designer
- Drop Box + U-Haul bins for asphalt
- Professional Concrete Saw Cutter
- Construction Company for excavation down to native soils
- Native Plants, Top Soil, Mulch, Trees, Shrubs, Benches, Public Art
- Food Donations for Depave + Planting Party
- Equipment: prybars, wheelbarrows, tools, gloves, safety glasses etc.
- Volunteers on day of Depave and Planting Party!



Partnerships and Funding

- This project aligns with the current Clean and Green Strategy Focus Areas of Beautification and Environmental Stewardship
 - Increase green infrastructure across the City to support stormwater management
 - Implement depave projects across the City to add more garden space
 - Promote pollinator and gardens including native plants





Want to know more?

Laura Anderson

Program Manager, Green Venture

laura.anderson@greenventure.ca

905-540-8787 ext. 158

www.greenventure.ca/depave-paradise

www.depaveparadise.ca