



Notice of Intention to Demolish commercial buildings located at 23 and 25 King Street East, Stoney Creek (PED20042)

January 16, 2020

23 and 25 King Street East, Stoney Creek

25 King Street East

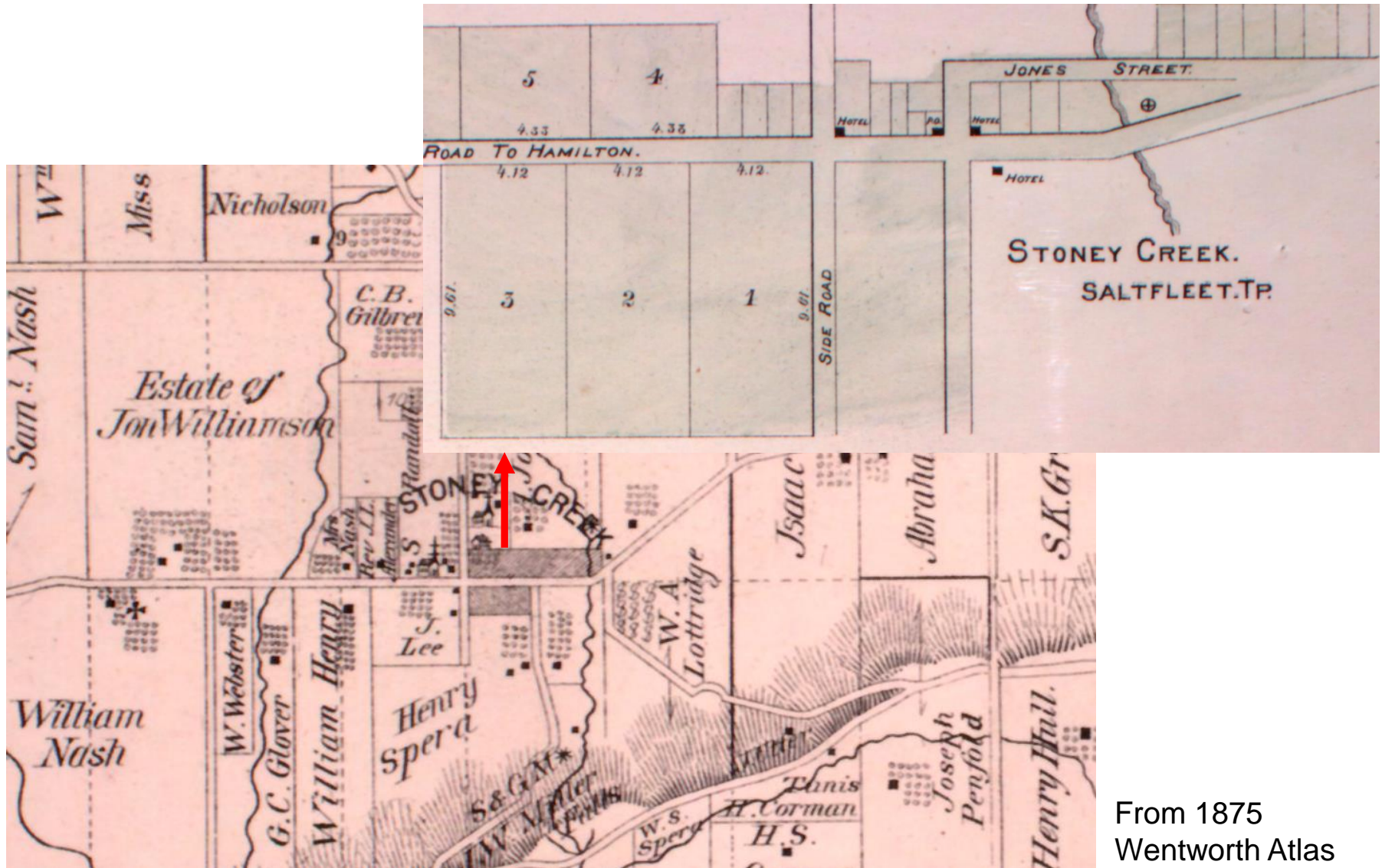
23 King Street East



January, 2020



Location map



From 1875
Wentworth Atlas



The Millen's Store, ca. 1950s (Hamilton Public Library)



The Millen's Store, ca. 1960s (Hamilton Public Library)

Evaluation under Ontario Regulation 9/06

1. Design / Physical Value

- The commercial buildings are not a rare, unique, representative or early example of a style, type, expression, material or construction method.
- The commercial buildings do not display a high degree of craftsmanship or artistic merit.
- The commercial building do not demonstrate a high degree of technical or scientific achievement.



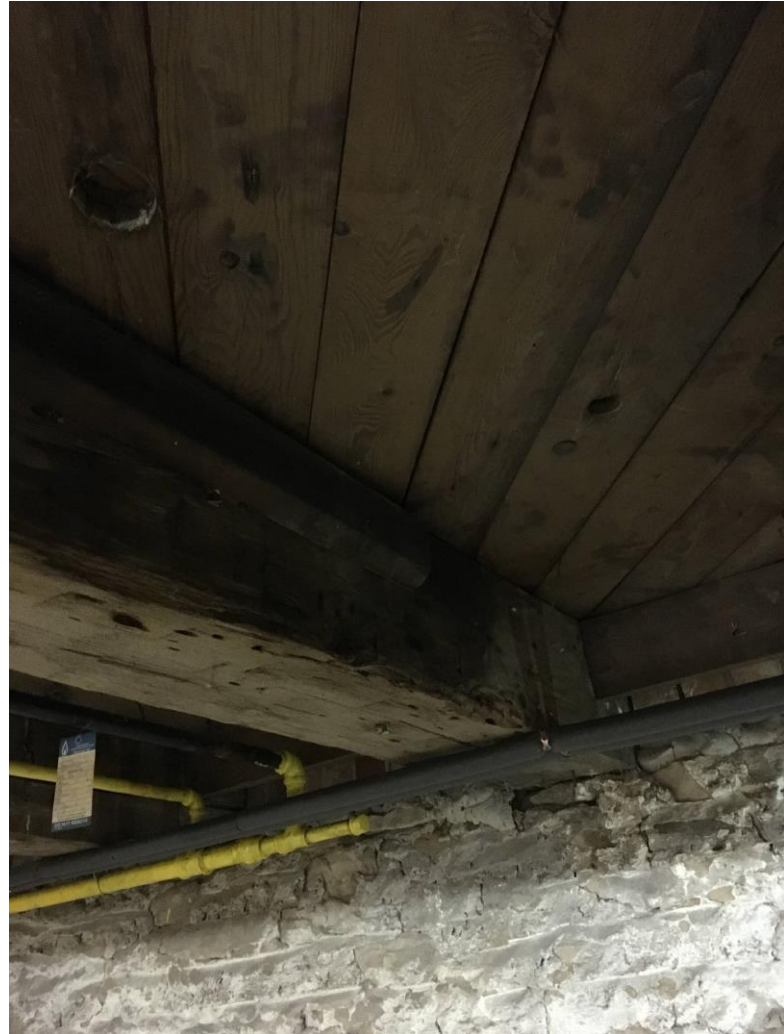
ca.1950s (Hamilton Public Library)



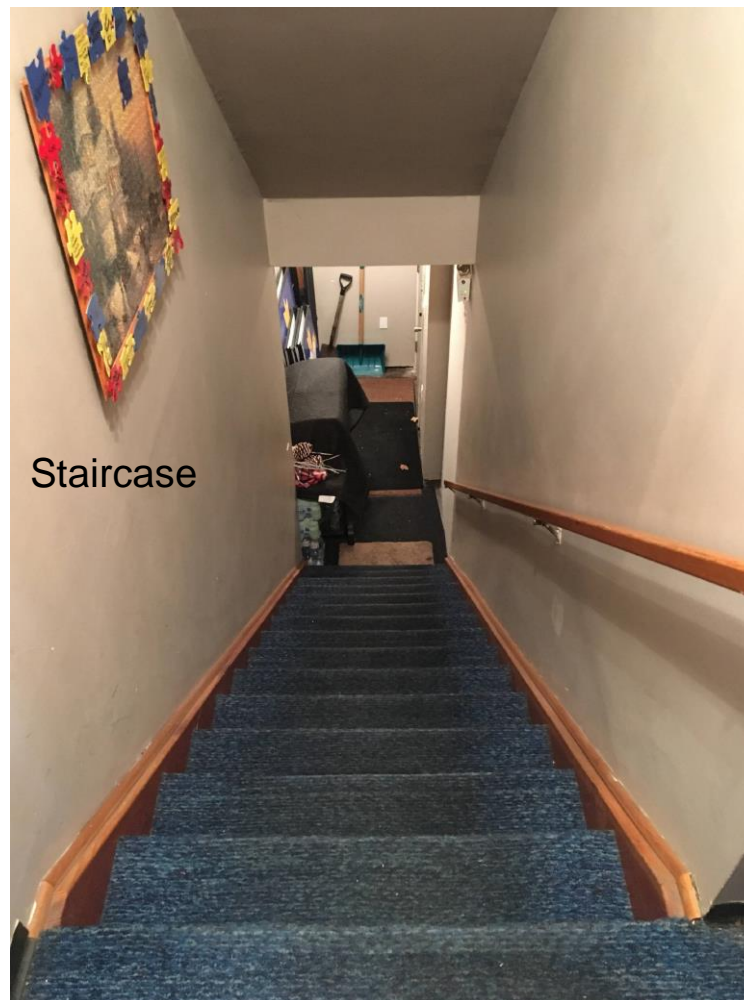
January 2020



January, 2020



Basement of 25 King Street East - January, 2020



25 King Street East - January, 2020



23 King Street East - January, 2020

Evaluation under Ontario Regulation 9/06

2. Historical / Associative Value

- The commercial buildings are not considered to have direct associations with a theme, event, belief, person, activity, organization or institution that is significant to a community.
- The commercial buildings are not considered to have the potential to yield information that contributes to an understanding of a community.
- The commercial buildings are not attributed to a prominent architect.

STONEY CREEK.

A post village in the township of Saltfleet, on the Hamilton macadamized road, seven miles from Hamilton, and 46 miles from Toronto. It is situated on the banks of the Stoney Creek. The village now contains three stores, three hotels, a school, with an average attendance of sixty pupils, and one church, viz: Wesleyan Methodist, erected in 1856, of stone, Rev. Messrs. Wakefield and Smith. The 5th Division Courts are held here, John J. Bradley, clerk; Stid Springstead, bailiff. Mails daily. Population, 200.

WENTWORTH LODGE, A.F. & A.M., No. 66.—Regular communications, Monday on or before the full moon in each month.

Alexander, Rev. Mr., Church of England.

Barrett, Mark, laborer.

BRADLEY, JOHN J., general merchant, and clerk Division Court.

Brown, Thomas, dentist.

Combs, H. A., carpenter.

COMBS, JOHN, cradle manufacturer.

Donohue, Jeremiah, carriage maker

Fair, Chas., pensioner.

Finton, Thomas, gardener.

Howell, Samuel, laborer.

HULL, HENRY, prop^r Exchange Hotel.

JONES, A. G., township reeve postmaster and farmer.

JONES, WILLIAM H., township treasurer and farmer.

Lee, James, blacksmith.

Lee, Hamilton, blacksmith.

Lottridge, William, farmer.

McKELCAN, GEORGE, M.D., physician and surgeon.

Rogers, Wm. H., farmer.

Russell, Thomas, mason.

Second, Solomon, store keeper.

Slingerland, George, boot and shoe maker.

Spera, Henry, farmer.

Springstead, Jasper, constable.

Springstead, Oliver, wagon maker.

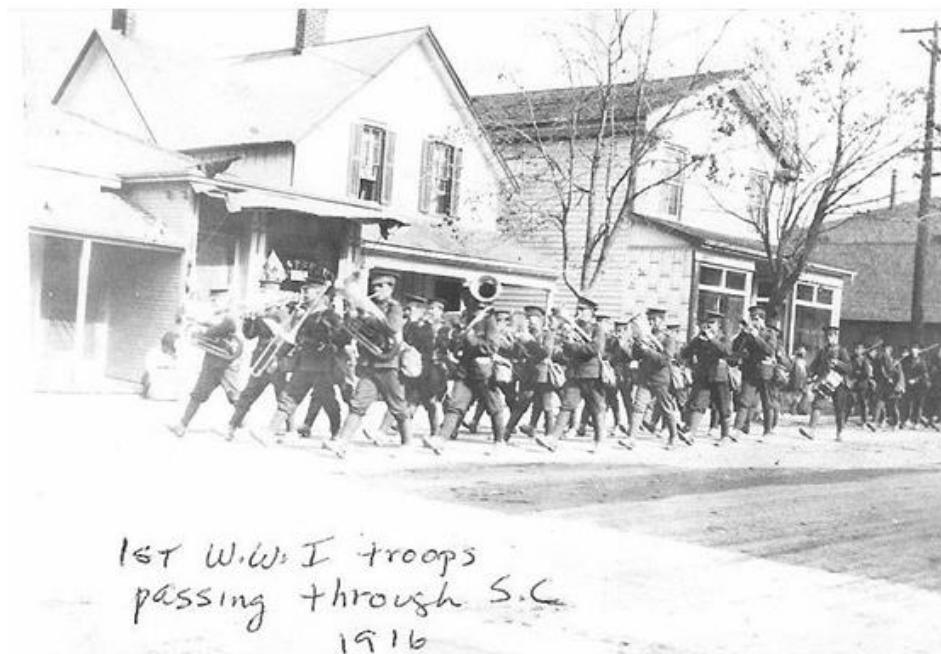
SPRINGSTEAD, STID, bailiff and wagon maker.

Swartz, Jacob, tavern keeper.

Squire, Roland, mason.

Tassier, Edward, potash manufacturer.

Wilson, William, toll gate keeper.



1867- 68 Directories

1916 – Hamilton Spec, from Stoney Creek Historical Society

Ca. 1920



Evaluation under Ontario Regulation 9/06

3. Contextual Value

- The commercial buildings are not considered important in defining, maintaining and supporting the character of the area.
- The commercial buildings are not considered to be physically, functionally, visually and historically linked with the surrounding properties.
- The commercial buildings are not considered a landmark.

2017





THANK YOU FOR ATTENDING

THE CITY OF HAMILTON MUNICIPAL HERITAGE COMMITTEE