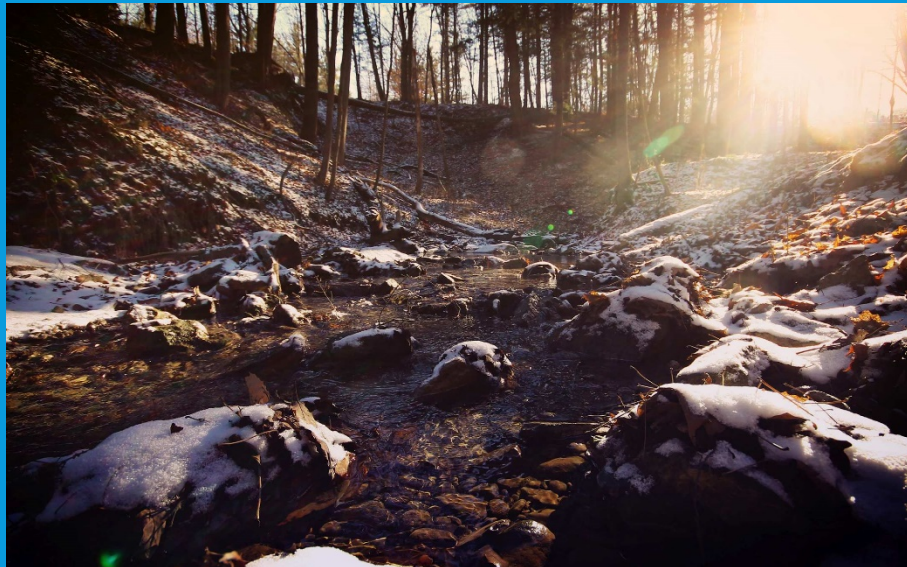
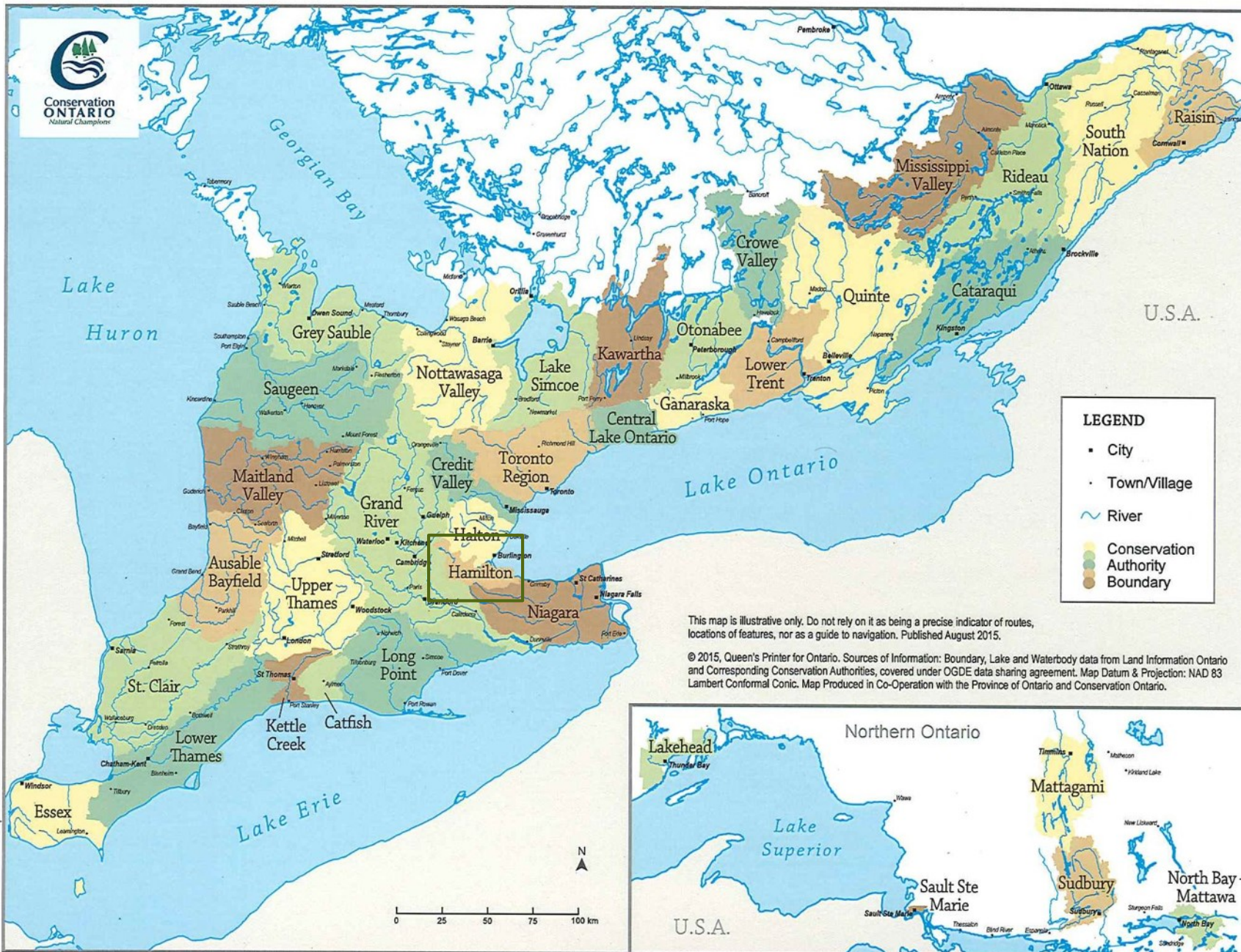


HAMILTON CONSERVATION AUTHORITY BUDGET PRESENTATION CITY OF HAMILTON

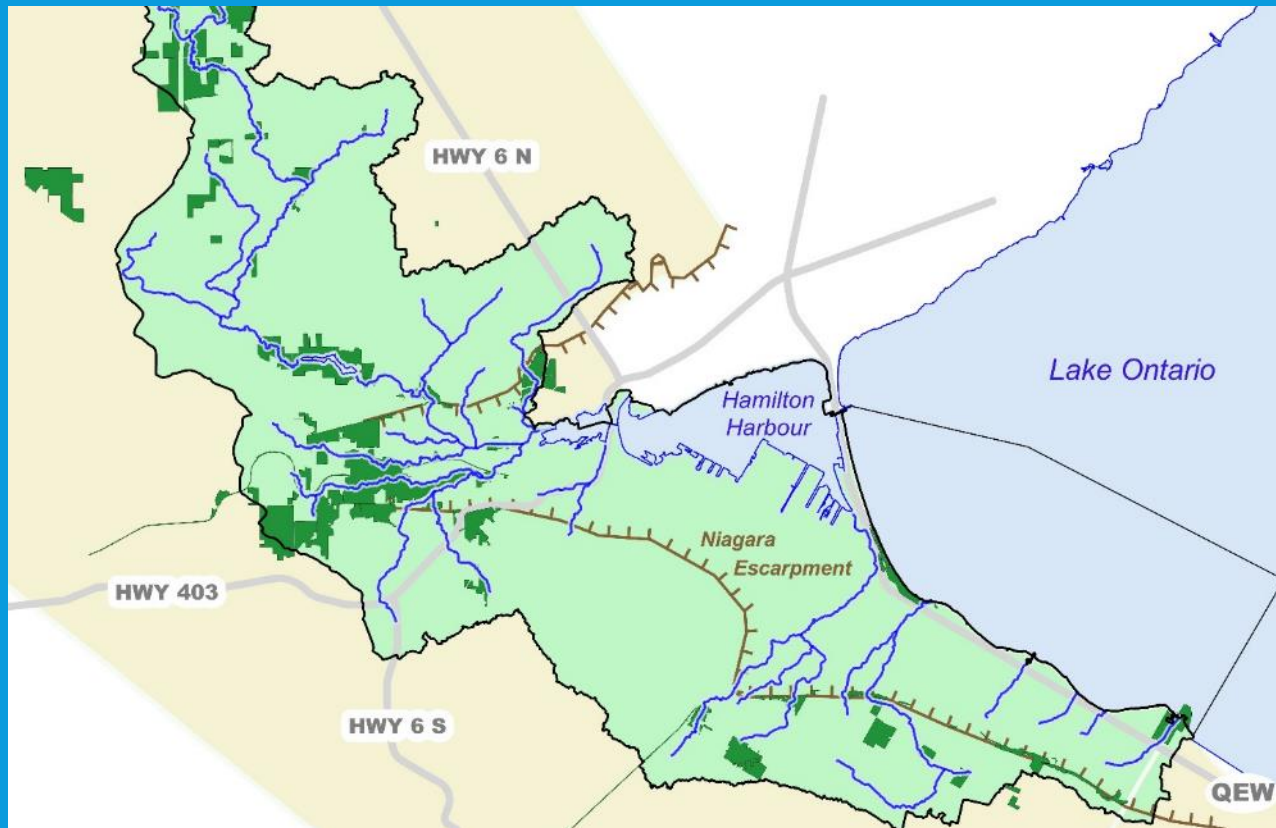


January 21, 2020



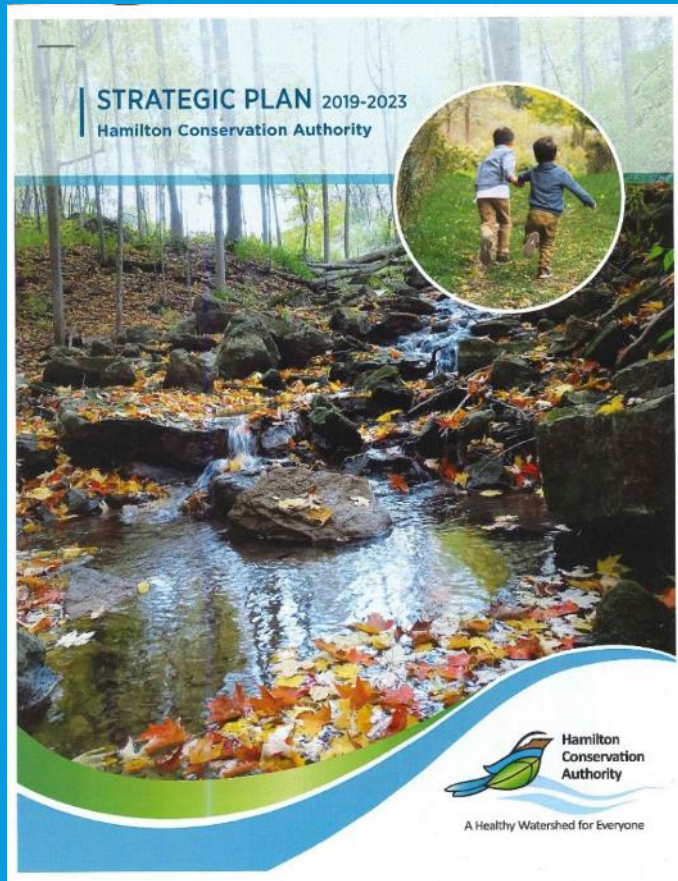


HCA WATERSHED



- Our watershed is comprised of two member municipalities
- City of Hamilton (provides 99.3% of funding) and Township of Puslinch (provides 0.7% funding)

HCA STRATEGIC PLAN 2019-2023



Education & Environmental
Awareness



Organizational
Excellence



Natural Heritage
Conservation



Conservation Area Experience



Water
Management

HCA LANDHOLDINGS

- Major land owner within our watershed area owning/managing 4,484 hectares (11,079 acres) of land which represents 10% of our watershed
- These lands are unique pockets of local greenspace that help the city and watershed thrive and connect people to nature



RECREATION OPPORTUNITIES

- Recreation is a key contributor to our self-generated revenues
- Wide range of recreation for residents of Hamilton and beyond
 - 6 major conservation areas
 - Over 145km of trails
 - 300 camp sites
 - 2 recreational lakes for swimming areas
 - boat rental & fishing
 - 340 slip marina
 - historical village



DUNDAS PEAK & WATERFALLS



- Popularity and promotion through social media in the GTHA continues
- HCA and the City of Hamilton have put much effort into designing and implementing measures to mitigate congestion and safety concerns and will continue to do so, while also allowing this unique site to remain accessible to the public

SPENCER GORGE



- Shuttle service, along with the City of Hamilton's pilot its \$250 unauthorized parking fines has had a considerable impact in managing visitation and parking
- Visitor and parking management will continue to be key areas to address as we evolve our operations
- Partnership and collaboration with municipal bylaw enforcement, Tourism Hamilton and Hamilton Police Service are key

MASTER PLANNING



Valens Lake Conservation Area Master Plan 2019

DRAFT – December 2019

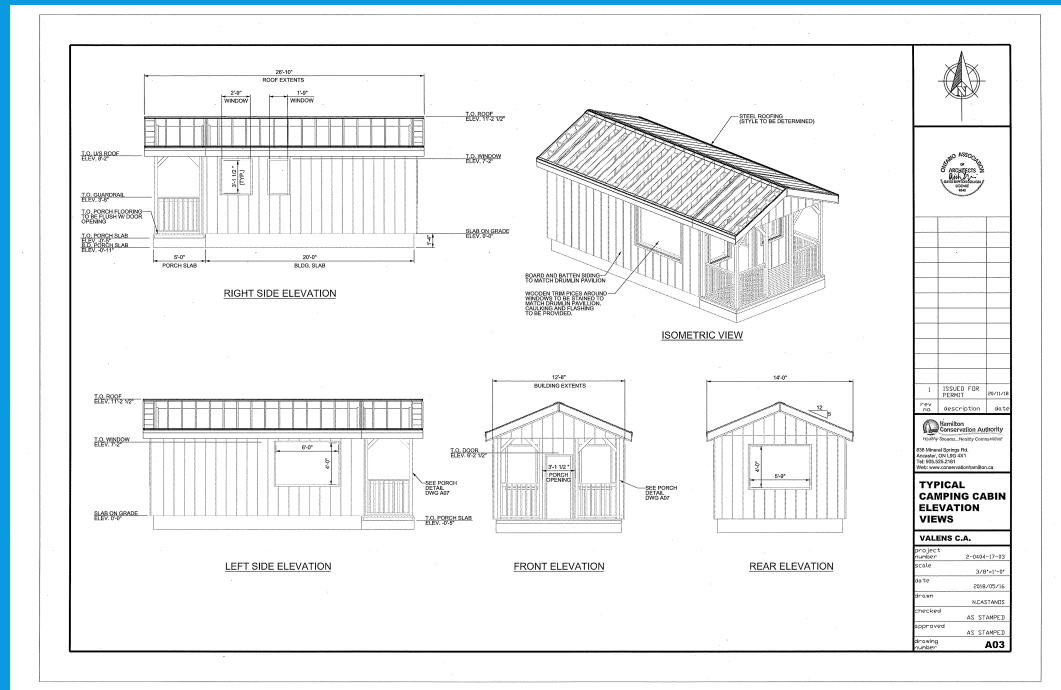


- Master planning over the next decade will provide updated guiding documents for all areas
- Westfield was completed in 2018 and Valens Lake will be finalized shortly
- Fifty Point Conservation Area will be undertaken in 2020



ROOFED CAMPING (GLAMPING)

Cabins



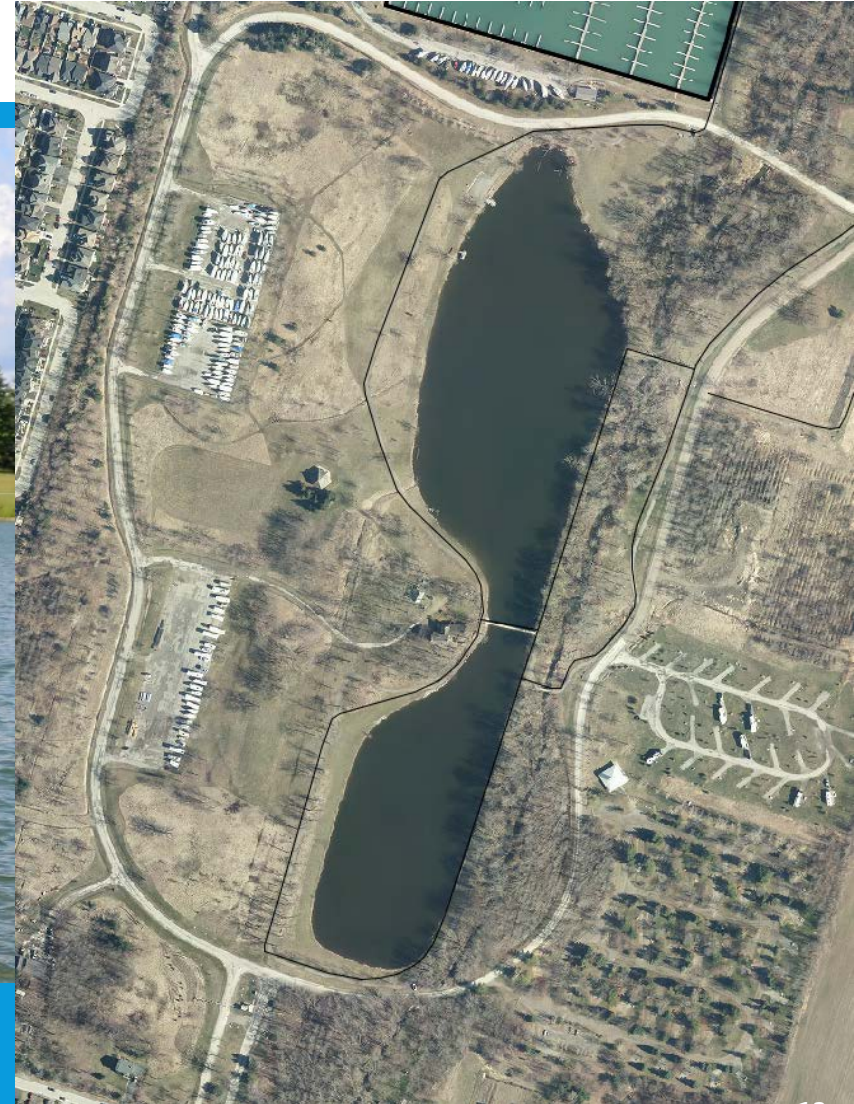
- New camping option at Valens Lake Conservation Area coming in 2020 and will enhance self generated revenue
- 8 cabins will be completed and be available for rent
- Proven to be very popular at Provincial and National Parks

HCA EDUCATION PROGRAMS



- Each year HCA hosts thousands of children to Dundas Valley Conservation Area
- They learn about environmental conservation in a spectacular outdoor setting
- Hamilton Conservation Foundation has committed \$125,000 annually so that no levy dollars are used to operate the program
- Foundation also provides transportation subsidies to at-risk schools, which cover the bussing costs

FIFTY POINT CONSERVATION AREA FISH HABITAT & WETLAND IMPROVEMENT PROJECT



CHRISTIE LAKE DAM MAINTENANCE



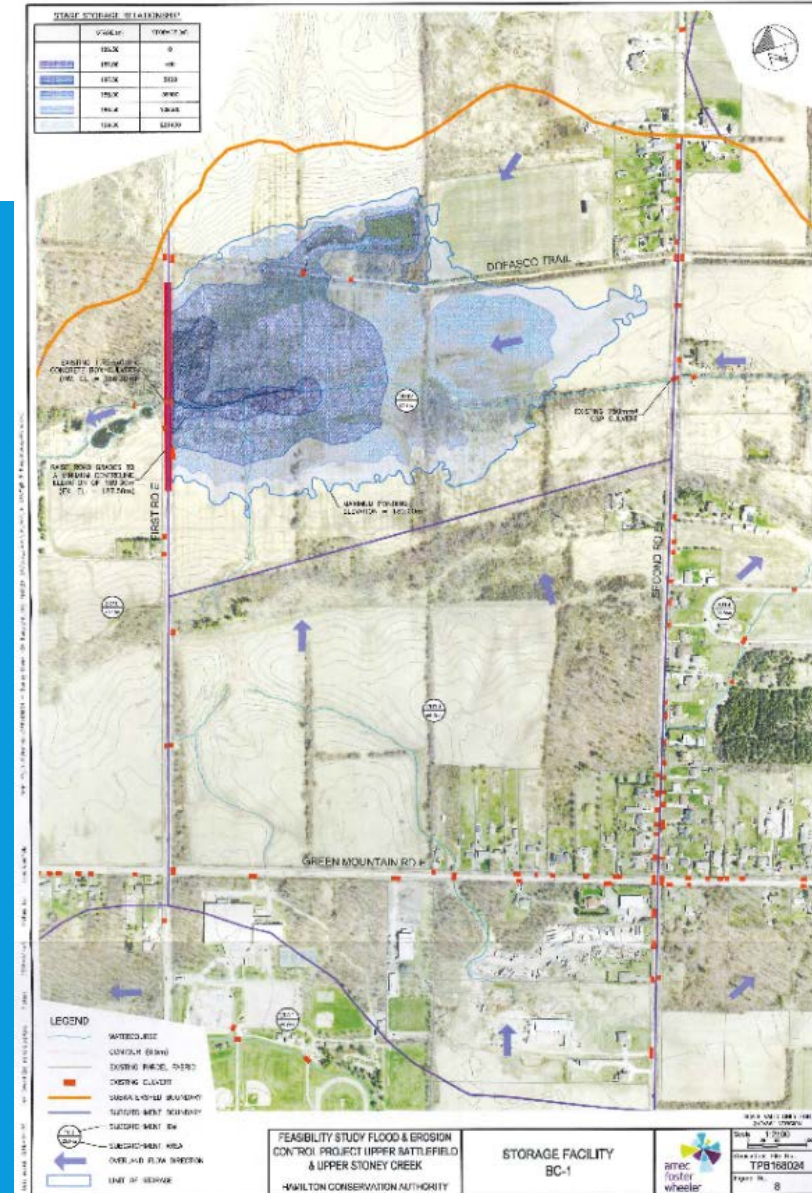
VALENS LAKE DAM MAINTENANCE



SALTFLEET CONSERVATION AREA WETLAND RESTORATION

Properties and Buildings at Risk 100-year Storage Scenario

Existing Combined Battlefield Creek and Stoney Creek	46 Buildings	102 Properties
With Four Wetlands Constructed	10 Buildings	52 Properties



SALTFLEET CONSERVATION AREA WETLAND RESTORATION



STEWARDSHIP PROGRAM



STEWARDSHIP PROGRAM



HCA 2020 Budget Details
As approved by HCA Board of Directors
November 7, 2019

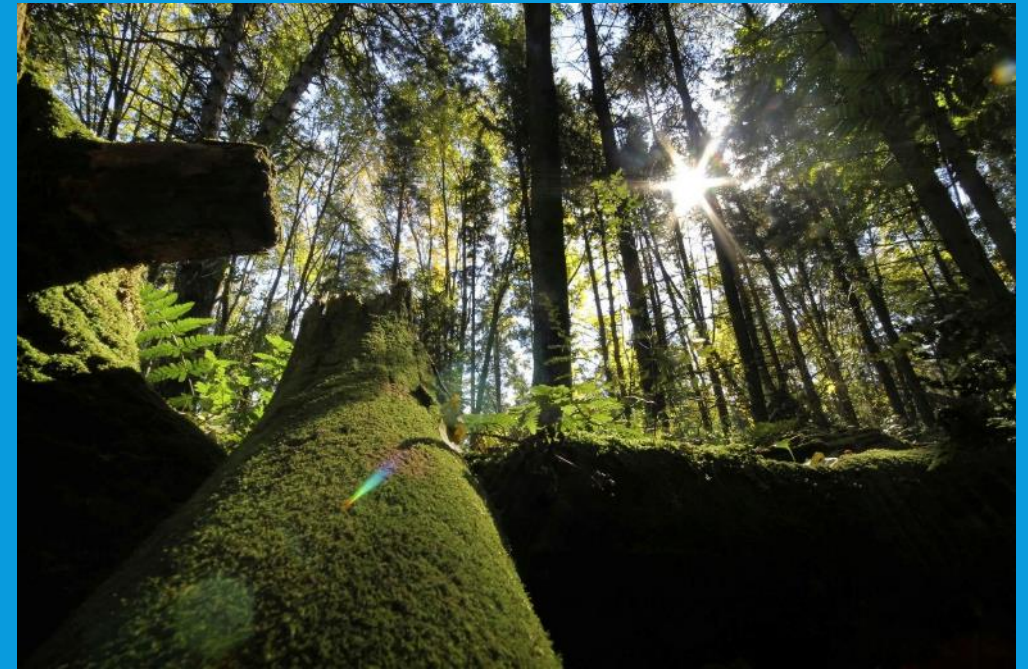
GOALS

- 1) Support the 2019 – 2023 Strategic Plan
- 2) Budget for no greater levy increase than recommended by City Council/staff (2% for 2020)
- 3) Operate on a cash neutral/positive basis
- 4) Support Conservation Authorities Act mandate

2020 BUDGET SUMMARY

2020 budget provides :

- Sufficient self-generated revenues to meet expenses
- Dam maintenance
- Development steps for Saltfleet wetlands
- Education and stewardship programs
- Updated master plans



LEVY INCREASE

- This year's levy increase is as recommended by Council
- Recommended increase of 2.0%,
last year was 1.5%
- Translates to an increase of \$89,200 for 2020
- Total levy required this year is \$ 4,546,900
 - City of Hamilton share is 99.3%, \$ 4,517,100
 - Township of Puslinch share is 0.7%, \$ 29,800

OPERATE ON A CASH NEUTRAL / POSITIVE BASIS

Revenues are a combination of:

- Self generated commercial sales (\$8.6)
- Corporate and individual donations and grants (\$0.2)
- Federal and provincial grants (\$0.2)
- Municipal levy (\$4.5)
- 2020 total \$13.5 million

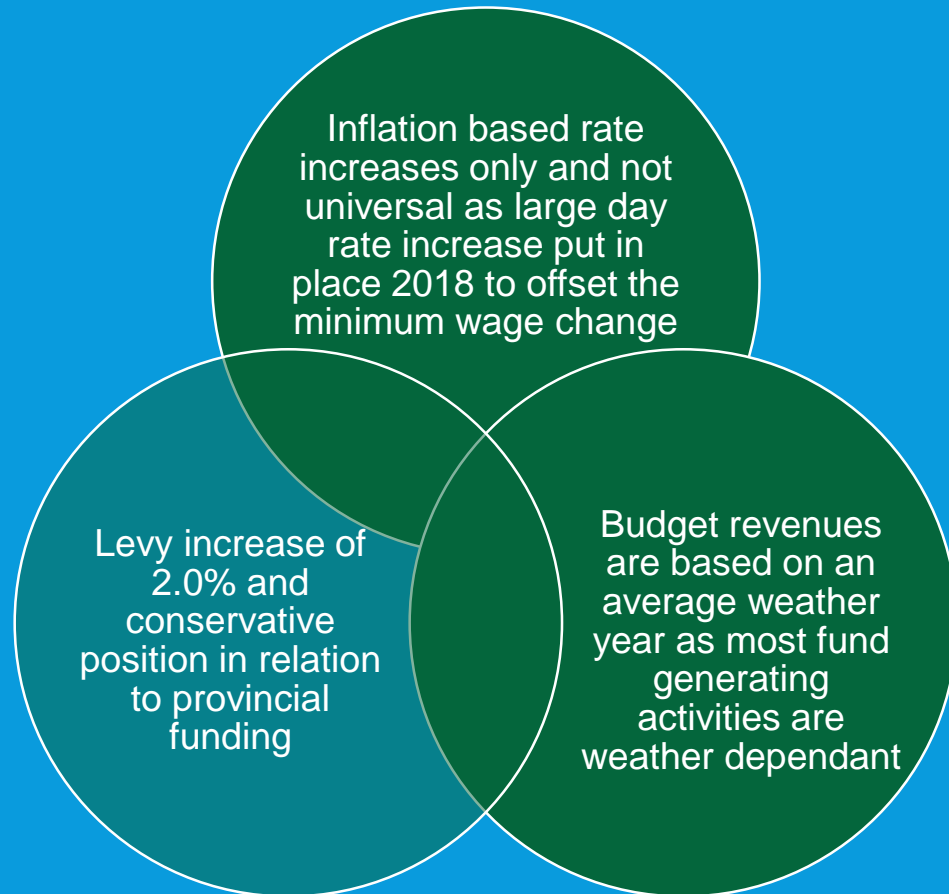
Expenses are a combination of:

- Salaries, wages and staff expenses (\$8.3)
- Fleet operation, repair and maintenance, facility operating costs including utilities, third party contracting and consulting services, marketing and promotion (\$4.8)
- 2020 total \$13.1 million

Repayment of loan principal and residual

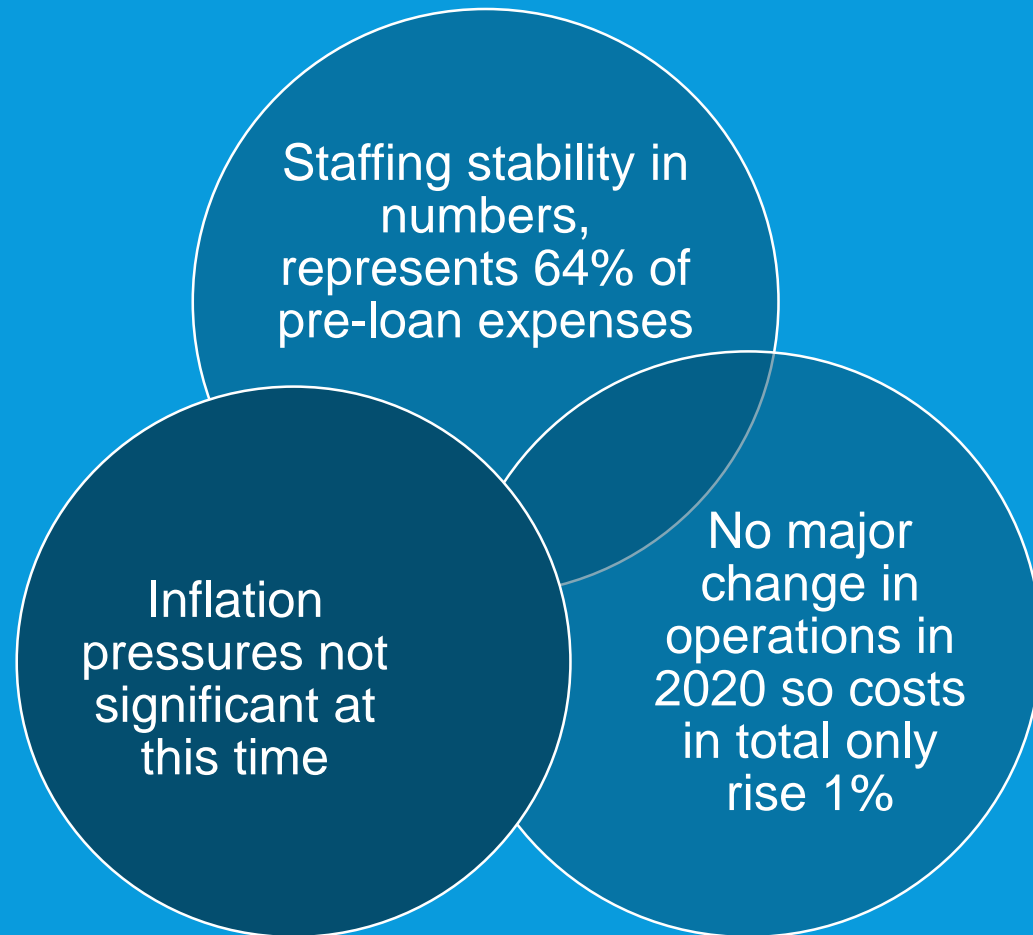
- Repayment of 2 loans:
- First - for Canal Park, and
- Second - wind up of Defined Benefit pension plan
- 2020 \$0.2 million
- Planned residual of \$0.2, seed money for Saltfleet development

REVENUE HIGHLIGHTS



	Budget <u>2020</u>	Budget <u>2019</u>	
Levy	\$ 4,547	\$ 4,458	2.0%
Gate admissions	2,348	2,282	2.9%
Marina	1,399	1,368	2.3%
Camping	1,243	1,037	19.9%
Equipment	1,100	1,214	-9.4%
Mgmt Fees & permits	727	726	0.1%
Events	353	363	-2.8%
Other*	1,793	1,770	1.3%
* film & facility, grants & donations			
Total	<u>\$ 13,510</u>	<u>\$ 13,218</u>	2.2%

EXPENSE HIGHLIGHTS



	Budget <u>2020</u>	Budget <u>2019</u>	
Staff expenses	\$ 8,349	\$ 7,906	5.6%
Equipment	905	1,269	-28.7%
Materials & supplies	768	499	53.9%
Utilities	543	469	15.8%
Other*	2,560	2,866	-10.7%
*promotion, contracting, legal			
Total	<u>\$ 13,125</u>	<u>\$ 13,009</u>	0.9%

LEVY USE BY DIVISION

Division	2020	2019	\$ Change
Conservation Areas	\$0	\$0	\$0
Westfield Village	602,300	590,500	11,800
WP&E	1,414,200	1,288,400	125,800
Corporate Support	2,530,400	2,578,800	-48,400
Total	\$4,546,900	\$4,457,700	\$89,200

LOAN PAYMENTS

Remaining loans :

1) Veldhuis (Canal Park) loan

44K principal payment, \$0 interest

2010 - Original terms - Loan of \$440 thousand @ 0.0% interest, 10 year term
final payment March 31st, 2020

2) DB Pension Deficit loan:

\$172K principal payment, \$15K interest

2011 - Original terms - Loan of \$1.5 million @ 4.25% interest, 10 year term
final payment June 30th, 2021

CONFEDERATION BEACH PARK

- Owned by the City of Hamilton, managed by the HCA
- Management agreement expired December 31st, 2016
- New agreement now in place: term of 10 years plus two 5 year renewals
- Only monetary impact to HCA is the management fee, calculated as a percentage of expenses, approximately \$425K per year
- The 2019 attendance was average at Wild Waterworks; expecting more of the same in 2020 as no new offerings to be in place
- Park operations assisted by Public Works while Wild Waterworks and tenant rents combined expected to be net breakeven

THANK YOU FOR YOUR CONTINUED SUPPORT

