



WELCOME TO THE CITY OF HAMILTON

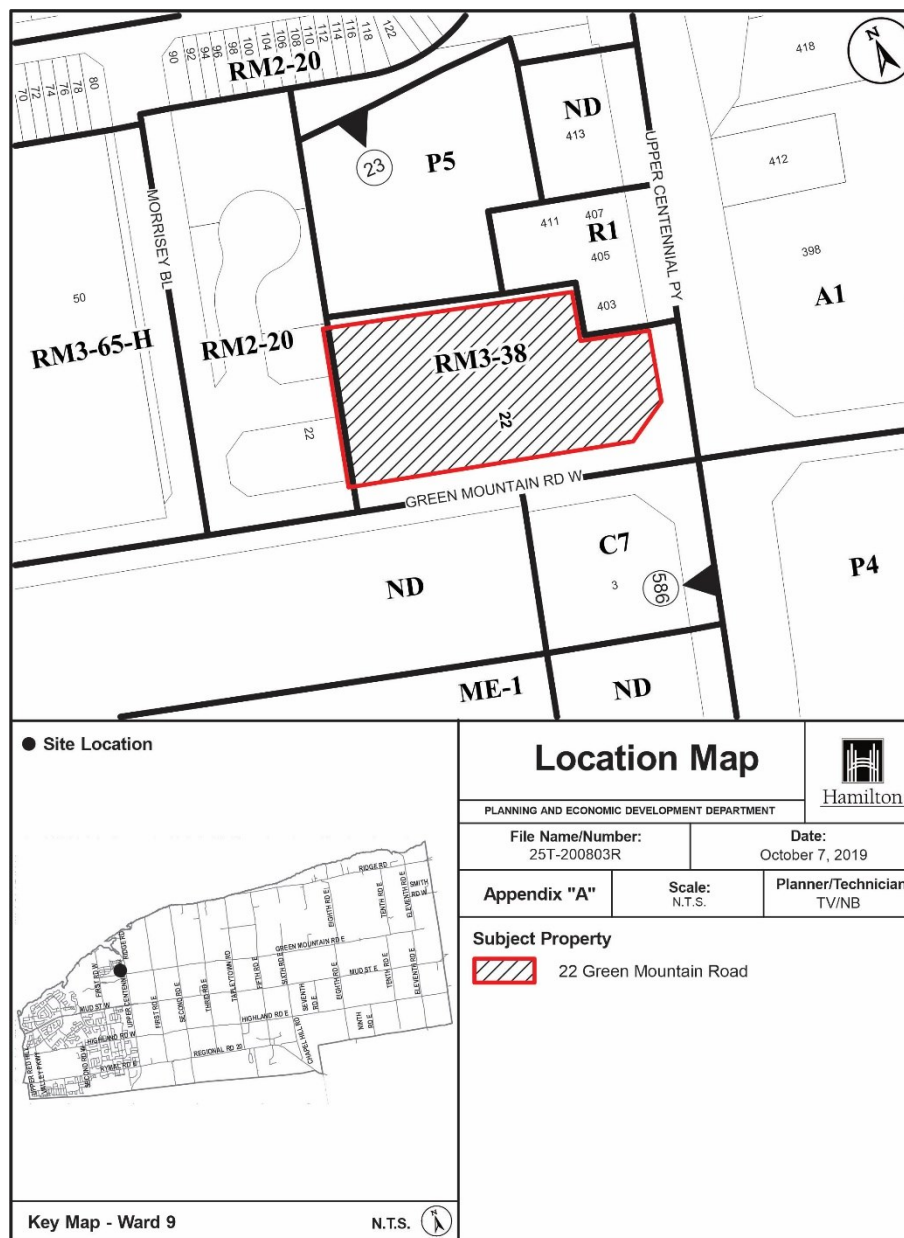
PLANNING COMMITTEE

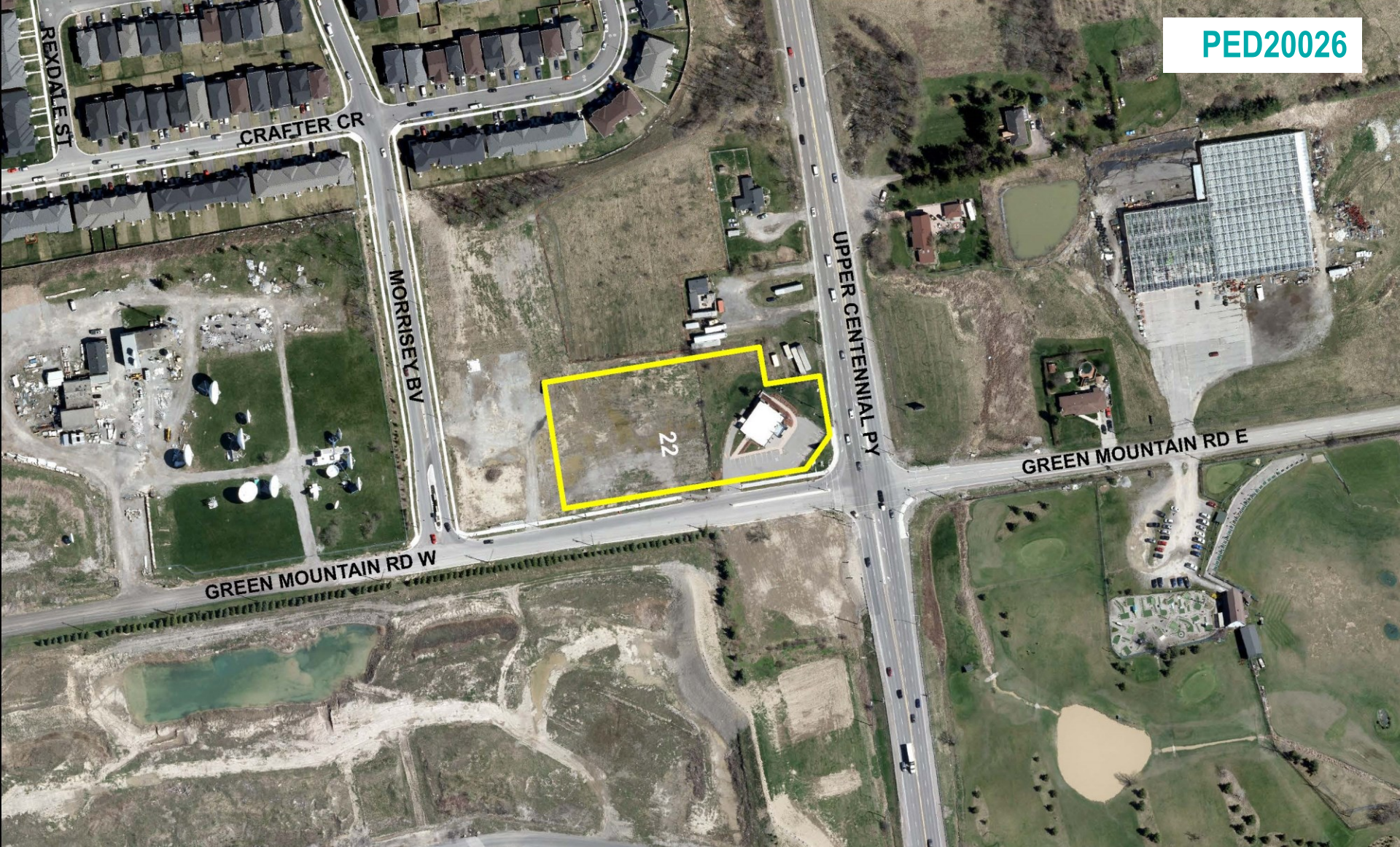
February 4, 2020

PED20026 – (25T-200803R)

Application for Revised Draft Plan of Subdivision for Lands Located at
22 Green Mountain Road West, Stoney Creek.

Presented by: Tim Vrooman



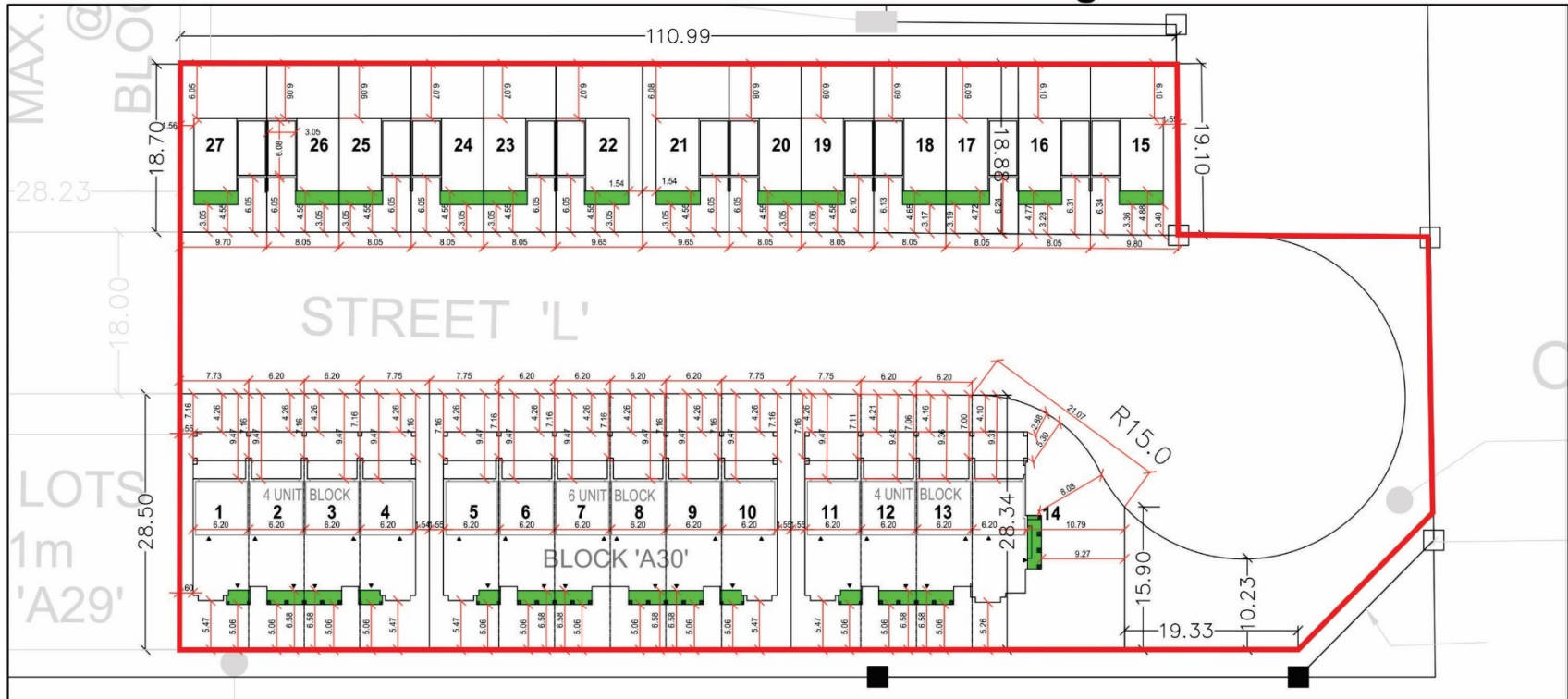


SUBJECT PROPERTY



22 Green Mountain Road West, Stoney Creek

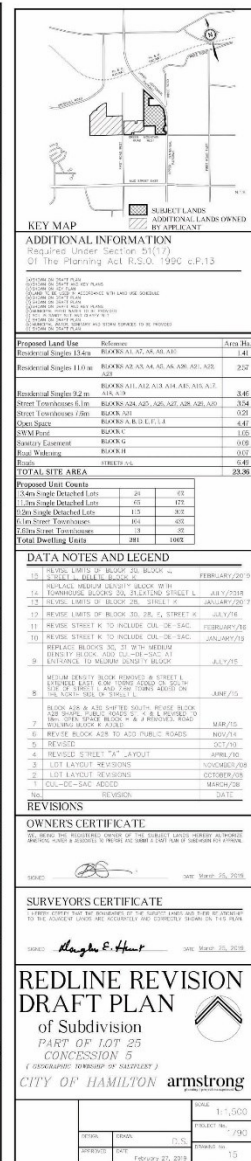
VICTORY PHASE 4: Lotting



Aug 14, 2019

LOT	1	2	3	4	5	6	7	8	9	10	11	12	13	14	15	16	17	18	19	20	21	22	23	24	25	26	27
Area (m2)	221.41	173.85	173.85	222.30	221.75	173.85	173.85	173.85	173.85	222.30	222.16	173.39	173.06	436.17	183.53	152.76	152.17	151.58	150.99	150.72	180.64	180.60	150.63	150.60	150.58	150.55	180.91
Frontage (m)	7.73	6.20	6.20	7.75	7.75	6.20	6.20	6.20	6.20	7.75	7.75	6.20	6.20	21.07	9.80	8.05	8.05	8.05	8.05	8.05	9.65	9.65	8.05	8.05	8.05	8.05	9.70

 Covered Porch





Southeast corner of site from intersection of Green Mountain Road and Upper Centennial Parkway



Southeast edge of site from Green Mountain Road



Southwest edge of site from Green Mountain Road



West end of site from Utter Place



View to the west along Utter Place



View to the north along Morrissey Boulevard



View to the west along Green Mountain Road



View to the east along Green Mountain Road



Commercial development across Green Mountain Road



View to the south along Upper Centennial Parkway



View to the north along Upper Centennial Parkway



Example of street townhouse built form



Example of dual fronting units



Archaeological site to the north (Block 'E')



THANK YOU FOR ATTENDING

THE CITY OF HAMILTON PLANNING COMMITTEE