

# Climate and New Pipelines

General Issues Committee

2020 February 5

Don McLean, Hamilton 350



# 66 People Have Died in Indonesia's Devastating Floods in Jakarta

- The disaster, experts say, underscores the impacts of climate change in a country with a capital city that is sinking so quickly that officials are working to move it to another island.

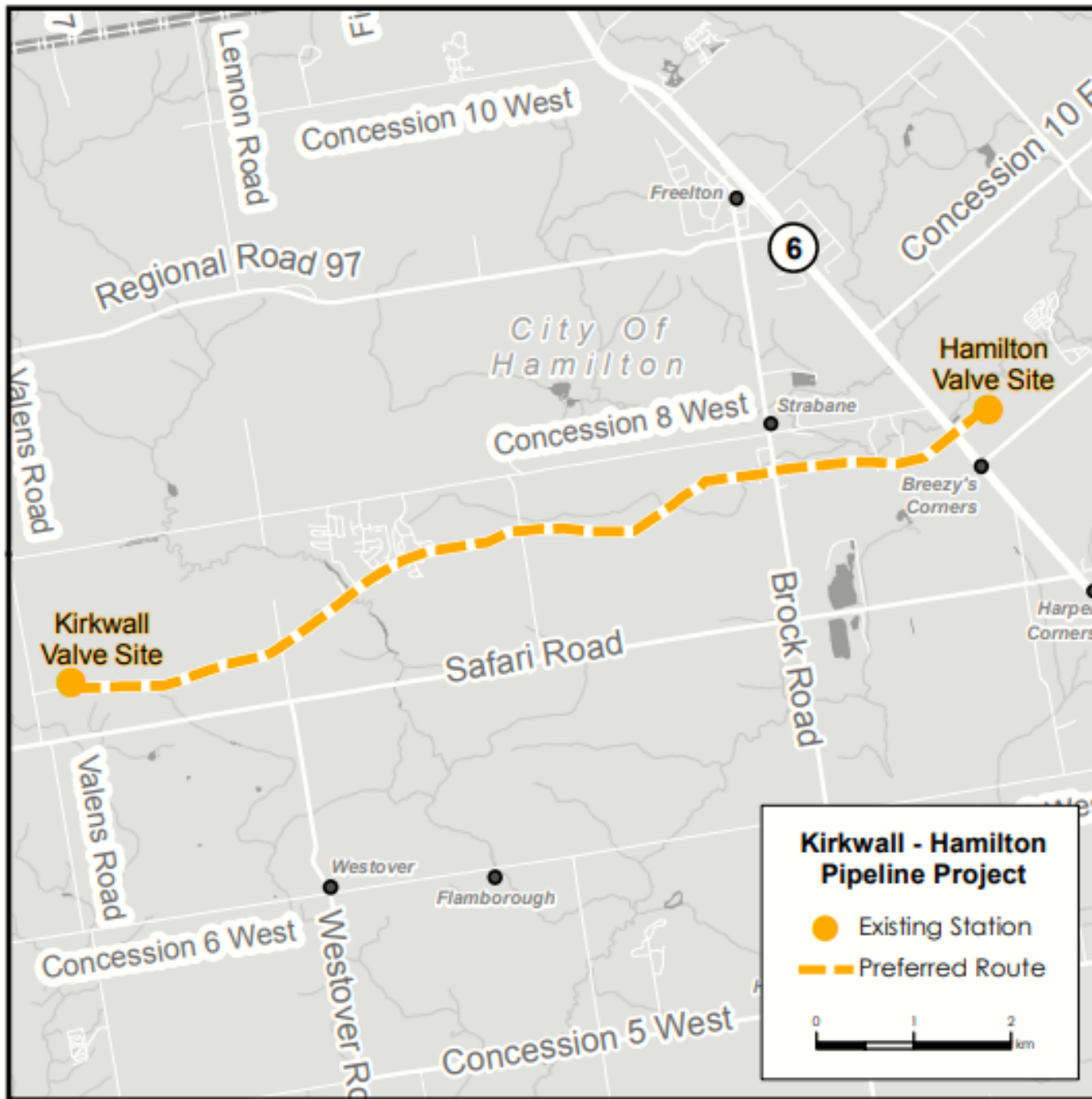
*Source: Time Magazine – Jan 8, 2020*

# Mogadishu left reeling as conflict and climate shocks spark rush to capital



▲ People fleeing drought in the Lower and Middle Shabelle regions of Somalia reach a makeshift camp for displaced people on the outskirts of Mogadishu. Photograph: Farah Abdi Warsameh/AP

Forced from their homes by floods and fighting, 800,000 people have crammed into informal settlements in the Somali capital. Now efforts are afoot to bolster local resources



# City Response Required

*Excerpt from Procedural Order 1 of Ontario Energy Board – Jan 30, 2020*

## **IT IS THEREFORE ORDERED THAT:**

1. Enbridge Gas, parties that filed intervenor requests and parties that filed comments may file with the OEB by **February 10, 2020** written submissions on the following:
  - a. The Draft Issues List attached to Appendix A to this Procedural Order.
  - b. Whether the scope of the Leave to Construct proceeding should include:
    - i. impacts related to the methods of upstream natural gas extraction (such as hydraulic fracturing) for natural gas that will be transported through the pipeline
    - ii. impacts related to the ultimate downstream consumption of the natural gas transported through the pipeline.

# Blasting is required!

## Enbridge didn't tell residents

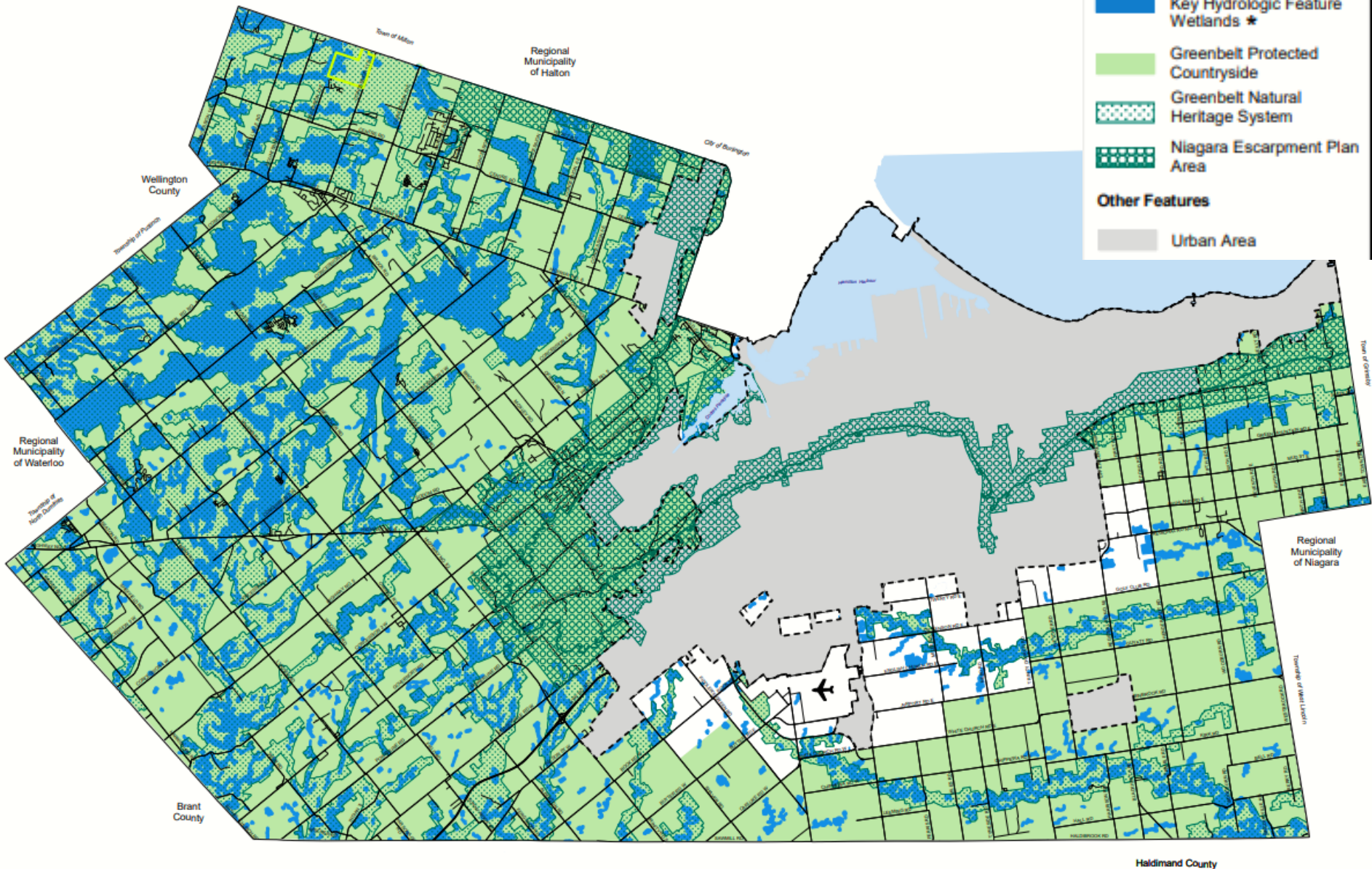
- “Based on the shallow drift thickness over bedrock and knowledge from previous pipeline installation, bedrock will be encountered. Bedrock encountered during trench excavation will be excavated by means of a hoe-ram and/or blasting. Noise, vibration, fly rock damage and dust may impact wildlife, residences, water wells and businesses.”

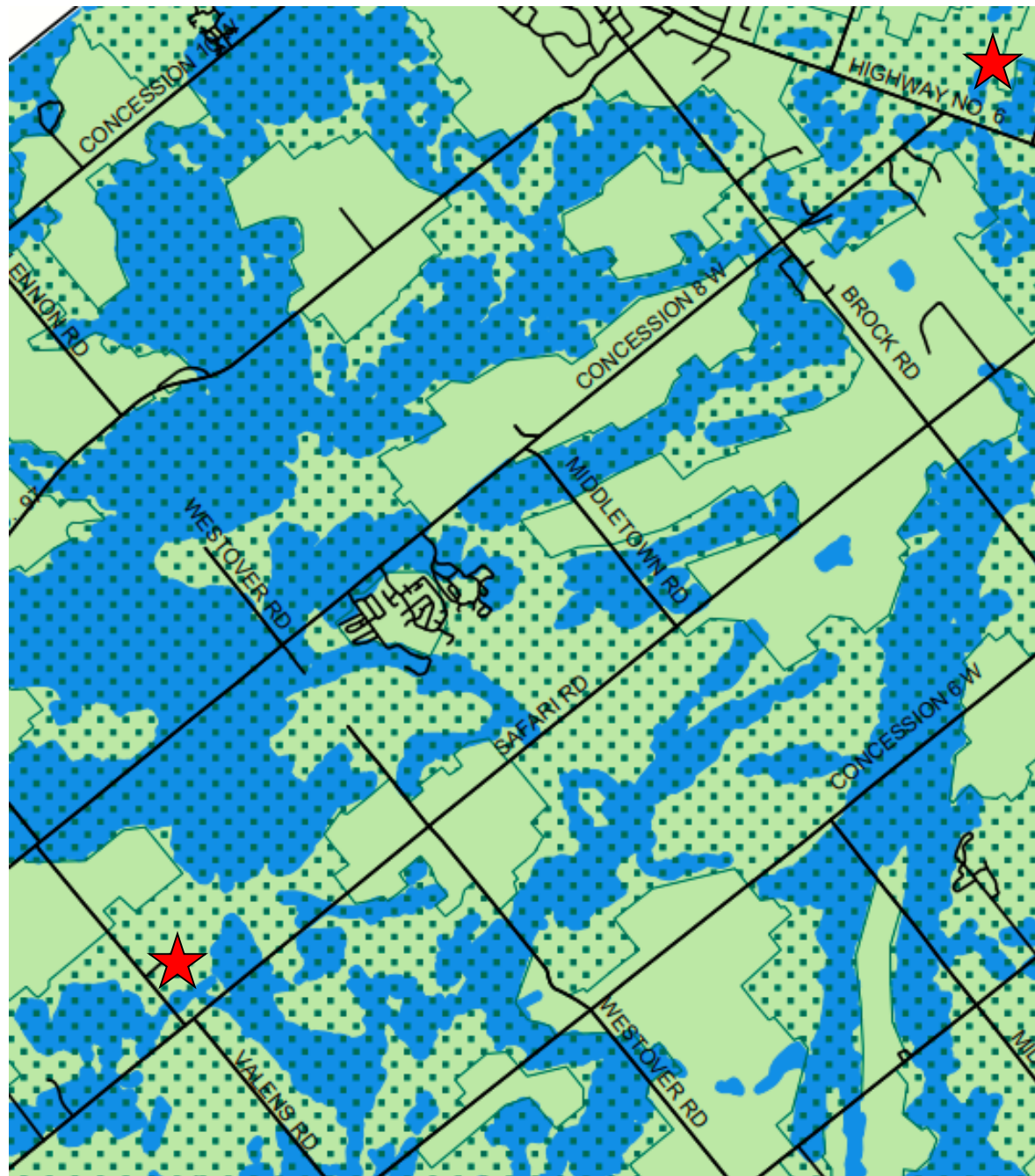
# Much wider easement

- “Enbridge Gas has determined that over 40% (12 of the 28 m total) of the required permanent easement for the project could be overlapped with the existing, previously disturbed pipeline easement. The ability to overlap the existing easement by 12 m reduces the impact to previously undisturbed land to 16 m” [5-6 lane road]



# Source mapping from Hamilton official Plan





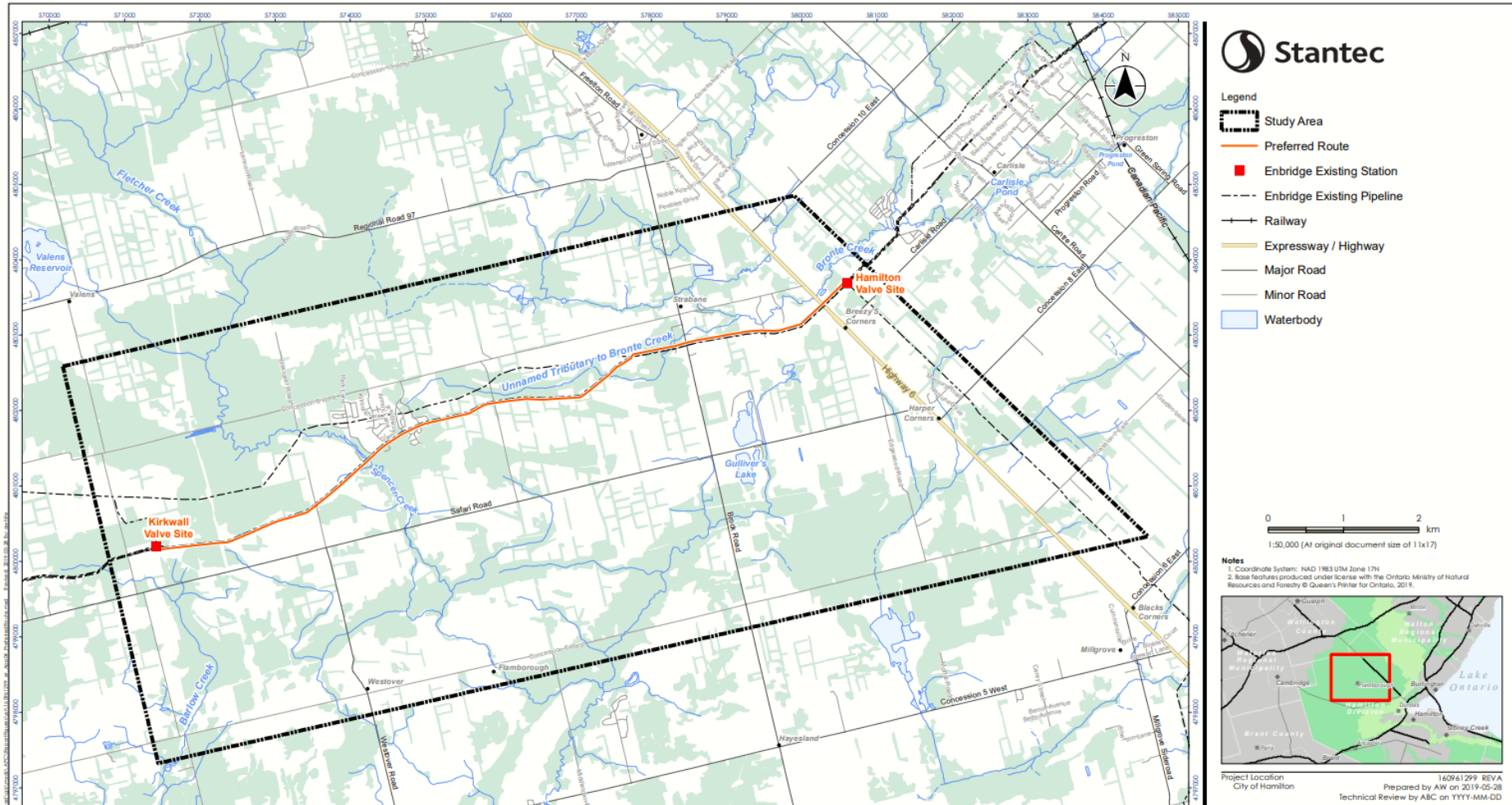
# Rural Hamilton Official Plan Schedule B-4

Detailed Natural Heritage Features  
Key Natural Heritage Feature and Key  
Hydrologic Feature Wetlands

## Legend

- Key Natural Heritage and Key Hydrologic Feature Wetlands \*
- Greenbelt Protected Countryside
- Greenbelt Natural Heritage System

# Enbridge mapping of route



# Excerpt from Enbridge EA

- “Aquifer vulnerability mapping by the Halton Region Source Protection Region indicates portions of the route are within a highly vulnerability aquifer with minimal significant groundwater recharge. There are areas of significant groundwater recharge which are present at the eastern portion of the route, in the vicinity of Brock Road, which primarily correspond to areas with coarser textured material.”

# Other Impacts

- Project cost is \$205 million
- \$120 million of that to be added to gas rates charged to Ontario users
- That equals more costs for the city, the HSR and Hamilton residents
- Municipal bans on new installations of gas residential connections being put in place

# Cities are banning natural gas in homes to save the planet

[Elizabeth Weise](#) - USA TODAY [Nov 2019]

<https://www.usatoday.com/story/news/2019/11/10/climate-change-solutions-more-cities-banning-natural-gas-homes/4008346002/>

SAN FRANCISCO – Fix global warming or cook dinner on a gas stove? That's the choice for people in 13 cities and one county in California and one town in Massachusetts that have enacted new [zoning codes encouraging or requiring all-electric new construction](#).

The codes, most of them passed since June, are meant to keep builders from running natural gas lines to new homes and apartments, with an eye toward creating fewer legacy gas hookups as the nation shifts to carbon-neutral energy sources.

The most recent came on Wednesday when [the town meeting in Brookline](#), Massachusetts, approved a rule prohibiting installation of gas lines into major new construction and in gut renovations.

For proponents, it's a change that must be made to fight climate change. For natural gas companies, it's a threat to their existence

## Gas heating ban for new homes from 2025

By Roger Harrabin  
BBC environment analyst

🕒 13 March 2019 | 🗨️

     Share

**Gas heating for new houses will be banned by 2025, the Chancellor has said, although gas hobs will still be allowed.**

# City Action Needed

- By February 10 write to the OEB re list of issues – ensure climate change included
- Ask for an ORAL hearing
- Conduct independent ecological review
- Ensure nearby residents know where blasting is expected to occur and have opportunity to comment to city
- Fix annual GHG reduction targets