



WELCOME TO THE CITY OF HAMILTON

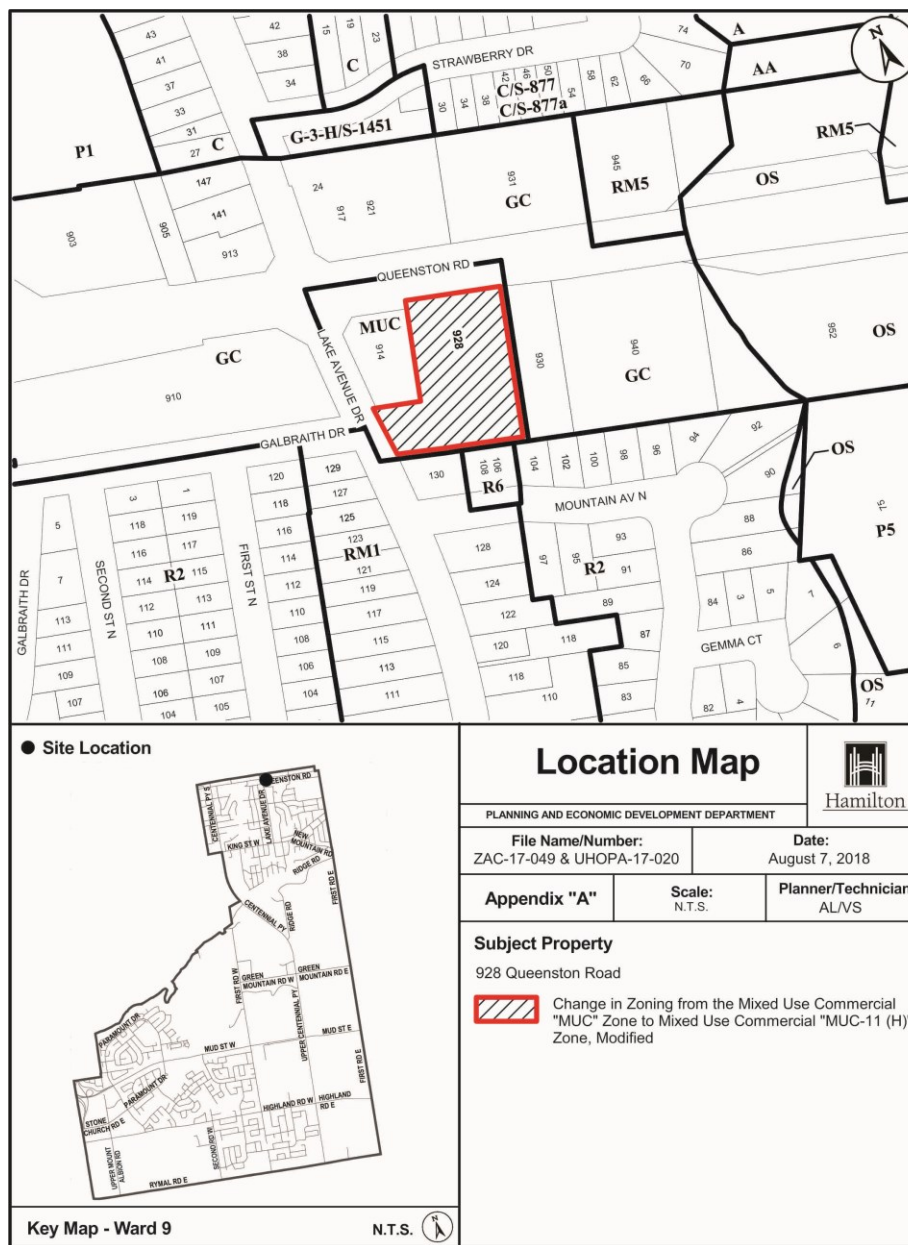
PLANNING COMMITTEE

September 18, 2018

PED18221 – (ZAC-17-049 & UHOPA-17-020)

Applications to Amend the Urban Hamilton Official Plan and City of Stoney Creek Zoning By-law No. 3692-92 for Lands Located at 928 Queenston Road, Stoney Creek.

Presented by: Adam Lucas

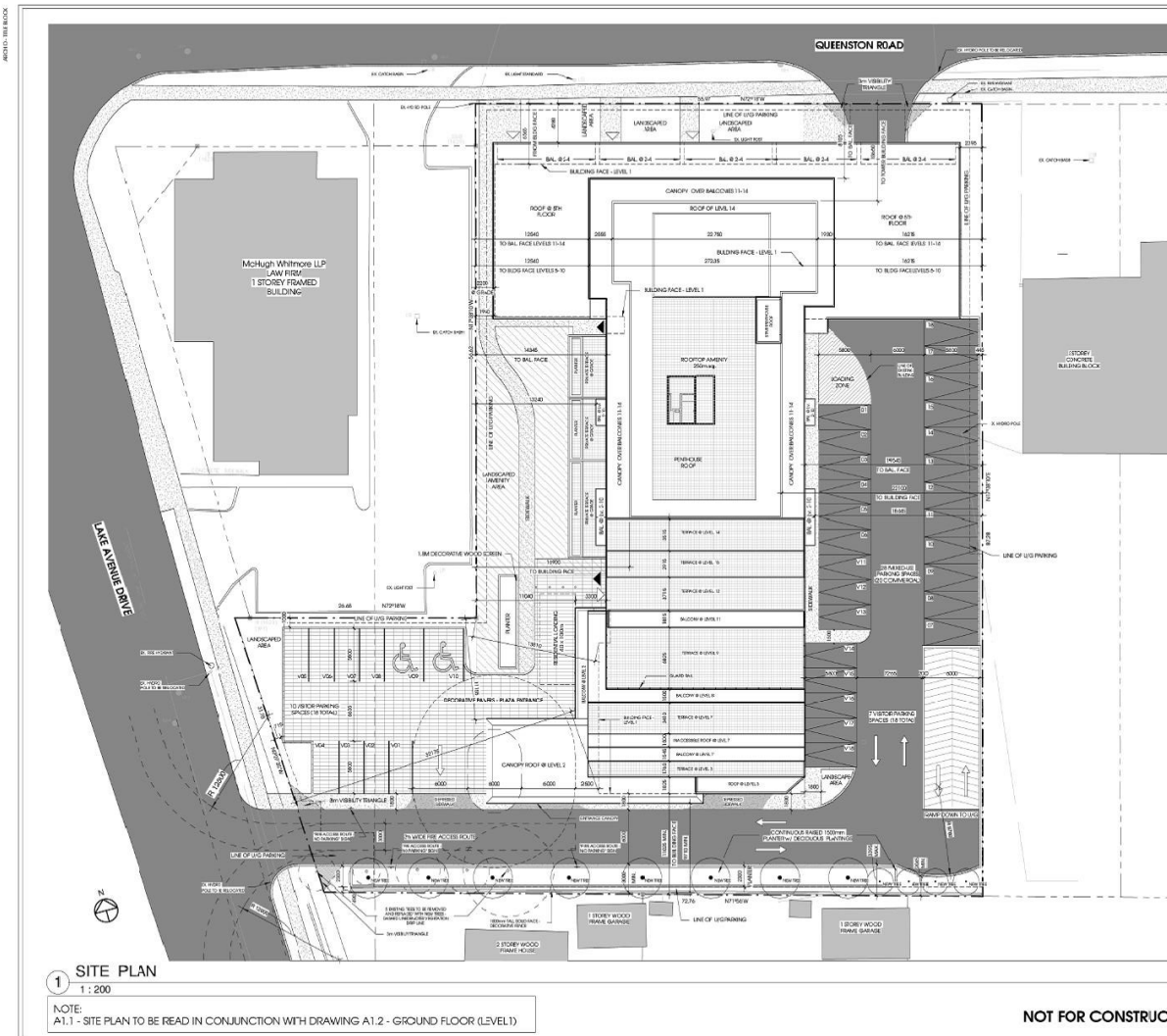




SUBJECT PROPERTY



928 Queenston Road, Stoney Creek



KEYPLAN

SITE STATISTICS

LEGAL DESCRIPTION

LOT 15
SECTION 15
TOWNSHIP OF HAMILTON
CITY OF HAMILTON

INFORMATION FROM SITE PLAN PREPARED BY SURVEYOR
AT 1:500 SCALE

BY JOHN BRETHURST, SITE 200
CONSULTATION SURVEY REPORT DATED
JANUARY 1, 2019

THIS SITE PLAN IS BASED UPON AND MUST BE READ IN
CONJUNCTION WITH SURVEY REPORT DATED
JANUARY 1, 2019

1:500 SCALE
1:500 SCALE

1:500 SCALE
1:500 SCALE

1:500 SCALE
1:500 SCALE

1:500 SCALE
1:500 SCALE

1:500 SCALE
1:500 SCALE

1:500 SCALE
1:500 SCALE

1:500 SCALE
1:500 SCALE

1:500 SCALE
1:500 SCALE

1:500 SCALE
1:500 SCALE

1:500 SCALE
1:500 SCALE

1:500 SCALE
1:500 SCALE

1:500 SCALE
1:500 SCALE

1:500 SCALE
1:500 SCALE

1:500 SCALE
1:500 SCALE

1:500 SCALE
1:500 SCALE

1:500 SCALE
1:500 SCALE

1:500 SCALE
1:500 SCALE

1:500 SCALE
1:500 SCALE

1:500 SCALE
1:500 SCALE

1:500 SCALE
1:500 SCALE

1:500 SCALE
1:500 SCALE

1:500 SCALE
1:500 SCALE

1:500 SCALE
1:500 SCALE

1:500 SCALE
1:500 SCALE

1:500 SCALE
1:500 SCALE

1:500 SCALE
1:500 SCALE

1:500 SCALE
1:500 SCALE

LINTACK ARCHITECTS
INCORPORATED



FOR SPA

OF

ARCHITECTS

INCORPORATED

1:500 SCALE

1:500 SCALE

1:500 SCALE

1:500 SCALE

1:500 SCALE

1:500 SCALE

1:500 SCALE

1:500 SCALE

1:500 SCALE

1:500 SCALE

1:500 SCALE

1:500 SCALE

1:500 SCALE

1:500 SCALE

1:500 SCALE

1:500 SCALE

1:500 SCALE

1:500 SCALE

1:500 SCALE

1:500 SCALE

1:500 SCALE

1:500 SCALE

1:500 SCALE

1:500 SCALE

QUEENSTON CONDOMINIUM
MARKAD HOLDINGS INC.
928 QUEENSTON ROAD,
HAMILTON, ON

job no. 15.044

dwg. file

dwg. by CP

scale As Indicated

date OCT 2015

dwg. title SITE PLAN

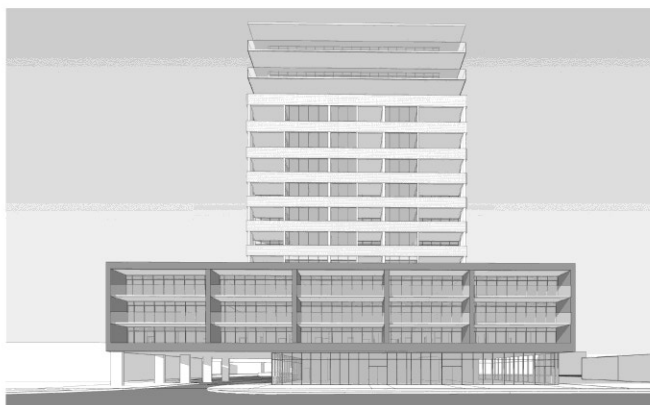
dwg. A1.1



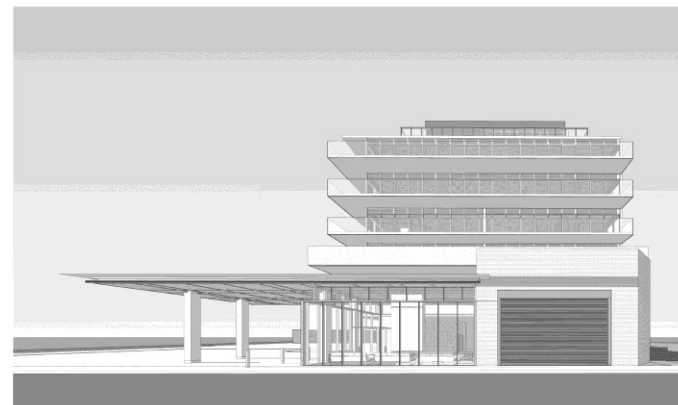
① NORTH EAST ELEVATION (FRONT)



② SOUTH WEST ELEVATION (REAR)



3 FRONT ELEVATION



4 REAR ELEVATION - VIEWED FROM PROPERTY LINE - EYE HEIGHT 1500mm

4(A)7 NOTE:
PROPOSED 1.8m TALL DECORATIVE SCREEN ON PROPERTY
WILL EFFECTIVELY BLOCK ANY VIEW OF THE TOWER AT THE
LOCATION AND ELEVATION

NOT FOR CONSTRUCTION

PED18221

Photo 1



Looking southerly on Lake Drive Avenue



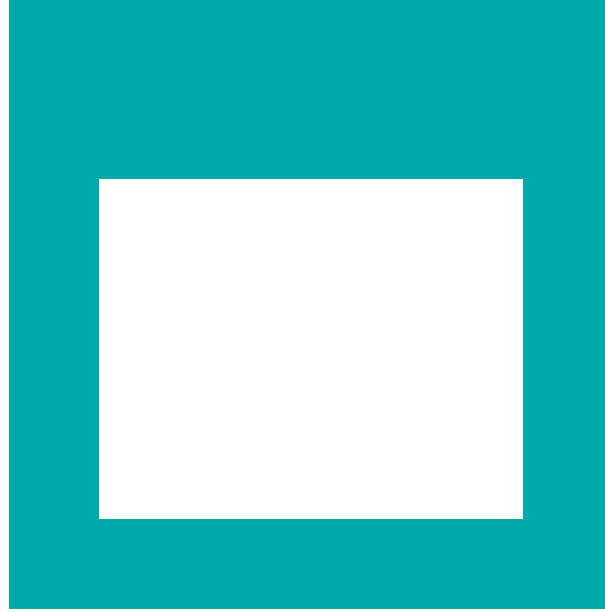
Looking northerly on Lake Drive Avenue



Looking easterly on Queenston Road



Looking westerly on Queenston Road



THANK YOU FOR ATTENDING

THE CITY OF HAMILTON PLANNING COMMITTEE