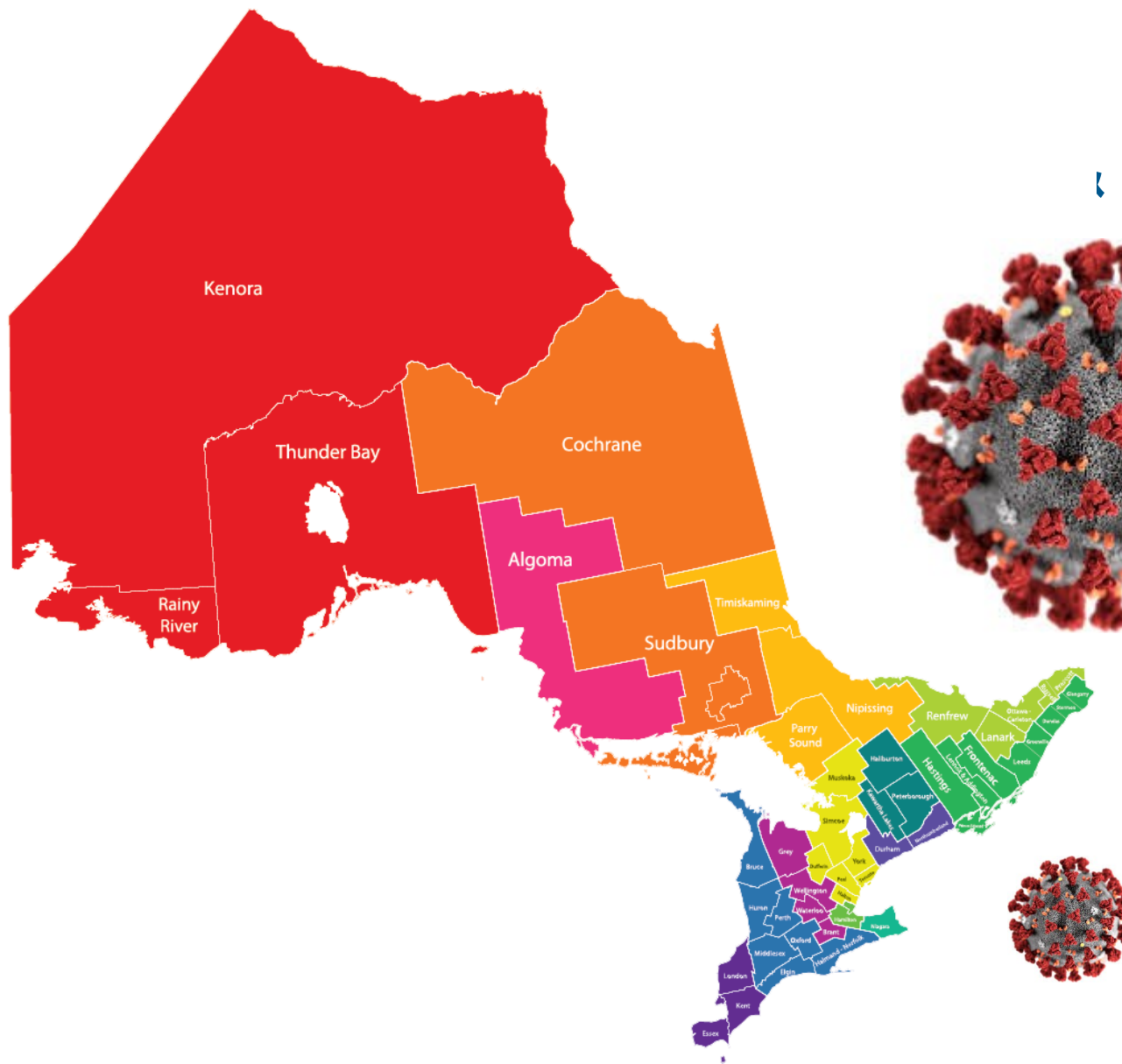


Public Health Services COVID-19 Response and Program Reopening

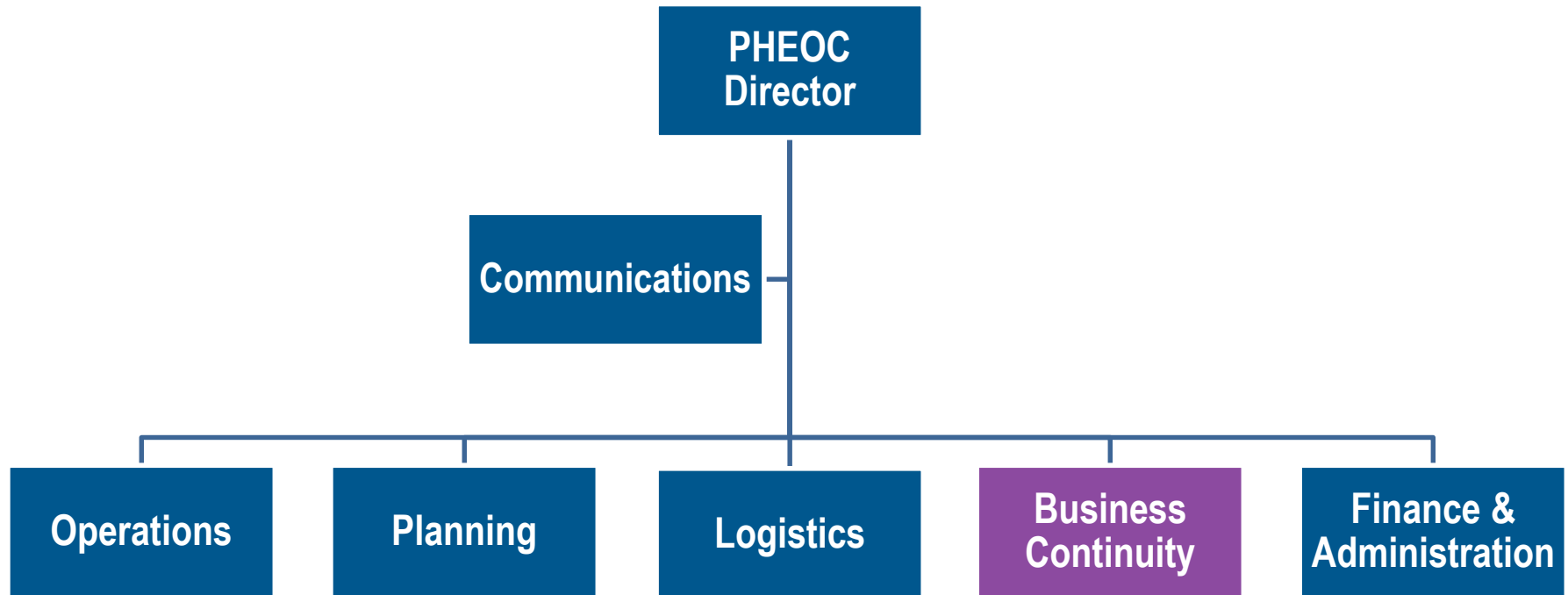
Presentation to the Board of Health
June 16, 2020

January 2020

Partial Activation (29)



Feb 11 – Full Activation



Our Journey

Key Milestones

Jan 25
First case
in Ontario

Mar 11
First death
in Ontario

**First case
in Hamilton**

Mar 12
Closure
of Ontario
schools

Mar 13
First
community
acquired
case in
Hamilton

Our Response

Jan 29
Partial
activation
of IMS

Feb 11
Full
activation
of IMS

Feb 21
Implementation
of updated
passive & active
screening

Feb 28
Hotline
activated

Mar 16
Assessment
centres
open

← Case, Contact and Outbreak Management →

4

What Public Health Is Working On



CASE INVESTIGATION

Determining where people got and may have spread COVID-19



CONTACT TRACING

Isolating and monitoring close contacts of positive cases



DATA ANALYSIS

Interpreting data to inform our local measures



PROTECTING VULNERABLE POPULATIONS

Helping to control outbreaks in long-term care homes



ANSWERING YOUR QUESTIONS

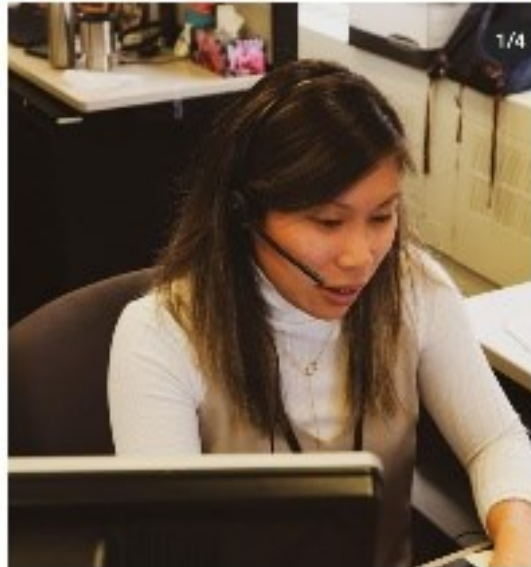
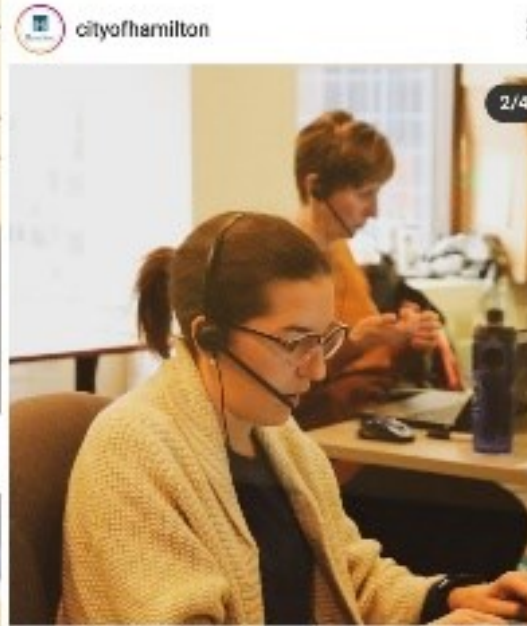
Responding to questions from the community on our COVID-19 Hotline (905-974-9848)

Case & Contact Management



6

Feb 28 – Hotline Activated



Our Journey

Key Milestones

Jan 25
First case
in Ontario

Mar 11
First death
in Ontario

**First case
in Hamilton**

Mar 12
Closure
of Ontario
schools

Mar 13
First
community
acquired
case in
Hamilton

Our Response

Jan 29
Partial
activation
of IMS

Feb 11
Full
activation
of IMS

Feb 21
Implementation
of updated
passive & active
screening

Feb 28
Hotline
activated

Mar 16
Assessment
centres
open

← Case, Contact and Outbreak Management →

Our Journey

Key Milestones

Mar 17
Provincial
emergency
declared

Mar 18
Border
closures

Mar 21
First
outbreak
at Hamilton
LTCH

Mar 24
Closure of
non-essential
workplaces
(Ontario)

**First
death in
Hamilton**

Apr 7
IPAC
audits
of LTCHs
and RHs
initiated

Apr 10
Testing
expanded

Audit
inspections
of farms
with temp
migrant
workers

Apr 17
Drive-thru
testing
centre
opened

Apr 22
Mass testing
at LTCHs
(staff and
residents)

Our Response

← Case, Contact and Outbreak Management →

Case & Contact Management



10



Tim O'Shea
@timosh99

Apr 10 – Surveillance/Congregate Settings

Week 5 of our surveillance testing program in Hamilton shelters is underway. We couldn't do this without this team of amazing Hamilton Public Health nurses who completed ~200 tests this week [#NursesWeek](#) [#COVID19](#) [#HamOnt](#)



11

Apr 11 – Drive Thru Testing



12

Our Journey

Key Milestones

Apr 27
Ontario released
Framework for Reopening

May 4
Certain businesses and workplaces allowed to open

May 19
Schools remain closed

May 20
Face masks recommended

Jun 12
Some regions in Ontario enter stage 2

Our Response

May 9
Testing of all staff at emergency child care centres

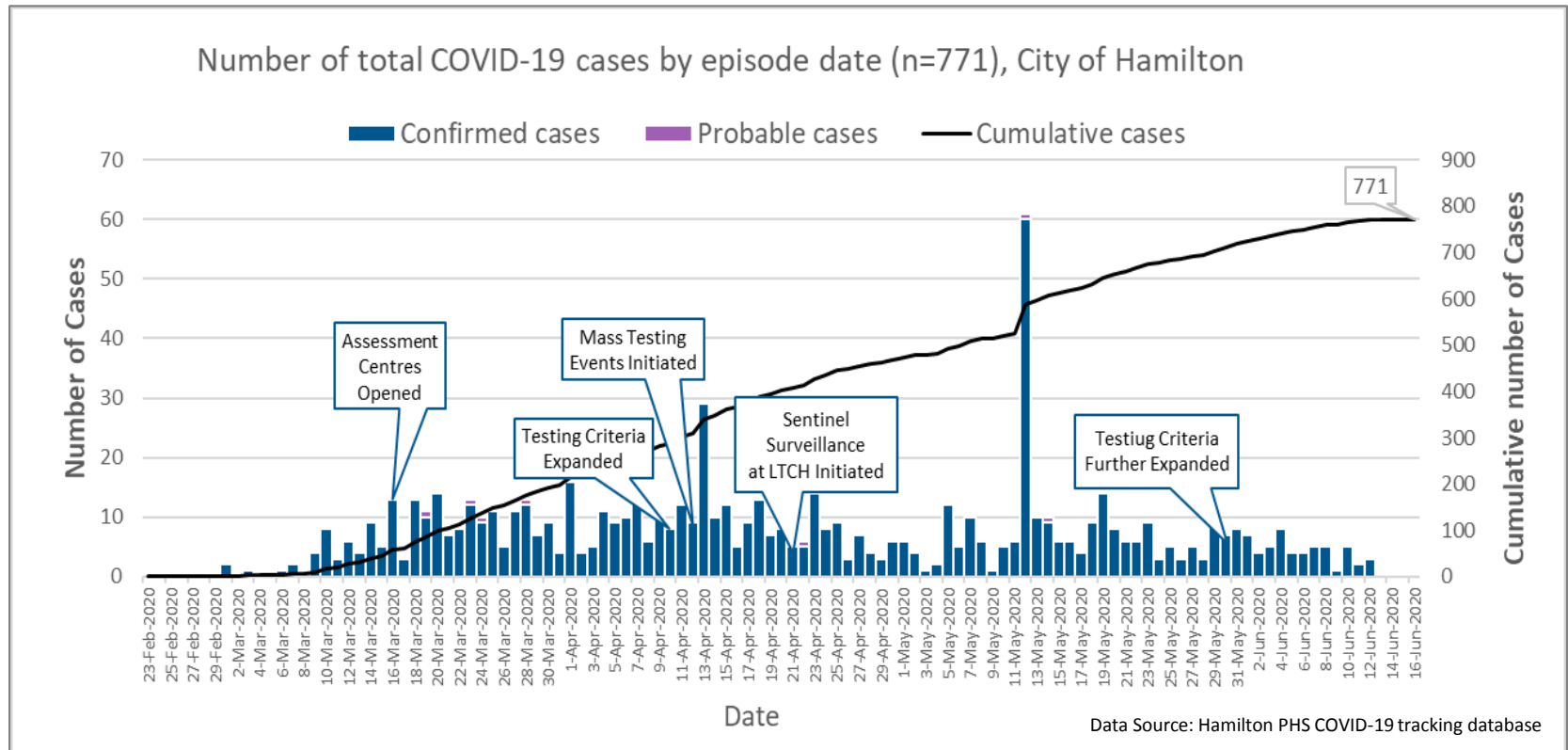
May 22
Recommendations submitted to Province re: outbreak management in congregate care settings

May 27
Post-Peak Framework shared with Council

← Case, Contact and Outbreak Management → 13

Hamilton COVID-19 Situation Report

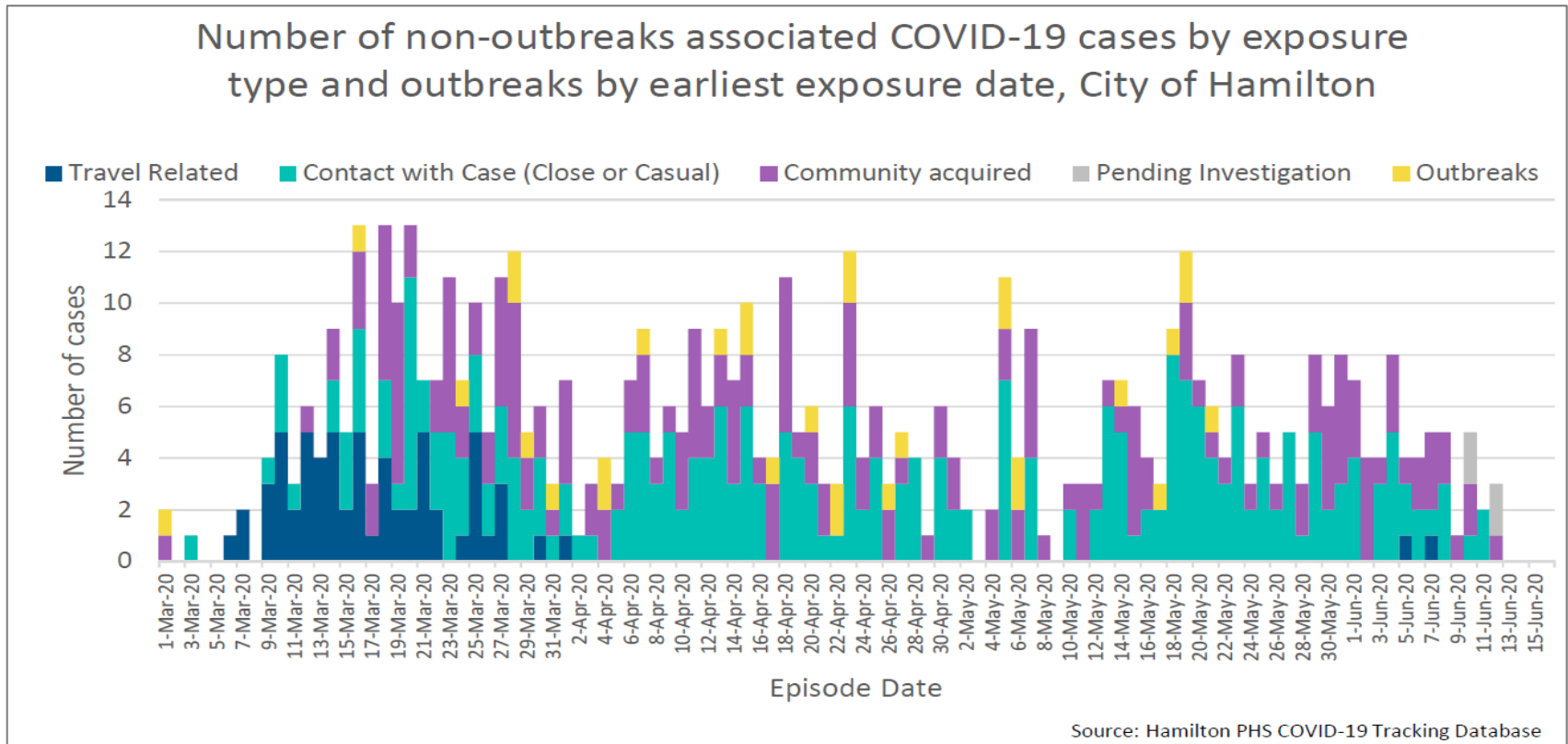
Rate of cases in the past 7 days is 5.2 per 100,000



Data current as of 9:00am June 16

Hamilton COVID-19 Situation Report

25% cases are community acquired



Data current as of 9:00am June 16

Hamilton COVID-19 Situation Report

Severity

18.2%

Cases ever
hospitalized (n=140)

15%

Hospitalizations ever in
the ICU (n=21)

42

Deaths (32 were
outbreak-associated)

82%

Cases resolved
(n=632)

Data current as of 9:00am June 16

Hamilton COVID-19 Situation Report

Public Health Capacity

24,211

Hotline calls

0%

Cases lost to
follow-up

100%

Periodic monitoring
has taken place
for all cases

> 93%

New ***cases*** reached
within 24 hrs
(May 14 – Jun 15)

> 90%

New ***contacts***
reached within 24 hrs
(May 12 – Jun 15)

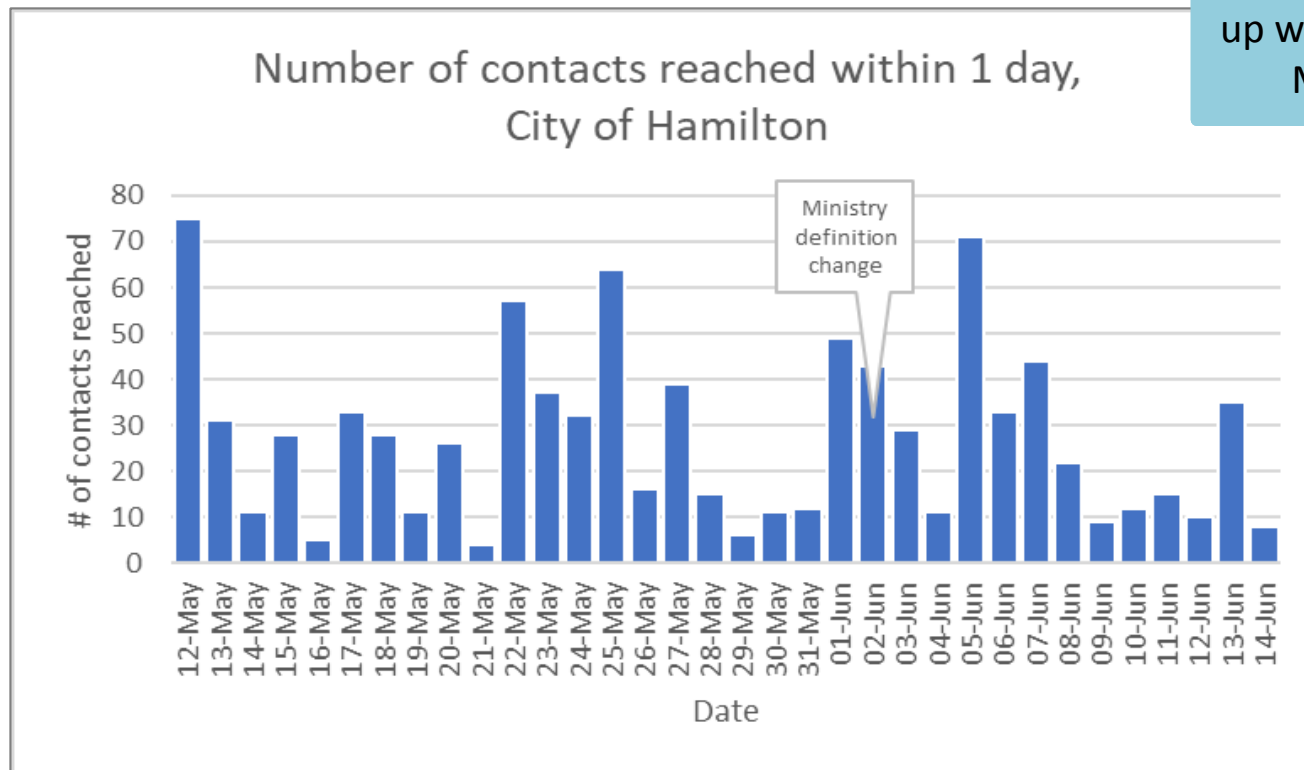
Data current as of 9:00am June 16

Hamilton COVID-19 Situation Report

Public Health Capacity

932

Contacts were followed up with by PHS between May 12 – Jun 14



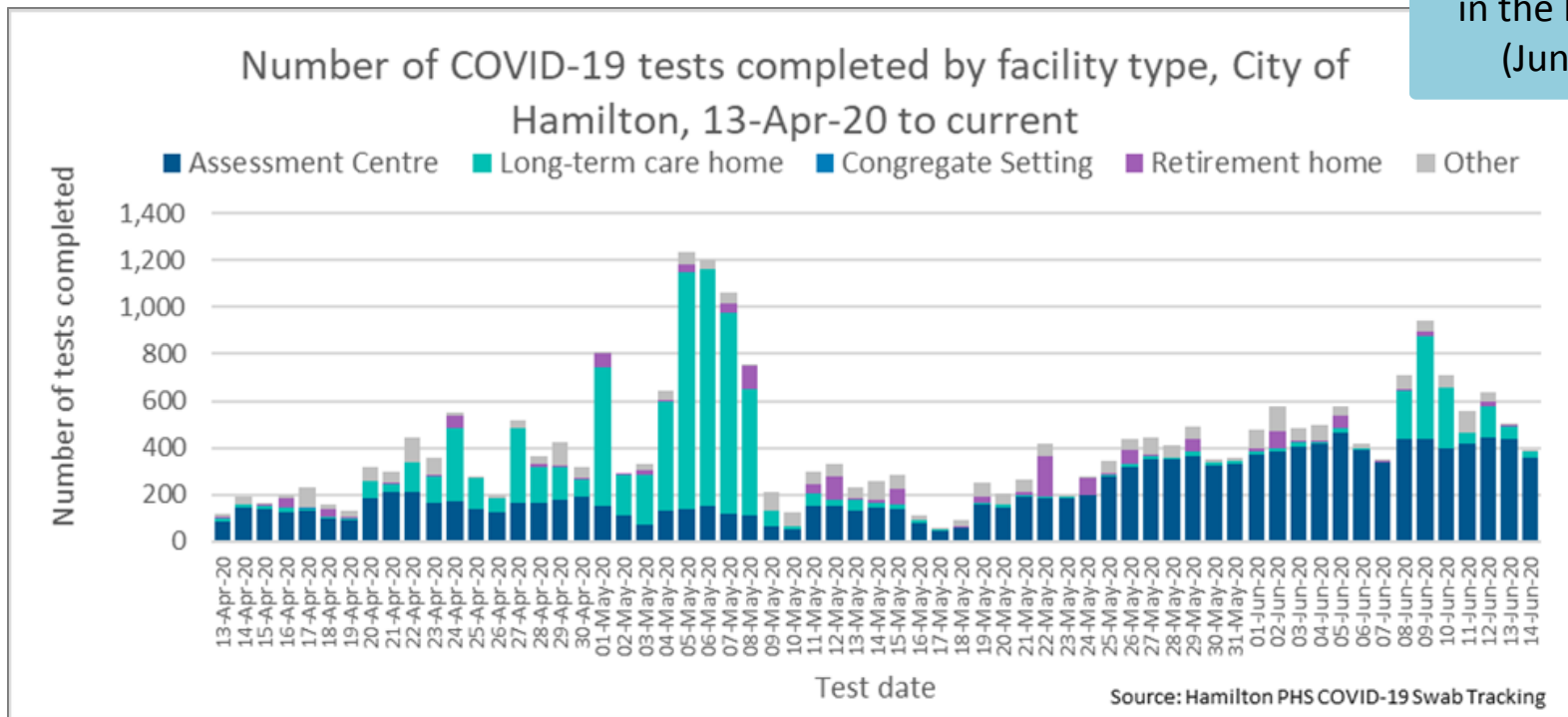
Data current as of June 14

Hamilton COVID-19 Situation Report

Testing Capacity

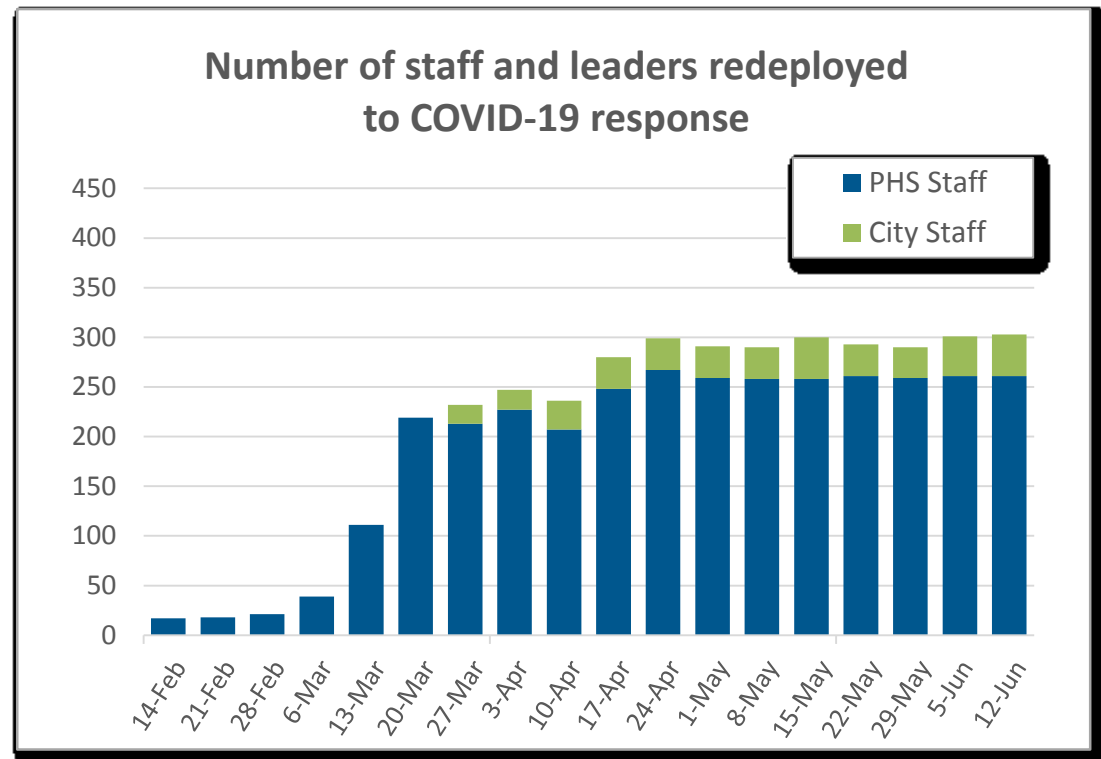
4,697

Tests completed
in the last 7 days
(Jun 9 – 15)



Hamilton's COVID Dedicated Staff

Currently deployed:



Data current as of 9:00am June 15

Communications

Social Media

- 200 Tweets on COVID since end of January
- 30 Instagram posts

Web Page Visits

www.hamilton.ca/coronavirus

- Launched March 25, 2020
- Total Page Views: 1,451,320

Mar 11 – Apr 1	279, 423 total page views
Apr 2 – 8	202, 713 total page views
Apr 9 – 19	248, 056 total page views
Apr 20 – 26	119, 369 total page views
Apr 27 – May 3	106, 074 total page views
May 4 – 10	100, 310 total page views
May 11 – 17	101, 513 total page views
May 18 – 24	102, 207 total page views
May 25 – 31	101, 082 total page views
June 1 – 7	90, 573 total page views



TAKE CARE OF YOUR MENTAL HEALTH, TOO!

This isn't easy. Being apart from others and altering our daily routines has impacted everyone's life. Accept that stress and being anxious are normal feelings, and reach out if you need help.



KEEP IN TOUCH

Use video chat, social media, email or phone to keep in touch with family and friends.



YOU ARE NOT ALONE

If you or your family are having a hard time or are in crisis, call.

**COAST: 905-972-8338 or
KIDS HELP PHONE:
1-800-668-6868**



PRACTICE SELF-CARE

Go outside for a walk if you're able, try deep breathing and practice mindfulness, and get proper rest and sleep.



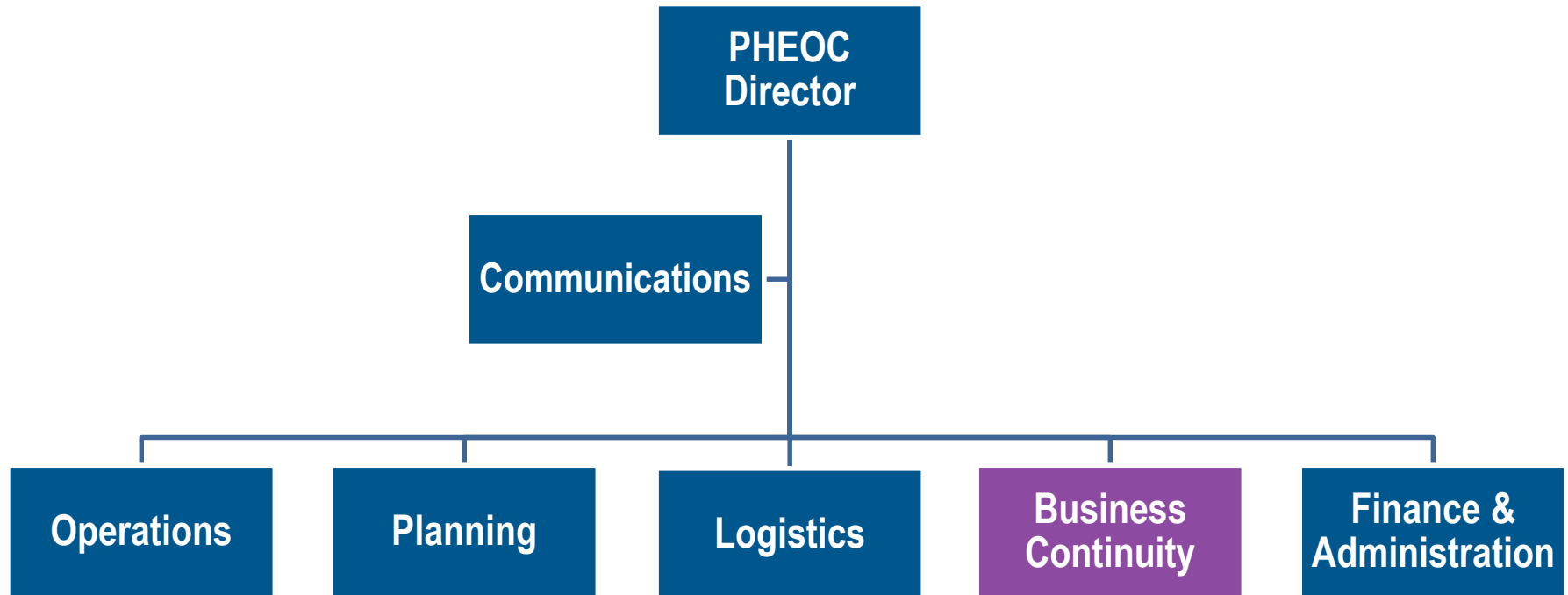
UNPLUG

It is really important to take breaks from media, social media and the internet. Find balance.

Performance Metrics Framework

	Virus Spread and Containment	Health System Capacity	Public Health System Capacity	Incidence Tracking Capacity	Supports for Vulnerable Populations
Purpose	Ensures loosening of measures is appropriately timed with the progression of the epidemic in Ontario	Ensures there is an effective response to any potential case resurgence	Ensures there is an effective public health response to any potential case resurgence	Ensures that any potential resurgence in cases can be identified promptly	Ensures there is an effective public health response to protect and support individuals most at risk
Indicators	<ul style="list-style-type: none"> 7-day moving average of daily new cases (non-institutional) by specimen date % of new cases that are non-epi linked 7-day moving average of daily new hospitalized cases New and cumulative # of institutional and congregate care settings with outbreak 	<ul style="list-style-type: none"> % of occupied acute care beds % of occupied ICU beds % of occupied ICU beds with ventilators Days of personal protective equipment 	<ul style="list-style-type: none"> % of newly reported cases reached within 24 hours of reported date % of newly identified contacts reached within 24 hours of contact ID date Mean # of close / high risk contacts per case # of staff absent per week # of OT hours per week 	<ul style="list-style-type: none"> Testing rate per 100,000 % of tests with a turnaround time of 24/48 hours % positivity % of individuals who were tested within 24 hours of symptom onset 	<ul style="list-style-type: none"> Mental health related ED visits Police response to person in crisis Substance misuse related ED visits Paramedic incidents for suspected opioid overdose # of naloxone kits distributed Violence related ED visits Police response to domestic violence ED visits related to social impacts & environmental exposures

PHS IMS Structure



Essential and Critical Services

- Alcohol, drugs and gambling services
- Breastfeeding support
- Child and adolescent services
- Case and contact management for communicable diseases
- Emergency dental services
- Home visits for babies, children, and families
- Mental health and street outreach services
- Naloxone distribution
- Rabies investigations
- Urgent health hazard complaint investigations
- Vaccine management and delivery

Reopening PHS Programs & Services

Risk Assessment Framework

Criteria

- Impact of prolonged discontinued service on the health & safety of citizens and clients
- Staff safety
- Capacity
- PPE requirements

High	Medium	Low
Immediate action is required to reduce risk.	Risk is currently moderate, but resume activity as soon as control measures allow.	Restart once changes to public health measures allow programs to resume.

Reopening PHS Programs & Services

Phase 1 PHS reopening:

- Dental Clinics – additional emergency treatment capacity
- Food Safety – inspections of high-risk food premises, farmers markets, food trucks
- Residential Care Facility inspections
- Harm Reduction – street health clinic
- Health Hazards – vector borne diseases



2020 PHS Strategic Priorities

1. **Healthy Weights**
2. **Mental Health & Addictions**
3. **Climate Change**
4. **Health Equity**



Source: NCCMT

Key Decision

How do we best organize and resource in order to:

- *Provide OPHS and other programs and services*
- *Continue to respond to the evolving COVID-19 situation in an effective and timely manner*

A flexible and responsive approach is critical

- Staff to bring back the projected staffing and budget impacts to respond to COVID-19 and provincial directives through the remainder of 2020 (and likely 2021)
 - Budget impacts to date \$1.6M
 - Estimated impacts ~128 (17.7) FTE / \$2.9M for the remainder of 2020
 - Estimated annualized impacts ~ \$9.4M
 - Bring back to July BOH

May 9 – Testing of Staff at Emergency Child Care Centres



City of Hamilton ✓ @cityofhamilton · May 12

Great teamwork within the Greendale Early Learning and Child Care Centre, where staff are providing free child care to emergency and front-line essential staff - one of our child care providers sent a nice spring bouquet for the nurses on site. ❤️ #HamOnt



31

Apr 22 – Long-Term Care Home Testing



City of Hamilton ✓ @cityofhamilton · Apr 28

THANK YOU to our Public Health staff working on the COVID-19 Outbreak Unit for working tirelessly to help get our most vulnerable people tested, working with institutions and supportive housing to help manage COVID-19 outbreaks and so much more. [#DailyGratitude](#) [#HamOnt](#)



32



City of Hamilton ✓ @cityofhamilton · May 20

THANK YOU to the Public Health Inspectors for continuing to support the business continuity of food premises. You are helping to maintain food safety during this time! [#DailyGratitude](#) [#HamOnt](#)



4



26





City of Hamilton ✓ @cityofhamilton · May 12

Great teamwork within the Greendale Early Learning and Child Care Centre, where staff are providing free child care to emergency and front-line essential staff - one of our child care providers sent a nice spring bouquet for the nurses on site. ❤️ #HamOnt



↻ 12

♡ 62

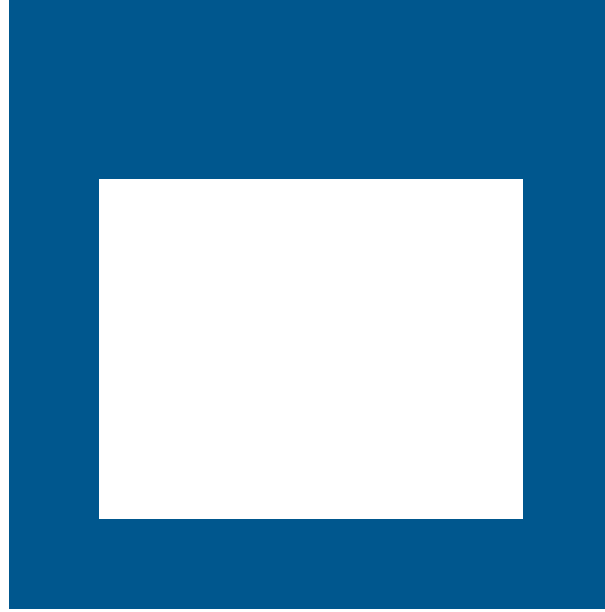




City of Hamilton  @cityofham... · 2h 

A special THANK YOU to our Public Health staff responsible for answering and responding to over 5,500 phone calls to the Hamilton COVID-19 Hotline. You make us so proud! [#HamOnt](#)





QUESTIONS?