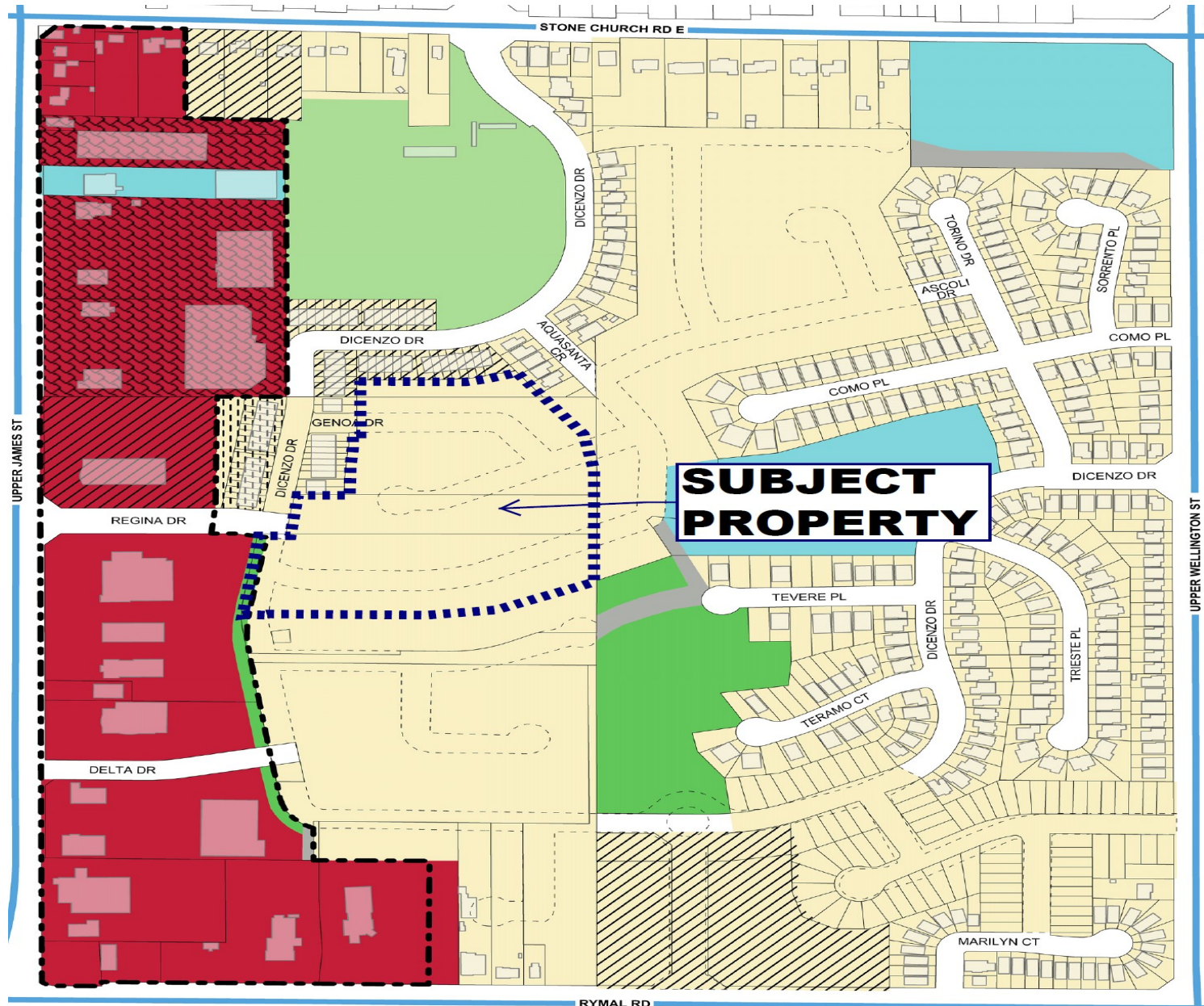


**PRESENTATION TO
PLANNING COMMITTEE**

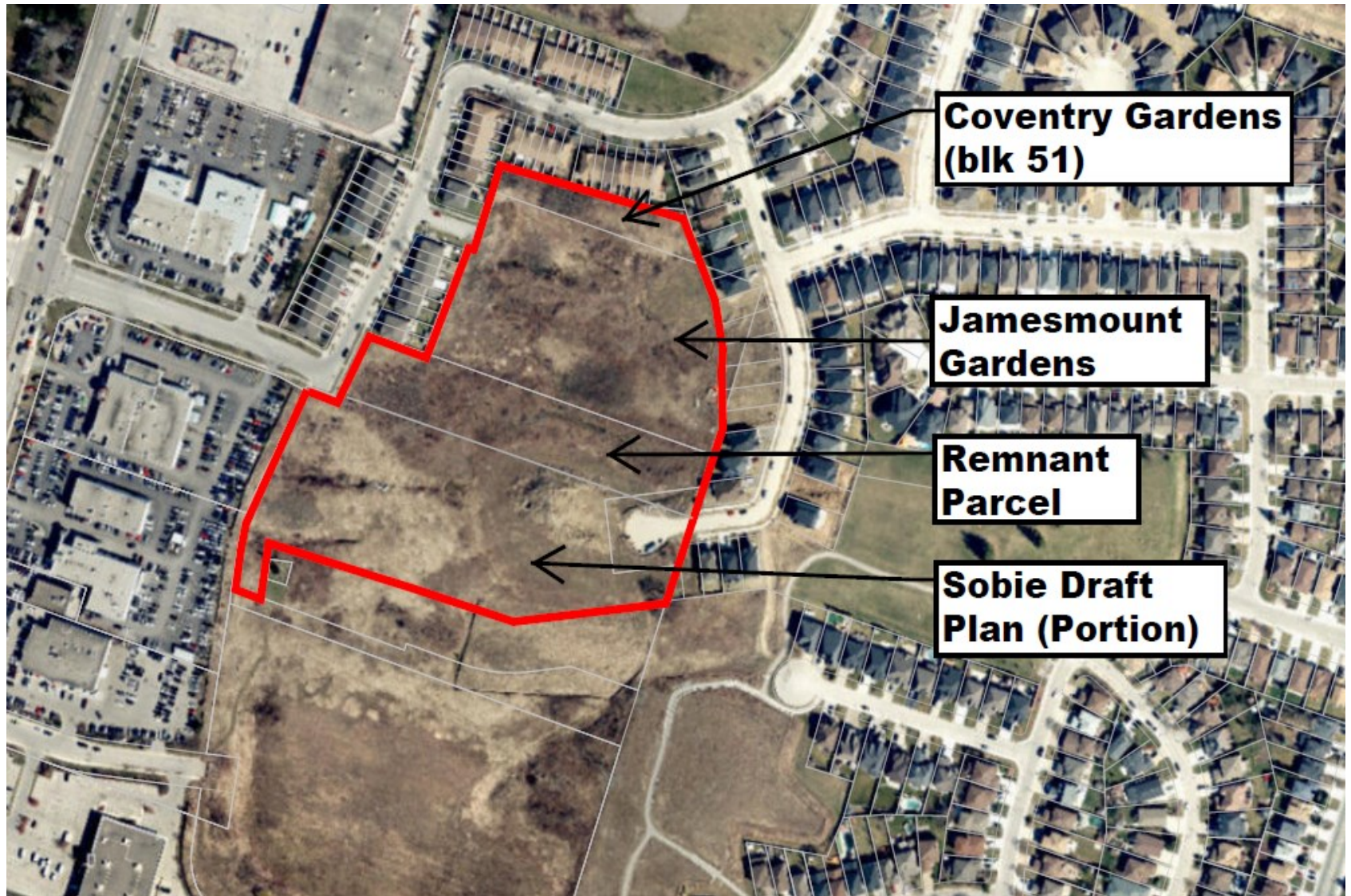
**JAMESMOUNT EXTENSION
DRAFT PLAN OF SUBDIVISION
UPPER JAMES ST. & GENOA DR.**



RYCKMAN NEIGHBOURHOOD



SITE CONTEXT



**Coventry Gardens
(blk 51)**

**Jamesmount
Gardens**

**Remnant
Parcel**

**Sobie Draft
Plan (Portion)**

STREET 'TH

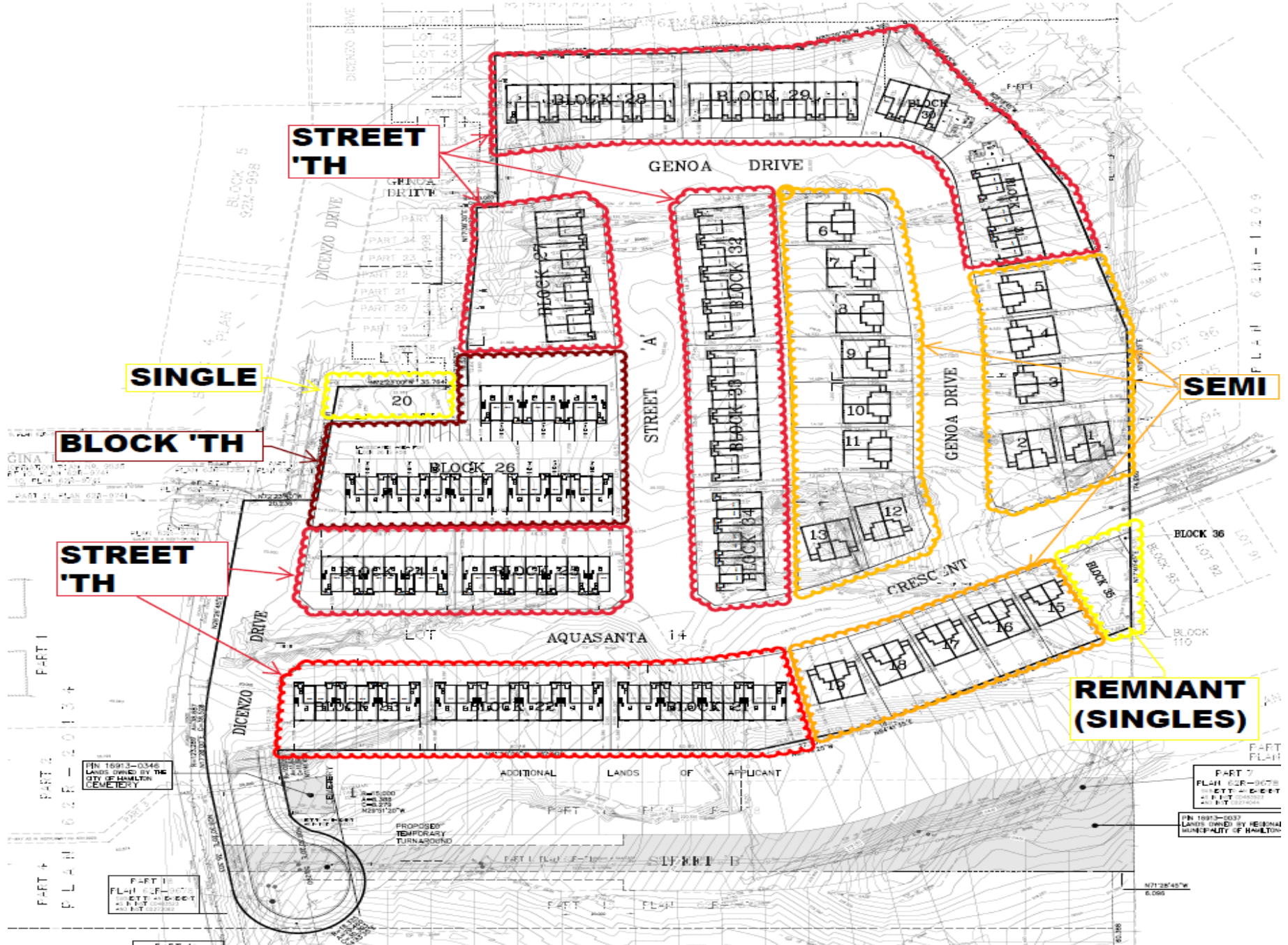
SINGLE

BLOCK 'TH

STREET 'TH

SEMI

REMNANT (SINGLES)



PART 1
PLAN 021-2013-4

PART 2
PLAN 021-2013-4

PART 3
PLAN 021-2013-4

PART 4
PLAN 021-2013-4

PART 5
PLAN 021-2013-4

PART 6
PLAN 021-2013-4

PN 16913-0346
LANDS OWNED BY THE
CITY OF HAMILTON
CEMETERY

PART 10
PLAN 021-2013-4
LANDS OWNED BY THE
CITY OF HAMILTON

PART 7
PLAN 021-2013-4
LANDS OWNED BY THE
CITY OF HAMILTON

PN 16913-0337
LANDS OWNED BY REGIONAL
MUNICIPALITY OF HAMILTON

ADDITIONAL LANDS OF APPLICANT

PROPOSED
TEMPORARY
TURNAROUND

STREET 'B'

N212°45'W
6.000

60.388

QUESTIONS?

