

HOPA

P O R T S

PIER 12-15 MODERNIZATION



INFRASTRUCTURE IMPROVEMENT

\$35 million in infrastructure improvements to one of the oldest areas of the port lands



NEW INVESTMENT

Leveraged private sector investment estimated to be in excess of \$50M



NEW JOBS

120+ jobs on-site; growing as a result of this expansion



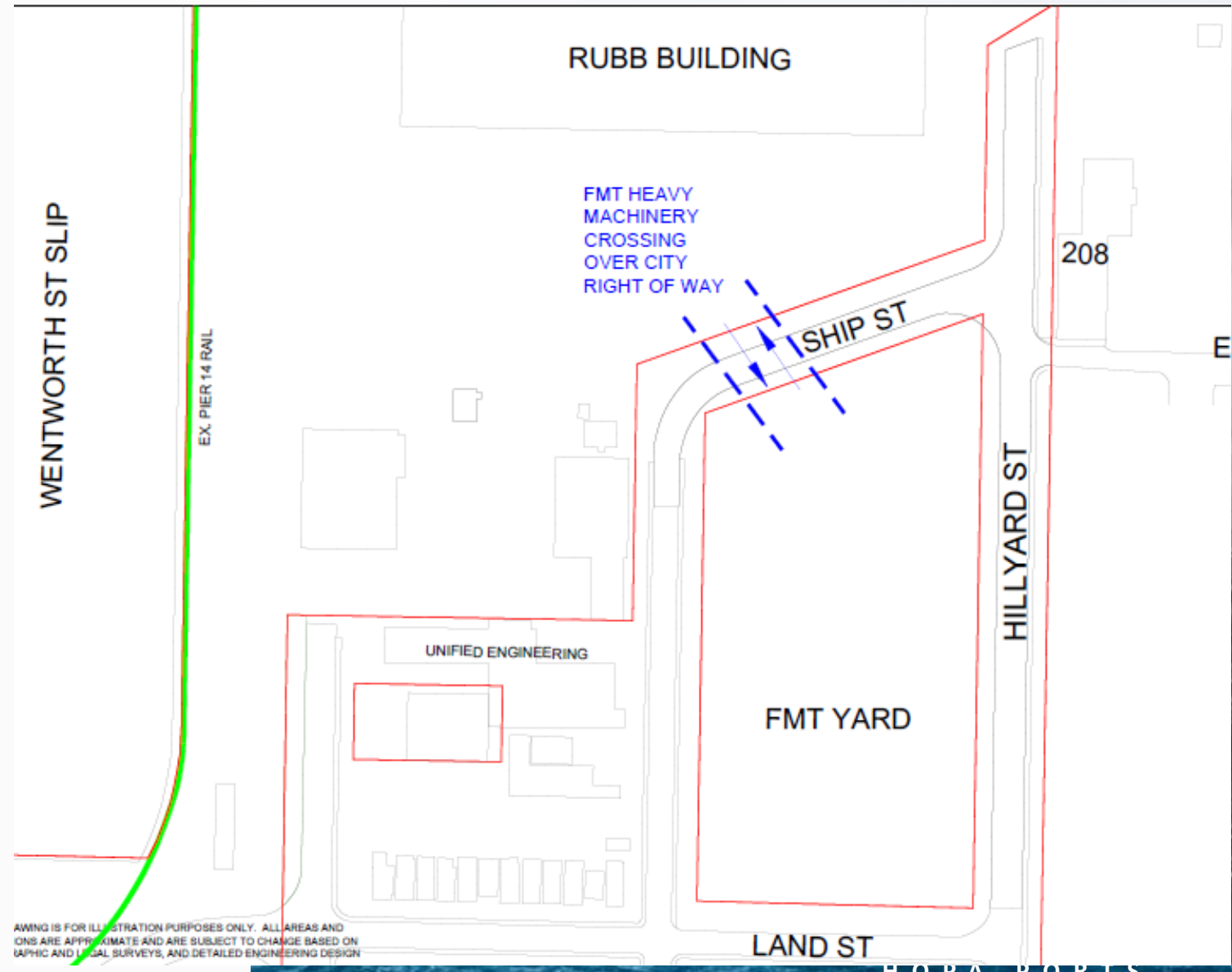
ABOUT FMT & AREA BUSINESSES

- 120 employees and growing
- Critical infrastructure for Canadian manufacturers
- Variety of cargoes handled on site including bulk, break-bulk and project cargo



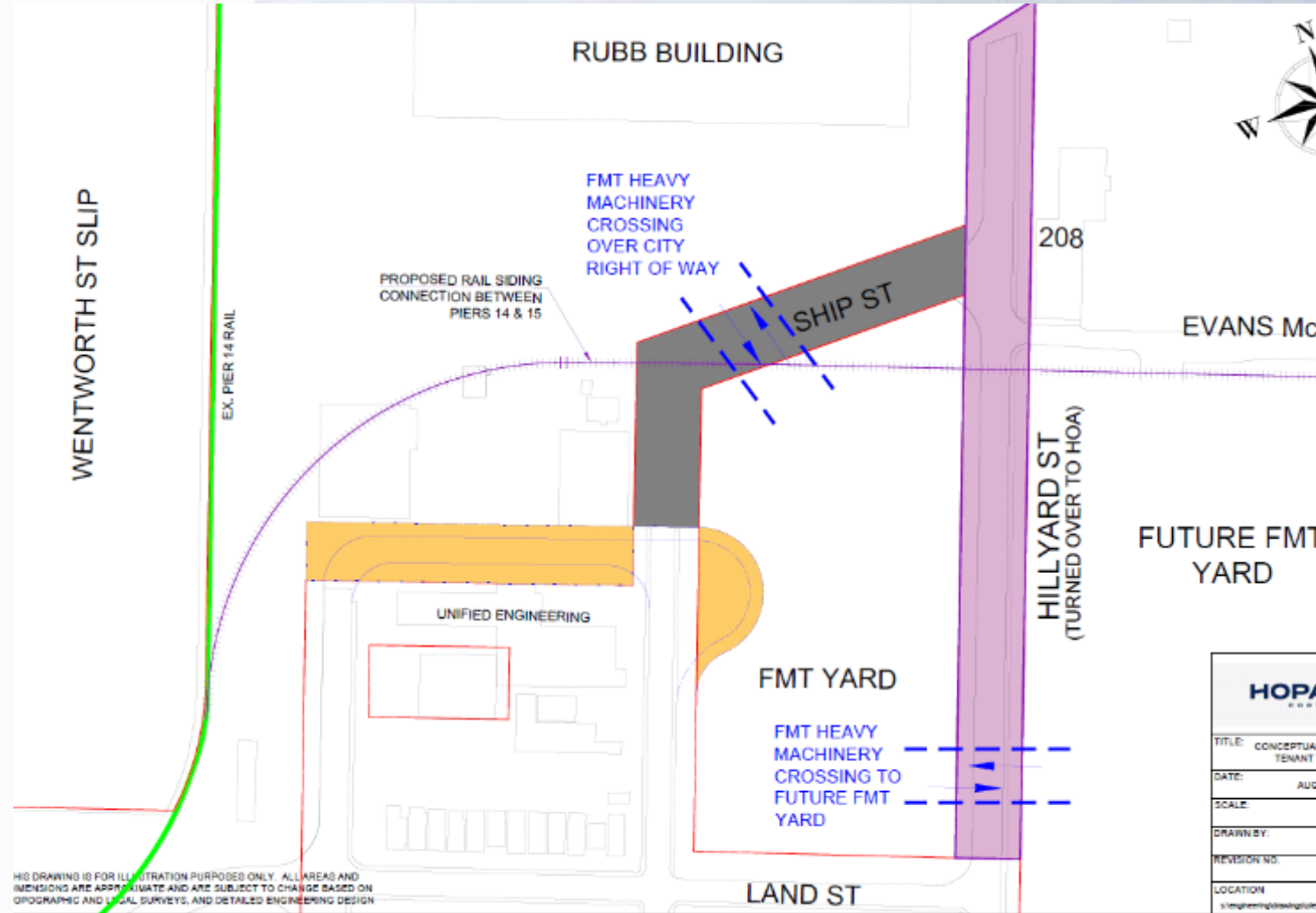
HOW THE AREA FUNCTIONS NOW

- Ship and north portion of Hillyard used almost exclusively for port access
- Area non-port companies use on-street parking
- Area non-port companies require truck access and turning
- Heavy equipment crossing Ship St. between FMT main & auxiliary yard



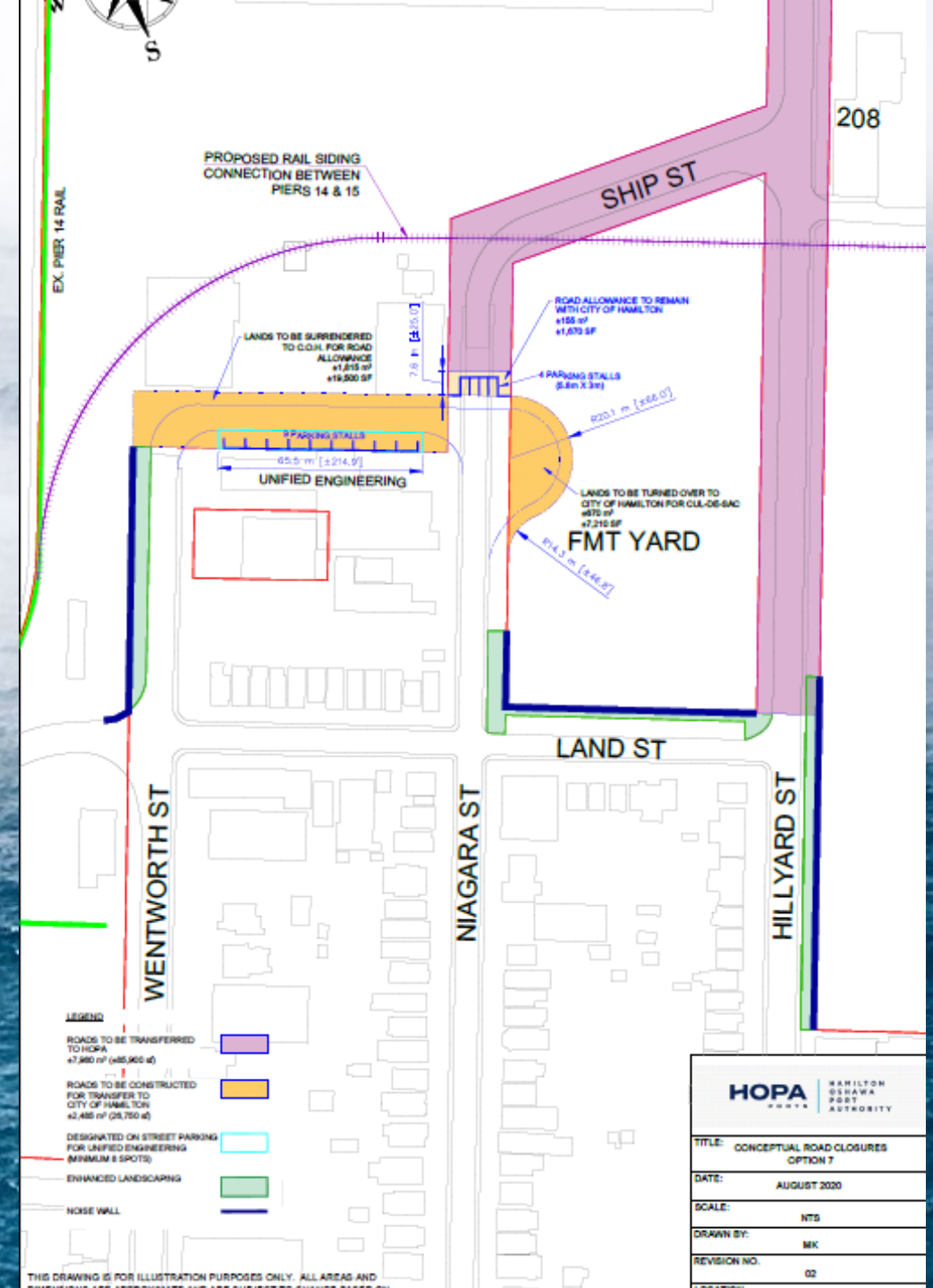
IMPROVEMENTS TO PORT OPERATIONS

- Creates a larger, less fragmented footprint for FMT operations
- Ability to connect rail infrastructure between Piers 14 and 15
- Improves operational efficiency and creates rail redundancy



NEW AREA FUNCTIONALITY

- Streamlined traffic flow: new connection for all users between Niagara and Wentworth (yellow)
- Reduced multi-point turns and ease of truck turning via partial cul-de-sac
- Maintain parking for area businesses
- New perimeter interface with noise walls and enhanced landscaping



CONSULTATION & POSITIVE OUTCOMES

- HOPA has been working with City of Hamilton staff to design a solution that works for all parties
- City of Hamilton no longer responsible for maintenance
- Improves transportation infrastructure for truck and rail
- Helps grow a Hamilton business, and the businesses that rely on FMT for logistics

