

Public Health Services (PHS) COVID-19 Situation Report and Status of Programs

Presentation to the Board of Health
October 19, 2020

COVID-19 Situation Report

Overview

1. Case Activity
 - Phases of activity
 - Trend of reported cases
 - Age distribution

2. Outbreak Activity
 - Facility breakdown
 - Declared outbreaks

1. Case Activity

Phases of COVID-19 in Hamilton

Wave 1

Phase 1: Pre-Peak 10 – 31 Mar

- Travel acquisition
- US (+ North America), Europe most common destinations
- First case reported, first outbreak commenced
- First source undetermined (“community-acquired”) case reported 22 Mar
- 111 cases reported to Hamilton Public Health
- 2 deaths
- 14 hospitalized
- 699 tests completed at Hamilton Assessment Centres

Phase 2: Peak 1 Apr – 31 May

- Outbreak and contact acquisition
- 32 outbreaks commenced
- Resulted in spikes in cases 70+ years
- Increase in young cases (20-29) late May
- 568 cases reported to Hamilton Public Health
- 36 deaths
- 121 hospitalized
- 9,060 tests completed at Hamilton Assessment Centres

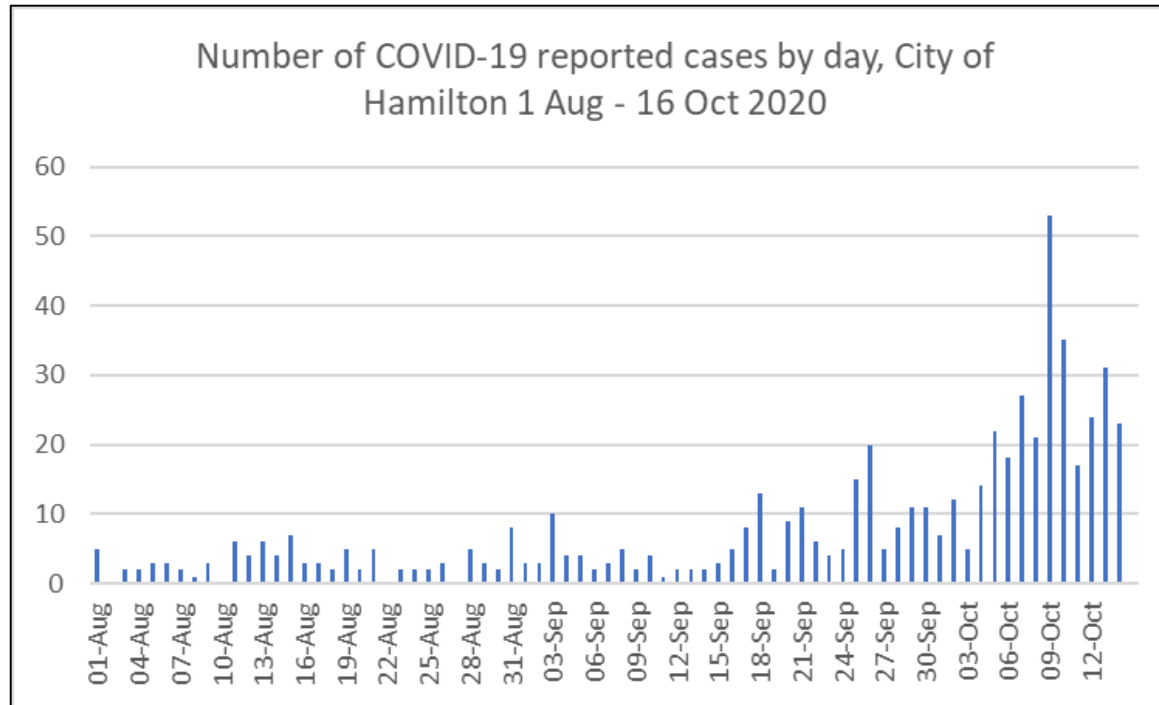
Phase 3: Post-Peak 1 Jun – Jul 31

- Community and contact acquisition
- One outbreak commenced
- Provincial re-opening activities
- Household spread an issue, increase in socialization
- 211 cases reported to Hamilton Public Health
- 7 deaths
- 8 hospitalized
- 29,146 tests completed at Hamilton Assessment Centres

Phase 4: Pre-Peak 1 Aug – current

- Community and contact acquisition, outbreaks increasing
- Ten outbreaks commenced
- Ongoing household spread, socialization, and community exposures contributing to an increase in local case activity
- First cases in local schools
- 590 cases reported to Hamilton Public Health
- 2 deaths
- 13 hospitalized
- 55,624 tests completed at Hamilton Assessment Centres

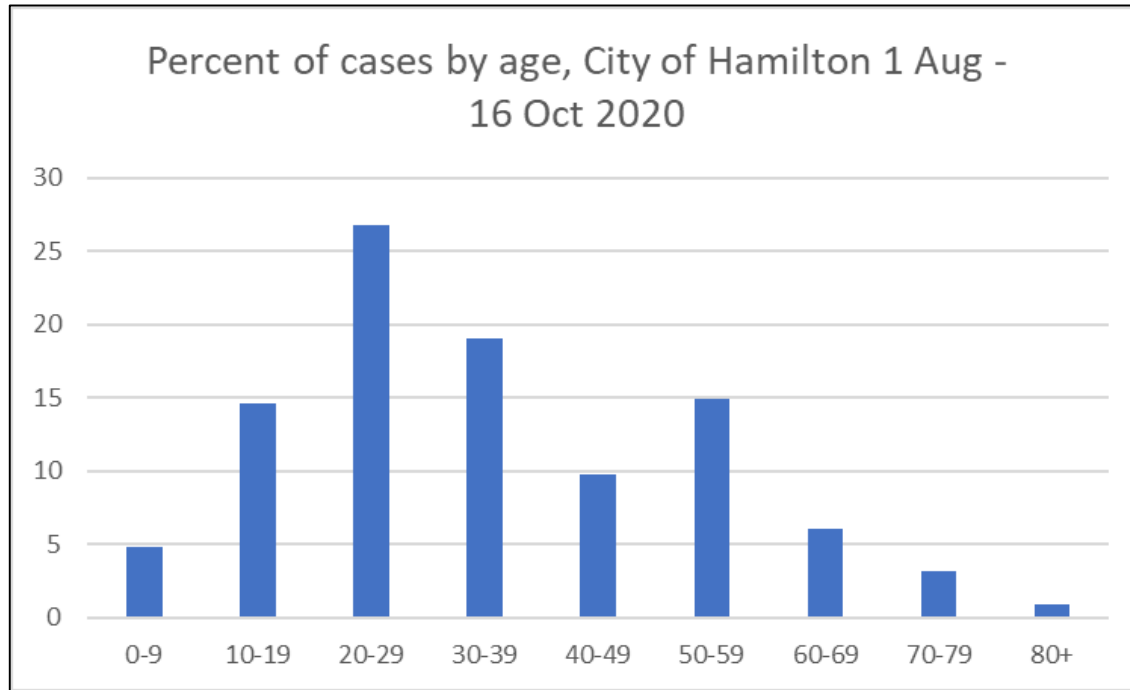
Reported Cases



Key Messages

- COVID-19 case activity has increased in the City of Hamilton during Phase 4 (since August 1, 2020)
- Since August 1, 2020, cases reported per day has increased from ~1 to 27

Age Distribution

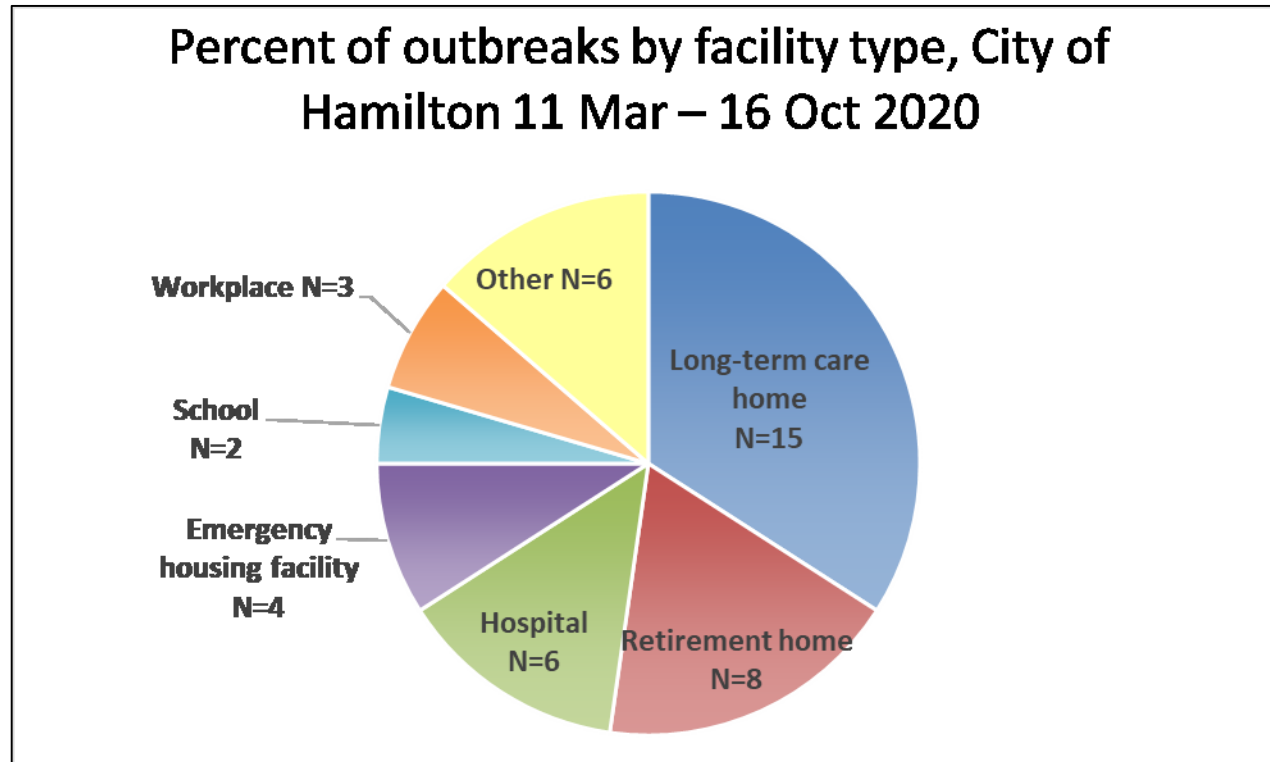


Key Messages

- In Phase 4, the highest percentage of cases has occurred in the 20-29 year-old age group
- The fewest cases have been reported in the 80+ year-old age group

2. Outbreak Activity

Outbreaks (Cumulative)



Key Messages

- The largest percentage of outbreaks have been in long-term care homes (N=15, 34%)
- The largest number of outbreak cases have been in retirement homes (N=161)

Recent Outbreaks (August 1 – October 16, 2020)

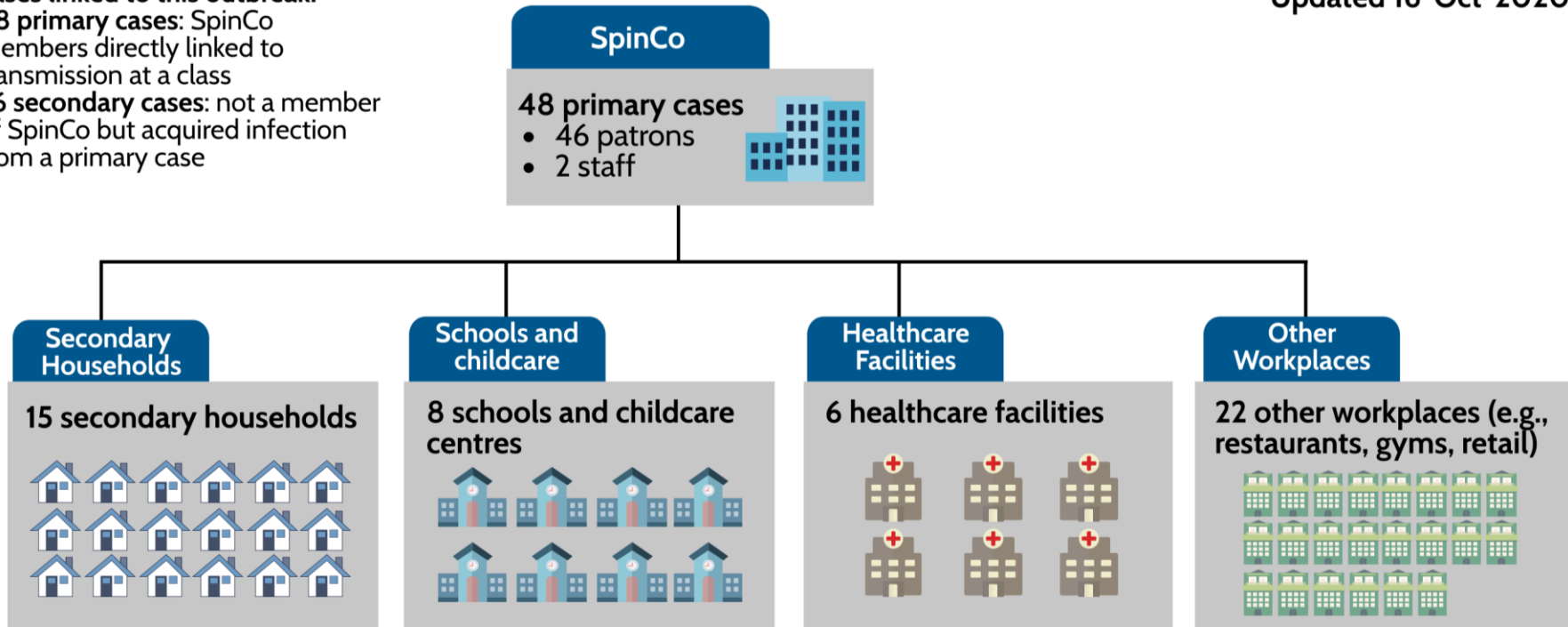
| Facility | Facility type | Declared dates | Total cases | Staff cases | Resident cases | Deaths |
|--|---------------------|-----------------|-------------|-------------|----------------|--------|
| St. Peter's at Chedoke | Long-term care home | 27 Sept – 6 Oct | 1 | 1 | 0 | 0 |
| Rygiel Supports for Community Living | Other | 27 Sept – 9 Oct | 1 | 1 | 0 | 0 |
| KOI Restaurant | Workplace | 1 Oct – 5 Oct | 2 | 2 | 0 | 0 |
| SPINCO | Other | 5 Oct -- | 48 | 2 | 46 | 0 |
| Salvation Army Lawson Ministries Assisted Living | Other | 9 Oct -- | 1 | 1 | 0 | 0 |
| Dundurn Place Care Centre – 4 th fl | Long-term care home | 11 Oct -- | 2 | 1 | 1 | 0 |
| Sacred Heart of Jesus Elementary | School | 13 Oct -- | 2 | 2 | 0 | 0 |
| Kushies Baby | Workplace | 13 Oct -- | 3 | 3 | 0 | 0 |
| Shannen Koostachin Elementary | School | 13 Oct -- | 2 | 2 | 0 | 0 |
| Radius Restaurant | Workplace | 14 Oct -- | 3 | 3 | 0 | 0 |

SpinCo Outbreak

Updated 16-Oct-2020

74 cases linked to this outbreak:

- **48 primary cases:** SpinCo members directly linked to transmission at a class
- **26 secondary cases:** not a member of SpinCo but acquired infection from a primary case



Key messages

- Primary cases originating from SpinCo were connected to various other settings resulting in 26 secondary cases in some of these settings.
- This information is preliminary and subject to change pending further investigation.

Additional Control Measures

- Letter to Long-Term Care Homes, Retirement Homes, and Residential Care Facilities
 - Restrict visitors, absences as much as possible
- Interim guidance for gyms

Potential Scenarios for the Second Wave



Slow Burn

Smaller second wave; a few localized outbreaks that are quickly contained.



Peaks and Valleys

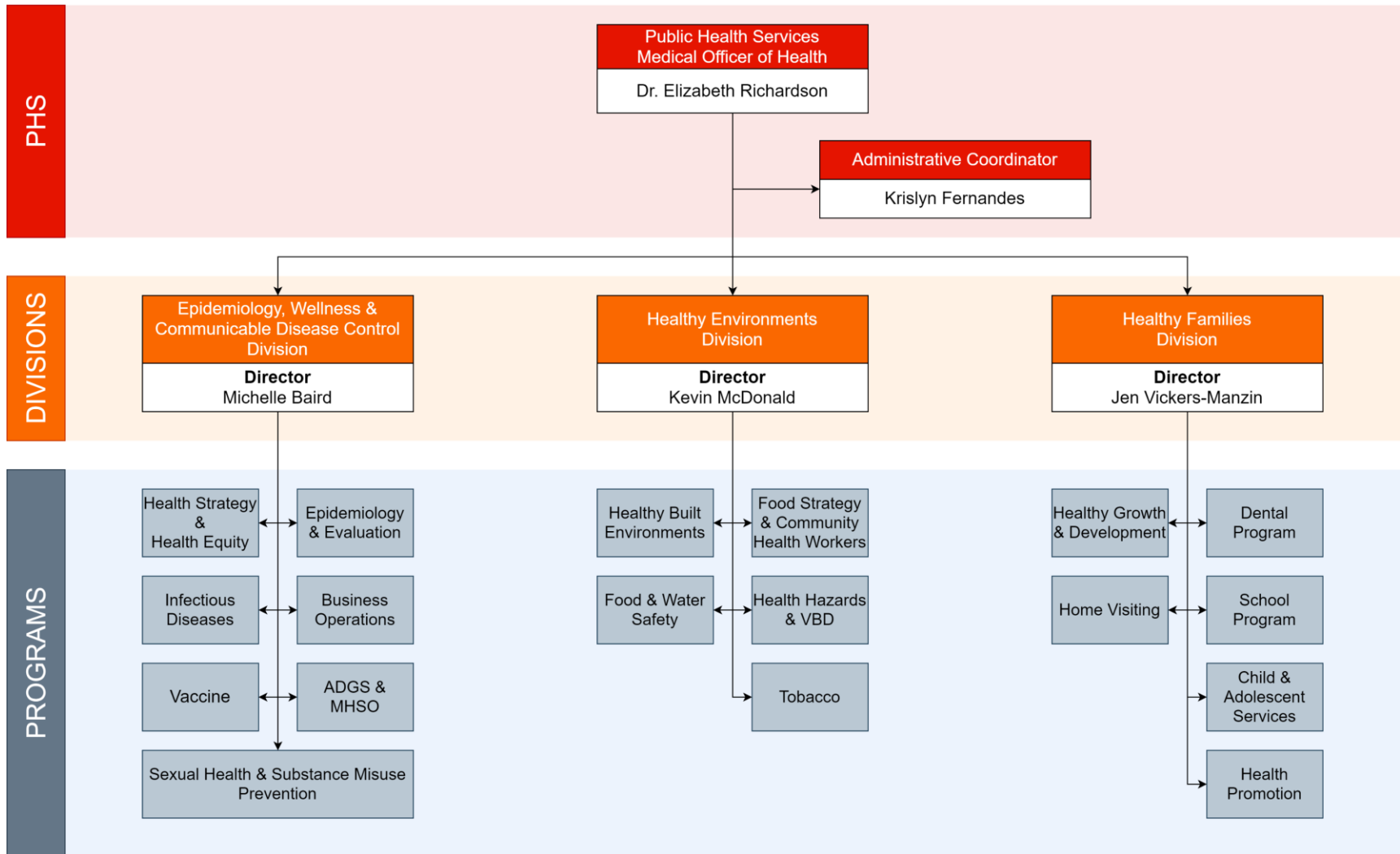
Moderate second wave; some areas with little impact while others with localized outbreaks; infections in congregate settings.



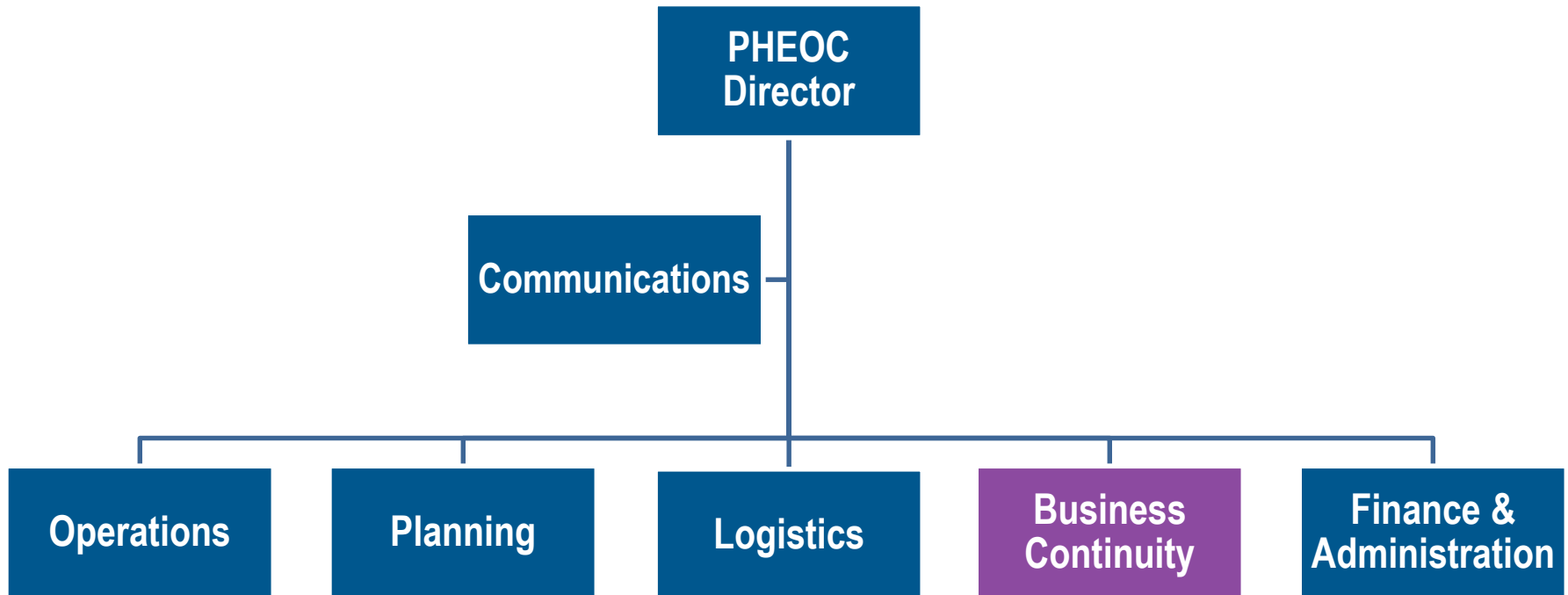
Fall Peak

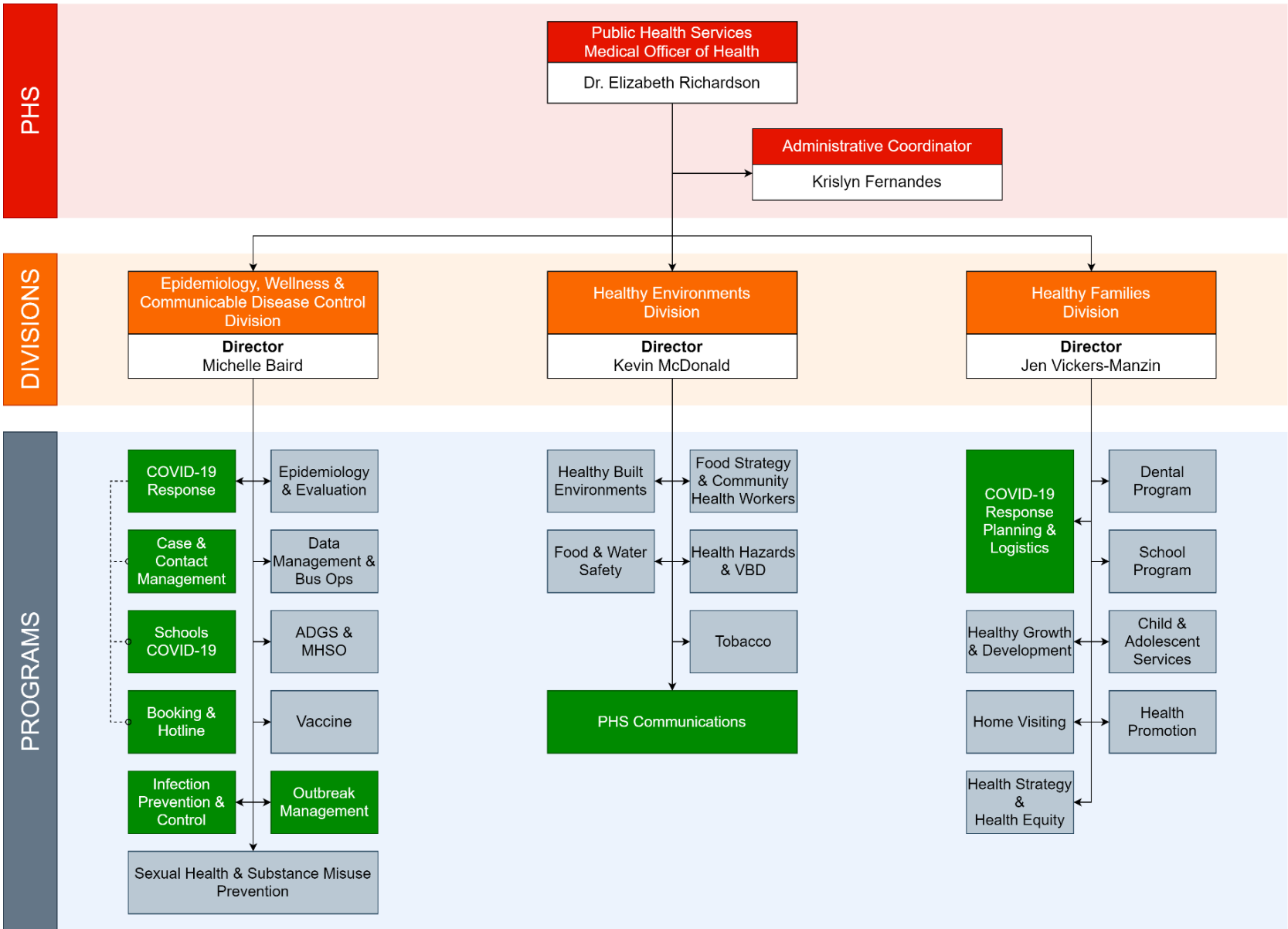
Large second wave that targets health care systems in areas with high population density; regional and local outbreaks that are hard to contain; severe outbreaks in congregate settings.

Public Health Services Structure Pre-COVID19

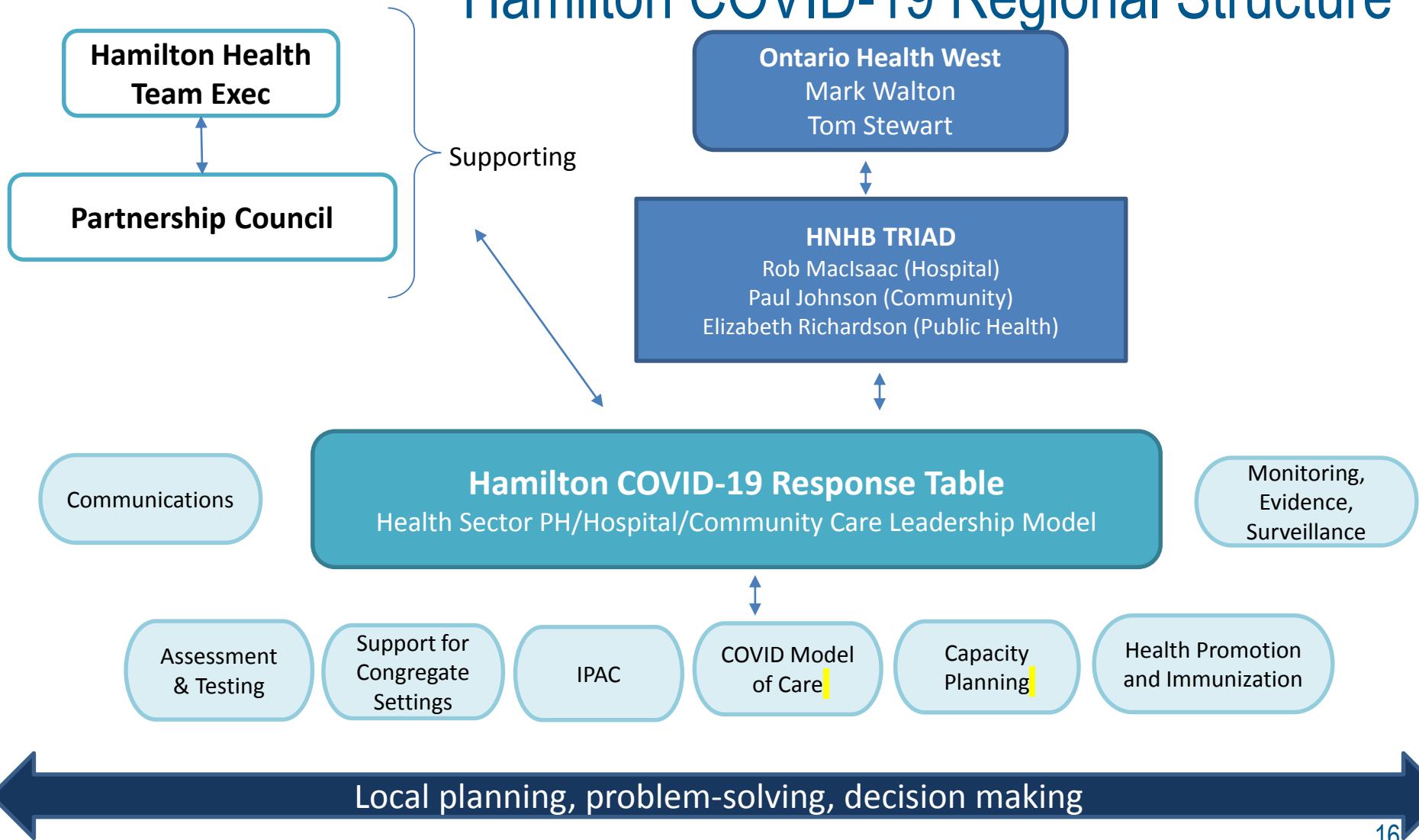


Public Health Services IMS Structure





Hamilton COVID-19 Regional Structure



Current State

- 232 PHS staff and 4 City staff are currently working in PHS on COVID-19
- Of the 96 (75 + 21) FTE approved to hire
 - 64 FTE have been hired to date
 - Includes 21.0 FTE *new* School COVID-19 PHNs
 - Recruitment of remainder ongoing
 - Onboarding and training significant time commitment
- Demands on staff are significant, also extensive OT

Assessment Centre Booking Staff (17 FTE)

- Implementation of online booking and changes to testing criteria significantly improved demands
- Negotiating with St. Joseph's Healthcare Hamilton re: how best to move forward with booking line

Status of Public Health Services Programs & Services

Program Prioritization

Risk Assessment Framework Criteria

- Impact of prolonged discontinued service on health & safety of citizens and clients
- Staff safety
- Capacity
- Personal Protective Equipment requirements

| High | Medium | Low |
|--|--|--|
| Immediate action is required to reduce risk. | Risk is currently moderate, but resume activity as soon as control measures allow. | Restart once changes to public health measures allow programs to resume. |

Status of Public Health Services Programs & Services

Essential and Critical Services – *open with some modifications*

- Alcohol, drugs and gambling services
- Breastfeeding support
- Child and adolescent services
- Case and contact management for communicable diseases
- Emergency dental services
- Epidemiology & evaluation
- Health strategy & health equity
- Virtual home visits for babies, children, and families
- Mental health and street outreach services
- Naloxone distribution
- Rabies investigations
- Tobacco enforcement – *complaint-based only*
- Urgent health hazard complaint investigations
- Vaccine management and delivery



Status of PHS Programs & Services

High-risk services reopened:

- Dental Clinics & Bus – additional emergency treatment capacity
- High-risk food premises inspections
- Residential Care Facility inspections
- Harm Reduction – street health clinics and nursing shift on the VAN
- Vaccine cold chain inspections & some community catch up clinics
- Vector borne disease program

High-risk services next to reopen:

- Further vaccine catch up clinics for community and grade 7/8 students



Status of PHS Programs & Services

Some medium-risk services have reopened

- Moderate-risk food premises inspections
- Recreational water facility inspections
- Small drinking water inspections
- Climate change
- School program (*non COVID-19 in progress*)



Status of PHS Programs & Services

Next to reopen if possible

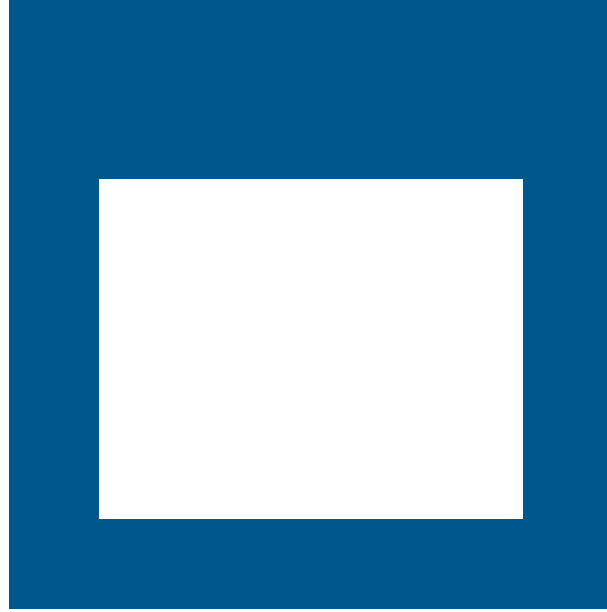
- Additional street health clinics (harm reduction)
 - *These sites are also used to provide flu vaccinations*
- Air quality
- Fixed premise & Child care inspections (routine)
- Health equity components of Hamilton's Food Strategy
- Tobacco enforcement (non complaint based)
- Tobacco cessation clinics



Status of PHS Programs & Services

All low-risk services will remain on-hold, including

- Prenatal & parenting groups, face to face home visiting
- Dental Clinics – additional treatment capacity
- Food Safety – non urgent complaints, disclosure postings, comments on building/planning applications, inspections of low risk food premises, farmers markets, food trucks
- Residential Care Facility routine inspections
- Harm Reduction – street health clinics
- Health Hazards – non urgent complaints and reviews
- Tobacco hotline
- Vaccination reviews under *Immunization of School Pupils Act*
- Health status assessments



QUESTIONS?