

### Background Analytics

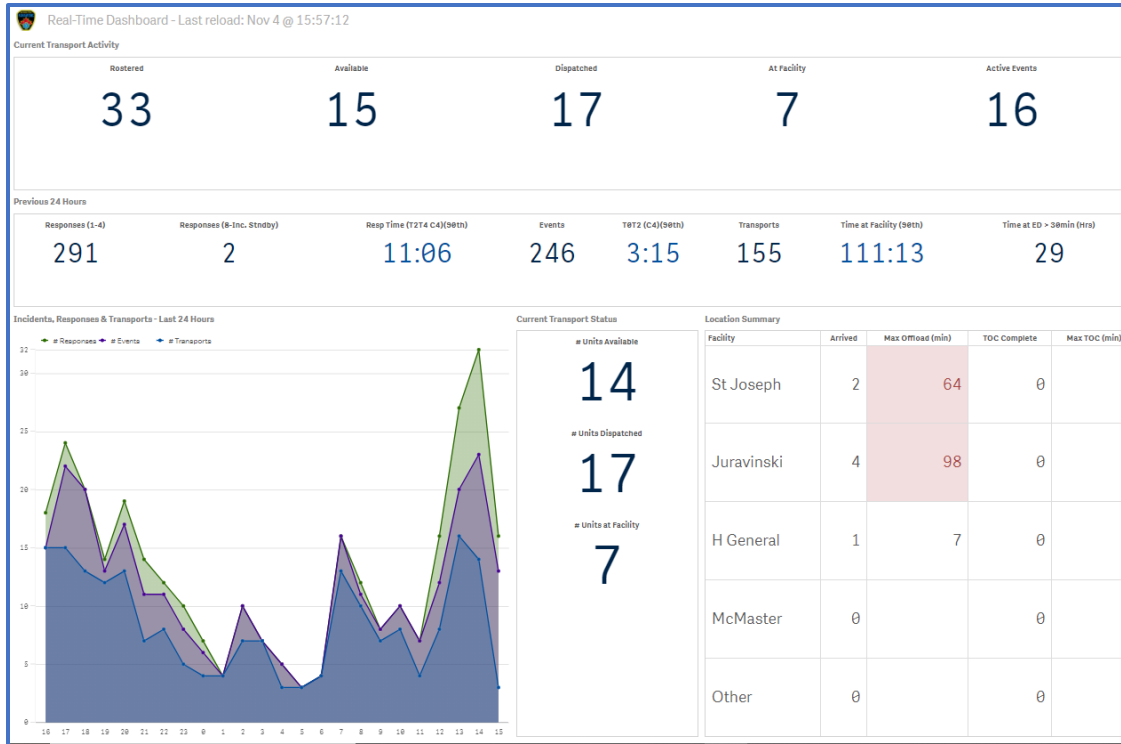


Figure 1 – Sample Ginqo Qlikview Analytics Dashboard

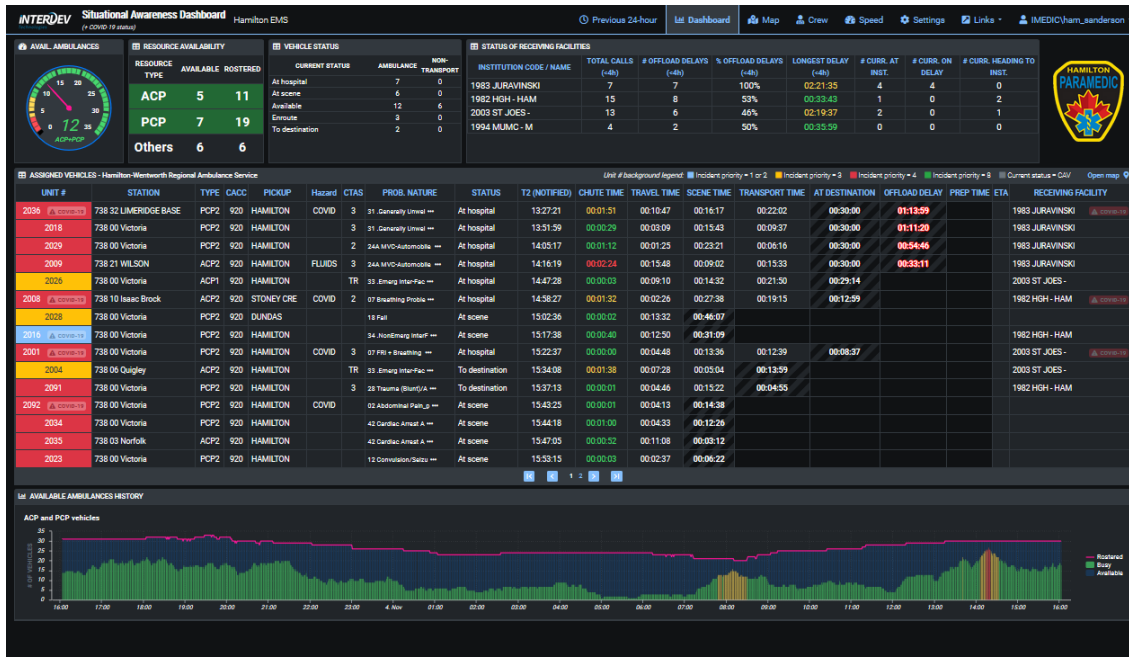
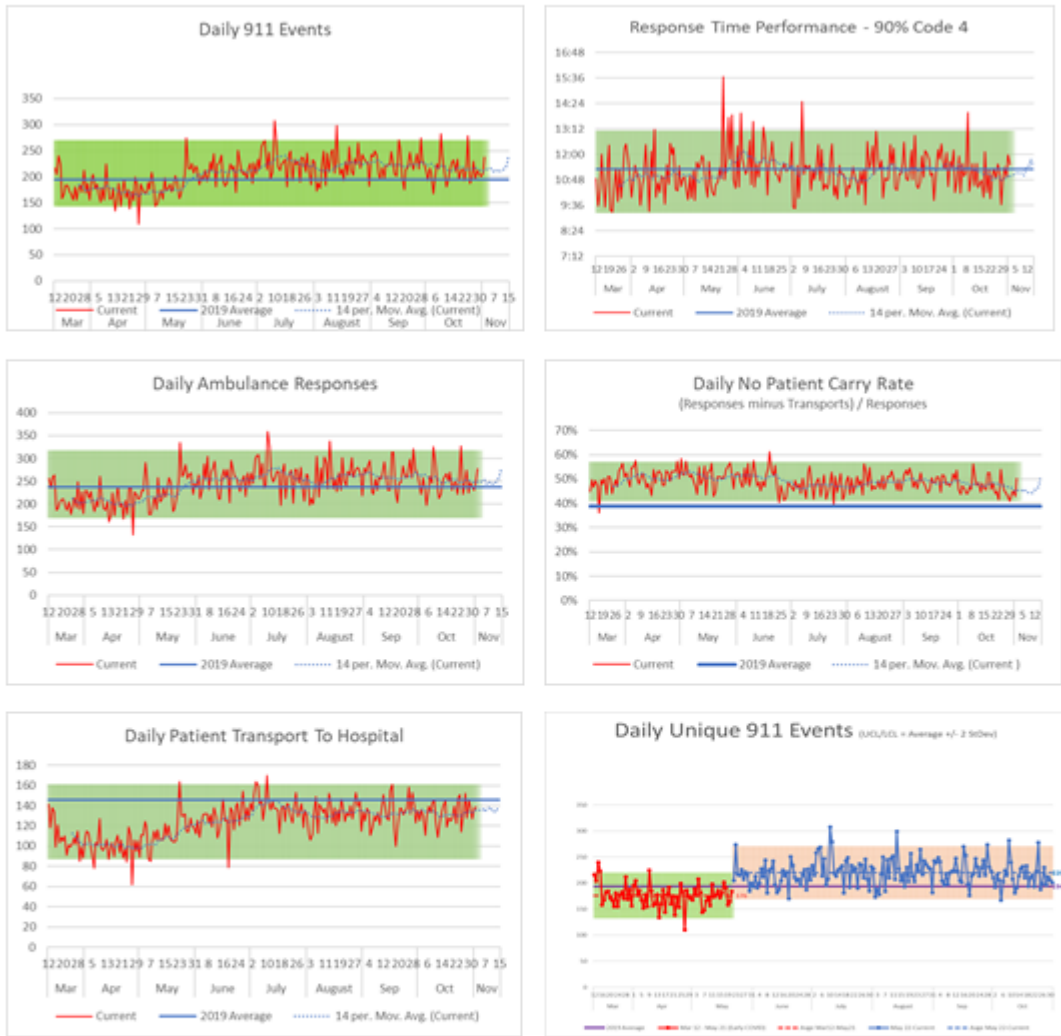


Figure 2 – Sample Interdev Situational Awareness Dashboard (SAD)

Updated to Monday Nov 2 – to be updated weekly unless significant changes – Blue line is 2019 Average. Light green shaded area represents +/- 2 Standard Deviations from the current period average. Red points above or below the +/- 2 StDev are statistical outliers. Update to charts normally occurs Mondays



Events and responses continue the trend above the 2019 average. In comparison to the 2019 average

	Mar 12-May 22 (early COVID)	Post May 22 (Economy Opening)
911 Events	9% Below Average	13% Above Average
911 Responses	11% Below Average	8% Above Average
Transports to Hospital	20% Below Average	10% Below Average

Despite transports to hospital continuing to be lower than last years average (but increasing toward the same level) the hospital offload delays continue to be a challenge. They have returned to being part of daily routine for issues management at pre-COVID levels.

Figure 3 - Sample Daily Demand and Performance Tracking