

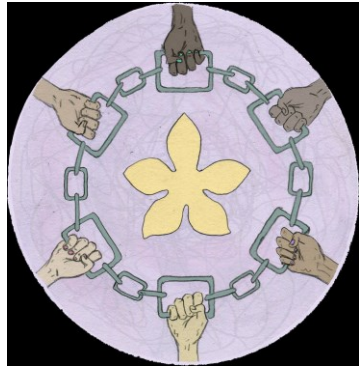
#JUSTRECOVERYHAMILTON

PASCALÉ MARCHAND

SOCIAL DETERMINANTS OF HEALTH

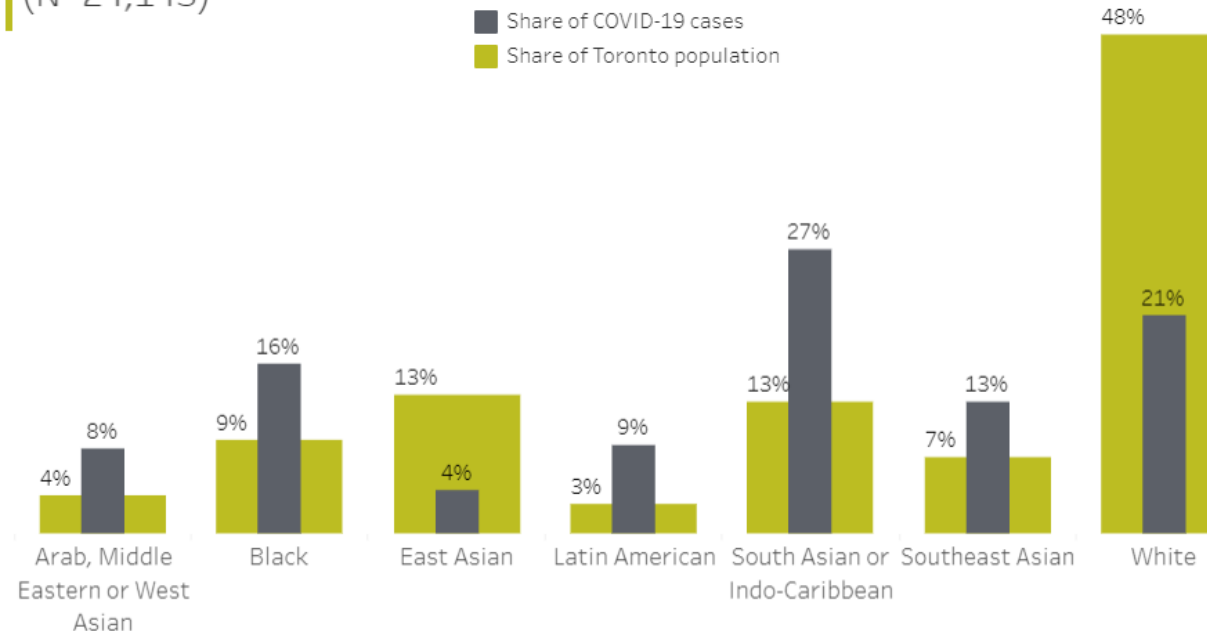
- Disability
- Early child development
- Education
- Employment and working conditions
- Food insecurity
- Gender
- Geography
- Globalization
- Health services
- Housing
- Immigration
- Income and income distribution
- Indigenous ancestry
- Race
- Social exclusion
- Social safety net
- Unemployment and job security

RACE AS FACTOR



Share of COVID-19 cases among ethno-racial groups compared to the share of people living in Toronto, with valid data up to November 30, 2020

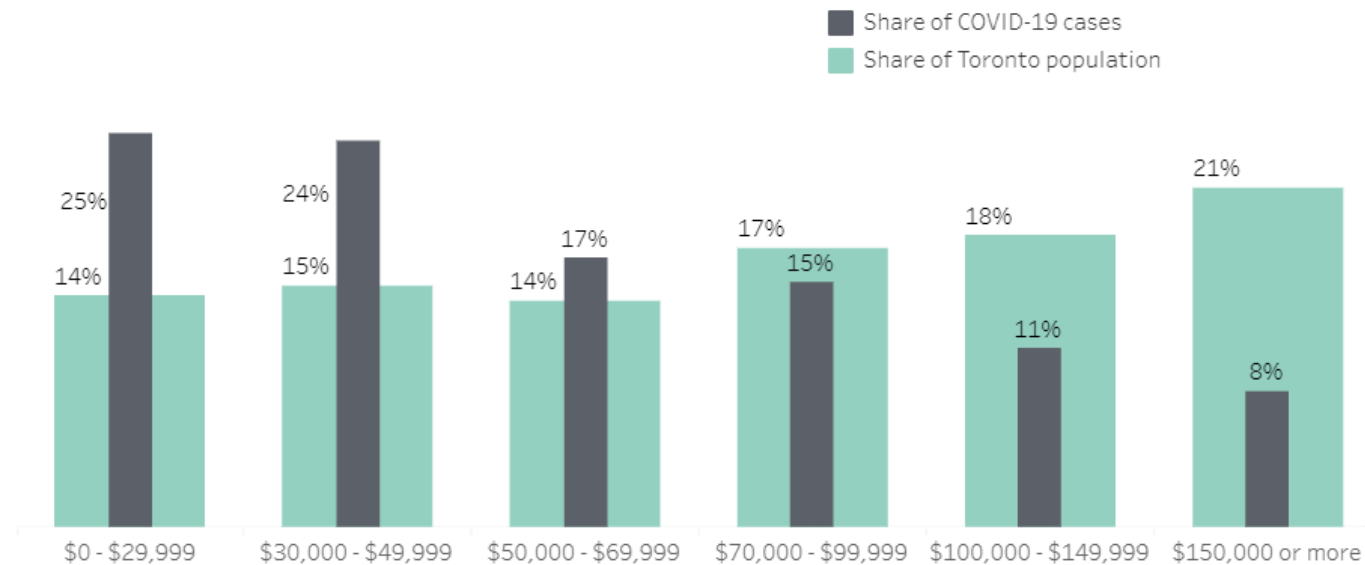
(N=24,143)



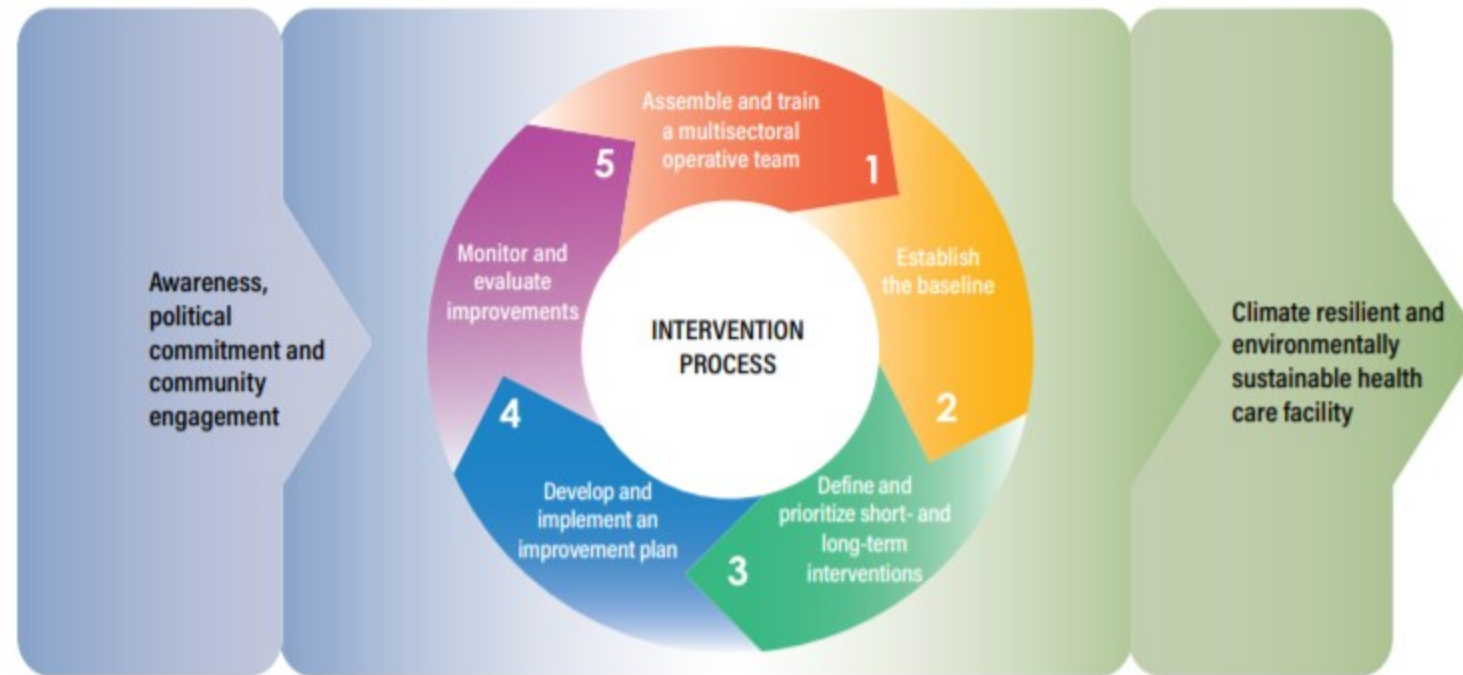
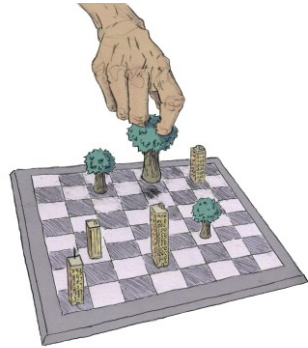
INCOME AS FACTOR



Share of COVID-19 cases by household income compared to the share of people living in Toronto by income group, with valid data up to November 30, 2020 (N=13,247)



CLIMATE RESILIENCE & HEALTH CARE



WHAT CAN WE DO?

- Invest in women
- Disability justice
- Mobility justice
- Inclusive city building
- Decent jobs, wages, and our local economy
- Green infrastructure, policy, and public access
- Tackle systemic racism
- Housing as human right
- Support 2SLGBTQIA+ communities



HAMILTON POLICE SERVICE

Toronto pilot project could remove police from mental health calls – but not in emergencies



Project would target 'non-emergency, non-violent' calls in areas with highest numbers of reported crises

CBC News · Posted: Jan 21, 2021 2:39 PM ET | Last Updated: January 21

- 2020 Operating budget:
 - \$168,274,259
 - 3.87% increase from 2019
- Contribution from average residential property tax:
 - \$648
- 2021 operating budget:
 - \$174,248,233
 - 3.48% increase from 2020

Forbes

BREAKING | Jan 28, 2021, 09:45am EST | 6,235 views

Austin To Use Money Cut From Police Budget To Buy Hotel For Homeless Population



Jemima McEvoy Forbes Staff

Business

I'm a British-born reporter covering breaking news for Forbes.



THANK
YOU