

Public Health Service
2020 Year-End Review &
2021 Annual Services Plan and Budget

March 22, 2021

Overview

1. 2020 Public Health Services Highlights
 - a) COVID-19 Response
 - b) Public Health Services Programs

2. 2021 Annual Service Plan & Budget
 - a) 2021 Program Plans
 - b) Public Health Services Budget Overview

2020 Year-End Review



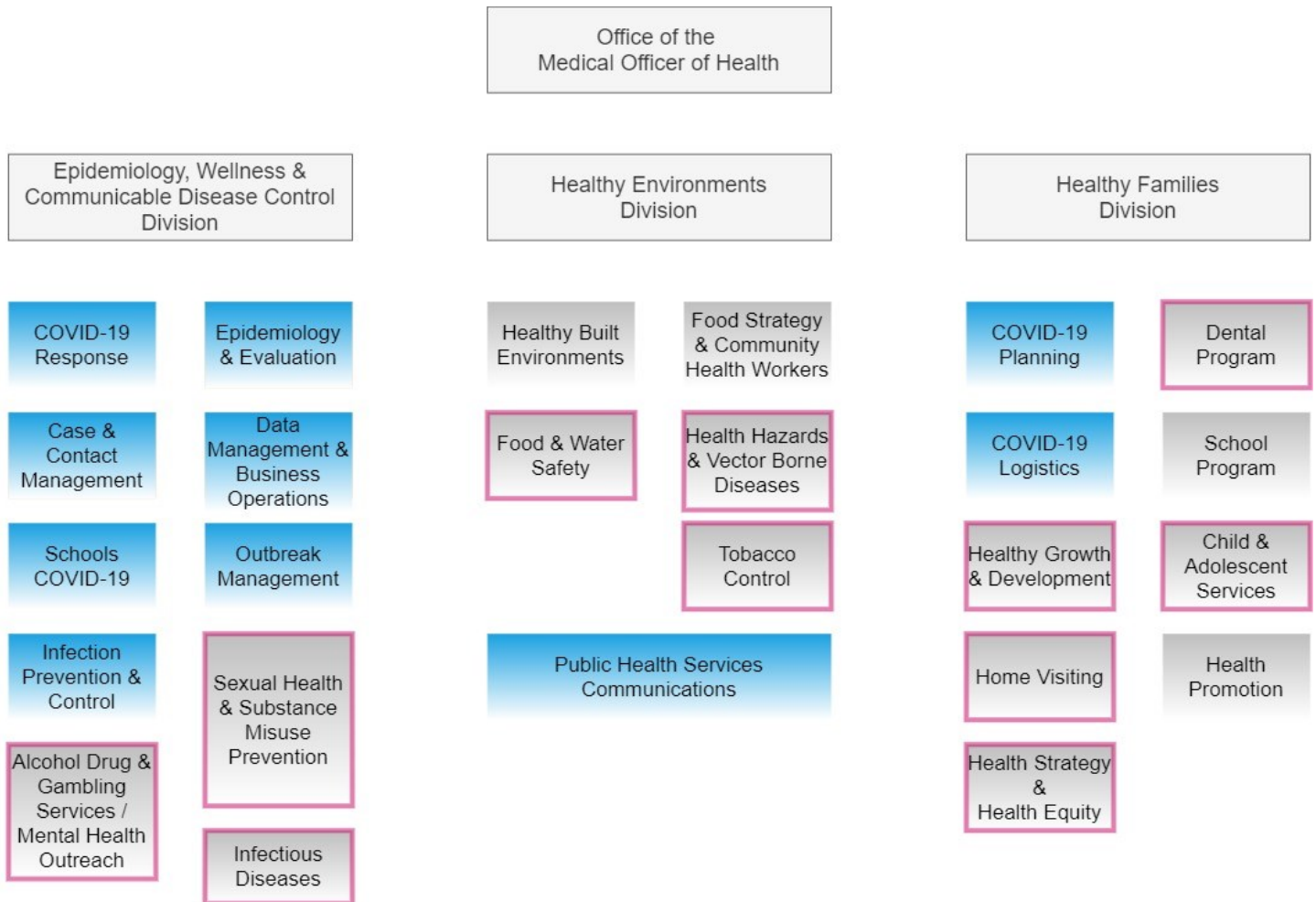
Public Health Services & Programs 2020

LEGEND

COVID-19 Response

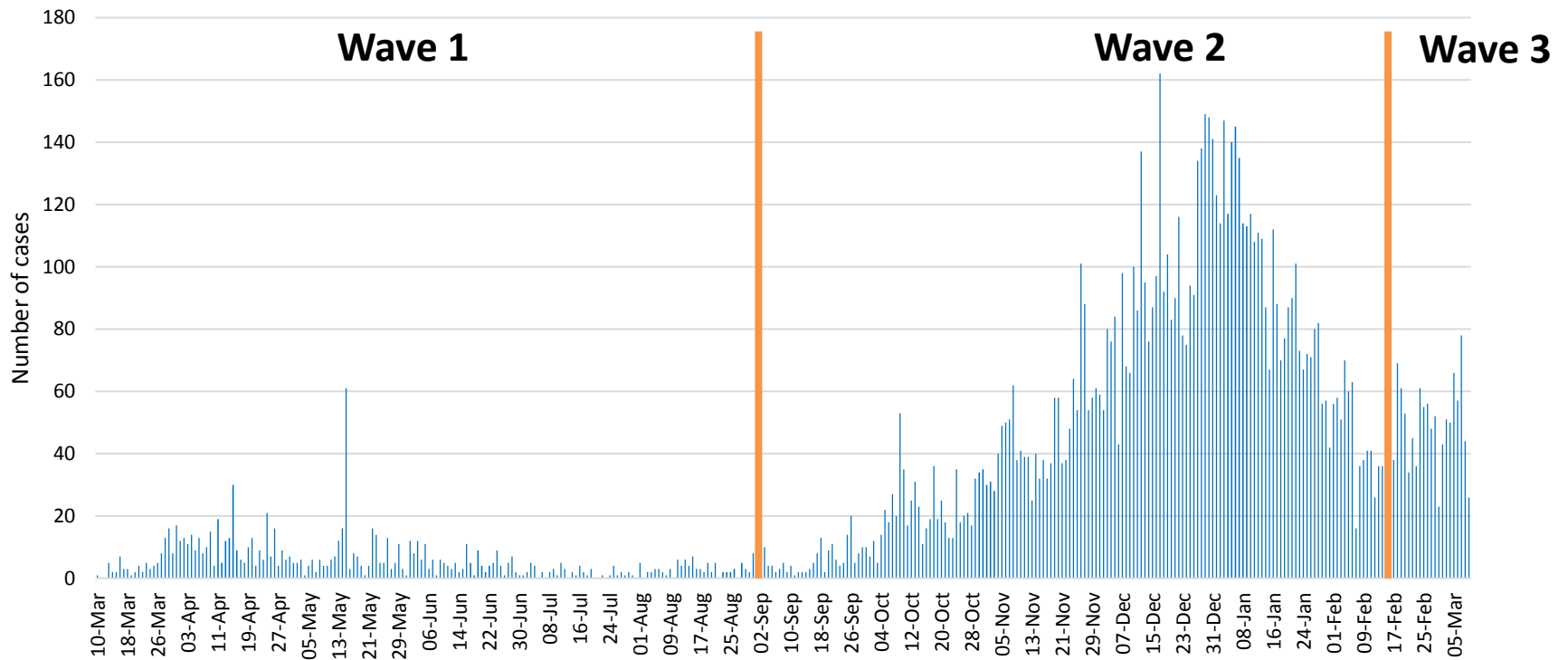
Includes essential service
fully or partially operational

On Hold



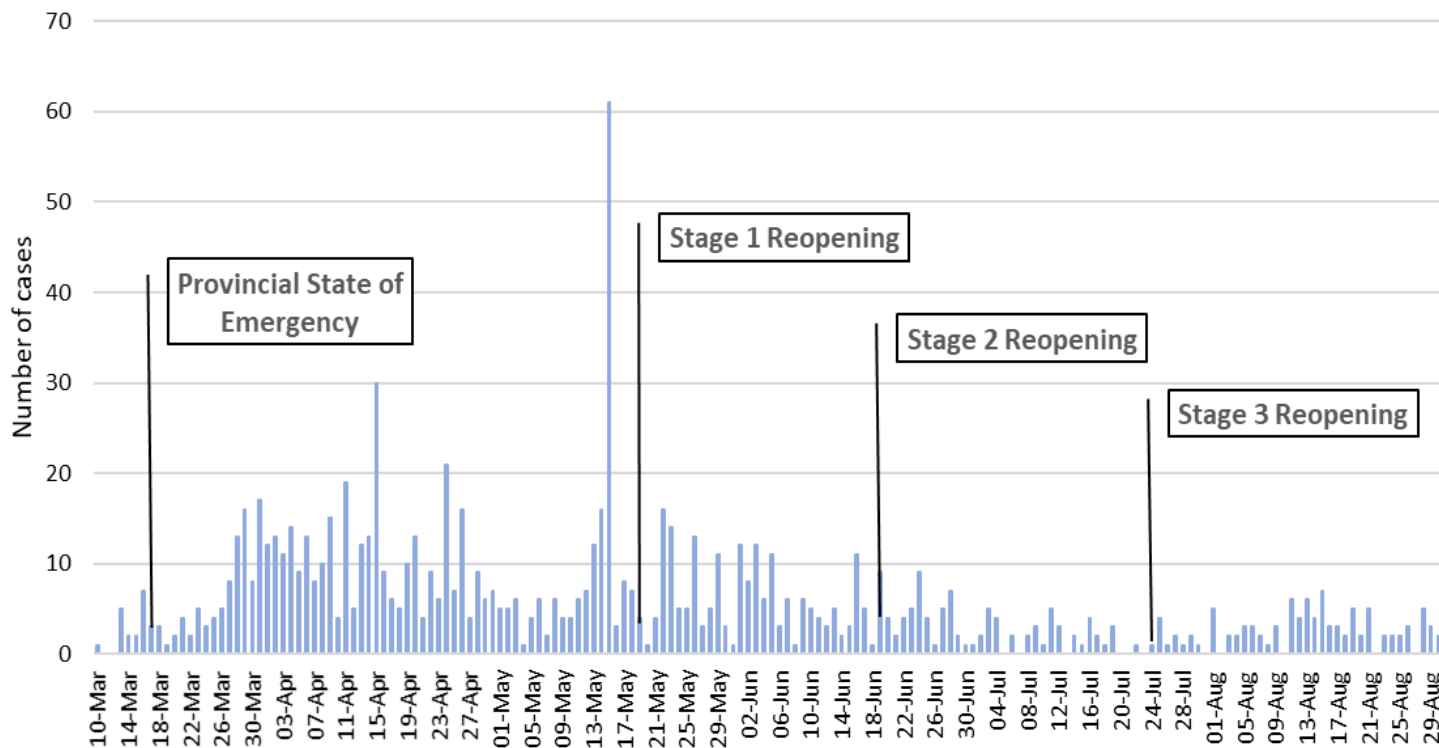
Waves of COVID-19 in Hamilton

Number of COVID-19 cases reported to public health per day,
City of Hamilton Mar 10 2020 - Mar 9 2021



COVID-19 in Hamilton: Wave 1

Number of COVID-19 cases reported to public health per day, City of Hamilton Mar 10 2020 - Aug 31 2020 (Wave 1)



985
cases

31
outbreaks

148
hospitalizations

45
deaths

54,134
tests
completed

COVID-19 in Hamilton: Wave 1



Case Management and Contact Tracing

Followed up with COVID-19 cases & contacts

Supported access to COVID-19 test results

Worked with employers and employees to investigate COVID-19 transmission

Collaborated to support individuals receiving homecare and arrange in home testing with Paramedic Services

Collaborated with Shelter Health to support testing and infection prevention & control to mitigate spread of COVID-19 within vulnerable populations



Tim O'Shea
@timosh99

Week 5 of our surveillance testing program in Hamilton shelters is underway. We couldn't do this without this team of amazing Hamilton Public Health nurses who completed ~200 tests this week [#NursesWeek](#) [#COVID19](#) [#HamOnt](#)



COVID-19 in Hamilton: Wave 1



Infection Prevention & Control

Supported congregate settings with provincial directives, preparing for potential cases, isolation and outbreaks

Inspected congregate settings and agricultural sector for safe operations

Supported business sectors with interpretation and compliance with the Reopening Ontario Act



**HELP PREVENT COVID-19 SPREAD
IN WORKPLACES**

- Develop sick time policies & procedures to help support employees to stay home when they are sick.** (Illustration: person in bed with dog)
- Ensure employees complete a health screening questionnaire before each shift.** (Illustration: person at computer with clipboard)
- If an employee doesn't pass the screening protocol, they should self-isolate at home, contact their health care provider &/or get tested.** (Illustration: person on phone)
- If an employee develops symptoms at work, they should go home right away.** (Illustration: person at desk)
- Sick employees who test negative can return after 24 hours symptom-free. Employees who test positive must follow Hamilton Public Health Services advice for return to work.** (Illustration: COVID-19 test results card)

hamilton.ca/coronavirus 

COVID-19 in Hamilton: Wave 1



Outbreak Management

Management of outbreaks

Provided outbreak training, education sessions and support to long-term care homes in partnership with hospitals

Support swabbing/testing daycare workers, shelters, some long-term care and retirement homes

Worked through congregate settings tables to support staffing and resource

Enforcement where needed

HAMILTON PUBLIC HEALTH IS FIGHTING COVID-19



CASE INVESTIGATION
Determining where people got and may have spread COVID-19



CONTACT TRACING
Isolating and monitoring close contacts of positive cases



DATA ANALYSIS
Interpreting data to inform our local measures



PROTECTING VULNERABLE POPULATIONS
Helping to control outbreaks in long-term care homes



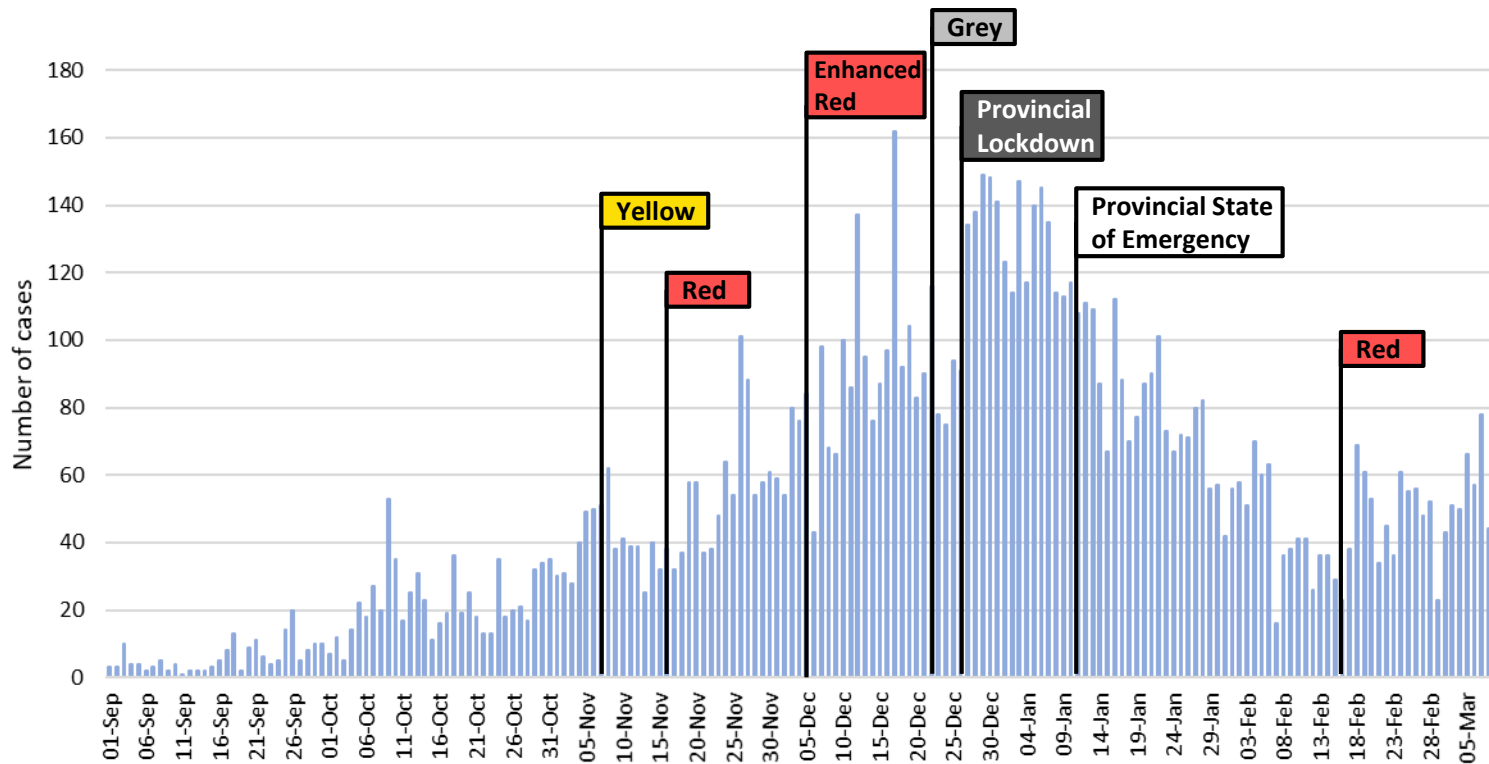
ANSWERING YOUR QUESTIONS
Responding to questions from the community on our COVID-19 Hotline (905-974-9848)

hamilton.ca/coronavirus



COVID-19 in Hamilton: Wave 2

Number of COVID-19 cases reported to public health per day, City of Hamilton Sept 1 2020 - Feb 16 2021 (Wave 2)



8,937 cases

217 outbreaks

610 hospitalizations

231 deaths

163,387 tests completed

COVID-19 in Hamilton: Wave 2



Case Management and Contact Tracing

Same initiatives as Wave 1

Recruited 75 Full-Time Employees in preparation for the second wave

Transitioned to a new provincial case and contact documentation system

WHO IS A CLOSE CONTACT?

CLOSE CONTACT

- You were within 6 feet, or 2 metres distance for more than 15 minutes.
- You had close physical contact with the person, such as a handshake.
- Some one beside you at your workplace.
- A person who accidentally sneezed, or coughed on you while talking in close proximity.

NOT CLOSE CONTACT

- Someone at your workplace that you do not work with.
- You maintained 6 feet or 2 metres distance.
- Briefly had a chat in the hallway, but kept your distance.
- You passed a person quickly in the hallway.

hamilton.ca/coronavirus

COVID-19 in Hamilton: Wave 2



COVID-19 Schools

Hired 23 Full-Time Employees School COVID-19 Public Health Nurses

Collaborated with school boards and schools to reopen safely

WHAT PARENTS NEED TO KNOW
IF SOMEONE AT SCHOOL TESTS POSITIVE FOR COVID-19

- Parents will be notified but the person's identity will not be shared.**
- Not all students are at risk if there is a positive case at school.**
- Public Health will follow up with close contacts, likely including the class cohort.**
- Close contacts will self-isolate for 14 days, monitor for symptoms & get tested.**
- Other people at school will monitor for symptoms but don't have to self-isolate.**
- Public Health will continue to monitor & notify parents/staff of risk as needed.**

hamilton.ca/coronavirus



Infection Prevention & Control

Continued to support congregate settings

Continued working with business sectors to support interpretation and compliance with Reopening Ontario Act

**Shop Locally
Shop Safely**
Support Hamilton's small businesses and restaurants

hamilton.ca/coronavirus

COVID-19 in Hamilton: Wave 2



Outbreak Management

Same initiatives as Wave 1

Provided outbreak training, education sessions and support to:

- schools and school boards
- daycares



2020 Program Highlights

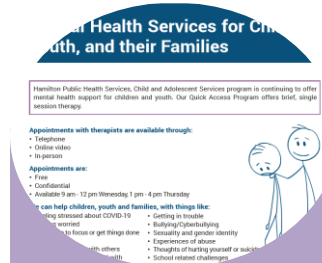
Rapid transition to virtual care



Virtual breastfeeding support was widely used to adapt to COVID-19 restrictions - **204 virtual visits** completed



1,324 online prenatal education registrants – **more than 3x** the in-person registrants in 2019



144 virtual walk-in referrals for mental health services for children, youth & their families – **almost 2x higher than 2019**



Infectious Disease program implemented video directly observed therapy for tuberculosis cases – **71%** of cases received care this way

2020 Program Highlights

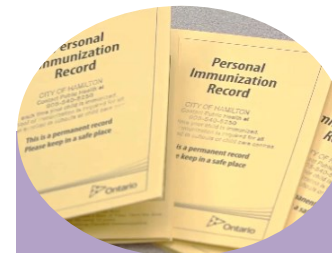
Continued and adapted outreach



1,097 clients seen at the dental bus and **2,357** clients seen at the Dental Clinic despite COVID-19



Harm Reduction Van and needle exchange **increased** service throughout COVID-19



Grade 7/8 Immunization Catch Up Clinics provided for students when schools reopened



Public Health Staff led the Pilot Hamilton Sustainable Neighbourhood Action Plan - **50 trees given away**

2020 Program Highlights

Community engagement and collaboration



Collaboration with Indigenous communities to address needs & barriers related to COVID-19



COVID-19 surveillance and intelligence for decision-making with health care and community partners



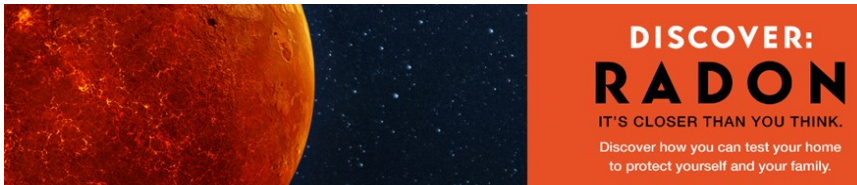
Increased City of Hamilton's capacity to respond and enforce physical distancing and face-covering By-laws



New community partnership for **low-barrier** access to mental health supports for children and youth

2020 Program Highlights

Successes



Radon Prevalence Study led to policy for enforcement of Ontario Building Code to create homes **safe from effects of radon**

Engaged with **community** on climate mitigation and adaptation



In addition to COVID-19:

- Investigated all **(3,599)** confirmed cases of reportable infectious diseases
- Investigated all **(69)** confirmed outbreaks



Maintained **prenatal screening & home visits** for high risk clients throughout the pandemic

Program Planning 2021



•Continue with COVID-19 response and other essential Public Health Services



•Incorporate equitable response and recovery plan



•Focus on recovery post-COVID-19

Public Health Priorities 2021



Balancing Business Continuity & COVID-19 Response

1. COVID-19 Response and Business Continuity essential services adequately resourced



Health Equity

1. All Hamilton residents attain full health potential without disadvantage due to the social determinants of health.



Mental Health & Addictions

1. All Hamilton residents live, learn, and grow in a supportive and connected environment to develop resiliency, healthy relationships, and coping.
2. All Hamilton residents are free of harm due to substance use and are able to enjoy the best quality of life.
3. Hamiltonians achieve and maintain a healthy weight throughout their lives.



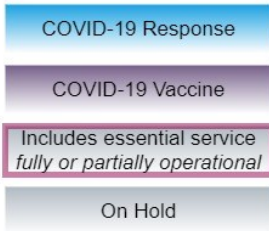
Climate Change

1. Hamilton's population is more prepared for the adverse health impacts and hazards of climate change leading to a healthier, more resilient community.

Goals

Public Health Programs & Services 2021

LEGEND



Epidemiology, Wellness & Communicable Disease Control Division

Office of the Medical Officer of Health

Healthy Environments Division

Healthy Families Division

COVID-19 Response

COVID-19 Vaccine Program

Healthy Built Environments

Food Strategy & Community Health Workers

COVID-19 Planning

Dental Program

Case & Contact Management

Data Management & Business Operations

COVID-19 Clinic Planning

Mobile & Pop Up Clinics

Food & Water Safety

Health Hazards & Vector Borne Diseases

COVID-19 Logistics

School Program

Schools COVID-19

Epidemiology & Evaluation

COVID-19 Vaccine Booking & Hotline

Large Scale Clinic Management

Tobacco Control

Healthy Growth & Development

Child & Adolescent Services

Outbreak Management

Infection Prevention & Control

Clinic Supplies

COVAX Management

Public Health Services Communications

Home Visiting

Health Promotion

Vaccine Inventory Management

Adverse Events Following Immunization

Health Strategy & Health Equity

Alcohol Drug & Gambling Service and Mental Health Outreach

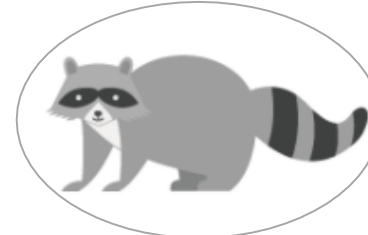
Sexual Health & Substance Misuse Prevention

Infectious Diseases

Status of Public Health Programs & Services 2021

Essential and Critical Services – *open with some modifications*

- Alcohol, drugs and gambling services
- Breastfeeding support
- Child and adolescent services
- Case and contact management for communicable diseases
- Emergency dental services
- Virtual home visits for babies, children, and families
- Sexual health clinics, case management, phone line
- Mental health and street outreach services
- Naloxone distribution
- Epidemiology & evaluation
- Rabies investigations
- Tobacco enforcement – *complaint-based only*
- Urgent health hazard complaint investigations
- Vaccine management and delivery



Status of Public Health Programs & Services 2021

High-risk services - continue with limited capacity

- Dental Clinics & Bus
- High-risk food premises inspections
- Residential care facility inspections
- Harm reduction – street health clinics and nursing shift on the VAN
- Vaccine cold chain inspections & some community catch up clinics
- Vector borne disease program
- Climate change



Status of Public Health Programs & Services 2021

Medium Risk – ongoing & on hold

Ongoing:

- Fixed premise & Child care inspections (routine)
- Moderate-risk food premises inspections
- Recreational water facility inspections
- Small drinking water inspections
- Air quality

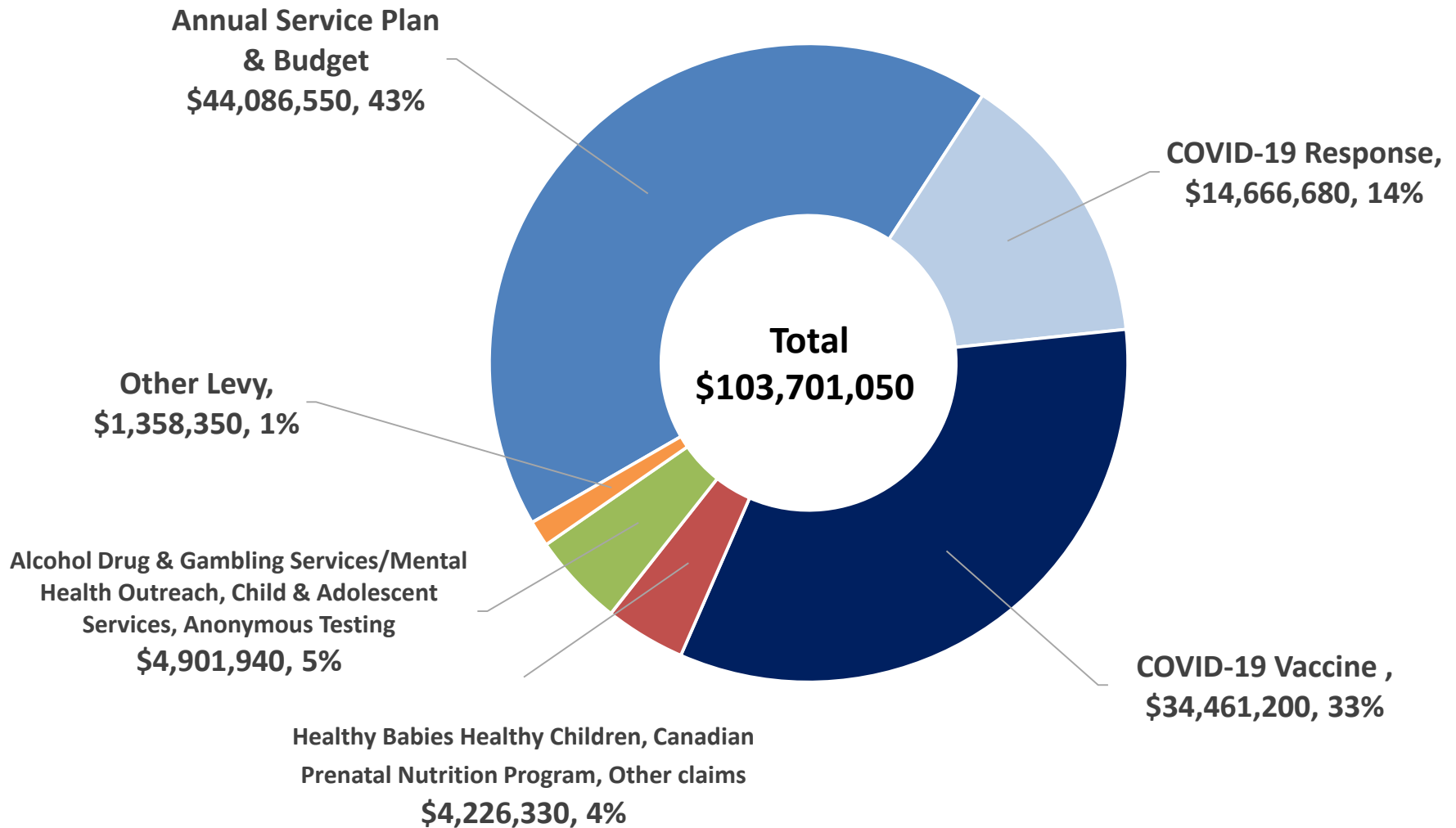
On Hold:

- School program (non COVID-19)
- Tobacco enforcement (non complaint based)
- Tobacco cessation clinics

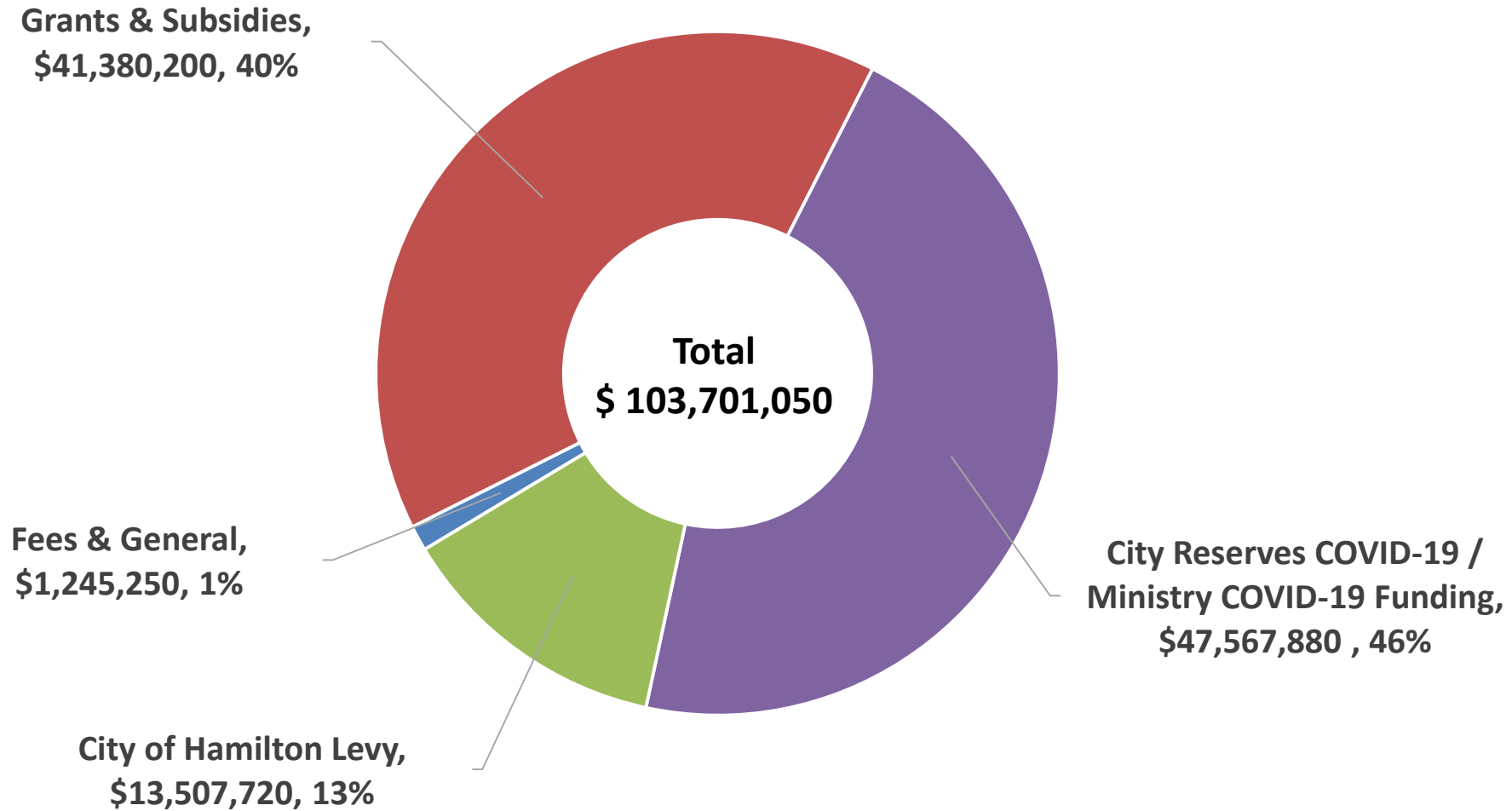
Low Risk – all on hold

- Prenatal & parenting groups, face to face home visiting
- Dental Clinics – additional treatment capacity
- Food Safety – non urgent complaints, disclosure postings, comments on building/planning applications, inspections of low risk food premises
- Residential Care Facility routine inspections
- Harm Reduction – street health clinics
- Health Hazards – non urgent complaints and reviews
- Tobacco hotline

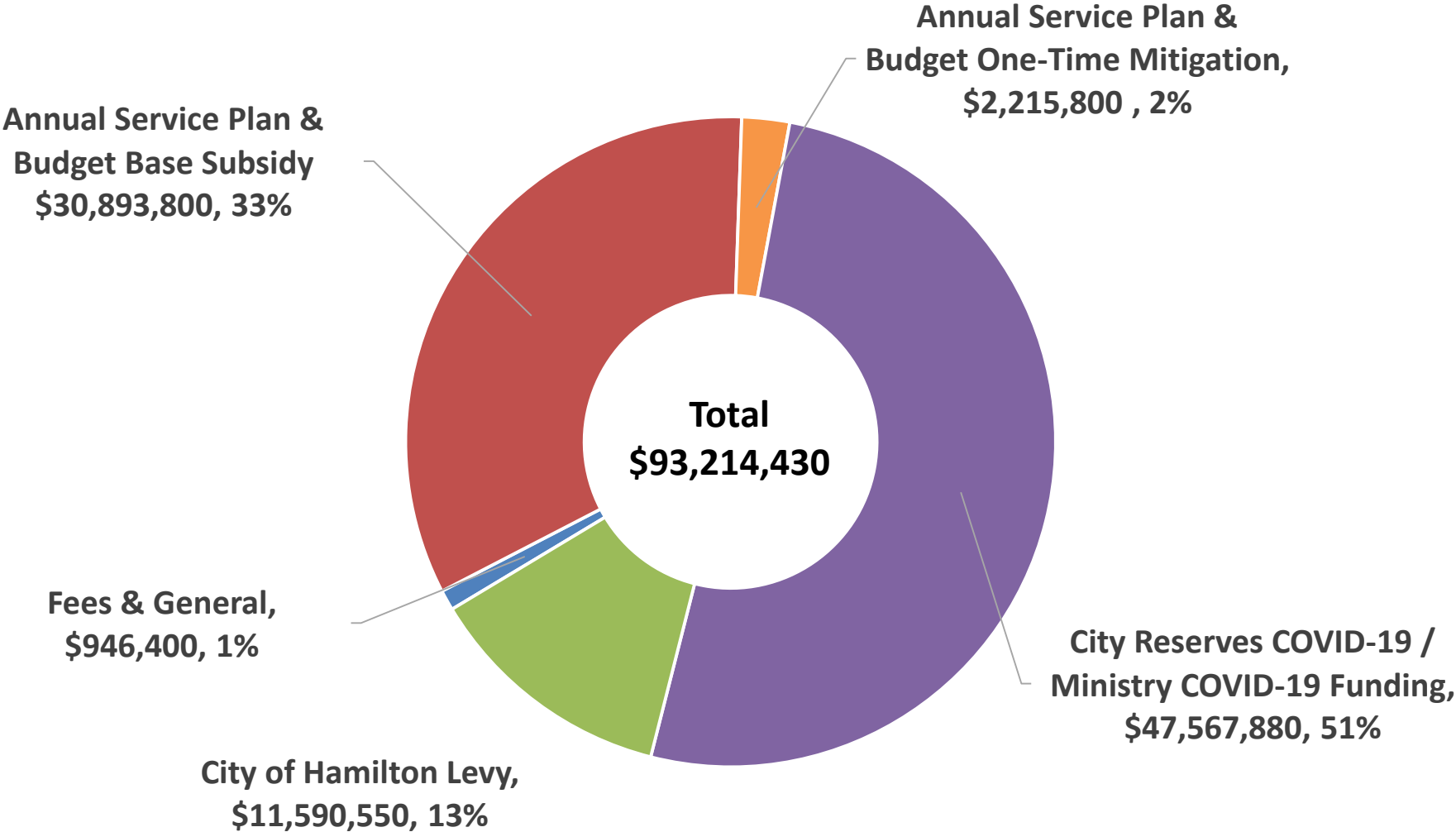
2021 Budgeted Gross Expenditures by Program



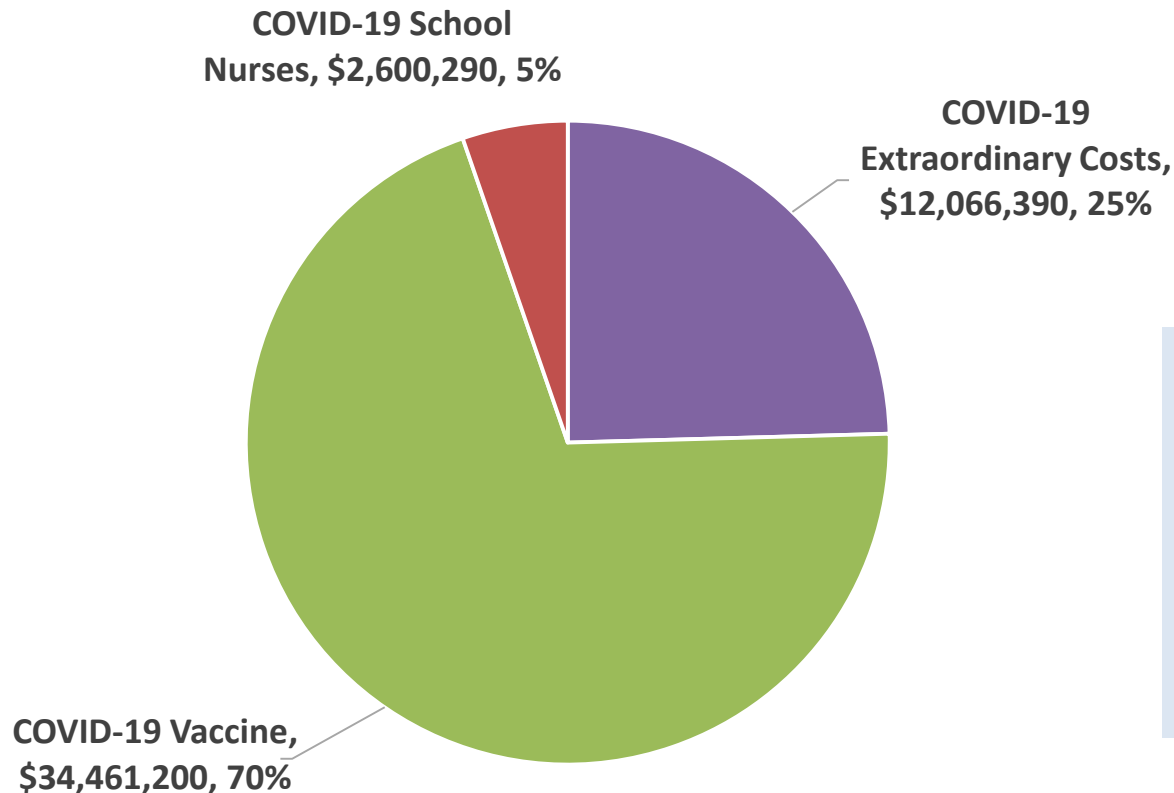
2021 Public Health Services Funding Sources



2021 Annual Service Plan & Budget Funding Details



2021 COVID-19 Expenditures & Funding Sources



**Total COVID Costs:
\$49,127,880**

Funding Sources

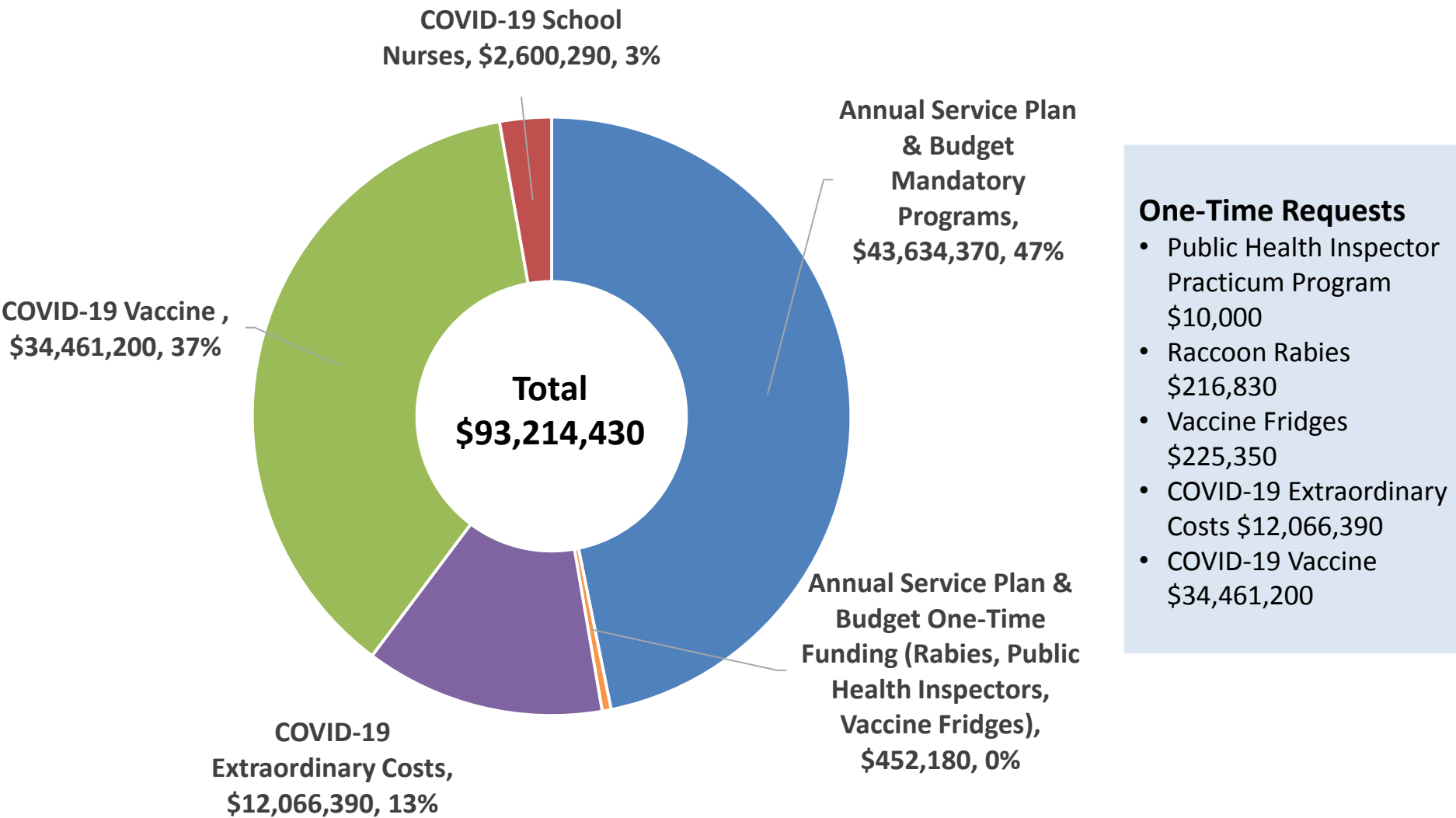
City Reserve COVID / Ministry COVID Funding

- COVID Extraordinary \$13,106,680
- COVID Vaccine Costs \$34,461,200

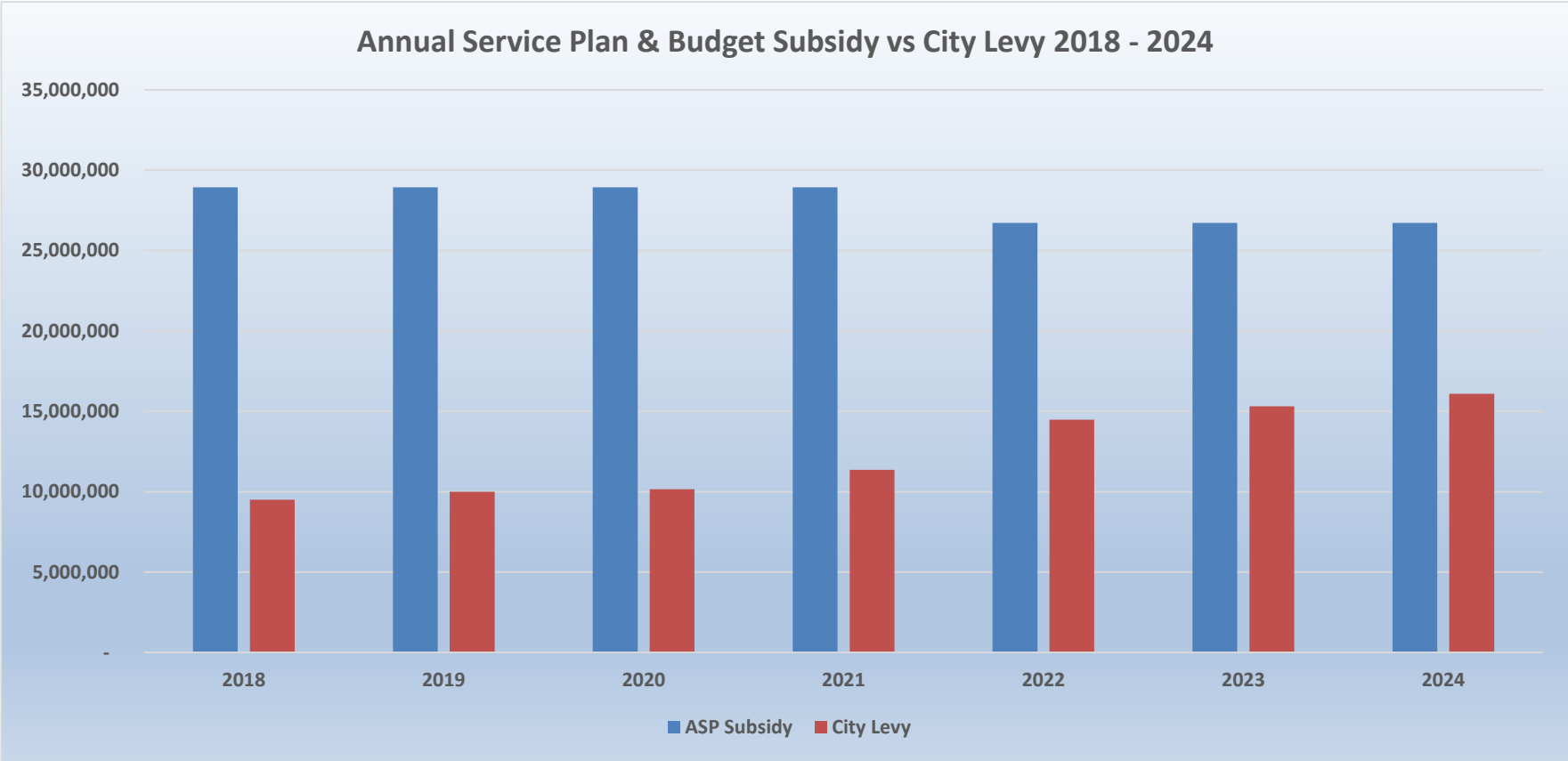
COVID School Nurses Subsidy

- COVID School Nurses \$1,560,000

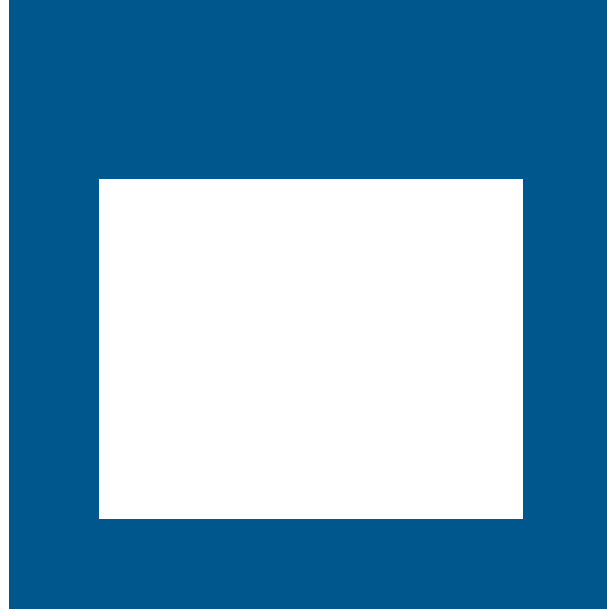
2021 Annual Service Plan & Budget Expenditures Detail



Annual Service Plan & Budget Subsidy vs City Levy 2018-2024



Assumes transition to 70/30 provincial municipal funding in 2022



QUESTIONS?