

**NO. DATE REVISION / COMMENT**

|   |          |                      |
|---|----------|----------------------|
| 1 | 18 11 21 | Issued for Rezoning  |
| 2 | 19 11 04 | Revision             |
| 3 | 19 12 02 | Landmarks Revision   |
| 4 | 19 03 29 | Revision             |
| 5 | 20 06 03 | Revision             |
| 6 | 20 09 29 | Revised for Rezoning |
| 7 | 21 02 22 | Revised for Rezoning |

**NOTES**

**EXHIBITATIONS**

- E1 - WINDOW
- E2 - GLASS
- E3 - GLASS CURTAIN WALL
- E4 - SPANDREL GLASS
- E5 - METAL CLADDING

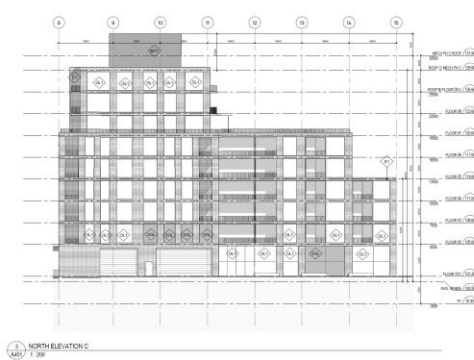
**SvN**

**466-490 HIGHWAY 8**  
466-490 HIGHWAY 8  
STONE CREEK ON  
RESPONSIVE GROUP

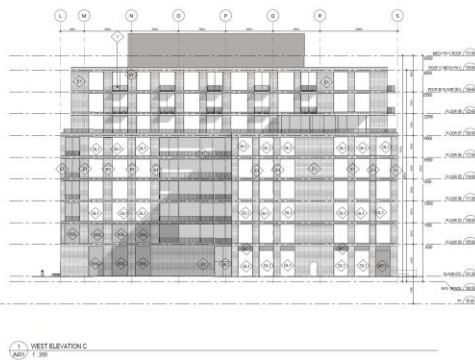
**BUILDING B ELEVATIONS**

|                   |          |                     |          |
|-------------------|----------|---------------------|----------|
| PROJECT           | DATE     | STATUS              | SCALE    |
| 466-490 HIGHWAY 8 | 18 11 21 | ISSUED FOR REZONING | AS SHOWN |
| DATE              | 18 11 21 | STATUS              | SCALE    |

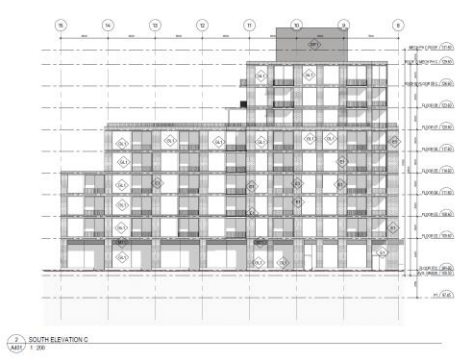
**A400**



1 NORTH ELEVATION C  
ASB T. 206



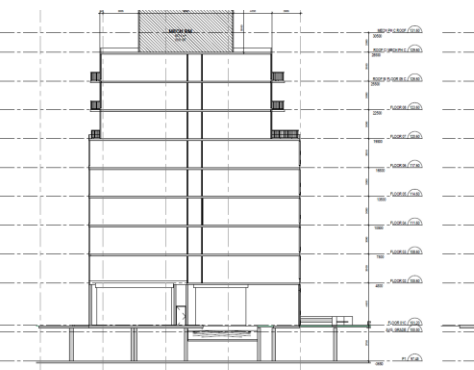
1 WEST ELEVATION C  
ASB T. 206



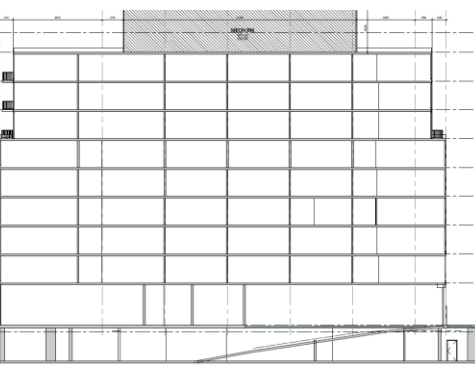
2 SOUTH ELEVATION C  
ASB T. 206



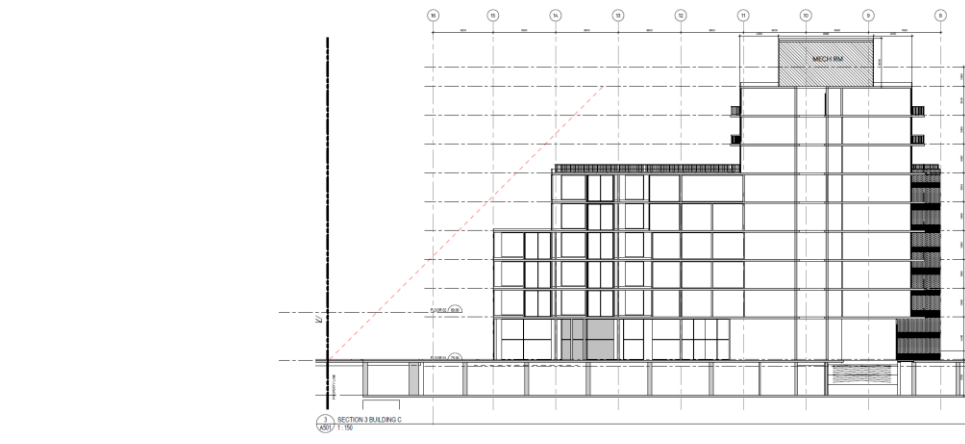
1 EAST ELEVATION C  
ASB T. 206



SECTION 2 BUILDING C  
ASB T. 176



SECTION 1 BUILDING C  
ASB T. 176



SECTION 3 BUILDING C  
ASB T. 176

| NO. | DATE  | REVISION / COMMENT     |
|-----|-------|------------------------|
| 1   | 08/21 | Issued for Reviewing   |
| 2   | 08/24 | Revised                |
| 3   | 09/28 | Released for Reviewing |

NOTES

LEGEND CLADDING

- 01 - BRICKWYF
- 02 - CLADDING
- 03 - GLASS CURTAIN WALL
- 04 - SPECIAL GLASS
- 05 - METAL CLADDING

**SvN**  
Sustainable Value Network

456-490 HIGHWAY 8  
456-08-0001-17  
STONEY CREEK, ON  
RESPONSIVE GROUP

BUILDING C ELEVATIONS

PROJECT NO. 456-08-0001-17  
DATE 08/21/2024  
SCALE 1/8" = 1'-0"

**A401**

| NO. | DATE  | REVISION / COMMENT     |
|-----|-------|------------------------|
| 1   | 08/21 | Issued for Reviewing   |
| 2   | 08/24 | Revised                |
| 3   | 09/28 | Released for Reviewing |

NOTES

**SvN**  
Sustainable Value Network

456-490 HIGHWAY 8  
456-08-0001-17  
STONEY CREEK, ON  
RESPONSIVE GROUP

BUILDING C SECTIONS

PROJECT NO. 456-08-0001-17  
DATE 08/21/2024  
SCALE 1/8" = 1'-0"

**A501**